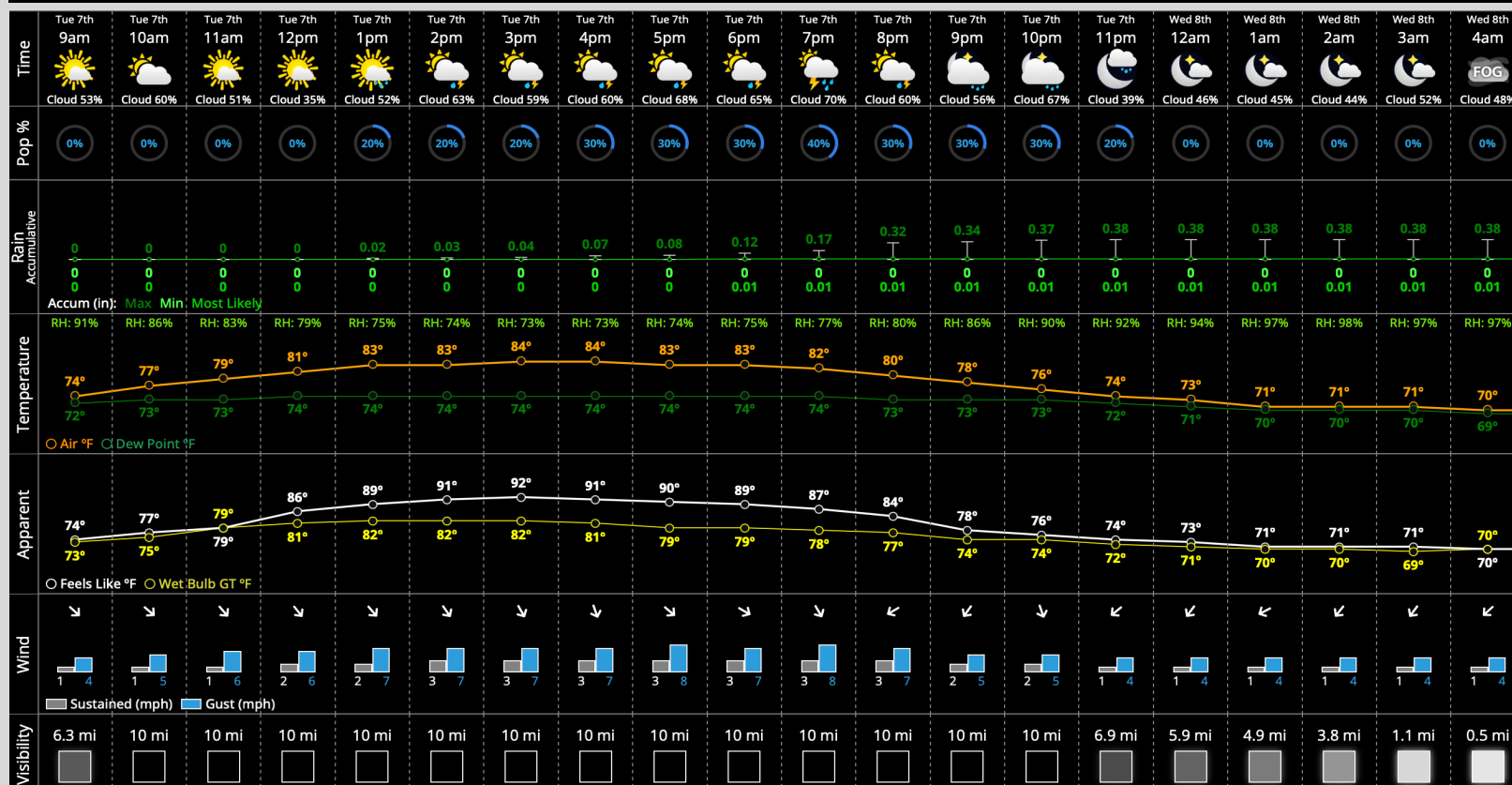


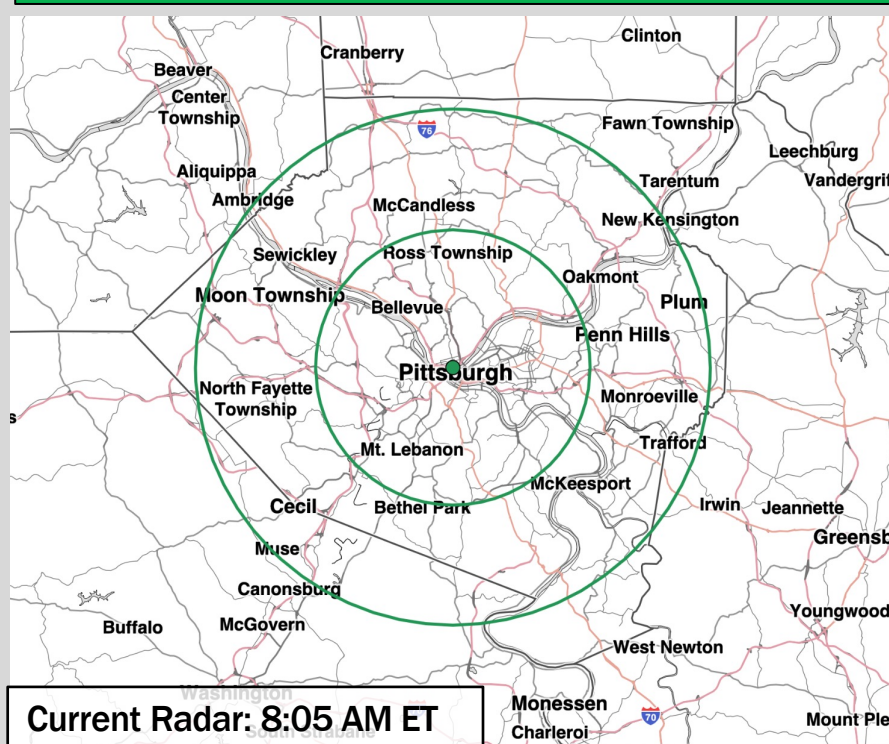


HOUR BY HOUR FORECAST:



Hazardous Weather Alerts:

No Current Alerts



IMPORTANT FORECAST NOTES

- ✓ Instances of patchy mist should fizzle out by ~9AM with otherwise dry conditions this morning.
- ✓ Isolated pop-up showers/downpours can start as early as 1PM (~20% coverage).
- ✓ Higher risk for a few pop-up storms will come after 3PM through 11PM. While the majority of this timeframe will be dry, any pop up can contain briefly heavy rain, lightning and produce a quick 0.25"+ of rain.
- ✓ Instances of patchy mist/fog possible overnight Tue into Wed. AM.

Dew Forecast

Dew is probable Wed. AM with isolated instances of fog/mist.