

# PITTSBURGH PIRATES

Wednesday, June 10, 2026

8:45 AM ET Weather Forecast

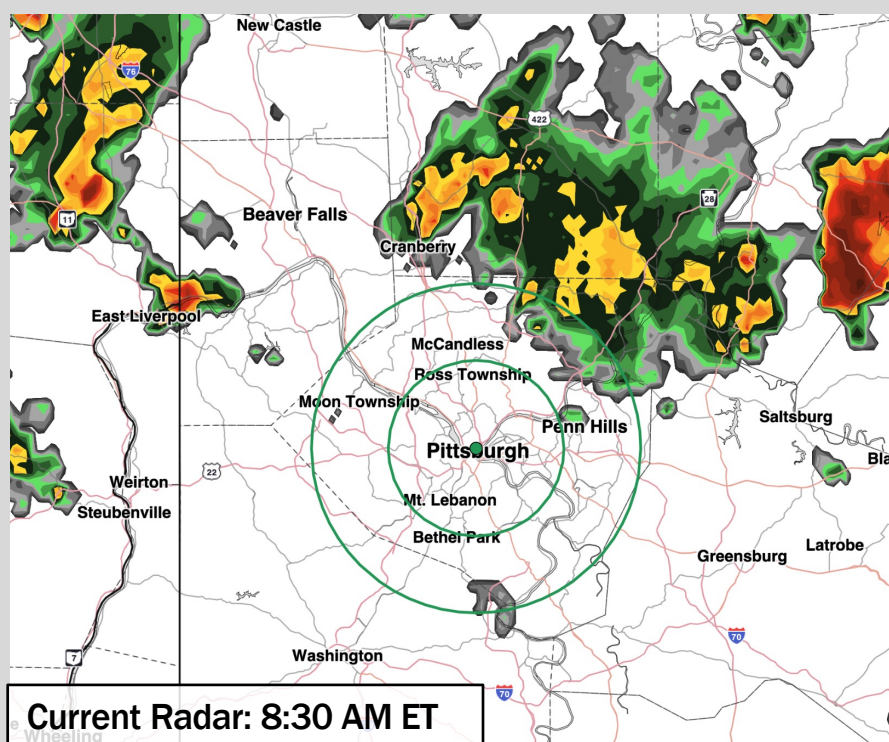


## HOUR BY HOUR FORECAST:

Time	Wed 10th 9am	Wed 10th 10am	Wed 10th 11am	Wed 10th 12pm	Wed 10th 1pm	Wed 10th 2pm	Wed 10th 3pm	Wed 10th 4pm	Wed 10th 5pm	Wed 10th 6pm	Wed 10th 7pm	Wed 10th 8pm	Wed 10th 9pm	Wed 10th 10pm	Wed 10th 11pm	Thu 11th 12am	Thu 11th 1am	Thu 11th 2am
Cloud %	86%	88%	82%	82%	80%	67%	53%	39%	43%	32%	38%	37%	31%	27%	50%	55%	61%	61%
Pop %	50%	50%	60%	30%	30%	30%	20%	20%	0%	20%	20%	30%	30%	40%	70%	70%	70%	40%
Rain Accumulative	0.09	0.15	0.27	0.28	0.29	0.31	0.32	0.33	0.33	0.34	0.35	0.4	0.45	0.46	0.67	0.96	1.14	1.22
Accum (in):	0.02	0.02	0.03	0.03	0.03	0.03	0.03	0.03	0.03	0.03	0.03	0.03	0.03	0.03	0.03	0.04	0.05	0.05
RH:	90%	87%	87%	84%	80%	76%	72%	69%	67%	67%	66%	67%	74%	78%	80%	83%	85%	87%
Temperature	73°	75°	77°	79°	81°	82°	84°	85°	86°	86°	84°	82°	80°	78°	77°	76°	75°	75°
Apparent	73°	75°	77°	79°	86°	89°	91°	93°	93°	93°	93°	91°	87°	80°	78°	77°	76°	75°
Wind	7 17	7 17	8 18	8 18	8 19	9 19	9 19	9 19	8 19	8 18	7 17	6 16	6 16	6 16	6 16	5 16	5 16	6 16

## Hazardous Weather Alerts:

None Forecasted



## IMPORTANT FORECAST NOTES

- ✓ On and off rain and an isolated storm likely through 11AM – 12PM this morning. A scattered 0.1 – 0.25" of rain (locally 0.5"+) possible in this timeframe.
- ✓ A very low-end shower risk exists through 3PM but favoring the 12PM to 6PM window to stay predominantly dry.
- ✓ Scattered (20 – 30%) pop up storm risks re-develop for the 6 – 10 PM timeframe, with more widespread storms arriving by 11PM through 2AM. Storms after 6PM pose the risk for lightning, 40+ MPH wind gusts, 1" hail and periods of heavy rain (through 2AM expect an additional 0.2 – 0.5" of rain with localized totals to 1").

## Dew Forecast

Grounds will be wet Thu AM from overnight rain.