

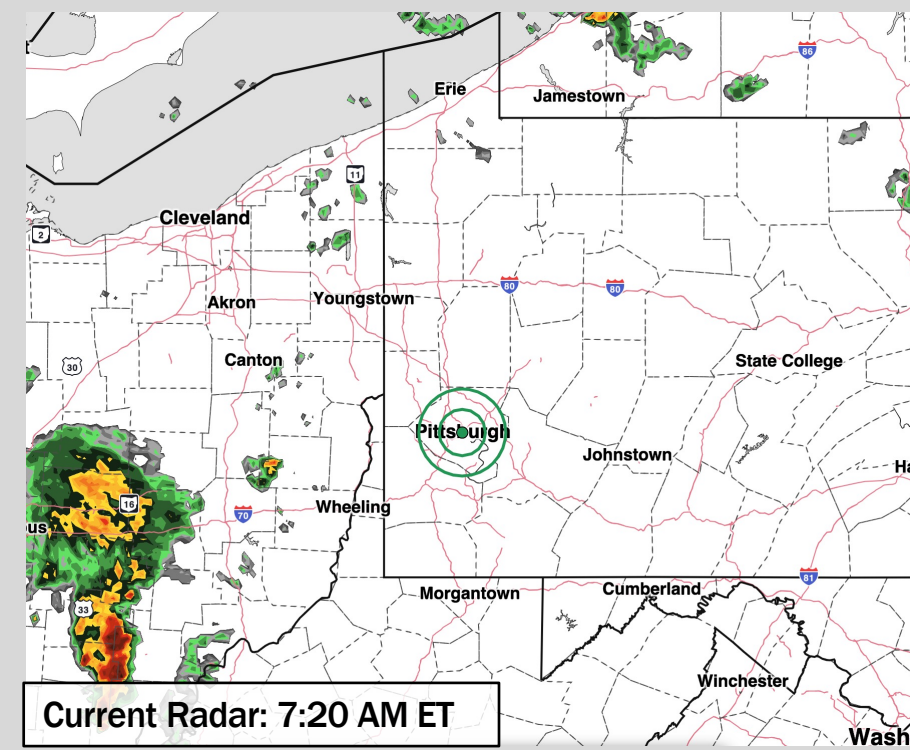


HOUR BY HOUR FORECAST:

Time	Sun 14th 8am	Sun 14th 9am	Sun 14th 10am	Sun 14th 11am	Sun 14th 12pm	Sun 14th 1pm	Sun 14th 2pm	Sun 14th 3pm	Sun 14th 4pm	Sun 14th 5pm	Sun 14th 6pm	Sun 14th 7pm	Sun 14th 8pm	Sun 14th 9pm	Sun 14th 10pm	Sun 14th 11pm	Mon 15th 12am	Mon 15th 1am	Mon 15th 2am	Mon 15th 3am
Cloud %	53%	70%	80%	80%	86%	83%	91%	82%	72%	87%	67%	75%	90%	83%	77%	60%	55%	56%	78%	77%
Pop %	10%	10%	10%	10%	10%	50%	40%	10%	60%	80%	90%	80%	90%	50%	40%	10%	0%	0%	0%	0%
Rain Accumulative	0.01	0.02	0.03	0.04	0.06	0.1	0.14	0.16	0.19	0.36	0.53	0.71	0.88	0.91	0.93	0.94	0.94	0.94	0.94	0.94
Accum (in):	0	0	0	0	0.01	0.01	0.01	0.01	0.01	0.03	0.14	0.23	0.29	0.3	0.31	0.31	0.31	0.31	0.31	0.31
RH: 70%	67%	63%	60%	58%	57%	58%	62%	66%	72%	77%	80%	81%	85%	87%	87%	89%	90%	91%	91%	93%
Temp (Air °F)	70°	73°	76°	78°	80°	82°	83°	82°	80°	79°	76°	74°	71°	68°	66°	65°	63°	61°	60°	60°
Dew Point (°F)	60°	61°	62°	63°	64°	66°	66°	68°	68°	69°	68°	67°	64°	63°	62°	61°	60°	59°	58°	57°
Apparent (Feels Like °F)	70°	73°	76°	78°	82°	84°	85°	85°	83°	79°	76°	74°	71°	68°	66°	65°	63°	61°	60°	60°
Wet Bulb GT (°F)	66°	69°	71°	73°	74°	76°	77°	77°	76°	74°	73°	70°	67°	66°	64°	62°	61°	60°	59°	58°
Wind	↑ 4-12	↑ 5-14	↑ 6-16	↑ 7-17	↑ 9-20	↑ 10-23	↑ 11-25	↑ 12-26	↑ 12-26	↑ 11-25	→ 11-24	→ 11-23	↓ 9-22	↓ 8-19	↓ 7-17	↓ 6-15	↓ 5-14	↓ 5-13	↓ 5-14	↓ 5-14
Visibility	10 mi	10 mi	10 mi	10 mi	10 mi	10 mi	10 mi	10 mi	10 mi	6.9 mi	3 mi	3.9 mi	2.5 mi	2.9 mi	4.9 mi	5.9 mi	5.9 mi	7.9 mi	9 mi	9 mi

Hazardous Weather Alerts:

No Current Alerts



Current Radar: 7:20 AM ET

IMPORTANT FORECAST NOTES

- ✓ Expecting light showers from 10-11AM. From 11AM - 2PM mostly dry time is favored. Rainfall amounts of .05”-.1” likely with showers from 10-11AM.
- ✓ At 2PM, hit/miss pop up showers are likely, with lightning likely. Dry gaps of 45-60 minutes are expected. Rainfall amounts of .1”-.2” possible with any pop up.
- ✓ From 5PM - 8PM, scattered to widespread storms are likely as a front moves through the area. Little to no dry windows expected. Wind gusts of 40+ MPH, large hail, and lightning are likely along with .25”-.5” of rainfall.
- ✓ Isolated lingering light showers possible from 8PM - 12AM.

Dew Forecast

Dew is likely MON AM.