

Houston Pilots Forecast Package

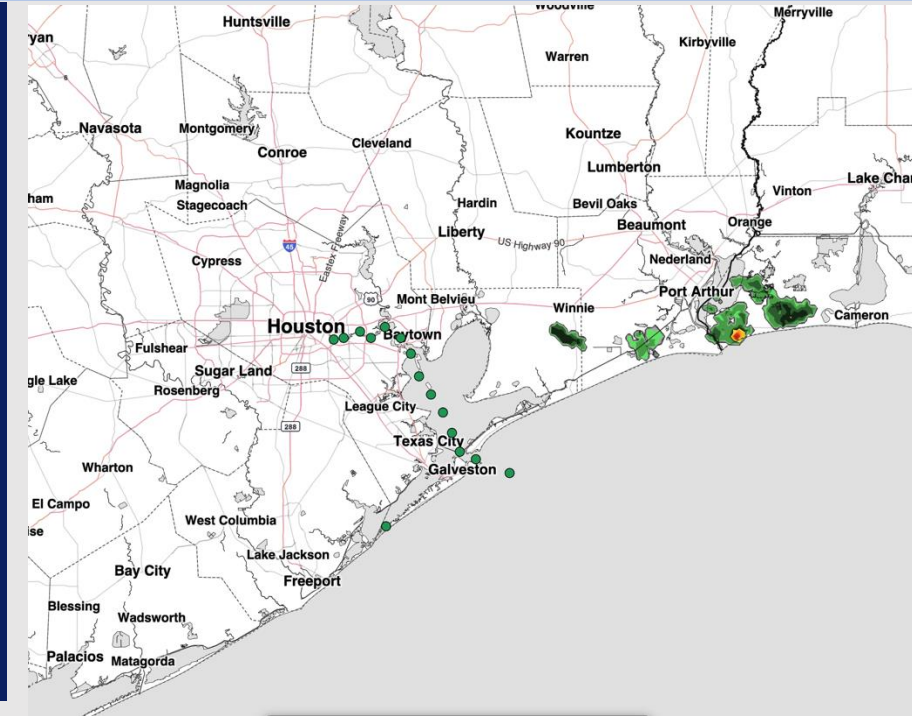


Updated: 10:48 PM CT
Sunday, May 10, 2026

Forecaster: Daniel Murphy

Weather Headlines

- **Strong to Severe Storms expected Today capable of producing wind gusts up to 45kts.**
- **Strong to Severe Storms expected Early Monday AM capable of producing wind gusts up to 55kts.**
- **Dry conditions favored Tuesday**



Current Radar: 10:43 PM CT

As always, please do not hesitate to reach out to us with any forecast questions at [\(317\)-560-8122](tel:317-560-8122). Press 1 for forecast questions.

You can also access real-time forecast updates and 24/7 meteorological chat assistance on your [Clarity](#) app.



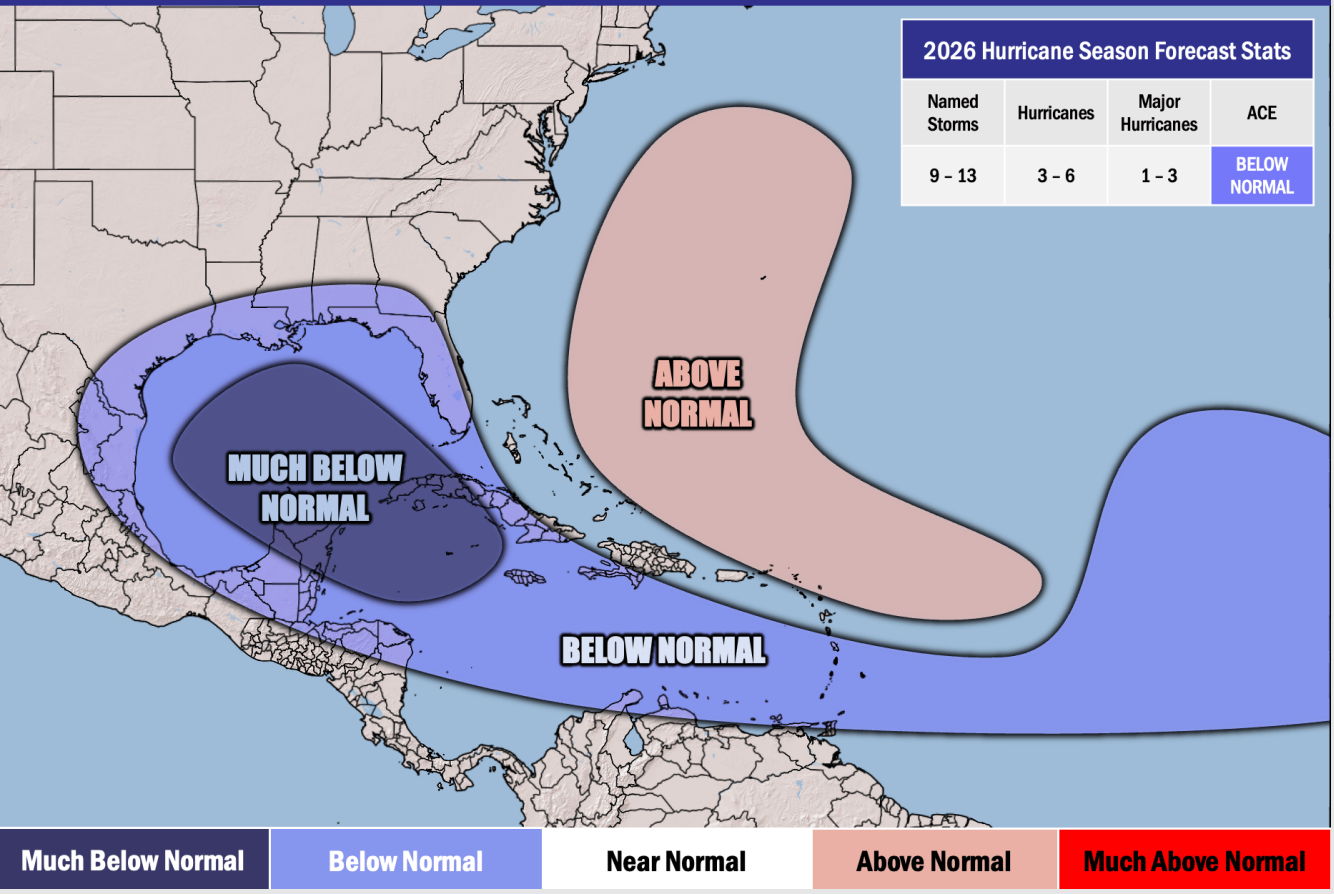
Seasonal Hurricane Outlook

2026 Hurricane Season Outlook



Updated: 4/9/26

Forecaster: Walts



Graphic to the left represents our favored seasonal outlook for the 2026 Hurricane Season. Conditions expected to be less favorable for tropical development within the Gulf this season.

No notable tropical development is expected over the next 7 days.

Much Below Normal Below Normal Near Normal Above Normal Much Above Normal

Houston Pilots Visibility Chart (miles)



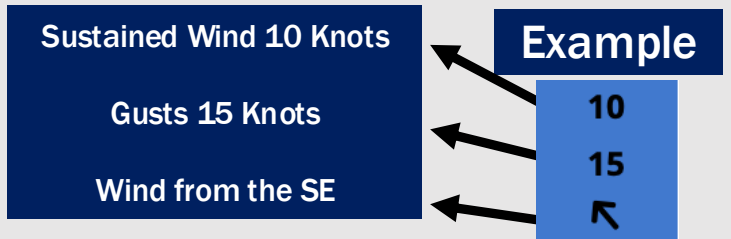
Forecast Confidence



Visibility	Sun 12 am	Sun 1 am	Sun 2 am	Sun 3 am	Sun 4 am	Sun 5 am	Sun 6 am	Sun 7 am	Sun 8 am	Sun 9 am	Sun 10 am	Sun 11 am	Sun 12 pm	Sun 1 pm	Sun 2 pm	Sun 3 pm	Sun 4 pm	Sun 5 pm	Sun 6 pm	Sun 7 pm	Sun 8 pm	Sun 9 pm	Sun 10 pm	Sun 11 pm
Houston Pilots N - 610 Bridge	10	10	10	10	9	6.9	6.9	6.9	4.9	6.9	10	10	10	10	10	10	10	10	10	10	10	10	10	10
Houston Pilots M - Kinder 1	10	10	10	10	9	6.9	6.9	6.9	4.9	6.9	10	10	10	10	10	10	10	10	10	10	10	10	10	10
Houston Pilots L - Greens Bayou	10	10	10	10	9	6.9	6.9	6.9	4.9	6.9	10	10	10	10	10	10	10	10	10	10	10	10	10	10
Houston Pilots K - Shell Crude	10	10	10	10	9	6.9	6.9	6.9	4.9	6.9	10	10	10	10	10	10	10	10	10	10	10	10	10	10
Houston Pilots J - Lynchburg Ferries	10	10	10	10	9	6.9	6.9	6.9	4.9	6.9	10	10	10	10	10	10	10	10	10	10	10	10	10	10
Houston Pilots I - Exxon 3	10	10	10	10	9	6.9	6.9	6.9	4.9	6.9	10	10	10	10	10	10	10	10	10	10	10	10	10	10
Houston Pilots H - Morgans Point	10	10	10	10	9	6.9	6.9	6.9	4.9	6.9	10	10	10	10	10	10	10	10	10	10	10	10	10	10
Houston Pilots G - 75/76	6.9	6.9	6.9	5.9	5.9	4.9	4.9	4.9	2.9	3.9	6.9	10	10	10	10	10	10	10	10	10	10	10	9	7.9
Houston Pilots F - 63/64	6.9	6.9	6.9	4.9	4.9	4.9	4.9	4.9	2.9	3.9	6.9	10	10	10	10	10	10	10	10	10	10	10	6.9	6.9
Houston Pilots E - 51/52	4.9	4.9	4.9	4.9	4.9	4.9	3.9	4.9	2.9	2.9	5.9	10	10	10	10	10	9	7.9	9	6.9	10	10	6.9	6.9
Houston Pilots D - 37/38	4.9	4.9	4.9	4.9	4.9	4.9	3.9	4.9	2.9	2.9	5.9	10	10	10	10	10	6.9	6.9	7.9	6.9	10	10	6.9	6.9
Houston Pilots C - 25/26	4.9	4.9	4.9	4.9	4.9	4.9	4.9	4.9	2.9	2.9	4.9	10	10	10	10	10	6.9	6.9	6.9	6.9	10	10	6.9	6.9
Houston Pilots B - 11/12	3.9	4.9	4.9	4.9	3.9	4.9	3.9	4.9	2.9	2.9	3.9	10	10	10	9	9	6.9	6.9	6.9	6.9	10	9	6.9	4.9
Houston Pilots A - 1 & 2 Bravo	3.9	3.9	3.9	3.9	3.9	4.9	3.9	3.9	2.9	2.5	3.9	4.9	6.9	6.9	6.9	6.9	4.9	3.9	3.9	4.9	3.9	3.9	4.9	4.9

NOTE: This is automated data that may/may not agree with the official BAM thinking that's found on the daily slides or special visibility report slides. This data should be used as a guide only

Houston Pilots Wind Chart



Wind	Sun 12 am	Sun 1 am	Sun 2 am	Sun 3 am	Sun 4 am	Sun 5 am	Sun 6 am	Sun 7 am	Sun 8 am	Sun 9 am	Sun 10 am	Sun 11 am	Sun 12 pm	Sun 1 pm	Sun 2 pm	Sun 3 pm	Sun 4 pm	Sun 5 pm	Sun 6 pm	Sun 7 pm	Sun 8 pm	Sun 9 pm	Sun 10 pm	Sun 11 pm	
Houston Pilots N - 610 Bridge	5 9 ↖	3 9 ↖	3 8 ↖	3 7 ↖	2 7 ↖	2 7 ↖	2 7 ↖	2 7 ↖	2 7 ↖	3 7 ↖	3 8 ↖	5 8 ↖	6 9 ↖	6 12 ↖	7 13 ↖	7 14 ↖	8 15 ↖	9 16 ↖	9 16 ↖	10 17 ↖	9 17 ↖	8 14 ↖	6 12 ↖	5 10 ↖	
Houston Pilots M - Kinder 1	5 10 ↖	5 9 ↖	3 8 ↖	3 7 ↖	2 7 ↖	2 7 ↖	2 7 ↖	2 7 ↖	2 7 ↖	3 8 ↖	3 8 ↖	5 9 ↖	6 10 ↖	6 13 ↖	7 13 ↖	7 15 ↖	8 16 ↖	9 16 ↖	9 17 ↖	10 17 ↖	9 17 ↖	8 14 ↖	6 12 ↖	5 10 ↖	
Houston Pilots L - Greens Bayou	5 9 ↖	5 8 ↖	3 8 ↖	3 7 ↖	2 7 ↖	2 7 ↖	2 6 ↖	2 6 ↖	2 7 ↖	3 8 ↖	3 8 ↖	5 8 ↖	6 10 ↖	7 12 ↖	7 13 ↖	7 14 ↖	8 15 ↖	9 16 ↖	9 16 ↖	9 17 ↖	9 17 ↖	8 14 ↖	6 12 ↖	5 9 ↖	
Houston Pilots K - Shell Crude	5 9 ↖	5 8 ↖	3 8 ↖	3 7 ↖	3 7 ↖	2 7 ↖	2 6 ↖	2 6 ↖	2 7 ↖	3 8 ↖	3 8 ↖	5 9 ↖	6 10 ↖	7 12 ↖	7 13 ↖	8 14 ↖	8 16 ↖	9 16 ↖	9 17 ↖	10 17 ↖	9 17 ↖	8 14 ↖	7 12 ↖	5 9 ↖	
Houston Pilots J - Lynchburg Ferries	5 9 ↖	3 8 ↖	3 8 ↖	3 7 ↖	2 6 ↖	2 6 ↖	2 6 ↖	2 6 ↖	2 6 ↖	3 7 ↖	3 8 ↖	5 9 ↖	6 10 ↖	7 12 ↖	7 13 ↖	7 13 ↖	8 14 ↖	9 15 ↖	9 16 ↖	9 17 ↖	10 17 ↖	9 17 ↖	7 14 ↖	6 12 ↖	5 9 ↖
Houston Pilots I - Exxon 3	8 12 ↖	7 10 ↖	7 10 ↖	6 9 ↖	6 8 ↖	6 8 ↖	5 8 ↖	5 8 ↖	5 8 ↖	6 9 ↖	6 9 ↖	7 10 ↖	7 12 ↖	8 13 ↖	8 14 ↖	9 15 ↖	9 16 ↖	10 17 ↖	12 18 ↖	12 18 ↖	13 18 ↖	13 18 ↖	10 16 ↖	9 13 ↖	7 12 ↖
Houston Pilots H - Morgans Point	8 12 ↖	7 10 ↖	7 10 ↖	6 9 ↖	6 9 ↖	6 8 ↖	5 8 ↖	5 8 ↖	6 8 ↖	6 9 ↖	6 9 ↖	7 10 ↖	7 12 ↖	8 13 ↖	8 14 ↖	9 15 ↖	10 16 ↖	12 17 ↖	12 18 ↖	13 20 ↖	13 18 ↖	10 16 ↖	9 14 ↖	7 12 ↖	
Houston Pilots G - 75/76	9 14 ↖	8 13 ↖	8 13 ↖	8 12 ↖	7 10 ↖	7 10 ↖	7 10 ↖	7 10 ↖	6 10 ↖	7 10 ↖	7 10 ↖	7 10 ↖	7 13 ↖	8 13 ↖	8 15 ↖	9 16 ↖	9 17 ↖	10 20 ↖	12 20 ↖	13 21 ↖	14 20 ↖	14 17 ↖	13 15 ↖	10 14 ↖	
Houston Pilots F - 63/64	9 13 ↖	8 13 ↖	8 13 ↖	7 12 ↖	7 10 ↖	7 10 ↖	7 10 ↖	7 10 ↖	6 9 ↖	7 10 ↖	7 10 ↖	7 10 ↖	7 12 ↖	8 13 ↖	8 14 ↖	9 16 ↖	9 17 ↖	10 18 ↖	12 20 ↖	13 20 ↖	13 20 ↖	14 20 ↖	12 17 ↖	10 15 ↖	9 14 ↖
Houston Pilots E - 51/52	9 14 ↖	8 13 ↖	8 12 ↖	8 12 ↖	7 10 ↖	7 12 ↖	7 12 ↖	7 10 ↖	7 10 ↖	7 10 ↖	7 10 ↖	7 10 ↖	7 12 ↖	8 13 ↖	8 14 ↖	9 16 ↖	9 17 ↖	10 18 ↖	12 18 ↖	13 18 ↖	13 18 ↖	13 18 ↖	12 16 ↖	10 15 ↖	9 14 ↖
Houston Pilots D - 37/38	9 14 ↖	8 13 ↖	8 13 ↖	8 12 ↖	7 12 ↖	7 12 ↖	7 12 ↖	7 10 ↖	6 10 ↖	7 10 ↖	7 10 ↖	7 10 ↖	7 12 ↖	8 13 ↖	8 14 ↖	9 15 ↖	9 17 ↖	10 17 ↖	12 18 ↖	12 18 ↖	13 18 ↖	13 17 ↖	12 16 ↖	10 15 ↖	9 15 ↖
Houston Pilots C - 25/26	8 13 ↖	8 13 ↖	8 12 ↖	8 12 ↖	7 10 ↖	7 12 ↖	7 10 ↖	7 10 ↖	6 9 ↖	6 10 ↖	6 10 ↖	6 10 ↖	7 12 ↖	8 13 ↖	8 14 ↖	9 15 ↖	9 16 ↖	10 17 ↖	10 17 ↖	12 17 ↖	12 17 ↖	12 17 ↖	10 16 ↖	9 15 ↖	9 14 ↖
Houston Pilots B - 11/12	8 13 ↖	7 13 ↖	7 12 ↖	7 12 ↖	6 10 ↖	7 10 ↖	6 10 ↖	6 10 ↖	6 9 ↖	6 9 ↖	6 9 ↖	6 9 ↖	7 10 ↖	7 12 ↖	8 13 ↖	8 14 ↖	9 15 ↖	10 16 ↖	10 16 ↖	10 16 ↖	12 16 ↖	12 16 ↖	10 15 ↖	9 15 ↖	8 14 ↖
Houston Pilots A - 1 & 2 Bravo	9 14 ↖	9 14 ↖	9 13 ↖	8 13 ↖	8 12 ↖	8 13 ↖	8 13 ↖	8 12 ↖	7 10 ↖	6 10 ↖	6 10 ↖	6 10 ↖	6 10 ↖	7 12 ↖	7 13 ↖	8 13 ↖	9 14 ↖	10 15 ↖	10 16 ↖	12 17 ↖	12 17 ↖	12 17 ↖	12 17 ↖	10 15 ↖	10 15 ↖

NOTE: This is automated data that may/may not agree with the official BAM thinking that's found on the daily slides. This data should be used as a guide only.

Houston Pilots: SUN. 5/10/2026



Forecast Discussion

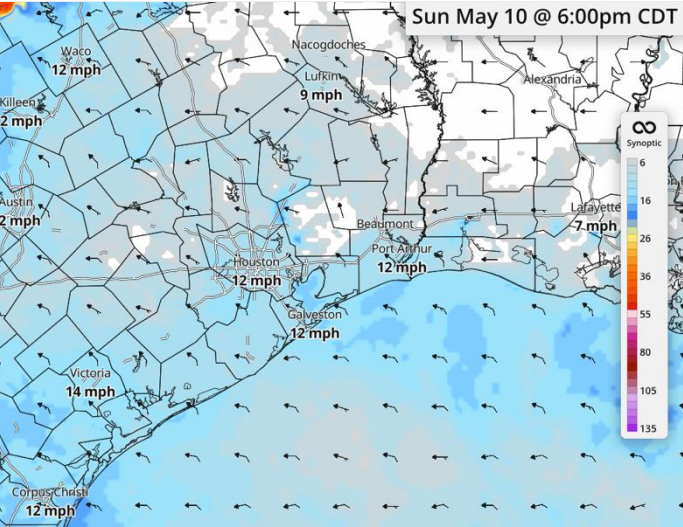
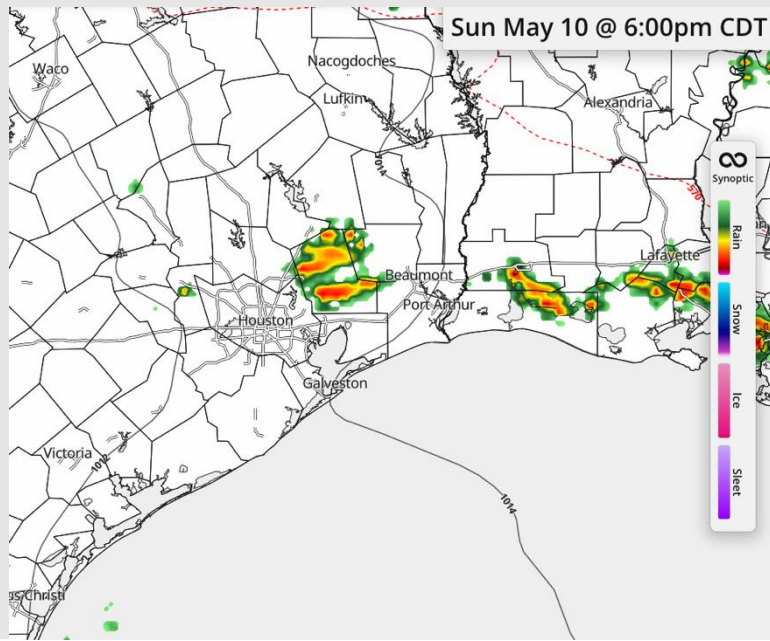
Precip: Scattered storms expected after 4pm. Potential for storms to be **Strong/Severe with potential for wind gusts up to 45kts and lightning.**

Wind: Winds out of the SE, becoming more variable at 7AM. Winds out of the E after 12PM. **N of Morgan's Point:** Winds of 4 – 9 kts. **S of Morgan's Point:** Winds of 9 – 14 kts.

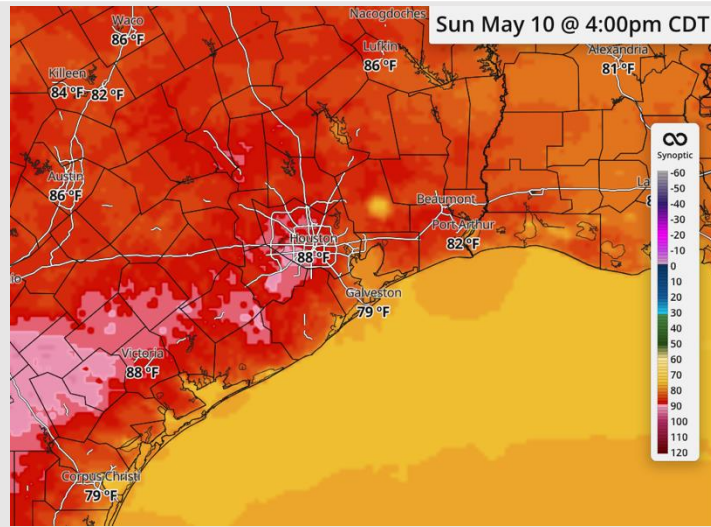
High Temps: **N of Morgan's Point:** High 80s F. **S of Morgan's Point:** High 70s F.

Visibility: No visibility concerns today.

Precip Image: 6 PM CT



**Wind Speed:
6 PM CT**



**High Temps
Today**

Houston Pilots: MON. 5/11/2026



Forecast Discussion

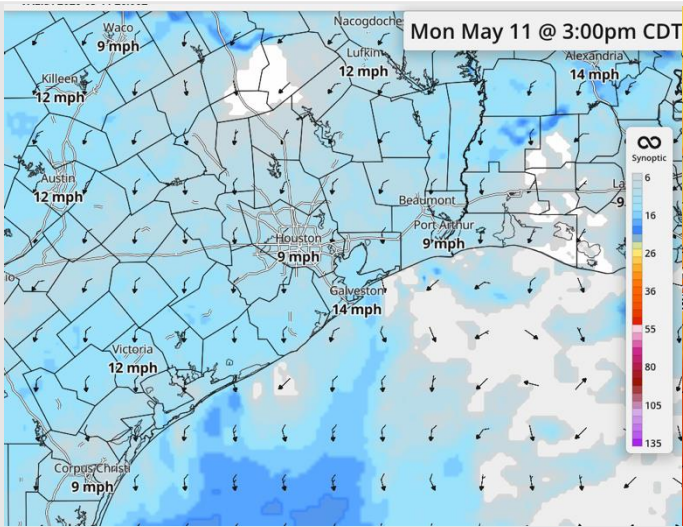
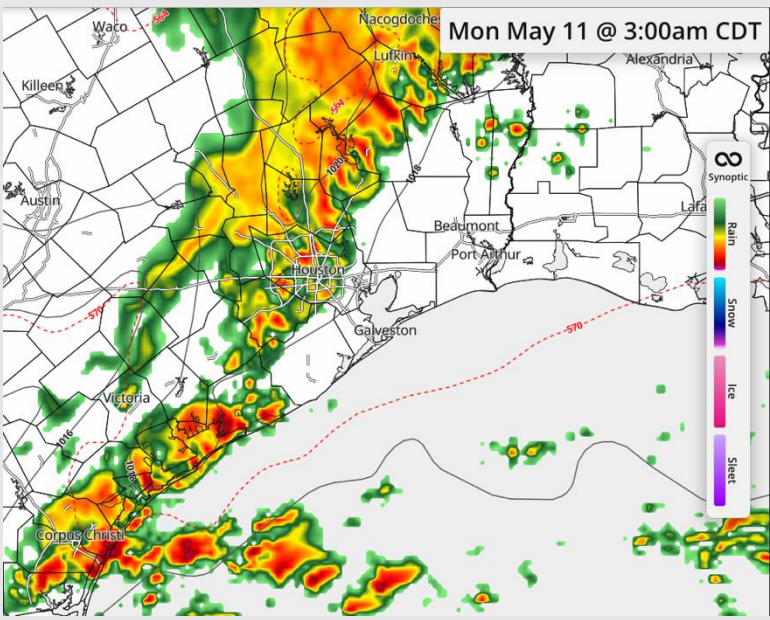
Precip: Scattered storms from 12am to 2am. Widespread storms from 2am to 6am. Storms are capable of **wind gusts up to 55kts, large hail, lightning, and an isolated tornado.** Isolated showers from 7pm to 10pm

Wind: Winds out of the NNE through 12pm, then blowing out of the N after. **N of Morgan's Point:** Winds of 5 – 10 kts. **S of Morgan's Point:** Winds of 9 – 14 kts. **Non-Thunderstorm wind gusts up to 35mph possible from 6-9pm.**

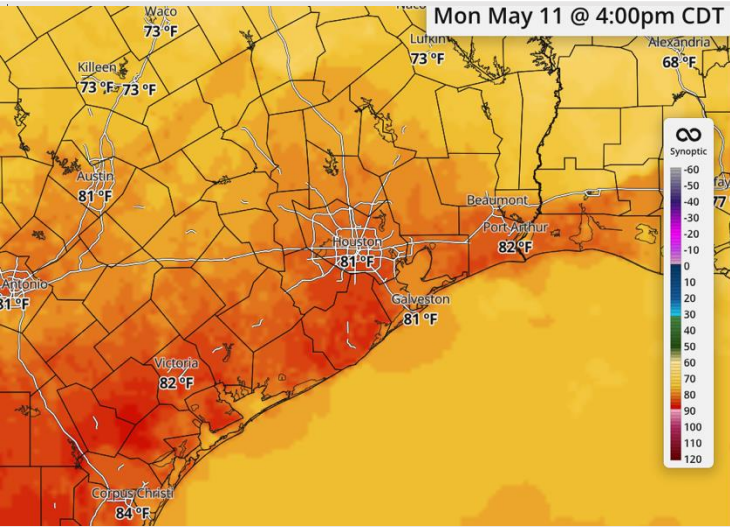
High Temps: **N of Morgan's Point:** Low 80s F. **S of Morgan's Point:** Low 80s F.

Visibility: Visibility may be reduced under downpours.

Precip Image: 3 AM CT



**Wind Speed:
3 PM CT**



**High Temps
Monday**

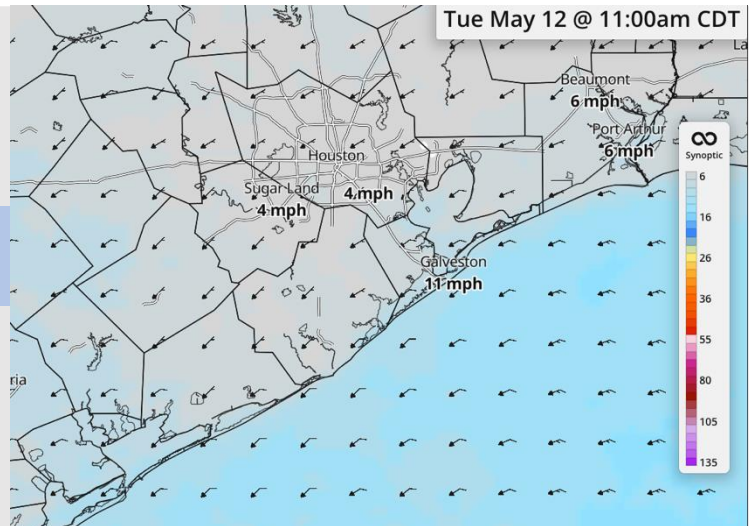
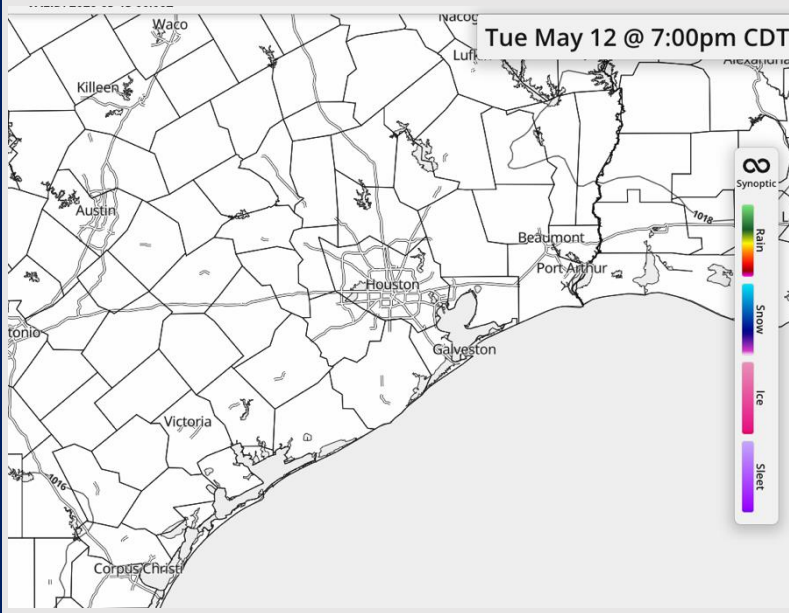
Houston Pilots: TUE. 5/12/2026



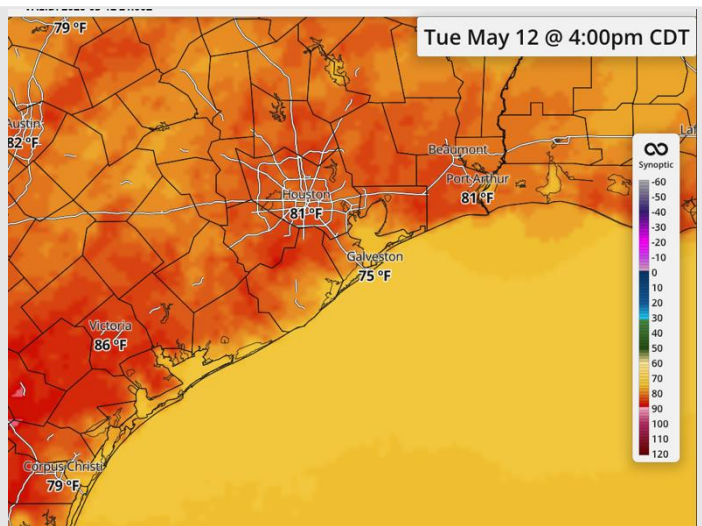
Forecast Discussion

- Precip:** Dry conditions favored Tuesday.
- Wind:** Winds out of the NE becoming more variable after 12pm. **N of Morgan's Point:** Winds of 3 – 8 kts. **S of Morgan's Point:** Winds of 8 – 13 kts.
- High Temps:** **N of Morgan's Point:** Low 80s F. **S of Morgan's Point:** Mid 70s F.
- Visibility:** No visibility concerns for Tuesday.

Precip Image: 7 PM CT



Wind Speed:
11 AM CT

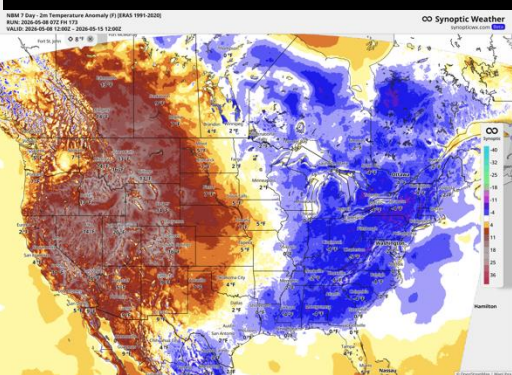


High Temps
Tuesday

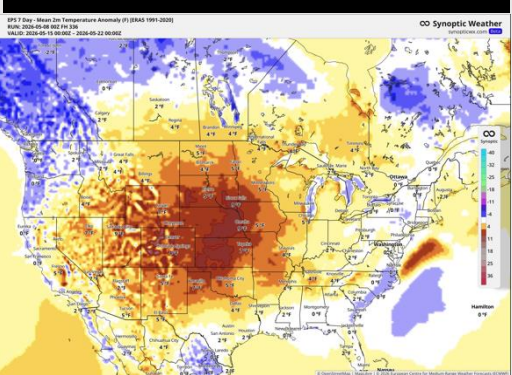
Houston Pilots: 5/10/2026



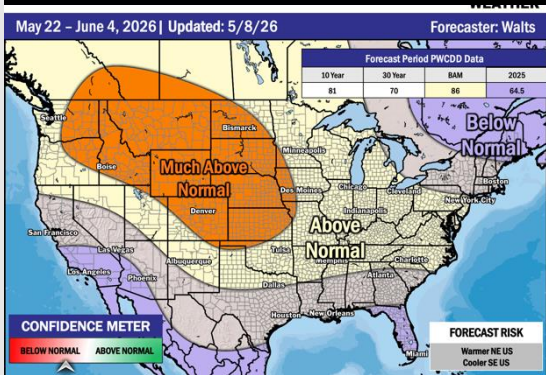
Next 7 Day Temperature Departure



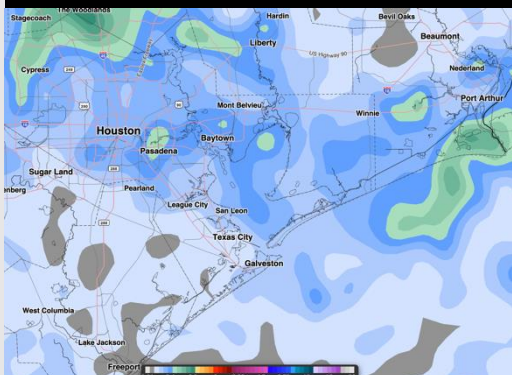
8-14 Day Temperature Departure



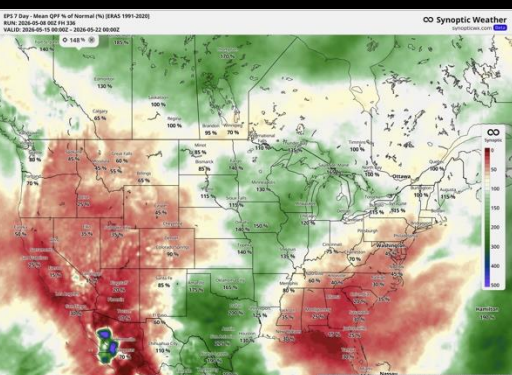
15-30 Day Temperature Departure



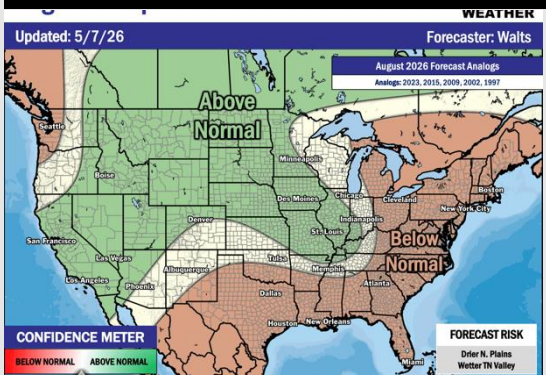
Next 7 Day Total Precipitation



8-14 Day % of Average Precip.



15-30 Day % of Average Precip.



- Below normal temps are favored over the next 7 days with daily rain chances most days through early next week.
- Near normal temperatures and above normal rain chances in the Week 2 period.
- Near normal temperatures and below normal rainfall expected through the end of June.