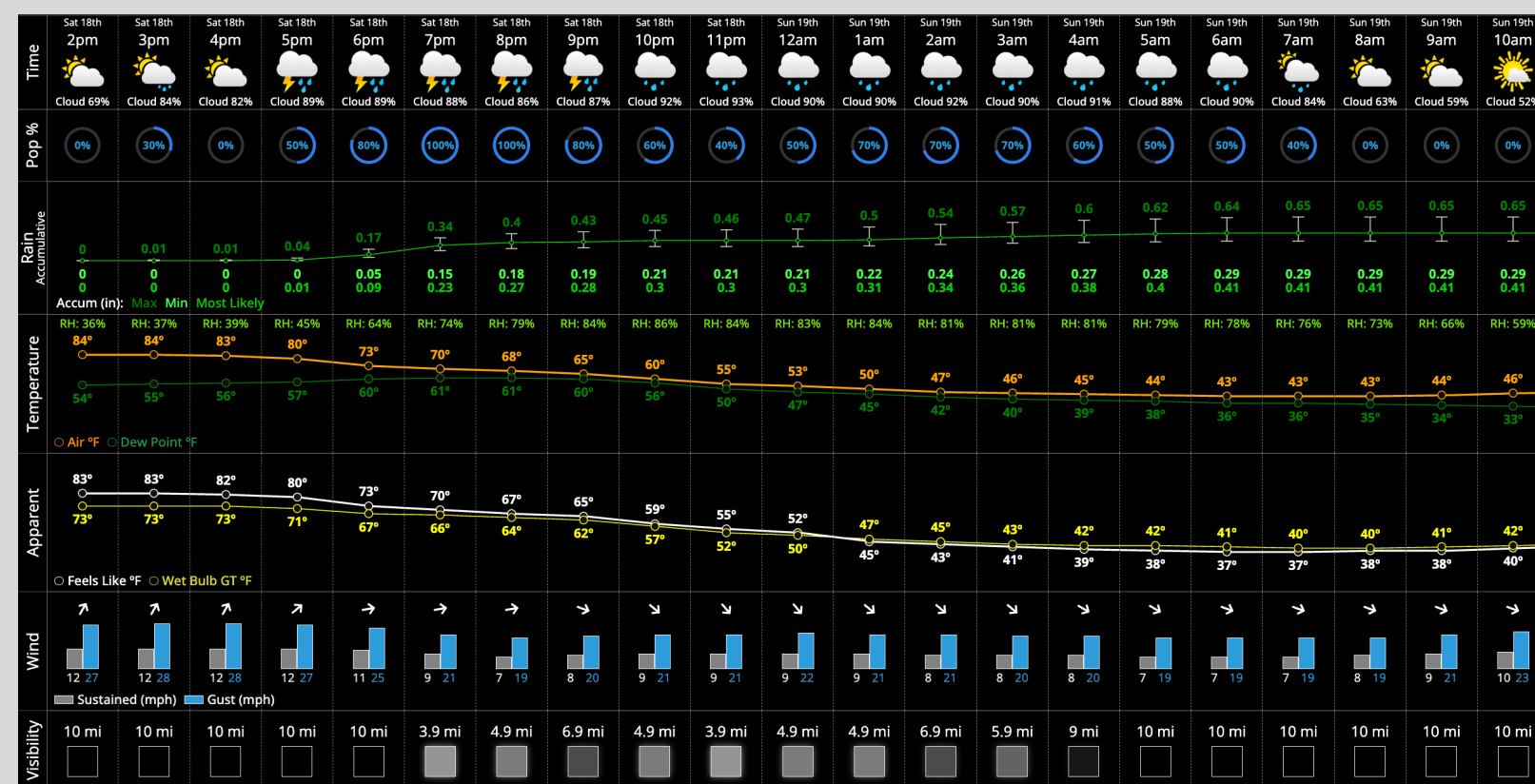


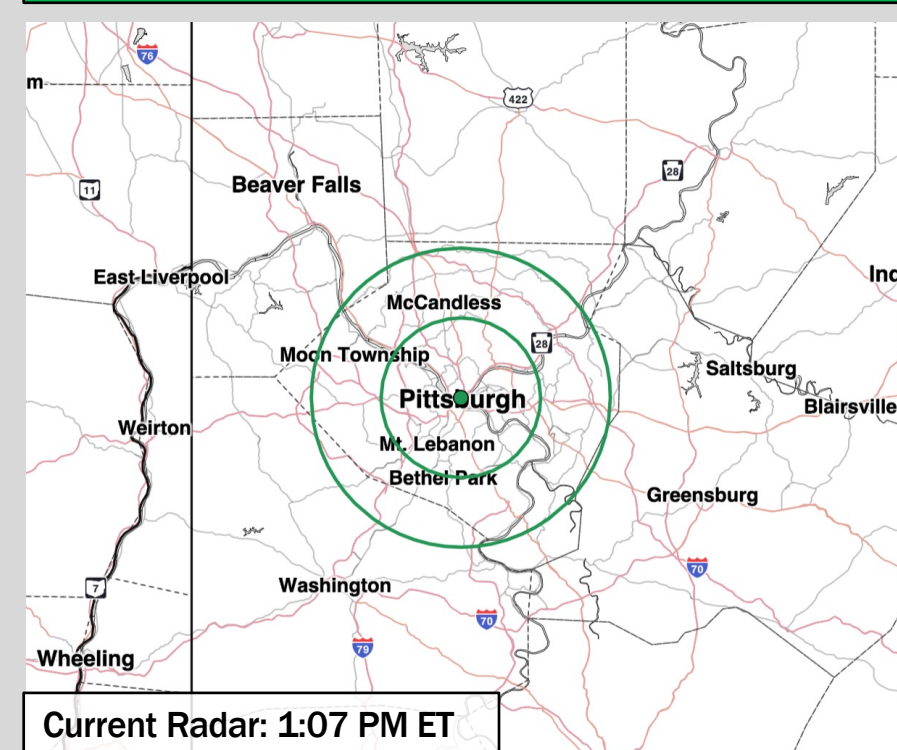


HOUR BY HOUR FORECAST:



Hazardous Weather Alerts:

None Forecasted



IMPORTANT FORECAST NOTES

- ✓ Favoring light rain to enter the area between 5:15pm – 5:45pm, before heavier rain and storms move in from 5:45pm – 7:45pm. The initial leading edge of storms can contain risks for strong to severe wind gusts (50 – 60 MPH), locally heavy rain and lightning.
- ✓ Between 7:45pm – 11:45pm, pockets of light rain/drizzle will be likely in 20 – 30-minute intervals. Each pocket can contain totals of trace-to-0.03”.
- ✓ Widespread light rain picks up beyond 11:45pm and persists through 6am. 0.25” will be possible overnight.

Dew Forecast

Wet grass expected Sunday AM from overnight rain.