

Houston Pilots Forecast Package

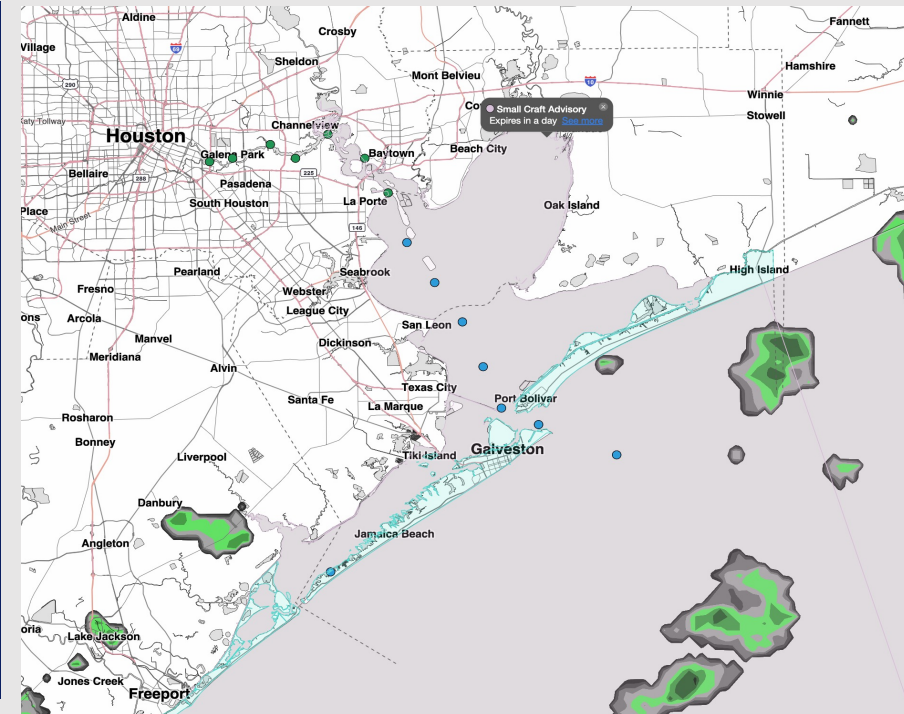


Updated: 2:40 AM CT
Sunday, April 5, 2026

Forecaster: John Kemper

Weather Headlines

- Scattered showers/downpours possible through this evening, with coverage to taper off by Monday AM
- **Gusts of 25 – 35 kts possible over the next 48 hours.**
- No fog concerns over the next 72 hours.



Current Radar: 2:30 AM CT

As always, please do not hesitate to reach out to us with any forecast questions at [\(317\)-560-8122](tel:317-560-8122). Press 1 for forecast questions.



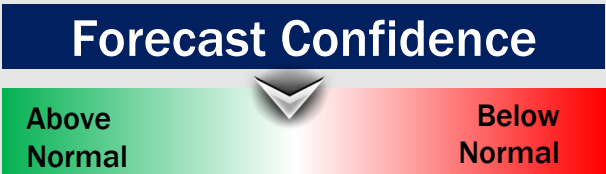
You can also access real-time forecast updates and 24/7 meteorological chat assistance on your [Clarity](#) app.

Houston Pilots Extended Range Visibility Report



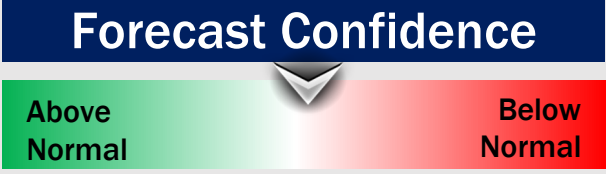
Wednesday 04/08/2026

Fog is not favored.



Thursday 04/09/2026

Fog is not favored.



Friday 04/10/2026

Fog is not favored.



Chance for Fog

Wednesday AM	Unlikely
Wednesday PM	Unlikely
Thursday AM	Unlikely
Thursday PM	Unlikely
Friday AM	Unlikely
Friday PM	Unlikely

Houston Pilots Visibility Chart (miles)



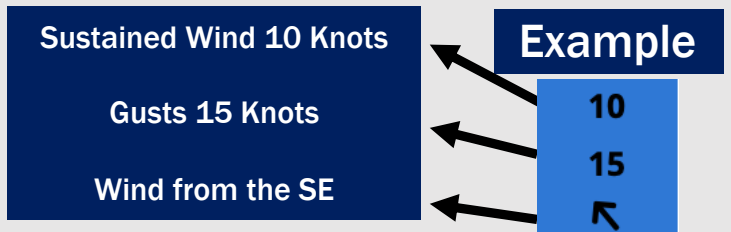
Forecast Confidence



Visibility	Sun 4 am	Sun 5 am	Sun 6 am	Sun 7 am	Sun 8 am	Sun 9 am	Sun 10 am	Sun 11 am	Sun 12 pm	Sun 1 pm	Sun 2 pm	Sun 3 pm	Sun 4 pm	Sun 5 pm	Sun 6 pm	Sun 7 pm	Sun 8 pm	Sun 9 pm	Sun 10 pm	Sun 11 pm	Mon 12 am	Mon 1 am	Mon 2 am	Mon 3 am
Houston Pilots N - 610 Bridge	4.9	4.9	4.9	6.9	6.9	4.9	4.9	5.9	6.9	7.9	7.9	9	10	9	9	9	7.9	10	10	10	10	10	9	9
Houston Pilots M - Kinder 1	4.9	4.9	4.9	6.9	6.9	4.9	4.9	5.9	5.9	7.9	7.9	9	10	9	9	9	7.9	10	10	10	10	10	9	9
Houston Pilots L - Greens Bayou	4.9	4.9	4.9	6.9	6.9	4.9	4.9	5.9	5.9	7.9	9	9	10	9	9	9	9	10	10	10	10	10	9	9
Houston Pilots K - Shell Crude	4.9	3.9	4.9	6.9	6.9	4.9	4.9	5.9	5.9	7.9	9	9	10	9	9	9	9	10	10	10	10	10	9	9
Houston Pilots J - Lynchburg Ferries	4.9	4.9	4.9	7.9	6.9	4.9	4.9	5.9	6.9	7.9	9	9	10	9	9	9	9	10	10	10	10	10	9	9
Houston Pilots I - Exxon 3	4.9	3.9	4.9	6.9	6.9	4.9	4.9	5.9	5.9	7.9	9	9	10	9	9	9	9	10	10	10	10	10	9	9
Houston Pilots H - Morgans Point	4.9	4.9	4.9	6.9	6.9	4.9	4.9	5.9	5.9	7.9	9	9	10	9	9	9	9	10	10	10	10	10	9	9
Houston Pilots G - 75/76	4.9	4.9	5.9	6.9	6.9	4.9	4.9	5.9	5.9	6.9	6.9	6.9	6.9	6.9	6.9	5.9	6.9	7.9	10	6.9	6.9	6.9	10	10
Houston Pilots F - 63/64	4.9	4.9	5.9	6.9	5.9	4.9	4.9	4.9	5.9	6.9	6.9	6.9	6.9	6.9	6.9	5.9	6.9	7.9	10	6.9	6.9	6.9	10	10
Houston Pilots E - 51/52	4.9	4.9	5.9	6.9	5.9	4.9	4.9	4.9	4.9	5.9	6.9	6.9	5.9	5.9	5.9	5.9	6.9	6.9	10	6.9	6.9	6.9	10	10
Houston Pilots D - 37/38	4.9	4.9	5.9	6.9	5.9	4.9	4.9	4.9	4.9	5.9	6.9	5.9	5.9	4.9	5.9	4.9	6.9	6.9	9	5.9	6.9	6.9	10	10
Houston Pilots C - 25/26	4.9	4.9	5.9	6.9	6.9	4.9	4.9	4.9	4.9	5.9	5.9	5.9	4.9	4.9	5.9	4.9	6.9	6.9	9	5.9	5.9	6.9	10	10
Houston Pilots B - 11/12	4.9	4.9	5.9	5.9	5.9	4.9	4.9	4.9	4.9	4.9	5.9	5.9	4.9	3.9	4.9	4.9	6.9	6.9	9	5.9	5.9	5.9	10	10
Houston Pilots A - 1 & 2 Bravo	4.9	4.9	4.9	5.9	5.9	4.9	4.9	4.9	4.9	4.9	4.9	5.9	2.9	2.9	3.9	3.9	4.9	5.9	7.9	5.9	5.9	5.9	10	10

NOTE: This is automated data that may/may not agree with the official BAM thinking that's found on the daily slides or special visibility report slides. This data should be used as a guide only

Houston Pilots Wind Chart



Wind	Sun 4 am	Sun 5 am	Sun 6 am	Sun 7 am	Sun 8 am	Sun 9 am	Sun 10 am	Sun 11 am	Sun 12 pm	Sun 1 pm	Sun 2 pm	Sun 3 pm	Sun 4 pm	Sun 5 pm	Sun 6 pm	Sun 7 pm	Sun 8 pm	Sun 9 pm	Sun 10 pm	Sun 11 pm	Mon 12 am	Mon 1 am	Mon 2 am	Mon 3 am
Houston Pilots N - 610 Bridge	10 22 ↓	12 23 ↓	13 24 ↓	13 25 ↓	13 25 ↓	14 26 ↓	14 25 ↓	13 25 ↓	13 26 ↓	13 26 ↓	13 24 ↓	13 24 ↓	12 24 ↓	12 24 ↓	12 23 ↓	10 21 ↓	10 20 ↓	9 18 ↓	9 20 ↓	9 18 ↓	9 18 ↓	8 17 ↓	8 17 ↓	8 17 ↓
Houston Pilots M - Kinder 1	10 21 ↓	12 23 ↓	13 24 ↓	13 25 ↓	13 25 ↓	13 25 ↓	13 25 ↓	13 25 ↓	14 26 ↓	13 26 ↓	13 24 ↓	13 24 ↓	12 24 ↓	12 23 ↓	12 23 ↓	10 21 ↓	10 20 ↓	9 18 ↓	9 20 ↓	9 18 ↓	9 18 ↓	8 17 ↓	8 17 ↓	8 17 ↓
Houston Pilots L - Greens Bayou	10 21 ↓	12 22 ↓	13 24 ↓	13 25 ↓	13 25 ↓	13 25 ↓	13 25 ↓	14 25 ↓	14 25 ↓	13 25 ↓	13 24 ↓	13 24 ↓	13 24 ↓	12 23 ↓	12 22 ↓	10 21 ↓	10 20 ↓	9 18 ↓	9 18 ↓	9 18 ↓	9 18 ↓	8 17 ↓	8 17 ↓	8 17 ↓
Houston Pilots K - Shell Crude	10 21 ↓	12 22 ↓	13 24 ↓	13 25 ↓	13 25 ↓	14 26 ↓	14 26 ↓	14 26 ↓	14 26 ↓	14 25 ↓	13 24 ↓	13 24 ↓	13 24 ↓	12 23 ↓	12 22 ↓	10 21 ↓	10 20 ↓	9 18 ↓	9 20 ↓	9 18 ↓	9 18 ↓	8 17 ↓	8 17 ↓	8 17 ↓
Houston Pilots J - Lynchburg Ferries	10 21 ↓	12 22 ↓	13 23 ↓	13 24 ↓	13 24 ↓	13 25 ↓	13 25 ↓	13 25 ↓	14 25 ↓	14 25 ↓	13 24 ↓	13 24 ↓	13 24 ↓	13 23 ↓	12 22 ↓	10 21 ↓	10 20 ↓	9 18 ↓	9 18 ↓	9 18 ↓	8 18 ↓	8 17 ↓	8 17 ↓	8 17 ↓
Houston Pilots I - Exxon 3	14 21 ↓	15 23 ↓	16 24 ↓	17 25 ↓	17 25 ↓	17 25 ↓	16 25 ↓	15 25 ↓	15 25 ↓	15 25 ↓	14 24 ↓	14 24 ↓	14 24 ↓	14 23 ↓	14 23 ↓	14 22 ↓	13 20 ↓	13 20 ↓	13 20 ↓	13 20 ↓	13 20 ↓	13 18 ↓	13 18 ↓	13 18 ↓
Houston Pilots H - Morgans Point	14 21 ↓	15 23 ↓	16 24 ↓	16 25 ↓	17 25 ↓	17 26 ↓	16 26 ↓	15 26 ↓	15 26 ↓	15 26 ↓	14 24 ↓	15 24 ↓	14 24 ↓	14 24 ↓	14 22 ↓	14 21 ↓	13 20 ↓	13 20 ↓	13 20 ↓	13 20 ↓	13 20 ↓	13 20 ↓	13 20 ↓	13 20 ↓
Houston Pilots G - 75/76	16 23 ↓	17 24 ↓	18 26 ↓	20 28 ↓	20 28 ↓	20 29 ↓	20 29 ↓	18 29 ↓	17 28 ↓	17 26 ↓	16 26 ↓	16 26 ↓	15 26 ↓	15 25 ↓	16 25 ↓	15 24 ↓	15 23 ↓	15 23 ↓	15 23 ↓	15 23 ↓	15 23 ↓	15 23 ↓	15 22 ↓	15 23 ↓
Houston Pilots F - 63/64	16 23 ↓	17 25 ↓	18 28 ↓	20 28 ↓	20 29 ↓	20 29 ↓	20 29 ↓	20 29 ↓	18 29 ↓	17 28 ↓	16 28 ↓	16 28 ↓	16 26 ↓	15 25 ↓	16 25 ↓	15 24 ↓	15 23 ↓	15 23 ↓	16 24 ↓	16 24 ↓	16 24 ↓	16 23 ↓	16 23 ↓	16 24 ↓
Houston Pilots E - 51/52	15 22 ↓	17 25 ↓	20 28 ↓	20 29 ↓	21 30 ↓	22 30 ↓	22 30 ↓	21 29 ↓	20 29 ↓	18 29 ↓	17 29 ↓	17 28 ↓	17 26 ↓	16 25 ↓	16 25 ↓	16 24 ↓	15 23 ↓	16 23 ↓	17 24 ↓	17 25 ↓	17 25 ↓	17 25 ↓	17 24 ↓	17 25 ↓
Houston Pilots D - 37/38	15 21 ↓	17 24 ↓	18 28 ↓	20 29 ↓	21 30 ↓	22 30 ↓	21 30 ↓	21 30 ↓	20 29 ↓	18 29 ↓	17 29 ↓	17 26 ↓	17 25 ↓	16 25 ↓	16 25 ↓	16 24 ↓	16 24 ↓	17 24 ↓	17 25 ↓	17 25 ↓	17 26 ↓	17 26 ↓	17 25 ↓	17 26 ↓
Houston Pilots C - 25/26	14 20 ↓	16 23 ↓	18 26 ↓	20 29 ↓	21 30 ↓	22 30 ↓	22 30 ↓	22 30 ↓	21 29 ↓	20 29 ↓	20 29 ↓	18 29 ↓	17 26 ↓	17 25 ↓	17 25 ↓	16 24 ↓	16 24 ↓	17 24 ↓	17 25 ↓	17 26 ↓	18 26 ↓	17 26 ↓	17 25 ↓	18 26 ↓
Houston Pilots B - 11/12	13 18 ↓	15 21 ↓	17 24 ↓	18 26 ↓	20 28 ↓	20 29 ↓	21 29 ↓	21 29 ↓	21 29 ↓	20 28 ↓	20 28 ↓	18 28 ↓	17 26 ↓	17 24 ↓	17 24 ↓	16 23 ↓	15 22 ↓	16 23 ↓	17 24 ↓	17 24 ↓	17 24 ↓	17 24 ↓	16 25 ↓	17 24 ↓
Houston Pilots A - 1 & 2 Bravo	13 20 ↓	15 22 ↓	17 25 ↓	20 28 ↓	21 30 ↓	22 31 ↓	22 31 ↓	22 31 ↓	22 31 ↓	21 30 ↓	20 29 ↓	18 28 ↓	18 26 ↓	17 25 ↓	17 25 ↓	17 25 ↓	17 25 ↓	18 26 ↓	20 28 ↓	20 28 ↓	20 28 ↓	20 28 ↓	20 26 ↓	20 28 ↓

NOTE: This is automated data that may/may not agree with the official BAM thinking that's found on the daily slides. This data should be used as a guide only.

Houston Pilots: SUN. 04/05/2026



Forecast Discussion

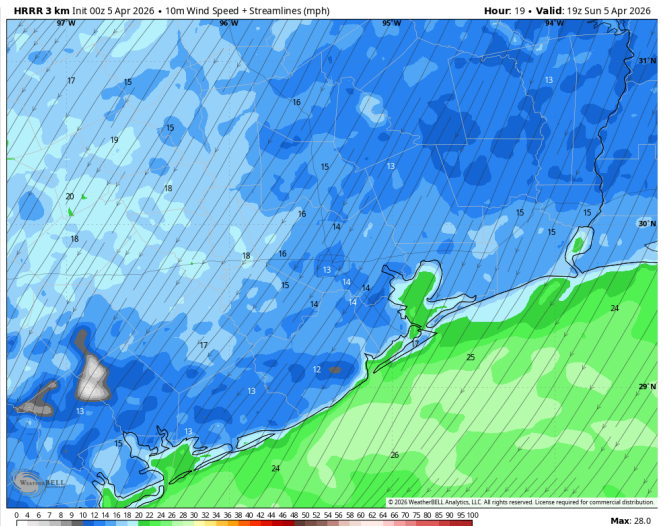
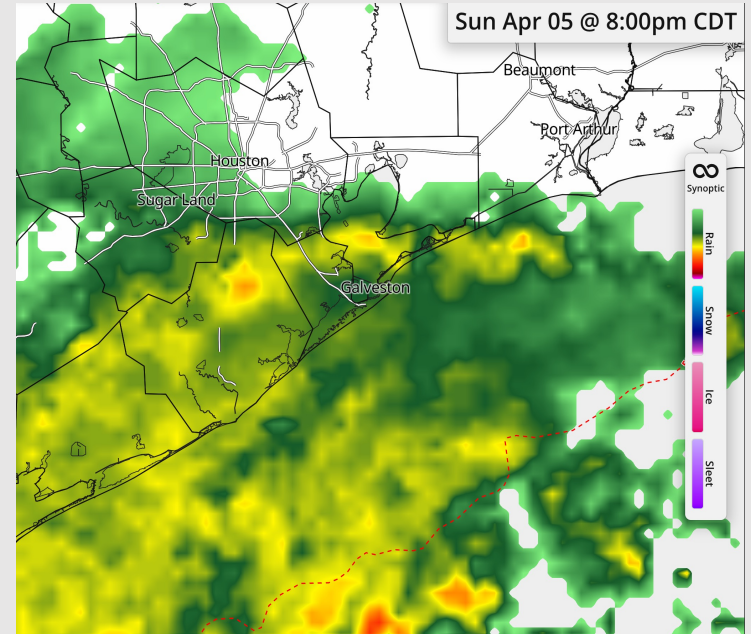
Precip: A few instances of isolated drizzle can continue through 8AM-CT before drier air will return. After 6PM, widespread showers and downpours will return to all stations.

Wind: Winds out of the NNE through the day. **N of Morgan's Point:** Winds of 7 – 12 kts for the entire day. **Gusts up to 24 kts.** **S of Morgan's Point:** Winds of 16 – 21 kts through the day. **Gusts of 25 – 30 kts possible throughout the day.** **A few gusts of up to 35kts possible after 9PM.**

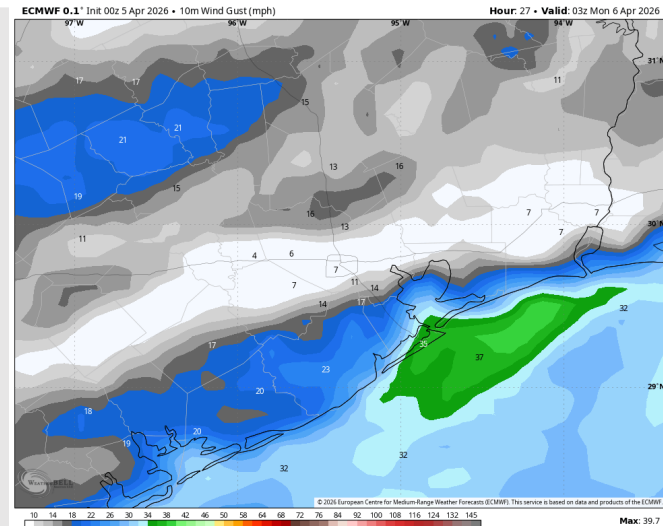
High Temps: **N of Morgan's Point:** Low 70s F. **S of Morgan's Point:** Low 70s F.

Visibility: No visibility concerns for today.

Precip Image: 8 PM CT



**Wind Speed:
2 PM CT**



**MAX GUSTS
10 PM SUN**

Houston Pilots: MON. 04/06/2026



Forecast Discussion

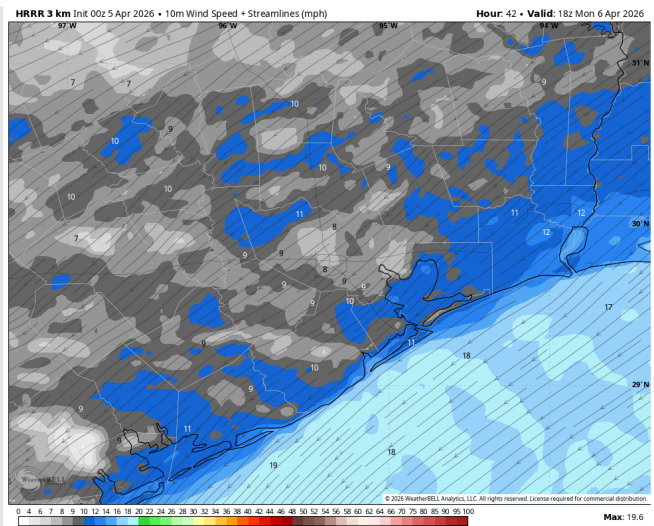
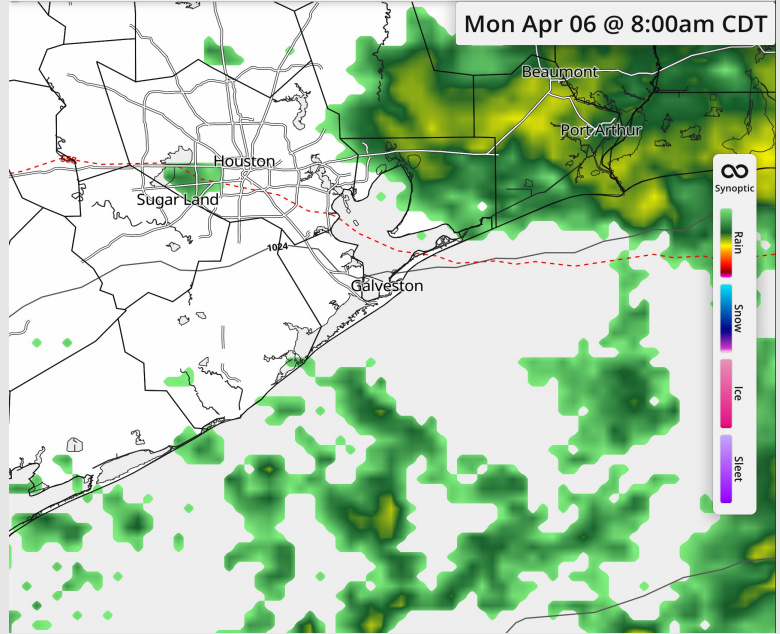
Precip Image: 8 AM CT

Precip: Lingering scattered light showers possible through 10AM.

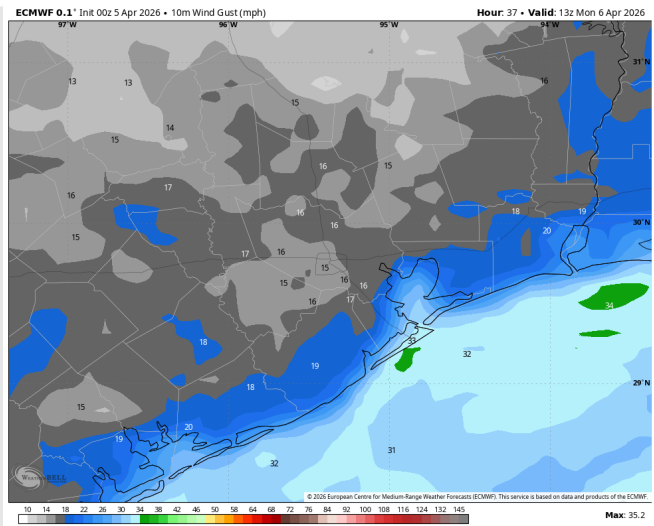
Wind: Winds out of the NE - ENE through the day. **N of Morgan's Point:** Winds of 5 - 10 kts. **S of Morgan's Point:** Winds of 15 - 20 kts, decreasing to 12 - 16 kts after 9AM. **Gusts up to 25 kts for all Stations on Monday through 12PM, with greater frequency south of Morgan's Point.**

High Temps: **N of Morgan's Point:** Low 70s F. **S of Morgan's Point:** Upper 60s F.

Visibility: No visibility concerns for Monday.



**Wind Speed:
1 PM CT**



**MAX GUSTS
Monday**

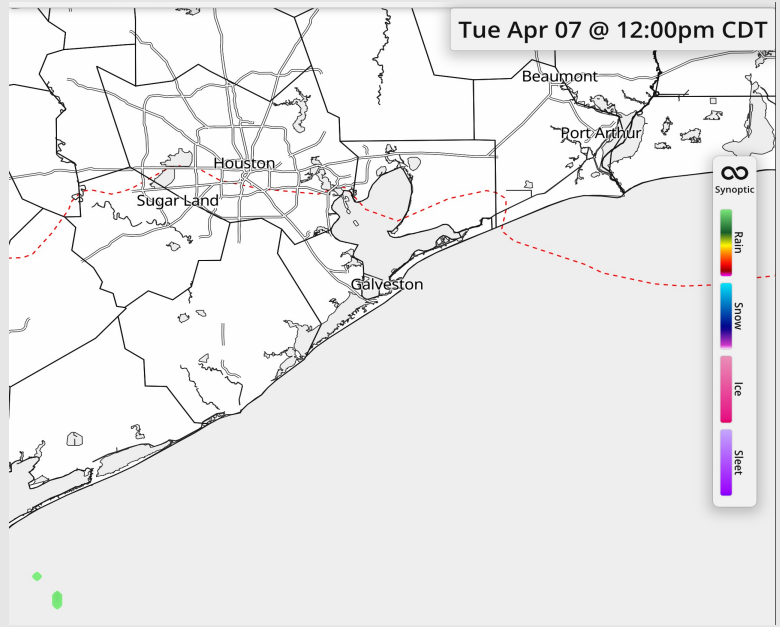
Houston Pilots: TUE. 04/07/2026



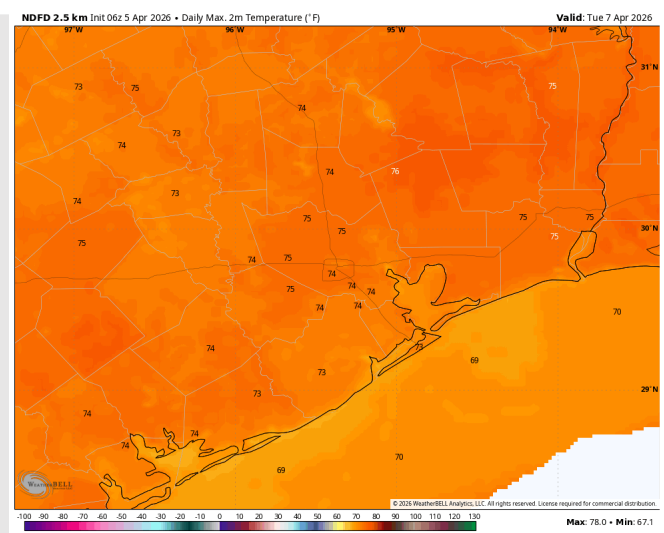
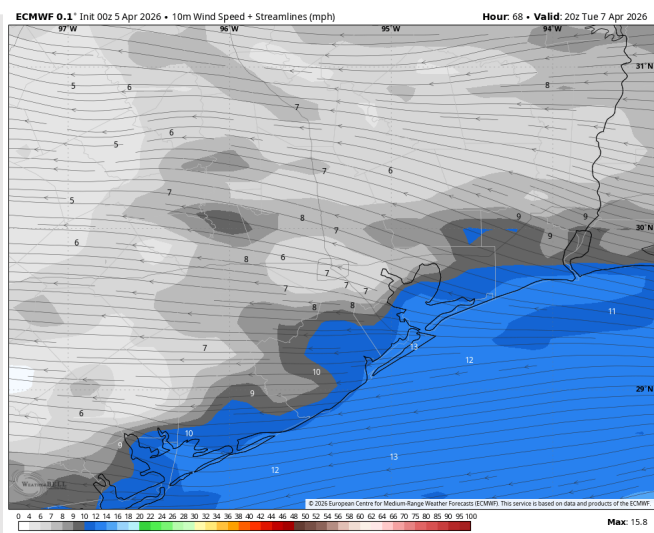
Forecast Discussion

- Precip:** Favoring dry conditions for Tuesday.
- Wind:** Winds out of the E through the day before shifting out of the ESE after 6PM. **N of Morgan's Point:** Winds of 3 – 8 kts. **S of Morgan's Point:** Winds of 8 – 13 kts.
- High Temps:** **N of Morgan's Point:** Mid 70s F. **S of Morgan's Point:** Upper 60s F.
- Visibility:** No fog concerns for Tuesday

Precip Image: 12 PM CT



Wind Speed:
3 PM CT

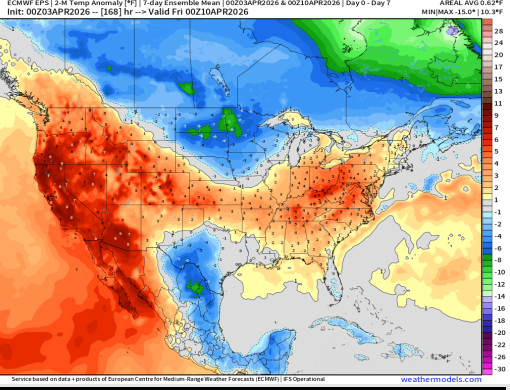


High Temps
Tuesday

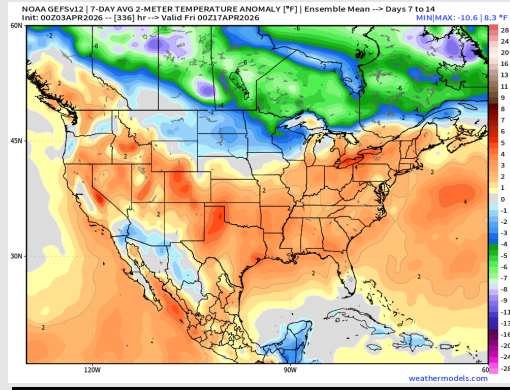
Houston Pilots: 04/05/2026



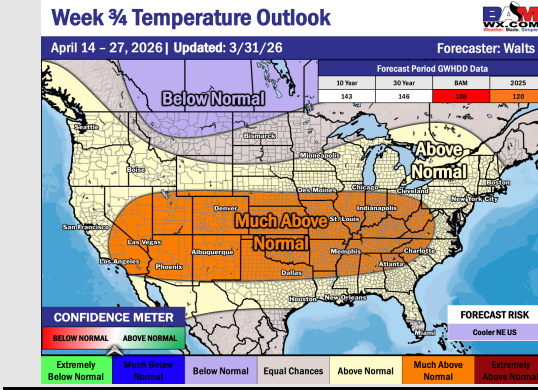
Next 7 Day Temperature Departure



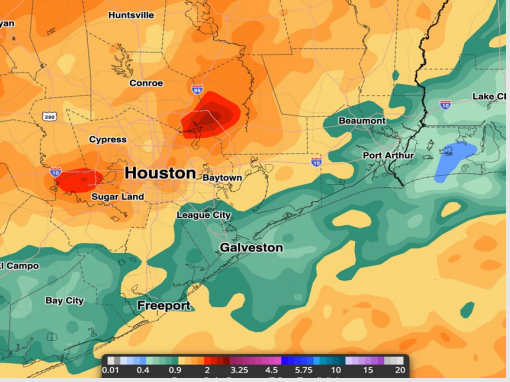
8-14 Day Temperature Departure



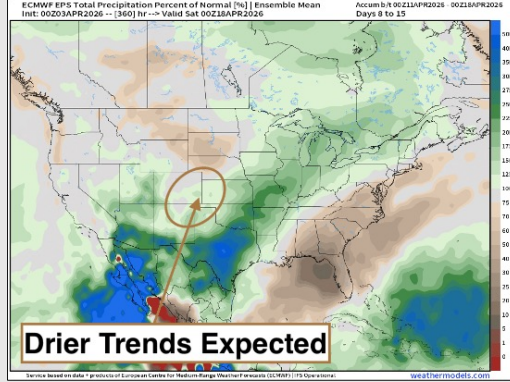
15-30 Day Temperature Departure



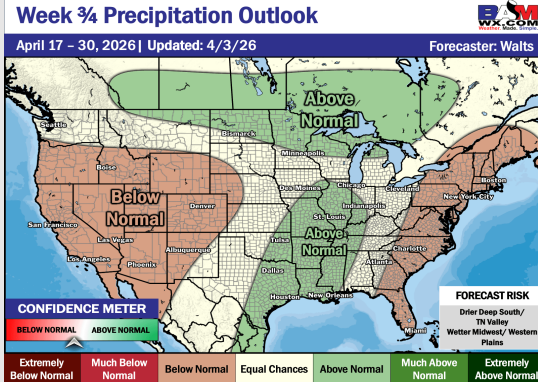
Next 7 Day Total Precipitation



8-14 Day % of Average Precip.



15-30 Day % of Average Precip.



- Near-normal temps are favored over the next 7 days, with daily rain/storm chances through the week.
- Above normal temperatures and above normal rain chances in the Week 2 period.
- Above normal temperatures and above normal rainfall expected for the latter half of April.