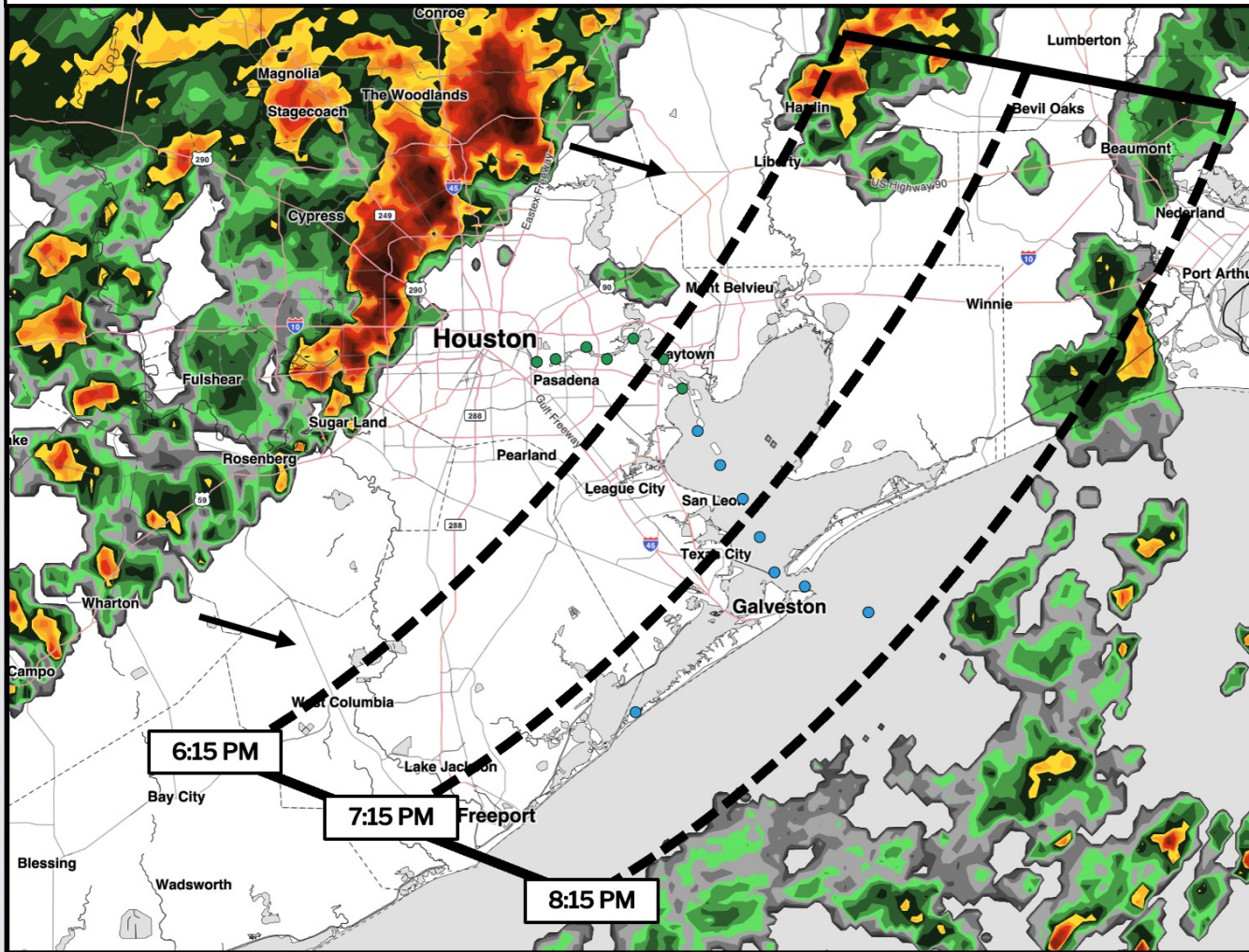


- ✓ A gust front has developed 10 minutes ahead of a broken storm line.
- ✓ Gusts of 34kts expected, with a few localized gusts of up to 43 kts possible as gust front works over the bay.



Houston Pilots Forecast Package



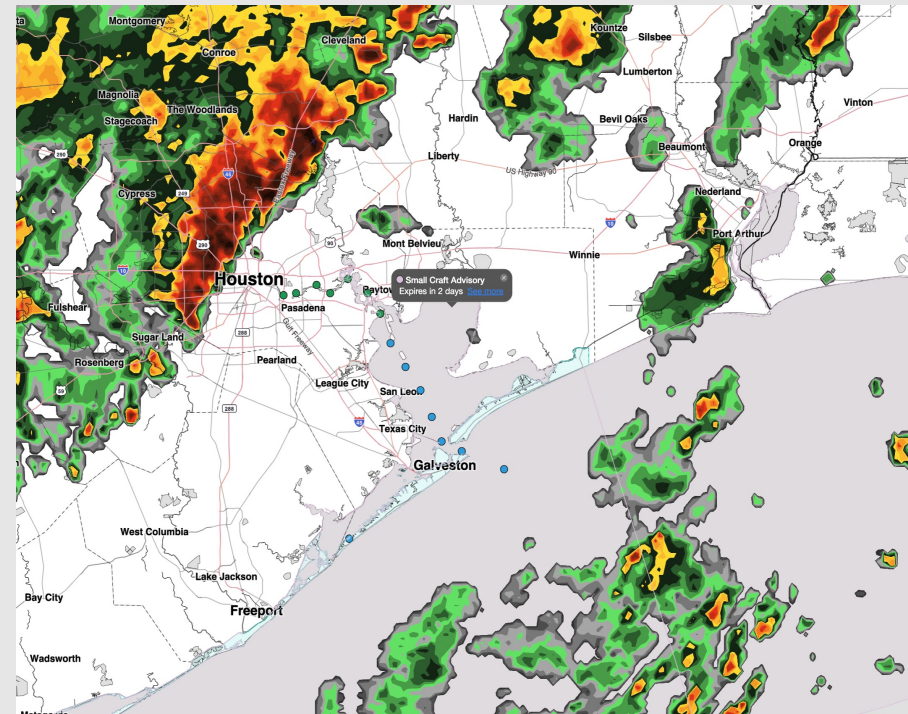
Updated: 5:30 PM CT

Saturday, April 4th, 2026

Forecaster: John Kemper

Weather Headlines

- Scattered showers/storms are possible over the next 48 hours. A few stronger storms are possible tonight just after 5:45PM CDT.
- **Gusts of 25 – 30 kts possible over the next 48-72 hours, particularly on SUN into MON AM in the Bay!**
- No fog concerns over the next 72 hours.



Current Radar: 2:35 PM CT

As always, please do not hesitate to reach out to us with any forecast questions at [\(317\)-560-8122](tel:317-560-8122). Press 1 for forecast questions.



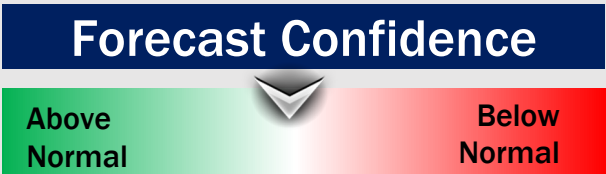
You can also access real-time forecast updates and 24/7 meteorological chat assistance on your [Clarity](#) app.

Houston Pilots Extended Range Visibility Report



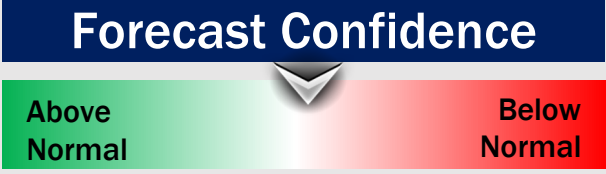
Tuesday 04/07/2026

Fog is not favored.



Wednesday 04/08/2026

Fog is not favored.



Thursday 04/09/2026

Fog is not favored.



Chance for Fog

Tuesday AM	Unlikely
Tuesday PM	Unlikely
Wednesday AM	Unlikely
Wednesday PM	Unlikely
Thursday AM	Unlikely
Thursday PM	Unlikely

Houston Pilots Visibility Chart (miles)



Forecast Confidence



Visibility	Sat 4 pm	Sat 5 pm	Sat 6 pm	Sat 7 pm	Sat 8 pm	Sat 9 pm	Sat 10 pm	Sat 11 pm	Sun 12 am	Sun 1 am	Sun 2 am	Sun 3 am	Sun 4 am	Sun 5 am	Sun 6 am	Sun 7 am	Sun 8 am	Sun 9 am	Sun 10 am	Sun 11 am	Sun 12 pm	Sun 1 pm	Sun 2 pm	Sun 3 pm
Houston Pilots N - 610 Bridge	10	10	10	7.9	3.9	4.9	6.9	6.9	6.9	6.9	7.9	9	10	10	10	10	10	10	10	10	10	10	10	10
Houston Pilots M - Kinder 1	10	10	10	7.9	3.9	4.9	6.9	6.9	6.9	6.9	7.9	9	10	10	10	10	10	10	10	10	10	10	10	10
Houston Pilots L - Greens Bayou	10	10	10	7.9	3.9	4.9	6.9	6.9	6.9	6.9	6.9	7.9	10	10	10	10	10	10	10	10	10	10	10	10
Houston Pilots K - Shell Crude	10	10	10	7.9	3.9	4.9	6.9	6.9	6.9	6.9	6.9	7.9	10	10	10	10	10	10	10	10	10	10	10	10
Houston Pilots J - Lynchburg Ferries	10	10	10	7.9	3.9	4.9	6.9	6.9	6.9	6.9	7.9	7.9	10	10	10	10	10	10	10	10	10	10	10	10
Houston Pilots I - Exxon 3	10	10	10	7.9	3.9	4.9	6.9	6.9	6.9	6.9	6.9	7.9	10	10	10	10	10	10	10	10	10	10	10	10
Houston Pilots H - Morgans Point	10	10	10	7.9	6.9	4.9	6.9	5.9	6.9	6.9	6.9	6.9	9	10	10	10	10	10	10	10	10	10	10	10
Houston Pilots G - 75/76	10	7.9	6.9	7.9	6.9	4.9	6.9	5.9	4.9	4.9	3.9	4.9	4.9	4.9	6.9	7.9	10	3.9	4.9	4.9	4.9	4.9	4.9	10
Houston Pilots F - 63/64	10	7.9	6.9	7.9	6.9	5.9	6.9	5.9	4.9	4.9	3.9	4.9	4.9	4.9	6.9	6.9	10	3.9	4.9	4.9	4.9	4.9	4.9	10
Houston Pilots E - 51/52	6.9	6.9	6.9	6.9	6.9	5.9	6.9	5.9	4.9	4.9	3.9	3.9	4.9	4.9	5.9	6.9	7.9	3.9	3.9	3.9	3.9	4.9	3.9	10
Houston Pilots D - 37/38	6.9	6.9	6.9	6.9	6.9	5.9	6.9	5.9	4.9	4.9	3.9	3.9	4.9	4.9	5.9	6.9	7.9	3.9	3.9	3.9	3.9	3.9	3.9	10
Houston Pilots C - 25/26	6.9	6.9	6.9	6.9	6.9	5.9	6.9	5.9	4.9	4.9	3.9	3.9	4.9	4.9	5.9	6.9	7.9	3.9	3.9	3.9	3.9	3.9	2.9	10
Houston Pilots B - 11/12	6.9	6.9	6.9	6.9	6.9	5.9	6.9	5.9	4.9	3.9	3.9	3.9	3.9	3.9	4.9	6.9	6.9	2.9	3.9	3.9	3.9	3.9	2.9	10
Houston Pilots A - 1 & 2 Bravo	6.9	5.9	5.9	6.9	5.9	5.9	6.9	5.9	4.9	3.9	3.9	2.9	2.5	2.5	4.9	4.9	4.9	2.5	2.9	2.9	2.9	2.9	10	10

NOTE: This is automated data that may/may not agree with the official BAM thinking that's found on the daily slides or special visibility report slides. This data should be used as a guide only

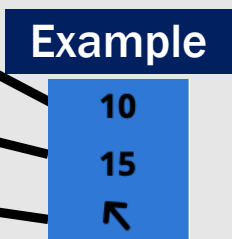
Houston Pilots Wind Chart



Forecast Confidence



Sustained Wind 10 Knots
Gusts 15 Knots
Wind from the SE



Wind	Sat 4 pm	Sat 5 pm	Sat 6 pm	Sat 7 pm	Sat 8 pm	Sat 9 pm	Sat 10 pm	Sat 11 pm	Sun 12 am	Sun 1 am	Sun 2 am	Sun 3 am	Sun 4 am	Sun 5 am	Sun 6 am	Sun 7 am	Sun 8 am	Sun 9 am	Sun 10 am	Sun 11 am	Sun 12 pm	Sun 1 pm	Sun 2 pm	Sun 3 pm
Houston Pilots N - 610 Bridge	8 17 ↑	8 16 ↑	7 15 ↑	7 13 ↑	6 10 ↓	6 12 ↓	6 12 ↓	6 13 ↓	7 14 ↓	8 16 ↓	8 17 ↓	9 20 ↓	10 20 ↓	10 22 ↓	12 23 ↓	13 24 ↓	13 25 ↓	13 25 ↓	13 25 ↓	13 25 ↓	13 26 ↓	13 26 ↓	13 25 ↓	12 24 ↓
Houston Pilots M - Kinder 1	8 17 ↑	8 16 ↑	8 15 ↑	7 13 ↑	6 10 ↓	6 12 ↓	6 12 ↓	6 13 ↓	7 14 ↓	8 15 ↓	8 17 ↓	9 20 ↓	10 20 ↓	10 22 ↓	12 23 ↓	13 24 ↓	13 25 ↓	13 25 ↓	13 25 ↓	13 25 ↓	13 26 ↓	13 25 ↓	13 24 ↓	13 24 ↓
Houston Pilots L - Greens Bayou	9 17 ↑	9 16 ↑	8 15 ↑	7 13 ↑	6 10 ↓	6 12 ↓	6 12 ↓	6 12 ↓	7 13 ↓	8 15 ↓	8 17 ↓	9 18 ↓	10 20 ↓	10 21 ↓	12 23 ↓	13 24 ↓	13 25 ↓	13 25 ↓	13 25 ↓	13 25 ↓	14 25 ↓	13 25 ↓	13 24 ↓	13 23 ↓
Houston Pilots K - Shell Crude	9 17 ↑	9 16 ↑	8 15 ↑	7 13 ↑	6 10 ↓	6 10 ↓	6 12 ↓	6 12 ↓	6 13 ↓	8 14 ↓	8 16 ↓	9 18 ↓	10 20 ↓	10 21 ↓	12 23 ↓	13 24 ↓	13 25 ↓	13 26 ↓	14 25 ↓	14 25 ↓	14 25 ↓	14 25 ↓	14 24 ↓	13 24 ↓
Houston Pilots J - Lynchburg Ferries	9 18 ↑	9 17 ↑	8 15 ↑	7 14 ↑	6 10 ↓	6 10 ↓	6 10 ↓	6 12 ↓	6 12 ↓	7 14 ↓	8 16 ↓	9 18 ↓	10 20 ↓	10 21 ↓	12 23 ↓	13 23 ↓	13 24 ↓	13 25 ↓	13 25 ↓	13 25 ↓	13 25 ↓	13 25 ↓	13 24 ↓	13 24 ↓
Houston Pilots I - Exxon 3	10 20 ↑	12 17 ↑	10 16 ↑	9 15 ↑	8 12 ↓	8 12 ↓	7 12 ↓	8 12 ↓	8 13 ↓	10 15 ↓	10 16 ↓	13 18 ↓	13 20 ↓	15 22 ↓	15 23 ↓	16 24 ↓	16 25 ↓	17 25 ↓	16 25 ↓	15 25 ↓	15 25 ↓	15 25 ↓	14 25 ↓	14 24 ↓
Houston Pilots H - Morgans Point	12 20 ↑	12 18 ↑	10 17 ↑	9 15 ↑	8 13 ↓	8 12 ↓	7 12 ↓	7 12 ↓	8 12 ↓	9 14 ↓	10 16 ↓	12 18 ↓	13 20 ↓	14 22 ↓	15 23 ↓	16 24 ↓	16 25 ↓	16 26 ↓	16 26 ↓	15 25 ↓	15 26 ↓	15 25 ↓	14 25 ↓	15 25 ↓
Houston Pilots G - 75/76	12 20 ↑	12 20 ↑	12 18 ↑	10 16 ↑	9 14 ↓	8 13 ↓	8 12 ↓	8 12 ↓	8 13 ↓	10 14 ↓	12 16 ↓	13 20 ↓	15 21 ↓	16 23 ↓	17 25 ↓	18 26 ↓	20 28 ↓	20 28 ↓	20 28 ↓	18 29 ↓	17 29 ↓	17 26 ↓	16 26 ↓	16 26 ↓
Houston Pilots F - 63/64	12 20 ↑	12 18 ↑	12 18 ↑	9 16 ↑	9 13 ↓	8 13 ↓	8 12 ↓	8 12 ↓	8 12 ↓	10 14 ↓	10 15 ↓	13 18 ↓	15 21 ↓	16 23 ↓	17 26 ↓	18 26 ↓	20 28 ↓	20 29 ↓	20 29 ↓	20 29 ↓	17 28 ↓	17 28 ↓	16 26 ↓	16 26 ↓
Houston Pilots E - 51/52	10 20 ↑	12 17 ↑	10 16 ↑	9 15 ↑	9 12 ↓	8 12 ↓	7 12 ↓	7 10 ↓	8 13 ↓	8 14 ↓	10 17 ↓	12 20 ↓	14 23 ↓	16 26 ↓	17 26 ↓	20 29 ↓	20 29 ↓	21 29 ↓	21 30 ↓	20 29 ↓	20 29 ↓	18 28 ↓	17 28 ↓	17 26 ↓
Houston Pilots D - 37/38	10 18 ↑	10 17 ↑	9 16 ↑	9 14 ↑	8 12 ↓	7 12 ↓	7 10 ↓	6 10 ↓	7 10 ↓	8 13 ↓	9 13 ↓	12 16 ↓	14 20 ↓	15 22 ↓	17 25 ↓	20 26 ↓	20 29 ↓	20 29 ↓	20 29 ↓	20 29 ↓	20 29 ↓	20 29 ↓	18 28 ↓	17 28 ↓
Houston Pilots C - 25/26	10 17 ↑	10 16 ↑	9 15 ↑	9 13 ↑	7 10 ↓	7 10 ↓	6 10 ↓	6 9 ↓	7 9 ↓	8 12 ↓	8 13 ↓	10 15 ↓	13 18 ↓	15 22 ↓	17 25 ↓	18 26 ↓	20 28 ↓	20 29 ↓	20 29 ↓	21 29 ↓	21 30 ↓	20 29 ↓	20 28 ↓	18 28 ↓
Houston Pilots B - 11/12	10 15 ↑	9 15 ↑	9 13 ↑	7 12 ↓	7 10 ↓	6 10 ↓	6 9 ↓	6 9 ↓	6 9 ↓	6 10 ↓	7 12 ↓	9 14 ↓	12 16 ↓	13 20 ↓	15 22 ↓	17 25 ↓	18 26 ↓	20 28 ↓	20 28 ↓	20 29 ↓	20 29 ↓	20 28 ↓	18 26 ↓	18 26 ↓
Houston Pilots A - 1 & 2 Bravo	8 14 ↑	8 14 ↑	8 13 ↑	8 13 ↑	7 12 ↓	7 12 ↓	6 10 ↓	6 10 ↓	6 9 ↓	7 10 ↓	8 12 ↓	9 14 ↓	12 17 ↓	14 20 ↓	16 23 ↓	17 26 ↓	20 28 ↓	20 29 ↓	20 30 ↓	21 30 ↓	22 30 ↓	20 29 ↓	20 28 ↓	18 26 ↓

NOTE: This is automated data that may/may not agree with the official BAM thinking that's found on the daily slides. This data should be used as a guide only.

Houston Pilots: SAT. 04/04/2026



Forecast Discussion

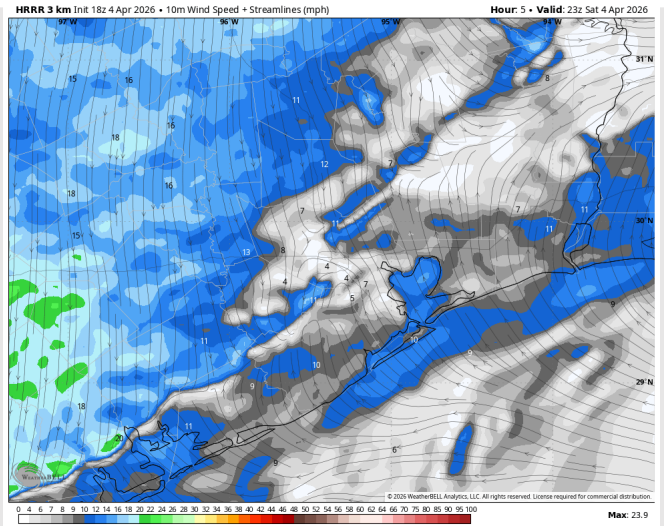
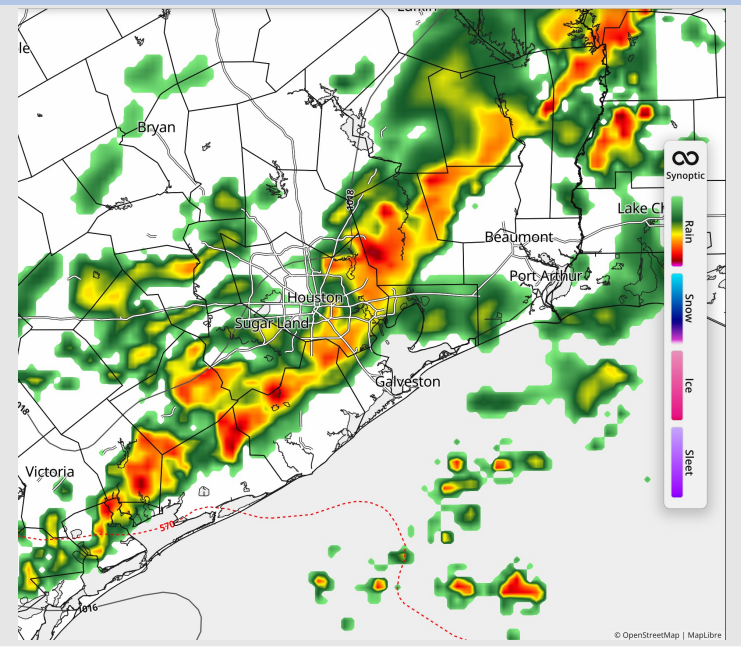
Precip: Scattered showers are expected through 7PM before a line of storms move in. Greatest potential exists after 7PM as a line of storms with gusts to 35 kts and small hail moves in, exiting around 12AM.

Wind: Winds out of the SSE through the day before shifting out of the NNE after 11PM. **N of Morgan's Point:** Winds of 5 – 10 kts. **S of Morgan's Point:** Winds of 8 – 13 kts.

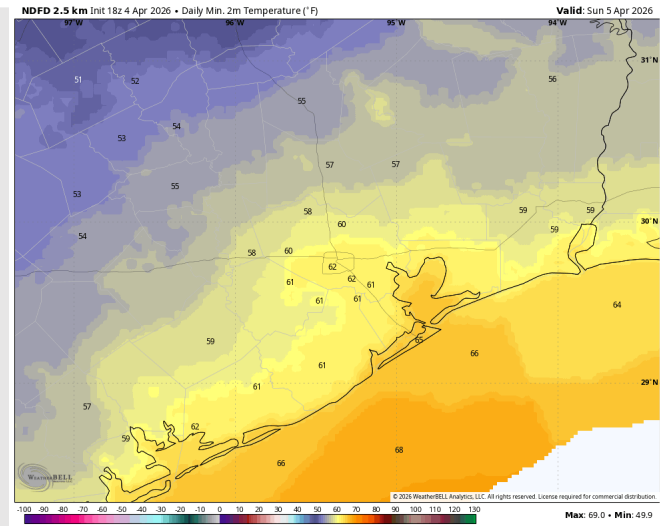
Low Temps: **N of Morgan's Point:** Low 60s F. **S of Morgan's Point:** Mid 60s F.

Visibility: No fog concerns, however, visibilities may be briefly reduced under heavy downpours during the evening.

Precip Image: 7 PM CT



Wind Speed:
6 PM CT



Low Temps
SUN AM

Houston Pilots: SUN. 04/05/2026



Forecast Discussion

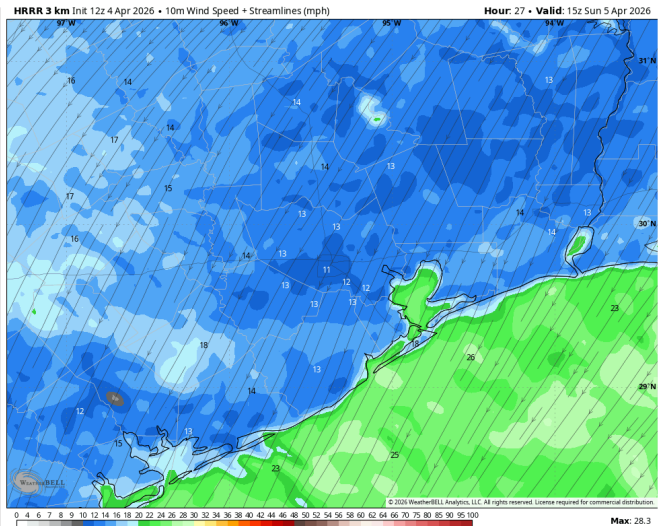
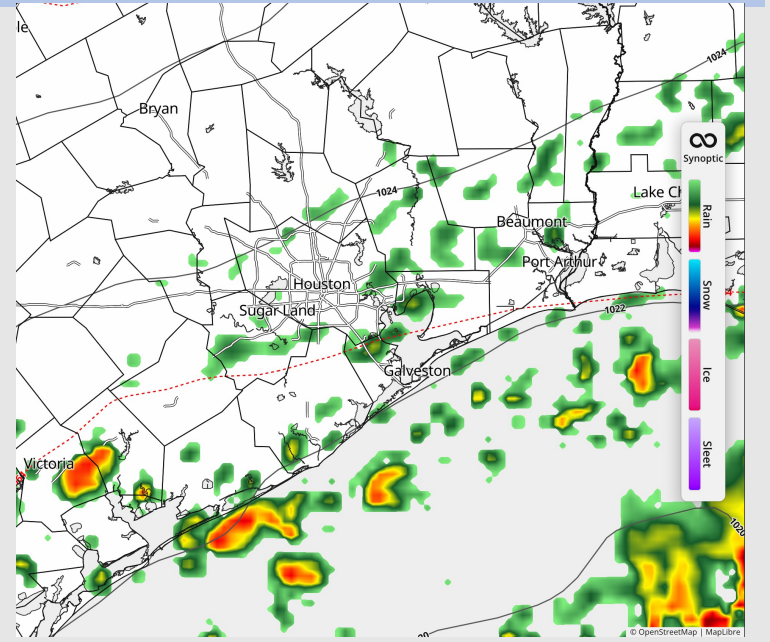
Precip: Scattered showers and a few downpours to continue through 5AM. From 5AM – 4PM we are favoring only scattered pockets of drizzle. After 4PM, more widespread showers begin to work from NW to SE across all stations.

Wind: Winds out of the NNE through the day. **N of Morgan's Point:** Winds of 7 – 12 kts through 7PM, decreasing to 5 - 10 kts thereafter. **Gusts up to 24 kts.** **S of Morgan's Point:** Winds of 16 – 21 kts through the day. **Gusts of 25 – 30 kts possible throughout the day.**

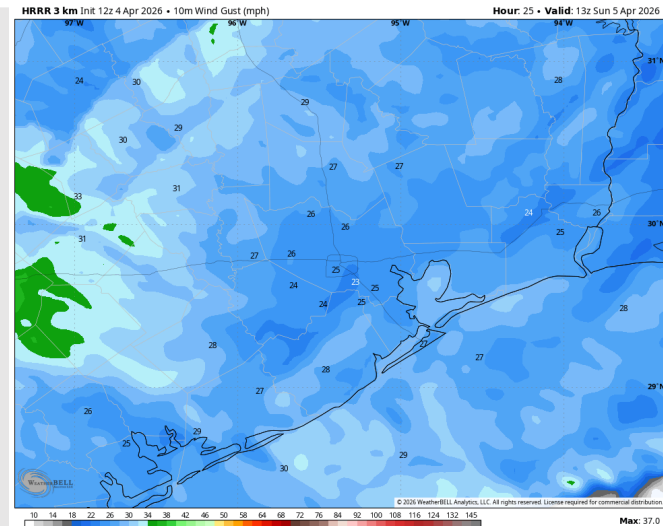
High Temps: **N of Morgan's Point:** Low 70s F. **S of Morgan's Point:** Low 70s F.

Visibility: No visibility concerns for SUN.

Precip Image: 10 AM CT



**Wind Speed:
10 AM CT**



**PEAK GUSTS
7 AM SUN**

Forecast Discussion

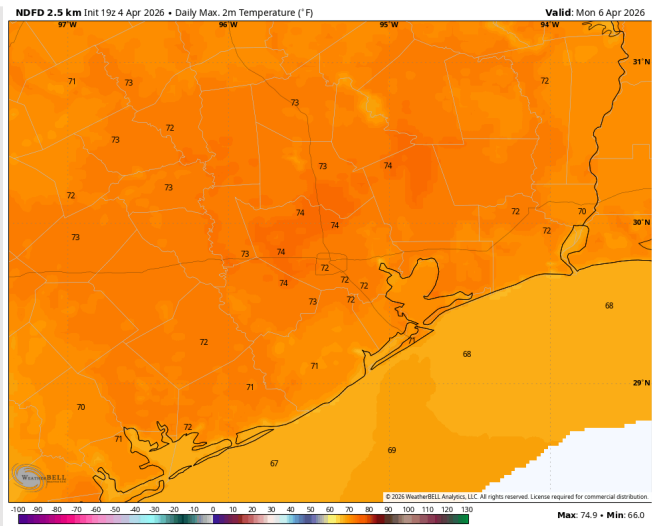
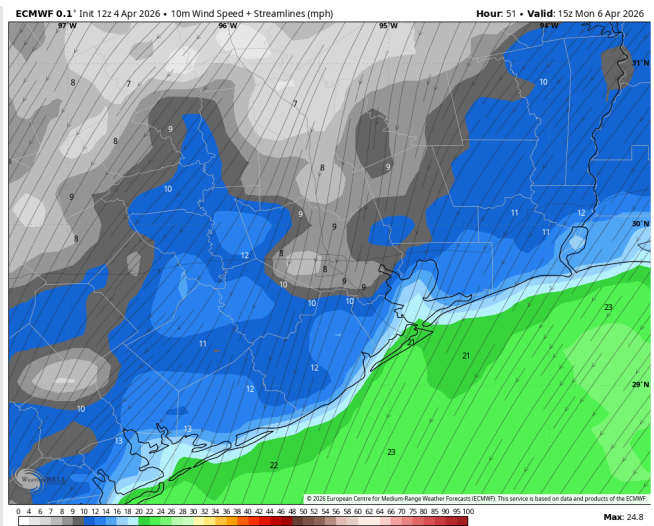
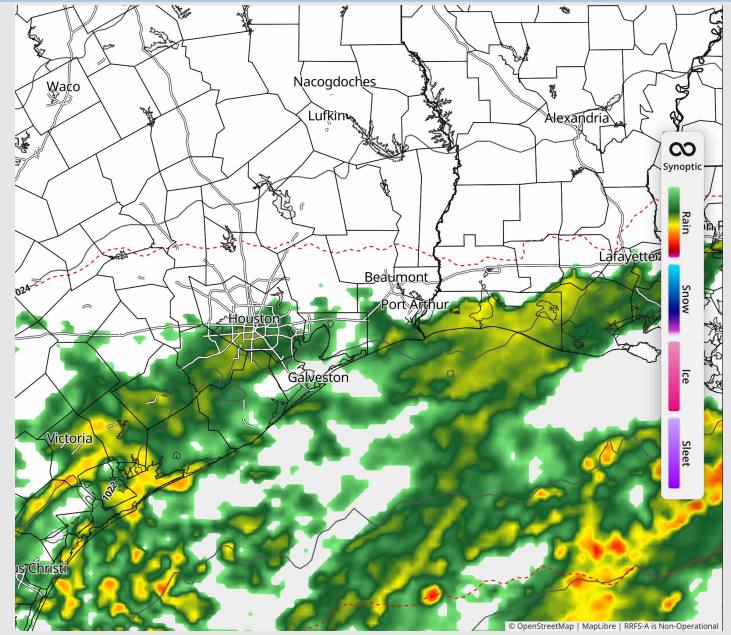
Precip: Lingering scattered light showers possible through 9AM.

Wind: Winds out of the NE through the day. **N of Morgan's Point:** Winds of 5 – 10 kts. **S of Morgan's Point:** Winds of 15 – 20 kts, decreasing to 12 – 16 kts after 11AM. **Gusts up to 25 kts for all Stations on Monday, with greater frequency south of Morgan's Point.**

High Temps: **N of Morgan's Point:** Low 70s F. **S of Morgan's Point:** Upper 60s F.

Visibility: No visibility concerns for Monday.

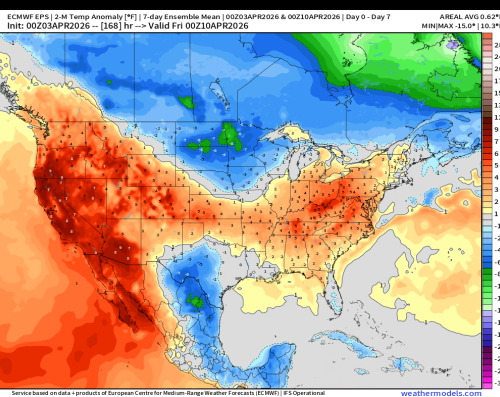
Precip Image: 5 AM CT



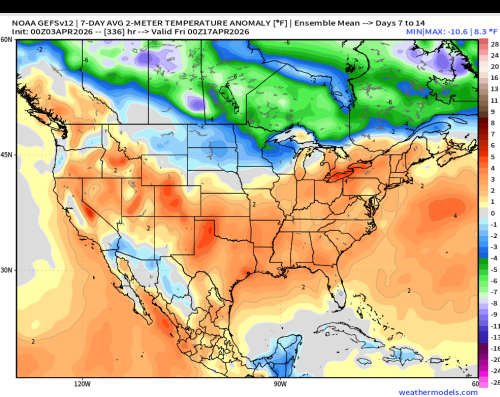
Houston Pilots: 04/04/2026



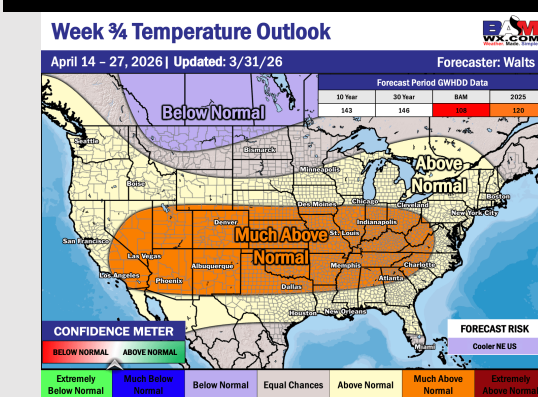
Next 7 Day Temperature Departure



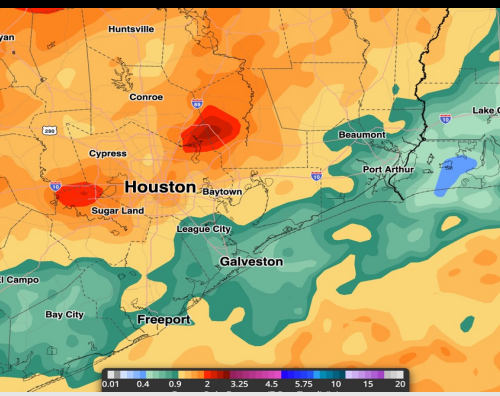
8-14 Day Temperature Departure



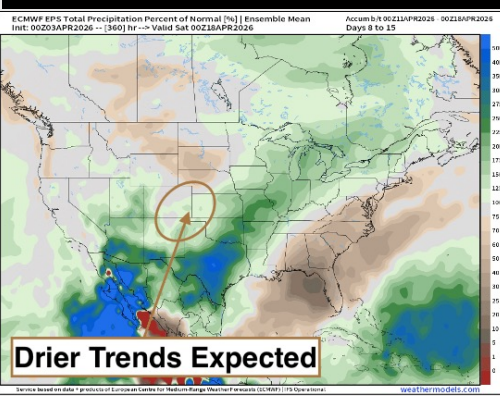
15-30 Day Temperature Departure



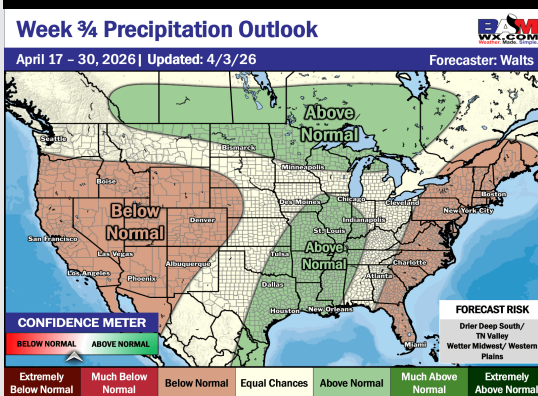
Next 7 Day Total Precipitation



8-14 Day % of Average Precip.



15-30 Day % of Average Precip.



- Near-normal temps are favored over the next 7 days, with daily rain/storm chances through the week.
- Above normal temperatures and above normal rain chances in the Week 2 period.
- Above normal temperatures and above normal rainfall expected for the latter half of April.