

# Houston Pilots Forecast Package



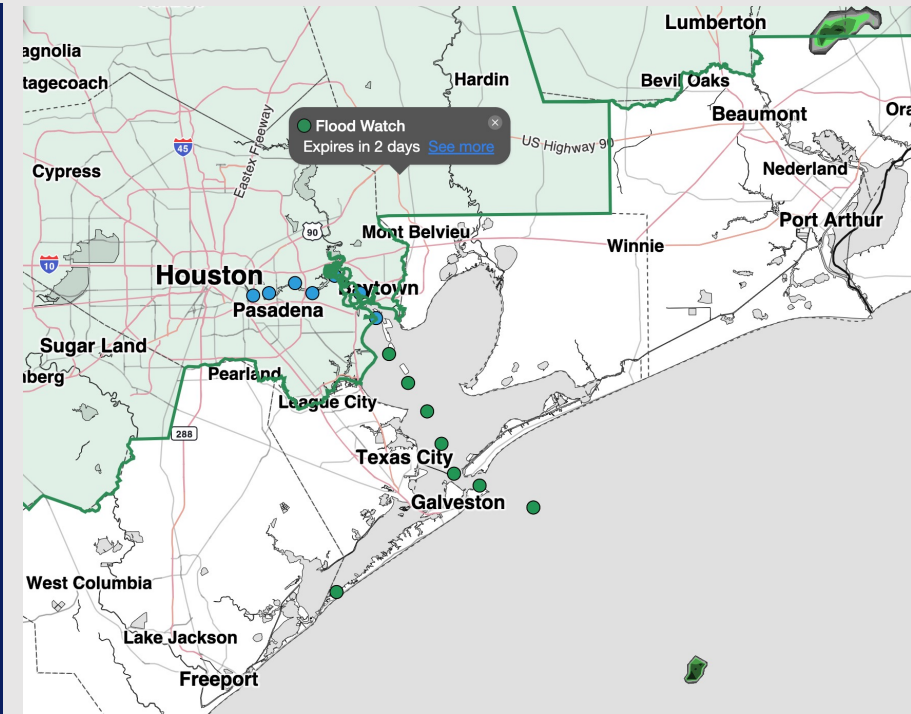
Updated: 2:57 PM CT

Thursday, April 30, 2026

Forecaster: Sam Lang

## Weather Headlines

- **Scattered storms expected tonight through FRI PM. A few strong to severe storms possible.**
- **Non-thunderstorm wind gusts up to 30 kts possible on Friday and Saturday.**
- **No fog concerns over the next 72 hours.**



**Current Radar: 2:57 PM CT**

As always, please do not hesitate to reach out to us with any forecast questions at [\(317\)-560-8122](tel:(317)560-8122). Press 1 for forecast questions.



You can also access real-time forecast updates and 24/7 meteorological chat assistance on your [Clarity](#) app.

# Houston Pilots Tropical Update



## Seasonal Hurricane Outlook

### 2026 Hurricane Season Outlook



Updated: 4/9/26

Forecaster: Waits



2026 Hurricane Season Forecast Stats			
Named Storms	Hurricanes	Major Hurricanes	ACE
9 - 13	3 - 6	1 - 3	BELOW NORMAL

Much Below Normal
Below Normal
Near Normal
Above Normal
Much Above Normal

Graphic to the left represents our favored seasonal outlook for the 2026 Hurricane Season. Conditions expected to be less favorable for tropical development within the Gulf this season.

No notable tropical development is expected over the next 7 days.

# Houston Pilots Visibility Chart (miles)



## Forecast Confidence



Visibility	Thu 4 pm	Thu 5 pm	Thu 6 pm	Thu 7 pm	Thu 8 pm	Thu 9 pm	Thu 10 pm	Thu 11 pm	Fri 12 am	Fri 1 am	Fri 2 am	Fri 3 am	Fri 4 am	Fri 5 am	Fri 6 am	Fri 7 am	Fri 8 am	Fri 9 am	Fri 10 am	Fri 11 am	Fri 12 pm	Fri 1 pm	Fri 2 pm	Fri 3 pm
Houston Pilots N - 610 Bridge	10	10	10	10	10	10	10	10	10	10	10	10	10	6.9	10	10	10	6.9	3.9	2.9	3.9	3.9	4.9	4.9
Houston Pilots M - Kinder 1	10	10	10	10	10	10	10	10	10	10	10	10	10	6.9	10	10	10	6.9	3.9	2.9	3.9	3.9	4.9	4.9
Houston Pilots L - Greens Bayou	10	10	10	10	10	10	10	10	10	10	10	10	10	6.9	10	10	9	5.9	3.9	2.9	3.9	3.9	4.9	4.9
Houston Pilots K - Shell Crude	10	10	10	10	10	10	10	10	10	10	10	10	10	6.9	10	10	9	5.9	3.9	2.9	3.9	3.9	4.9	4.9
Houston Pilots J - Lynchburg Ferries	10	10	10	10	10	10	10	10	10	10	10	10	10	6.9	10	10	9	5.9	3.9	2.9	3.9	3.9	4.9	4.9
Houston Pilots I - Exxon 3	10	10	10	10	10	10	10	10	10	10	10	10	10	6.9	10	10	9	5.9	3.9	2.9	3.9	3.9	4.9	4.9
Houston Pilots H - Morgans Point	10	10	10	10	10	10	10	10	10	10	10	10	10	6.9	10	10	9	5.9	3.9	2.9	3.9	3.9	4.9	4.9
Houston Pilots G - 75/76	10	10	10	10	10	9	7.9	7.9	6.9	6.9	5.9	5.9	6.9	6.9	6.9	7.9	6.9	4.9	3.9	2.9	3.9	2.9	3.9	9
Houston Pilots F - 63/64	10	10	10	10	10	9	7.9	7.9	6.9	6.9	5.9	5.9	6.9	6.9	6.9	7.9	6.9	4.9	3.9	3.9	3.9	2.9	3.9	9
Houston Pilots E - 51/52	9	9	10	10	10	7.9	7.9	6.9	6.9	6.9	4.9	5.9	6.9	6.9	6.9	7.9	6.9	4.9	3.9	3.9	3.9	2.9	3.9	9
Houston Pilots D - 37/38	9	9	10	10	10	7.9	6.9	6.9	6.9	6.9	4.9	5.9	6.9	6.9	6.9	7.9	6.9	4.9	3.9	3.9	3.9	2.9	3.9	9
Houston Pilots C - 25/26	9	9	10	10	10	7.9	7.9	6.9	6.9	5.9	4.9	5.9	6.9	6.9	6.9	7.9	6.9	4.9	3.9	3.9	3.9	2.9	3.9	9
Houston Pilots B - 11/12	9	9	10	10	9	6.9	6.9	6.9	6.9	5.9	4.9	5.9	6.9	6.9	6.9	7.9	6.9	3.9	3.9	3.9	3.9	2.9	3.9	9
Houston Pilots A - 1 & 2 Bravo	6.9	6.9	6.9	6.9	6.9	6.9	6.9	6.9	5.9	4.9	4.9	4.9	5.9	5.9	5.9	5.9	4.9	3.9	3.9	3.9	3.9	2.9	3.9	9

**NOTE: This is automated data that may/may not agree with the official B.A.M. thinking that's found on the daily slides or special visibility report slides. This data should be used as a guide only**

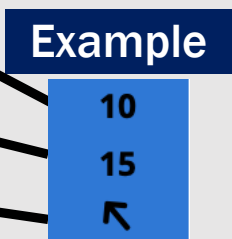
# Houston Pilots Wind Chart



## Forecast Confidence



Sustained Wind 10 Knots  
Gusts 15 Knots  
Wind from the SE



Wind	Thu 4 pm	Thu 5 pm	Thu 6 pm	Thu 7 pm	Thu 8 pm	Thu 9 pm	Thu 10 pm	Thu 11 pm	Fri 12 am	Fri 1 am	Fri 2 am	Fri 3 am	Fri 4 am	Fri 5 am	Fri 6 am	Fri 7 am	Fri 8 am	Fri 9 am	Fri 10 am	Fri 11 am	Fri 12 pm	Fri 1 pm	Fri 2 pm	Fri 3 pm	
Houston Pilots N - 610 Bridge	7 13 ↙	7 14 ↙	8 15 ↙	8 15 ↙	8 15 ↙	8 16 ↙	8 15 ↙	8 16 ↙	8 16 ↙	8 17 ↙	8 17 ↙	8 17 ↙	9 17 ↙	9 18 ↙	10 20 ↙	10 20 ↙	10 20 ↙	10 21 ↙	10 22 ↙	12 22 ↙	13 24 ↙	13 24 ↙	13 24 ↙	13 25 ↙	
Houston Pilots M - Kinder 1	7 12 ↙	7 13 ↙	8 15 ↙	8 15 ↙	8 15 ↙	8 16 ↙	8 15 ↙	8 16 ↙	8 16 ↙	8 17 ↙	8 17 ↙	8 17 ↙	9 17 ↙	9 18 ↙	10 20 ↙	10 20 ↙	10 20 ↙	10 21 ↙	10 21 ↙	12 22 ↙	13 24 ↙	13 24 ↙	13 24 ↙	13 25 ↙	
Houston Pilots L - Greens Bayou	7 12 ↙	7 13 ↙	8 15 ↙	8 15 ↙	8 15 ↙	8 15 ↙	8 15 ↙	8 16 ↙	8 16 ↙	8 17 ↙	8 17 ↙	8 17 ↙	9 17 ↙	9 18 ↙	9 20 ↙	10 20 ↙	10 20 ↙	10 21 ↙	10 21 ↙	12 22 ↙	13 23 ↙	13 23 ↙	13 24 ↙	13 24 ↙	
Houston Pilots K - Shell Crude	7 12 ↙	7 13 ↙	8 14 ↙	8 15 ↙	8 15 ↙	8 15 ↙	8 15 ↙	8 16 ↙	8 16 ↙	8 17 ↙	8 17 ↙	8 17 ↙	9 18 ↙	9 18 ↙	10 20 ↙	10 20 ↙	10 20 ↙	10 21 ↙	10 22 ↙	12 22 ↙	13 24 ↙	13 24 ↙	13 24 ↙	13 25 ↙	
Houston Pilots J - Lynchburg Ferries	6 12 ↙	7 13 ↙	8 15 ↙	8 15 ↙	8 15 ↙	8 15 ↙	8 15 ↙	8 16 ↙	8 16 ↙	8 16 ↙	8 17 ↙	8 17 ↙	8 17 ↙	9 18 ↙	9 20 ↙	10 20 ↙	10 20 ↙	10 21 ↙	10 21 ↙	12 22 ↙	13 23 ↙	13 23 ↙	13 24 ↙	13 25 ↙	
Houston Pilots I - Exxon 3	8 14 ↙	9 15 ↙	10 16 ↙	10 16 ↙	10 16 ↙	10 16 ↙	12 16 ↙	12 17 ↙	13 17 ↙	13 17 ↙	13 18 ↙	13 18 ↙	14 20 ↙	15 20 ↙	15 21 ↙	15 21 ↙	15 21 ↙	15 22 ↙	15 22 ↙	15 22 ↙	15 24 ↙	15 24 ↙	15 24 ↙	15 25 ↙	16 25 ↙
Houston Pilots H - Morgans Point	8 14 ↙	9 14 ↙	10 16 ↙	10 16 ↙	10 16 ↙	10 16 ↙	12 17 ↙	12 18 ↙	13 17 ↙	13 18 ↙	13 18 ↙	13 20 ↙	14 21 ↙	15 21 ↙	15 21 ↙	15 22 ↙	15 22 ↙	15 22 ↙	15 23 ↙	15 23 ↙	15 24 ↙	15 25 ↙	15 25 ↙	15 26 ↙	16 26 ↙
Houston Pilots G - 75/76	8 15 ↙	9 16 ↙	10 17 ↙	12 17 ↙	12 17 ↙	13 18 ↙	13 18 ↙	13 20 ↙	14 20 ↙	14 20 ↙	15 21 ↙	15 22 ↙	16 23 ↙	16 24 ↙	17 24 ↙	17 24 ↙	17 24 ↙	17 25 ↙	17 25 ↙	17 25 ↙	16 25 ↙	16 25 ↙	17 26 ↙	17 28 ↙	17 29 ↙
Houston Pilots F - 63/64	8 14 ↙	9 15 ↙	10 16 ↙	10 16 ↙	12 17 ↙	12 17 ↙	13 18 ↙	13 20 ↙	14 20 ↙	14 20 ↙	15 21 ↙	15 22 ↙	16 23 ↙	16 24 ↙	17 24 ↙	17 25 ↙	17 25 ↙	17 25 ↙	17 25 ↙	17 25 ↙	17 25 ↙	17 26 ↙	17 28 ↙	17 28 ↙	18 29 ↙
Houston Pilots E - 51/52	8 14 ↙	9 15 ↙	10 16 ↙	10 16 ↙	10 16 ↙	12 16 ↙	13 17 ↙	13 20 ↙	13 18 ↙	14 20 ↙	14 20 ↙	15 22 ↙	16 23 ↙	16 24 ↙	17 24 ↙	17 25 ↙	17 25 ↙	17 25 ↙	17 25 ↙	17 26 ↙	17 26 ↙	17 28 ↙	17 28 ↙	17 28 ↙	18 29 ↙
Houston Pilots D - 37/38	8 14 ↙	9 14 ↙	9 15 ↙	10 15 ↙	10 15 ↙	12 16 ↙	13 17 ↙	13 18 ↙	13 18 ↙	14 20 ↙	14 20 ↙	15 22 ↙	15 23 ↙	16 23 ↙	16 24 ↙	17 24 ↙	17 24 ↙	17 25 ↙	17 25 ↙	17 25 ↙	17 26 ↙	17 26 ↙	18 28 ↙	18 28 ↙	18 29 ↙
Houston Pilots C - 25/26	8 13 ↙	9 14 ↙	9 14 ↙	10 15 ↙	10 15 ↙	10 16 ↙	12 16 ↙	13 18 ↙	13 17 ↙	13 18 ↙	13 18 ↙	14 21 ↙	15 22 ↙	15 22 ↙	16 23 ↙	16 23 ↙	16 23 ↙	16 24 ↙	17 25 ↙	17 25 ↙	17 25 ↙	17 26 ↙	17 26 ↙	18 28 ↙	18 29 ↙
Houston Pilots B - 11/12	8 12 ↙	9 13 ↙	9 14 ↙	10 15 ↙	10 15 ↙	10 15 ↙	10 16 ↙	10 16 ↙	10 17 ↙	12 17 ↙	12 17 ↙	13 20 ↙	13 20 ↙	14 21 ↙	15 21 ↙	15 22 ↙	15 22 ↙	15 23 ↙	15 23 ↙	16 24 ↙	16 24 ↙	17 26 ↙	17 26 ↙	17 26 ↙	18 28 ↙
Houston Pilots A - 1 & 2 Bravo	7 12 ↙	8 13 ↙	8 14 ↙	9 15 ↙	10 15 ↙	10 16 ↙	12 17 ↙	13 18 ↙	13 18 ↙	13 18 ↙	14 20 ↙	15 21 ↙	15 22 ↙	16 23 ↙	16 23 ↙	16 23 ↙	16 23 ↙	16 24 ↙	17 25 ↙	17 25 ↙	17 25 ↙	18 26 ↙	18 26 ↙	18 26 ↙	18 28 ↙

**NOTE: This is automated data that may/may not agree with the official BAM thinking that's found on the daily slides. This data should be used as a guide only.**

# Houston Pilots: THU. 04/30/2026

## Forecast Discussion

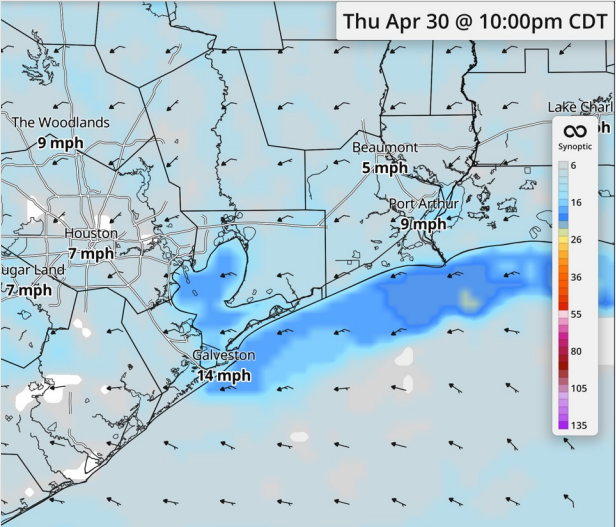
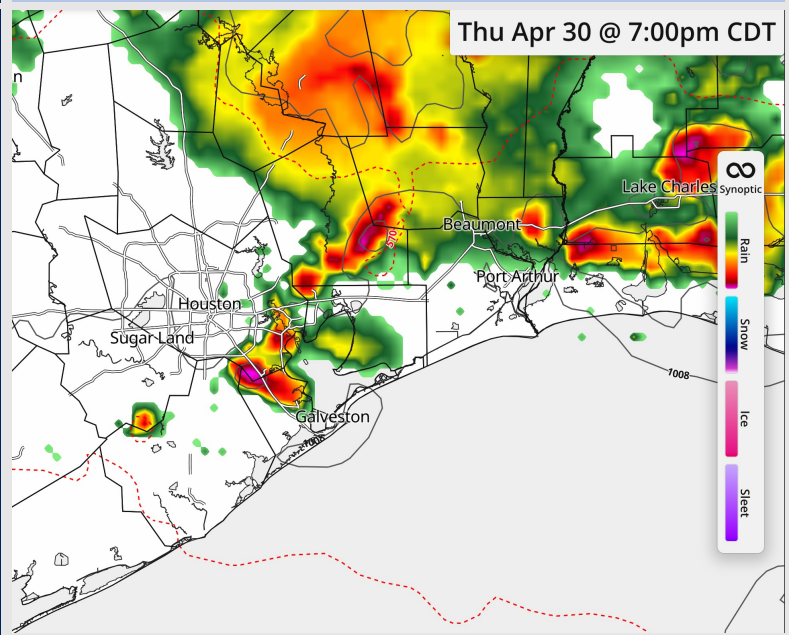
**Precip:** Favoring scattered storms after 6PM. A few instances of 35kt wind gusts, small hail, and lightning can't be ruled out.

**Wind:** Winds will be out of the SE until 8PM, blowing from the NE thereafter. **N of Morgan's Point:** Winds of 7 - 12 kts. **S of Morgan's Point:** Winds of 10 - 15 kts.

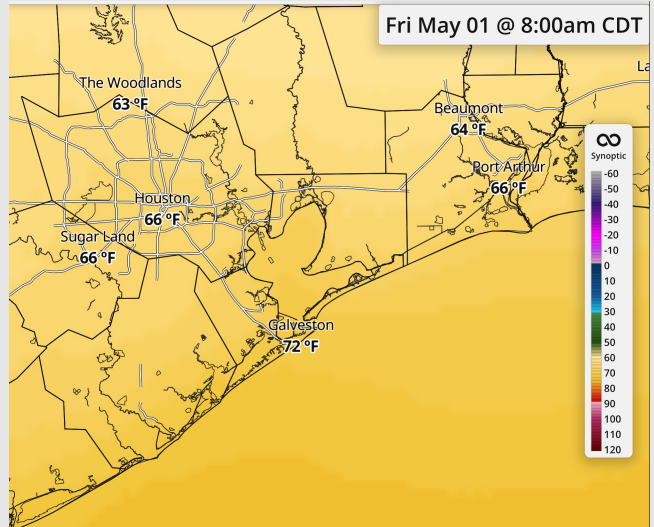
**Low Temps:** **N of Morgan's Point:** High 60s F. **S of Morgan's Point:** Low 70s F.

**Visibility:** No visibility concerns today.

## Precip Image: 7 PM CT



**Wind Speed:  
5 PM CT**



**Low Temps  
FRI AM**

# Houston Pilots: FRI. 05/01/2026

## Forecast Discussion

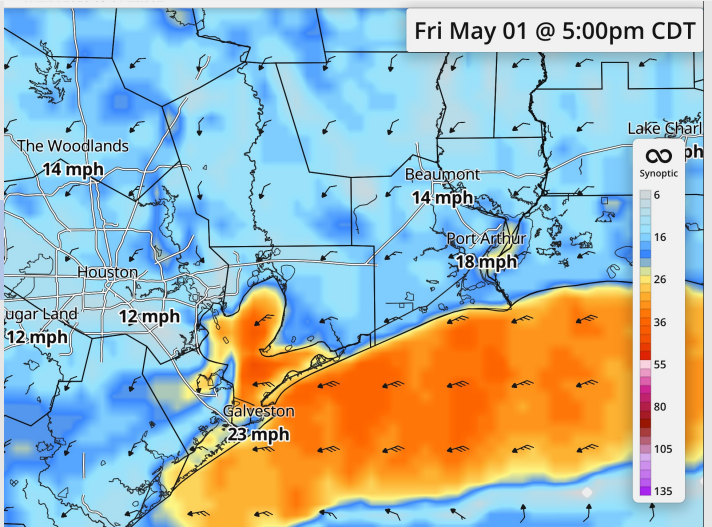
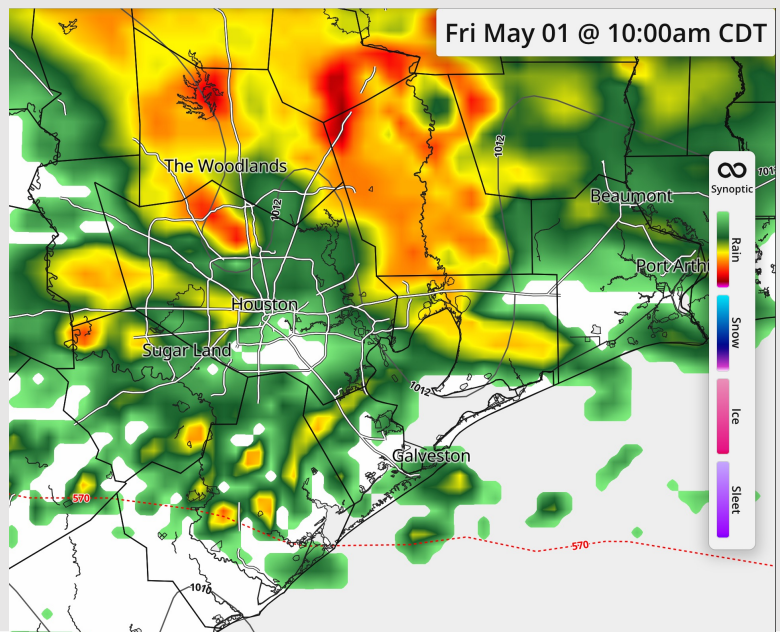
**Precip:** Scattered storms expected, becoming more widespread after 6 AM. Storms move out by 11 PM. **Lightning, gusts near 50 kts, and hail will be risks with storms.**

**Wind:** Winds out of the SE/ESE through 8 PM before turning to blow from the NE thereafter. **N of Morgan's Point:** Winds of 5 – 10 kts, increasing to 11 – 17 kts after 10 AM. **S of Morgan's Point:** Winds of 12 – 19 kts, increasing to 17 – 25 kts after 10 AM. **Non thunderstorm gusts near 25 – 30 kts possible after 5 AM.**

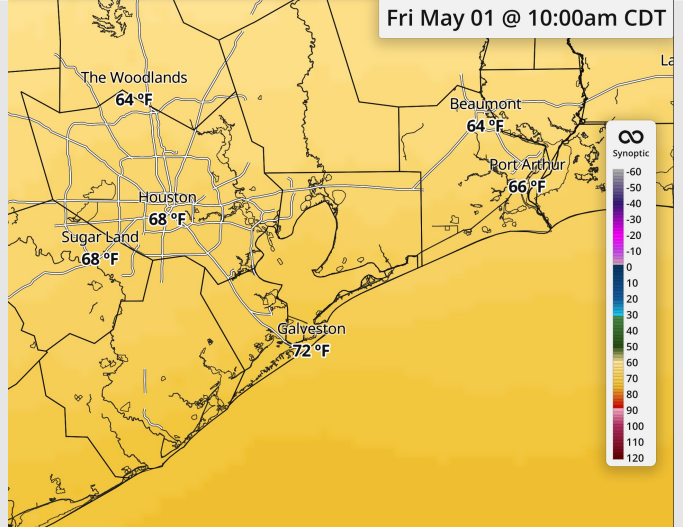
**High Temps:** **N of Morgan's Point:** Upper 60s F. **S of Morgan's Point:** Low 70s F.

**Visibility:** No fog concerns Friday, but visibilities can be reduced under heavy downpours.

## Precip Image: 10 AM CT



**Wind Speed:  
5 PM CT**



**High Temps  
Friday**

# Houston Pilots: SAT. 05/02/2026

## Forecast Discussion

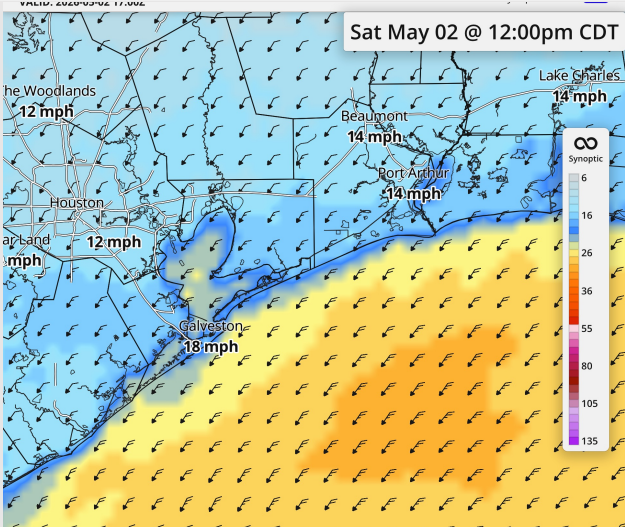
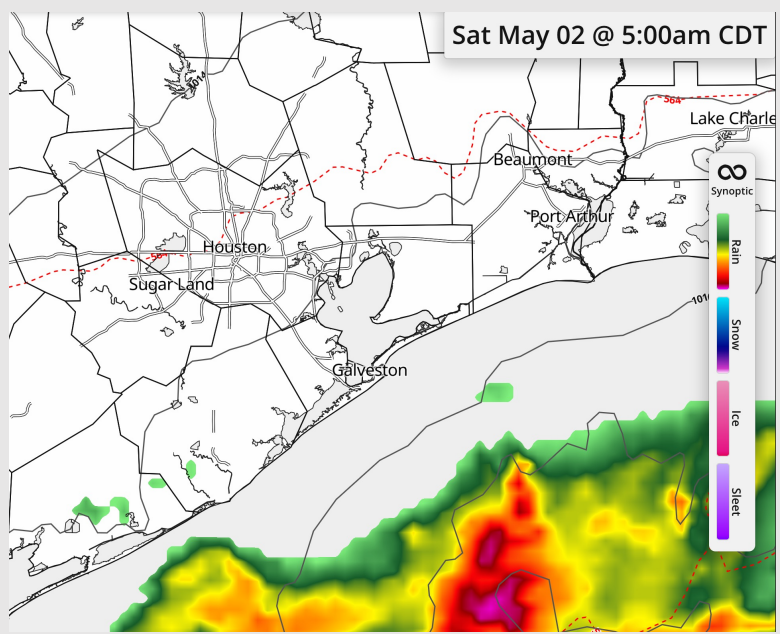
**Precip:** Favoring dry conditions Saturday. Storms expected to stay south of all Stations.

**Wind:** Winds out of the NE for the entire day. **N of Morgan's Point:** Winds of 7 - 12 kts. **S of Morgan's Point:** Winds of 14 - 19 kts. **Gusts near 25 kts possible through the entire day.**

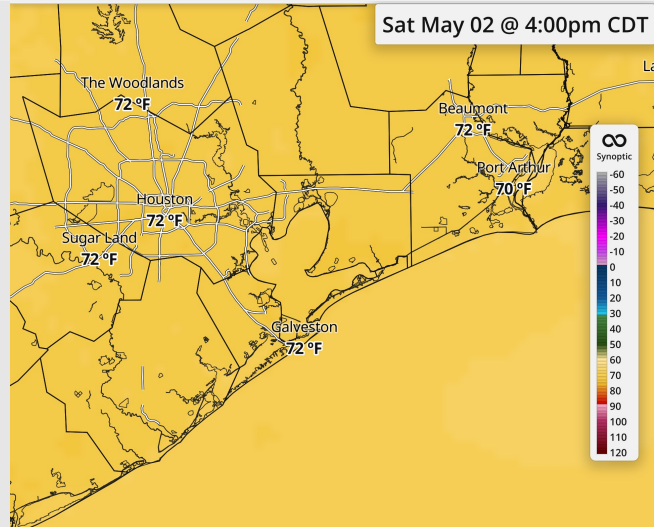
**High Temps:** **N of Morgan's Point:** Low 70s F. **S of Morgan's Point:** Low 70s F.

**Visibility:** No visibility concerns Saturday.

## Precip Image: 5 AM CT

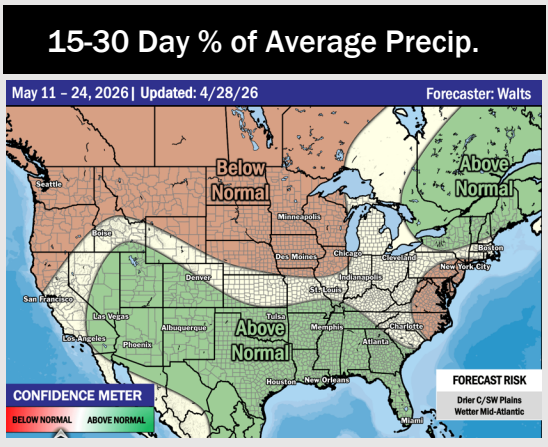
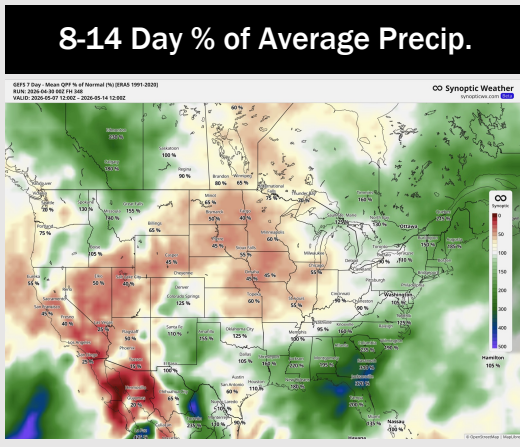
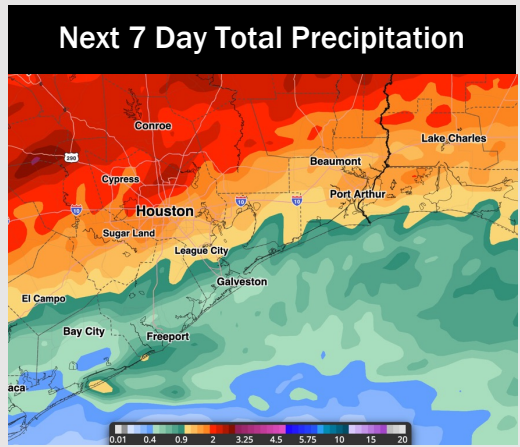
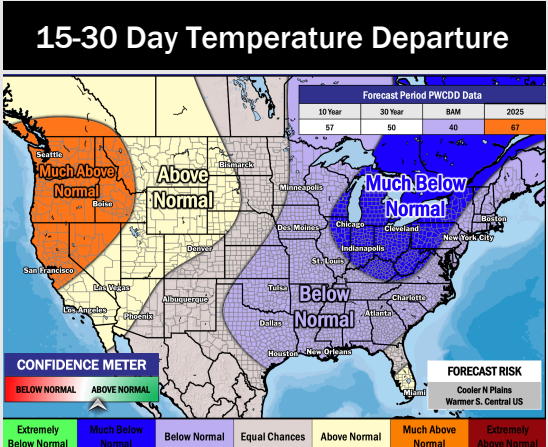
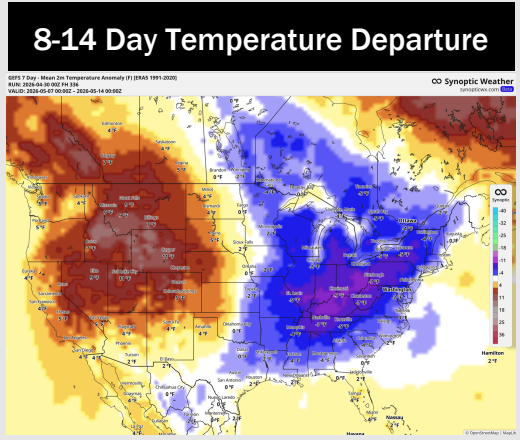
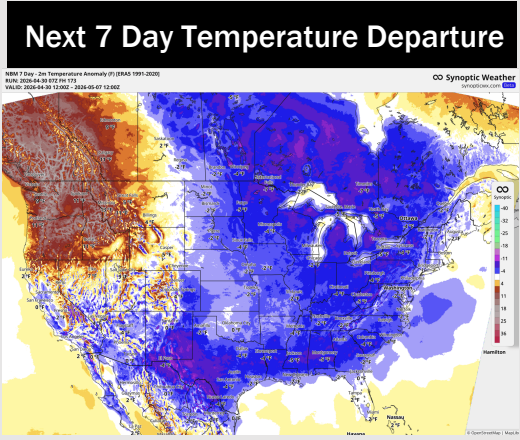


**Wind Speed:**  
12 PM CT



**High Temps**  
Saturday

# Houston Pilots: 04/30/2026



- Below normal temps are favored over the next 7 days with moderate rain under thunderstorms.
- Below normal temperatures and near normal / slightly above normal rain chances in the Week 2 period.
- Below normal temperatures and above normal rainfall expected through the the third week of May.