

Houston Pilots Forecast Package

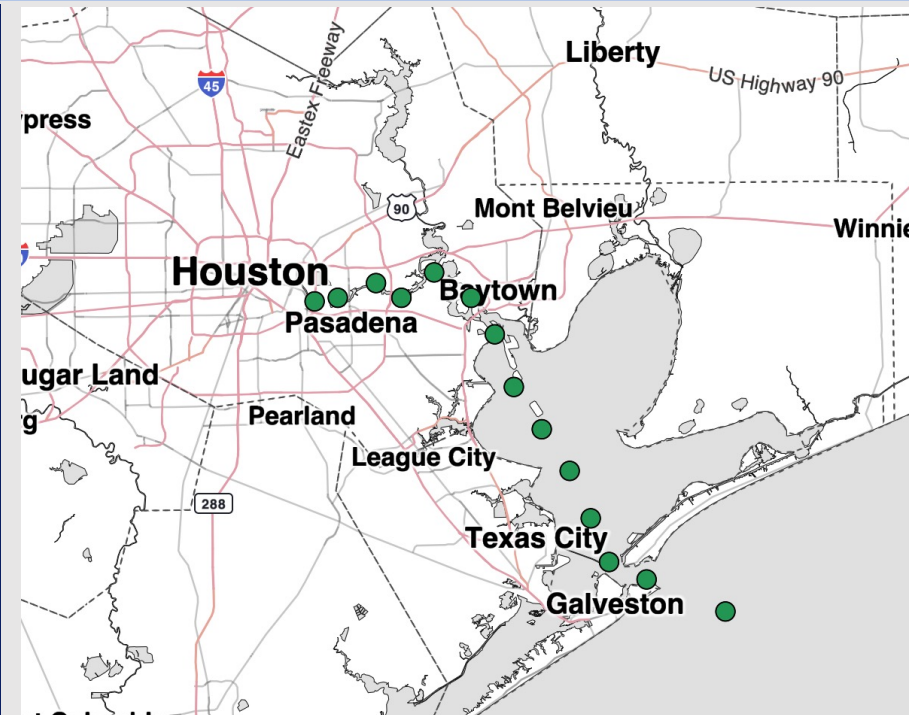


Updated: 1:47 PM CT
Monday, April 27, 2026

Forecaster: Alexis Ratkay

Weather Headlines

- **Storms on Tuesday morning and Wednesday evening can become strong in nature, with risks for 35 kt wind gusts, hail and lightning.**
- **Non-thunderstorm wind gusts up to 25 kts possible this evening, Tuesday, and Wednesday.**
- **Misty/hazy conditions possible Tuesday morning.**



Current Radar: 1:47 PM CT

As always, please do not hesitate to reach out to us with any forecast questions at [\(317\)-560-8122](tel:317-560-8122). **Press 1 for forecast questions.**



You can also access real-time forecast updates and 24/7 meteorological chat assistance on your [Clarity](#) app.

Houston Pilots Tropical Update



Seasonal Hurricane Outlook

2026 Hurricane Season Outlook



Updated: 4/9/26

Forecaster: Waits



2026 Hurricane Season Forecast Stats			
Named Storms	Hurricanes	Major Hurricanes	ACE
9 - 13	3 - 6	1 - 3	BELOW NORMAL

Much Below Normal
Below Normal
Near Normal
Above Normal
Much Above Normal

Graphic to the left represents our favored seasonal outlook for the 2026 Hurricane Season. Conditions expected to be less favorable for tropical development within the Gulf this season.

No notable tropical development is expected over the next 7 days.

Houston Pilots Visibility Chart (miles)



Forecast Confidence



Visibility	Mon 3 pm	Mon 4 pm	Mon 5 pm	Mon 6 pm	Mon 7 pm	Mon 8 pm	Mon 9 pm	Mon 10 pm	Mon 11 pm	Tue 12 am	Tue 1 am	Tue 2 am	Tue 3 am	Tue 4 am	Tue 5 am	Tue 6 am	Tue 7 am	Tue 8 am	Tue 9 am	Tue 10 am	Tue 11 am	Tue 12 pm	Tue 1 pm	Tue 2 pm
Houston Pilots N - 610 Bridge	6.9	5.9	6.9	6.9	5.9	5.9	5.9	6.9	6.9	5.9	5.9	5.9	5.9	4.9	4.9	4.9	4.9	3.9	3.9	3.9	3.9	4.9	4.9	5.9
Houston Pilots M - Kinder 1	6.9	6.9	6.9	6.9	5.9	5.9	5.9	6.9	6.9	5.9	5.9	5.9	5.9	4.9	4.9	4.9	4.9	3.9	3.9	3.9	3.9	4.9	4.9	5.9
Houston Pilots L - Greens Bayou	6.9	6.9	7.9	6.9	6.9	6.9	6.9	6.9	6.9	6.9	6.9	5.9	5.9	4.9	4.9	4.9	4.9	3.9	3.9	3.9	3.9	4.9	5.9	6.9
Houston Pilots K - Shell Crude	6.9	6.9	6.9	6.9	6.9	6.9	6.9	6.9	6.9	6.9	6.9	5.9	5.9	4.9	4.9	4.9	4.9	3.9	3.9	3.9	3.9	4.9	5.9	6.9
Houston Pilots J - Lynchburg Ferries	6.9	6.9	7.9	6.9	6.9	6.9	6.9	7.9	6.9	6.9	6.9	5.9	5.9	4.9	4.9	4.9	4.9	3.9	3.9	3.9	4.9	4.9	5.9	6.9
Houston Pilots I - Exxon 3	6.9	6.9	6.9	6.9	6.9	6.9	6.9	6.9	6.9	6.9	6.9	4.9	5.9	4.9	4.9	4.9	4.9	3.9	3.9	3.9	4.9	4.9	5.9	6.9
Houston Pilots H - Morgans Point	6.9	6.9	6.9	6.9	6.9	6.9	6.9	6.9	6.9	6.9	6.9	4.9	4.9	4.9	4.9	4.9	4.9	3.9	3.9	3.9	3.9	4.9	5.9	6.9
Houston Pilots G - 75/76	6.9	6.9	6.9	6.9	6.9	5.9	5.9	6.9	6.9	5.9	3.9	1.6	2	2.9	3.9	3.9	3.9	3.9	2.9	3.9	3.9	4.9	9	9
Houston Pilots F - 63/64	6.9	6.9	6.9	6.9	5.9	5.9	5.9	6.9	6.9	4.9	1.6	1.6	0.7	1.1	2.9	2.9	2.9	2.5	1.6	2.9	3.9	4.9	9	9
Houston Pilots E - 51/52	6.9	5.9	5.9	5.9	5.9	4.9	4.9	5.9	5.9	2.5	0.7	1.6	1.6	0.8	1.6	2	1.6	1.1	0.8	1.6	3	3.9	9	9
Houston Pilots D - 37/38	6.9	5.9	5.9	5.9	4.9	4.9	4.9	5.9	5.9	2.5	0.5	1.6	1.6	0.8	2	2	1.6	1.1	0.8	1.6	3	3.9	9	9
Houston Pilots C - 25/26	5.9	5.9	5.9	5.9	4.9	4.9	4.9	5.9	5.9	2.5	1.6	1.6	1.6	0.8	1.6	2	1.6	1.1	0.8	1.6	3	3.9	9	9
Houston Pilots B - 11/12	5.9	5.9	4.9	5.9	4.9	4.9	4.9	5.9	5.9	2	1.6	1.1	1.6	0.8	1.6	2	1.6	1.1	0.8	1.6	3	3.9	9	9
Houston Pilots A - 1 & 2 Bravo	5.9	4.9	4.9	4.9	4.9	4.9	4.9	4.9	3.9	1.6	1.1	1.1	1.6	0.8	1.6	2	1.6	0.8	0.8	1.6	3	3.9	9	9

NOTE: This is automated data that may/may not agree with the official B.A.M. thinking that's found on the daily slides or special visibility report slides. This data should be used as a guide only

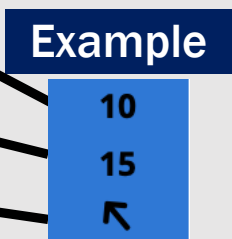
Houston Pilots Wind Chart



Forecast Confidence



Sustained Wind 10 Knots
Gusts 15 Knots
Wind from the SE



Wind	Mon 3 pm	Mon 4 pm	Mon 5 pm	Mon 6 pm	Mon 7 pm	Mon 8 pm	Mon 9 pm	Mon 10 pm	Mon 11 pm	Tue 12 am	Tue 1 am	Tue 2 am	Tue 3 am	Tue 4 am	Tue 5 am	Tue 6 am	Tue 7 am	Tue 8 am	Tue 9 am	Tue 10 am	Tue 11 am	Tue 12 pm	Tue 1 pm	Tue 2 pm
Houston Pilots N - 610 Bridge	12 ↑	13 ↑	13 ↑	13 ↑	13 ↑	12 ↑	10 ↑	10 ↑	10 ↑	9 ↑	8 ↑	8 ↑	8 ↑	8 ↑	8 ↑	8 ↑	7 ↑	7 ↑	8 ↑	8 ↑	10 ↑	12 ↑	13 ↑	13 ↑
Houston Pilots M - Kinder 1	12 ↑	13 ↑	13 ↑	13 ↑	13 ↑	12 ↑	10 ↑	10 ↑	9 ↑	9 ↑	8 ↑	8 ↑	8 ↑	8 ↑	8 ↑	8 ↑	7 ↑	7 ↑	8 ↑	8 ↑	10 ↑	12 ↑	13 ↑	13 ↑
Houston Pilots L - Greens Bayou	13 ↑	13 ↑	13 ↑	13 ↑	13 ↑	12 ↑	10 ↑	10 ↑	9 ↑	9 ↑	8 ↑	8 ↑	8 ↑	8 ↑	8 ↑	8 ↑	7 ↑	7 ↑	8 ↑	8 ↑	10 ↑	12 ↑	13 ↑	13 ↑
Houston Pilots K - Shell Crude	13 ↑	13 ↑	13 ↑	13 ↑	13 ↑	12 ↑	10 ↑	10 ↑	9 ↑	9 ↑	8 ↑	8 ↑	8 ↑	8 ↑	8 ↑	8 ↑	7 ↑	7 ↑	8 ↑	8 ↑	10 ↑	12 ↑	13 ↑	13 ↑
Houston Pilots J - Lynchburg Ferries	13 ↑	13 ↑	13 ↑	13 ↑	13 ↑	12 ↑	10 ↑	10 ↑	9 ↑	9 ↑	8 ↑	8 ↑	8 ↑	8 ↑	8 ↑	7 ↑	7 ↑	7 ↑	8 ↑	8 ↑	10 ↑	12 ↑	13 ↑	13 ↑
Houston Pilots I - Exxon 3	15 ↑	15 ↑	16 ↑	16 ↑	15 ↑	15 ↑	15 ↑	14 ↑	14 ↑	13 ↑	13 ↑	13 ↑	13 ↑	12 ↑	12 ↑	12 ↑	10 ↑	10 ↑	12 ↑	12 ↑	13 ↑	13 ↑	15 ↑	15 ↑
Houston Pilots H - Morgans Point	15 ↑	15 ↑	15 ↑	15 ↑	15 ↑	15 ↑	14 ↑	14 ↑	14 ↑	13 ↑	13 ↑	13 ↑	13 ↑	12 ↑	12 ↑	12 ↑	10 ↑	10 ↑	10 ↑	12 ↑	13 ↑	13 ↑	14 ↑	15 ↑
Houston Pilots G - 75/76	15 ↑	16 ↑	16 ↑	16 ↑	16 ↑	15 ↑	15 ↑	15 ↑	15 ↑	14 ↑	14 ↑	14 ↑	14 ↑	13 ↑	13 ↑	13 ↑	13 ↑	13 ↑	13 ↑	13 ↑	13 ↑	14 ↑	15 ↑	15 ↑
Houston Pilots F - 63/64	15 ↑	15 ↑	15 ↑	15 ↑	15 ↑	15 ↑	15 ↑	15 ↑	15 ↑	14 ↑	14 ↑	14 ↑	13 ↑	13 ↑	13 ↑	13 ↑	13 ↑	13 ↑	13 ↑	13 ↑	13 ↑	14 ↑	15 ↑	15 ↑
Houston Pilots E - 51/52	15 ↑	15 ↑	15 ↑	15 ↑	15 ↑	14 ↑	14 ↑	14 ↑	14 ↑	14 ↑	14 ↑	14 ↑	14 ↑	13 ↑	13 ↑	13 ↑	13 ↑	13 ↑	13 ↑	13 ↑	13 ↑	14 ↑	15 ↑	15 ↑
Houston Pilots D - 37/38	15 ↑	15 ↑	14 ↑	14 ↑	14 ↑	14 ↑	14 ↑	14 ↑	14 ↑	14 ↑	14 ↑	14 ↑	13 ↑	13 ↑	13 ↑	13 ↑	13 ↑	13 ↑	13 ↑	13 ↑	13 ↑	14 ↑	15 ↑	15 ↑
Houston Pilots C - 25/26	15 ↑	14 ↑	14 ↑	14 ↑	13 ↑	13 ↑	13 ↑	13 ↑	13 ↑	13 ↑	13 ↑	13 ↑	13 ↑	13 ↑	13 ↑	13 ↑	13 ↑	13 ↑	13 ↑	13 ↑	13 ↑	14 ↑	14 ↑	15 ↑
Houston Pilots B - 11/12	14 ↑	13 ↑	13 ↑	13 ↑	13 ↑	12 ↑	12 ↑	13 ↑	13 ↑	13 ↑	13 ↑	12 ↑	12 ↑	12 ↑	12 ↑	12 ↑	12 ↑	12 ↑	12 ↑	12 ↑	13 ↑	13 ↑	14 ↑	14 ↑
Houston Pilots A - 1 & 2 Bravo	13 ↑	13 ↑	13 ↑	13 ↑	13 ↑	13 ↑	13 ↑	14 ↑	14 ↑	14 ↑	14 ↑	14 ↑	14 ↑	14 ↑	14 ↑	14 ↑	14 ↑	14 ↑	14 ↑	14 ↑	13 ↑	13 ↑	13 ↑	13 ↑

NOTE: This is automated data that may/may not agree with the official BAM thinking that's found on the daily slides. This data should be used as a guide only.

Houston Pilots: MON. 04/27/2026



Forecast Discussion

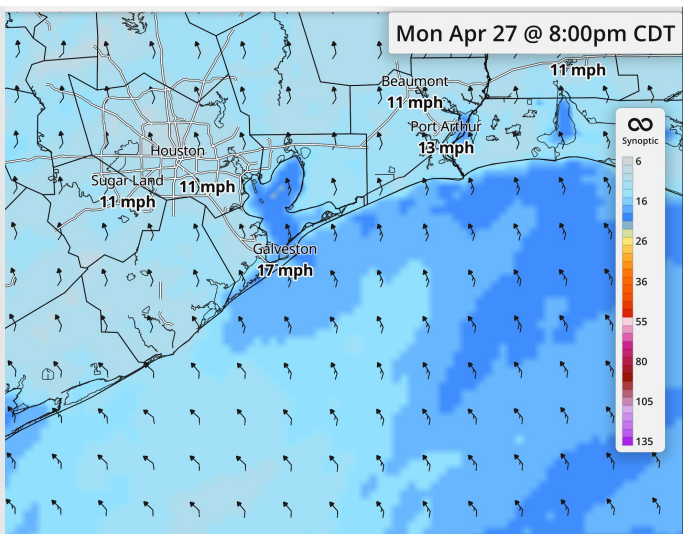
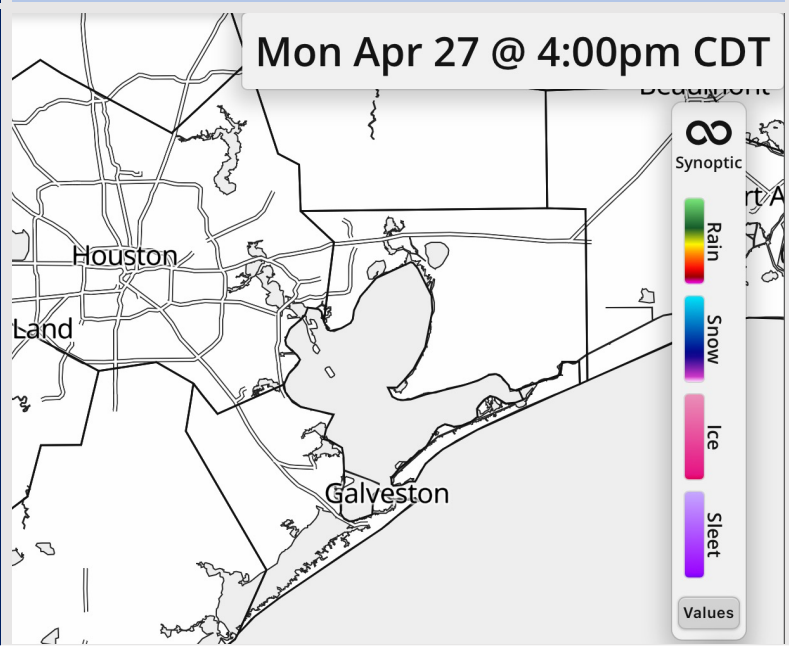
Precip: Dry conditions favored for today

Wind: Winds out of the SSE. **N of Morgan's Point:** Winds at 5 - 10 kts throughout the day. **S of Morgan's Point:** Winds of 10 - 19 kts throughout the remainder of the evening. **Gusts up to 25 kts possible through midnight.**

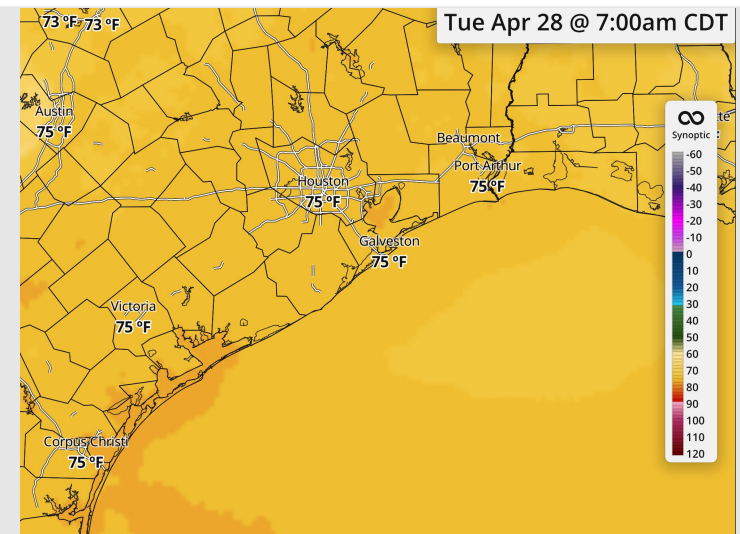
Low Temps: **N of Morgan's Point:** Mid 70s F. **S of Morgan's Point:** Mid 70s F.

Visibility: Misty/hazy conditions from 12 AM - 9 AM can reduce visibilities to 3-4 miles.

Precip Image: 4 PM CT



**Wind Speed:
8 PM CT**



**Low Temps
TUE AM**

Houston Pilots: TUE. 04/28/2026



Forecast Discussion

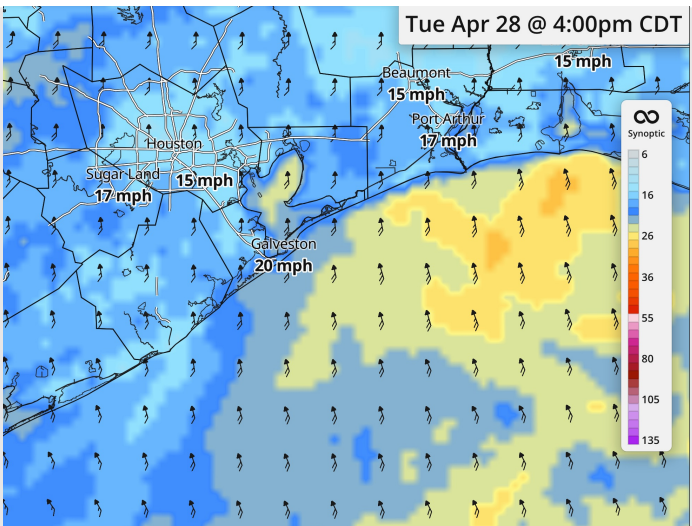
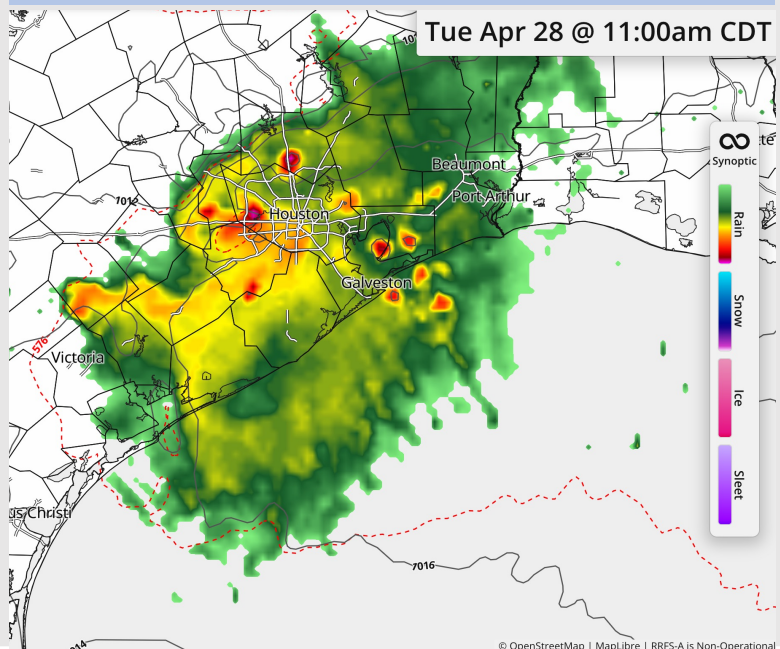
Precip: Scattered showers and storms possible from 8AM – 12PM. **Lightning, gusts of 35 kts and hail will be risks with storms.**

Wind: Winds mostly out of the SSE through the day. **N of Morgan's Point:** Winds of 7 – 13 kts. **S of Morgan's Point:** Winds of 10 – 19 kts. **Gusts up to 25 kts in play S of Morgan's Point after 2 PM.**

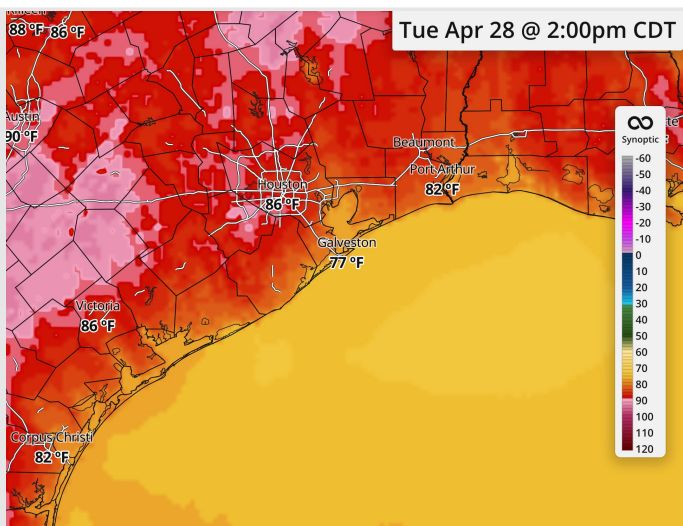
High Temps: **N of Morgan's Point:** Upper 80s F. **S of Morgan's Point:** Low 80s F.

Visibility: No visibility concerns expected.

Precip Image: 11 AM CT



**Wind Speed:
4 PM CT**



**High Temps
Tuesday**

Houston Pilots: WED. 04/29/2026

Forecast Discussion

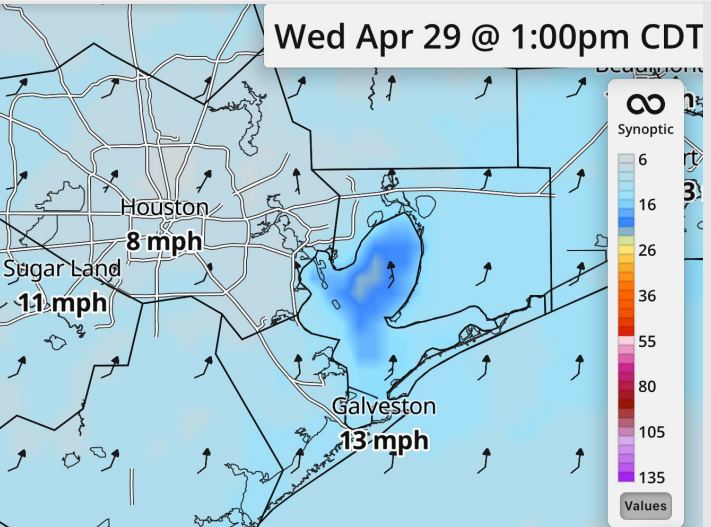
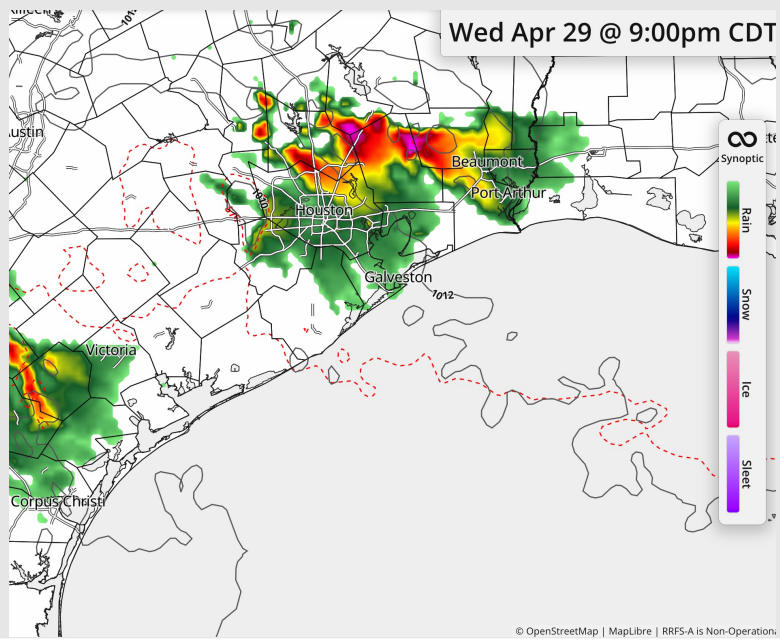
Precip: Scattered showers and storms in play after 7 PM. **Lightning, gusts of 35 kts and hail will be risks with storms.**

Wind: Winds out of the SSE. **N of Morgan's Point:** Winds of 2 – 7 kts. **S of Morgan's Point:** Winds of 9 – 14 kts. **Non-thunderstorm gusts of 20-25 kts in play through 4 AM for Stations S of Morgan's Point.**

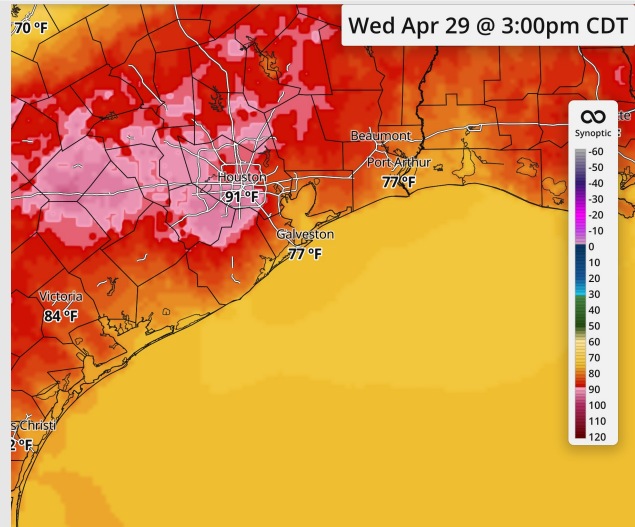
High Temps: **N of Morgan's Point:** Upper 80s / Low 90s F. **S of Morgan's Point:** Low 80s F.

Visibility: No fog concerns Wednesday, but visibilities can be reduced under heavy downpours.

Precip Image: 9 PM CT



Wind Speed:
1 PM CT

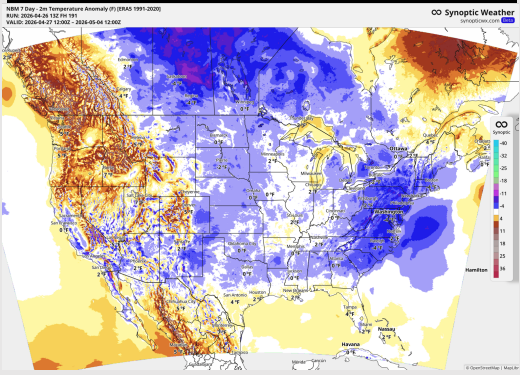


High Temps
Wednesday

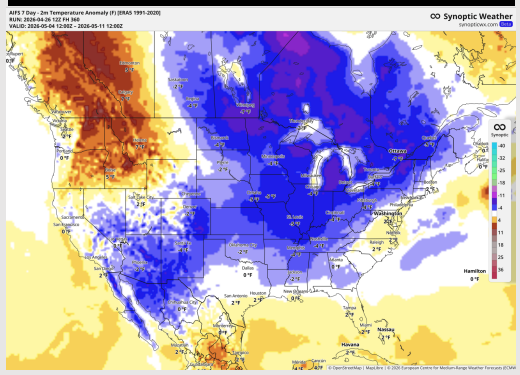
Houston Pilots: 04/27/2026



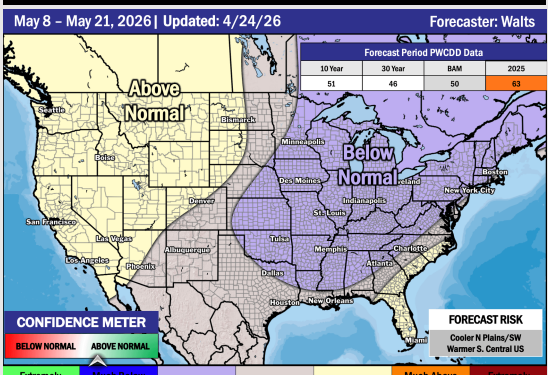
Next 7 Day Temperature Departure



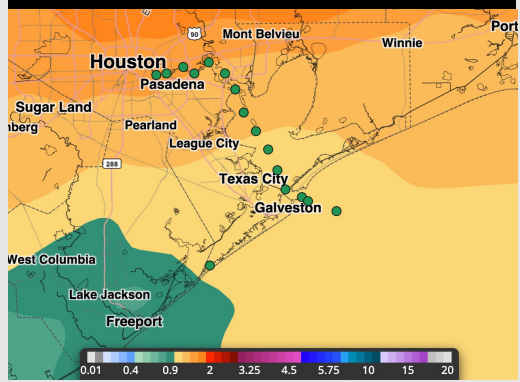
8-14 Day Temperature Departure



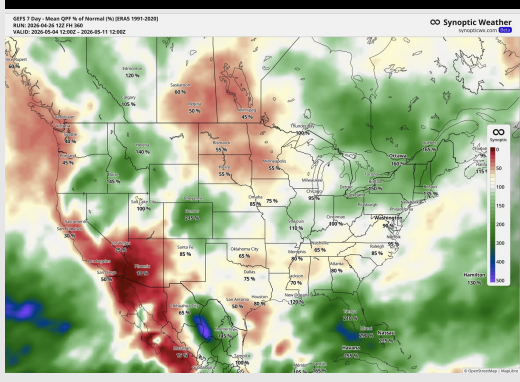
15-30 Day Temperature Departure



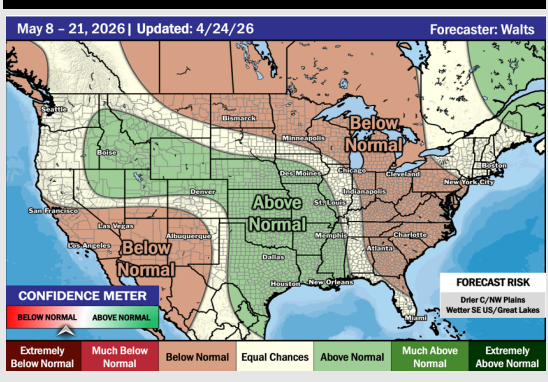
Next 7 Day Total Precipitation



8-14 Day % of Average Precip.



15-30 Day % of Average Precip.



- Above normal temps are favored over the next 7 days, with better rain chances the second half of the week.
- Near to above normal temperatures and below normal rain chances in the Week 2 period.
- Near normal temperatures and above normal rainfall expected through the the third week of May.