

# Houston Pilots Forecast Package

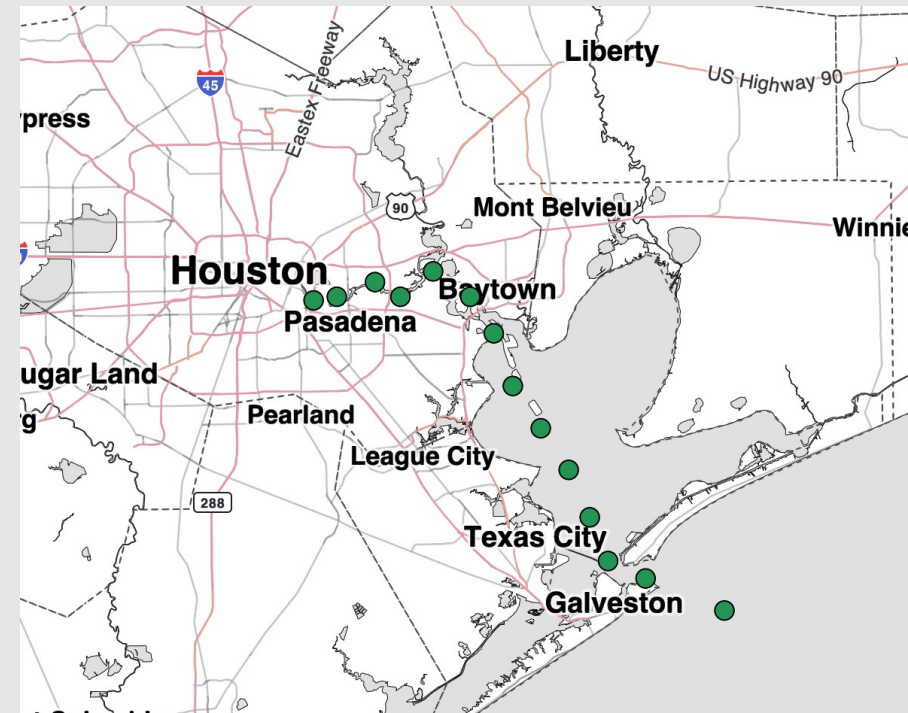


Updated: 10:10 PM CT  
Sunday, April 26, 2026

Forecaster: Tyler Riggles

## Weather Headlines

- **Storms on Tuesday and Wednesday can become strong in nature, with risks for 35 kt wind gusts, hail and lightning.**
- **Non-thunderstorm wind gusts up to 25 kts possible this Tuesday and Wednesday.**
- **Misty/hazy conditions possible this morning.**



**Current Radar: 10:02 PM CT**

As always, please do not hesitate to reach out to us with any forecast questions at [\(317\)-560-8122](tel:317-560-8122). **Press 1 for forecast questions.**



**You can also access real-time forecast updates and 24/7 meteorological chat assistance on your [Clarity](#) app.**

# Houston Pilots Tropical Update



## Seasonal Hurricane Outlook

### 2026 Hurricane Season Outlook



Updated: 4/9/26

Forecaster: Waits



2026 Hurricane Season Forecast Stats			
Named Storms	Hurricanes	Major Hurricanes	ACE
9 - 13	3 - 6	1 - 3	BELOW NORMAL

Much Below Normal
Below Normal
Near Normal
Above Normal
Much Above Normal

Graphic to the left represents our favored seasonal outlook for the 2026 Hurricane Season. Conditions expected to be less favorable for tropical development within the Gulf this season.

No notable tropical development is expected over the next 7 days.

# Houston Pilots Visibility Chart (miles)



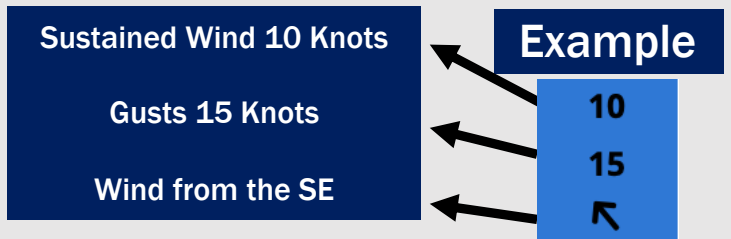
## Forecast Confidence



Visibility	Sun 11 pm	Mon 12 am	Mon 1 am	Mon 2 am	Mon 3 am	Mon 4 am	Mon 5 am	Mon 6 am	Mon 7 am	Mon 8 am	Mon 9 am	Mon 10 am	Mon 11 am	Mon 12 pm	Mon 1 pm	Mon 2 pm	Mon 3 pm	Mon 4 pm	Mon 5 pm	Mon 6 pm	Mon 7 pm	Mon 8 pm	Mon 9 pm	Mon 10 pm
Houston Pilots N - 610 Bridge	10	10	9	6.9	3.9	5.9	4.9	5.9	6.9	6.9	4.9	6.9	10	10	10	10	10	10	10	10	10	9	8	9
Houston Pilots M - Kinder 1	10	10	9	6.9	4.9	5.9	4.9	5.9	6.9	6.9	4.9	6.9	10	10	10	10	10	10	10	10	10	9	6.9	9
Houston Pilots L - Greens Bayou	10	10	9	6.9	3.9	5.9	4.9	5.9	6.9	5.9	4.9	6.9	9	10	10	10	10	10	10	10	10	9	6.9	9
Houston Pilots K - Shell Crude	10	10	9	6.9	4.9	5.9	4.9	5.9	6.9	5.9	4.9	6.9	9	10	10	10	10	10	10	10	10	7.9	6.9	9
Houston Pilots J - Lynchburg Ferries	10	10	6.9	5.9	2.9	5.9	4.9	5.9	5.9	5.9	4.9	6.9	9	10	10	10	10	10	10	10	10	7.9	6.9	9
Houston Pilots I - Exxon 3	10	10	9	0.7	2.9	5.9	4.9	4.9	5.9	2	4.9	6.9	7.9	10	10	10	10	10	10	10	10	7.9	6.9	9
Houston Pilots H - Morgans Point	7.9	2.5	6.9	0.5	5.9	5.9	4.9	4.9	5.9	2	4.9	4.9	6.9	7.9	10	10	10	10	10	9	7.9	6.9	6.9	6.9
Houston Pilots G - 75/76	6.9	2	2.5	0.7	6.9	4.9	4.9	3.9	4.9	1.1	1.1	2.5	4.9	6.9	7.9	6.9	6.9	4.9	4.9	4.9	3.9	3.9	8	9
Houston Pilots F - 63/64	4.9	2	0.7	0.7	5.9	4.9	4.9	3.9	4.9	0.5	0.5	2.5	4.9	6.9	6.9	6.9	6.9	3.9	3.9	3.9	3.9	3.9	8	9
Houston Pilots E - 51/52	4.9	2	0.5	3	5.9	3.9	4.9	3.9	2.9	0.5	0.5	2.5	3.9	4.9	3.9	5.9	4.9	3.9	3.9	3	3	3	8	9
Houston Pilots D - 37/38	3.9	1.6	0.5	3.9	5.9	3.9	4.9	3.9	2.9	0.5	0.5	2.5	2.9	3	3.9	3.9	3.9	3	3	3	3	3	8	9
Houston Pilots C - 25/26	1.6	1.1	0.5	4.9	4.9	3.9	4.9	3.9	2.5	0.5	0.5	2.5	2	2.5	2.5	3	3.9	3	3	2.5	2.5	2.5	8	9
Houston Pilots B - 11/12	1.6	1.1	0.5	4.9	4.9	3.9	4.9	2.9	2	0.5	0.5	1.6	2	2	2.5	3	3	2.5	2.5	2.5	2.5	2.5	8	9
Houston Pilots A - 1 & 2 Bravo	0.8	0.7	0.5	4.9	4.9	3.9	2.9	2.5	1.6	0.5	0.3	1.1	2	2	2.5	3	3	2.5	2.5	2.5	2.5	2.5	8	9

**NOTE: This is automated data that may/may not agree with the official B.A.M. thinking that's found on the daily slides or special visibility report slides. This data should be used as a guide only**

# Houston Pilots Wind Chart



Wind	Sun 11 pm	Mon 12 am	Mon 1 am	Mon 2 am	Mon 3 am	Mon 4 am	Mon 5 am	Mon 6 am	Mon 7 am	Mon 8 am	Mon 9 am	Mon 10 am	Mon 11 am	Mon 12 pm	Mon 1 pm	Mon 2 pm	Mon 3 pm	Mon 4 pm	Mon 5 pm	Mon 6 pm	Mon 7 pm	Mon 8 pm	Mon 9 pm	Mon 10 pm	
Houston Pilots N - 610 Bridge	10 ↑	9 ↑	9 ↑	8 ↑	8 ↑	8 ↑	8 ↑	8 ↑	8 ↑	8 ↑	8 ↑	8 ↑	10 ↑	10 ↑	12 ↑	12 ↑	12 ↑	13 ↑	13 ↑	13 ↑	13 ↑	12 ↑	10 ↑	10 ↑	
Houston Pilots M - Kinder 1	9 ↑	9 ↑	8 ↑	8 ↑	8 ↑	8 ↑	8 ↑	8 ↑	8 ↑	8 ↑	8 ↑	8 ↑	10 ↑	10 ↑	12 ↑	12 ↑	13 ↑	13 ↑	13 ↑	13 ↑	13 ↑	12 ↑	10 ↑	10 ↑	
Houston Pilots L - Greens Bayou	9 ↑	9 ↑	8 ↑	8 ↑	8 ↑	8 ↑	8 ↑	8 ↑	8 ↑	8 ↑	8 ↑	9 ↑	10 ↑	10 ↑	12 ↑	12 ↑	13 ↑	13 ↑	13 ↑	13 ↑	13 ↑	12 ↑	10 ↑	10 ↑	
Houston Pilots K - Shell Crude	9 ↑	9 ↑	9 ↑	8 ↑	8 ↑	8 ↑	8 ↑	8 ↑	8 ↑	8 ↑	8 ↑	9 ↑	10 ↑	10 ↑	12 ↑	13 ↑	13 ↑	13 ↑	13 ↑	13 ↑	13 ↑	12 ↑	10 ↑	10 ↑	
Houston Pilots J - Lynchburg Ferries	9 ↑	9 ↑	8 ↑	8 ↑	8 ↑	8 ↑	8 ↑	8 ↑	8 ↑	8 ↑	8 ↑	9 ↑	10 ↑	10 ↑	12 ↑	13 ↑	13 ↑	13 ↑	14 ↑	14 ↑	13 ↑	12 ↑	10 ↑	10 ↑	
Houston Pilots I - Exxon 3	14 ↑	14 ↑	13 ↑	13 ↑	13 ↑	13 ↑	13 ↑	13 ↑	13 ↑	12 ↑	12 ↑	13 ↑	13 ↑	13 ↑	14 ↑	14 ↑	15 ↑	15 ↑	16 ↑	16 ↑	16 ↑	15 ↑	15 ↑	15 ↑	
Houston Pilots H - Morgans Point	14 ↑	14 ↑	13 ↑	13 ↑	13 ↑	13 ↑	13 ↑	13 ↑	12 ↑	12 ↑	12 ↑	13 ↑	13 ↑	13 ↑	14 ↑	14 ↑	15 ↑	15 ↑	16 ↑	16 ↑	15 ↑	15 ↑	15 ↑	14 ↑	
Houston Pilots G - 75/76	15 ↑	15 ↑	15 ↑	15 ↑	15 ↑	15 ↑	14 ↑	14 ↑	13 ↑	13 ↑	13 ↑	13 ↑	14 ↑	14 ↑	15 ↑	15 ↑	15 ↑	16 ↑	16 ↑	17 ↑	16 ↑	15 ↑	15 ↑	15 ↑	
Houston Pilots F - 63/64	15 ↑	15 ↑	15 ↑	15 ↑	15 ↑	15 ↑	14 ↑	14 ↑	13 ↑	13 ↑	13 ↑	13 ↑	14 ↑	14 ↑	14 ↑	15 ↑	15 ↑	15 ↑	16 ↑	16 ↑	15 ↑	15 ↑	15 ↑	15 ↑	
Houston Pilots E - 51/52	22 ↑	22 ↑	22 ↑	22 ↑	22 ↑	22 ↑	21 ↑	21 ↑	20 ↑	20 ↑	20 ↑	21 ↑	21 ↑	22 ↑	23 ↑	23 ↑	24 ↑	24 ↑	24 ↑	25 ↑	25 ↑	24 ↑	23 ↑	22 ↑	22 ↑
Houston Pilots D - 37/38	15 ↑	15 ↑	15 ↑	15 ↑	15 ↑	15 ↑	15 ↑	14 ↑	14 ↑	13 ↑	13 ↑	13 ↑	14 ↑	14 ↑	14 ↑	14 ↑	15 ↑	15 ↑	15 ↑	15 ↑	15 ↑	14 ↑	14 ↑	14 ↑	
Houston Pilots C - 25/26	14 ↑	14 ↑	15 ↑	15 ↑	14 ↑	14 ↑	14 ↑	14 ↑	13 ↑	13 ↑	13 ↑	13 ↑	14 ↑	14 ↑	14 ↑	14 ↑	14 ↑	14 ↑	14 ↑	14 ↑	14 ↑	14 ↑	13 ↑	13 ↑	
Houston Pilots B - 11/12	13 ↑	13 ↑	13 ↑	13 ↑	13 ↑	13 ↑	13 ↑	13 ↑	13 ↑	12 ↑	12 ↑	13 ↑	13 ↑	13 ↑	13 ↑	13 ↑	13 ↑	13 ↑	13 ↑	13 ↑	13 ↑	13 ↑	13 ↑	13 ↑	
Houston Pilots A - 1 & 2 Bravo	15 ↑	15 ↑	15 ↑	15 ↑	15 ↑	15 ↑	15 ↑	15 ↑	14 ↑	14 ↑	13 ↑	13 ↑	13 ↑	13 ↑	13 ↑	13 ↑	13 ↑	13 ↑	13 ↑	13 ↑	13 ↑	13 ↑	14 ↑	14 ↑	

**NOTE: This is automated data that may/may not agree with the official BAM thinking that's found on the daily slides. This data should be used as a guide only.**

## Forecast Discussion

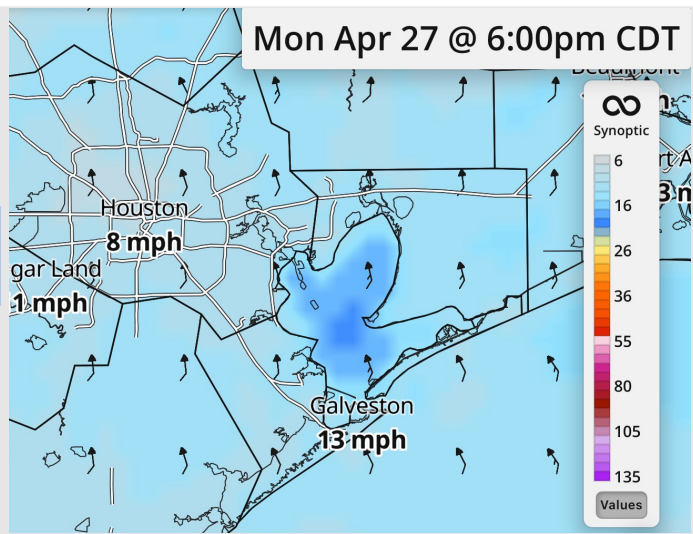
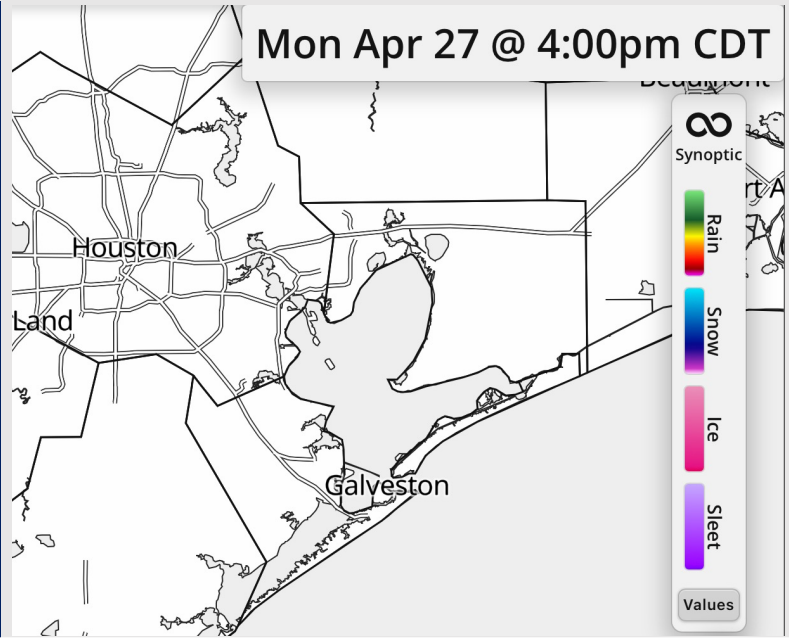
**Precip:** Dry conditions favored for today

**Wind:** Winds out of the SSE. **N of Morgan's Point:** Winds at 5 – 10 kts throughout the day. **S of Morgan's Point:** Winds of 8 – 13 kts throughout the day.

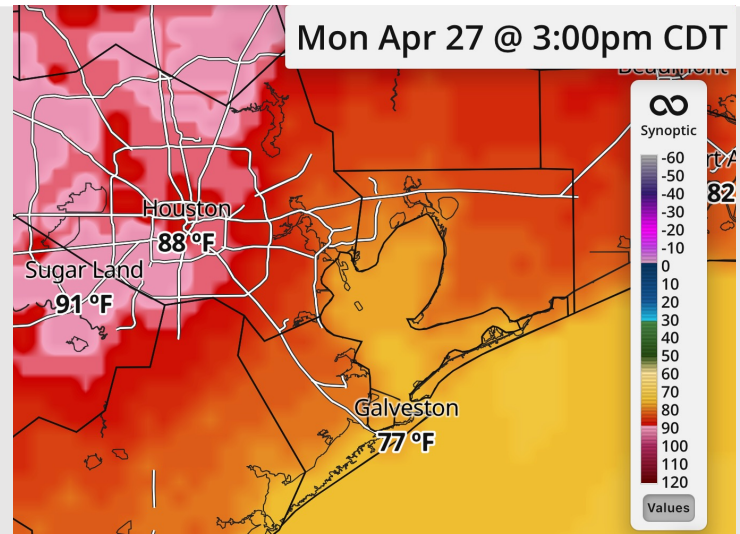
**High Temps:** **N of Morgan's Point:** High 80s F. **S of Morgan's Point:** High 70s F.

**Visibility:** Misty/hazy conditions from 12 AM – 12 PM can reduce visibilities to 3-4 miles.

## Precip Image: 4 PM CT



**Wind Speed:**  
6 PM CT



**High Temps**  
Today

# Houston Pilots: TUE. 04/28/2026

## Forecast Discussion

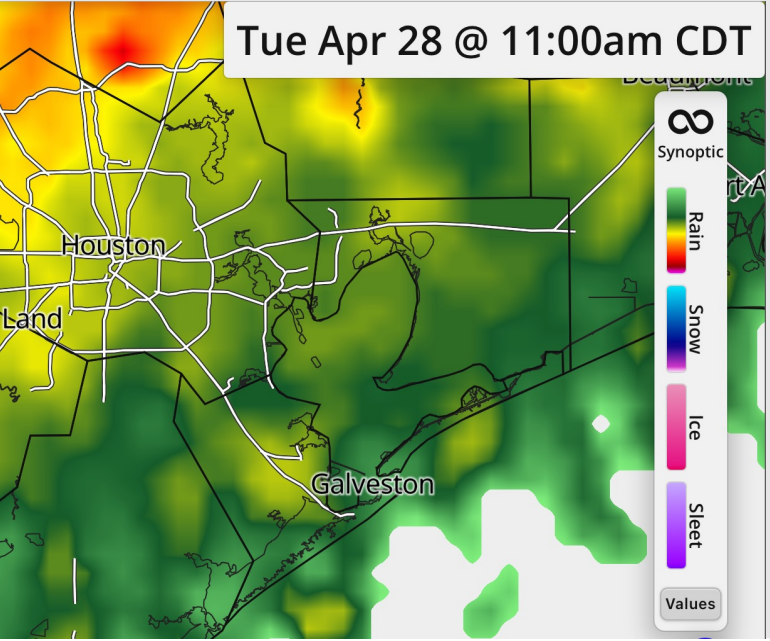
**Precip:** Scattered showers and storms possible from 8AM – 12PM. **Lightning, gusts of 35 kts and hail will be risks with storms.**

**Wind:** Winds mostly out of the SSE through the day, becoming slightly variable from 10AM – 3PM. **N of Morgan's Point:** Winds of 7 – 12 kts. **S of Morgan's Point:** Winds of 10 – 15 kts. **Gusts up to 25 kts in play S of Morgan's Point after 7PM.**

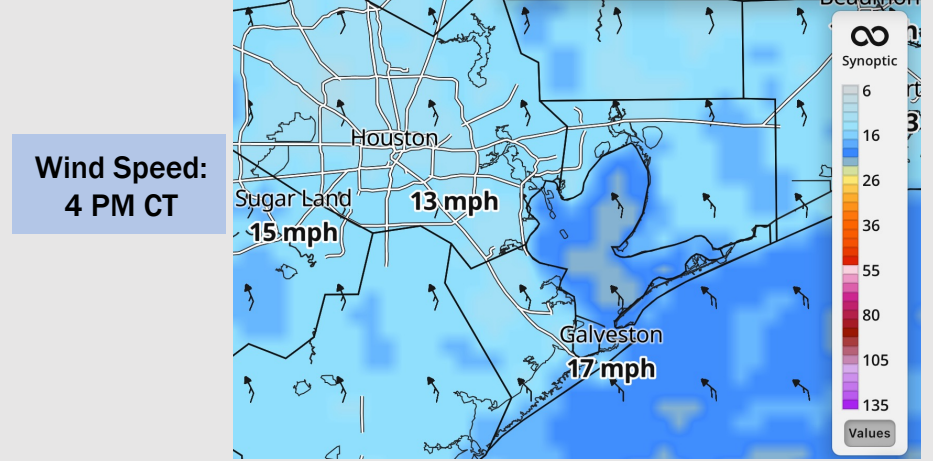
**High Temps:** **N of Morgan's Point:** Upper 80s F. **S of Morgan's Point:** Low 80s F.

**Visibility:** No visibility concerns expected.

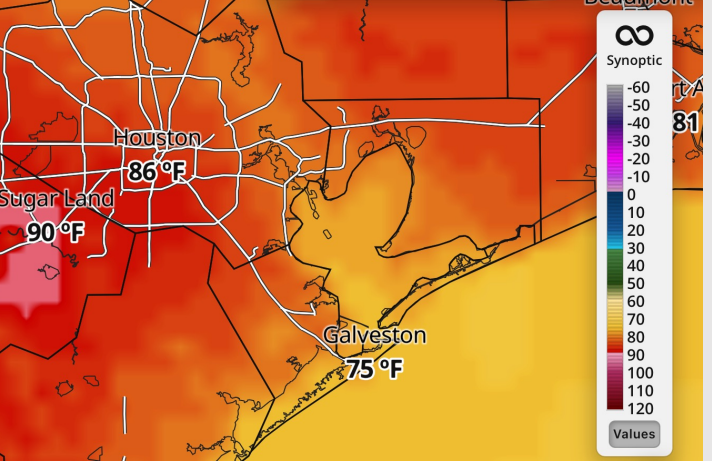
## Precip Image: 11 AM CT



## Wind Speed: 4 PM CT



## High Temps Tuesday



High Temps Tuesday

# Houston Pilots: WED. 04/29/2026

## Forecast Discussion

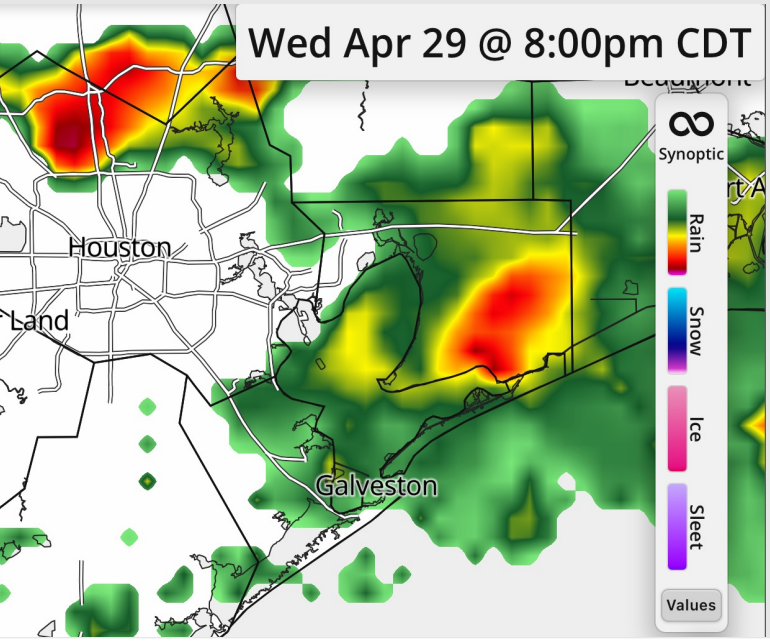
**Precip:** Scattered showers and storms in play after 5 PM. **Lightning, gusts of 35 kts and hail will be risks with storms.**

**Wind:** Winds out of the SSE. **N of Morgan's Point:** Winds of 2 – 7 kts. **S of Morgan's Point:** Winds of 9 – 14 kts. **Non-thunderstorm gusts of 20-25 kts in play through 8 AM for Stations S of Morgan's Point.**

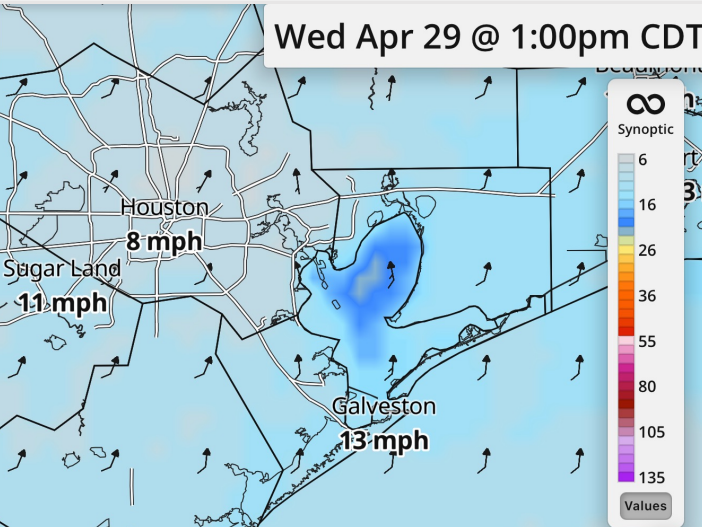
**High Temps:** **N of Morgan's Point:** Upper 80s / Low 90s F. **S of Morgan's Point:** Low 80s F.

**Visibility:** No fog concerns Wednesday, but visibilities can be reduced under heavy downpours.

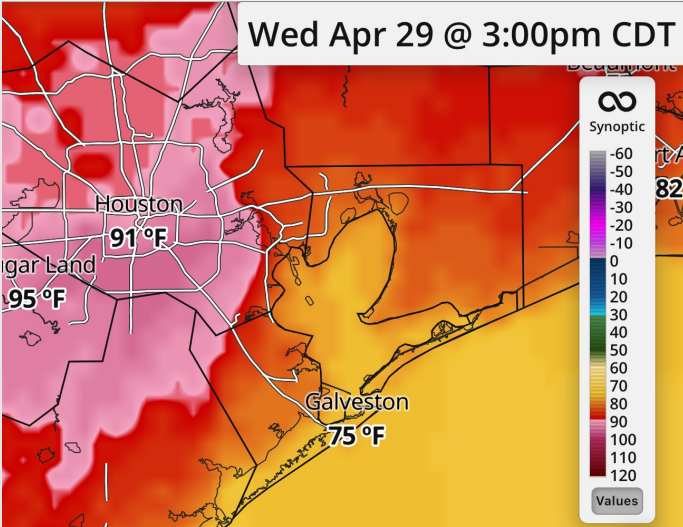
## Precip Image: 8 PM CT



## Wind Speed: 1 PM CT



## High Temps Wednesday

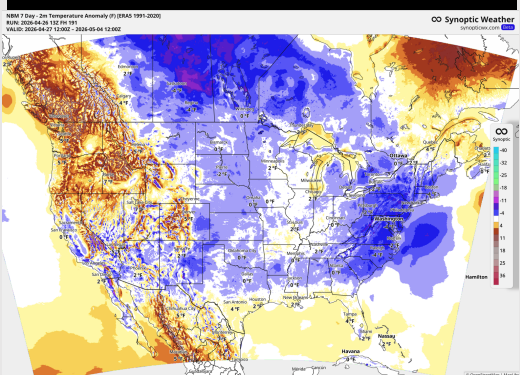


High Temps Wednesday

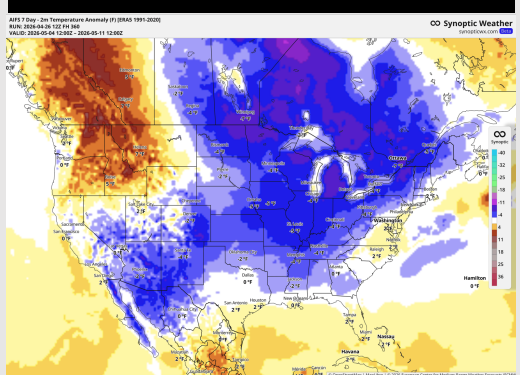
# Houston Pilots: 04/27/2026



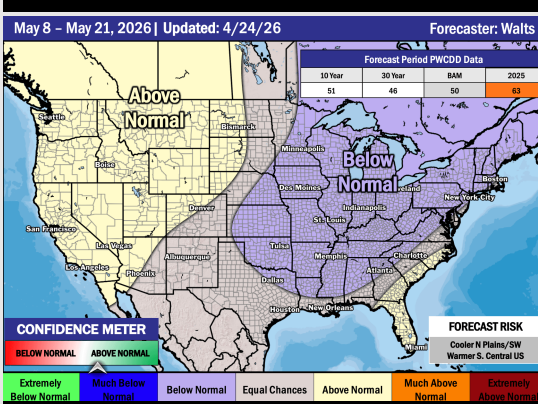
**Next 7 Day Temperature Departure**



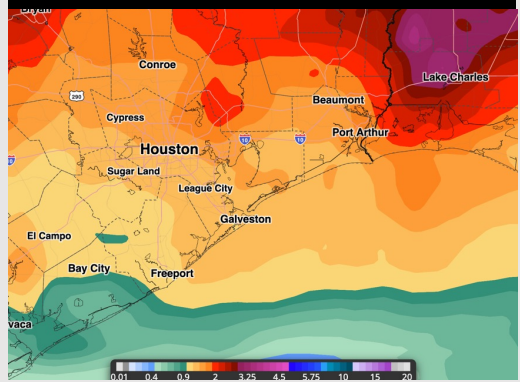
**8-14 Day Temperature Departure**



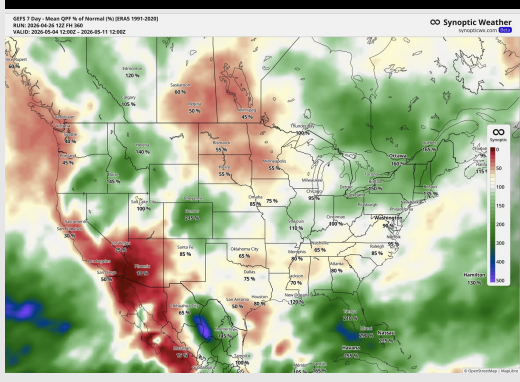
**15-30 Day Temperature Departure**



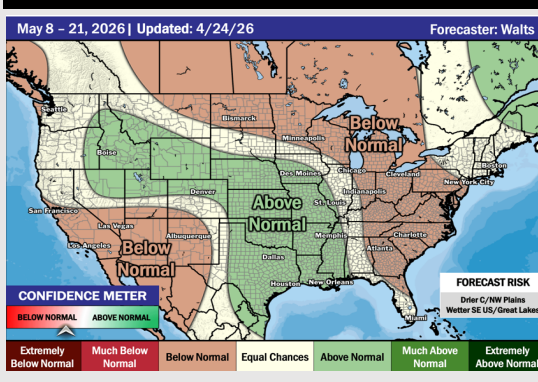
**Next 7 Day Total Precipitation**



**8-14 Day % of Average Precip.**



**15-30 Day % of Average Precip.**



- Above normal temps are favored over the next 7 days, with better rain chances the second half of the week.
- Near to above normal temperatures and below normal rain chances in the Week 2 period.
- Near normal temperatures and above normal rainfall expected through the the third week of May.