

Houston Pilots Forecast Package

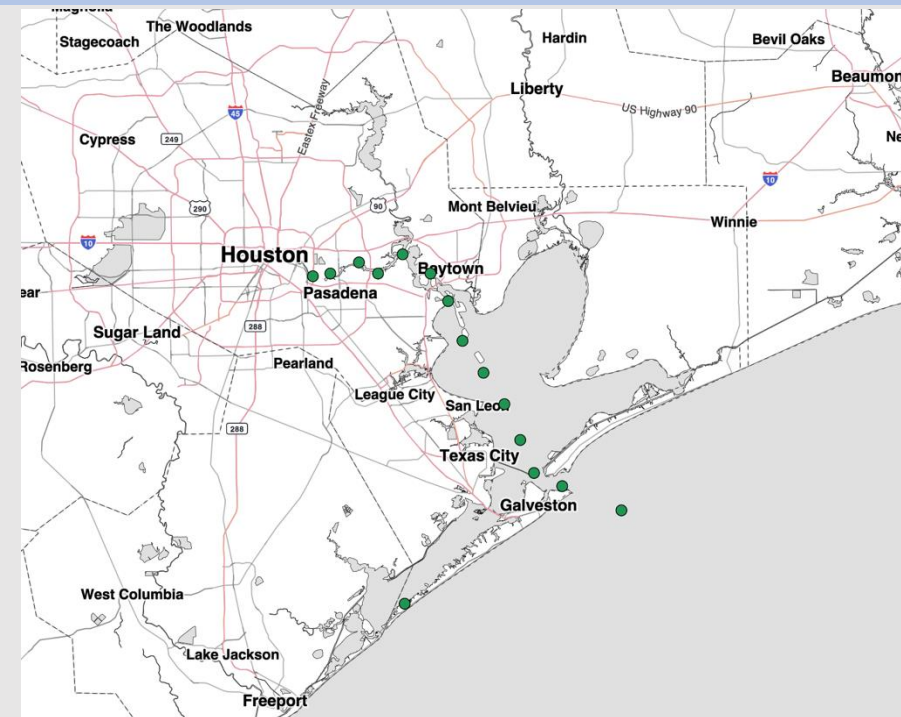


Updated: 2:10 AM CT
Sunday, April 26, 2026

Forecaster: Daniel Murphy

Weather Headlines

- **Wind gusts of 25+ kts possible this evening and Tuesday evening.**
- **Some mist/drizzle possible Sunday and Monday mornings, otherwise dry conditions favored.**
- **No fog concerns over the next 72 hours.**



Current Radar: 2:04 AM CT

As always, please do not hesitate to reach out to us with any forecast questions at [\(317\)-560-8122](tel:317-560-8122). Press 1 for forecast questions.



You can also access real-time forecast updates and 24/7 meteorological chat assistance on your [Clarity](#) app.

Houston Pilots Tropical Update



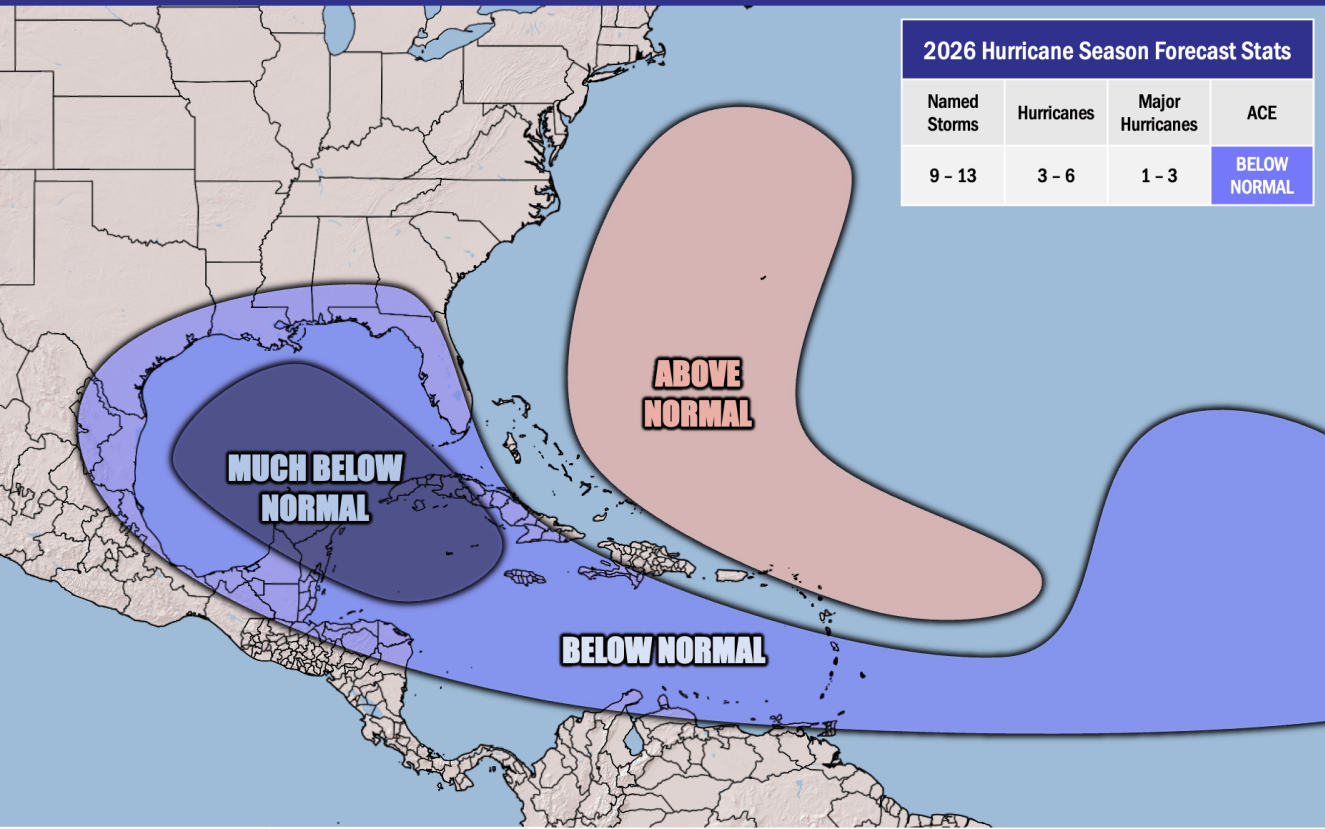
Seasonal Hurricane Outlook

2026 Hurricane Season Outlook



Updated: 4/9/26

Forecaster: Walts



2026 Hurricane Season Forecast Stats			
Named Storms	Hurricanes	Major Hurricanes	ACE
9 - 13	3 - 6	1 - 3	BELOW NORMAL

Much Below Normal
Below Normal
Near Normal
Above Normal
Much Above Normal

Graphic to the left represents our favored seasonal outlook for the 2026 Hurricane Season. Conditions expected to be less favorable for tropical development within the Gulf this season.

No notable tropical development is expected over the next 7 days.

Houston Pilots Visibility Chart (miles)



Forecast Confidence



Visibility	Sun 3 am	Sun 4 am	Sun 5 am	Sun 6 am	Sun 7 am	Sun 8 am	Sun 9 am	Sun 10 am	Sun 11 am	Sun 12 pm	Sun 1 pm	Sun 2 pm	Sun 3 pm	Sun 4 pm	Sun 5 pm	Sun 6 pm	Sun 7 pm	Sun 8 pm	Sun 9 pm	Sun 10 pm	Sun 11 pm	Mon 12 am	Mon 1 am	Mon 2 am
Houston Pilots N - 610 Bridge	5.9	4.9	4.9	3.9	4.9	3.9	3.9	5.9	6.9	6.9	6.9	6.9	9	9	10	10	10	9	9	9	9	10	8	6.9
Houston Pilots M - Kinder 1	5.9	4.9	4.9	3.9	4.9	3.9	3.9	6.9	6.9	7.9	6.9	6.9	9	10	10	10	10	9	9	9	9	10	8	6.9
Houston Pilots L - Greens Bayou	5.9	4.9	4.9	1.1	4.9	3.9	3.9	6.9	7.9	9	6.9	7.9	9	10	10	10	10	9	9	9	9	10	8	6.9
Houston Pilots K - Shell Crude	5.9	4.9	4.9	1.1	4.9	3.9	3.9	6.9	7.9	9	6.9	6.9	9	10	10	10	10	9	9	9	9	10	8	7.9
Houston Pilots J - Lynchburg Ferries	6.9	4.9	3.9	1.1	4.9	3.9	3.9	6.9	7.9	10	9	9	9	9	9	10	10	9	9	9	6.9	9	6.9	6.9
Houston Pilots I - Exxon 3	6.9	4.9	2	1.1	4.9	3.9	3.9	6.9	9	10	10	6.9	1.1	9	9	9	9	6.9	7.9	6.9	6.9	9	6.9	6.9
Houston Pilots H - Morgans Point	6.9	4.9	2	1.1	4.9	3.9	3.9	6.9	9	10	4.9	1.6	1.1	9	1.1	9	9	2	6.9	6.9	6.9	6.9	6.9	6.9
Houston Pilots G - 75/76	4.9	4.9	2.9	1.6	3.9	2.9	2	4.9	5.9	6.9	1.1	1.1	1.1	1.1	0.7	1.1	1.1	1.1	1.1	5.9	5.9	4.9	9	8
Houston Pilots F - 63/64	4.9	4.9	2.9	2.9	3.9	1.6	1.1	3.9	2.9	6.9	1.1	0.7	1.1	1.1	0.7	1.1	1.1	1.1	1.1	5.9	4.9	4.9	9	8
Houston Pilots E - 51/52	4.9	2.5	2.9	2.9	2.9	0.8	0.8	2.9	2.9	4.9	1.1	0.7	0.5	1.1	1.1	1.1	1.1	1.6	1.6	2	3	2.5	9	8
Houston Pilots D - 37/38	4.9	2.5	2.9	2.9	1.6	0.8	0.8	2.9	2.9	2.5	0.7	0.7	0.5	1.1	1.1	1.1	1.1	1.1	1.1	1.6	3	2	9	8
Houston Pilots C - 25/26	4.9	2.5	2.9	2.9	1.1	0.8	0.8	2.9	2.9	1.1	0.7	0.7	0.5	0.7	0.5	0.7	0.7	1.1	1.1	1.1	1.6	0.7	9	8
Houston Pilots B - 11/12	3.9	1.6	2.9	2.9	1.1	0.3	0.5	2.9	1.6	1.1	0.5	0.5	0.5	0.5	0.5	0.7	0.7	0.7	0.7	0.7	0.7	0.5	0.7	8
Houston Pilots A - 1 & 2 Bravo	3.9	2.5	2.5	1.1	1.1	0.3	0.5	2.9	1.1	0.7	0.5	0.5	0.7	0.5	0.5	0.7	0.7	0.7	1.1	1.1	1.1	0.7	8	8

NOTE: This is automated data that may/may not agree with the official BAM thinking that's found on the daily slides or special visibility report slides. This data should be used as a guide only

Houston Pilots Wind Chart

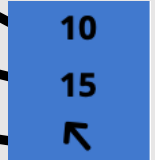


Forecast Confidence



Sustained Wind 10 Knots
Gusts 15 Knots
Wind from the SE

Example



Wind	Sun 3 am	Sun 4 am	Sun 5 am	Sun 6 am	Sun 7 am	Sun 8 am	Sun 9 am	Sun 10 am	Sun 11 am	Sun 12 pm	Sun 1 pm	Sun 2 pm	Sun 3 pm	Sun 4 pm	Sun 5 pm	Sun 6 pm	Sun 7 pm	Sun 8 pm	Sun 9 pm	Sun 10 pm	Sun 11 pm	Mon 12 am	Mon 1 am	Mon 2 am	
Houston Pilots N - 610 Bridge	5 10 ↑	3 9 ↑	3 9 ↑	3 9 ↑	3 10 ↑	5 10 ↔	6 10 ↔	6 12 ↔	7 14 ↔	8 16 ↔	9 17 ↔	9 18 ↔	10 20 ↔	10 21 ↔	10 21 ↔	10 21 ↔	10 21 ↔	10 21 ↔	10 20 ↔	9 18 ↔	8 17 ↔	8 17 ↔	8 17 ↔	8 17 ↔	
Houston Pilots M - Kinder 1	5 9 ↑	3 9 ↑	3 9 ↑	3 9 ↑	5 9 ↑	5 10 ↔	6 10 ↔	6 12 ↔	7 14 ↔	8 16 ↔	9 17 ↔	10 18 ↔	10 20 ↔	10 21 ↔	10 21 ↔	10 21 ↔	10 21 ↔	10 21 ↔	10 20 ↔	9 18 ↔	8 17 ↔	8 17 ↔	8 17 ↔	8 16 ↔	
Houston Pilots L - Greens Bayou	3 9 ↑	3 9 ↑	3 9 ↑	3 9 ↑	3 9 ↑	5 10 ↔	6 10 ↔	6 12 ↔	7 13 ↔	8 16 ↔	9 17 ↔	10 18 ↔	10 20 ↔	10 21 ↔	10 21 ↔	12 21 ↔	10 21 ↔	10 20 ↔	10 18 ↔	9 18 ↔	8 17 ↔	8 17 ↔	8 16 ↔	8 16 ↔	
Houston Pilots K - Shell Crude	3 9 ↑	3 9 ↑	3 9 ↑	3 9 ↑	5 9 ↑	5 10 ↔	6 10 ↔	6 12 ↔	7 14 ↔	8 16 ↔	9 17 ↔	10 18 ↔	10 20 ↔	10 21 ↔	12 21 ↔	12 21 ↔	10 21 ↔	10 20 ↔	10 18 ↔	9 18 ↔	8 17 ↔	8 17 ↔	8 16 ↔	8 16 ↔	
Houston Pilots J - Lynchburg Ferries	3 9 ↑	3 8 ↑	3 8 ↑	3 9 ↑	3 9 ↑	5 9 ↔	5 10 ↔	6 12 ↔	7 14 ↔	8 16 ↔	9 17 ↔	10 20 ↔	10 21 ↔	12 21 ↔	12 22 ↔	12 21 ↔	12 21 ↔	10 21 ↔	9 20 ↔	9 18 ↔	8 17 ↔	8 17 ↔	8 16 ↔	8 16 ↔	
Houston Pilots I - Exxon 3	7 10 ↑	6 10 ↑	6 10 ↑	6 10 ↑	7 10 ↑	7 12 ↔	8 13 ↔	8 13 ↔	8 14 ↔	8 16 ↔	10 17 ↔	10 20 ↔	12 21 ↔	13 22 ↔	13 22 ↔	14 22 ↔	14 22 ↔	14 22 ↔	14 21 ↔	13 20 ↔	13 20 ↔	13 20 ↔	13 18 ↔	13 17 ↔	12 17 ↔
Houston Pilots H - Morgans Point	7 10 ↑	6 10 ↑	6 9 ↑	6 10 ↑	7 10 ↑	7 10 ↔	8 12 ↔	8 13 ↔	8 14 ↔	10 16 ↔	10 17 ↔	12 20 ↔	13 21 ↔	13 22 ↔	14 22 ↔	14 22 ↔	14 22 ↔	14 21 ↔	13 20 ↔	13 20 ↔	13 20 ↔	13 18 ↔	13 18 ↔	12 17 ↔	
Houston Pilots G - 75/76	8 12 ↑	8 12 ↑	8 10 ↑	8 12 ↑	8 12 ↑	8 13 ↔	8 13 ↔	8 14 ↔	9 15 ↔	10 17 ↔	12 18 ↔	13 21 ↔	13 22 ↔	14 23 ↔	14 23 ↔	15 23 ↔	15 23 ↔	15 22 ↔	14 21 ↔	14 21 ↔	14 21 ↔	14 21 ↔	13 20 ↔	13 20 ↔	13 20 ↔
Houston Pilots F - 63/64	8 12 ↑	8 12 ↑	8 10 ↑	8 12 ↑	8 12 ↑	8 13 ↔	8 13 ↔	8 14 ↔	9 15 ↔	10 17 ↔	10 18 ↔	13 21 ↔	13 22 ↔	13 22 ↔	14 22 ↔	14 22 ↔	14 22 ↔	14 21 ↔	14 20 ↔	14 20 ↔	14 20 ↔	14 20 ↔	13 20 ↔	13 20 ↔	13 20 ↔
Houston Pilots E - 51/52	8 12 ↑	8 12 ↑	8 12 ↑	8 12 ↑	8 12 ↑	8 13 ↔	8 13 ↔	9 14 ↔	9 15 ↔	10 16 ↔	10 17 ↔	12 20 ↔	13 21 ↔	13 21 ↔	13 21 ↔	13 21 ↔	13 20 ↔	13 20 ↔	13 20 ↔	13 20 ↔	13 20 ↔	13 20 ↔	13 20 ↔	13 18 ↔	13 18 ↔
Houston Pilots D - 37/38	8 13 ↑	8 12 ↑	8 12 ↑	8 12 ↑	8 12 ↑	8 13 ↔	8 13 ↔	9 14 ↔	9 15 ↔	10 16 ↔	10 17 ↔	12 18 ↔	12 20 ↔	13 20 ↔	13 20 ↔	13 20 ↔	13 18 ↔	13 18 ↔	13 18 ↔	13 18 ↔	13 18 ↔	13 20 ↔	13 20 ↔	13 20 ↔	13 20 ↔
Houston Pilots C - 25/26	8 12 ↑	8 12 ↑	7 10 ↑	8 12 ↑	8 12 ↑	8 12 ↔	8 13 ↔	8 14 ↔	9 15 ↔	10 17 ↔	10 18 ↔	12 18 ↔	12 18 ↔	12 18 ↔	13 18 ↔	13 20 ↔	13 18 ↔	13 17 ↔	13 18 ↔	13 18 ↔	13 18 ↔	13 18 ↔	13 18 ↔	13 20 ↔	13 20 ↔
Houston Pilots B - 11/12	7 12 ↑	7 12 ↑	7 10 ↑	7 12 ↑	7 12 ↑	7 12 ↔	8 13 ↔	8 13 ↔	8 14 ↔	9 15 ↔	10 16 ↔	10 17 ↔	10 17 ↔	12 17 ↔	12 17 ↔	12 17 ↔	10 17 ↔	10 16 ↔	10 17 ↔	10 17 ↔	12 17 ↔	12 17 ↔	12 18 ↔	12 18 ↔	12 18 ↔
Houston Pilots A - 1 & 2 Bravo	8 14 ↑	8 13 ↑	8 13 ↑	8 13 ↑	8 13 ↑	8 13 ↔	8 13 ↔	8 14 ↔	9 14 ↔	9 14 ↔	9 15 ↔	10 16 ↔	10 16 ↔	10 16 ↔	10 16 ↔	10 16 ↔	12 17 ↔	12 17 ↔	13 18 ↔	13 18 ↔	13 20 ↔	14 20 ↔	14 21 ↔	14 20 ↔	

NOTE: This is automated data that may/may not agree with the official BAM thinking that's found on the daily slides. This data should be used as a guide only.

Houston Pilots: Sun. 04/26/2026



Forecast Discussion

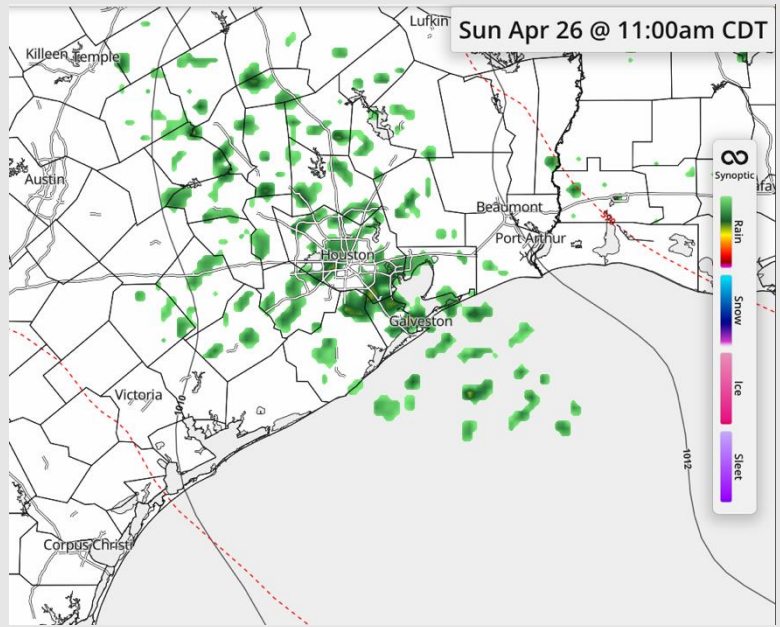
Precip: Light, isolated pockets of drizzle/mist expected from 6am to 4pm.

Wind: Winds out of the SE. **N of Morgan's Point:** Winds of 6 – 11 kts. **S of Morgan's Point:** Winds of 9 – 14 kts. **Gusts of 20-25 kts in play from 9pm to 3am.**

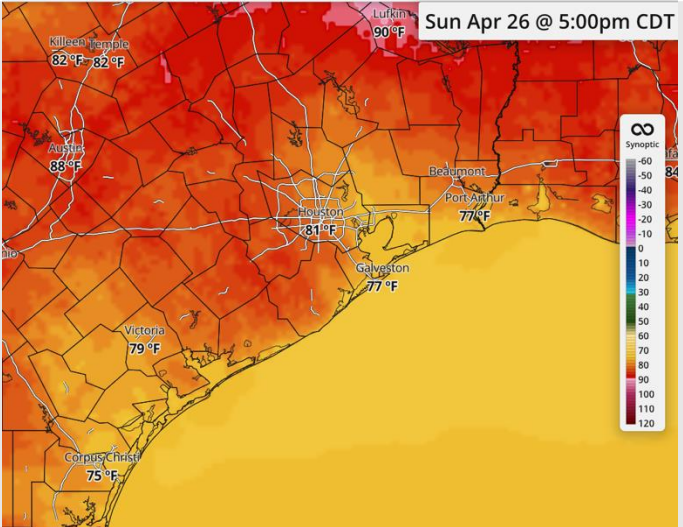
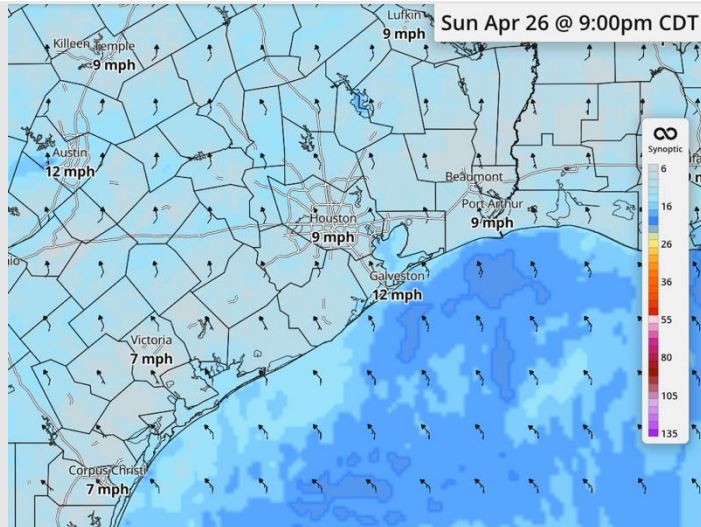
High Temps: **N of Morgan's Point:** Low 80s F. **S of Morgan's Point:** Mid-to-High 70s F.

Visibility: Drizzly conditions from 6am – 4 AM can reduce visibilities to 3-4 miles.

Precip Image: 11 AM CT



**Wind Speed:
9 PM CT**



**High Temps
SUN**

Houston Pilots: MON. 04/27/2026



Forecast Discussion

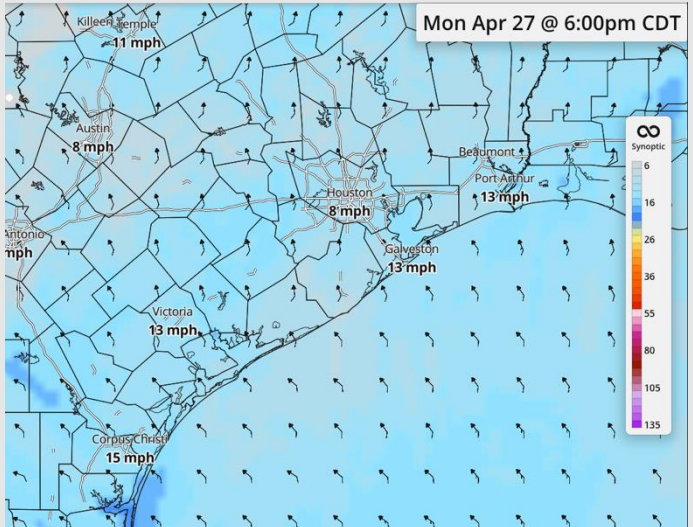
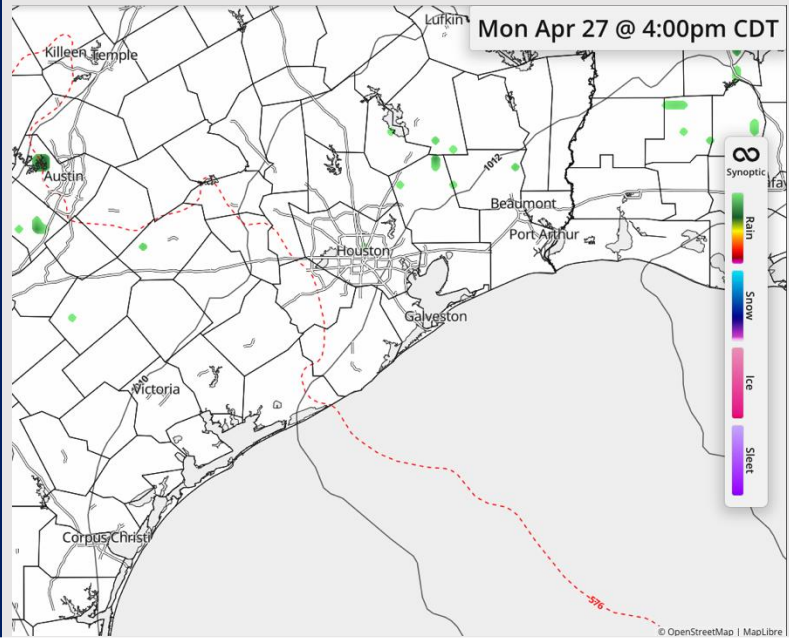
Precip: Dry conditions favored for Monday. Isolated pockets of drizzle expected to stay N of all stations.

Wind: Winds out of the SSE. **N of Morgan's Point:** Winds at 3 – 8 kts throughout the day. **S of Morgan's Point:** Winds of 8 – 13 kts throughout the day.

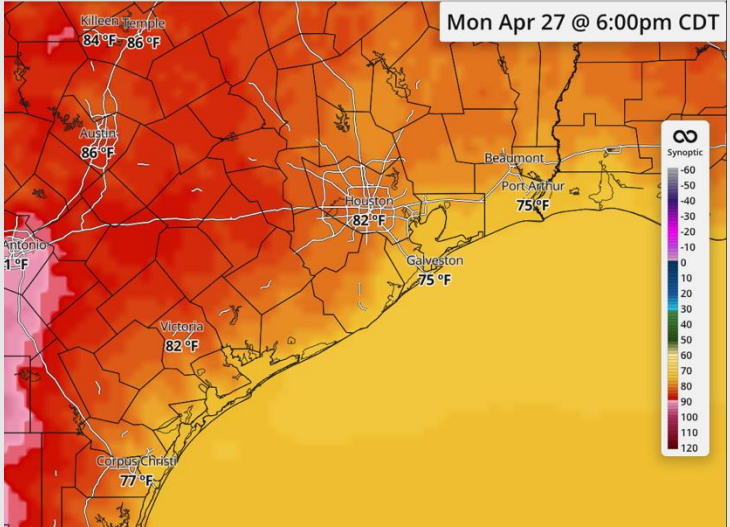
High Temps: **N of Morgan's Point:** Low 80s F. **S of Morgan's Point:** Mid 70s F.

Visibility: Misty/hazy conditions from 12 – 11 AM can reduce visibilities to 3-4 miles.

Precip Image: 4 PM CT



Wind Speed:
6 PM CT



High Temps
Sunday

Houston Pilots: TUE. 04/28/2026



Forecast Discussion

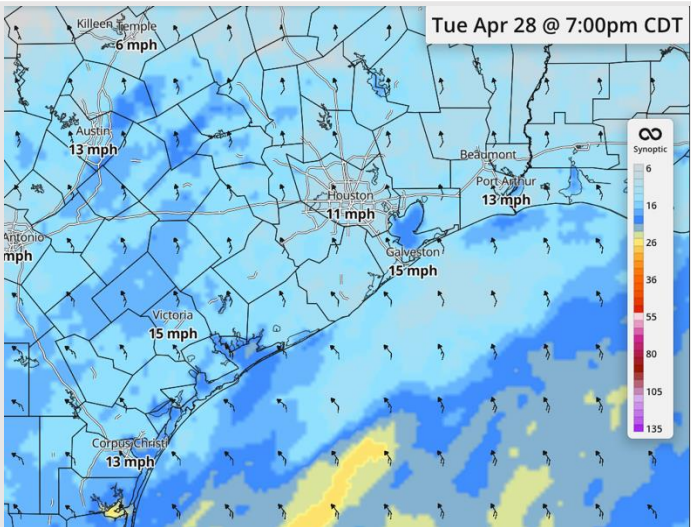
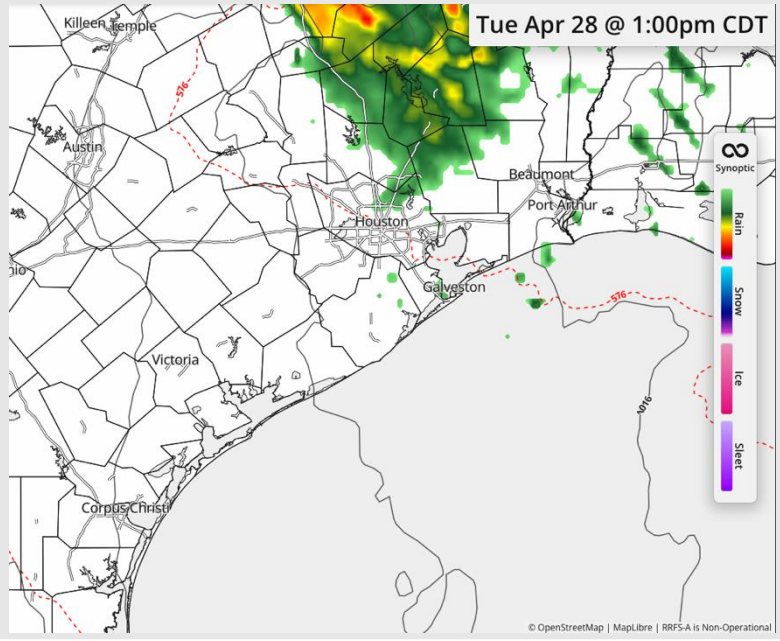
Precip: Isolated showers possible from 12 - 3PM Tuesday.

Wind: Winds out of the SSE through the day. **N of Morgan's Point:** Winds of 6 - 11 kts. **S of Morgan's Point:** Winds of 10 - 15 kts. **Gusts up to 27 kts in play S of Morgan's Point from 7pm to 1am.**

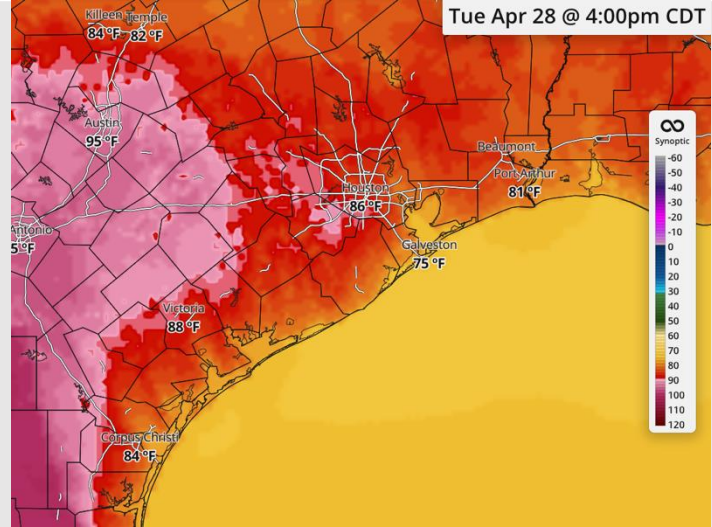
High Temps: **N of Morgan's Point:** Upper 80s F. **S of Morgan's Point:** Low 80s F.

Visibility: No visibility concerns expected.

Precip Image: 1 PM CT

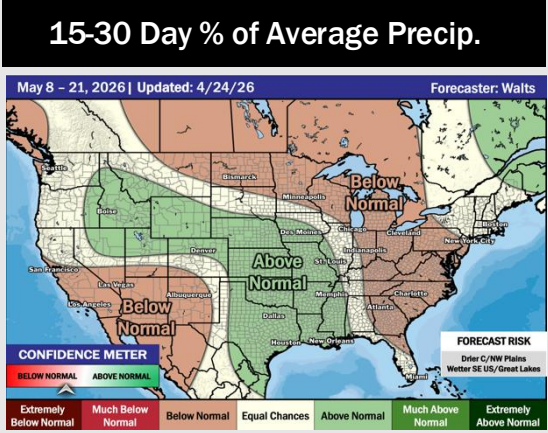
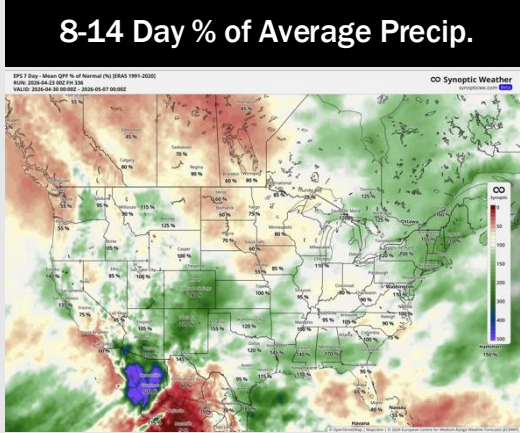
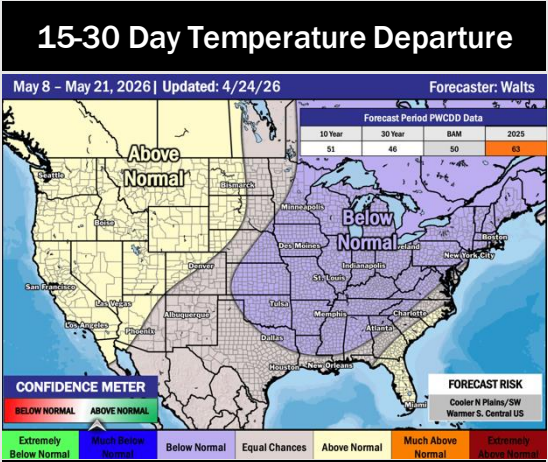
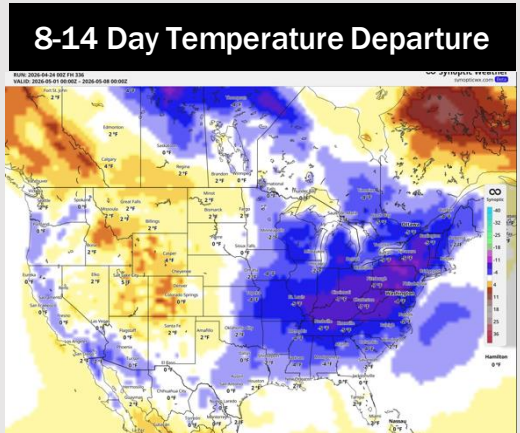
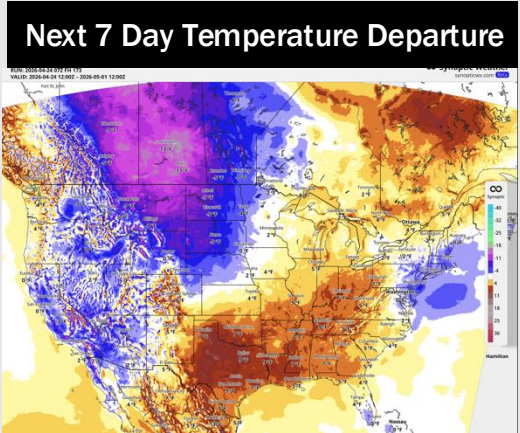


**Wind Speed:
7 PM CT**



**High Temps
Monday**

Houston Pilots: 04/26/2026



- Above normal temps are favored over the next 7 days, with better rain chances late next week.
- Near to below normal temperatures and above normal rain chances in the Week 2 period.
- Near normal temperatures and above normal rainfall expected through the the third week of May.