

Houston Pilots Forecast Package

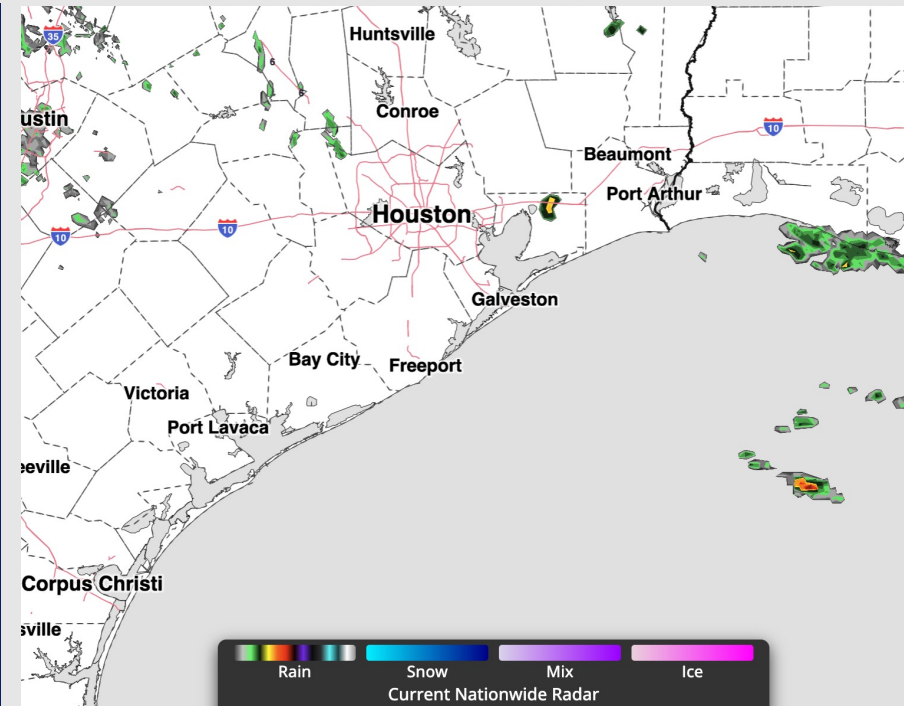


Updated: 10:40 PM CT
Tuesday, April 21, 2026

Forecaster: Ratkay

Weather Headlines

- Wind gusts up to 20 - 25 kts possible WED - FRI evening.
- Storms move through midday Wednesday, with a strong storm possible.
- Isolated fog possible N of Morgan's Point Thursday morning.



Current Radar: 10:40 PM CT

As always, please do not hesitate to reach out to us with any forecast questions at [\(317\)-560-8122](tel:317-560-8122). Press 1 for forecast questions.



You can also access real-time forecast updates and 24/7 meteorological chat assistance on your [Clarity](#) app.

Houston Pilots Tropical Update



Seasonal Hurricane Outlook

2026 Hurricane Season Outlook



Updated: 4/9/26

Forecaster: Waits



2026 Hurricane Season Forecast Stats			
Named Storms	Hurricanes	Major Hurricanes	ACE
9 - 13	3 - 6	1 - 3	BELOW NORMAL

Much Below Normal
Below Normal
Near Normal
Above Normal
Much Above Normal

Graphic to the left represents our favored seasonal outlook for the 2026 Hurricane Season. Conditions expected to be less favorable for tropical development within the Gulf this season.

No notable tropical development is expected over the next 7 days.

Houston Pilots Visibility Chart (miles)



Forecast Confidence



Visibility	Tue 11 pm	Wed 12 am	Wed 1 am	Wed 2 am	Wed 3 am	Wed 4 am	Wed 5 am	Wed 6 am	Wed 7 am	Wed 8 am	Wed 9 am	Wed 10 am	Wed 11 am	Wed 12 pm	Wed 1 pm	Wed 2 pm	Wed 3 pm	Wed 4 pm	Wed 5 pm	Wed 6 pm	Wed 7 pm	Wed 8 pm	Wed 9 pm	Wed 10 pm
Houston Pilots N - 610 Bridge	4.9	3.9	3.9	3.9	3.9	3.9	3.9	3.9	2.9	2.5	2.5	5.9	6.9	6.9	6.9	6.9	6.9	6.9	6.9	7.9	6.9	7.9	9	9
Houston Pilots M - Kinder 1	4.9	4.9	3.9	3.9	3.9	3.9	3.9	3.9	2.9	2.5	2.9	5.9	6.9	6.9	6.9	6.9	6.9	6.9	6.9	7.9	6.9	7.9	9	9
Houston Pilots L - Greens Bayou	4.9	4.9	3.9	3.9	3.9	3.9	3.9	3.9	3.9	2.9	2.9	5.9	6.9	6.9	6.9	6.9	6.9	7.9	6.9	7.9	6.9	7.9	10	9
Houston Pilots K - Shell Crude	4.9	4.9	3.9	3.9	3.9	3.9	3.9	3.9	3.9	2.9	2.9	5.9	6.9	6.9	6.9	6.9	6.9	7.9	6.9	7.9	6.9	7.9	10	9
Houston Pilots J - Lynchburg Ferries	4.9	4.9	4.9	3.9	3.9	3.9	3.9	3.9	3.9	2.9	3.9	6.9	6.9	6.9	6.9	6.9	6.9	7.9	6.9	7.9	7.9	7.9	10	9
Houston Pilots I - Exxon 3	4.9	4.9	4.9	3.9	3.9	4.9	4.9	3.9	3.9	2.9	3.9	6.9	6.9	6.9	6.9	6.9	6.9	7.9	6.9	7.9	7.9	7.9	10	9
Houston Pilots H - Morgans Point	4.9	4.9	4.9	3.9	3.9	4.9	4.9	4.9	3.9	2.9	3.9	6.9	6.9	6.9	6.9	6.9	6.9	7.9	6.9	7.9	6.9	7.9	10	9
Houston Pilots G - 75/76	5.9	5.9	6.9	6.9	6.9	6.9	6.9	10	9	7.9	6.9	6.9	6.9	6.9	7.9	6.9	6.9	7.9	6.9	6.9	6.9	6.9	9	9
Houston Pilots F - 63/64	5.9	6.9	6.9	6.9	6.9	6.9	7.9	10	10	9	6.9	6.9	6.9	7.9	7.9	6.9	6.9	7.9	5.9	6.9	6.9	6.9	9	9
Houston Pilots E - 51/52	6.9	6.9	6.9	6.9	6.9	10	9	10	10	10	10	6.9	6.9	7.9	7.9	6.9	6.9	7.9	6.9	6.9	6.9	6.9	9	9
Houston Pilots D - 37/38	6.9	6.9	6.9	6.9	6.9	10	9	10	10	10	10	6.9	6.9	7.9	7.9	6.9	6.9	7.9	6.9	6.9	6.9	6.9	9	9
Houston Pilots C - 25/26	6.9	6.9	6.9	7.9	9	10	10	10	10	10	10	7.9	6.9	7.9	7.9	6.9	6.9	7.9	6.9	6.9	6.9	6.9	9	9
Houston Pilots B - 11/12	6.9	6.9	7.9	9	9	10	10	10	10	10	10	7.9	6.9	7.9	7.9	6.9	7.9	7.9	6.9	6.9	6.9	6.9	9	9
Houston Pilots A - 1 & 2 Bravo	6.9	7.9	7.9	9	10	10	10	10	10	10	10	7.9	6.9	7.9	7.9	6.9	7.9	7.9	6.9	6.9	6.9	6.9	9	9

NOTE: This is automated data that may/may not agree with the official B.A.M. thinking that's found on the daily slides or special visibility report slides. This data should be used as a guide only

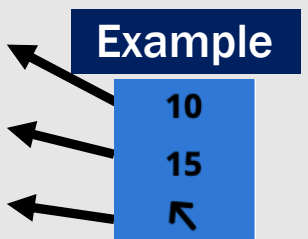
Houston Pilots Wind Chart



Forecast Confidence



Sustained Wind 10 Knots
Gusts 15 Knots
Wind from the SE



Wind	Tue 11 pm	Wed 12 am	Wed 1 am	Wed 2 am	Wed 3 am	Wed 4 am	Wed 5 am	Wed 6 am	Wed 7 am	Wed 8 am	Wed 9 am	Wed 10 am	Wed 11 am	Wed 12 pm	Wed 1 pm	Wed 2 pm	Wed 3 pm	Wed 4 pm	Wed 5 pm	Wed 6 pm	Wed 7 pm	Wed 8 pm	Wed 9 pm	Wed 10 pm
Houston Pilots N - 610 Bridge	7 ←	6 ←	6 ←	5 ←	5 ←	3 ←	3 ←	3 ←	3 ←	3 ←	3 ←	3 ←	5 ←	6 ←	6 ←	7 ←	8 ←	8 ←	8 ←	8 ←	8 ←	8 ←	8 ←	7 ←
Houston Pilots M - Kinder 1	7 ←	6 ←	6 ←	5 ←	5 ←	3 ←	3 ←	3 ←	3 ←	3 ←	3 ←	3 ←	5 ←	6 ←	6 ←	7 ←	8 ←	8 ←	8 ←	8 ←	8 ←	8 ←	8 ←	7 ←
Houston Pilots L - Greens Bayou	7 ←	6 ←	6 ←	6 ←	5 ←	3 ←	3 ←	3 ←	3 ←	3 ←	3 ←	3 ←	5 ←	6 ←	7 ←	7 ←	8 ←	8 ←	9 ←	9 ←	9 ←	8 ←	8 ←	8 ←
Houston Pilots K - Shell Crude	8 ←	7 ←	6 ←	6 ←	5 ←	5 ←	3 ←	3 ←	3 ←	3 ←	3 ←	3 ←	5 ←	6 ←	7 ←	8 ←	8 ←	8 ←	9 ←	9 ←	9 ←	9 ←	8 ←	8 ←
Houston Pilots J - Lynchburg Ferries	7 ←	6 ←	6 ←	6 ←	5 ←	3 ←	3 ←	3 ←	3 ←	3 ←	3 ←	3 ←	5 ←	6 ←	7 ←	8 ←	8 ←	8 ←	9 ←	9 ←	9 ←	8 ←	8 ←	8 ←
Houston Pilots I - Exxon 3	12 ←	10 ←	10 ←	9 ←	8 ←	8 ←	7 ←	6 ←	6 ←	6 ←	6 ←	6 ←	7 ←	8 ←	9 ←	10 ←	10 ←	10 ←	12 ←	13 ←	13 ←	13 ←	12 ←	12 ←
Houston Pilots H - Morgans Point	13 ←	12 ←	10 ←	10 ←	9 ←	8 ←	8 ←	7 ←	6 ←	6 ←	6 ←	6 ←	7 ←	7 ←	8 ←	9 ←	10 ←	10 ←	12 ←	13 ←	13 ←	13 ←	12 ←	12 ←
Houston Pilots G - 75/76	15 ←	14 ←	13 ←	13 ←	12 ←	10 ←	9 ←	9 ←	8 ←	8 ←	8 ←	7 ←	8 ←	8 ←	8 ←	10 ←	10 ←	12 ←	13 ←	13 ←	14 ←	14 ←	13 ←	13 ←
Houston Pilots F - 63/64	15 ←	14 ←	13 ←	13 ←	12 ←	10 ←	10 ←	9 ←	8 ←	8 ←	8 ←	8 ←	8 ←	8 ←	8 ←	10 ←	10 ←	13 ←	13 ←	13 ←	13 ←	13 ←	13 ←	13 ←
Houston Pilots E - 51/52	15 ←	15 ←	14 ←	13 ←	13 ←	12 ←	10 ←	10 ←	9 ←	8 ←	8 ←	8 ←	8 ←	8 ←	9 ←	10 ←	10 ←	12 ←	13 ←	13 ←	13 ←	13 ←	13 ←	14 ←
Houston Pilots D - 37/38	15 ←	15 ←	14 ←	13 ←	13 ←	12 ←	10 ←	10 ←	9 ←	8 ←	8 ←	8 ←	8 ←	8 ←	9 ←	10 ←	10 ←	12 ←	13 ←	13 ←	13 ←	13 ←	13 ←	14 ←
Houston Pilots C - 25/26	15 ←	14 ←	13 ←	13 ←	12 ←	10 ←	10 ←	10 ←	9 ←	8 ←	8 ←	8 ←	8 ←	9 ←	9 ←	10 ←	10 ←	12 ←	13 ←	13 ←	13 ←	13 ←	13 ←	13 ←
Houston Pilots B - 11/12	13 ←	13 ←	13 ←	12 ←	10 ←	10 ←	10 ←	9 ←	8 ←	8 ←	8 ←	8 ←	8 ←	9 ←	9 ←	10 ←	10 ←	12 ←	12 ←	13 ←	13 ←	13 ←	12 ←	13 ←
Houston Pilots A - 1 & 2 Bravo	15 ←	15 ←	14 ←	14 ←	13 ←	13 ←	12 ←	12 ←	10 ←	10 ←	10 ←	9 ←	9 ←	9 ←	9 ←	10 ←	10 ←	12 ←	12 ←	13 ←	13 ←	13 ←	14 ←	14 ←

NOTE: This is automated data that may/may not agree with the official BAM thinking that's found on the daily slides. This data should be used as a guide only.

Houston Pilots: WED. 04/22/2026

Forecast Discussion

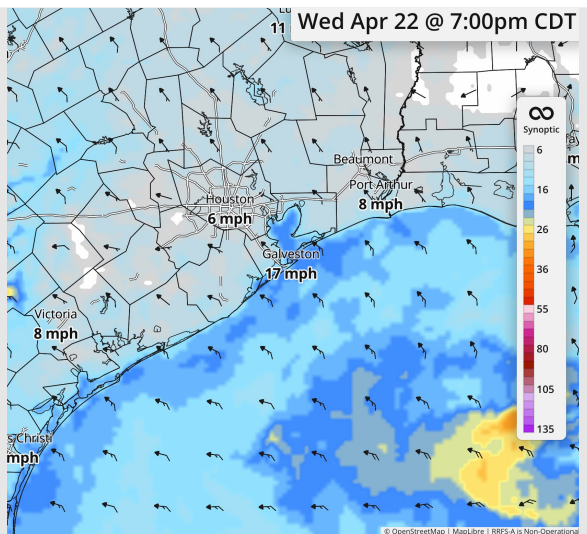
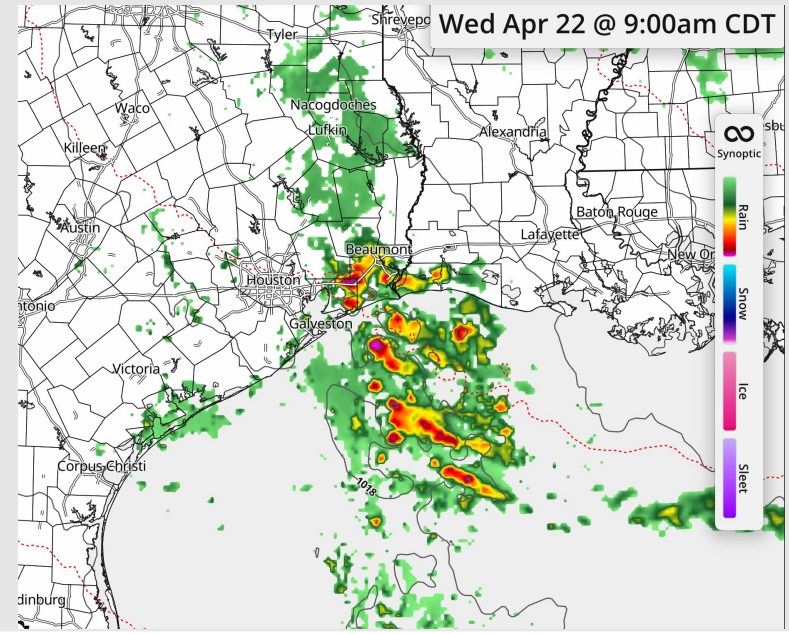
Precip Image: 9 AM CT

Precip: Scattered showers and storms possible from 4 AM - 6 PM, then dry after 6 PM. **A few stronger storms possible from 9 AM - 2 PM, some capable of producing small hail and gusts up to 30 kts.**

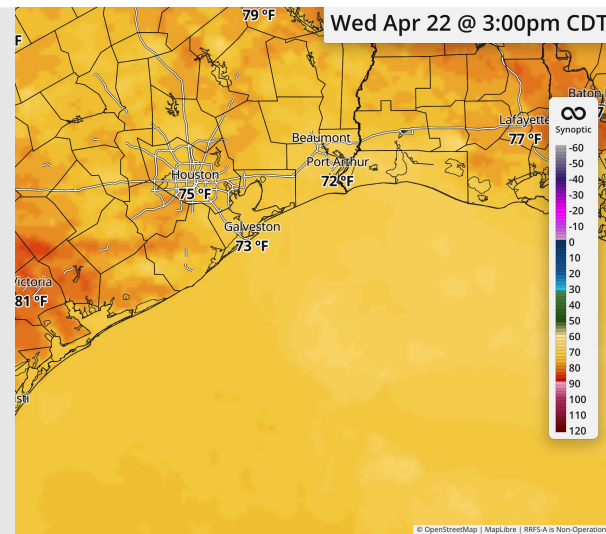
Wind: Winds out of the SE. **N of Morgan's Point:** Winds of 3 - 9 kts through the day. **S of Morgan's Point:** Winds of 14 - 18 kts through the day. **Non-thunderstorm gusts up to 20 - 23 kts for Stations S of Morgan's Point after 5 PM.**

High Temps: **N of Morgan's Point:** Mid 70s F. **S of Morgan's Point:** Mid 70s F

Visibility: Visibility may be reduced by heavy downpours.



Wind Speed:
7 PM CT



High Temps
Wednesday

Houston Pilots: THU. 04/23/2026



Forecast Discussion

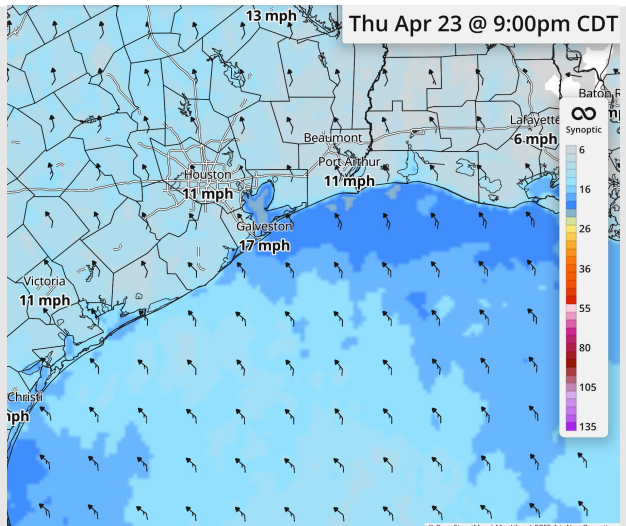
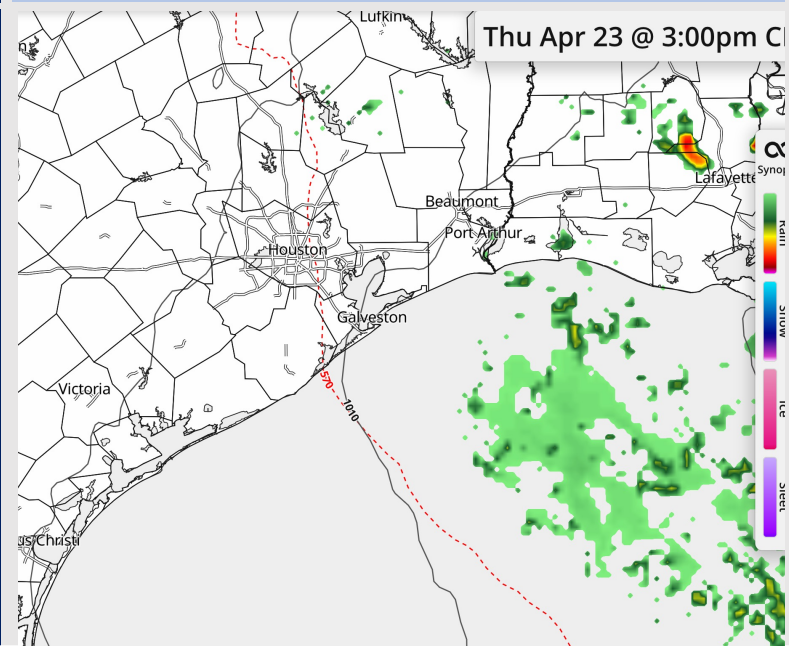
Precip: Dry conditions favored.

Wind: Winds out of the SE throughout the day. **N of Morgan's Point:** Light winds near 3 - 7 kts, increasing to 7 - 11 kts after 9 AM. **S of Morgan's Point:** Winds of 15 - 21 kts. **Gusts up to 20 - 25 kts for all stations after 7 PM.**

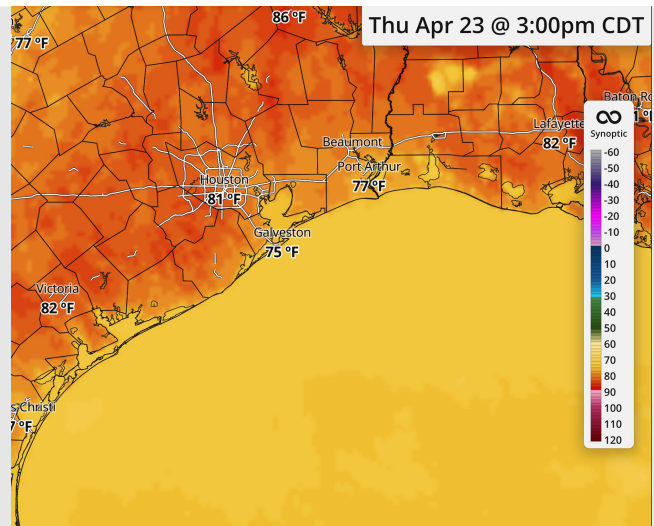
High Temps: **N of Morgan's Point:** Low 80s F. **S of Morgan's Point:** Mid 70s F.

Visibility: Very isolated pockets of fog possible from 4 - 8 AM Thursday morning N of Morgan's point.

Precip Image: 3 PM CT



**Wind Speed:
9 PM CT**



**High Temps
Thursday**

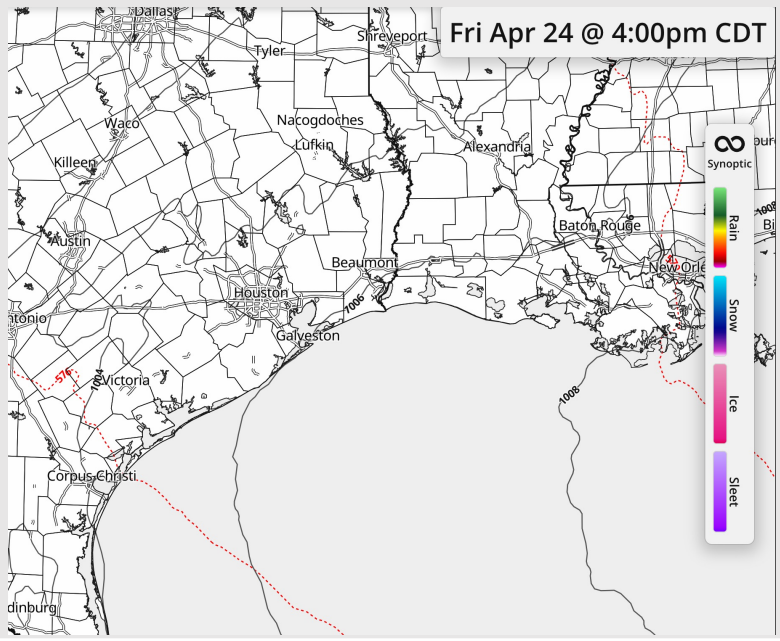
Houston Pilots: FRI. 04/24/2026



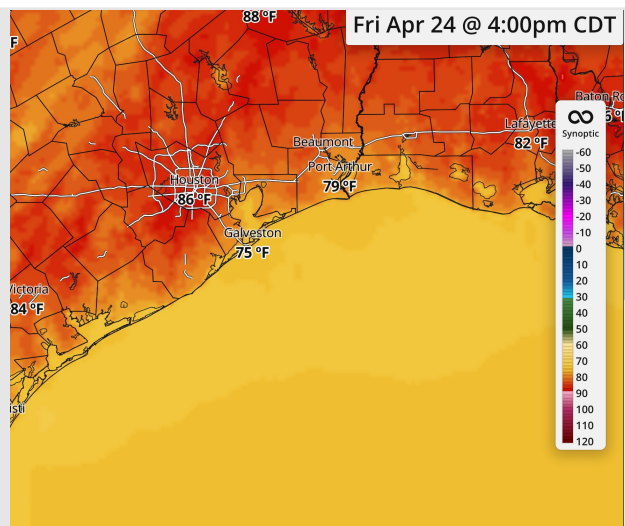
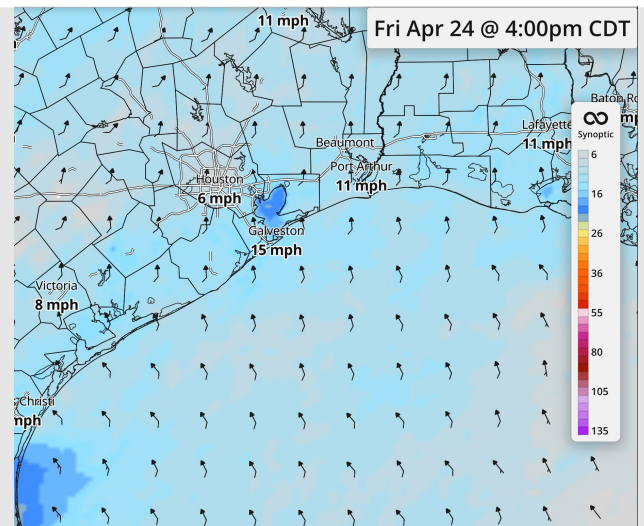
Forecast Discussion

- Precip:** Dry conditions favored.
- Wind:** Winds out of the SSE through the rest of the day. **N of Morgan's Point:** Winds of 5 – 10 kts. **S of Morgan's Point:** Winds of 13 – 18 kts. **Gusts up to 20 kts after 8 PM for Stations S of Morgan's Point.**
- High Temps:** **N of Morgan's Point:** Mid 80s F. **S of Morgan's Point:** Mid 70s F.
- Visibility:** No visibility concerns Friday.

Precip Image: 4 PM CT



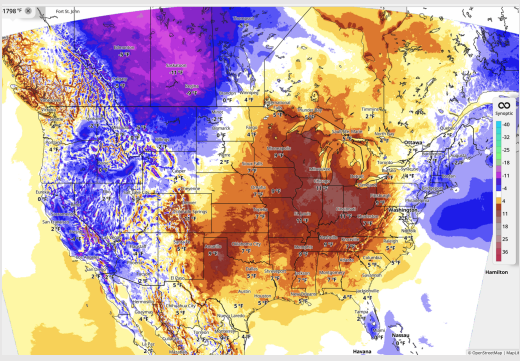
Wind Speed:
4 PM CT



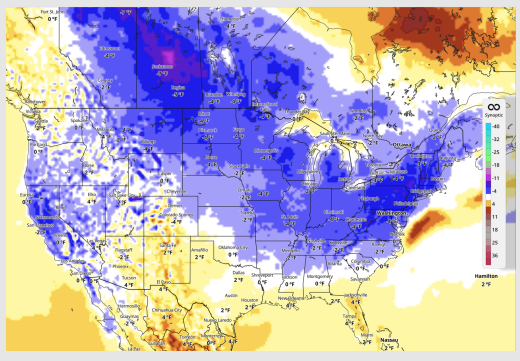
High Temps
Friday

Houston Pilots: 04/22/2026

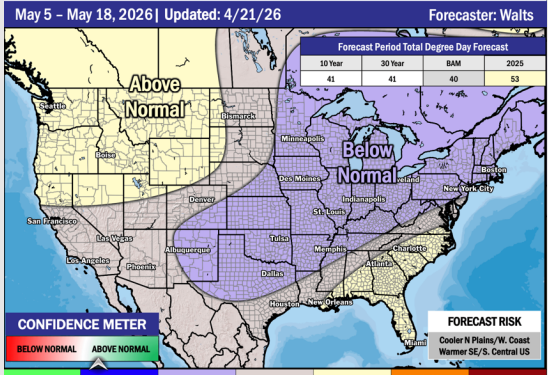
Next 7 Day Temperature Departure



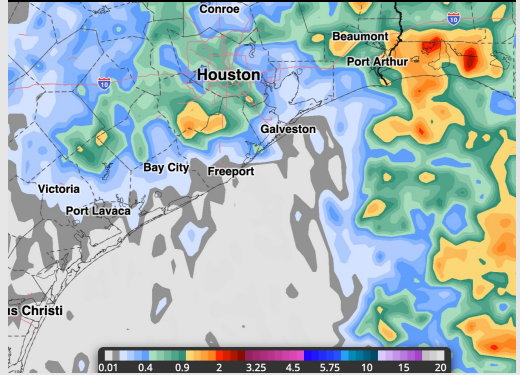
8-14 Day Temperature Departure



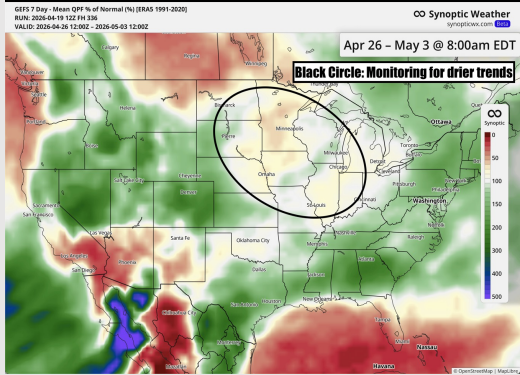
15-30 Day Temperature Departure



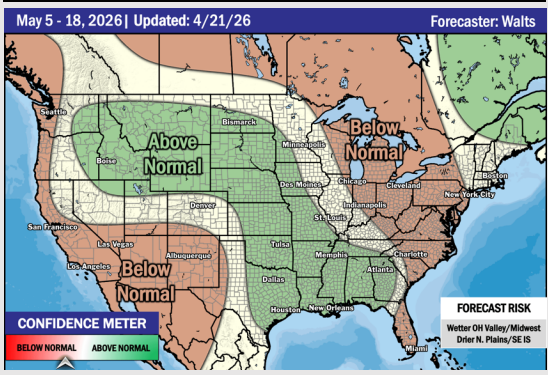
Next 7 Day Total Precipitation



8-14 Day % of Average Precip.



15-30 Day % of Average Precip.



- Near normal temps are favored over the next 7 days, with scattered storm chances through the week.
- Near normal temperatures and above normal rain chances in the Week 2 period.
- Below normal temperatures and below normal rainfall expected through the beginning of May.