

Houston Pilots Forecast Package

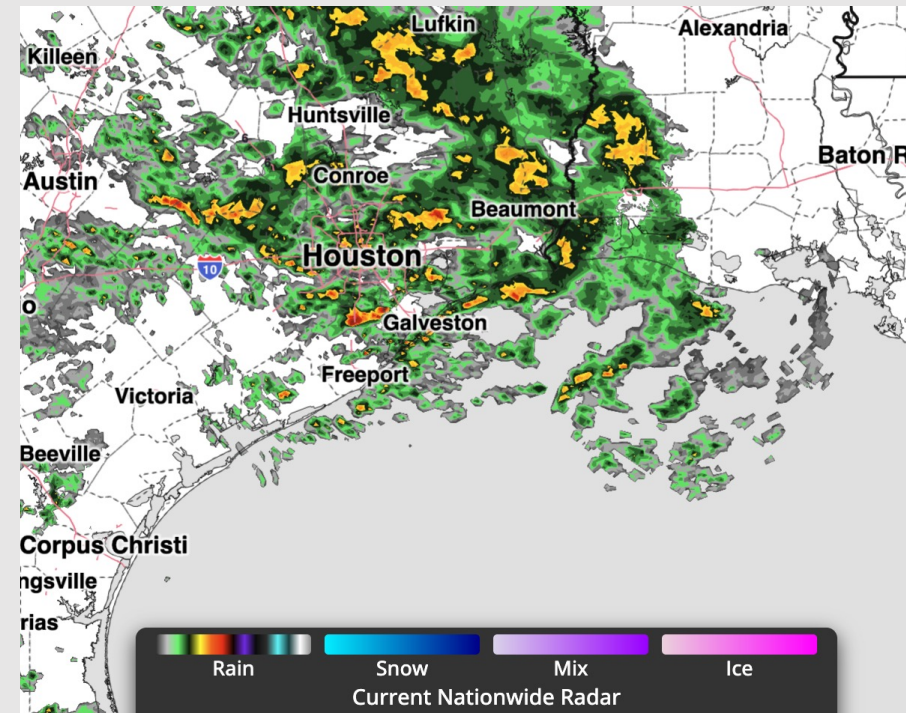


Updated: 3 PM CT
Tuesday, April 21, 2026

Forecaster: Ratkay

Weather Headlines

- Wind gusts up to 25 kts possible TUE - THU evening.
- Showers taper off this evening. Storms move through midday Wednesday, with strong storms possible.
- Isolated fog possible N of Morgan's Point Thursday morning.



Current Radar: 2:58 PM CT

As always, please do not hesitate to reach out to us with any forecast questions at [\(317\)-560-8122](tel:317-560-8122). Press 1 for forecast questions.



You can also access real-time forecast updates and 24/7 meteorological chat assistance on your [Clarity](#) app.

Houston Pilots Tropical Update



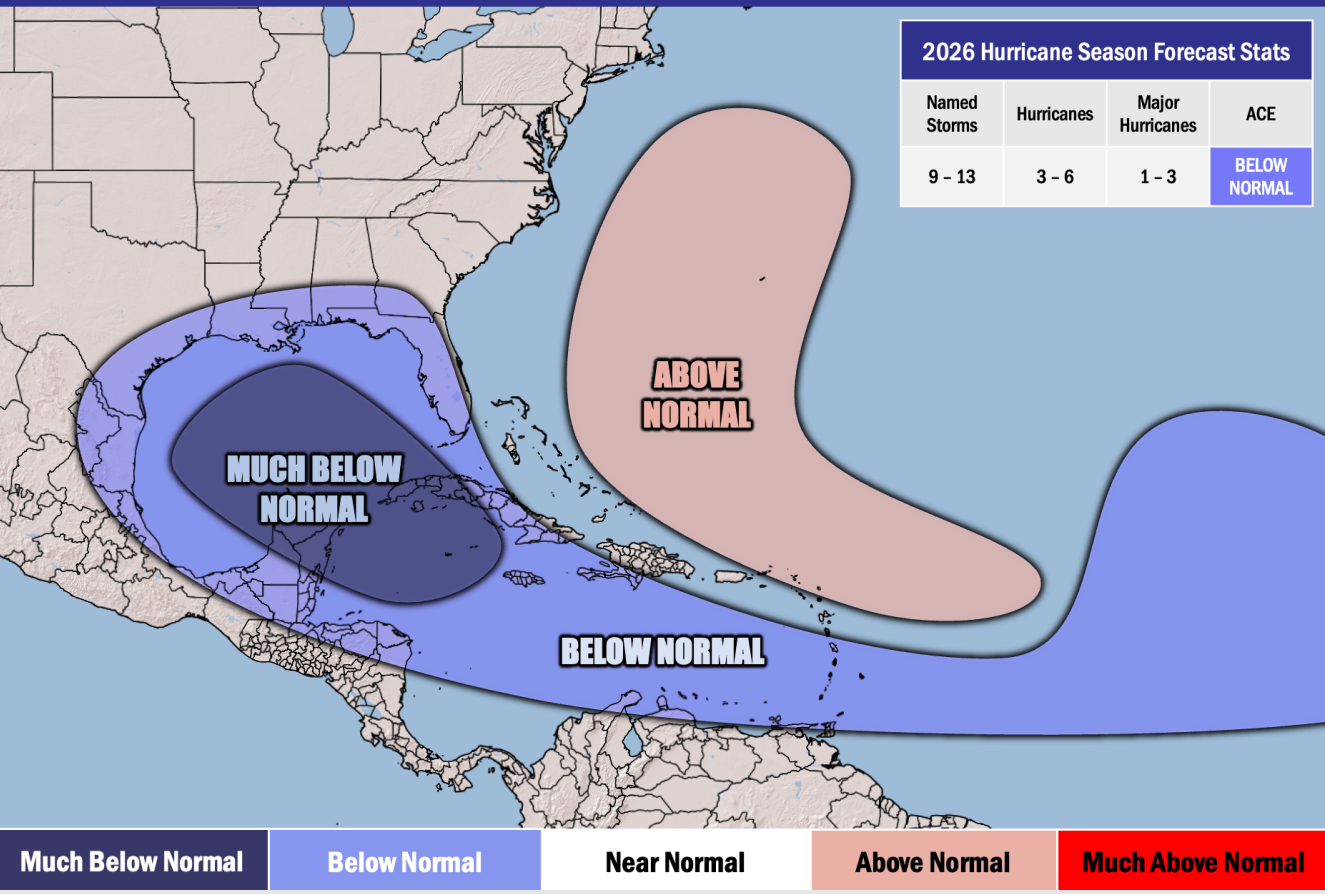
Seasonal Hurricane Outlook

2026 Hurricane Season Outlook



Updated: 4/9/26

Forecaster: Waits



Graphic to the left represents our favored seasonal outlook for the 2026 Hurricane Season. Conditions expected to be less favorable for tropical development within the Gulf this season.

No notable tropical development is expected over the next 7 days.

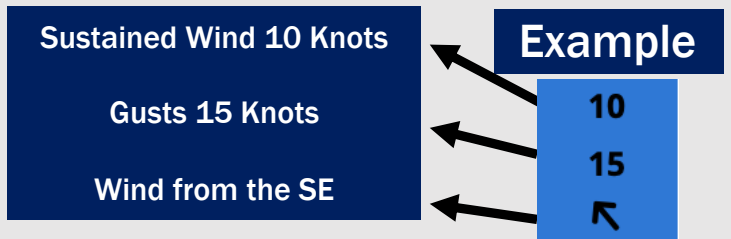
Houston Pilots Visibility Chart (miles)



Visibility	Tue 4 pm	Tue 5 pm	Tue 6 pm	Tue 7 pm	Tue 8 pm	Tue 9 pm	Tue 10 pm	Tue 11 pm	Wed 12 am	Wed 1 am	Wed 2 am	Wed 3 am	Wed 4 am	Wed 5 am	Wed 6 am	Wed 7 am	Wed 8 am	Wed 9 am	Wed 10 am	Wed 11 am	Wed 12 pm	Wed 1 pm	Wed 2 pm	Wed 3 pm
Houston Pilots N - 610 Bridge	3.9	4.9	6.9	7.9	7.9	6.9	9	9	10	6.9	6.9	4.9	4.9	4.9	4.9	4.9	3.9	3.9	6.9	10	10	10	10	10
Houston Pilots M - Kinder 1	3.9	4.9	6.9	7.9	7.9	6.9	9	9	10	6.9	6.9	4.9	4.9	4.9	4.9	4.9	3.9	3.9	6.9	9	10	10	10	10
Houston Pilots L - Greens Bayou	3.9	4.9	4.9	7.9	7.9	6.9	9	7.9	9	6.9	5.9	4.9	4.9	4.9	4.9	4.9	3.9	3.9	6.9	7.9	9	9	9	10
Houston Pilots K - Shell Crude	3.9	4.9	6.9	7.9	7.9	6.9	9	9	9	6.9	6.9	4.9	4.9	4.9	4.9	4.9	3.9	3.9	6.9	7.9	9	7.9	9	10
Houston Pilots J - Lynchburg Ferries	3.9	4.9	6.9	7.9	6.9	6.9	9	7.9	7.9	6.9	5.9	4.9	4.9	4.9	4.9	4.9	3.9	3.9	6.9	7.9	9	7.9	9	10
Houston Pilots I - Exxon 3	3.9	5.9	6.9	7.9	7.9	6.9	9	9	9	6.9	6.9	4.9	4.9	5.9	5.9	5.9	4.9	3.9	6.9	7.9	9	7.9	9	10
Houston Pilots H - Morgans Point	4.9	6.9	6.9	7.9	7.9	7.9	9	9	9	6.9	6.9	6.9	6.9	6.9	6.9	6.9	5.9	4.9	6.9	7.9	9	7.9	7.9	10
Houston Pilots G - 75/76	6.9	6.9	7.9	9	9	9	10	9	10	10	7.9	9	9	9	10	10	6.9	4.9	6.9	7.9	9	7.9	10	10
Houston Pilots F - 63/64	6.9	6.9	9	10	9	10	10	9	10	10	9	9	10	10	10	10	7.9	4.9	6.9	7.9	9	9	10	10
Houston Pilots E - 51/52	9	10	9	10	10	10	10	10	10	10	10	10	10	10	10	10	10	6.9	6.9	9	9	9	10	10
Houston Pilots D - 37/38	9	10	10	10	10	10	10	10	10	10	10	10	10	10	10	10	10	6.9	6.9	9	10	9	10	10
Houston Pilots C - 25/26	9	10	10	10	10	10	10	10	10	10	10	10	10	10	10	10	10	9	9	10	10	10	10	10
Houston Pilots B - 11/12	10	10	10	10	10	10	10	10	10	10	10	10	10	10	10	10	10	9	9	10	10	10	10	9
Houston Pilots A - 1 & 2 Bravo	10	10	10	10	10	10	10	10	10	10	10	10	10	10	10	10	10	9	7.9	10	10	7.9	9	9

NOTE: This is automated data that may/may not agree with the official BAM thinking that's found on the daily slides or special visibility report slides. This data should be used as a guide only

Houston Pilots Wind Chart



Wind	Tue 4 pm	Tue 5 pm	Tue 6 pm	Tue 7 pm	Tue 8 pm	Tue 9 pm	Tue 10 pm	Tue 11 pm	Wed 12 am	Wed 1 am	Wed 2 am	Wed 3 am	Wed 4 am	Wed 5 am	Wed 6 am	Wed 7 am	Wed 8 am	Wed 9 am	Wed 10 am	Wed 11 am	Wed 12 pm	Wed 1 pm	Wed 2 pm	Wed 3 pm
Houston Pilots N - 610 Bridge	12 23 ←	12 23 ←	12 23 ←	10 23 ←	10 21 ←	9 20 ←	8 17 ←	7 16 ←	6 15 ←	6 13 ←	5 12 ←	5 10 ←	3 9 ←	3 8 ←	3 7 ←	3 7 ←	3 8 ←	3 9 ←	3 10 ←	5 10 ←	6 13 ←	7 15 ←	8 15 ←	8 15 ←
Houston Pilots M - Kinder 1	12 23 ←	12 23 ←	12 23 ←	10 22 ←	10 21 ←	9 20 ←	8 17 ←	7 16 ←	6 15 ←	6 13 ←	6 12 ←	5 10 ←	3 9 ←	3 8 ←	3 7 ←	3 7 ←	3 8 ←	3 9 ←	3 10 ←	5 10 ←	6 13 ←	7 14 ←	8 15 ←	8 15 ←
Houston Pilots L - Greens Bayou	12 22 ←	12 23 ←	12 23 ←	10 22 ←	10 20 ←	9 20 ←	8 17 ←	8 16 ←	7 15 ←	6 13 ←	6 12 ←	5 10 ←	3 9 ←	3 8 ←	3 7 ←	3 7 ←	3 8 ←	3 9 ←	3 10 ←	5 10 ←	6 13 ←	7 14 ←	8 15 ←	8 15 ←
Houston Pilots K - Shell Crude	12 23 ←	12 23 ←	12 23 ←	12 22 ←	10 21 ←	9 20 ←	8 18 ←	8 16 ←	7 15 ←	6 14 ←	6 12 ←	5 10 ←	5 9 ←	3 9 ←	3 8 ←	3 7 ←	3 7 ←	3 8 ←	3 9 ←	6 10 ←	6 13 ←	8 14 ←	8 15 ←	8 16 ←
Houston Pilots J - Lynchburg Ferries	12 22 ←	12 23 ←	12 23 ←	12 22 ←	10 20 ←	9 20 ←	8 17 ←	8 16 ←	7 15 ←	6 13 ←	6 12 ←	5 10 ←	3 8 ←	3 7 ←	3 7 ←	3 7 ←	3 8 ←	3 8 ←	3 9 ←	5 10 ←	6 13 ←	8 14 ←	8 15 ←	8 16 ←
Houston Pilots I - Exxon 3	14 24 ←	14 23 ←	15 23 ←	15 23 ←	14 21 ←	13 20 ←	13 20 ←	12 18 ←	10 17 ←	10 16 ←	9 15 ←	8 14 ←	8 12 ←	7 10 ←	6 9 ←	6 9 ←	6 9 ←	6 9 ←	6 9 ←	7 12 ←	8 13 ←	8 15 ←	9 16 ←	10 17 ←
Houston Pilots H - Morgans Point	15 24 ←	15 24 ←	15 24 ←	15 24 ←	14 22 ←	13 21 ←	13 20 ←	13 20 ←	12 18 ←	10 17 ←	10 16 ←	9 14 ←	8 13 ←	8 12 ←	7 10 ←	6 10 ←	6 9 ←	6 9 ←	6 9 ←	7 12 ←	8 13 ←	8 15 ←	10 16 ←	10 17 ←
Houston Pilots G - 75/76	16 25 ←	16 26 ←	16 26 ←	16 25 ←	15 24 ←	15 23 ←	15 22 ←	15 22 ←	14 21 ←	13 20 ←	13 18 ←	12 17 ←	10 16 ←	9 14 ←	9 14 ←	8 13 ←	8 12 ←	8 12 ←	7 12 ←	8 13 ←	8 14 ←	9 16 ←	10 17 ←	12 18 ←
Houston Pilots F - 63/64	16 25 ←	16 26 ←	16 26 ←	16 24 ←	15 23 ←	15 23 ←	15 22 ←	15 22 ←	15 21 ←	14 20 ←	13 18 ←	12 17 ←	10 16 ←	10 15 ←	9 14 ←	8 13 ←	8 12 ←	8 12 ←	8 12 ←	8 13 ←	8 14 ←	9 16 ←	10 17 ←	12 18 ←
Houston Pilots E - 51/52	16 25 ←	16 25 ←	16 25 ←	16 24 ←	15 23 ←	15 22 ←	15 22 ←	15 22 ←	15 21 ←	14 20 ←	13 20 ←	13 17 ←	12 17 ←	10 16 ←	10 15 ←	9 14 ←	8 13 ←	8 13 ←	8 12 ←	8 13 ←	9 14 ←	10 16 ←	10 17 ←	12 18 ←
Houston Pilots D - 37/38	16 25 ←	16 25 ←	16 25 ←	16 24 ←	16 23 ←	15 22 ←	15 22 ←	15 22 ←	15 21 ←	14 20 ←	13 20 ←	13 17 ←	12 17 ←	10 16 ←	10 15 ←	9 14 ←	9 13 ←	8 13 ←	8 13 ←	8 13 ←	9 15 ←	10 16 ←	10 17 ←	12 18 ←
Houston Pilots C - 25/26	17 25 ←	16 25 ←	16 24 ←	16 24 ←	15 22 ←	15 22 ←	15 21 ←	15 21 ←	15 21 ←	14 20 ←	13 18 ←	13 17 ←	12 17 ←	10 16 ←	10 15 ←	9 14 ←	9 13 ←	8 13 ←	8 13 ←	8 13 ←	9 14 ←	10 15 ←	10 17 ←	12 18 ←
Houston Pilots B - 11/12	16 24 ←	16 23 ←	15 23 ←	15 22 ←	15 21 ←	15 21 ←	14 21 ←	14 20 ←	13 20 ←	13 18 ←	12 17 ←	12 16 ←	10 16 ←	10 16 ←	9 15 ←	9 14 ←	8 13 ←	8 13 ←	8 12 ←	8 13 ←	9 14 ←	10 15 ←	10 16 ←	12 17 ←
Houston Pilots A - 1 & 2 Bravo	16 24 ←	15 23 ←	16 23 ←	16 23 ←	15 23 ←	15 23 ←	15 22 ←	15 22 ←	15 21 ←	15 21 ←	14 20 ←	13 18 ←	13 18 ←	13 17 ←	12 16 ←	10 15 ←	10 15 ←	10 14 ←	9 14 ←	9 14 ←	9 15 ←	10 16 ←	10 16 ←	10 16 ←

NOTE: This is automated data that may/may not agree with the official BAM thinking that's found on the daily slides. This data should be used as a guide only.

Houston Pilots: TUE. 04/21/2026



Forecast Discussion

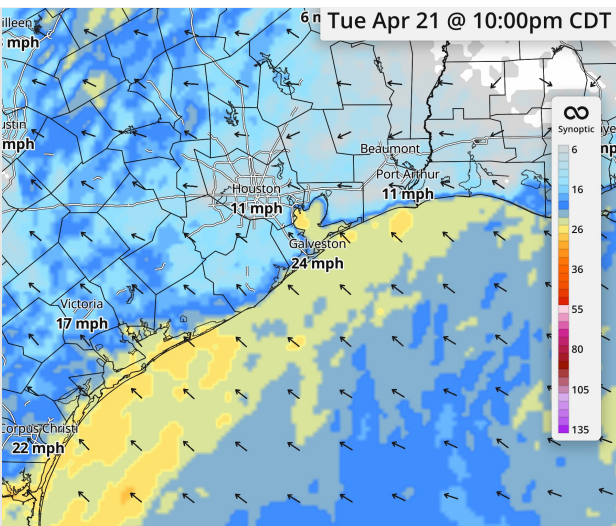
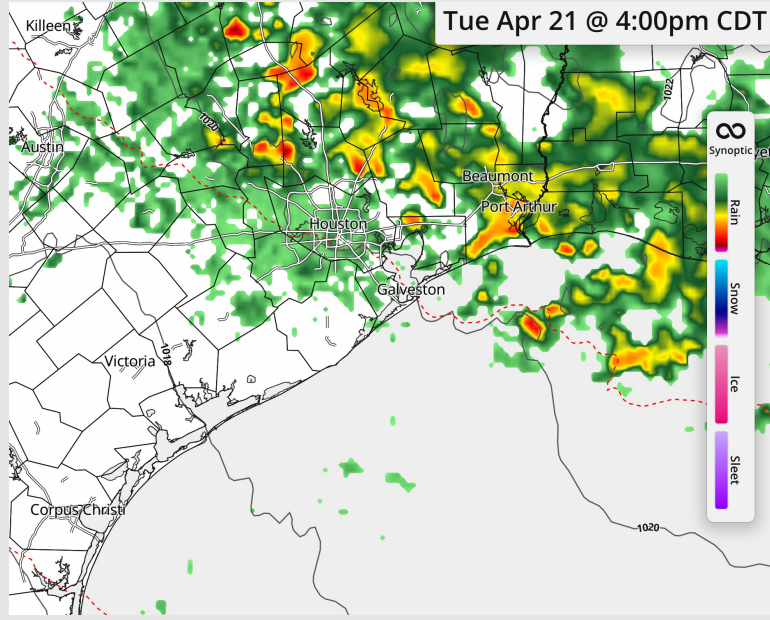
Precip: Scattered showers and isolated lightning continues through 6 PM for all stations, then dry conditions favored.

Wind: Winds out of the ESE through the rest of the day. **N of Morgan's Point:** Winds of 5 – 10 kts. **S of Morgan's Point:** Winds of 15 – 20 kts. **Gusts up to 20 – 25 kts until 11 PM for Stations S of Morgan's Point.**

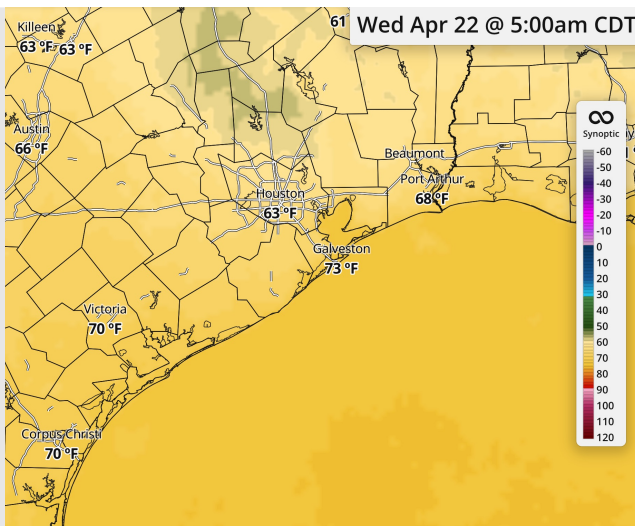
Low Temps: **N of Morgan's Point:** Mid 60s F. **S of Morgan's Point:** Low 70s F.

Visibility: Visibility may be reduced by heavy downpours.

Precip Image: 4 PM CT



**Wind Speed:
10 PM CT**



**Low Temps
Wed AM**

Houston Pilots: WED. 04/22/2026

Forecast Discussion

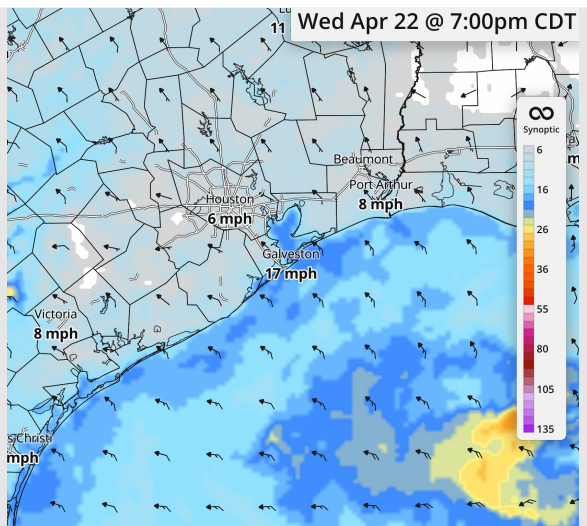
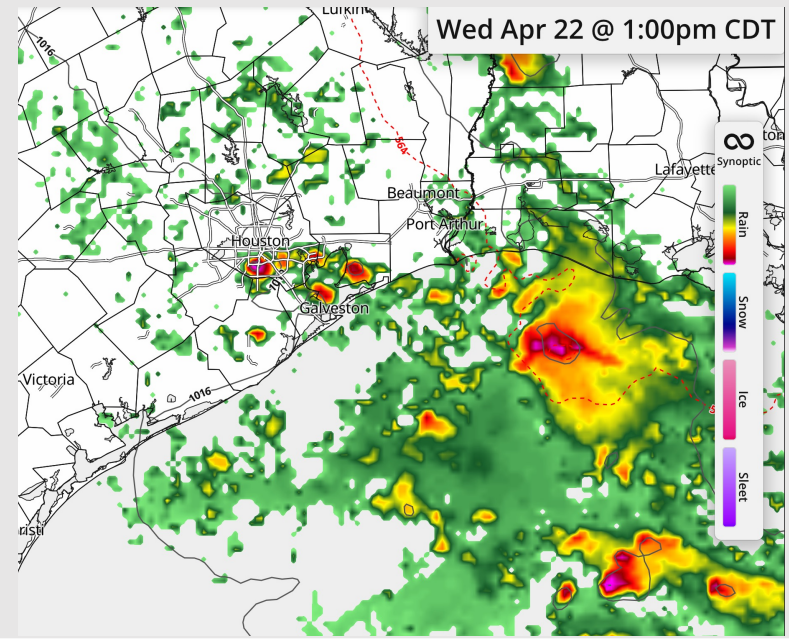
Precip: Scattered showers and storms possible from 4 AM - 6 PM, then dry after 6 PM. **A few stronger storms possible from 9 AM - 2 PM, with small hail and gusts up to 35 kts.**

Wind: Winds out of the SE. **N of Morgan's Point:** Winds of 3 - 9 kts through the day. **S of Morgan's Point:** Winds of 14 - 18 kts through the day. **Non-thunderstorm gusts up to 20 - 23 kts for Stations S of Morgan's Point after 5 PM.**

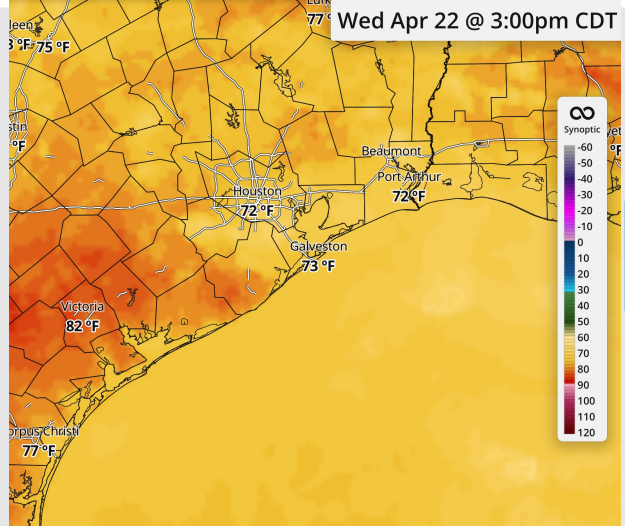
High Temps: **N of Morgan's Point:** Mid 70s F. **S of Morgan's Point:** Mid 70s F

Visibility: Visibility may be reduced by heavy downpours.

Precip Image: 1 PM CT



Wind Speed:
7 PM CT



High Temps
Wednesday

Houston Pilots: THU. 04/23/2026



Forecast Discussion

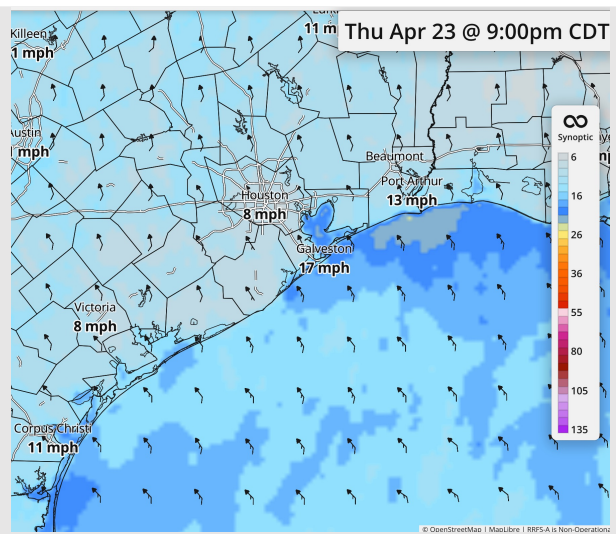
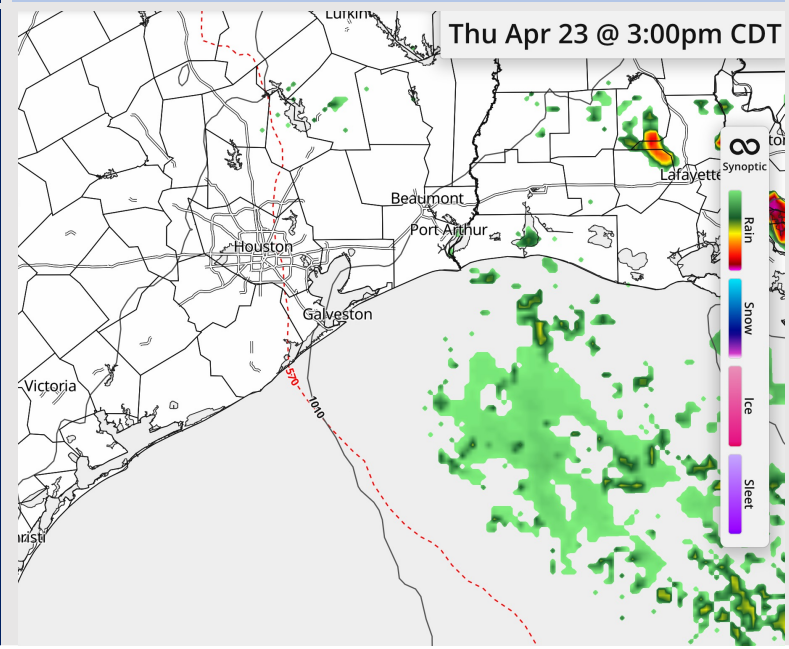
Precip: Dry conditions favored.

Wind: Winds out of the SE throughout the day. **N of Morgan's Point:** Light winds near 3 – 7 kts, increasing to 7 - 15 kts after 9 AM. **S of Morgan's Point:** Winds of 15 - 21 kts. **Gusts up to 20 – 25 kts S of Morgan's Point after 7 PM.**

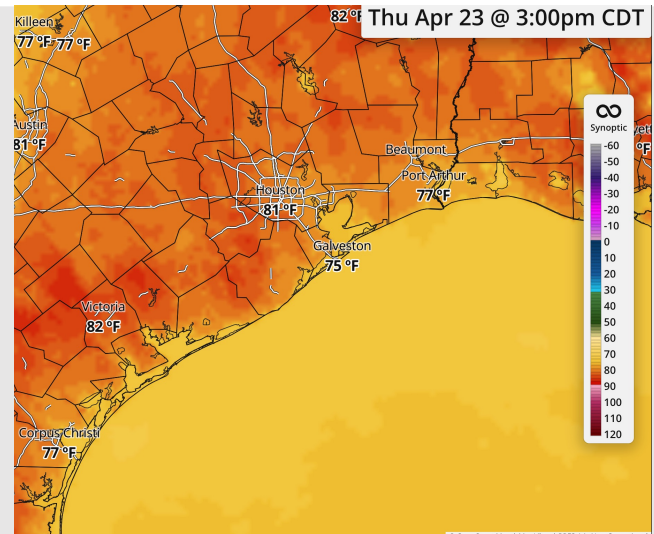
High Temps: **N of Morgan's Point:** Low 80s F. **S of Morgan's Point:** Mid 70s F.

Visibility: Isolated pockets of fog possible from 3 – 8 AM Thursday morning N of Morgan's point.

Precip Image: 3 PM CT



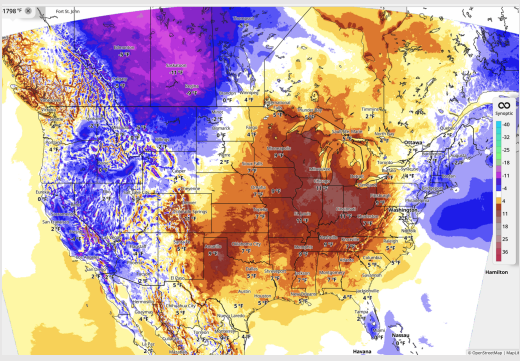
Wind Speed:
9 PM CT



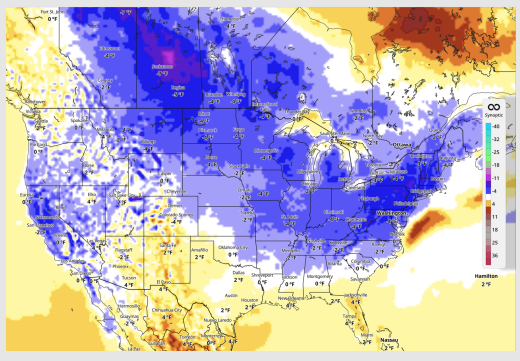
High Temps
Thursday

Houston Pilots: 04/21/2026

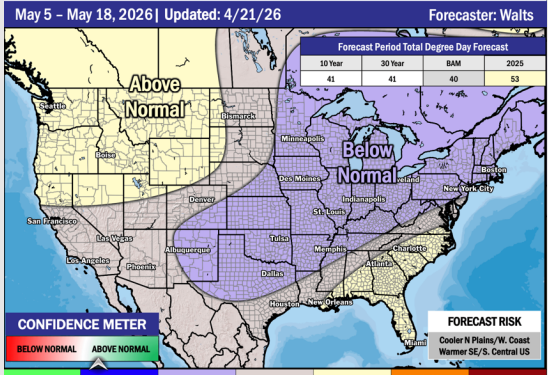
Next 7 Day Temperature Departure



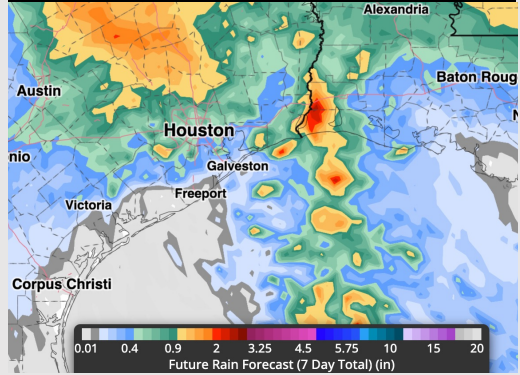
8-14 Day Temperature Departure



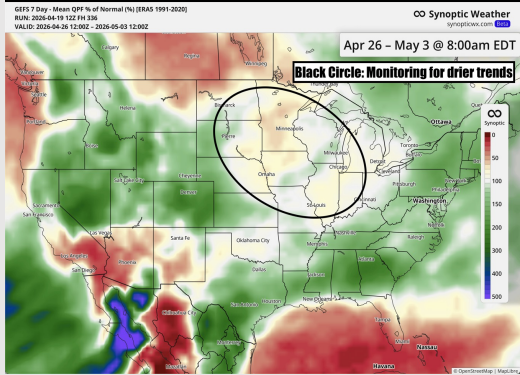
15-30 Day Temperature Departure



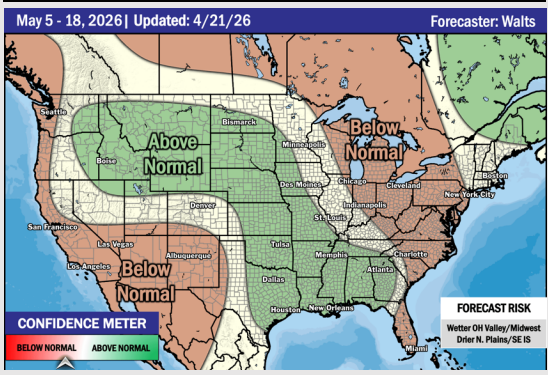
Next 7 Day Total Precipitation



8-14 Day % of Average Precip.



15-30 Day % of Average Precip.



- Near normal temps are favored over the next 7 days, with scattered storm chances through the week.
- Near normal temperatures and above normal rain chances in the Week 2 period.
- Below normal temperatures and below normal rainfall expected through the beginning of May.