

# Houston Pilots Forecast Package

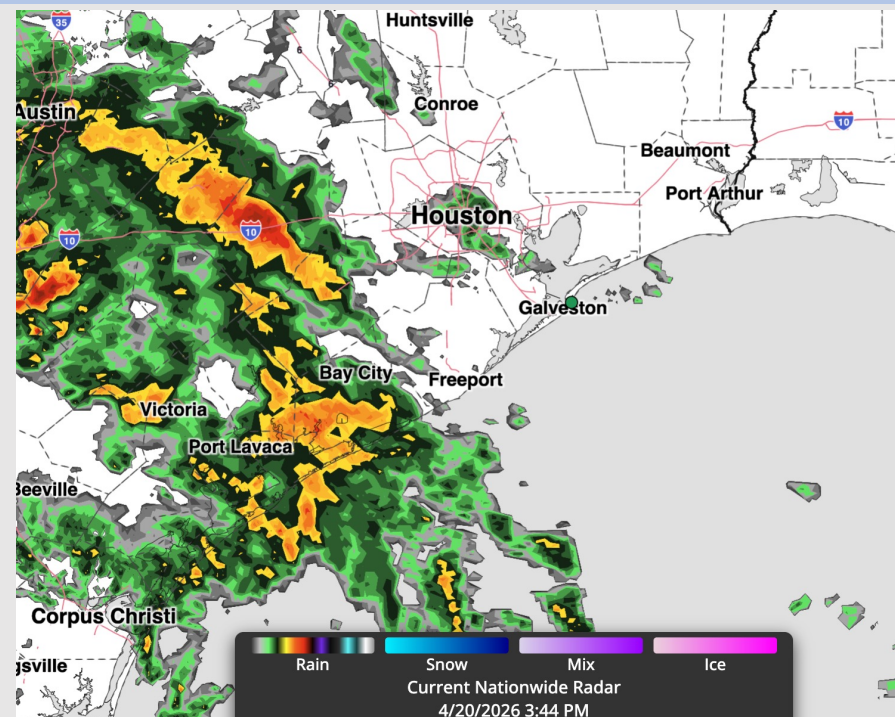


Updated: 2:45 PM CT  
Monday, April 20, 2026

Forecaster: Ratkay

## Weather Headlines

- Wind gusts up to 25 kts possible over the next 72 hours.
- Near-daily rain/storm chances expected over the next 7 days.
- No fog concerns over the next 72 hours.



Current Radar: 2:45 PM CT

As always, please do not hesitate to reach out to us with any forecast questions at [\(317\)-560-8122](tel:317-560-8122). Press 1 for forecast questions.



You can also access real-time forecast updates and 24/7 meteorological chat assistance on your [Clarity](#) app.

# Houston Pilots Tropical Update



## Seasonal Hurricane Outlook

### 2026 Hurricane Season Outlook



Updated: 4/9/26

Forecaster: Waits



2026 Hurricane Season Forecast Stats			
Named Storms	Hurricanes	Major Hurricanes	ACE
9 - 13	3 - 6	1 - 3	BELOW NORMAL

Much Below Normal
Below Normal
Near Normal
Above Normal
Much Above Normal

Graphic to the left represents our favored seasonal outlook for the 2026 Hurricane Season. Conditions expected to be less favorable for tropical development within the Gulf this season.

No notable tropical development is expected over the next 7 days.

# Houston Pilots Visibility Chart (miles)



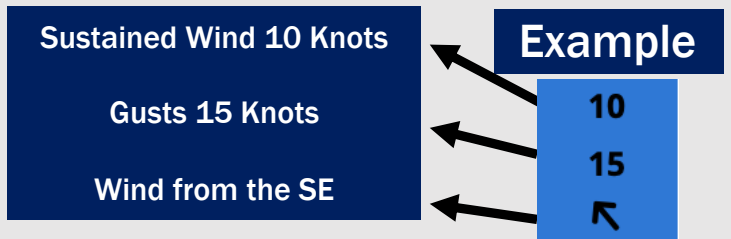
## Forecast Confidence



Visibility	Mon 3 pm	Mon 4 pm	Mon 5 pm	Mon 6 pm	Mon 7 pm	Mon 8 pm	Mon 9 pm	Mon 10 pm	Mon 11 pm	Tue 12 am	Tue 1 am	Tue 2 am	Tue 3 am	Tue 4 am	Tue 5 am	Tue 6 am	Tue 7 am	Tue 8 am	Tue 9 am	Tue 10 am	Tue 11 am	Tue 12 pm	Tue 1 pm	Tue 2 pm
Houston Pilots N - 610 Bridge	10	10	10	10	10	10	10	10	10	10	10	10	10	10	10	10	10	10	10	10	10	10	10	10
Houston Pilots M - Kinder 1	10	10	10	10	10	10	10	10	10	10	10	10	10	10	10	10	10	10	10	10	10	10	10	10
Houston Pilots L - Greens Bayou	10	10	10	10	10	10	10	10	10	10	10	10	10	10	10	10	10	10	10	10	10	10	10	10
Houston Pilots K - Shell Crude	10	10	10	10	10	10	10	10	10	10	10	10	10	10	10	10	10	10	10	10	10	10	10	10
Houston Pilots J - Lynchburg Ferries	10	10	10	10	10	10	10	10	10	10	10	10	10	10	10	10	10	10	10	10	10	10	10	10
Houston Pilots I - Exxon 3	10	10	10	10	10	10	10	10	10	10	10	10	10	10	10	10	10	10	10	10	10	10	10	10
Houston Pilots H - Morgans Point	10	10	10	10	10	10	10	10	10	10	10	10	10	10	10	10	10	10	10	10	10	10	10	10
Houston Pilots G - 75/76	10	10	10	10	10	10	10	10	10	10	10	10	10	10	10	10	10	10	10	10	10	10	10	8
Houston Pilots F - 63/64	10	10	10	10	10	10	10	10	10	10	10	10	10	10	10	10	10	10	10	10	10	10	10	9
Houston Pilots E - 51/52	10	10	10	10	10	10	10	10	10	10	10	10	10	10	10	10	10	10	10	10	10	10	10	10
Houston Pilots D - 37/38	10	10	10	10	10	10	10	10	10	10	10	10	10	10	10	10	10	10	10	10	10	10	10	10
Houston Pilots C - 25/26	10	10	10	10	10	10	10	10	10	10	10	10	10	10	10	10	10	10	10	10	10	10	10	10
Houston Pilots B - 11/12	10	10	10	10	10	10	10	10	10	10	10	10	10	10	10	10	10	10	10	10	10	10	10	10
Houston Pilots A - 1 & 2 Bravo	10	10	10	10	10	10	10	10	10	10	10	10	10	10	10	10	10	10	9	9	10	10	8	10

**NOTE: This is automated data that may/may not agree with the official BAM thinking that's found on the daily slides or special visibility report slides. This data should be used as a guide only**

# Houston Pilots Wind Chart



Wind	Mon 3 pm	Mon 4 pm	Mon 5 pm	Mon 6 pm	Mon 7 pm	Mon 8 pm	Mon 9 pm	Mon 10 pm	Mon 11 pm	Tue 12 am	Tue 1 am	Tue 2 am	Tue 3 am	Tue 4 am	Tue 5 am	Tue 6 am	Tue 7 am	Tue 8 am	Tue 9 am	Tue 10 am	Tue 11 am	Tue 12 pm	Tue 1 pm	Tue 2 pm
Houston Pilots N - 610 Bridge	9 18 ←	9 18 ←	9 18 ←	8 18 ←	8 17 ←	8 15 ←	7 14 ←	6 13 ←	6 13 ←	6 12 ←	5 12 ←	5 12 ←	5 10 ←	5 10 ←	5 10 ←	6 12 ←	6 13 ←	6 13 ←	6 14 ←	7 15 ←	8 16 ←	9 20 ←	10 20 ←	10 21 ←
Houston Pilots M - Kinder 1	9 18 ←	9 18 ←	9 18 ←	8 17 ←	8 16 ←	8 15 ←	7 14 ←	6 13 ←	6 13 ←	6 12 ←	6 12 ←	6 12 ←	5 10 ←	5 10 ←	5 10 ←	6 12 ←	6 12 ←	6 13 ←	6 14 ←	7 15 ←	8 16 ←	9 18 ←	10 20 ←	10 21 ←
Houston Pilots L - Greens Bayou	9 17 ←	9 17 ←	9 18 ←	8 17 ←	8 16 ←	8 15 ←	7 14 ←	6 13 ←	6 13 ←	6 12 ←	6 12 ←	6 12 ←	6 10 ←	6 10 ←	6 10 ←	6 12 ←	6 12 ←	6 13 ←	6 14 ←	7 15 ←	8 16 ←	9 18 ←	10 20 ←	10 20 ←
Houston Pilots K - Shell Crude	10 18 ←	10 17 ←	9 18 ←	9 17 ←	8 16 ←	8 15 ←	7 14 ←	6 14 ←	6 13 ←	6 12 ←	6 13 ←	6 13 ←	6 12 ←	6 12 ←	6 12 ←	6 12 ←	6 13 ←	6 13 ←	7 14 ←	7 15 ←	8 16 ←	9 18 ←	10 20 ←	10 21 ←
Houston Pilots J - Lynchburg Ferries	9 17 ←	9 17 ←	9 18 ←	9 17 ←	8 16 ←	8 15 ←	7 14 ←	6 13 ←	6 13 ←	6 12 ←	6 12 ←	6 10 ←	5 10 ←	5 10 ←	6 10 ←	6 10 ←	6 12 ←	6 13 ←	6 14 ←	7 14 ←	8 16 ←	9 17 ←	10 18 ←	10 20 ←
Houston Pilots I - Exxon 3	12 ←	12 20 ←	12 20 ←	12 20 ←	12 17 ←	10 16 ←	10 16 ←	10 15 ←	9 15 ←	9 15 ←	9 15 ←	9 14 ←	8 14 ←	8 14 ←	8 14 ←	9 14 ←	9 15 ←	9 15 ←	9 15 ←	10 16 ←	10 17 ←	10 18 ←	12 20 ←	13 21 ←
Houston Pilots H - Morgans Point	12 ←	13 20 ←	13 20 ←	13 20 ←	12 18 ←	12 18 ←	10 16 ←	10 16 ←	10 15 ←	10 16 ←	10 16 ←	10 15 ←	10 15 ←	9 15 ←	9 15 ←	9 15 ←	9 15 ←	9 15 ←	10 15 ←	10 16 ←	10 18 ←	12 20 ←	13 21 ←	13 22 ←
Houston Pilots G - 75/76	13 ←	13 22 ←	13 22 ←	14 22 ←	13 21 ←	13 20 ←	13 20 ←	13 18 ←	13 18 ←	13 20 ←	13 18 ←	13 17 ←	13 17 ←	13 17 ←	13 18 ←	13 17 ←	12 17 ←	12 17 ←	13 18 ←	13 18 ←	13 20 ←	13 21 ←	13 22 ←	14 23 ←
Houston Pilots F - 63/64	14 ←	14 23 ←	14 22 ←	14 22 ←	13 21 ←	13 20 ←	13 20 ←	13 18 ←	13 20 ←	13 20 ←	14 20 ←	13 18 ←	13 18 ←	13 18 ←	13 18 ←	13 17 ←	13 18 ←	13 18 ←	13 18 ←	13 18 ←	13 20 ←	14 22 ←	14 23 ←	15 24 ←
Houston Pilots E - 51/52	15 ←	15 23 ←	14 22 ←	14 22 ←	14 21 ←	13 20 ←	14 20 ←	14 20 ←	14 21 ←	15 21 ←	15 21 ←	15 21 ←	14 20 ←	14 20 ←	14 20 ←	14 20 ←	13 20 ←	13 18 ←	14 20 ←	14 20 ←	14 21 ←	15 22 ←	15 23 ←	15 24 ←
Houston Pilots D - 37/38	15 ←	15 23 ←	14 22 ←	14 22 ←	14 21 ←	13 20 ←	14 20 ←	14 20 ←	15 21 ←	15 21 ←	15 21 ←	15 21 ←	14 20 ←	14 20 ←	14 20 ←	14 20 ←	14 20 ←	13 20 ←	14 20 ←	14 21 ←	15 21 ←	15 22 ←	15 23 ←	15 24 ←
Houston Pilots C - 25/26	15 ←	15 23 ←	14 22 ←	14 21 ←	14 21 ←	13 20 ←	14 20 ←	14 21 ←	15 21 ←	15 21 ←	15 21 ←	15 21 ←	14 20 ←	14 20 ←	14 20 ←	14 20 ←	14 20 ←	13 20 ←	13 20 ←	14 21 ←	14 21 ←	15 22 ←	15 23 ←	15 24 ←
Houston Pilots B - 11/12	15 ←	15 22 ←	14 21 ←	14 20 ←	13 20 ←	13 20 ←	13 20 ←	13 20 ←	13 21 ←	14 20 ←	14 20 ←	13 20 ←	13 20 ←	13 20 ←	13 20 ←	13 20 ←	13 20 ←	13 18 ←	13 18 ←	13 18 ←	13 20 ←	14 21 ←	14 22 ←	15 23 ←
Houston Pilots A - 1 & 2 Bravo	15 ←	15 22 ←	14 21 ←	15 21 ←	15 21 ←	15 21 ←	15 21 ←	15 22 ←	15 23 ←	16 23 ←	15 23 ←	15 22 ←	15 22 ←	15 22 ←	15 22 ←	15 21 ←	15 21 ←	14 20 ←	15 21 ←	15 21 ←	15 22 ←	15 23 ←	15 23 ←	15 23 ←

**NOTE: This is automated data that may/may not agree with the official BAM thinking that's found on the daily slides. This data should be used as a guide only.**

# Houston Pilots: MON. 04/20/2026



## Forecast Discussion

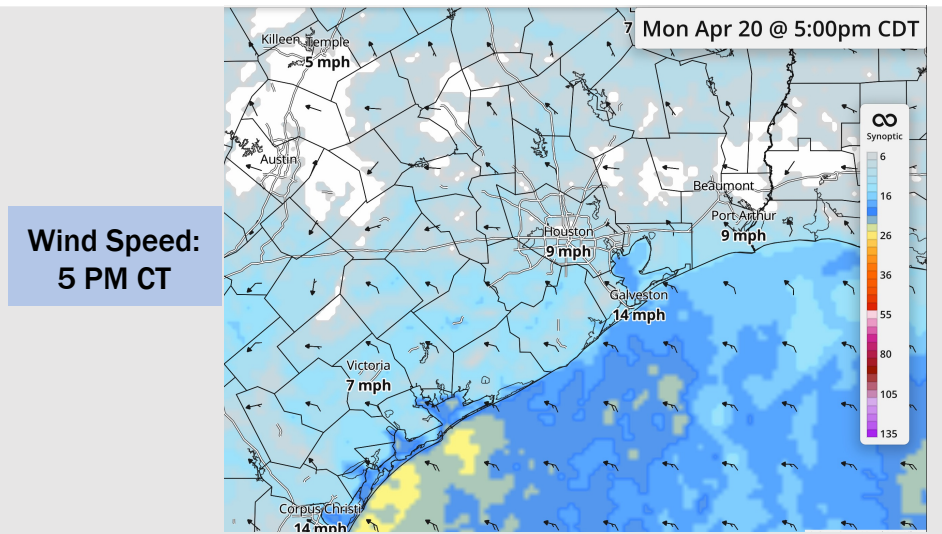
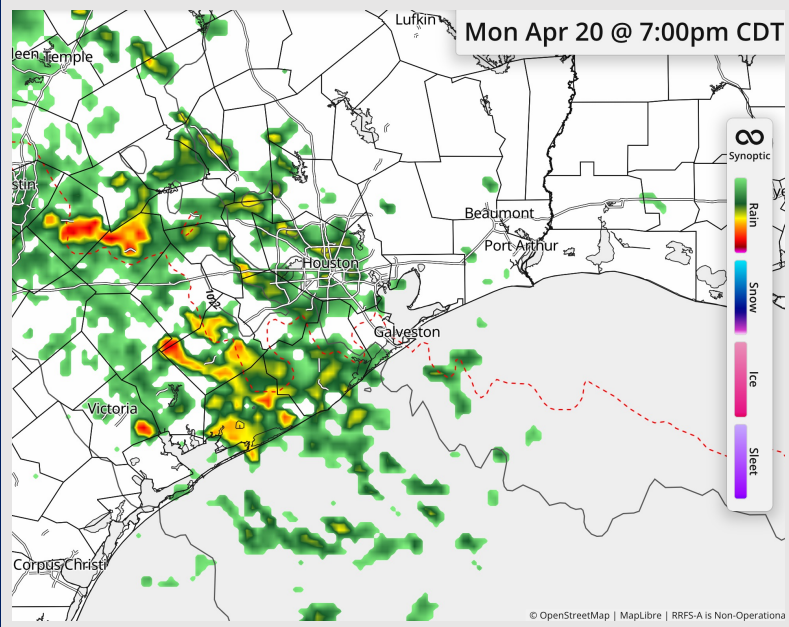
## Precip Image: 7 PM CT

**Precip:** A few pockets of drizzle continue this evening.

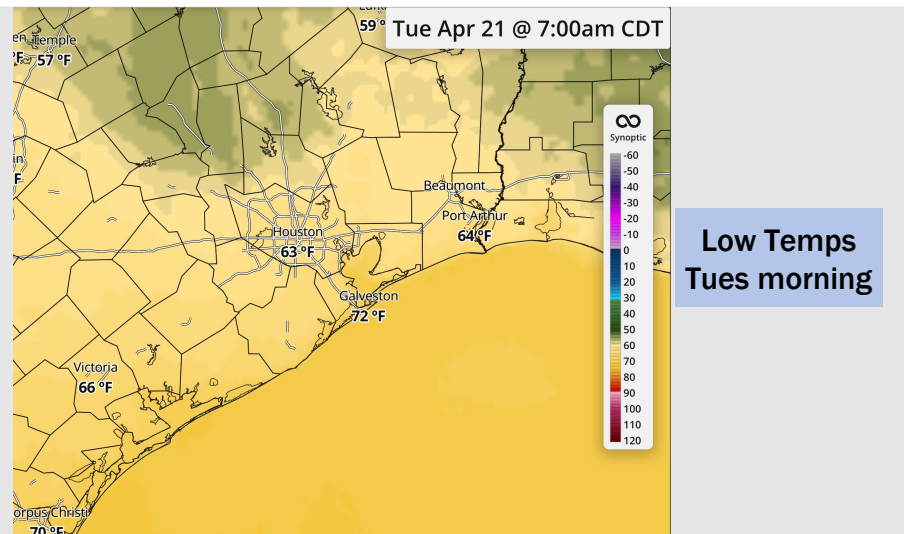
**Wind:** Winds out of the ESE throughout the remainder of the evening. **N of Morgan's Point:** Winds of 5 - 10 kts. **S of Morgan's Point:** Winds of 15 - 20 kts. **Gusts up to 20 - 25 kts S of Morgan's Point this evening.**

**Low Temps:** **N of Morgan's Point:** Low 60s F. **S of Morgan's Point:** Low 70s F.

**Visibility:** No visibility concerns for today.



**Wind Speed:**  
5 PM CT



**Low Temps**  
Tues morning

# Houston Pilots: TUE. 04/21/2026



## Forecast Discussion

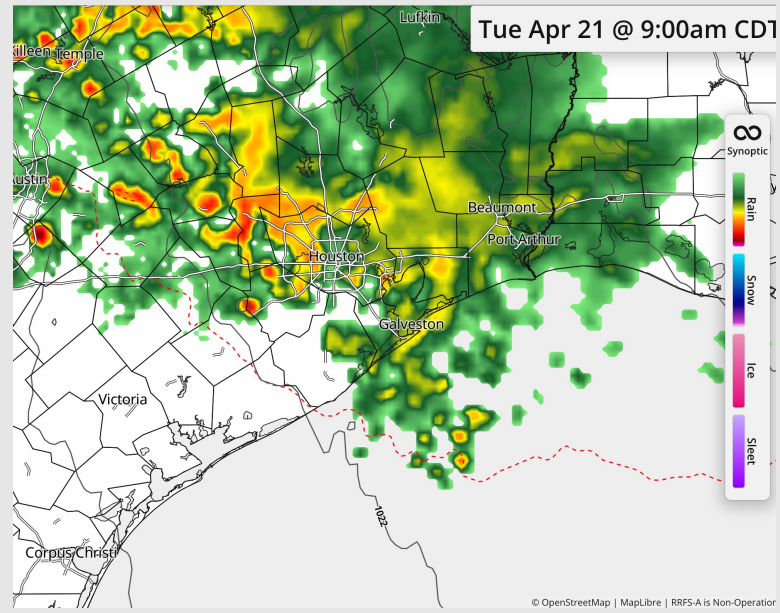
**Precip:** Scattered showers and storms possible through 3 PM for all stations. No severe weather expected, but lightning will be possible with storms. Scattered pockets of drizzle possible after 4PM.

**Wind:** Winds out of the ESE throughout the day. **N of Morgan's Point:** Winds of 5 – 10 kts. **S of Morgan's Point:** Winds of 15 – 20 kts. **Gusts up to 20 – 25 kts throughout the day for Stations S of Morgan's Point.**

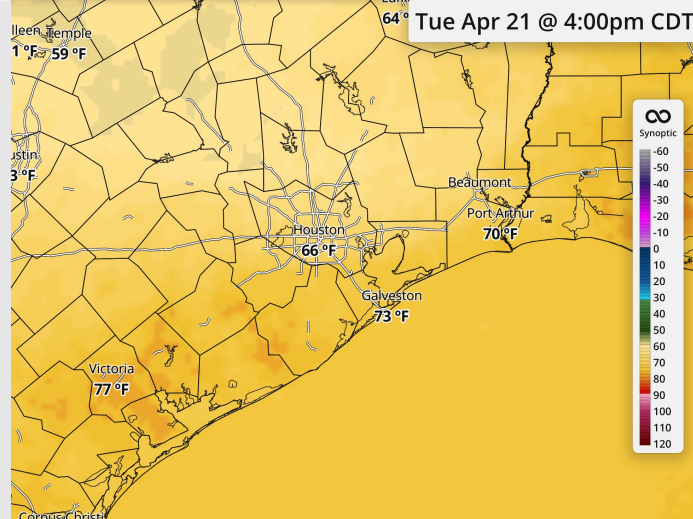
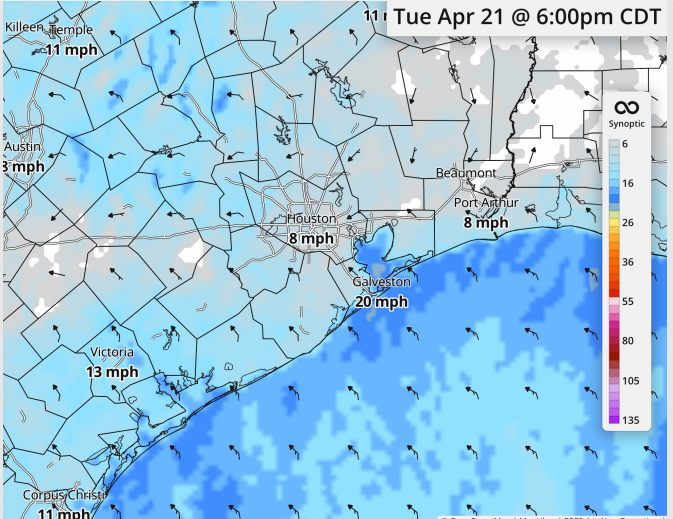
**High Temps:** **N of Morgan's Point:** High 60s F. **S of Morgan's Point:** Low 70s F.

**Visibility:** Visibility may be reduced by heavy downpours.

## Precip Image: 9 AM CT



**Wind Speed:  
6 PM CT**



**High Temps  
Tuesday**

# Houston Pilots: WED. 04/22/2026

## Forecast Discussion

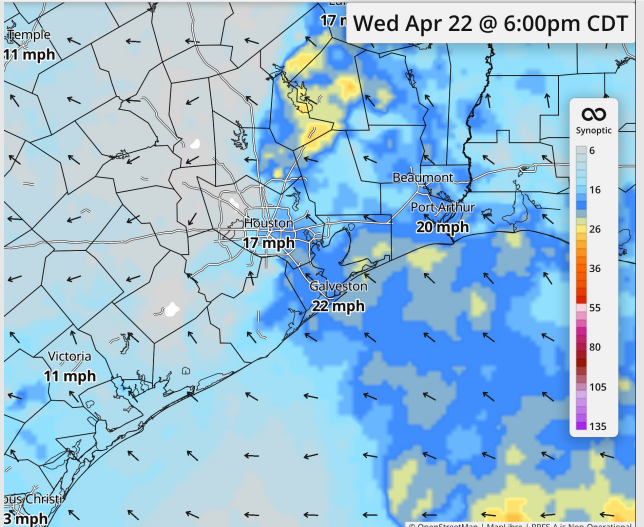
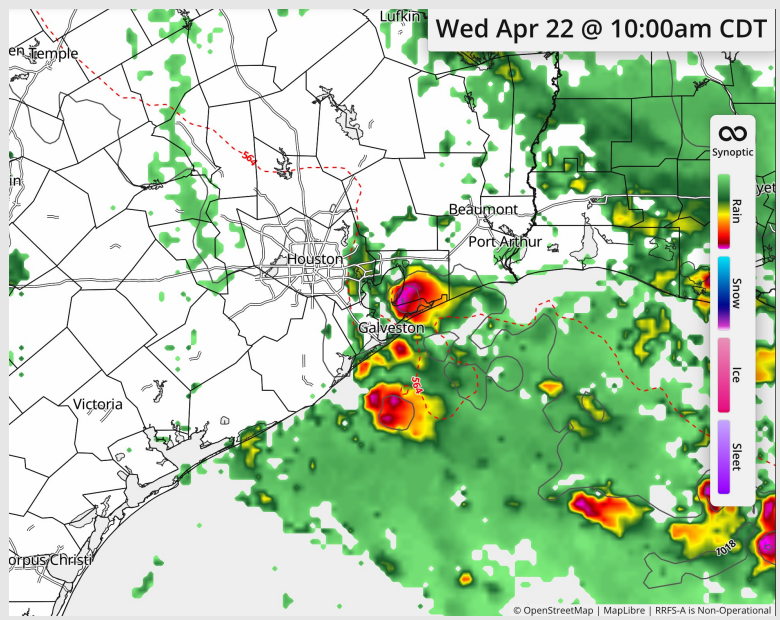
**Precip:** Scattered showers and storms possible from 4 AM - 7 PM. A few stronger storms possible after 9 AM, with small hail and gusts up to 35 kts.

**Wind:** Winds out of the SE. **N of Morgan's Point:** Winds of 3 – 9 kts through the day. **S of Morgan's Point:** Winds of 15 – 20 kts through the day. **Non-thunderstorm gusts up to 20 – 25 kts for Stations S of Morgan's Point after 4 PM.**

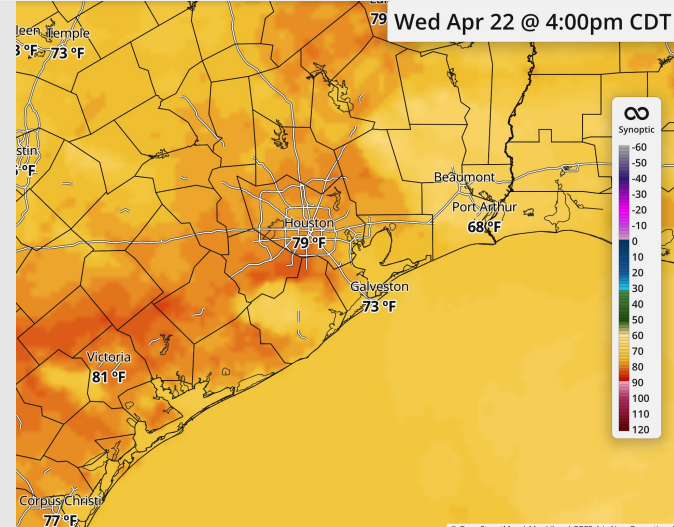
**High Temps:** **N of Morgan's Point:** High 70s F. **S of Morgan's Point:** Mid 70s F

**Visibility:** No fog concerns for Wednesday, however visibilities can be reduced beneath storms.

## Precip Image: 10 AM CT

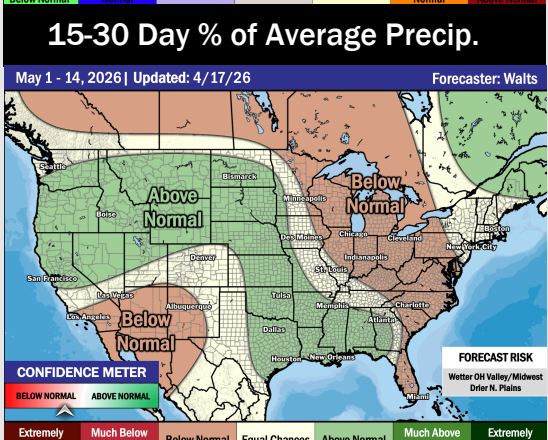
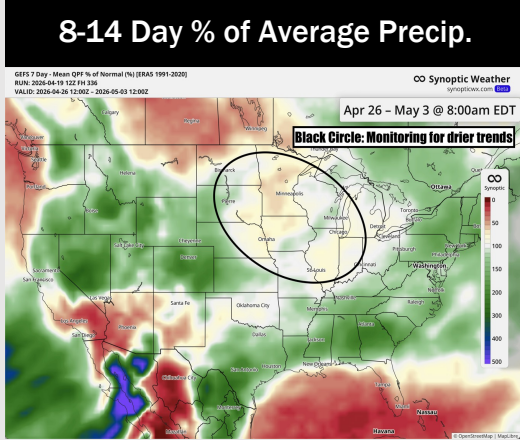
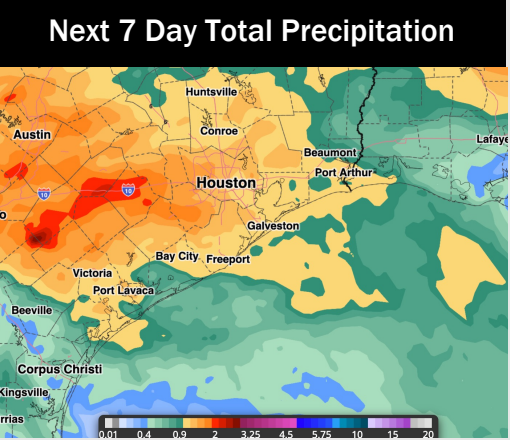
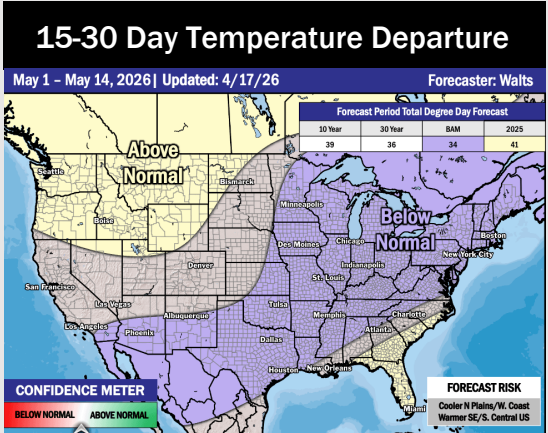
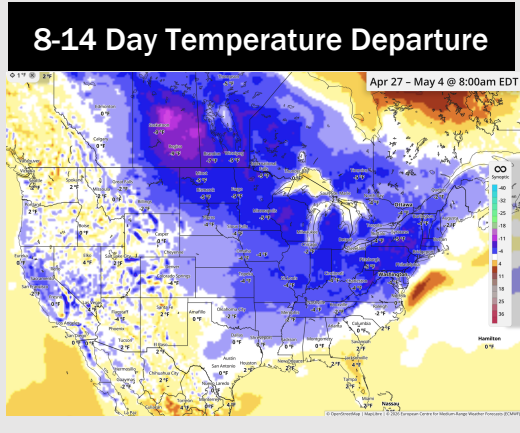
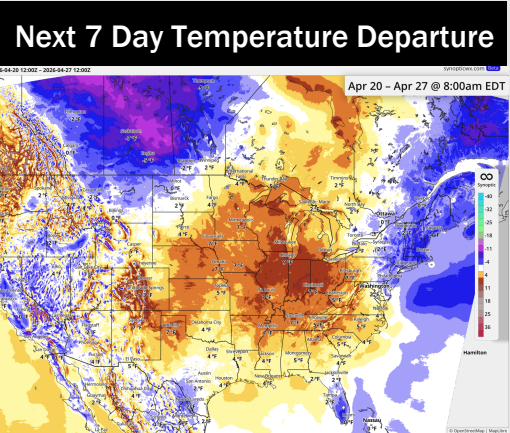


**Wind Speed:**  
6 PM CT



**High Temps**  
**Wednesday**

# Houston Pilots: 04/20/2026



- Near normal temps are favored over the next 7 days, with scattered storm chances through the week.
- Near normal temperatures and above normal rain chances in the Week 2 period.
- Below normal temperatures and below normal rainfall expected through the beginning of May.