

# Houston Pilots Forecast Package



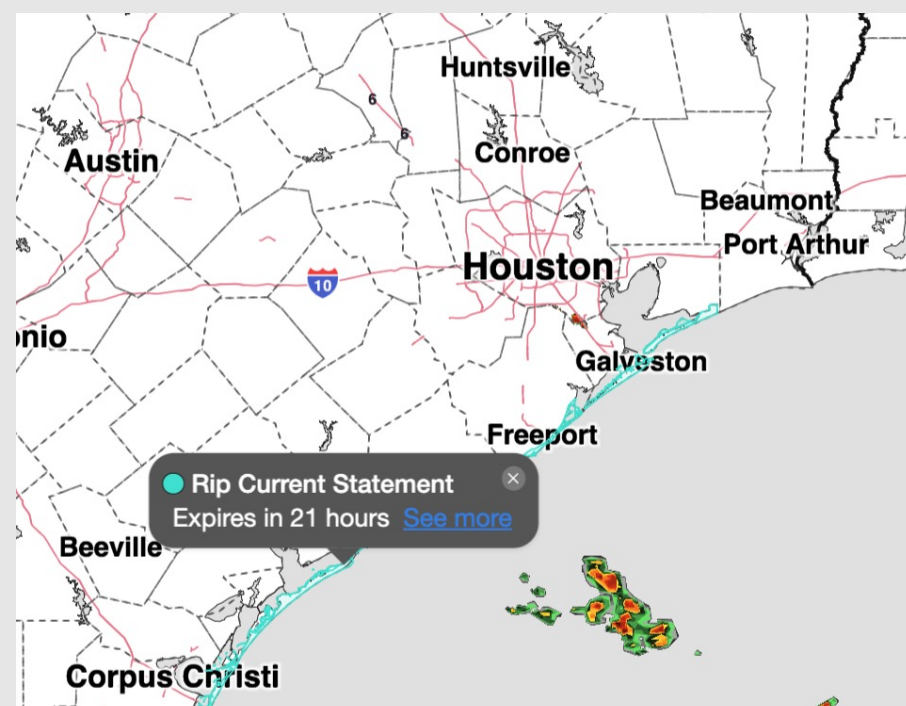
Updated: 10:05 PM CT

Friday, April 10, 2026

Forecaster: Alexis Ratkay

## Weather Headlines

- A few showers/storms SAT and SUN afternoon, then more widespread showers/storms MON AM. No severe risks expected.
- **Gusts of up to 20-25 kts possible SAT, SUN, and MON PM.**
- No fog concerns over the next 72 hours.



**Current Radar: 10:05 PM CT**

As always, please do not hesitate to reach out to us with any forecast questions at [\(317\)-560-8122](tel:317-560-8122). Press 1 for forecast questions.



You can also access real-time forecast updates and 24/7 meteorological chat assistance on your [Clarity](#) app.

# Houston Pilots Tropical Update



## Seasonal Hurricane Outlook

### 2026 Hurricane Season Outlook



Updated: 4/9/26

Forecaster: Waits



2026 Hurricane Season Forecast Stats			
Named Storms	Hurricanes	Major Hurricanes	ACE
9 - 13	3 - 6	1 - 3	BELOW NORMAL

Much Below Normal
Below Normal
Near Normal
Above Normal
Much Above Normal

Graphic to the left represents our favored seasonal outlook for the 2026 Hurricane Season. Conditions expected to be less favorable for tropical development within the Gulf this season.

No notable tropical development is expected over the next 7 days.

# Houston Pilots Visibility Chart (miles)



## Forecast Confidence



Visibility	Fri 10 pm	Fri 11 pm	Sat 12 am	Sat 1 am	Sat 2 am	Sat 3 am	Sat 4 am	Sat 5 am	Sat 6 am	Sat 7 am	Sat 8 am	Sat 9 am	Sat 10 am	Sat 11 am	Sat 12 pm	Sat 1 pm	Sat 2 pm	Sat 3 pm	Sat 4 pm	Sat 5 pm	Sat 6 pm	Sat 7 pm	Sat 8 pm	Sat 9 pm
Houston Pilots N - 610 Bridge	10	10	9	7.9	6.9	5.9	5.9	4.9	5.9	6.9	6.9	4.9	6.9	10	10	10	10	10	10	10	10	10	10	10
Houston Pilots M - Kinder 1	10	10	7.9	6.9	6.9	5.9	5.9	4.9	5.9	5.9	5.9	4.9	6.9	10	10	10	10	10	10	10	10	10	10	10
Houston Pilots L - Greens Bayou	10	10	6.9	6.9	5.9	5.9	5.9	5.9	5.9	5.9	5.9	4.9	6.9	10	10	10	10	10	10	10	10	10	10	10
Houston Pilots K - Shell Crude	10	10	6.9	6.9	5.9	4.9	5.9	4.9	5.9	5.9	5.9	4.9	6.9	10	10	10	10	10	10	10	10	10	10	10
Houston Pilots J - Lynchburg Ferries	10	10	6.9	6.9	5.9	5.9	5.9	5.9	5.9	6.9	5.9	4.9	6.9	10	10	10	10	10	10	10	10	10	10	10
Houston Pilots I - Exxon 3	10	9	6.9	6.9	5.9	4.9	5.9	4.9	5.9	6.9	6.9	4.9	6.9	10	10	10	10	10	10	10	10	10	10	10
Houston Pilots H - Morgans Point	10	9	6.9	5.9	4.9	4.9	4.9	4.9	5.9	6.9	6.9	4.9	6.9	10	10	10	10	10	10	10	10	10	10	10
Houston Pilots G - 75/76	7.9	6.9	6.9	6.9	6.9	6.9	6.9	6.9	6.9	7.9	7.9	4.9	6.9	7.9	9	10	10	9	6.9	6.9	6.9	6.9	5.9	9
Houston Pilots F - 63/64	6.9	6.9	6.9	6.9	6.9	6.9	6.9	6.9	6.9	7.9	7.9	4.9	6.9	7.9	9	9	10	7.9	6.9	5.9	6.9	6.9	5.9	9
Houston Pilots E - 51/52	6.9	6.9	6.9	6.9	6.9	6.9	6.9	5.9	6.9	6.9	7.9	4.9	6.9	6.9	7.9	7.9	9	6.9	6.9	5.9	5.9	5.9	4.9	9
Houston Pilots D - 37/38	6.9	5.9	6.9	6.9	6.9	6.9	6.9	5.9	6.9	6.9	7.9	4.9	6.9	6.9	7.9	7.9	9	6.9	6.9	4.9	5.9	5.9	4.9	9
Houston Pilots C - 25/26	6.9	5.9	6.9	6.9	6.9	6.9	6.9	5.9	6.9	6.9	7.9	4.9	6.9	6.9	6.9	6.9	6.9	6.9	6.9	4.9	5.9	4.9	4.9	9
Houston Pilots B - 11/12	5.9	5.9	5.9	6.9	6.9	6.9	6.9	5.9	6.9	6.9	6.9	4.9	6.9	6.9	6.9	6.9	6.9	6.9	6.9	4.9	4.9	4.9	4.9	9
Houston Pilots A - 1 & 2 Bravo	4.9	4.9	4.9	4.9	4.9	4.9	4.9	4.9	5.9	6.9	6.9	4.9	5.9	5.9	5.9	6.9	6.9	5.9	5.9	4.9	4.9	4.9	4.9	9

**NOTE: This is automated data that may/may not agree with the official BAM thinking that's found on the daily slides or special visibility report slides. This data should be used as a guide only**

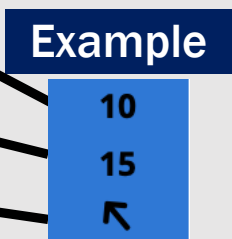
# Houston Pilots Wind Chart



## Forecast Confidence



Sustained Wind 10 Knots  
Gusts 15 Knots  
Wind from the SE



Wind	Fri 10 pm	Fri 11 pm	Sat 12 am	Sat 1 am	Sat 2 am	Sat 3 am	Sat 4 am	Sat 5 am	Sat 6 am	Sat 7 am	Sat 8 am	Sat 9 am	Sat 10 am	Sat 11 am	Sat 12 pm	Sat 1 pm	Sat 2 pm	Sat 3 pm	Sat 4 pm	Sat 5 pm	Sat 6 pm	Sat 7 pm	Sat 8 pm	Sat 9 pm	
Houston Pilots N - 610 Bridge	8 17	8 16	8 16	7 15	7 15	6 14	6 14	6 14	6 14	6 15	6 15	7 15	8 16	9 17	10 21	12 22	13 23	13 24	13 25	14 26	15 26	15 28	14 26	13 25	
Houston Pilots M - Kinder 1	8 17	8 16	8 16	7 15	7 15	6 14	6 14	6 14	6 14	6 15	6 15	8 15	8 16	9 17	10 21	12 22	13 23	13 24	13 25	14 25	15 26	15 28	13 26	13 25	
Houston Pilots L - Greens Bayou	8 17	8 16	8 16	7 15	7 15	7 14	6 14	7 14	7 14	7 15	7 15	8 15	8 16	10 17	10 20	12 22	13 22	13 24	13 25	14 25	14 26	15 26	15 26	14 26	13 25
Houston Pilots K - Shell Crude	8 17	8 16	8 16	8 15	7 15	7 15	7 14	7 15	7 15	7 15	7 15	8 15	8 17	10 18	10 20	13 22	13 23	13 24	14 25	14 25	15 26	15 26	14 26	13 25	
Houston Pilots J - Lynchburg Ferries	8 17	8 16	8 15	7 15	7 14	6 14	6 13	6 14	6 14	6 14	6 14	7 15	8 16	9 17	10 20	12 22	13 22	13 24	14 24	14 25	15 26	15 26	15 26	13 25	13 25
Houston Pilots I - Exxon 3	12 18	10 17	10 17	10 16	10 16	10 16	10 16	10 16	10 16	10 15	10 15	10 16	10 17	12 18	13 20	13 22	14 23	15 24	15 25	16 26	17 26	17 25	17 25	16 25	16 25
Houston Pilots H - Morgans Point	13 20	12 18	12 18	10 18	10 17	10 17	10 17	10 16	10 17	10 16	10 16	10 17	12 18	12 18	13 21	13 22	14 23	15 24	15 26	16 26	17 26	17 26	17 26	17 26	17 26
Houston Pilots G - 75/76	15 22	14 21	14 21	13 20	13 20	13 20	13 20	13 20	13 18	13 20	13 20	14 21	14 21	14 21	14 22	15 24	15 24	16 26	17 28	17 28	18 29	18 29	18 28	18 28	18 28
Houston Pilots F - 63/64	15 22	14 22	14 21	14 20	14 20	14 20	14 21	13 20	14 20	13 20	13 20	14 21	14 21	14 21	15 22	15 24	15 25	16 26	17 28	17 28	18 28	18 28	18 26	18 26	18 26
Houston Pilots E - 51/52	15 22	15 22	15 21	15 21	14 20	14 20	14 21	14 20	14 20	14 21	14 21	15 21	15 22	15 22	15 23	15 25	16 25	17 26	17 28	17 28	17 28	18 28	18 28	18 26	18 26
Houston Pilots D - 37/38	15 22	15 22	15 21	15 21	14 20	14 20	14 21	14 20	14 20	14 21	14 21	15 21	15 22	15 22	15 23	15 24	16 24	16 25	17 28	17 28	17 28	18 28	18 28	18 26	18 26
Houston Pilots C - 25/26	15 22	14 21	14 21	14 21	14 20	14 20	14 21	14 20	14 20	14 21	14 21	14 21	15 22	15 22	15 23	15 23	16 24	16 25	17 26	17 26	17 26	17 26	17 26	17 26	18 26
Houston Pilots B - 11/12	14 21	13 21	13 20	13 20	13 20	13 20	13 20	13 20	13 20	13 20	13 20	13 20	14 21	14 21	15 22	15 22	15 23	16 24	16 24	17 24	17 24	17 25	17 24	17 25	17 25
Houston Pilots A - 1 & 2 Bravo	15 22	15 22	15 22	15 22	15 21	15 21	15 22	15 21	15 22	15 22	15 22	15 22	15 22	15 22	15 22	15 23	15 23	15 23	16 23	16 24	16 24	17 25	17 25	18 26	18 26

**NOTE: This is automated data that may/may not agree with the official BAM thinking that's found on the daily slides. This data should be used as a guide only.**

# Houston Pilots: SAT. 04/11/2026



## Forecast Discussion

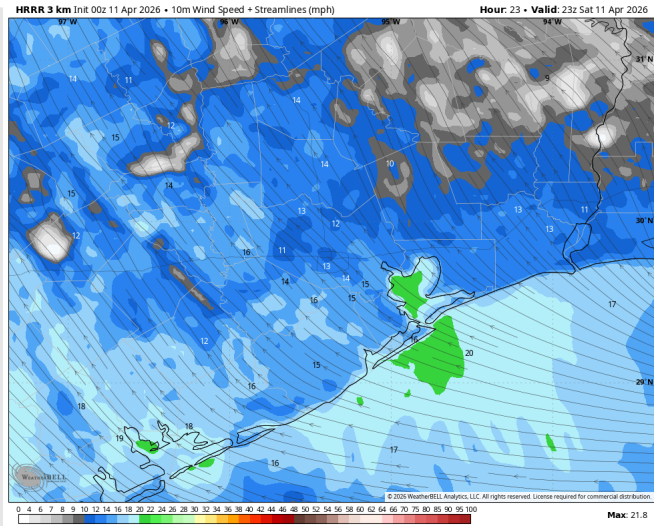
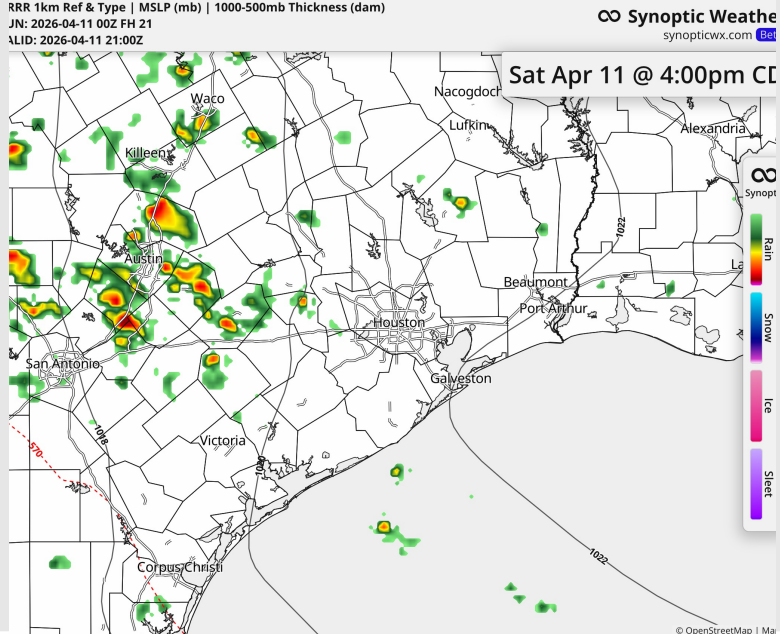
**Precip:** A few storms possible once again for all stations after 1PM. Showers/storms move out by 6 PM then dry conditions favored thereafter.

**Wind:** Winds out of the SE for the entire day. **N of Morgan's Point:** Winds of 6 – 11 kts, increasing to 11 – 15 kts after 2 PM. **S of Morgan's Point:** Winds of 10 - 16 kts, increasing to 15 – 20 kts after 2 PM. **Gusts up to 25 kts possible from 4-9 PM.**

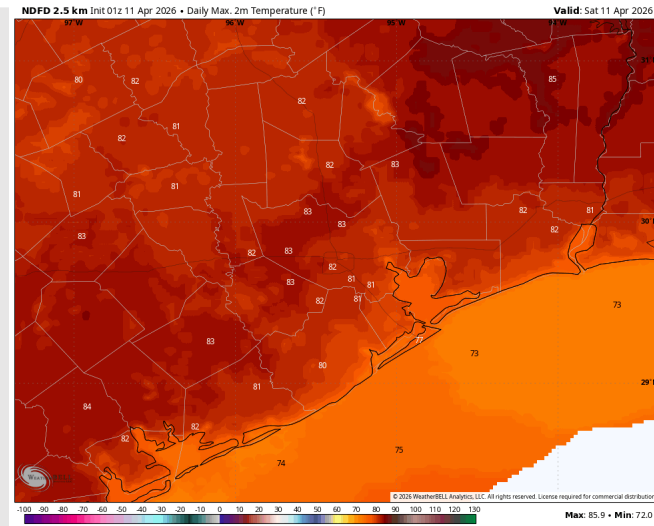
**High Temps:** **N of Morgan's Point:** Low 80s F. **S of Morgan's Point:** Mid 70s F.

**Visibility:** No visibility concerns for today.

## Precip Image: 4 PM CT



Wind Speed:  
6 PM CT



High Temps  
Today

# Houston Pilots: SUN. 04/12/2026

## Forecast Discussion

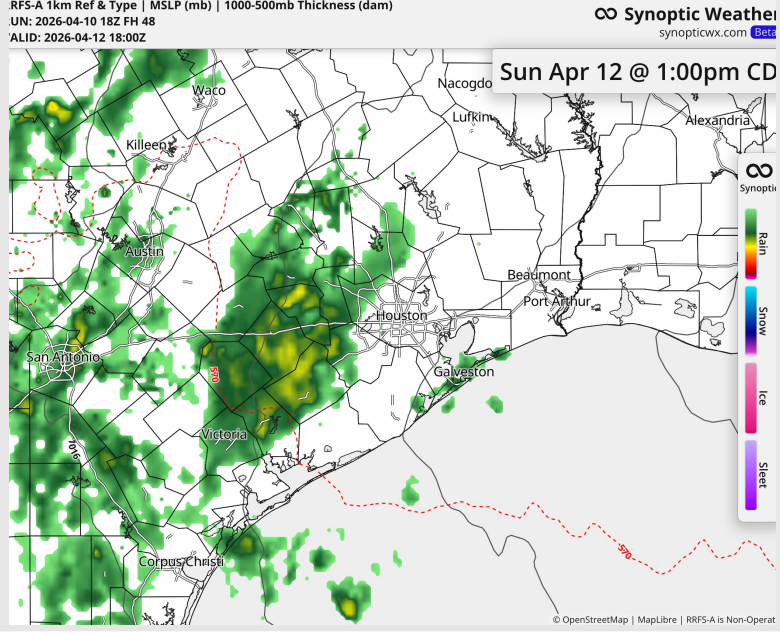
**Precip:** A few light showers possible from 1-6 PM, otherwise dry.

**Wind:** Winds out of the SE for the entire day. **N of Morgan's Point:** Winds of 8 – 14 kts, decreasing to 5 - 10 kts after 6PM. **S of Morgan's Point:** Winds of 14 – 19 kts. **Gusts of up to 25 kts possible from 12-6 PM.**

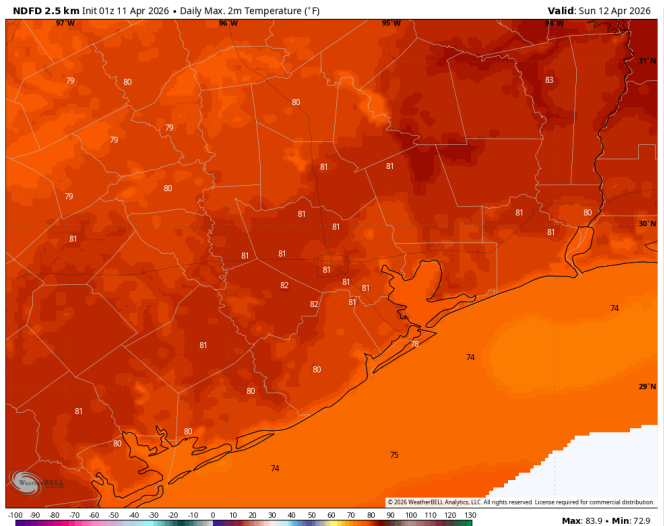
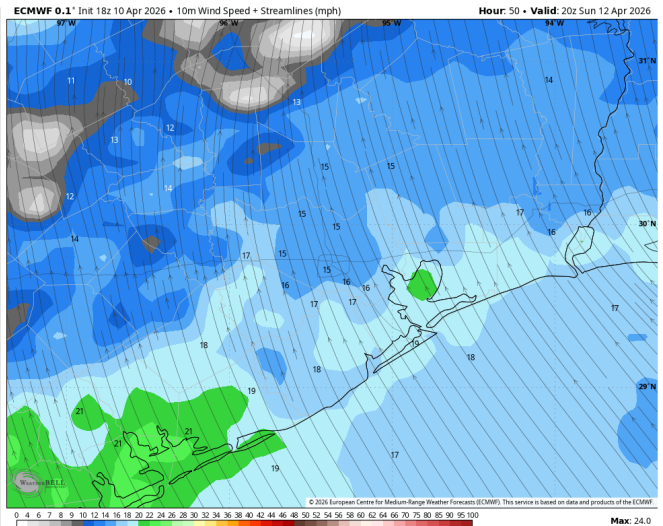
**High Temps:** **N of Morgan's Point:** Low 80s F. **S of Morgan's Point:** Mid 70s F.

**Visibility:** No visibility concerns for Sunday.

## Precip Image: 1 PM CT



**Wind Speed:**  
3 PM CT



**High Temps**  
**Sunday**

# Houston Pilots: MON. 04/13/2026



## Forecast Discussion

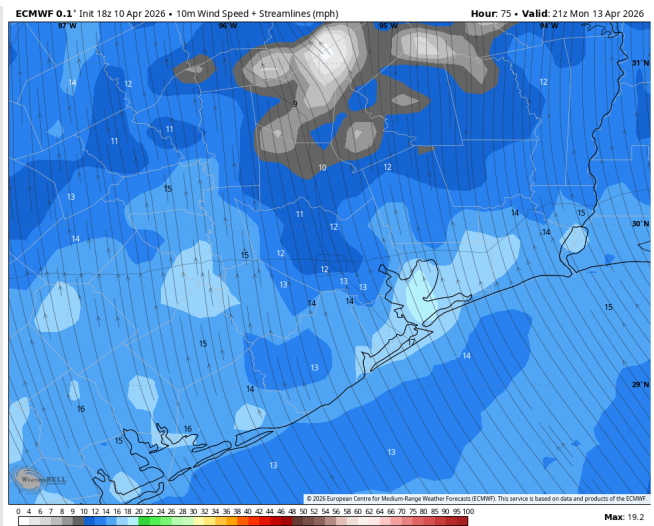
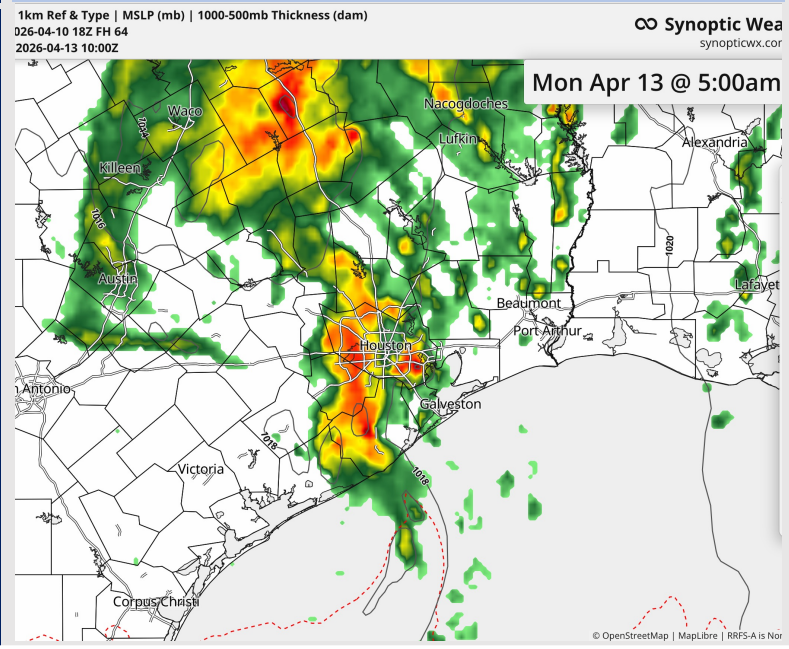
**Precip:** Widespread showers/storms from 12-6 AM, then scattered showers until 4 PM.

**Wind:** Winds out of the SE for the rest of the evening. **N of Morgan's Point:** Winds of 5 - 10 kts. **S of Morgan's Point:** Winds of 7 - 13 kts, increasing to 10 - 16 kts after 11 AM. **Gusts up to 25 kts from 11 AM - 5 PM.**

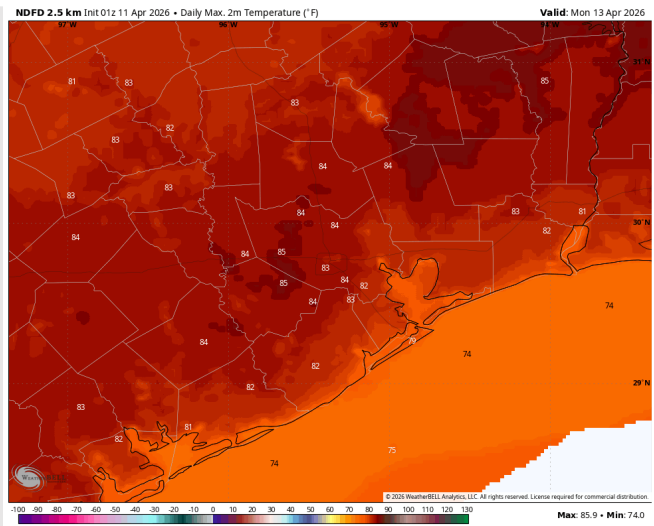
**High Temps:** **N of Morgan's Point:** Mid 80s F. **S of Morgan's Point:** Upper 70s F.

**Visibility:** No visibility concerns for Monday.

## Precip Image: 5 AM CT

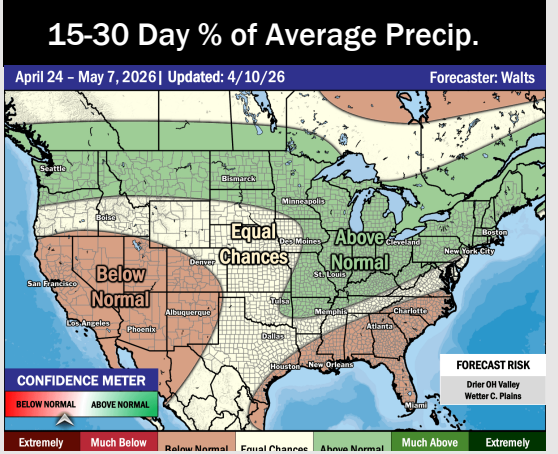
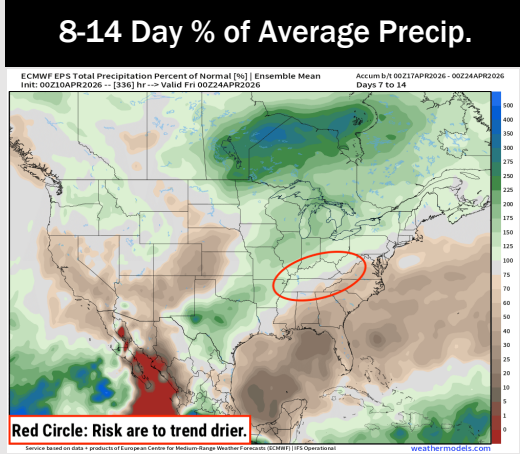
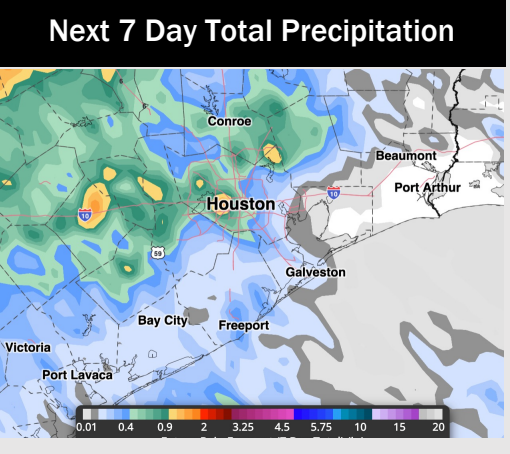
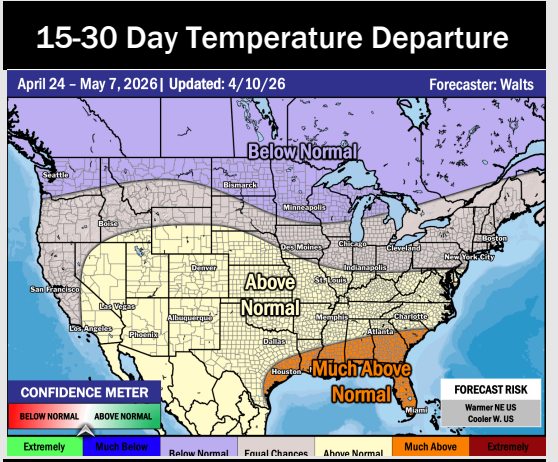
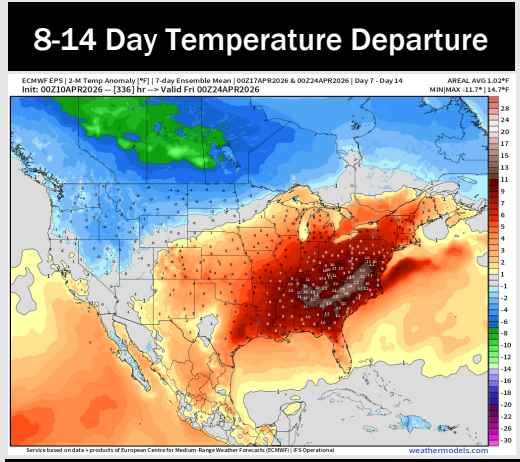
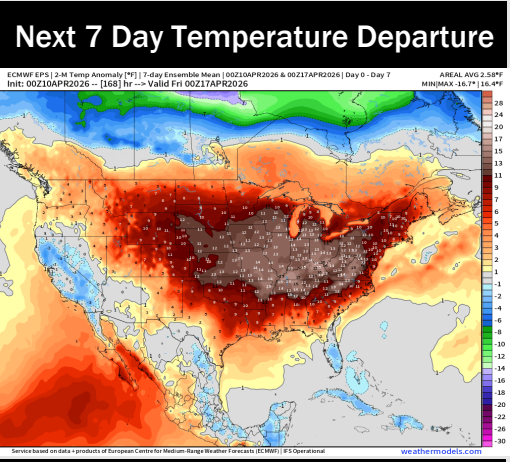


Wind Speed:  
4 PM CT



High Temps  
Monday

# Houston Pilots: 04/11/2026



- Above normal temps are favored over the next 7 days, with scattered storm chances through the week.
- Above normal temperatures and near normal rain chances in the Week 2 period.
- Above normal temperatures and below normal rainfall expected for the last week of April into the first week of May.