

Houston Pilots Forecast Package

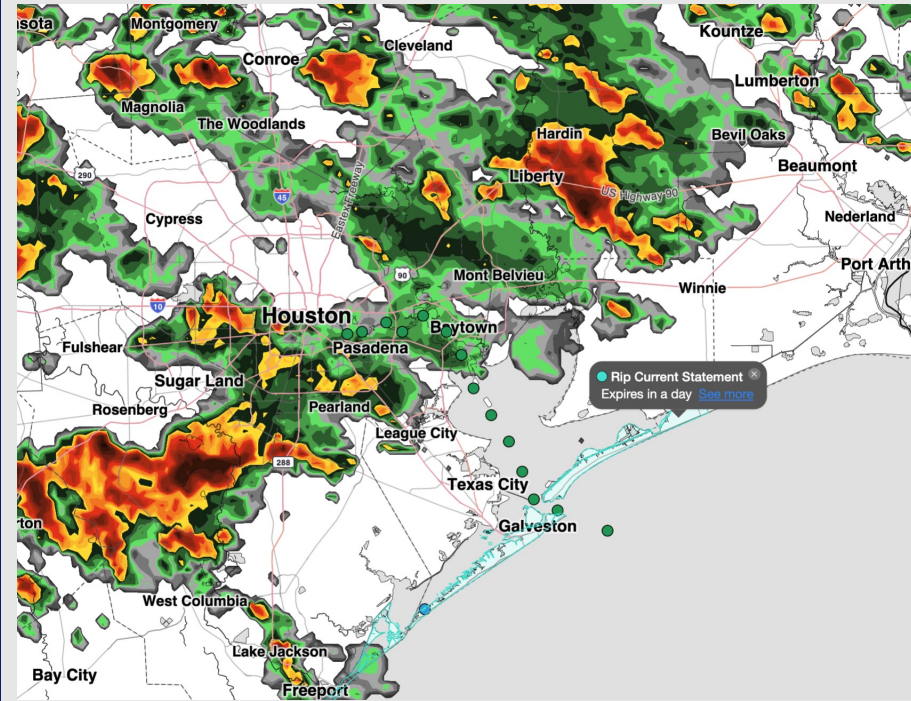


Updated: 1:55 PM CT
Friday, April 10, 2026

Forecaster: John Kemper

Weather Headlines

- Scattered storms to continue through the evening. No severe risks expected
- **Gusts of up to 20-25 kts possible SAT and SUN PM.**
- No fog concerns over the next 72 hours.



Current Radar: 1:50 PM CT

As always, please do not hesitate to reach out to us with any forecast questions at [\(317\)-560-8122](tel:317-560-8122). Press 1 for forecast questions.



You can also access real-time forecast updates and 24/7 meteorological chat assistance on your [Clarity](#) app.

Houston Pilots Tropical Update



Seasonal Hurricane Outlook

2026 Hurricane Season Outlook



Updated: 4/9/26

Forecaster: Waits



2026 Hurricane Season Forecast Stats			
Named Storms	Hurricanes	Major Hurricanes	ACE
9 - 13	3 - 6	1 - 3	BELOW NORMAL

Much Below Normal
Below Normal
Near Normal
Above Normal
Much Above Normal

Graphic to the left represents our favored seasonal outlook for the 2026 Hurricane Season. Conditions expected to be less favorable for tropical development within the Gulf this season.

No notable tropical development is expected over the next 7 days.

Houston Pilots Visibility Chart (miles)



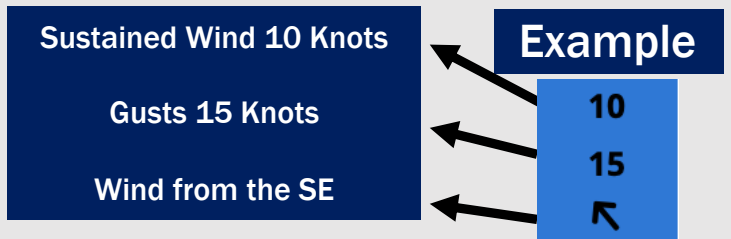
Forecast Confidence



Visibility	Fri 3 pm	Fri 4 pm	Fri 5 pm	Fri 6 pm	Fri 7 pm	Fri 8 pm	Fri 9 pm	Fri 10 pm	Fri 11 pm	Sat 12 am	Sat 1 am	Sat 2 am	Sat 3 am	Sat 4 am	Sat 5 am	Sat 6 am	Sat 7 am	Sat 8 am	Sat 9 am	Sat 10 am	Sat 11 am	Sat 12 pm	Sat 1 pm	Sat 2 pm
Houston Pilots N - 610 Bridge	10	10	10	10	10	10	10	10	10	10	10	10	10	10	7.9	9	9	6.9	6.9	9	9	10	10	10
Houston Pilots M - Kinder 1	10	10	10	10	10	10	10	10	10	10	10	10	10	10	7.9	9	9	6.9	6.9	7.9	9	10	10	10
Houston Pilots L - Greens Bayou	10	10	10	10	10	10	10	10	10	10	10	10	10	10	7.9	9	7.9	6.9	6.9	7.9	7.9	10	10	10
Houston Pilots K - Shell Crude	10	10	10	10	10	10	10	10	10	10	10	10	10	10	7.9	7.9	7.9	6.9	5.9	7.9	7.9	9	10	10
Houston Pilots J - Lynchburg Ferries	10	10	10	10	10	10	10	10	10	10	10	10	10	10	7.9	9	7.9	6.9	6.9	7.9	7.9	10	10	10
Houston Pilots I - Exxon 3	10	10	10	10	10	10	10	10	10	10	10	10	10	10	7.9	7.9	7.9	6.9	5.9	7.9	6.9	9	10	10
Houston Pilots H - Morgans Point	10	10	10	10	10	10	10	10	10	10	10	10	9	10	7.9	7.9	7.9	6.9	5.9	6.9	6.9	9	10	10
Houston Pilots G - 75/76	5.9	4.9	6.9	6.9	6.9	6.9	6.9	7.9	7.9	7.9	6.9	5.9	5.9	5.9	4.9	4.9	4.9	4.9	3.9	3.9	4.9	5.9	10	10
Houston Pilots F - 63/64	5.9	4.9	5.9	6.9	6.9	6.9	6.9	7.9	7.9	6.9	6.9	5.9	5.9	5.9	4.9	4.9	4.9	4.9	3.9	3.9	4.9	4.9	10	10
Houston Pilots E - 51/52	4.9	4.9	5.9	5.9	6.9	6.9	6.9	6.9	6.9	6.9	6.9	5.9	5.9	4.9	4.9	4.9	4.9	3.9	2.9	3.9	4.9	4.9	10	9
Houston Pilots D - 37/38	4.9	4.9	5.9	5.9	6.9	5.9	6.9	6.9	6.9	6.9	6.9	5.9	5.9	4.9	4.9	4.9	4.9	3.9	2.9	3.9	4.9	4.9	9	9
Houston Pilots C - 25/26	4.9	4.9	5.9	5.9	5.9	5.9	6.9	6.9	6.9	6.9	6.9	5.9	5.9	4.9	4.9	4.9	4.9	4.9	2.9	3.9	4.9	4.9	9	9
Houston Pilots B - 11/12	4.9	4.9	4.9	5.9	5.9	5.9	6.9	6.9	6.9	5.9	5.9	5.9	5.9	4.9	4.9	4.9	4.9	3.9	2.9	3.9	3.9	4.9	9	9
Houston Pilots A - 1 & 2 Bravo	4.9	4.9	4.9	4.9	5.9	5.9	6.9	6.9	5.9	5.9	4.9	4.9	4.9	4.9	4.9	4.9	4.9	3.9	2.9	3.9	3.9	3.9	9	9

NOTE: This is automated data that may/may not agree with the official BAM thinking that's found on the daily slides or special visibility report slides. This data should be used as a guide only

Houston Pilots Wind Chart



Wind	Fri 3 pm	Fri 4 pm	Fri 5 pm	Fri 6 pm	Fri 7 pm	Fri 8 pm	Fri 9 pm	Fri 10 pm	Fri 11 pm	Sat 12 am	Sat 1 am	Sat 2 am	Sat 3 am	Sat 4 am	Sat 5 am	Sat 6 am	Sat 7 am	Sat 8 am	Sat 9 am	Sat 10 am	Sat 11 am	Sat 12 pm	Sat 1 pm	Sat 2 pm
Houston Pilots N - 610 Bridge	10 20 ↖	10 20 ↖	10 20 ↖	10 21 ↖	10 20 ↖	10 21 ↖	9 18 ↖	8 17 ↖	8 16 ↖	8 15 ↖	7 15 ↖	7 14 ↖	6 14 ↖	6 14 ↖	6 14 ↖	6 14 ↖	6 14 ↖	6 15 ↖	7 15 ↖	8 17 ↖	9 17 ↖	10 21 ↖	12 23 ↖	13 23 ↖
Houston Pilots M - Kinder 1	10 18 ↖	10 20 ↖	10 20 ↖	10 21 ↖	10 20 ↖	10 21 ↖	9 18 ↖	8 17 ↖	8 16 ↖	8 16 ↖	7 15 ↖	7 14 ↖	6 14 ↖	6 14 ↖	6 14 ↖	6 14 ↖	6 14 ↖	6 15 ↖	7 15 ↖	8 17 ↖	9 17 ↖	10 21 ↖	12 22 ↖	13 23 ↖
Houston Pilots L - Greens Bayou	10 18 ↖	10 18 ↖	10 20 ↖	10 20 ↖	10 20 ↖	10 20 ↖	9 18 ↖	8 17 ↖	8 16 ↖	8 15 ↖	7 15 ↖	7 14 ↖	7 14 ↖	6 14 ↖	6 14 ↖	6 14 ↖	6 14 ↖	6 15 ↖	7 15 ↖	8 16 ↖	9 17 ↖	10 20 ↖	12 22 ↖	13 22 ↖
Houston Pilots K - Shell Crude	10 18 ↖	10 20 ↖	10 20 ↖	12 21 ↖	10 20 ↖	10 20 ↖	9 18 ↖	8 17 ↖	8 16 ↖	8 16 ↖	8 15 ↖	7 15 ↖	7 15 ↖	7 14 ↖	7 14 ↖	7 14 ↖	7 15 ↖	7 15 ↖	8 15 ↖	8 17 ↖	10 17 ↖	10 20 ↖	13 22 ↖	13 22 ↖
Houston Pilots J - Lynchburg Ferries	10 18 ↖	10 18 ↖	10 20 ↖	10 20 ↖	10 20 ↖	10 20 ↖	9 17 ↖	8 16 ↖	8 15 ↖	8 15 ↖	7 15 ↖	7 13 ↖	6 14 ↖	6 14 ↖	6 14 ↖	6 14 ↖	6 14 ↖	6 14 ↖	7 15 ↖	8 16 ↖	9 17 ↖	10 20 ↖	12 22 ↖	13 22 ↖
Houston Pilots I - Exxon 3	12 20 ↖	13 20 ↖	13 21 ↖	13 21 ↖	13 21 ↖	13 21 ↖	13 20 ↖	12 18 ↖	12 17 ↖	10 17 ↖	10 16 ↖	10 16 ↖	10 16 ↖	10 16 ↖	10 16 ↖	10 16 ↖	10 16 ↖	9 15 ↖	10 16 ↖	10 17 ↖	12 18 ↖	13 20 ↖	13 22 ↖	14 23 ↖
Houston Pilots H - Morgans Point	12 20 ↖	13 21 ↖	13 21 ↖	14 22 ↖	14 21 ↖	13 21 ↖	13 20 ↖	13 20 ↖	12 18 ↖	12 18 ↖	10 17 ↖	10 17 ↖	10 16 ↖	10 16 ↖	10 16 ↖	10 16 ↖	10 16 ↖	10 16 ↖	10 17 ↖	12 17 ↖	12 18 ↖	13 21 ↖	13 22 ↖	14 23 ↖
Houston Pilots G - 75/76	13 22 ↖	14 23 ↖	15 23 ↖	15 24 ↖	15 23 ↖	15 22 ↖	15 22 ↖	15 22 ↖	14 21 ↖	14 21 ↖	13 20 ↖	13 20 ↖	13 20 ↖	13 20 ↖	13 20 ↖	13 18 ↖	13 18 ↖	13 18 ↖	13 20 ↖	13 20 ↖	14 21 ↖	14 22 ↖	15 23 ↖	15 24 ↖
Houston Pilots F - 63/64	13 22 ↖	14 23 ↖	15 23 ↖	15 24 ↖	15 23 ↖	15 22 ↖	15 22 ↖	15 22 ↖	14 22 ↖	14 22 ↖	14 20 ↖	13 20 ↖	13 20 ↖	13 20 ↖	13 20 ↖	13 18 ↖	13 20 ↖	13 20 ↖	13 20 ↖	14 21 ↖	14 21 ↖	15 22 ↖	15 23 ↖	15 24 ↖
Houston Pilots E - 51/52	14 22 ↖	14 23 ↖	15 23 ↖	15 24 ↖	15 23 ↖	15 22 ↖	15 22 ↖	15 22 ↖	15 22 ↖	15 21 ↖	14 20 ↖	14 21 ↖	14 20 ↖	14 20 ↖	14 20 ↖	14 20 ↖	14 20 ↖	14 20 ↖	14 21 ↖	15 21 ↖	15 22 ↖	15 23 ↖	15 24 ↖	15 24 ↖
Houston Pilots D - 37/38	13 22 ↖	14 23 ↖	14 23 ↖	15 23 ↖	15 22 ↖	15 22 ↖	15 22 ↖	15 22 ↖	15 22 ↖	15 21 ↖	14 21 ↖	14 21 ↖	14 20 ↖	14 20 ↖	14 20 ↖	14 20 ↖	14 20 ↖	14 20 ↖	14 21 ↖	15 21 ↖	15 22 ↖	15 23 ↖	15 24 ↖	15 24 ↖
Houston Pilots C - 25/26	14 22 ↖	14 22 ↖	14 22 ↖	15 22 ↖	15 22 ↖	15 22 ↖	15 22 ↖	15 22 ↖	15 22 ↖	14 21 ↖	14 20 ↖	14 21 ↖	14 20 ↖	14 20 ↖	14 20 ↖	14 20 ↖	14 20 ↖	14 20 ↖	14 21 ↖	15 21 ↖	15 22 ↖	15 23 ↖	15 23 ↖	15 23 ↖
Houston Pilots B - 11/12	13 21 ↖	14 21 ↖	14 21 ↖	14 21 ↖	14 21 ↖	14 21 ↖	14 21 ↖	14 21 ↖	13 21 ↖	13 21 ↖	13 20 ↖	13 20 ↖	13 20 ↖	13 20 ↖	13 20 ↖	13 20 ↖	13 20 ↖	13 20 ↖	13 20 ↖	13 20 ↖	14 20 ↖	15 21 ↖	15 22 ↖	15 22 ↖
Houston Pilots A - 1 & 2 Bravo	13 20 ↖	13 20 ↖	14 21 ↖	15 22 ↖	15 22 ↖	15 22 ↖	15 22 ↖	15 22 ↖	15 22 ↖	15 22 ↖	15 22 ↖	15 22 ↖	15 21 ↖	15 21 ↖	15 21 ↖	15 21 ↖	15 21 ↖	15 21 ↖	15 22 ↖	15 21 ↖	15 21 ↖	15 22 ↖	15 22 ↖	15 22 ↖

NOTE: This is automated data that may/may not agree with the official BAM thinking that's found on the daily slides. This data should be used as a guide only.

Houston Pilots: FRI. 04/10/2026



Forecast Discussion

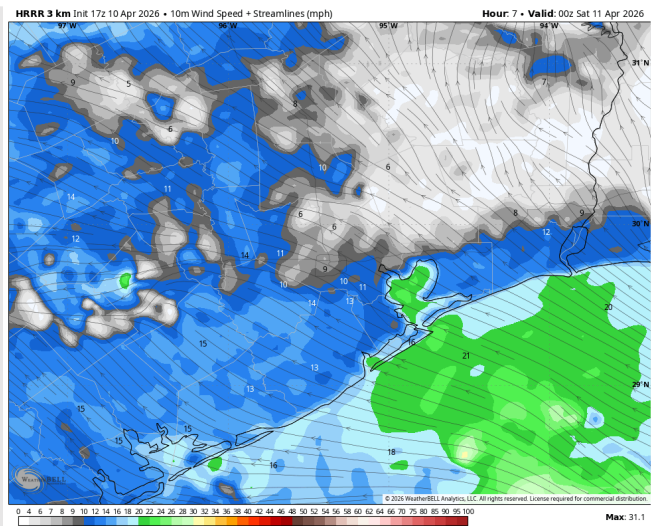
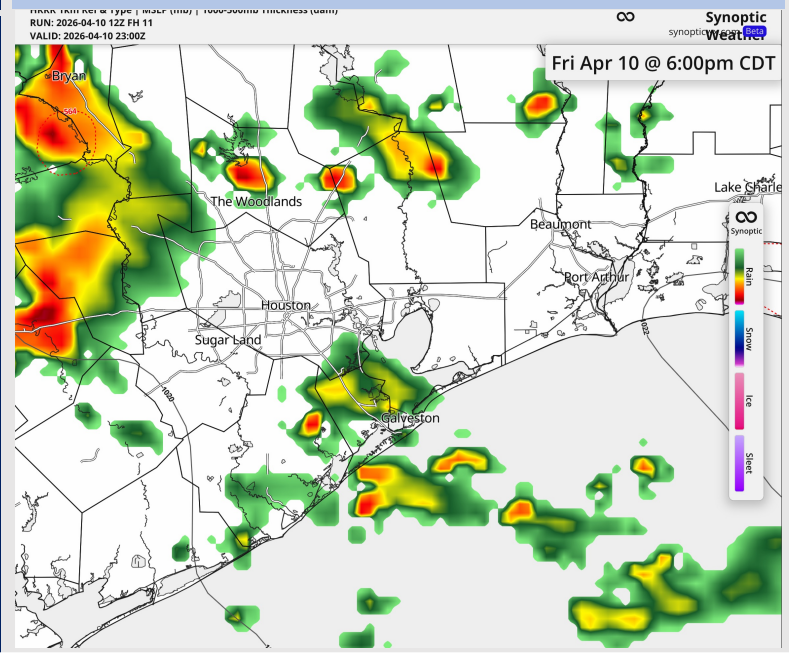
Precip: Scattered storms and downpours to continue to be possible through 11PM for all stations before tapering off.

Wind: Winds out of the SE for the rest of the evening. **N of Morgan's Point:** Winds of 5 – 9 kts. **S of Morgan's Point:** Winds of 13 – 18 kts through 9PM, decreasing to 9 – 14 kts thereafter.

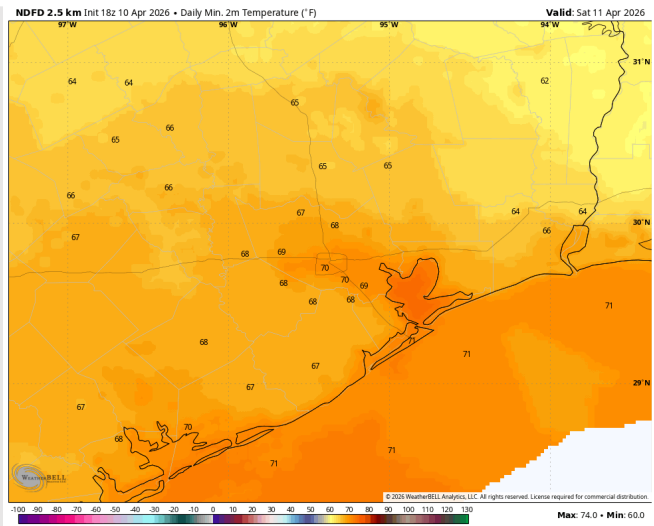
Low Temps: **N of Morgan's Point:** Low 70s F. **S of Morgan's Point:** Low 70s F.

Visibility: No visibility concerns for today.

Precip Image: 6 PM CT



Wind Speed:
7 PM CT



Low Temps
Saturday AM

Houston Pilots: SAT. 04/11/2026

Forecast Discussion

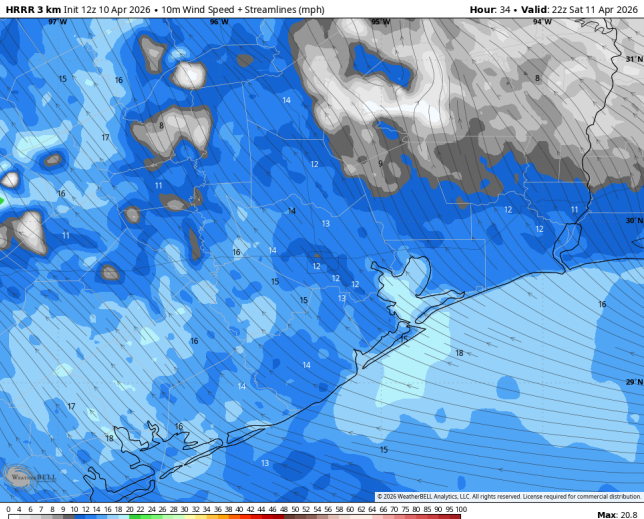
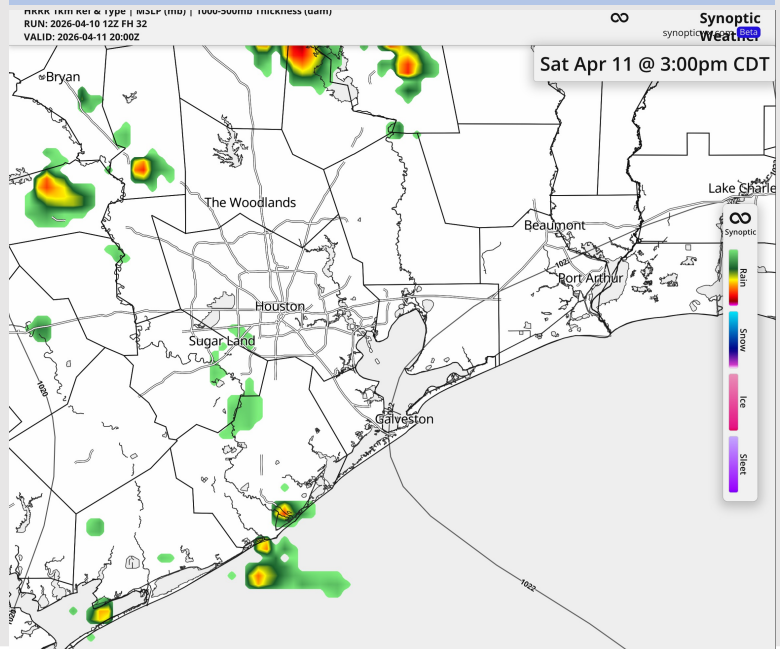
Precip: On and off light rain will be in play for all stations before 2 AM before clearing. A few storms possible once again for all stations after 1PM. Showers/storms move out by 6 PM then dry conditions favored thereafter.

Wind: Winds out of the SE for the entire day. **N of Morgan's Point:** Winds of 6 – 11 kts, increasing to 12 – 17 kts after 2 PM. **S of Morgan's Point:** Winds of 10 - 16 kts, increasing to 15 – 20 kts after 2 PM. **Gusts up to 25 kts possible from 4-9 PM.**

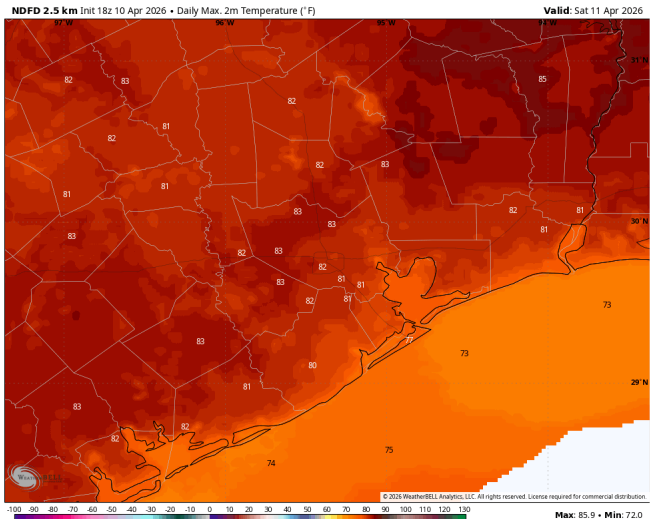
High Temps: **N of Morgan's Point:** Low 80s F. **S of Morgan's Point:** Mid 70s F.

Visibility: No visibility concerns for Saturday.

Precip Image: 3 PM CT



Wind Speed:
5 PM CT



High Temps
Saturday

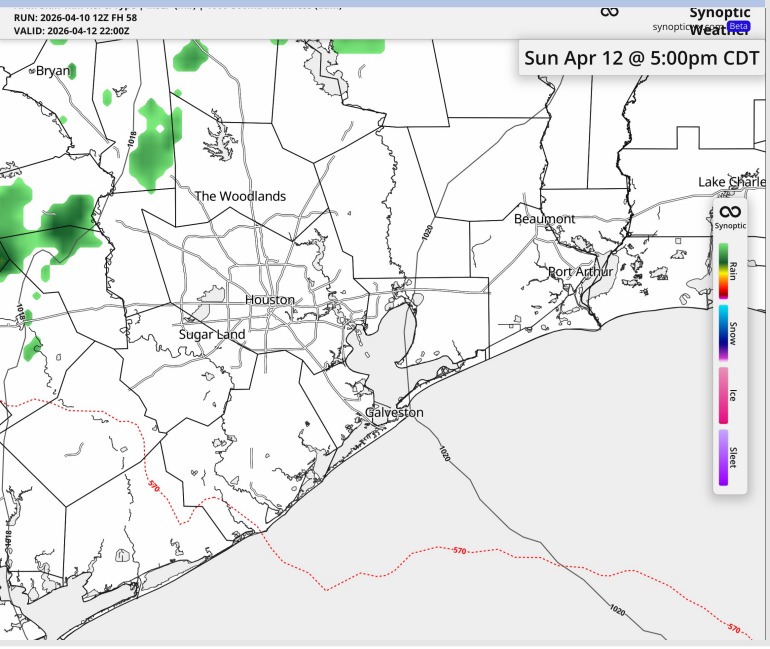
Houston Pilots: SUN. 04/12/2026



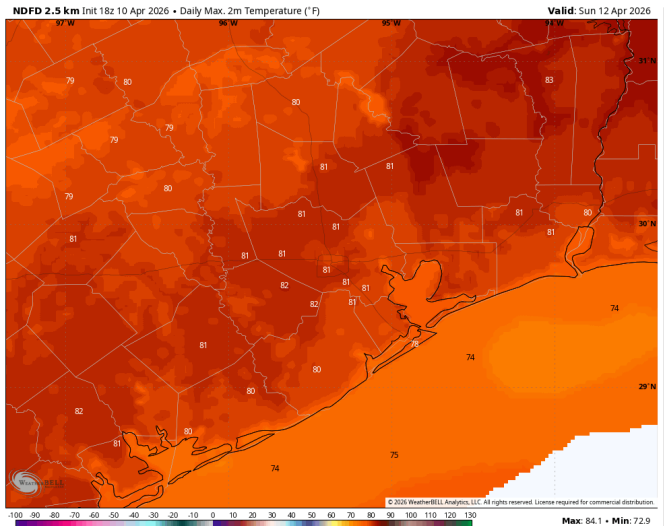
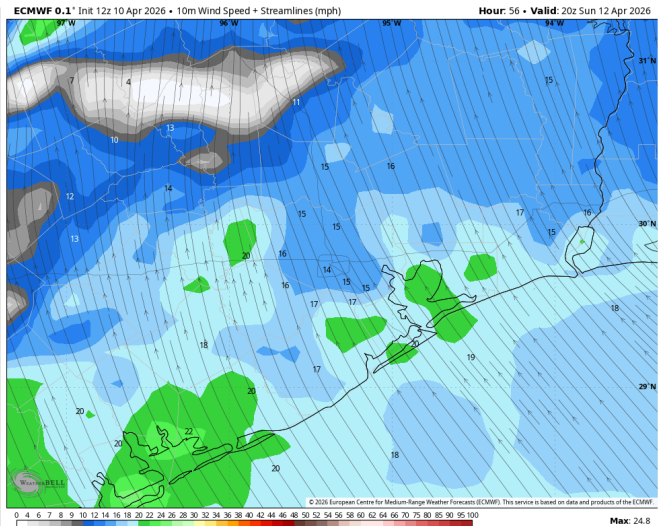
Forecast Discussion

- Precip:** Favoring dry conditions for the entire day.
- Wind:** Winds out of the SE for the entire day. **N of Morgan's Point:** Winds of 8 – 13 kts, decreasing to 5 - 10 kts after 8PM. **S of Morgan's Point:** Winds of 14 – 19 kts. **Gusts of up to 25 kts possible from 12-6 PM.**
- High Temps:** **N of Morgan's Point:** Mid 80s F. **S of Morgan's Point:** Upper 70s F.
- Visibility:** No visibility concerns for Sunday.

Precip Image: 5 PM CT

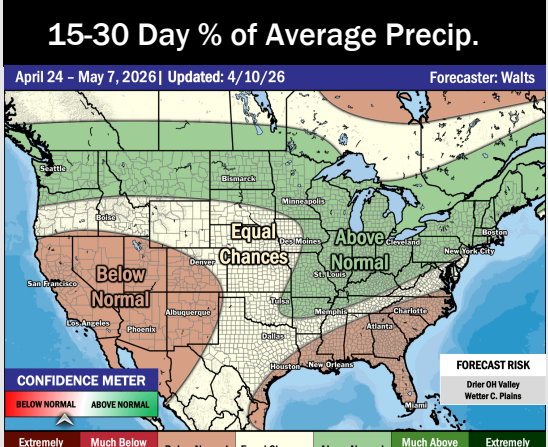
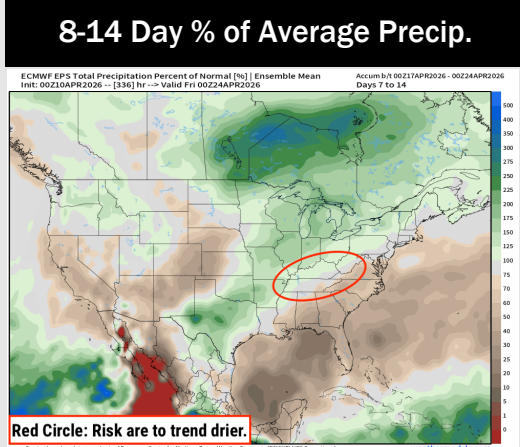
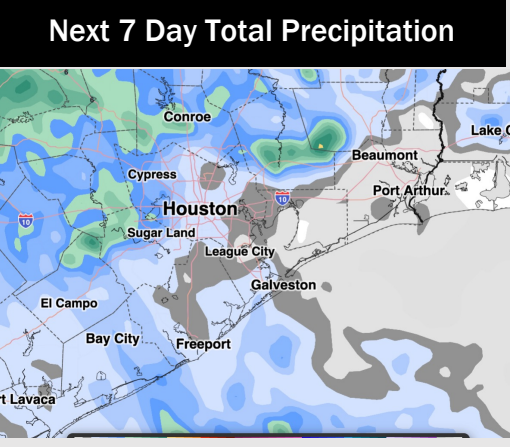
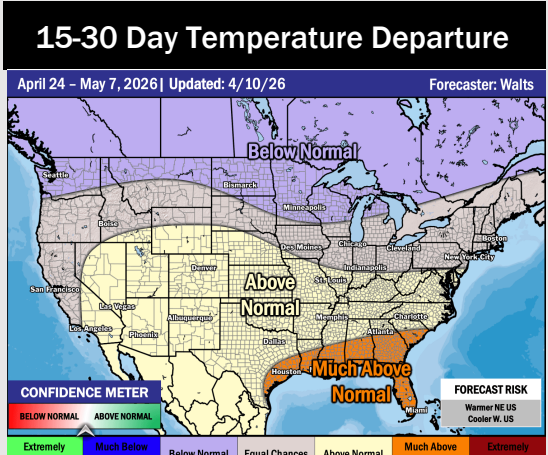
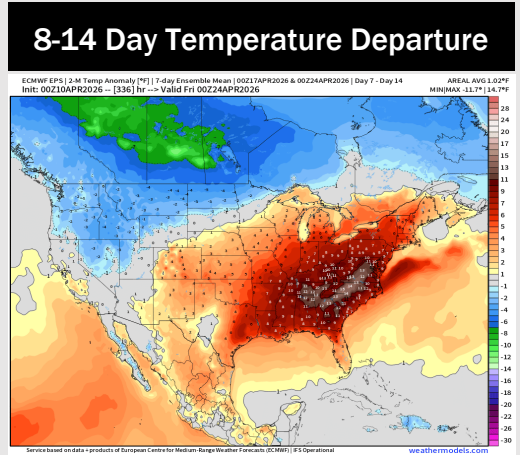
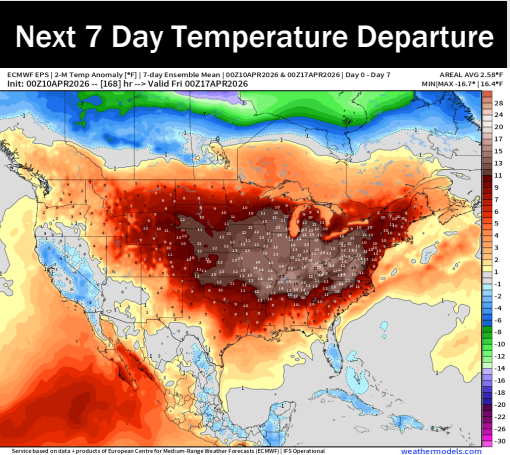


Wind Speed:
3 PM CT



High Temps
Sunday

Houston Pilots: 04/10/2026



- Above normal temps are favored over the next 7 days, with scattered storm chances through the week.
- Above normal temperatures and near normal rain chances in the Week 2 period.
- Above normal temperatures and below normal rainfall expected for the last week of April into the first week of May.