

Houston Pilots Forecast Package



Updated: 10:10 PM CT

Thursday, April 9, 2026

Forecaster: Alexis Ratkay

Weather Headlines

- Scattered showers/downpours expected after 12PM FRI, then showers/storms possible SAT and SUN afternoon.
- **Gusts of up to 20-25 kts possible SAT and SUN PM.**
- No fog concerns over the next 72 hours.



Current Radar: 9:45 PM CT

As always, please do not hesitate to reach out to us with any forecast questions at [\(317\)-560-8122](tel:317-560-8122). Press 1 for forecast questions.



You can also access real-time forecast updates and 24/7 meteorological chat assistance on your [Clarity](#) app.

Houston Pilots Tropical Update



Seasonal Hurricane Outlook

2026 Hurricane Season Outlook



Updated: 4/9/26

Forecaster: Waits



2026 Hurricane Season Forecast Stats			
Named Storms	Hurricanes	Major Hurricanes	ACE
9 - 13	3 - 6	1 - 3	BELOW NORMAL

Much Below Normal
Below Normal
Near Normal
Above Normal
Much Above Normal

Graphic to the left represents our favored seasonal outlook for the 2026 Hurricane Season. Conditions expected to be less favorable for tropical development within the Gulf this season.

No notable tropical development is expected over the next 7 days.

Houston Pilots Visibility Chart (miles)



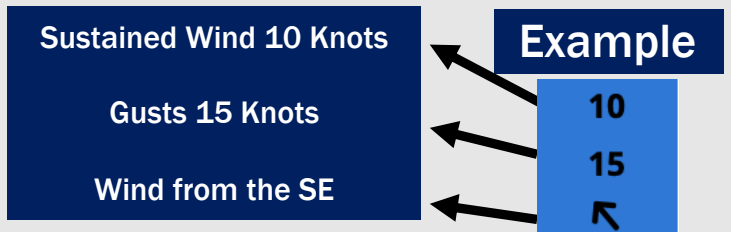
Forecast Confidence



Visibility	Thu 11 pm	Fri 12 am	Fri 1 am	Fri 2 am	Fri 3 am	Fri 4 am	Fri 5 am	Fri 6 am	Fri 7 am	Fri 8 am	Fri 9 am	Fri 10 am	Fri 11 am	Fri 12 pm	Fri 1 pm	Fri 2 pm	Fri 3 pm	Fri 4 pm	Fri 5 pm	Fri 6 pm	Fri 7 pm	Fri 8 pm	Fri 9 pm	Fri 10 pm
Houston Pilots N - 610 Bridge	10	10	10	10	10	10	10	10	10	10	7.9	7.9	10	10	10	10	10	10	10	10	10	10	10	10
Houston Pilots M - Kinder 1	10	10	10	10	10	10	10	10	10	10	7.9	7.9	10	10	10	10	10	10	10	10	10	10	10	10
Houston Pilots L - Greens Bayou	10	10	10	10	10	10	10	10	10	10	7.9	7.9	10	10	10	10	10	10	10	10	10	10	10	10
Houston Pilots K - Shell Crude	10	10	10	10	10	10	10	10	10	10	7.9	7.9	10	10	10	10	10	10	10	10	10	10	10	10
Houston Pilots J - Lynchburg Ferries	10	10	10	10	10	10	10	10	10	10	7.9	7.9	10	10	10	10	10	10	10	10	10	10	10	10
Houston Pilots I - Exxon 3	10	10	10	10	10	10	10	10	10	10	7.9	7.9	10	10	10	10	10	10	10	10	10	10	10	10
Houston Pilots H - Morgans Point	10	10	10	10	10	10	10	10	10	10	7.9	7.9	10	10	10	10	10	10	10	10	10	10	10	10
Houston Pilots G - 75/76	6.9	6.9	6.9	6.9	6.9	6.9	6.9	6.9	7.9	7.9	5.9	6.9	6.9	7.9	7.9	9	10	9	6.9	6.9	6.9	6.9	9	9
Houston Pilots F - 63/64	6.9	6.9	6.9	6.9	6.9	6.9	6.9	6.9	7.9	7.9	5.9	6.9	6.9	7.9	7.9	9	10	9	6.9	6.9	6.9	6.9	9	9
Houston Pilots E - 51/52	6.9	5.9	5.9	5.9	5.9	6.9	5.9	6.9	6.9	6.9	4.9	5.9	6.9	6.9	6.9	6.9	6.9	6.9	6.9	6.9	5.9	6.9	9	9
Houston Pilots D - 37/38	5.9	5.9	5.9	5.9	5.9	6.9	5.9	6.9	6.9	6.9	4.9	5.9	6.9	6.9	6.9	6.9	6.9	6.9	5.9	5.9	5.9	6.9	9	9
Houston Pilots C - 25/26	5.9	5.9	5.9	5.9	5.9	5.9	5.9	6.9	6.9	6.9	4.9	5.9	5.9	6.9	6.9	6.9	6.9	6.9	5.9	5.9	5.9	5.9	9	9
Houston Pilots B - 11/12	5.9	5.9	5.9	4.9	5.9	5.9	5.9	6.9	6.9	6.9	4.9	5.9	5.9	6.9	6.9	6.9	6.9	6.9	5.9	5.9	5.9	5.9	9	9
Houston Pilots A - 1 & 2 Bravo	4.9	4.9	4.9	4.9	4.9	4.9	4.9	5.9	6.9	6.9	4.9	5.9	5.9	5.9	5.9	6.9	6.9	6.9	5.9	4.9	4.9	4.9	9	9

NOTE: This is automated data that may/may not agree with the official B.A.M. thinking that's found on the daily slides or special visibility report slides. This data should be used as a guide only

Houston Pilots Wind Chart



Wind	Thu 11 pm	Fri 12 am	Fri 1 am	Fri 2 am	Fri 3 am	Fri 4 am	Fri 5 am	Fri 6 am	Fri 7 am	Fri 8 am	Fri 9 am	Fri 10 am	Fri 11 am	Fri 12 pm	Fri 1 pm	Fri 2 pm	Fri 3 pm	Fri 4 pm	Fri 5 pm	Fri 6 pm	Fri 7 pm	Fri 8 pm	Fri 9 pm	Fri 10 pm
Houston Pilots N - 610 Bridge	9 18 ↙	8 17 ↙	8 17 ↙	8 17 ↙	8 15 ↙	7 15 ↙	7 15 ↙	6 15 ↙	6 14 ↙	6 14 ↙	7 15 ↙	7 15 ↙	8 16 ↙	9 17 ↙	10 20 ↙	10 20 ↙	10 21 ↙	10 21 ↙	12 22 ↙	12 22 ↙	12 22 ↙	10 21 ↙	10 18 ↙	8 17 ↙
Houston Pilots M - Kinder 1	9 18 ↙	9 17 ↙	8 17 ↙	8 17 ↙	8 16 ↙	7 15 ↙	7 15 ↙	7 15 ↙	6 15 ↙	6 14 ↙	7 15 ↙	7 15 ↙	8 16 ↙	9 17 ↙	10 20 ↙	10 20 ↙	10 21 ↙	10 21 ↙	12 22 ↙	12 22 ↙	12 22 ↙	10 21 ↙	9 18 ↙	8 17 ↙
Houston Pilots L - Greens Bayou	9 18 ↙	9 17 ↙	8 17 ↙	8 17 ↙	8 16 ↙	8 15 ↙	7 15 ↙	7 15 ↙	6 14 ↙	6 14 ↙	7 15 ↙	8 15 ↙	8 16 ↙	9 17 ↙	10 20 ↙	10 20 ↙	10 21 ↙	10 21 ↙	12 21 ↙	12 22 ↙	12 21 ↙	10 20 ↙	9 18 ↙	8 17 ↙
Houston Pilots K - Shell Crude	9 20 ↙	9 18 ↙	8 17 ↙	8 17 ↙	8 16 ↙	8 16 ↙	8 16 ↙	7 15 ↙	7 15 ↙	6 15 ↙	7 15 ↙	8 15 ↙	8 16 ↙	10 17 ↙	10 20 ↙	10 20 ↙	10 21 ↙	12 21 ↙	12 21 ↙	12 22 ↙	12 21 ↙	10 20 ↙	10 18 ↙	9 17 ↙
Houston Pilots J - Lynchburg Ferries	9 18 ↙	9 17 ↙	8 17 ↙	8 17 ↙	8 16 ↙	7 15 ↙	7 15 ↙	7 15 ↙	6 14 ↙	6 14 ↙	7 14 ↙	7 15 ↙	8 15 ↙	9 17 ↙	10 20 ↙	10 18 ↙	10 21 ↙	12 21 ↙	12 21 ↙	12 22 ↙	12 21 ↙	10 20 ↙	9 18 ↙	8 17 ↙
Houston Pilots I - Exxon 3	13 20 ↙	13 20 ↙	13 20 ↙	13 18 ↙	13 18 ↙	12 17 ↙	10 17 ↙	10 16 ↙	10 15 ↙	9 15 ↙	10 15 ↙	10 16 ↙	10 16 ↙	10 17 ↙	12 20 ↙	12 20 ↙	13 21 ↙	13 22 ↙	13 22 ↙	14 22 ↙	14 22 ↙	13 21 ↙	13 20 ↙	13 18 ↙
Houston Pilots H - Morgans Point	14 21 ↙	14 21 ↙	13 21 ↙	13 20 ↙	13 20 ↙	13 18 ↙	12 17 ↙	10 16 ↙	10 15 ↙	10 15 ↙	10 16 ↙	10 16 ↙	10 17 ↙	10 18 ↙	12 20 ↙	13 21 ↙	13 22 ↙	13 22 ↙	14 22 ↙	14 22 ↙	14 22 ↙	13 21 ↙	13 21 ↙	13 20 ↙
Houston Pilots G - 75/76	16 23 ↙	16 24 ↙	16 23 ↙	16 23 ↙	15 23 ↙	15 22 ↙	14 21 ↙	14 21 ↙	13 20 ↙	13 18 ↙	13 18 ↙	13 18 ↙	13 20 ↙	13 20 ↙	13 21 ↙	13 22 ↙	14 23 ↙	15 23 ↙	15 24 ↙	15 24 ↙	15 24 ↙	15 23 ↙	15 22 ↙	15 22 ↙
Houston Pilots F - 63/64	16 24 ↙	17 24 ↙	17 24 ↙	16 23 ↙	16 23 ↙	15 23 ↙	15 21 ↙	15 21 ↙	14 20 ↙	13 18 ↙	13 20 ↙	13 20 ↙	13 20 ↙	13 21 ↙	13 21 ↙	13 22 ↙	14 23 ↙	15 24 ↙	15 24 ↙	15 24 ↙	15 24 ↙	15 22 ↙	15 22 ↙	15 22 ↙
Houston Pilots E - 51/52	17 24 ↙	17 25 ↙	17 25 ↙	17 24 ↙	17 24 ↙	16 24 ↙	15 22 ↙	15 22 ↙	15 21 ↙	14 20 ↙	14 20 ↙	14 20 ↙	14 21 ↙	14 21 ↙	14 22 ↙	14 23 ↙	15 23 ↙	15 23 ↙	15 23 ↙	15 23 ↙	15 23 ↙	15 22 ↙	15 22 ↙	15 22 ↙
Houston Pilots D - 37/38	17 25 ↙	17 25 ↙	17 25 ↙	17 24 ↙	17 24 ↙	16 24 ↙	15 22 ↙	15 22 ↙	14 21 ↙	14 20 ↙	14 20 ↙	14 20 ↙	14 21 ↙	14 21 ↙	14 22 ↙	14 23 ↙	15 23 ↙	15 23 ↙	15 23 ↙	15 23 ↙	15 23 ↙	15 22 ↙	15 22 ↙	15 22 ↙
Houston Pilots C - 25/26	17 24 ↙	17 25 ↙	17 25 ↙	16 24 ↙	16 24 ↙	16 23 ↙	15 22 ↙	15 22 ↙	14 21 ↙	13 20 ↙	13 20 ↙	13 20 ↙	14 21 ↙	14 21 ↙	14 22 ↙	14 22 ↙	14 23 ↙	15 23 ↙	15 23 ↙	15 22 ↙	15 22 ↙	15 22 ↙	15 22 ↙	15 22 ↙
Houston Pilots B - 11/12	15 23 ↙	16 23 ↙	15 23 ↙	15 22 ↙	15 22 ↙	15 22 ↙	14 21 ↙	14 21 ↙	13 20 ↙	13 18 ↙	13 18 ↙	13 18 ↙	13 20 ↙	13 20 ↙	13 20 ↙	14 21 ↙	14 21 ↙	14 22 ↙	14 22 ↙	14 21 ↙	14 21 ↙	14 21 ↙	14 21 ↙	14 21 ↙
Houston Pilots A - 1 & 2 Bravo	17 25 ↙	17 26 ↙	17 26 ↙	17 25 ↙	17 24 ↙	17 24 ↙	16 23 ↙	15 23 ↙	15 22 ↙	15 21 ↙	14 21 ↙	14 21 ↙	14 21 ↙	14 21 ↙	14 20 ↙	14 20 ↙	13 21 ↙	13 21 ↙	14 21 ↙	14 21 ↙	15 22 ↙	15 22 ↙	15 22 ↙	15 22 ↙

NOTE: This is automated data that may/may not agree with the official BAM thinking that's found on the daily slides. This data should be used as a guide only.

Houston Pilots: FRI. 04/10/2026



Forecast Discussion

Precip: Drizzle/light rain possible after 4 AM, then scattered showers/downpours move into the area at 12 PM and continue until 6 PM mainly north of Morgan’s Point.

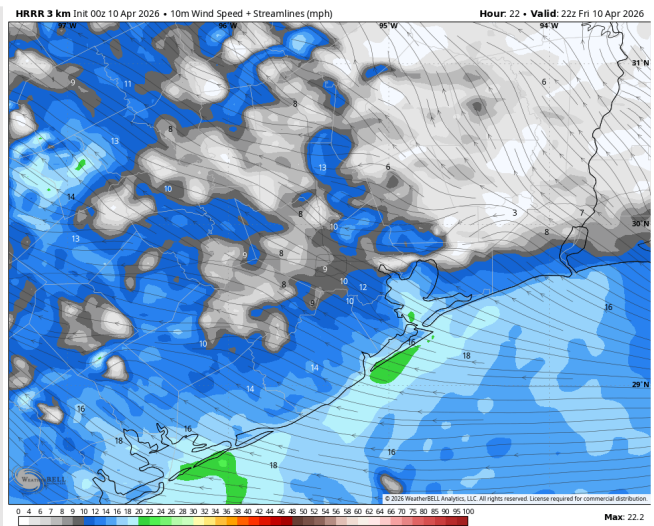
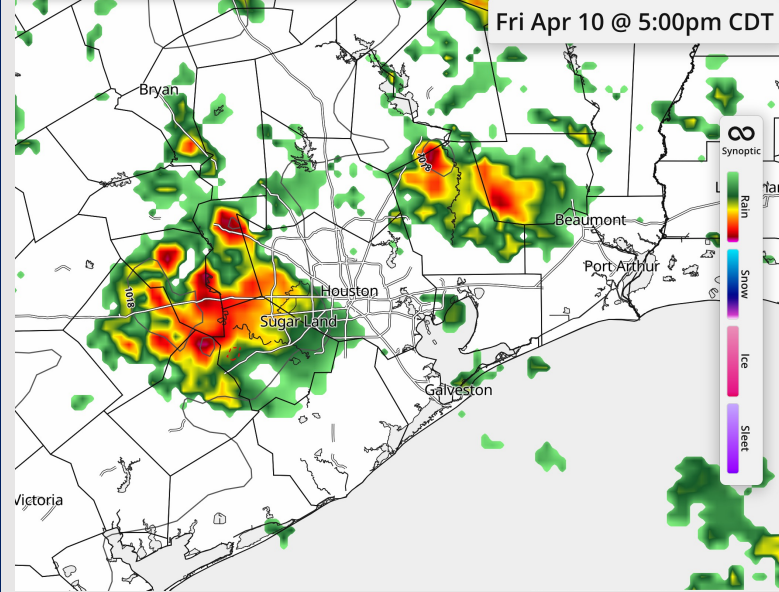
Wind: Winds out of the SE for the entire day. **N of Morgan’s Point:** Winds of 6 – 11 kts. **S of Morgan’s Point:** Winds of 13 – 18 kts through 8PM, decreasing to 9 – 14 kts thereafter.

High Temps: **N of Morgan’s Point:** Low 80s F. **S of Morgan’s Point:** Mid 70s F.

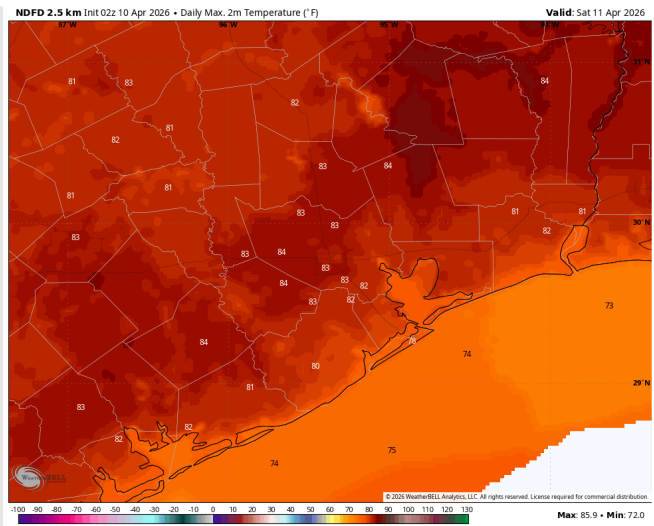
Visibility: No visibility concerns for today.

Precip Image: 5 PM CT

RHFS-A 1km Ker & Type | MSLP (mb) | 1000-500mb Thickness (dam)
RUN: 2026-04-10 00Z FH 22
VALID: 2026-04-10 22:00Z
Synoptic Weather
synopticwx.com Beta



Wind Speed:
5 PM CT



High Temps
Today

Houston Pilots: SAT. 04/11/2026



Forecast Discussion

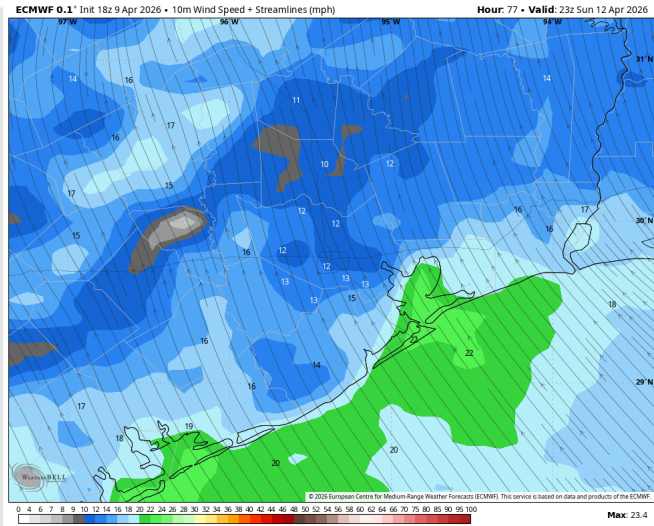
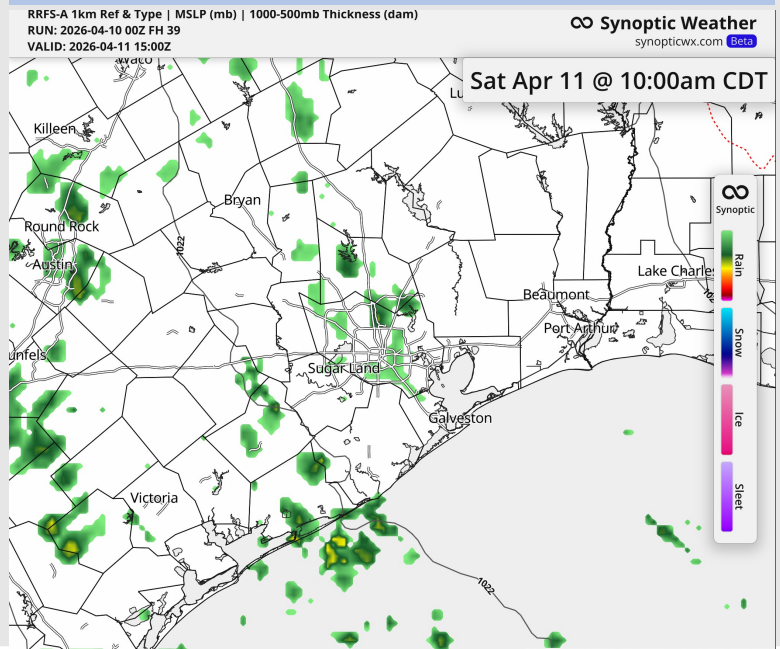
Precip: On and off light rain moves in for all stations at 1 AM, with a few storms possible after 1PM. Showers/storms move out by 4 PM then dry conditions favored thereafter.

Wind: Winds out of the SE for the entire day. **N of Morgan's Point:** Winds of 6 – 11 kts, increasing to 12 – 17 kts after 2 PM. **S of Morgan's Point:** Winds of 10 - 16 kts, increasing to 15 – 20 kts after 2 PM. **Gusts up to 25 kts possible from 4-9 PM.**

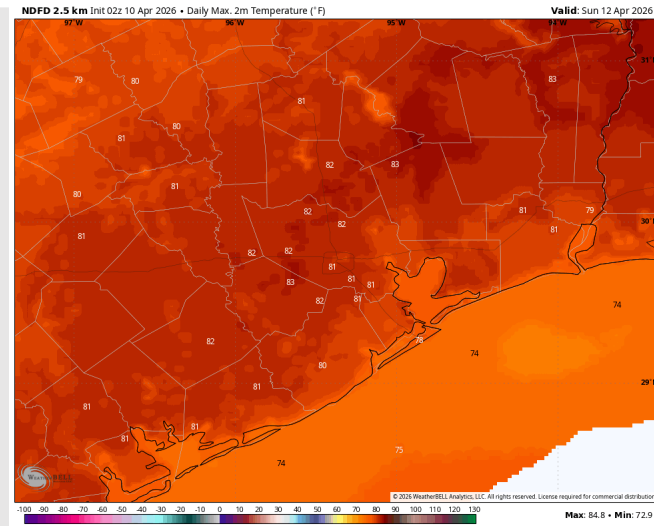
High Temps: **N of Morgan's Point:** Low 80s F. **S of Morgan's Point:** Mid 70s F.

Visibility: No visibility concerns for Saturday.

Precip Image: 10 AM CT



**Wind Speed:
6 PM CT**



**High Temps
Saturday**

Houston Pilots: SUN. 04/12/2026



Forecast Discussion

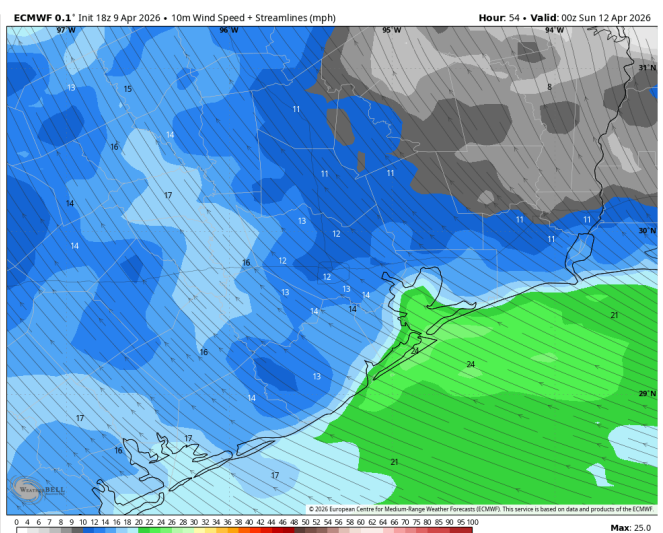
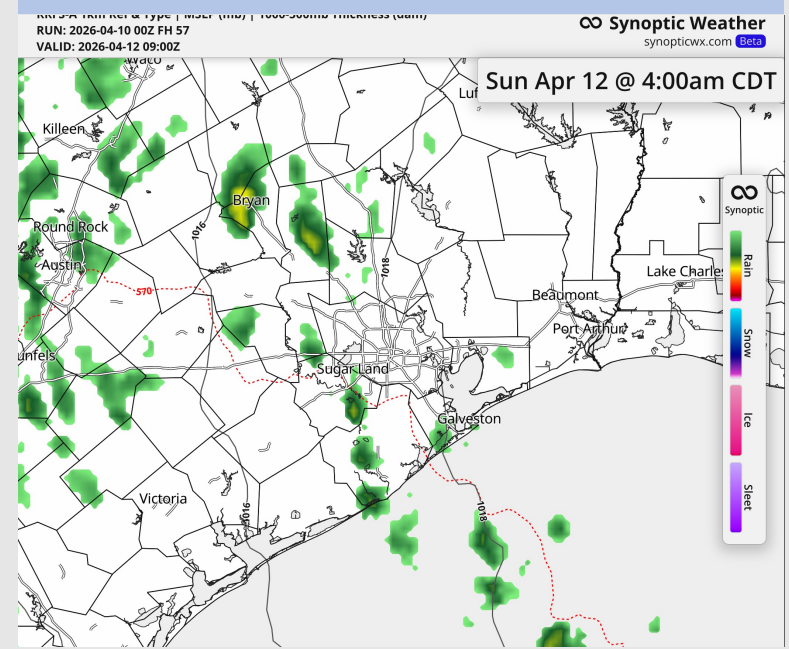
Precip: On and off light rain moves in for all stations at 1 AM, with a few storms possible after 2 PM. Showers/storms move out by 4 PM then dry conditions favored thereafter.

Wind: Winds out of the SE for the entire day. **N of Morgan's Point:** Winds of 8 – 13 kts, decreasing to 5 - 10 kts after 8PM. **S of Morgan's Point:** Winds of 14 – 19 kts. **Gusts of up to 25 kts possible from 12-6 PM.**

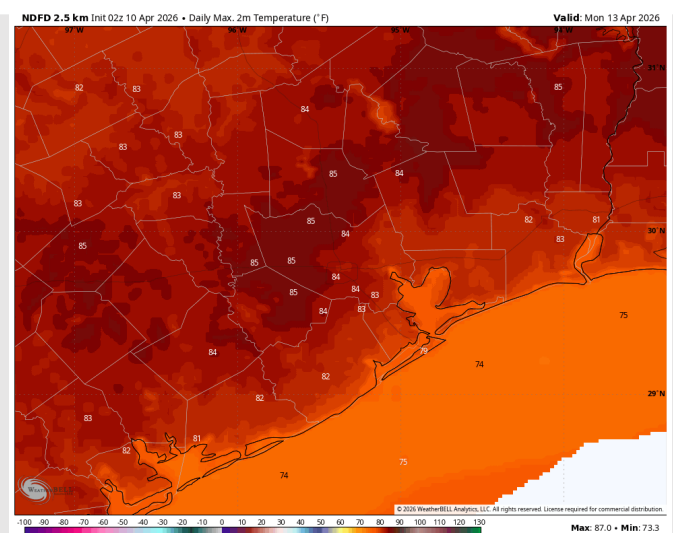
High Temps: **N of Morgan's Point:** Mid 80s F. **S of Morgan's Point:** Upper 70s F.

Visibility: No visibility concerns for Sunday.

Precip Image: 4 AM CT

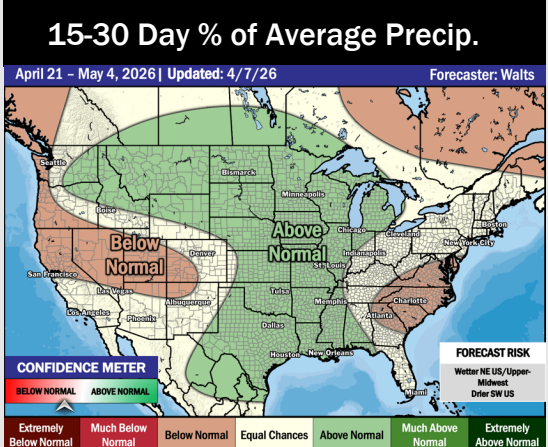
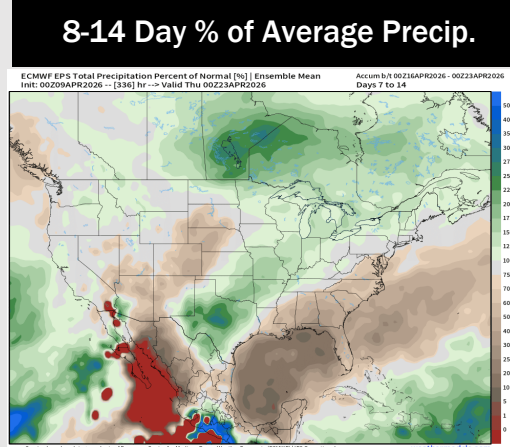
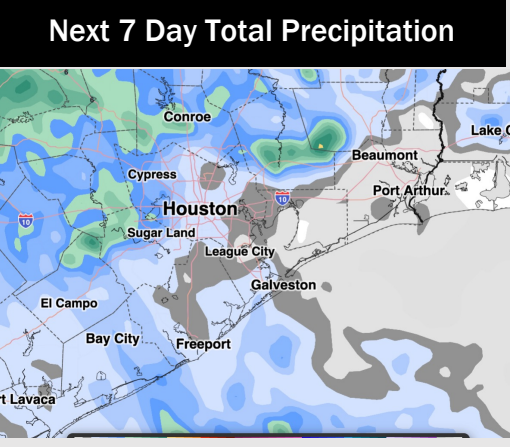
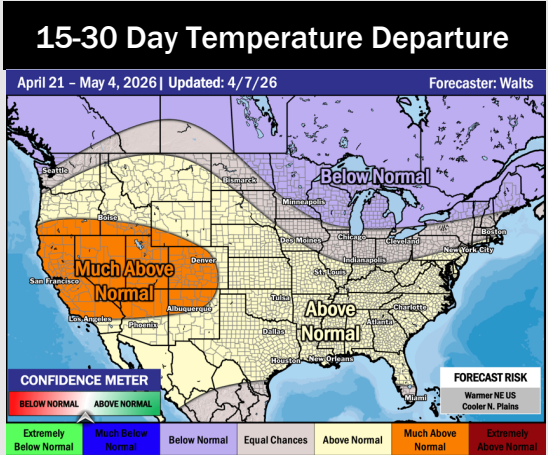
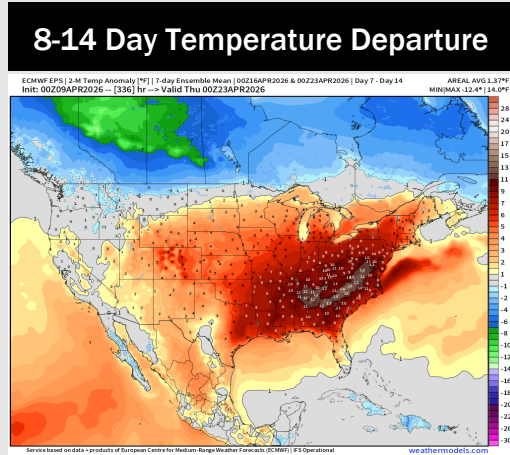
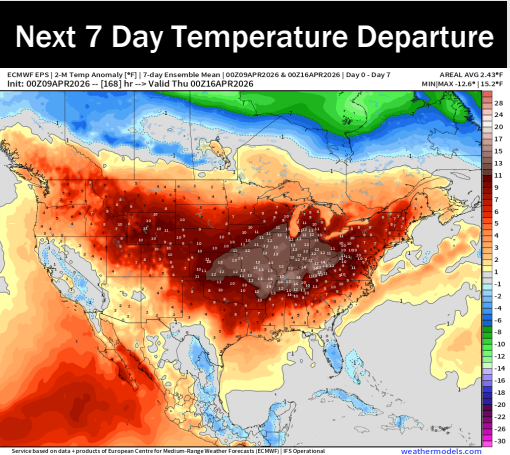


**Wind Speed:
7 PM CT**



**High Temps
Sunday**

Houston Pilots: 04/10/2026



- Above normal temps are favored over the next 7 days, with scattered storm chances through the week.
- Above normal temperatures and near normal rain chances in the Week 2 period.
- Above normal temperatures and above normal rainfall expected for the latter half of April.