



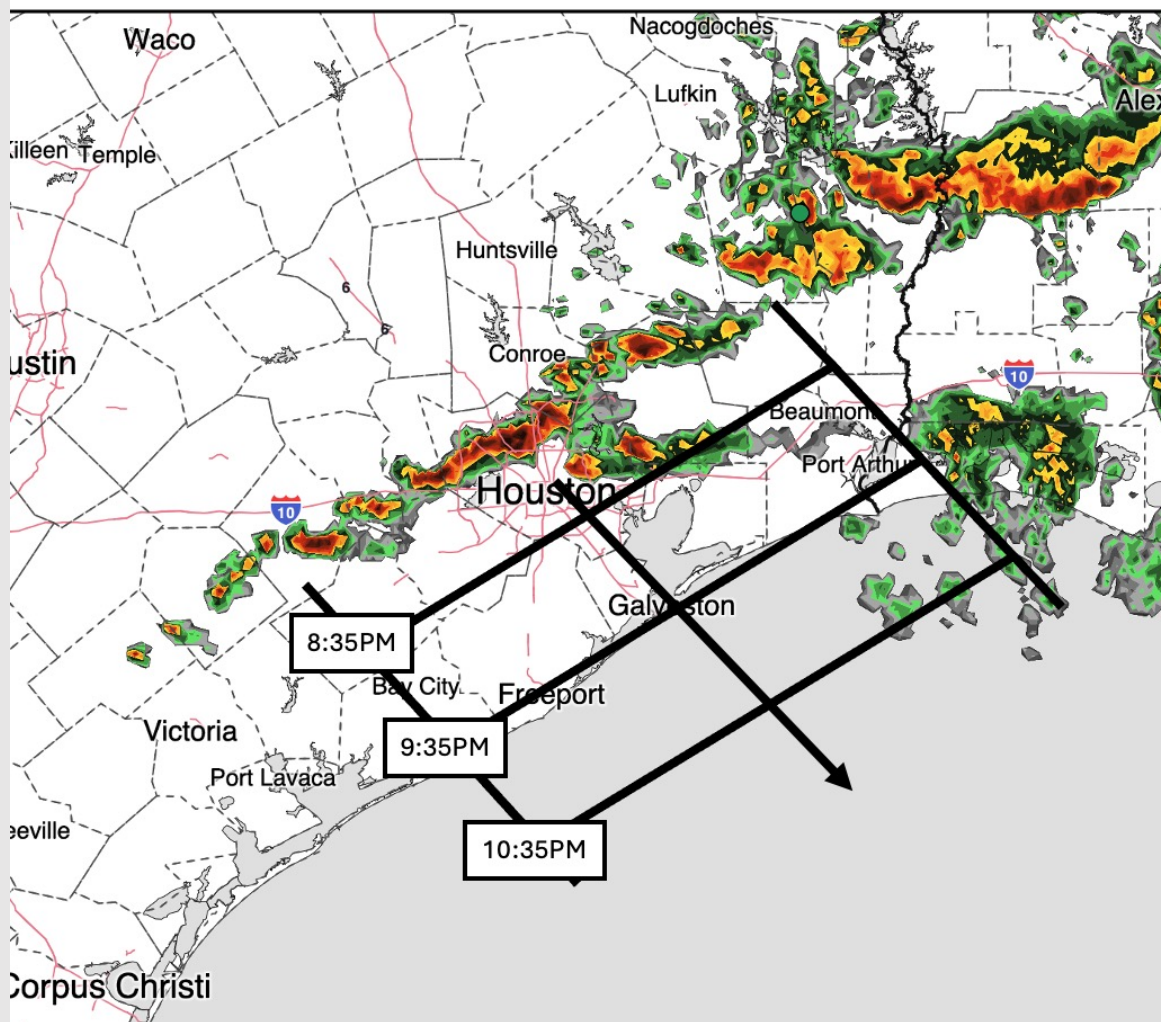
## Progression of Storms

Current: 7:43PM-CT 2/3/26

Forecaster: Wagner



- ✓ Timer: A line of storms moving SE at 26 kts.
- ✓ Risks: Lightning and wind gusts up to 34 kts.
- ✓ Downpours consisting of rainfall between 0.5" – 1".



**Confidence in Timing:**  
4/5

**Confidence in Storm  
Risks:** 4/5

- Graphic depicts arrival time for the line of storms.
- Wind gusts up to 36 kts will be possible.
- Storms will be possible through 3AM!

# Houston Pilots Forecast Package



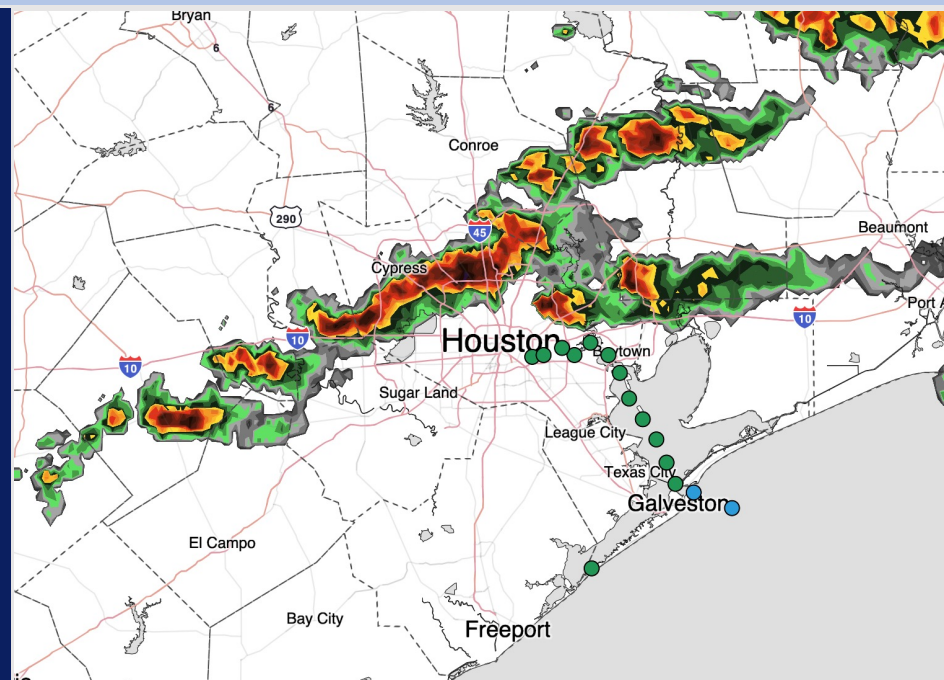
Updated: 7:47 PM CT

Tuesday, February 3<sup>rd</sup>, 2026

Forecaster: Jakeb Wagner

## Weather Headlines

- Thunderstorms to continue through ~3AM tomorrow morning.
- Fog is not favored this evening and overnight.
- **Gusty winds up to 30+ kts possible (particularly for the Boarding Station) through WED.**



Current Radar: 7:47 PM CT

As always, please do not hesitate to reach out to us with any forecast questions at **(317)-560-8122. Press 1 for forecast questions.**



You can also access real-time forecast updates and 24/7 meteorological chat assistance on your **Clarity** app.

# Houston Pilots Extended Range Visibility Report



Friday 02/06/2026

Fog is not favored.

### Forecast Confidence



Saturday 02/07/2026

Fog is not favored.

### Forecast Confidence



Sunday 02/08/2026

Fog is possible N of Morgan’s Point from 12 AM – 9 AM, however confidence remains low at this range.

### Forecast Confidence



### Chance for Fog

Friday AM	Unlikely
Friday PM	Unlikely
Saturday AM	Unlikely
Saturday PM	Unlikely
Sunday AM	Possible
Sunday PM	Possible

# Houston Pilots Visibility Chart (miles)



Visibility	Tue 4 pm	Tue 5 pm	Tue 6 pm	Tue 7 pm	Tue 8 pm	Tue 9 pm	Tue 10 pm	Tue 11 pm	Wed 12 am	Wed 1 am	Wed 2 am	Wed 3 am	Wed 4 am	Wed 5 am	Wed 6 am	Wed 7 am	Wed 8 am	Wed 9 am	Wed 10 am	Wed 11 am	Wed 12 pm	Wed 1 pm	Wed 2 pm	Wed 3 pm
Houston Pilots N - 610 Bridge	10	10	10	10	10	10	4.9	5.9	6.9	6.9	6.9	9	10	10	10	10	10	10	10	10	10	10	10	10
Houston Pilots M - Kinder 1	10	10	10	10	10	10	4.9	3.9	5.9	5.9	6.9	7.9	10	10	10	10	10	10	10	10	10	10	10	10
Houston Pilots L - Greens Bayou	10	10	10	10	10	7.9	2.5	2.9	5.9	5.9	6.9	7.9	9	10	10	10	10	10	10	10	10	10	10	10
Houston Pilots K - Shell Crude	10	10	10	10	10	7.9	2.5	2.9	5.9	5.9	6.9	6.9	9	10	10	10	10	10	10	10	10	10	10	10
Houston Pilots J - Lynchburg Ferries	10	10	10	10	10	7.9	2.5	2.9	5.9	5.9	6.9	7.9	9	10	10	10	10	10	10	10	10	10	10	10
Houston Pilots I - Exxon 3	10	10	10	10	10	7.9	4.9	3.9	4.9	5.9	6.9	6.9	7.9	10	10	10	10	10	10	10	10	10	10	10
Houston Pilots H - Morgans Point	10	10	10	10	10	7.9	4.9	3.9	2	4.9	3.9	6.9	6.9	10	10	10	10	10	10	10	10	10	10	10
Houston Pilots G - 75/76	10	10	10	10	10	7.9	7.9	3.9	0.5	0.5	0.3	5.9	6.9	6.9	6.9	7.9	7.9	6.9	7.9	10	10	10	10	10
Houston Pilots F - 63/64	10	10	10	10	10	7.9	7.9	4.9	0.5	0.5	0.3	5.9	6.9	6.9	6.9	6.9	6.9	6.9	7.9	10	10	10	10	10
Houston Pilots E - 51/52	10	10	10	10	10	9	9	5.9	1.6	1.6	0.3	4.9	6.9	6.9	5.9	6.9	6.9	5.9	6.9	10	10	10	10	10
Houston Pilots D - 37/38	10	10	10	10	10	9	10	6.9	3.9	1.6	1.1	4.9	6.9	6.9	5.9	6.9	6.9	5.9	6.9	10	10	10	10	10
Houston Pilots C - 25/26	10	10	10	10	10	10	10	7.9	3.9	1.6	1.1	5.9	6.9	6.9	5.9	6.9	5.9	4.9	6.9	10	10	10	10	10
Houston Pilots B - 11/12	10	10	10	10	10	10	10	7.9	4.9	5.9	1.1	3.9	6.9	6.9	5.9	6.9	5.9	4.9	6.9	10	10	10	10	10
Houston Pilots A - 1 & 2 Bravo	10	10	10	10	10	10	10	9	6.9	6.9	2	1.6	4.9	3.9	3.9	3.9	3.9	2.9	4.9	6.9	9	10	10	10

**NOTE:** This is automated data that may/may not agree with the official BAM thinking that’s found on the daily slides or special visibility report slides. This data should be used as a guide only

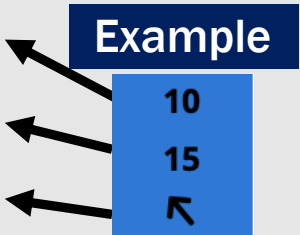
# Houston Pilots Wind Chart



**Sustained Wind 10 Knots**

**Gusts 15 Knots**

**Wind from the SE**



Wind	Tue 4 pm	Tue 5 pm	Tue 6 pm	Tue 7 pm	Tue 8 pm	Tue 9 pm	Tue 10 pm	Tue 11 pm	Wed 12 am	Wed 1 am	Wed 2 am	Wed 3 am	Wed 4 am	Wed 5 am	Wed 6 am	Wed 7 am	Wed 8 am	Wed 9 am	Wed 10 am	Wed 11 am	Wed 12 pm	Wed 1 pm	Wed 2 pm	Wed 3 pm
Houston Pilots N - 610 Bridge	10	9	8	6	6	5	5	5	6	6	7	8	8	9	10	10	10	10	10	10	10	10	10	12
	21	20	16	14	13	12	10	10	12	13	15	16	17	18	20	20	20	20	21	21	22	22	22	22
	↗	↗	↗	↗	↗	↗	→	→	↘	↘	↓	↓	↓	↓	↓	↓	↓	↓	↓	↓	↓	↓	↓	↓
Houston Pilots M - Kinder 1	10	9	8	6	6	5	5	5	5	6	7	8	8	9	9	10	10	10	10	10	10	10	10	10
	21	20	16	14	13	12	10	10	12	13	15	16	17	18	20	20	20	20	20	21	21	22	22	22
	↗	↗	↗	↗	↗	↗	→	→	↘	↘	↓	↓	↓	↓	↓	↓	↓	↓	↓	↓	↓	↓	↓	↓
Houston Pilots L - Greens Bayou	10	9	8	6	6	5	3	5	5	6	6	8	8	9	9	9	10	10	10	10	10	10	10	10
	20	18	16	14	12	10	10	10	12	13	14	15	17	18	18	18	20	20	20	21	21	21	22	22
	↗	↗	↗	↗	↗	↗	→	→	→	↘	↓	↓	↓	↓	↓	↓	↓	↓	↓	↓	↓	↓	↓	↓
Houston Pilots K - Shell Crude	10	9	8	6	6	5	5	5	5	6	6	8	8	8	9	9	10	10	10	10	10	10	10	10
	21	18	16	14	13	10	9	10	12	12	14	15	17	18	18	20	20	20	20	21	21	21	22	22
	↗	↗	↗	↗	↗	↗	→	→	→	↘	↓	↓	↓	↓	↓	↓	↓	↓	↓	↓	↓	↓	↓	↓
Houston Pilots J - Lynchburg Ferries	10	9	8	6	6	5	3	3	5	6	6	7	8	8	9	9	10	10	10	10	10	10	12	12
	20	18	15	14	12	10	9	9	10	12	14	15	16	17	18	18	20	20	20	20	20	21	22	22
	↗	↗	↗	↗	↗	↗	→	→	→	↘	↓	↓	↓	↓	↓	↓	↓	↓	↓	↓	↓	↓	↓	↓
Houston Pilots I - Exxon 3	13	12	10	9	8	7	6	7	7	8	9	10	12	13	13	14	14	13	13	13	13	13	13	13
	21	20	16	15	14	12	10	12	12	13	15	15	17	18	20	20	21	20	20	21	21	21	22	22
	↗	↗	↗	↗	↗	↗	↗	↗	→	↘	↓	↓	↓	↓	↓	↓	↓	↓	↓	↓	↓	↓	↓	↓
Houston Pilots H - Morgans Point	13	12	10	9	8	7	6	6	7	7	8	10	10	13	13	13	13	13	13	13	13	13	13	13
	21	20	17	15	14	13	10	10	12	12	14	15	17	18	20	20	21	20	21	21	21	21	22	22
	↗	↗	↗	↗	↗	↗	↗	→	→	↘	↓	↓	↓	↓	↓	↓	↓	↓	↓	↓	↓	↓	↓	↓
Houston Pilots G - 75/76	14	13	12	10	10	8	8	8	8	8	9	10	13	14	15	16	16	15	15	14	13	13	13	14
	23	22	18	16	15	14	13	12	12	13	15	16	18	20	22	23	23	23	23	22	22	22	22	22
	↗	↗	↗	↗	↗	↗	↗	→	→	↘	↓	↓	↓	↓	↓	↓	↓	↓	↓	↓	↓	↓	↓	↓
Houston Pilots F - 63/64	13	13	12	10	10	8	8	8	8	8	9	10	13	13	15	16	16	16	15	15	14	13	13	13
	23	22	18	16	15	14	13	12	12	12	14	15	17	20	22	23	24	23	23	23	22	22	22	22
	↗	↗	↗	↗	↗	↗	↗	→	→	↘	↓	↓	↓	↓	↓	↓	↓	↓	↓	↓	↓	↓	↓	↓
Houston Pilots E - 51/52	13	13	13	10	10	9	8	8	8	8	8	10	12	13	15	16	16	17	16	15	14	13	13	13
	22	21	18	16	15	14	13	13	12	12	13	15	16	18	21	23	24	24	24	23	23	22	22	22
	↗	↗	↗	↗	↗	↗	↗	↗	↗	↘	↓	↓	↓	↓	↓	↓	↓	↓	↓	↓	↓	↓	↓	↓
Houston Pilots D - 37/38	13	13	12	10	10	9	8	8	8	8	8	10	10	13	15	16	17	17	16	15	15	14	14	14
	22	21	18	16	15	15	13	13	12	12	13	15	16	18	21	23	24	24	24	24	23	23	22	22
	↗	↗	↗	↗	↗	↗	↗	↗	↗	↘	↓	↓	↓	↓	↓	↓	↓	↓	↓	↓	↓	↓	↓	↓
Houston Pilots C - 25/26	13	13	12	10	10	9	8	8	8	7	8	9	10	13	14	16	16	17	17	15	15	15	14	14
	22	21	18	16	15	15	14	13	12	12	13	15	16	18	21	23	24	25	25	24	23	23	22	22
	↗	↗	↗	↗	↗	↗	↗	↗	↗	→	↓	↓	↓	↓	↓	↓	↓	↓	↓	↓	↓	↓	↓	↓
Houston Pilots B - 11/12	13	13	10	10	9	8	8	8	7	7	8	8	10	12	13	15	15	16	16	15	15	14	14	14
	20	18	17	15	15	15	14	13	13	12	13	15	15	17	20	22	23	24	24	23	22	22	22	22
	↗	↗	↗	↗	↗	↗	↗	↗	↗	→	↓	↓	↓	↓	↓	↓	↓	↓	↓	↓	↓	↓	↓	↓
Houston Pilots A - 1 & 2 Bravo	13	13	13	12	12	10	10	10	9	9	9	10	12	13	15	16	17	17	17	15	15	15	14	14
	21	20	18	17	17	16	15	15	15	14	15	15	16	20	22	23	24	25	26	25	24	23	22	22
	↗	↗	↗	↗	↗	↗	↗	↗	↗	↘	→	↓	↓	↓	↓	↓	↓	↓	↓	↓	↓	↓	↓	↓

**NOTE: This is automated data that may/may not agree with the official BAM thinking that's found on the daily slides.**  
**This data should be used as a guide only.**



# Houston Pilots: TUE. 02/03/2026

## Forecast Discussion

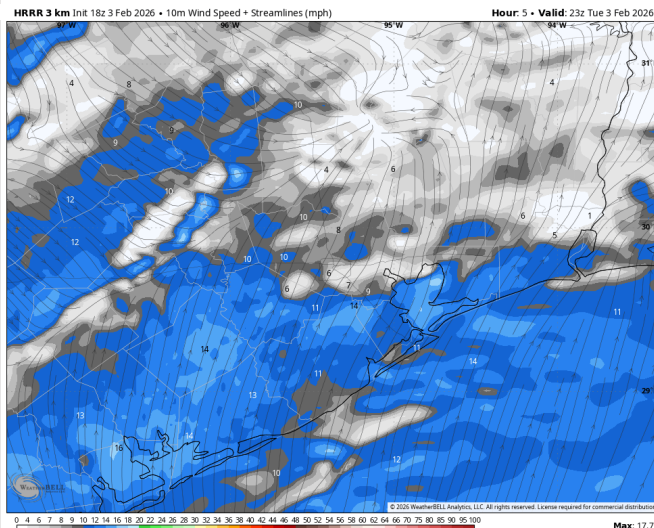
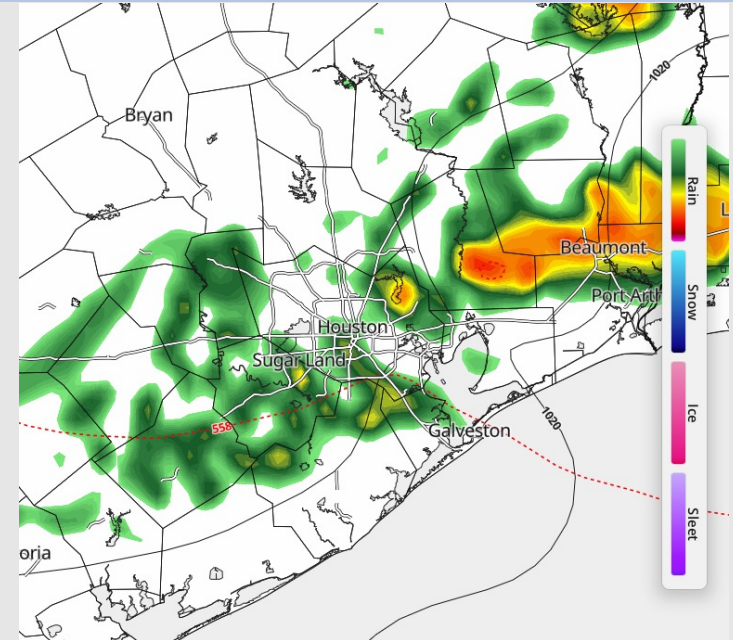
**Precip:** Showers and thunderstorms continue throughout the rest of the day, with the main wave of storms anticipated after 9 PM. No severe weather is anticipated.

**Wind:** Winds will be generally out of the SW for the rest of the day.  
**N of Morgan's Point:** Winds of 5- 10 kts. **S of Morgan's Point:** Winds of 8 – 13 kts. **Gusts up to 23 kts will be possible S of Morgan's Point through ~10PM.**

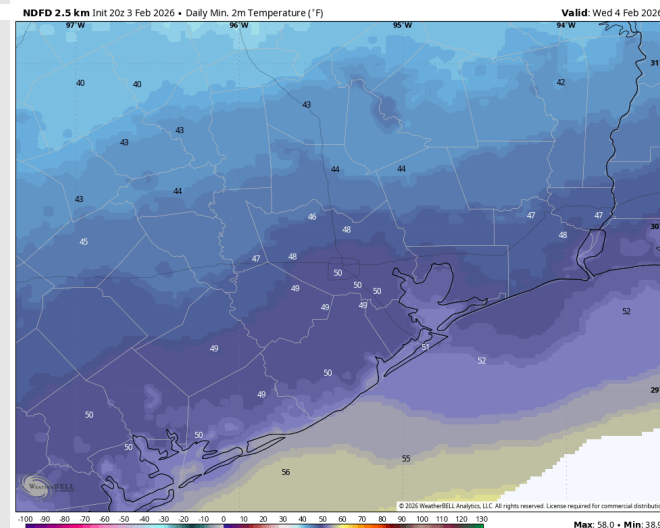
**Low Temps:** **N of Morgan's Point:** Near 50 F. **S of Morgan's Point:** Low 50s F.

**Visibility:** No fog is anticipated this evening and overnight.

## Precip Image: 9 PM CT



Wind Speed:  
5 PM CT



Low Temps  
WED AM

# Houston Pilots: WED. 02/04/2026

## Forecast Discussion

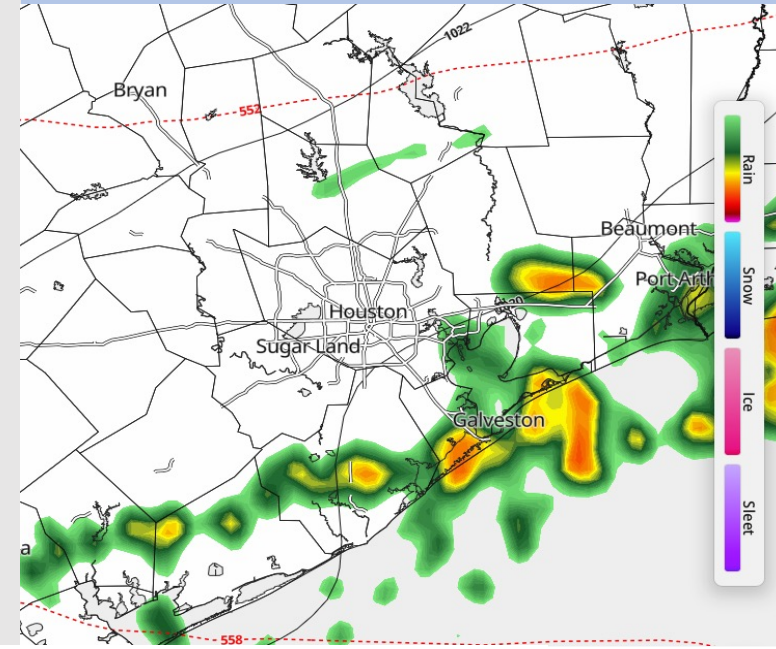
**Precip:** Thunderstorms exiting completely by 4AM. Dry thereafter.

**Wind:** Winds will quickly settle to be out of the N/NE after 2AM. **N of Morgan's Point:** Winds of 8 – 13 kts through the day. **Gusts of 23 – 28 kts through 8PM.** **S of Morgan's Point:** Winds of 15 – 20 kts, lowering to 10 – 15 kts from 1PM to 8PM. **Boarding Station:** Winds of 15 – 20 kts through 6AM, increasing to 20 – 25 kts for the rest of the day. **Gusts of 23 – 28 kts for Stations S of Morgan's Point throughout the day. (28 – 33 kts at the Boarding Station).**

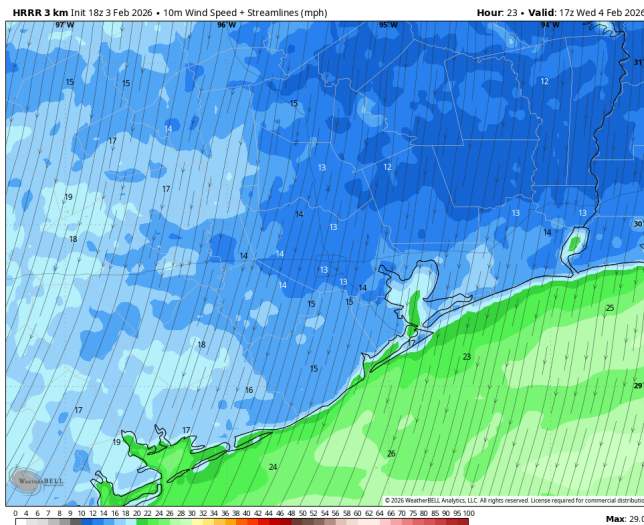
**High Temps:** **N of Morgan's Point:** Mid 60s F. **S of Morgan's Point:** Low 60s F.

**Visibility:** No visibility concerns for WED.

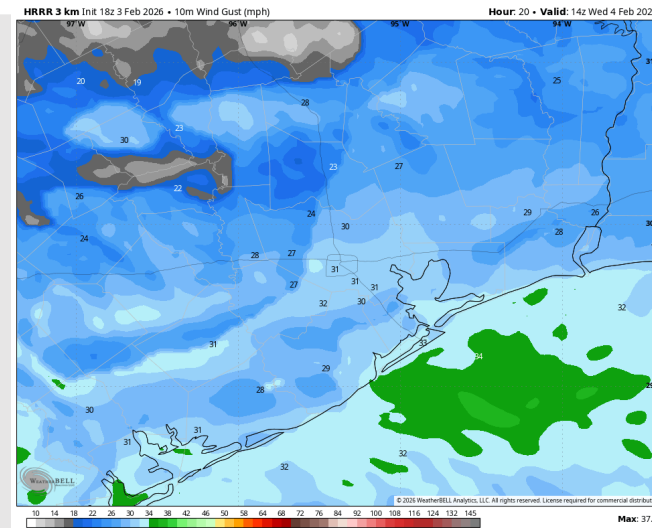
## Precip Image: 1 AM CT



**Wind Speed:**  
**11 AM CT**



**PEAK GUSTS**  
**8 AM WED**



## Forecast Discussion

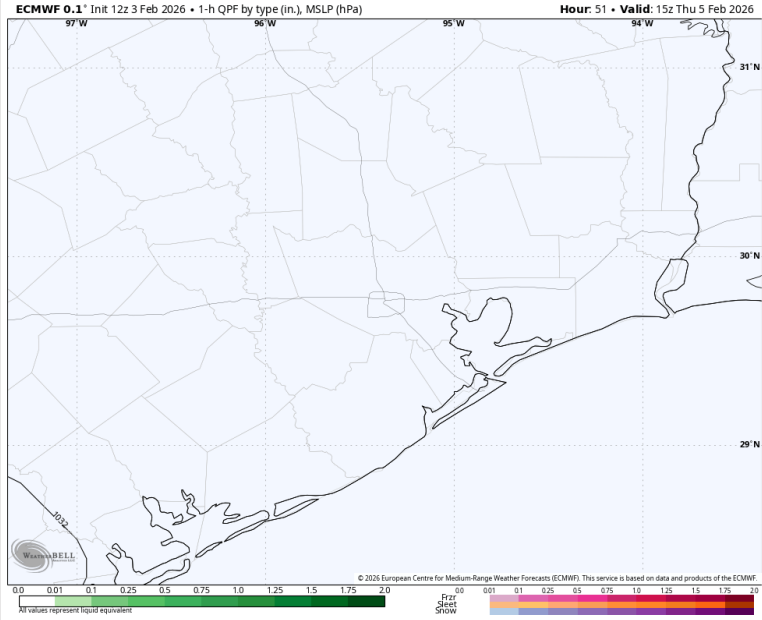
**Precip:** Dry conditions favored.

**Wind:** Winds out of the N through 1 PM, turning to out of the SW by 5 PM. **N of Morgan's Point:** Winds of 3 – 8 kts through the day. **S of Morgan's Point:** Winds of 10 – 15 kts through 8 AM, 8 – 13 kts thereafter. **Boarding Station:** Winds of 14 – 19 kts through 6 AM, then 10 – 15 kts thereafter. **Gusts up to 22 kts through 6AM for Stations S of Morgan's Point.**

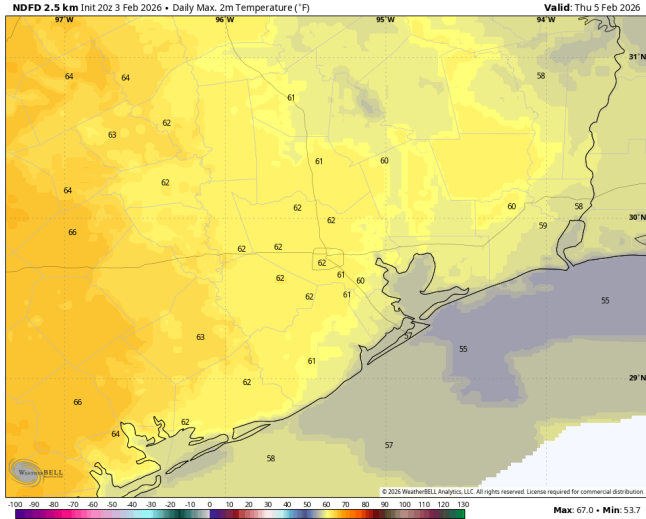
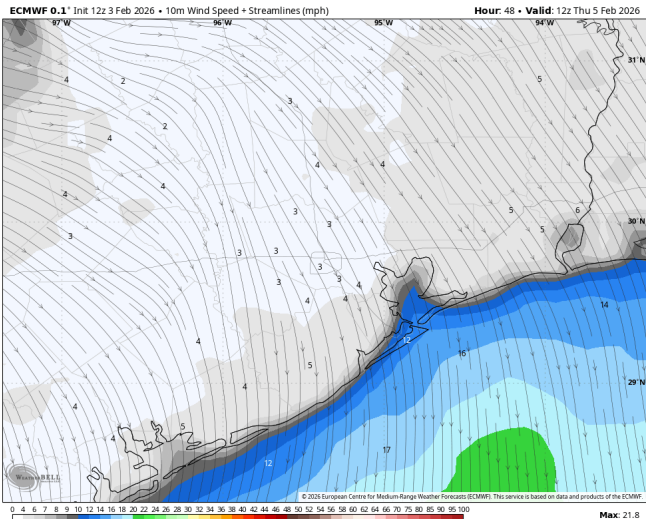
**High Temps:** **N of Morgan's Point:** Low 60s F. **S of Morgan's Point:** Upper 50s F.

**Visibility:** No visibility concerns for THU.

## Precip Image: 9 AM CT



Wind Speed:  
6 AM CT

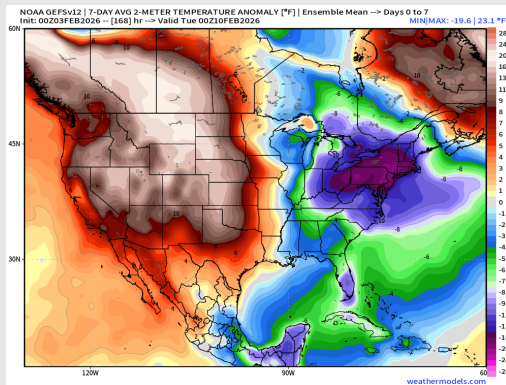


High Temps  
THU

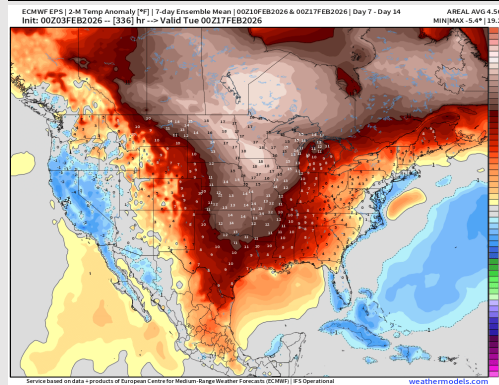


# Houston Pilots: 02/03/2026

## Next 7 Day Temperature Departure



## 8-14 Day Temperature Departure

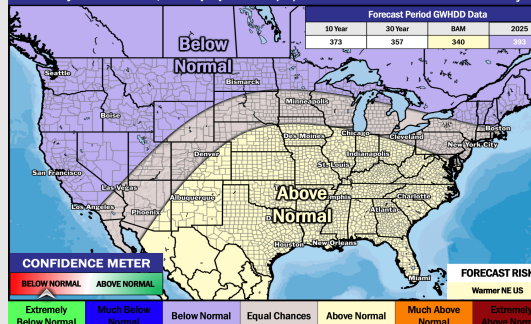


## 15-30 Day Temperature Departure

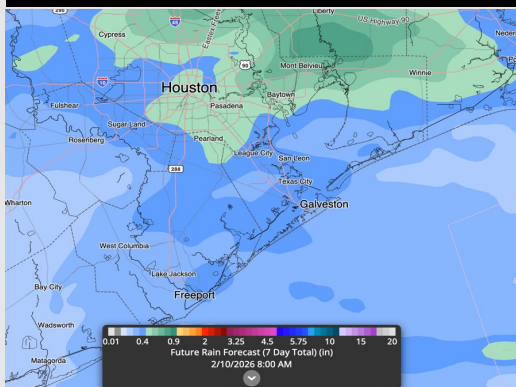
### Week ¾ Temperature Outlook

February 17 - March 2, 2026 | Updated: 2/3/26

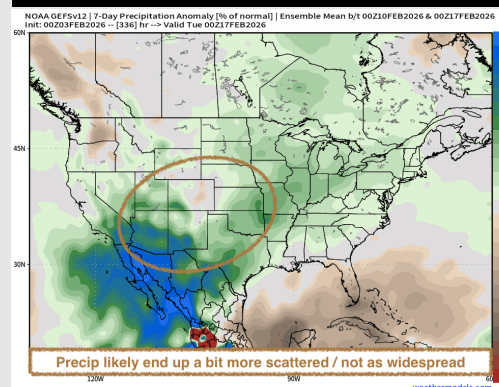
Forecaster: Bryan



## Next 7 Day Total Precipitation



## 8-14 Day % of Average Precip.

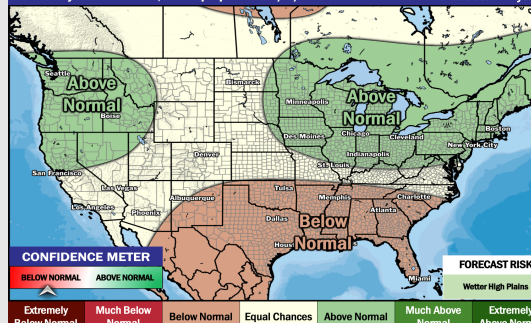


## 15-30 Day % of Average Precip.

### Week ¾ Precipitation Outlook

February 17 - March 2, 2026 | Updated: 2/3/26

Forecaster: Bryan



- Above normal temps are favored over the next 7 days with rain chances Tuesday into Wednesday.
- Above normal temperatures and above normal rain chances in the Week 2 period.
- Above normal temperatures and below normal rainfall expected for late February and the start of March.