

South Florida Stadium

2026 Miami E-Prix

Forecast Made: Friday, January 30, 2026



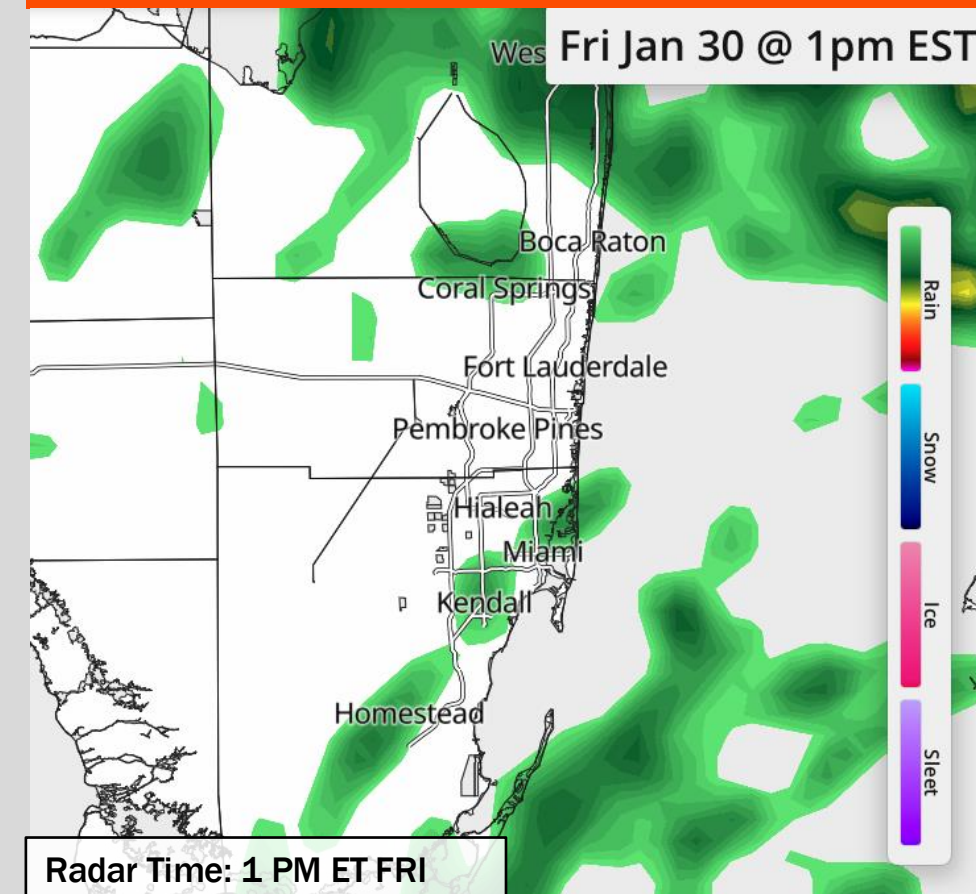
Forecast Notes For FRI (1/30/26)

9 AM - 12 PM FRI: Additional rain showers to move in after 9AM, with scattered coverage (40%).

12 - 4 PM FRI: Scattered showers (40%), becoming more isolated (20%) after 3PM. Lightning not expected.

4 PM - 8 PM FRI: Isolated drizzle to persist through 6PM before dry conditions come into play.

FRI Radar Snapshot



Temperature Notes

Temperatures will top out near 70 F this afternoon, dropping into the lower 60s this evening.

Heat Index Notes

Heat index values will not be a concern for the day FRI.

Additional Notes

Light NW winds through the day. Total day time accumulations scattered 0.03" to 0.07". No severe weather/lightning expected.

South Florida Stadium

2026 Miami E-Prix

Forecast Made: Friday, January 30, 2026



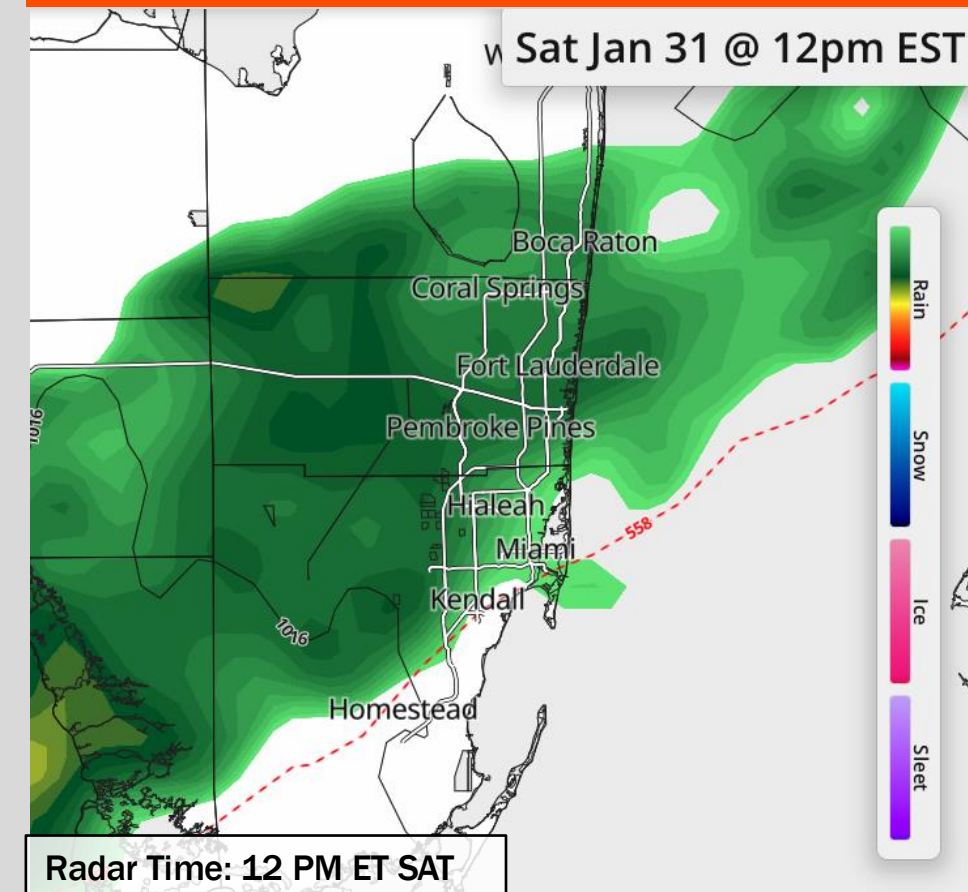
Forecast Notes For SAT (1/31/26)

7 AM - 12 PM SAT: Isolated light showers work in after 8AM, with the main line of showers arriving ~12PM. Lightning not expected.

12 - 4 PM SAT: Rain lingering through 3PM. Dry conditions favored thereafter. Sustained winds out of the NW at 8 - 13 MPH with gusts of 20 - 25 MPH.

4 PM - 8 PM SAT: Dry conditions favored. Winds out of the NW sustained around 15 - 20 MPH. Gusts of 25 - 30 MPH.

SAT Radar Snapshot



Temperature Notes

Temperatures into the Mid 60's F by 12 PM, dropping to the mid 50's F by 7 PM.

Heat Index Notes

Heat index values will not be a concern for the day SAT.

Additional Notes

Scattered rainfall of 0.05" to 0.1". Rain chances are associated with a cold front that will bring in gusty winds after it passes.

South Florida Stadium

2026 Miami E-Prix

Forecast Made: Friday, January 30, 2026



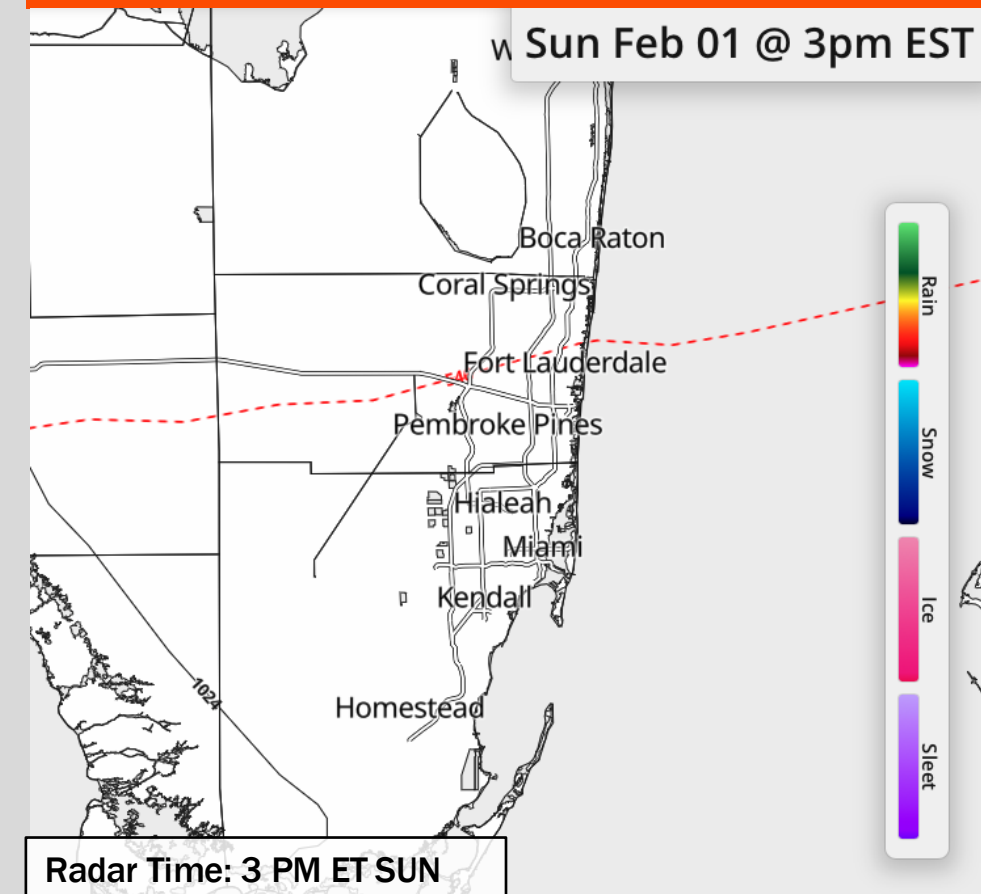
Forecast Notes For SUN (2/1/26)

7 AM - 12 PM SUN: Favoring dry conditions.

12 - 4 PM SUN: Favoring dry conditions

4 PM - 8 PM SUN: Favoring dry conditions.

SUN Radar Snapshot



Temperature Notes

Temperatures near 34 – 36 F around 7 AM SUN AM. High temperatures into the PM near 52 F.

Wind Chill Notes

Wind chills near 26 F by 7 AM. Wind chills into the mid 40's to near 50 in the afternoon.

Additional Notes

NW winds through day sustained around 9 – 13 MPH and gusts of 24 – 28 MPH through 7PM before calming.