

# Houston Pilots Forecast Package



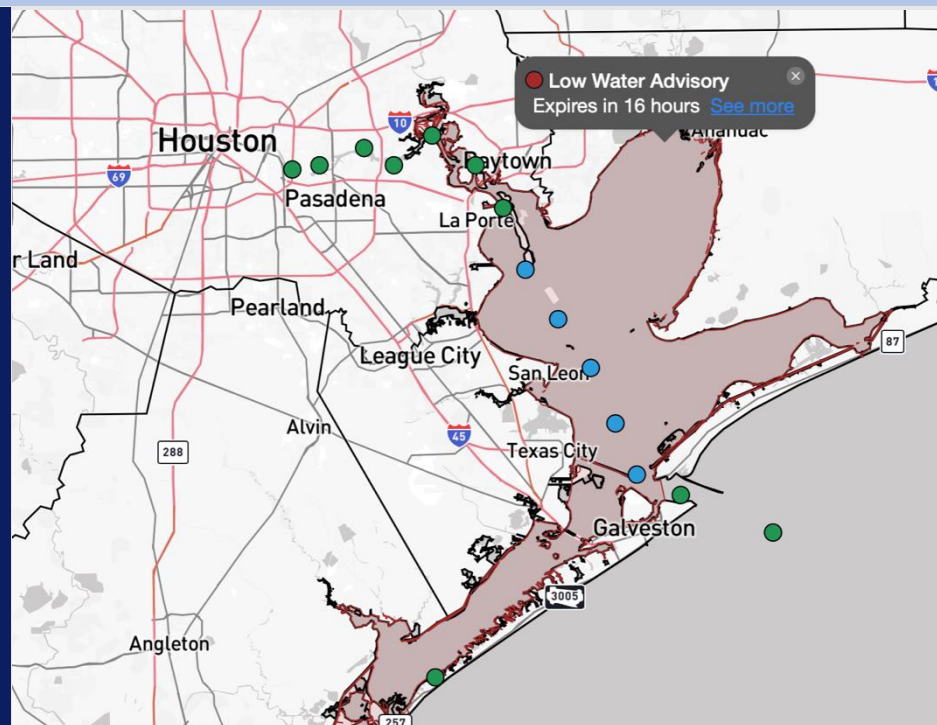
Updated: 1:50 AM CT

Thursday, January 1, 2026

Forecaster: Hope Kleitsch

## Weather Headlines

- A few gusts up to 20 kts will be possible THU, with gusts increasing up to 30 kts on FRI.
- Dry conditions are favored for the next 3 days.
- Low-end chances for fog return Friday and Saturday.



Current Radar: 1:50 AM CT

As always, please do not hesitate to reach out to us with any forecast questions at (317)-560-8122. Press 1 for forecast questions.



You can also access real-time forecast updates and 24/7 meteorological chat assistance on your Clarity app.

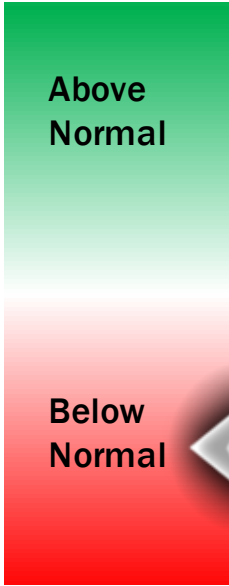
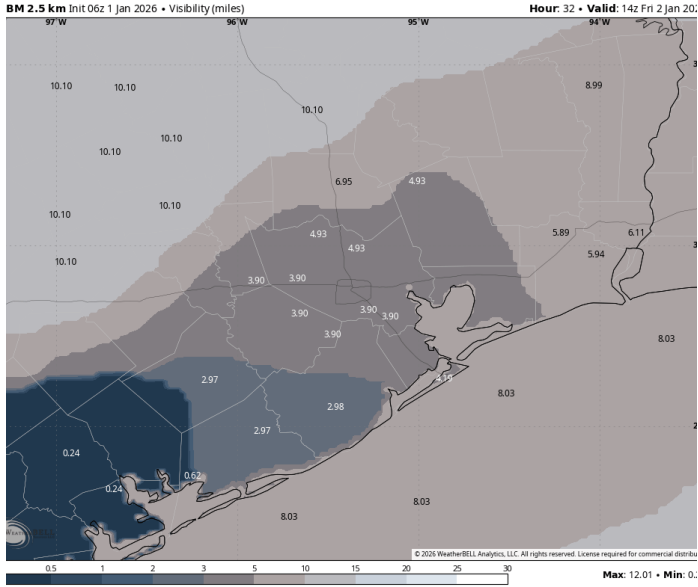
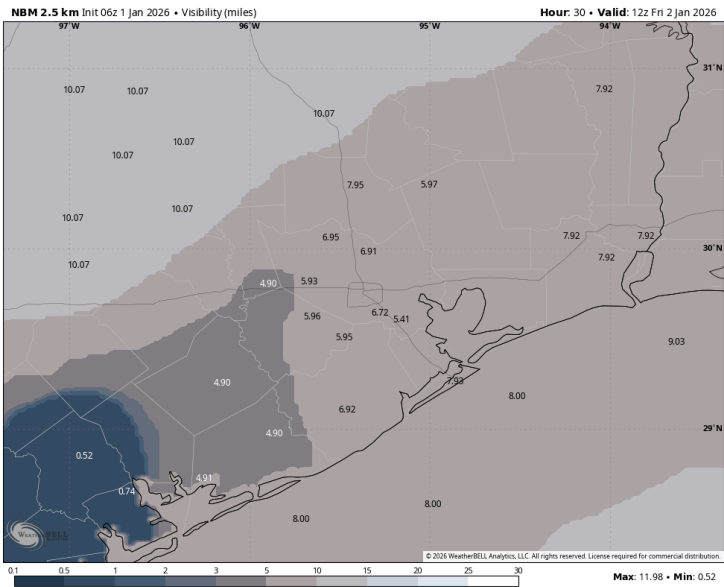
# Houston Pilots Visibility Report



6 AM CT FRI VISIBILITY

8 AM CT FRI VISIBILITY

Confidence



TIMEFRAME DISCUSSED	THREAT
1 AM – 9 AM FRI	Low-End

Isolated potential for fog, mainly for **Stations N of Morgan’s Point**, will be in play as early as 1AM Friday.

Isolated pockets of reduced visibilities of 1 – 2 miles will continue through 9AM, with the greatest timeframe of fog potential from 4AM to 8AM.

At this time, we are not favoring any pockets of dense fog for any Stations.

Most Stations will likely stay fog-free; however, isolated pockets will still be possible.

# Houston Pilots Extended Range Visibility Report



**Sunday 01/04/2026**

Fog is not favored Sunday.

## Forecast Confidence



**Tuesday 01/06/2026**

Fog will be possible N of Morgan’s Point from 3 AM – 9 AM.

## Forecast Confidence



**Monday 01/05/2026**

Fog will be possible N of Morgan’s Point from 3 AM – 9 AM.

## Forecast Confidence



## Chance for Fog

Sunday AM	Unlikely
Sunday PM	Unlikely
Monday AM	Possible
Monday PM	Unlikely
Tuesday AM	Possible
Tuesday PM	Unlikely

# Houston Pilots Visibility Chart (miles)



Visibility	Thu 3 am	Thu 4 am	Thu 5 am	Thu 6 am	Thu 7 am	Thu 8 am	Thu 9 am	Thu 10 am	Thu 11 am	Thu 12 pm	Thu 1 pm	Thu 2 pm	Thu 3 pm	Thu 4 pm	Thu 5 pm	Thu 6 pm	Thu 7 pm	Thu 8 pm	Thu 9 pm	Thu 10 pm	Thu 11 pm	Fri 12 am	Fri 1 am	Fri 2 am
Houston Pilots N - 610 Bridge	10	10	10	10	10	10	10	10	10	10	10	10	10	10	10	10	10	10	10	10	10	10	10	10
Houston Pilots M - Kinder 1	10	10	10	10	10	10	10	10	10	10	10	10	10	10	10	10	10	10	10	10	10	10	10	10
Houston Pilots L - Greens Bayou	10	10	10	10	10	10	10	10	10	10	10	10	10	10	10	10	10	10	10	10	10	10	10	10
Houston Pilots K - Shell Crude	10	10	10	10	10	10	10	10	10	10	10	10	10	10	10	10	10	10	10	10	10	10	10	10
Houston Pilots J - Lynchburg Ferries	10	10	10	10	10	10	10	10	10	10	10	10	10	10	10	10	10	10	10	10	10	10	10	10
Houston Pilots I - Exxon 3	10	10	10	10	10	10	10	10	10	10	10	10	10	10	10	10	10	10	10	10	10	10	10	10
Houston Pilots H - Morgans Point	10	10	10	10	10	10	10	10	10	10	10	10	10	10	10	10	10	10	10	10	10	10	10	10
Houston Pilots G - 75/76	10	10	10	10	10	10	10	10	10	10	10	10	10	10	10	10	10	10	10	10	10	10	10	8
Houston Pilots F - 63/64	10	10	10	10	10	10	10	10	10	10	10	10	10	10	10	10	10	10	10	10	10	10	10	8
Houston Pilots E - 51/52	10	10	10	10	10	10	10	10	10	10	10	10	10	10	10	10	10	10	10	10	10	10	10	8
Houston Pilots D - 37/38	10	10	10	10	10	10	10	10	10	10	10	10	10	10	10	10	10	10	10	10	10	10	10	8
Houston Pilots C - 25/26	10	10	10	10	10	10	10	10	10	10	10	10	10	10	10	10	10	10	10	10	10	10	10	8
Houston Pilots B - 11/12	10	10	10	10	10	10	10	10	10	10	10	10	10	10	10	10	10	10	10	10	10	10	10	8
Houston Pilots A - 1 & 2 Bravo	10	10	10	10	10	10	10	10	10	10	10	10	10	10	10	10	10	10	10	10	10	9	9	9

NOTE: This is automated data that may/may not agree with the official BAM thinking that’s found on the daily slides or special visibility report slides. This data should be used as a guide only

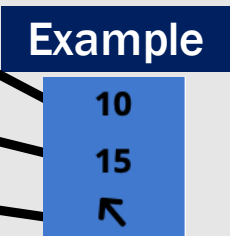
# Houston Pilots Wind Chart



## Forecast Confidence



Sustained Wind 10 Knots  
Gusts 15 Knots  
Wind from the SE



Wind	Thu 3 am	Thu 4 am	Thu 5 am	Thu 6 am	Thu 7 am	Thu 8 am	Thu 9 am	Thu 10 am	Thu 11 am	Thu 12 pm	Thu 1 pm	Thu 2 pm	Thu 3 pm	Thu 4 pm	Thu 5 pm	Thu 6 pm	Thu 7 pm	Thu 8 pm	Thu 9 pm	Thu 10 pm	Thu 11 pm	Fri 12 am	Fri 1 am	Fri 2 am
Houston Pilots N - 610 Bridge	3	3	3	3	3	2	2	3	3	6	6	7	8	8	8	8	8	8	8	8	8	8	8	8
	9	9	8	8	7	7	7	7	9	10	14	15	16	16	17	17	16	17	17	17	18	18	18	20
	↗	↗	↗	↗	↗	↗	↗	↗	↗	↗	↗	↗	↗	↗	↗	↗	↗	↗	↗	↗	↗	↗	↗	
Houston Pilots M - Kinder 1	3	3	3	3	3	2	2	3	3	6	6	7	8	8	8	8	8	8	8	8	8	8	8	8
	9	9	8	8	7	7	7	7	9	10	14	15	16	16	16	17	16	17	17	17	18	18	18	18
	↗	↗	↗	↗	↗	↗	↗	↗	↗	↗	↗	↗	↗	↗	↗	↗	↗	↗	↗	↗	↗	↗	↗	
Houston Pilots L - Greens Bayou	3	3	3	3	3	2	2	3	3	5	6	7	7	8	8	8	8	8	8	8	8	8	8	8
	9	9	8	8	7	7	7	7	9	10	13	14	15	15	16	17	16	16	17	17	18	18	17	18
	↗	↗	↗	↗	↗	↗	↗	↗	↗	↗	↗	↗	↗	↗	↗	↗	↗	↗	↗	↗	↗	↗	↗	
Houston Pilots K - Shell Crude	3	3	3	3	3	3	3	3	3	6	6	7	8	8	8	8	8	8	8	8	8	8	8	8
	9	9	8	8	7	7	7	7	9	10	13	14	15	15	16	17	16	16	17	16	17	18	18	18
	↗	↗	↗	↗	↗	↗	↗	↗	↗	↗	↗	↗	↗	↗	↗	↗	↗	↗	↗	↗	↗	↗	↗	
Houston Pilots J - Lynchburg Ferries	3	3	3	3	2	2	2	3	3	5	6	6	7	8	8	8	8	8	8	8	8	8	8	8
	9	9	8	7	7	7	6	7	9	10	13	14	15	15	16	17	16	16	16	16	17	17	17	18
	↗	↗	↗	↗	↗	↗	↗	↗	↗	↗	↗	↗	↗	↗	↗	↗	↗	↗	↗	↗	↗	↗	↗	
Houston Pilots I - Exxon 3	7	7	6	6	6	5	5	3	5	6	6	8	8	10	10	12	12	12	12	12	12	13	13	13
	10	10	9	9	8	8	8	8	9	10	13	14	15	16	17	17	18	18	18	18	18	18	20	20
	↗	↗	↗	↗	↗	↗	↗	↗	↗	↗	↗	↗	↗	↗	↗	↗	↗	↗	↗	↗	↗	↗	↗	
Houston Pilots H - Morgans Point	7	7	6	6	6	5	5	3	5	6	6	7	8	9	10	12	12	12	12	10	12	12	12	13
	10	10	9	9	8	8	8	8	9	10	12	14	15	16	17	17	18	18	18	17	18	18	18	20
	↗	↗	↗	↗	↗	↗	↗	↗	↗	↗	↗	↗	↗	↗	↗	↗	↗	↗	↗	↗	↗	↗	↗	
Houston Pilots G - 75/76	8	8	8	7	6	6	6	5	6	6	6	6	8	10	10	13	13	13	13	13	13	13	14	14
	12	12	10	9	9	8	8	8	9	10	12	14	15	17	18	18	18	20	20	20	20	20	20	21
	↗	↗	↗	↗	↗	↗	↗	↗	↗	↗	↗	↗	↗	↗	↗	↗	↗	↗	↗	↗	↗	↗	↗	
Houston Pilots F - 63/64	8	8	8	7	6	6	6	6	6	6	6	6	8	9	10	12	13	13	13	13	13	13	13	14
	12	12	10	9	9	8	8	8	9	9	10	13	15	16	17	18	18	18	18	20	20	20	20	21
	↗	↗	↗	↗	↗	↗	↗	↗	↗	↗	↗	↗	↗	↗	↗	↗	↗	↗	↗	↗	↗	↗	↗	
Houston Pilots E - 51/52	8	8	8	7	6	6	6	5	5	5	6	6	8	9	10	10	12	12	12	12	13	13	13	14
	12	12	10	10	9	8	8	8	9	9	10	12	14	16	16	17	17	18	18	18	20	20	20	21
	↗	↗	↗	↗	↗	↗	↗	↗	↗	↗	↗	↗	↗	↗	↗	↗	↗	↗	↗	↗	↗	↗	↗	
Houston Pilots D - 37/38	8	8	8	7	6	6	6	5	5	5	6	6	8	9	10	10	10	12	12	12	13	13	14	15
	12	12	12	10	9	9	8	8	9	9	10	12	14	15	16	16	16	17	17	18	20	20	21	22
	↗	↗	↗	↗	↗	↗	↗	↗	↗	↗	↗	↗	↗	↗	↗	↗	↗	↗	↗	↗	↗	↗	↗	
Houston Pilots C - 25/26	8	8	8	7	6	6	6	5	6	6	6	6	8	9	9	10	10	10	10	12	13	13	13	14
	12	12	12	10	10	9	8	9	9	9	10	12	13	15	15	15	16	16	17	18	20	20	21	22
	↗	↗	↗	↗	↗	↗	↗	↗	↗	↗	↗	↗	↗	↗	↗	↗	↗	↗	↗	↗	↗	↗	↗	
Houston Pilots B - 11/12	8	8	7	7	6	6	6	5	6	6	6	6	7	8	8	8	8	9	10	10	10	12	13	13
	12	12	12	10	10	9	9	9	9	9	9	10	13	15	15	14	14	15	16	17	18	20	20	21
	↗	↗	↗	↗	↗	↗	↗	↗	↗	↗	↗	↗	↗	↗	↗	↗	↗	↗	↗	↗	↗	↗	↗	
Houston Pilots A - 1 & 2 Bravo	10	10	10	9	8	8	7	6	6	6	5	6	6	7	8	9	10	10	12	13	14	15	15	15
	15	15	14	14	13	12	10	10	9	10	9	10	12	14	14	15	15	16	18	20	20	22	22	23
	↗	↗	↗	↗	↗	↗	↗	↗	↗	↗	↗	↗	↗	↗	↗	↗	↗	↗	↗	↗	↗	↗	↗	

NOTE: This is automated data that may/may not agree with the official BAM thinking that's found on the daily slides.  
This data should be used as a guide only.

# Houston Pilots: THU. 01/01/2026

## Forecast Discussion

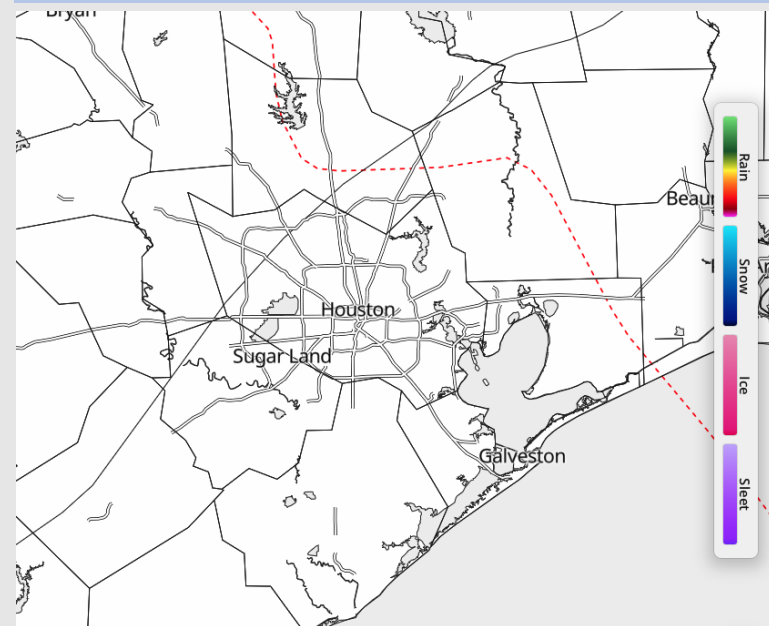
**Precip:** Dry conditions favored.

**Wind:** Winds will be generally out of the W/SW until around 12 PM when winds shift to blow from the S. **N of Morgan's Point:** Winds of 3 – 8 kts. **S of Morgan's Point:** Winds of 6 – 11 kts. **A few gusts up to 20 kts are possible for Stations S of Morgans Point between 3 – 8 PM.**

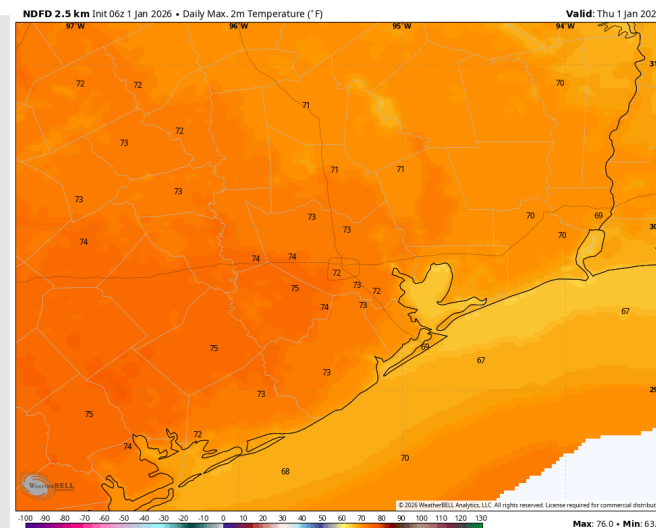
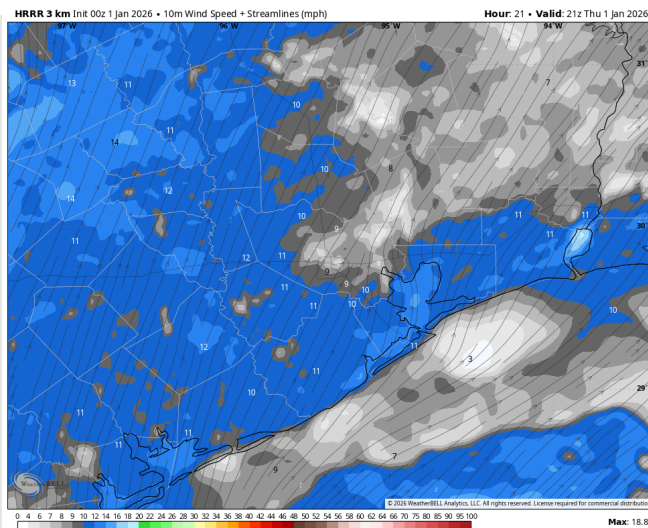
**High Temps:** **N of Morgan's Point:** Low 70s F. **S of Morgan's Point:** Upper 60s F.

**Visibility:** No fog concerns expected on Thursday.

## Precip Image: 3 PM CT



**Wind Speed:**  
3 PM CT



**High Temps**  
**THU**



# Houston Pilots: FRI. 01/02/2026

## Forecast Discussion

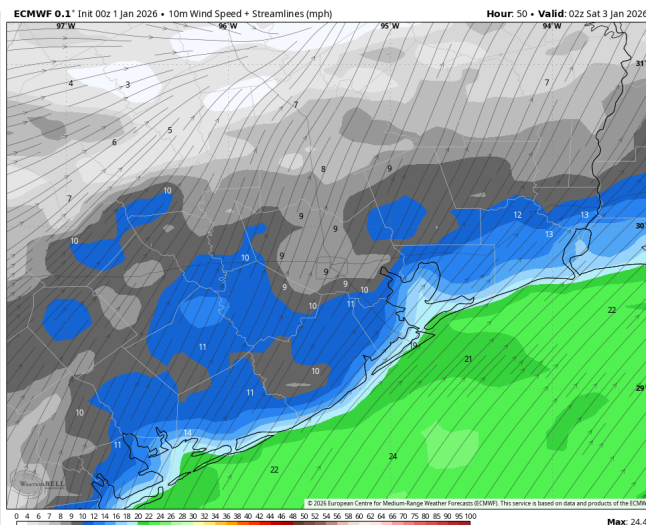
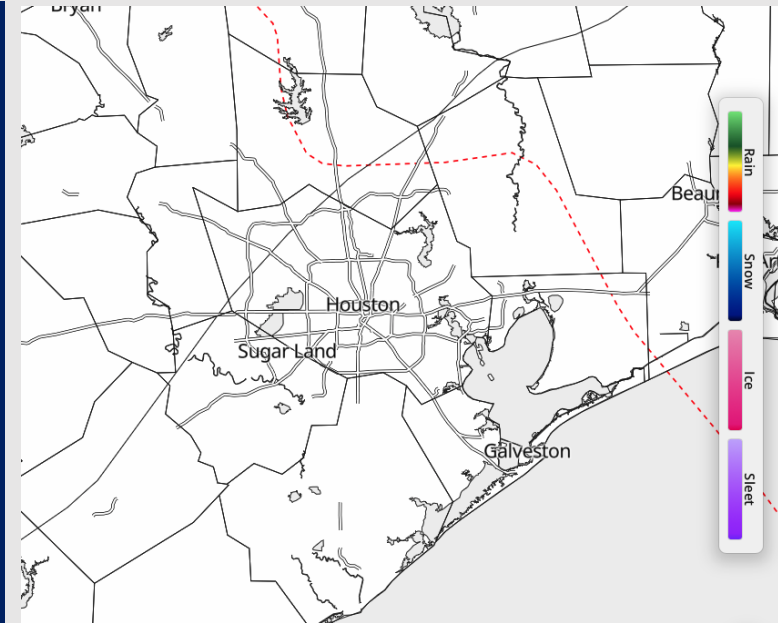
**Precip:** Dry conditions favored.

**Wind:** Winds will be generally out of the SW. **N of Morgan's Point:** Winds of 8 – 13 kts. **S of Morgan's Point:** Winds between 13 – 18 kts with winds from Station 37/38 to the Boarding Station increasing to 18 – 22 kts after 10 AM. **Wind gusts up to 20 kts will be possible for all Stations, with gusts increasing to up to 30 kts from 12 PM to 5 PM. After then, gusts up to 25 kts will be possible mainly for Stations 37/38 to the Boarding Station.**

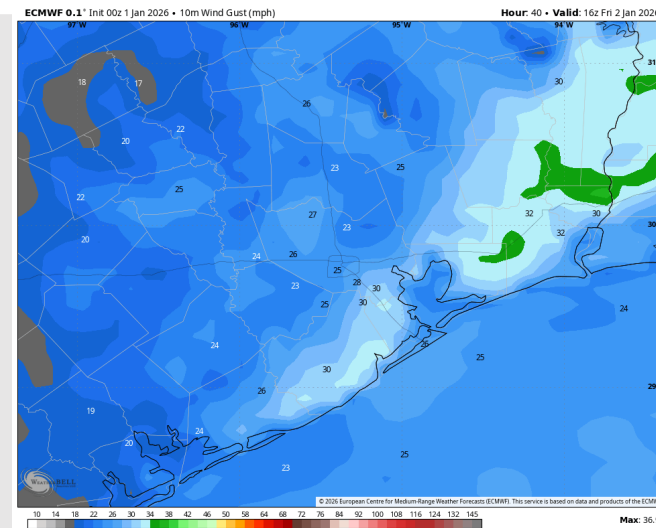
**High Temps:** **N of Morgan's Point:** Low 80s F. **S of Morgan's Point:** Mid 70s F.

**Visibility:** Fog will be possible, mainly for Stations N of Morgan's point from 1 AM to 9 AM. Confidence is lower for Stations S of Morgan's point.

## Precip Image: 1 PM CT



**Wind Speed:**  
**8 PM CT**



**PEAK Gusts**  
**Friday**

# Houston Pilots: SAT. 01/03/2026

## Forecast Discussion

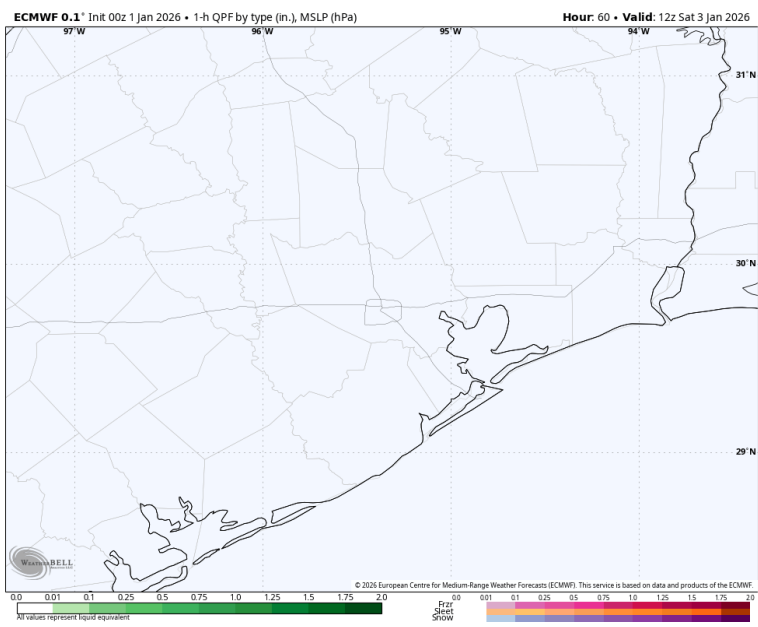
**Precip:** Dry conditions favored.

**Wind:** Winds will be out of the W/SW, rotating to be out of the N after 11AM. **N of Morgan's Point:** Winds of 5 – 10 kts through the day. **S of Morgan's Point:** Winds will generally range from 8 – 13 kts. Winds at the Boarding Station will be at 15 – 20 kts through 6 AM. **Wind gusts up to 23 kts in play for all Stations through 6PM.**

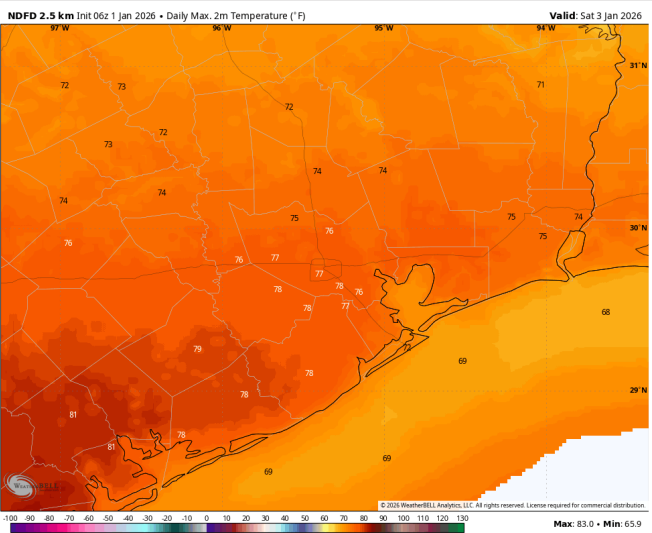
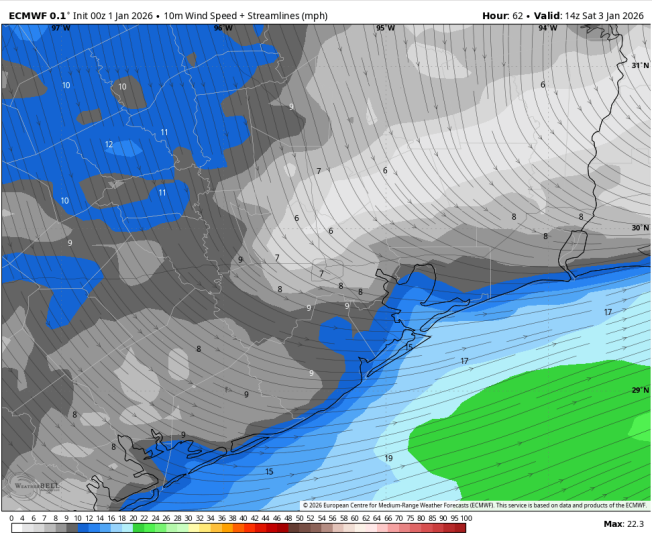
**High Temps:** **N of Morgan's Point:** Upper 70s F. **S of Morgan's Point:** Low 70s F.

**Visibility:** Isolated pockets of fog will be possible N of Morgan's Point from 2 – 6AM.

## Precip Image: 6 AM CT



**Wind Speed:**  
8 AM CT

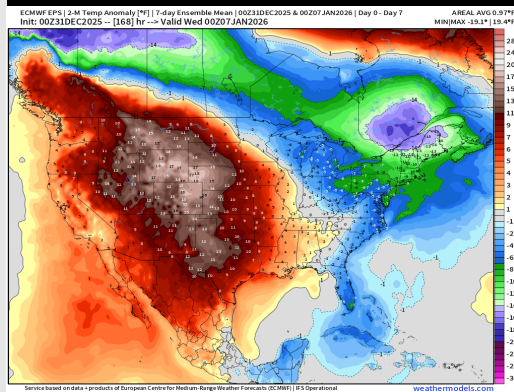


**High Temps**  
**SAT**

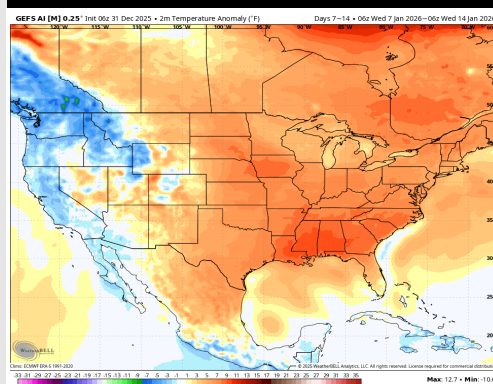


# Houston Pilots: 01/01/2026

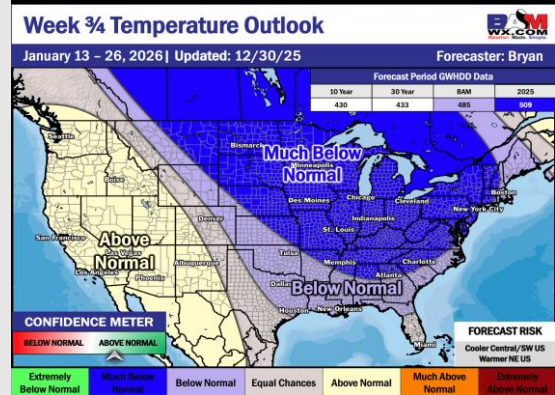
## Next 7 Day Temperature Departure



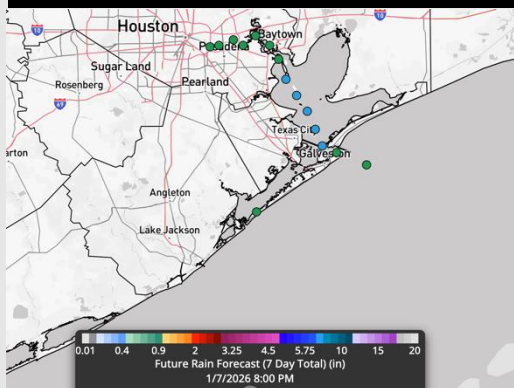
## 8-14 Day Temperature Departure



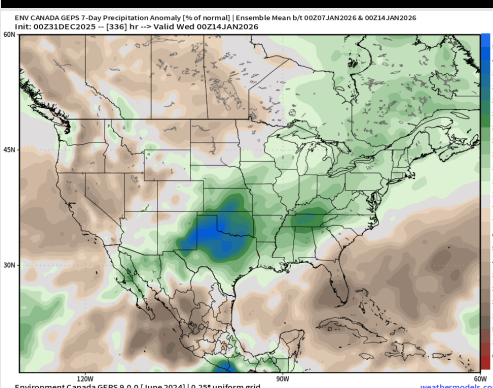
## 15-30 Day Temperature Departure



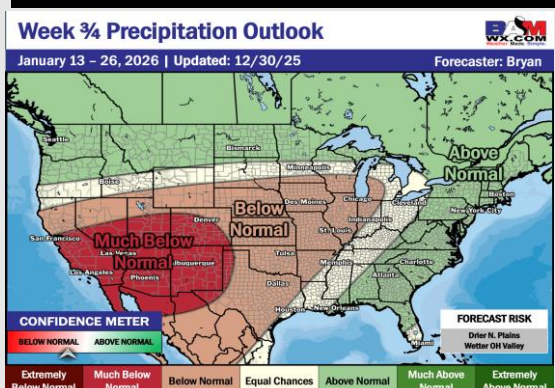
## Next 7 Day Total Precipitation



## 8-14 Day % of Average Precip.



## 15-30 Day % of Average Precip.



- Above normal temps are favored over the next 7 days, with minimal / isolated rain chances over the next 7 days.
- Above normal temperatures and above normal rainfall favored in the Week 2 timeframe.
- Below normal temperatures and near normal rainfall expected for mid January.