

Houston Pilots Forecast Package



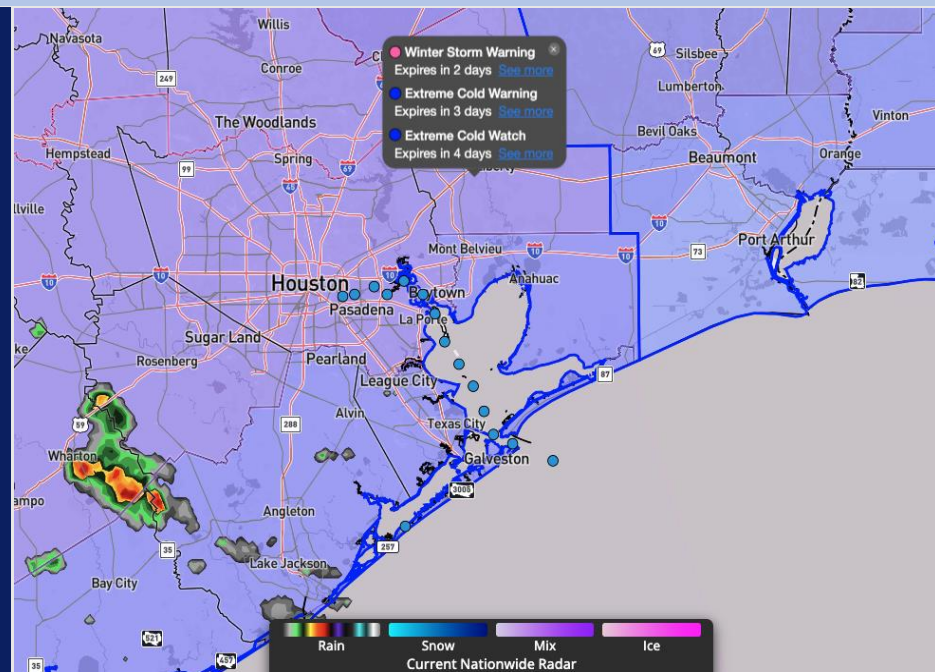
Updated: 12:00 AM CT

Saturday, January 24th, 2026

Forecaster: Noah Began

Weather Headlines

- Fog risks remain isolated for ALL Stations through 6 AM, which look to end fog risks for the foreseeable future.
- Persistent rain for today and SUN. Very low-end risk for freezing rain SUN AM.
- Gusty winds of 30 – 35 kts remain in play, especially for the Boarding Station, through MON.



Current Radar: 11:08 PM CT

As always, please do not hesitate to reach out to us with any forecast questions at (317)-560-8122. Press 1 for forecast questions.



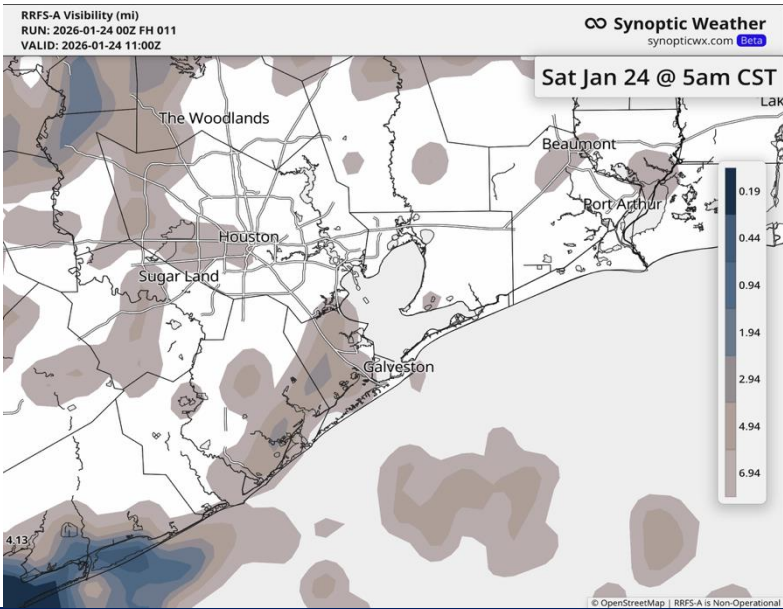
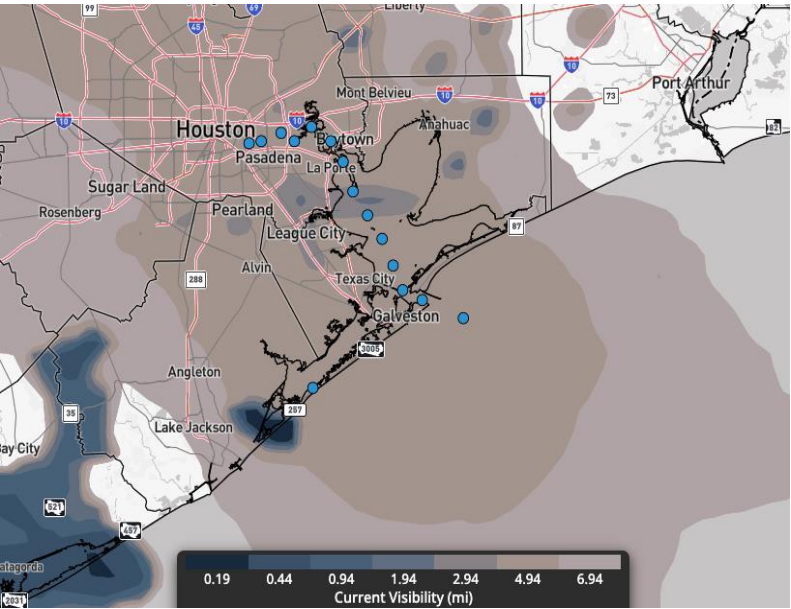
You can also access real-time forecast updates and 24/7 meteorological chat assistance on your [Clarity](#) app.

Houston Pilots Visibility Report

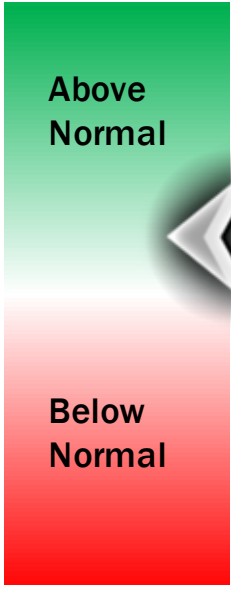


CURRENT VISIBILITY

5 AM SAT VISIBILITY



Confidence



TIMEFRAME DISCUSSED	THREAT
Now – 6 AM SAT	LOW

ALL Stations can continue to see isolated pockets of dense fog through 6 AM. Incoming thunderstorms will eliminate any remaining fog after 6 AM.

Stations between 25/26 and Morgan’s Point are likeliest to see fog. Any pockets would be capable of reducing visibilities to <1 mile.

Houston Pilots Extended Range Visibility Report



Tuesday 01/27/2026

Fog is not favored.

Forecast Confidence



Thursday 01/29/2026

Fog is not favored.

Forecast Confidence



Wednesday 01/28/2026

Fog is not favored.

Forecast Confidence



Chance for Fog

Tuesday AM	Unlikely
Tuesday PM	Unlikely
Wednesday AM	Unlikely
Wednesday PM	Unlikely
Thursday AM	Unlikely
Thursday PM	Unlikely

Houston Pilots Visibility Chart (miles)



Visibility	Sat 12 am	Sat 1 am	Sat 2 am	Sat 3 am	Sat 4 am	Sat 5 am	Sat 6 am	Sat 7 am	Sat 8 am	Sat 9 am	Sat 10 am	Sat 11 am	Sat 12 pm	Sat 1 pm	Sat 2 pm	Sat 3 pm	Sat 4 pm	Sat 5 pm	Sat 6 pm	Sat 7 pm	Sat 8 pm	Sat 9 pm	Sat 10 pm	Sat 11 pm
Houston Pilots N - 610 Bridge	5.9	5.9	6.9	6.9	7.9	6.9	7.9	9	5.9	2.9	2.5	2.9	2.9	3.9	3.9	2.9	3.9	3.9	3.9	3.9	4.9	4.9	4.9	3.9
Houston Pilots M - Kinder 1	5.9	5.9	6.9	6.9	7.9	6.9	9	9	5.9	2.9	2.5	2.9	2.9	3.9	3.9	2.9	3.9	3.9	3.9	3.9	4.9	4.9	4.9	3.9
Houston Pilots L - Greens Bayou	5.9	5.9	6.9	6.9	7.9	6.9	9	9	5.9	2.9	2.5	2.9	2.9	3.9	3.9	2.9	3.9	3.9	3.9	3.9	4.9	3.9	4.9	3.9
Houston Pilots K - Shell Crude	6.9	5.9	6.9	6.9	7.9	6.9	9	9	5.9	2.9	2.5	2.9	2.9	3.9	3.9	2.9	3.9	3.9	3.9	3.9	4.9	4.9	4.9	3.9
Houston Pilots J - Lynchburg Ferries	5.9	5.9	6.9	6.9	9	6.9	9	9	5.9	2.9	2	2.9	2.9	2.9	3.9	2.9	3.9	3.9	3.9	3.9	4.9	3.9	3.9	3.9
Houston Pilots I - Exxon 3	6.9	5.9	6.9	6.9	9	6.9	9	9	5.9	2.9	2.5	2.9	2.9	2.9	3.9	2.9	3.9	3.9	3.9	3.9	4.9	4.9	4.9	3.9
Houston Pilots H - Morgans Point	6.9	6.9	6.9	6.9	9	7.9	9	6.9	5.9	3.9	2.5	2.9	2.9	3.9	3.9	2.9	3.9	3.9	3.9	3.9	4.9	3.9	3.9	3.9
Houston Pilots G - 75/76	5.9	5.9	6.9	6.9	7.9	6.9	6.9	6.9	4.9	2.9	2.5	2.9	2.9	2.9	3.9	2.9	3.9	3.9	3.9	3.9	3.9	3.9	9	9
Houston Pilots F - 63/64	5.9	5.9	6.9	6.9	6.9	6.9	6.9	6.9	4.9	2.9	2.5	2.9	2.9	2.9	3.9	2.9	3.9	3.9	3.9	3.9	3.9	3.9	9	9
Houston Pilots E - 51/52	4.9	4.9	5.9	6.9	6.9	4.9	6.9	6.9	3.9	2.9	2.5	2.5	2.9	2.9	2.9	2.9	3.9	3.9	3.9	3.9	3.9	3.9	9	9
Houston Pilots D - 37/38	4.9	4.9	4.9	6.9	6.9	5.9	5.9	5.9	3.9	2.9	2.5	2.5	2.9	2	2.5	2.5	2.9	2.9	3.9	3.9	3.9	3.9	9	9
Houston Pilots C - 25/26	4.9	4.9	4.9	5.9	5.9	4.9	5.9	4.9	3.9	2.9	2.5	2	2.5	2	2.5	2.5	2.9	2.9	2.9	2.9	3.9	2.9	9	9
Houston Pilots B - 11/12	4.9	4.9	4.9	4.9	4.9	5.9	5.9	4.9	3.9	2.9	2.9	1.6	2	2	2.5	2.5	2.9	2.9	2.9	2.9	3.9	2.9	9	9
Houston Pilots A - 1 & 2 Bravo	3.9	4.9	4.9	5.9	5.9	5.9	5.9	5.9	4.9	2.5	2.9	2	0.5	0.5	0.8	1.1	1.1	2	1.6	1.6	2.9	2	8	8

NOTE: This is automated data that may/may not agree with the official BAM thinking that's found on the daily slides or special visibility report slides. This data should be used as a guide only

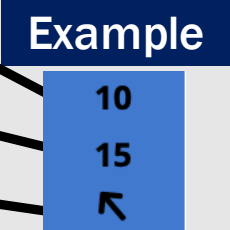
Houston Pilots Wind Chart



Forecast Confidence



Sustained Wind 10 Knots
Gusts 15 Knots
Wind from the SE



Wind	Sat 12 am	Sat 1 am	Sat 2 am	Sat 3 am	Sat 4 am	Sat 5 am	Sat 6 am	Sat 7 am	Sat 8 am	Sat 9 am	Sat 10 am	Sat 11 am	Sat 12 pm	Sat 1 pm	Sat 2 pm	Sat 3 pm	Sat 4 pm	Sat 5 pm	Sat 6 pm	Sat 7 pm	Sat 8 pm	Sat 9 pm	Sat 10 pm	Sat 11 pm
Houston Pilots N - 610 Bridge	10 21 ←	10 21 ←	10 21 ←	12 22 ←	12 22 ←	12 22 ←	12 22 ←	12 22 ←	12 21 ←	10 20 ←	10 20 ←	10 21 ←	12 22 ←	10 21 ←	12 22 ←	12 22 ←	12 22 ←	13 22 ←	12 22 ←	10 21 ←	10 21 ←	12 22 ←	12 22 ←	12 22 ←
Houston Pilots M - Kinder 1	10 21 ←	10 21 ←	10 21 ←	12 22 ←	12 22 ←	12 22 ←	12 22 ←	12 22 ←	12 21 ←	10 20 ←	10 20 ←	10 21 ←	12 21 ←	10 21 ←	12 22 ←	12 22 ←	12 22 ←	12 22 ←	12 22 ←	10 21 ←	10 21 ←	12 22 ←	12 22 ←	12 22 ←
Houston Pilots L - Greens Bayou	10 21 ←	10 20 ←	10 21 ←	10 22 ←	12 22 ←	12 22 ←	12 22 ←	12 22 ←	12 21 ←	10 20 ←	10 20 ←	10 21 ←	12 21 ←	10 20 ←	12 21 ←	12 21 ←	12 22 ←	13 22 ←	12 22 ←	10 21 ←	10 21 ←	10 22 ←	10 22 ←	10 21 ←
Houston Pilots K - Shell Crude	10 21 ←	10 21 ←	10 22 ←	12 22 ←	12 22 ←	12 23 ←	12 23 ←	12 22 ←	12 22 ←	10 21 ←	10 20 ←	10 20 ←	12 21 ←	10 20 ←	12 21 ←	12 21 ←	12 22 ←	12 22 ←	12 22 ←	10 21 ←	10 21 ←	10 22 ←	10 22 ←	10 21 ←
Houston Pilots J - Lynchburg Ferries	10 20 ←	10 20 ←	10 21 ←	10 21 ←	10 22 ←	12 22 ←	12 22 ←	10 22 ←	10 21 ←	10 20 ←	10 20 ←	10 20 ←	12 21 ←	10 20 ←	12 21 ←	13 21 ←	13 22 ←	13 22 ←	13 22 ←	12 21 ←	10 21 ←	10 21 ←	10 22 ←	10 21 ←
Houston Pilots I - Exxon 3	15 22 ←	15 22 ←	16 23 ←	16 24 ←	17 24 ←	17 24 ←	17 24 ←	16 23 ←	15 22 ←	15 21 ←	13 20 ←	13 21 ←	13 21 ←	13 20 ←	13 21 ←	14 22 ←	14 22 ←	15 22 ←	15 22 ←	15 21 ←	15 21 ←	15 22 ←	15 22 ←	15 22 ←
Houston Pilots H - Morgans Point	15 22 ←	15 21 ←	15 23 ←	16 23 ←	16 24 ←	17 24 ←	17 24 ←	16 23 ←	15 23 ←	15 22 ←	13 21 ←	13 21 ←	13 21 ←	13 21 ←	13 22 ←	14 22 ←	14 22 ←	15 22 ←	15 22 ←	15 21 ←	15 21 ←	15 22 ←	15 22 ←	15 22 ←
Houston Pilots G - 75/76	17 25 ←	17 25 ←	18 26 ←	20 28 ←	20 28 ←	20 29 ←	20 29 ←	20 29 ←	20 26 ←	17 26 ←	16 23 ←	15 23 ←	15 23 ←	14 22 ←	15 23 ←	15 24 ←	16 24 ←	17 24 ←	16 24 ←	16 23 ←	16 23 ←	16 24 ←	17 24 ←	17 25 ←
Houston Pilots F - 63/64	17 25 ←	17 25 ←	18 26 ←	20 28 ←	20 29 ←	21 30 ←	21 30 ←	21 30 ←	20 28 ←	18 26 ←	17 24 ←	15 23 ←	15 23 ←	14 22 ←	15 23 ←	15 23 ←	15 24 ←	16 24 ←	16 23 ←	15 22 ←	16 23 ←	17 24 ←	17 24 ←	17 25 ←
Houston Pilots E - 51/52	17 25 ←	17 25 ←	18 26 ←	20 28 ←	20 29 ←	21 30 ←	21 30 ←	21 30 ←	20 29 ←	20 26 ←	17 25 ←	16 24 ←	15 23 ←	14 22 ←	15 23 ←	15 23 ←	15 24 ←	16 24 ←	16 24 ←	17 23 ←	17 24 ←	17 24 ←	17 24 ←	17 24 ←
Houston Pilots D - 37/38	17 25 ←	17 25 ←	18 26 ←	20 28 ←	20 29 ←	21 30 ←	21 30 ←	21 30 ←	20 29 ←	20 26 ←	17 25 ←	16 24 ←	15 23 ←	14 22 ←	15 23 ←	15 23 ←	15 23 ←	16 23 ←	16 23 ←	16 23 ←	17 24 ←	17 24 ←	17 24 ←	17 24 ←
Houston Pilots C - 25/26	17 25 ←	17 25 ←	18 26 ←	20 28 ←	20 29 ←	21 30 ←	21 30 ←	20 29 ←	20 28 ←	18 26 ←	17 25 ←	16 24 ←	15 23 ←	15 22 ←	15 22 ←	15 22 ←	15 22 ←	16 23 ←	16 23 ←	15 22 ←	16 23 ←	16 24 ←	16 23 ←	16 23 ←
Houston Pilots B - 11/12	15 24 ←	15 24 ←	17 25 ←	17 26 ←	17 26 ←	18 26 ←	18 26 ←	18 26 ←	18 26 ←	17 26 ←	16 24 ←	15 23 ←	15 22 ←	14 21 ←	14 21 ←	15 21 ←	15 22 ←	15 22 ←	15 22 ←	15 21 ←	14 20 ←	15 21 ←	15 22 ←	15 21 ←
Houston Pilots A - 1 & 2 Bravo	18 26 ←	18 26 ←	20 26 ←	20 29 ←	20 29 ←	21 30 ←	21 30 ←	20 29 ←	20 28 ←	20 26 ←	17 26 ←	17 25 ←	15 23 ←	15 21 ←	15 22 ←	15 22 ←	15 22 ←	15 22 ←	15 22 ←	15 22 ←	16 23 ←	17 24 ←	17 24 ←	17 24 ←

NOTE: This is automated data that may/may not agree with the official BAM thinking that's found on the daily slides.
This data should be used as a guide only.

Houston Pilots: SAT. 01/24/2026

Forecast Discussion

Precip: A few light showers until thunderstorms work over the area from 6 AM - 12 PM. A few isolated thunderstorms through the day after that.

Wind: Winds out of the E though 10 AM, turning to out of the N thereafter. **N of Morgan's Point:** Winds of 9 - 14 kts through the day. **Gusts of 18 - 23 kts through 6 AM, lowering to 20 kts thereafter.** **S of Morgan's Point:** Winds of 15 - 20 kts through the day. **Gusts of 23 - 28 kts through 8 AM, lowering to 20 - 25 kts thereafter.** **Boarding Station:** Winds of 19 - 24 kts through the day. **Gusts of 28 - 33 kts through 9 AM, lowering to 21 - 26 kts thereafter.**

High Temps: **N of Morgan's Point:** Upper 60s F. **S of Morgan's Point:** Upper 50s F.

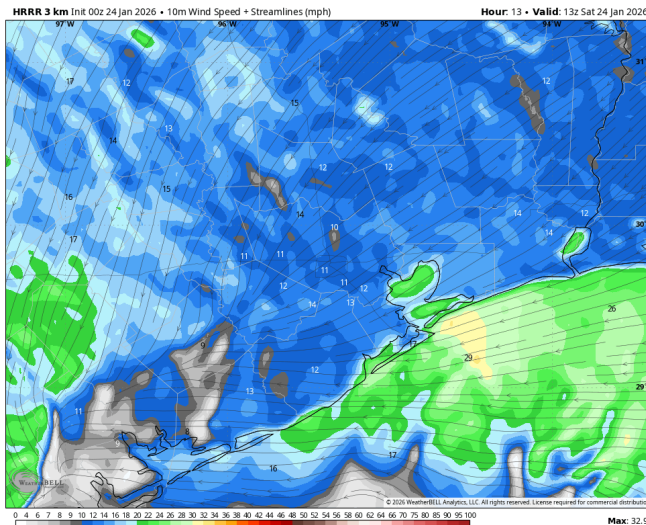
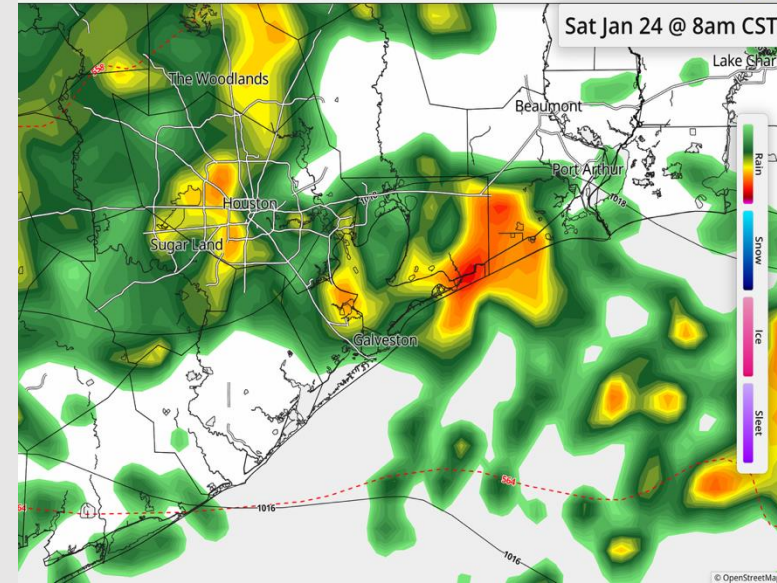
Visibility: Isolated risks in the Bay through 6 AM. See visibility slide for details.

Precip Image: 8 AM CT

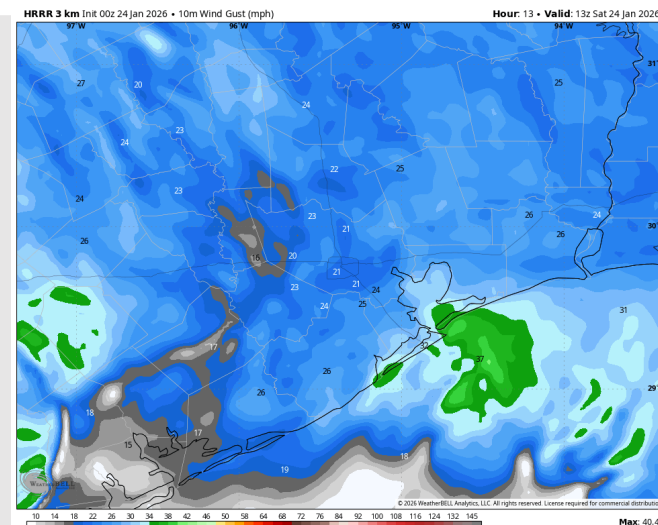
HRRR 1km Ref & Type | MSLP (mb) | 1000-500mb Thickness (dam)
RUN: 2026-01-24 00Z FH 014
VALID: 2026-01-24 14:00Z

Synoptic Weather
synopticwx.com [Data](#)

Sat Jan 24 @ 8am CST



Wind Speed:
7 AM CT



PEAK GUSTS
7 AM Today

Houston Pilots: SUN. 01/25/2026

Forecast Discussion

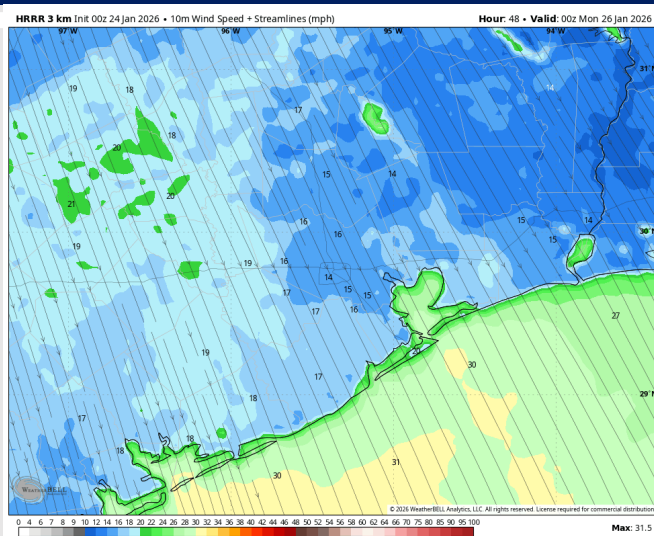
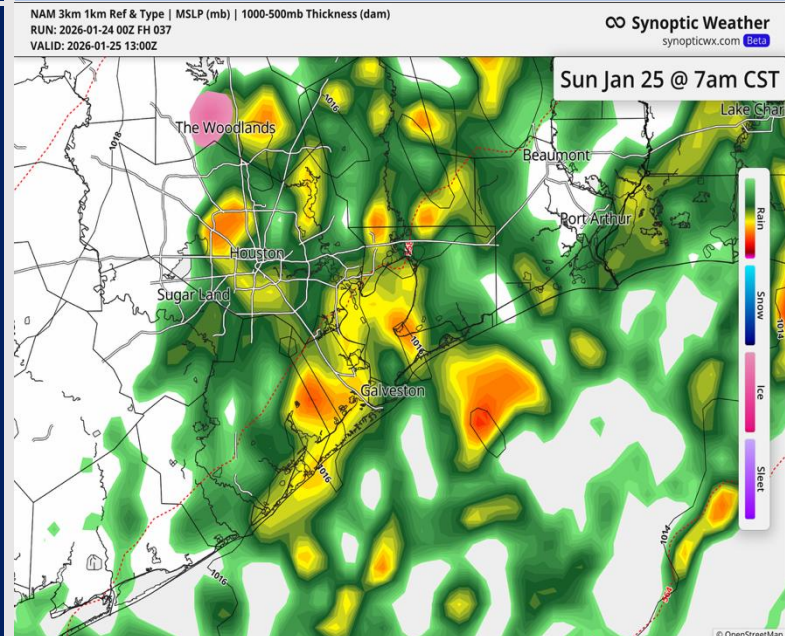
Precip: Light thundershowers can continue through 9 AM, with a few additional isolated showers through 12 PM. Freezing rain is NOT currently anticipated, however it cannot be ruled out entirely N of 63 / 64 from 6 AM – 9 AM.

Wind: Winds out of the NW through the day. **N of Morgan's Point:** Winds of 10 – 15 kts through the day. **Gusts of 20 – 25 kts through the day.** **S of Morgan's Point:** Winds of 15 – 20 kts through 6 PM, increasing to 18 – 23 kts thereafter. **Gusts of 22 – 27 kts.** **Boarding Station** Winds of 23 – 28 kts through the day. **A few gusts to 35 kts through the day, especially after 4 PM.**

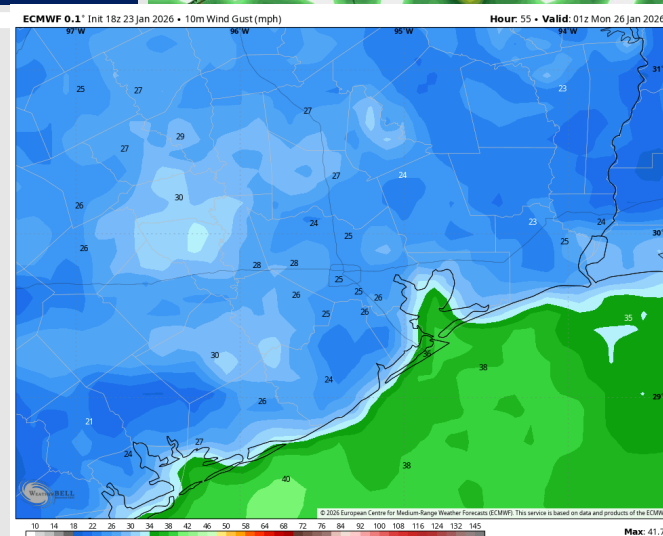
High Temps: **N of Morgan's Point:** Low 30s F. **S of Morgan's Point:** Mid 30s F.

Visibility: No visibility concerns for Sunday.

Precip Image: 7 AM CT



Wind Speed:
6 PM CT



Peak Gusts
7 PM SUN

Houston Pilots: MON. 01/26/2026

Forecast Discussion

Precip: Dry conditions favored for Monday.

Wind: Winds out of the N through the day. **N of Morgan's Point:** Winds of 5 – 10 kts through the day. **Gusts of 17 – 22 kts through 6 PM.** **S of Morgan's Point:** Winds of 18 – 23 kts through 10 AM, lowering to 13 – 18 kts thereafter. **Gust of 28 – 33 kts through 8 AM, and 20 – 25 kts thereafter.** Winds at the **Boarding Station** of 22 – 27 kts through 8 AM. **Gusts of 30 – 35 kts through 8 AM.**

High Temps: **N of Morgan's Point:** Upper 30s F. **S of Morgan's Point:** Upper 30s F.

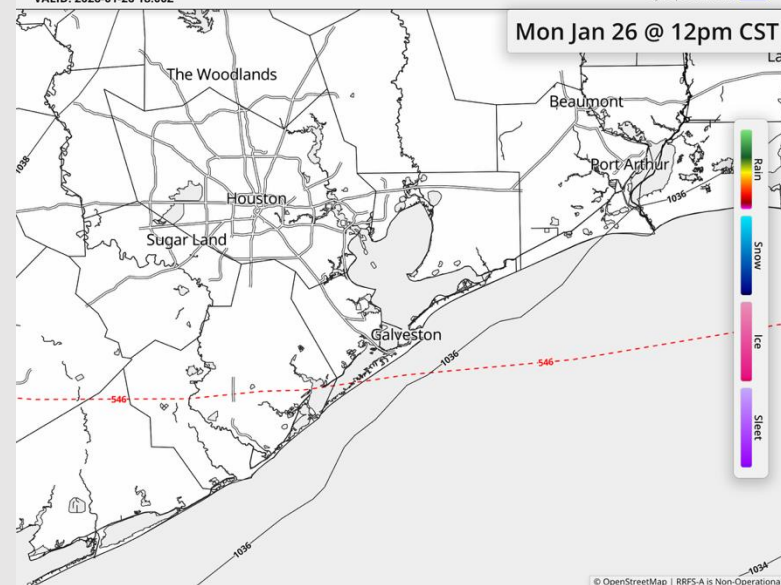
Visibility: No visibility concerns for MON.

Precip Image: 6 AM CT

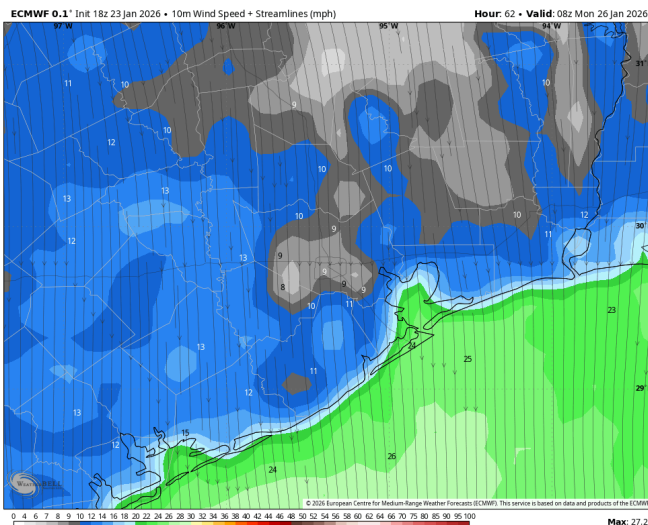
RRFS-A 1km Ref & Type | MSLP (mb) | 1000-500mb Thickness (dam)
RUN: 2026-01-24 00Z FH 066
VALID: 2026-01-26 18:00Z

Synoptic Weather
synopticwx.com Beta

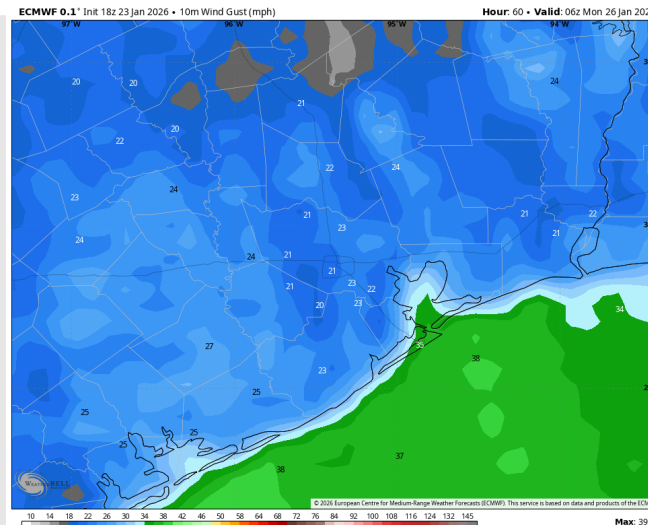
Mon Jan 26 @ 12pm CST



© OpenStreetMap | RRFS-A is Non-Operational



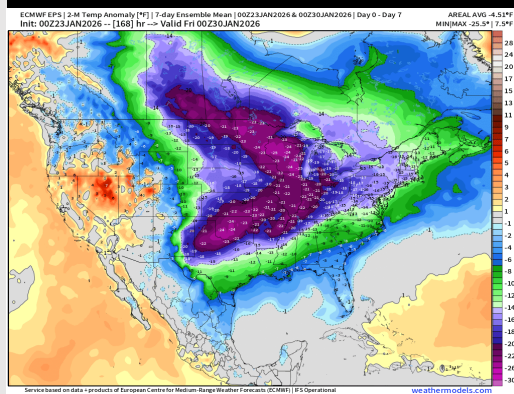
Wind Speed:
2 AM CT



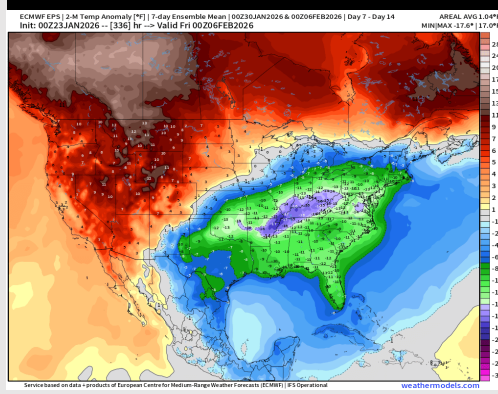
PEAK GUSTS
12 AM MON

Houston Pilots: 01/24/2026

Next 7 Day Temperature Departure



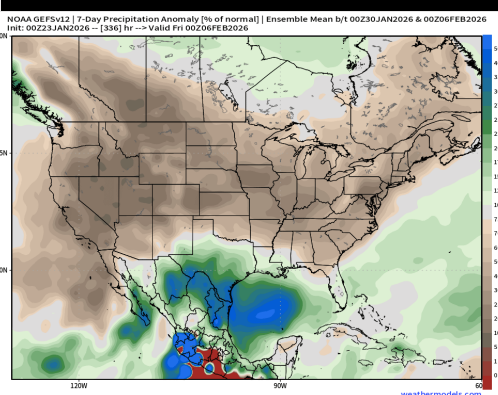
8-14 Day Temperature Departure



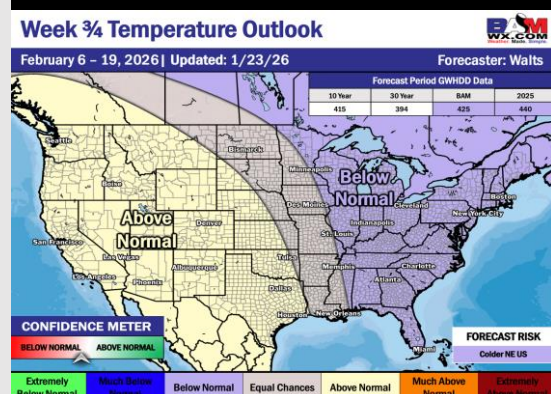
Next 7 Day Total Precipitation



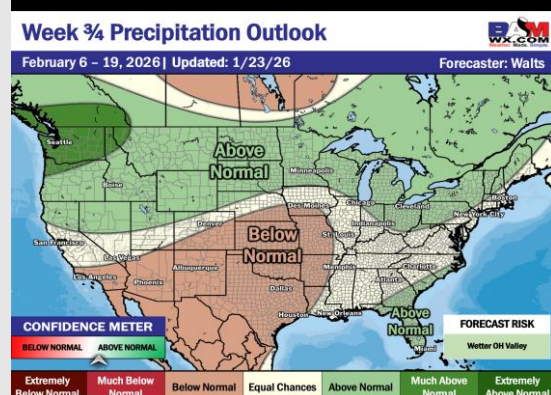
8-14 Day % of Average Precip.



15-30 Day Temperature Departure



15-30 Day % of Average Precip.



- Below normal temps are favored over the next 7 days, with widespread rain SAT + SUN and late next week. Freezing rain can mix in SAT night into SUN morning.
- Below normal temperatures and slightly-above normal rain changes in the Week 2 period.
- Slightly above normal temperatures and below normal rainfall expected for early February.