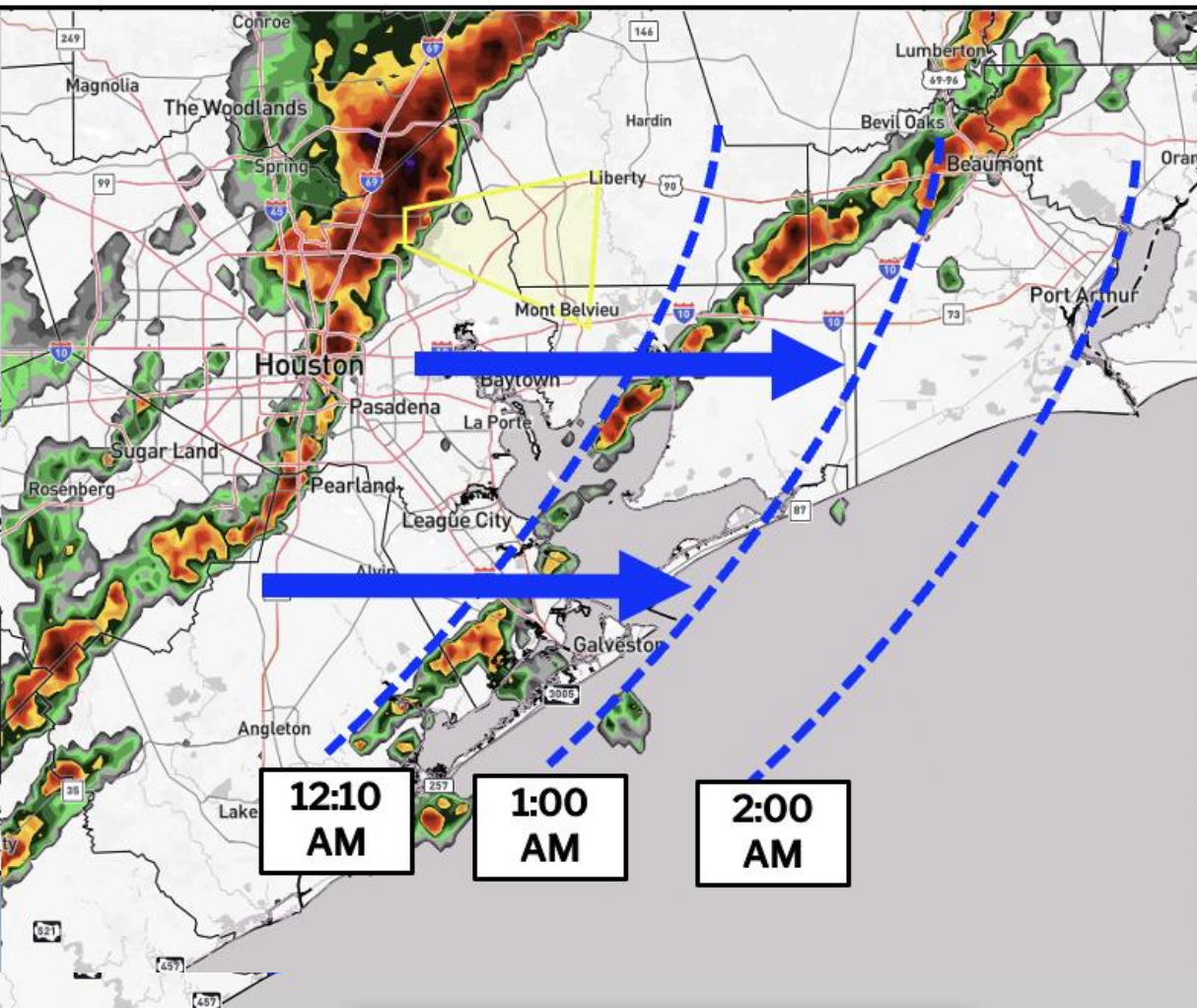


✓ BLUE LINES = Approximate arrival time of the PRIMARY line of thunderstorms.



Confidence in Timing:
3.5 / 5

- A broken line of storm cells is moving eastwards at ~30 mph.
- Storms will be capable of lightning, a few gusts to 55 mph, and dime-sized hail.

Houston Pilots Forecast Package



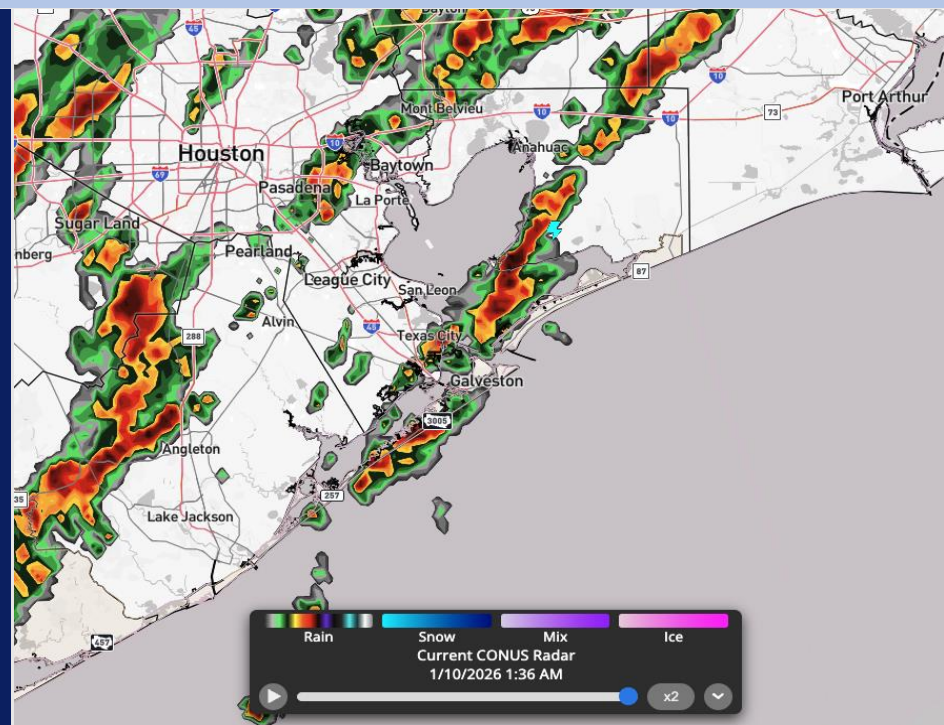
Updated: 1:00 AM CT

Saturday, January 10, 2026

Forecaster: Began

Weather Headlines

- Fog is favored to clear out from north to south from 1 AM to 3 AM Saturday!
- Thunderstorms are anticipated to remain in the area through 3:30 AM CST. See Nowcast slide for details.
- Wind gusts up to 35 kts will be possible Saturday and Sunday.



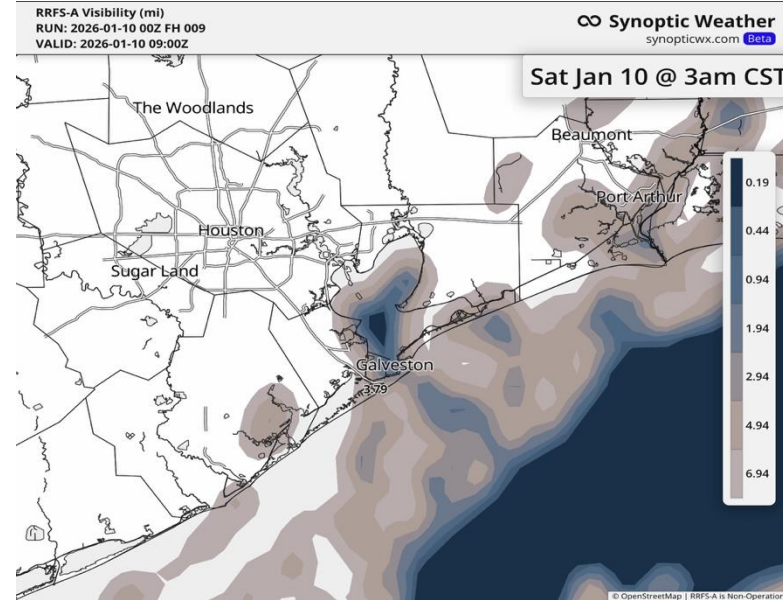
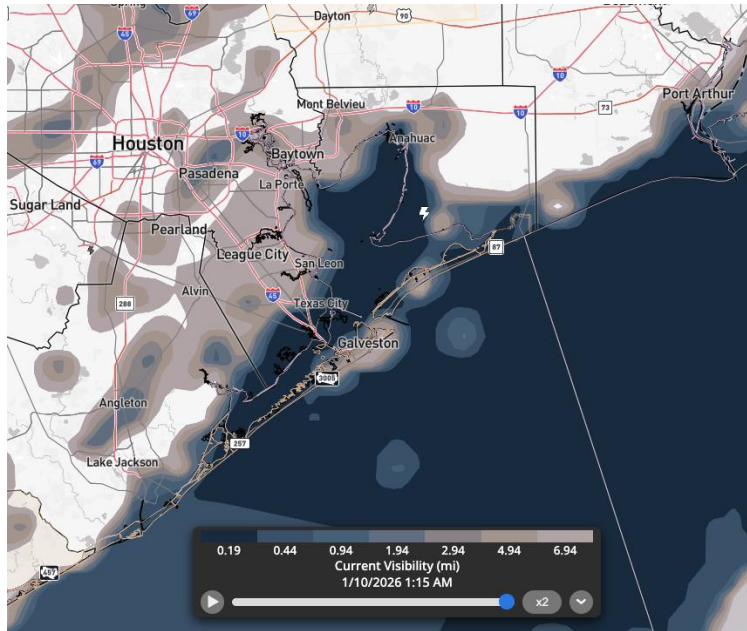
Current Radar: 12:40 AM CT

As always, please do not hesitate to reach out to us with any forecast questions at [\(317\)-560-8122](tel:3175608122). Press 1 for forecast questions.



You can also access real-time forecast updates and 24/7 meteorological chat assistance on your [Clarity](#) app.

Confidence



**Above
Normal**

**Below
Normal**

TIMEFRAME DISCUSSED

THREAT

CURRENT- 3 AM SAT

LOW

N. of Morgan's Point: Fog has concluded.

S. Of Morgan's Point: A couple isolated pockets of fog can remain through 3 AM, however storms working through the area will quickly dissipate any fog. Localized visibilities <0.5 miles will be possible for any stations south of Morgan's Point through then, but active rain / storms will keep coverage highly limited. **Stations south of 25/26** will be at greatest risk (including the Boarding Station).

Houston Pilots Extended Range Visibility Report



Tuesday 01/13/2026

Fog is not favored.

Forecast Confidence



Thursday 01/15/2026

Fog is not favored.

Forecast Confidence



Wednesday 01/14/2026

Fog is not favored.

Forecast Confidence



Chance for Fog

Tuesday AM	Unlikely
Tuesday PM	Unlikely
Wednesday AM	Unlikely
Wednesday PM	Unlikely
Thursday AM	Unlikely
Thursday PM	Unlikely

Houston Pilots Visibility Chart (miles)



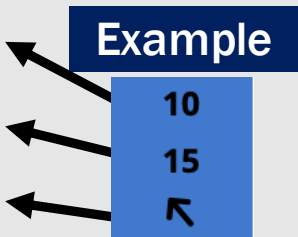
Visibility	Sat 2 am	Sat 3 am	Sat 4 am	Sat 5 am	Sat 6 am	Sat 7 am	Sat 8 am	Sat 9 am	Sat 10 am	Sat 11 am	Sat 12 pm	Sat 1 pm	Sat 2 pm	Sat 3 pm	Sat 4 pm	Sat 5 pm	Sat 6 pm	Sat 7 pm	Sat 8 pm	Sat 9 pm	Sat 10 pm	Sat 11 pm	Sun 12 am	Sun 1 am
Houston Pilots N - 610 Bridge	3.9	3.9	3.9	3.9	4.9	5.9	6.9	7.9	9	10	10	10	10	10	10	10	10	10	10	10	10	10	10	10
Houston Pilots M - Kinder 1	3.9	3.9	3.9	3.9	4.9	5.9	6.9	7.9	9	10	10	10	10	10	10	10	10	10	10	10	10	10	10	10
Houston Pilots L - Greens Bayou	3.9	3.9	3.9	3.9	4.9	5.9	6.9	6.9	9	10	10	10	10	10	10	10	10	10	10	10	10	10	10	10
Houston Pilots K - Shell Crude	3.9	3.9	3.9	3.9	4.9	5.9	6.9	6.9	9	10	10	10	10	10	10	10	10	10	10	10	10	10	10	10
Houston Pilots J - Lynchburg Ferries	3.9	3.9	3.9	3.9	4.9	5.9	6.9	7.9	9	10	10	10	10	10	10	10	10	10	10	10	10	10	10	10
Houston Pilots I - Exxon 3	3.9	3.9	3.9	3.9	4.9	5.9	6.9	6.9	9	10	10	10	10	10	10	10	10	10	10	10	10	10	10	10
Houston Pilots H - Morgans Point	2.9	3.9	3.9	3.9	4.9	5.9	6.9	6.9	10	10	10	10	10	10	10	10	10	10	10	10	10	10	10	10
Houston Pilots G - 75/76	0.2	3.9	3.9	3.9	4.9	5.9	7.9	6.9	10	10	10	10	10	10	10	10	10	10	10	10	10	10	10	10
Houston Pilots F - 63/64	0.2	2.5	3.9	2.5	4.9	5.9	7.9	6.9	10	10	10	10	10	10	10	10	10	10	10	10	10	10	10	10
Houston Pilots E - 51/52	0.2	0.2	0.3	0.3	2.9	4.9	7.9	5.9	9	10	10	10	10	10	10	10	10	10	10	10	10	10	10	10
Houston Pilots D - 37/38	0.2	0.2	0.3	0.3	2.9	4.9	7.9	5.9	9	10	10	10	10	10	10	10	10	10	10	10	10	10	10	10
Houston Pilots C - 25/26	0.2	0.2	0.3	0.3	2.9	4.9	7.9	4.9	9	10	10	10	10	10	10	10	10	10	10	10	10	10	10	10
Houston Pilots B - 11/12	0.2	0.2	0.3	0.3	2.5	3.9	6.9	4.9	9	10	10	10	10	10	10	10	10	10	10	10	10	10	10	10
Houston Pilots A - 1 & 2 Bravo	0.2	0.2	0.3	0.3	2.5	3.9	5.9	4.9	9	10	10	10	10	10	10	10	10	10	10	10	10	10	10	10

NOTE: This is automated data that may/may not agree with the official BAM thinking that's found on the daily slides or special visibility report slides. This data should be used as a guide only

Houston Pilots Wind Chart



Sustained Wind 10 Knots
Gusts 15 Knots
Wind from the SE



Wind	Sat 2 am	Sat 3 am	Sat 4 am	Sat 5 am	Sat 6 am	Sat 7 am	Sat 8 am	Sat 9 am	Sat 10 am	Sat 11 am	Sat 12 pm	Sat 1 pm	Sat 2 pm	Sat 3 pm	Sat 4 pm	Sat 5 pm	Sat 6 pm	Sat 7 pm	Sat 8 pm	Sat 9 pm	Sat 10 pm	Sat 11 pm	Sun 12 am	Sun 1 am
Houston Pilots N - 610 Bridge	7 14 ↘	8 15 ↘	8 16 ↘	9 18 ↘	10 21 ↘	12 22 ↘	14 24 ↘	15 25 ↘	15 28 ↘	16 29 ↘	17 31 ↘	15 30 ↘	15 31 ↘	15 29 ↘	15 29 ↘	15 28 ↘	15 28 ↘	13 25 ↘	13 26 ↘	14 25 ↘	14 25 ↘	14 25 ↘	13 24 ↘	12 22 ↘
Houston Pilots M - Kinder 1	7 14 ↘	7 15 ↘	8 16 ↘	9 18 ↘	10 21 ↘	12 21 ↘	14 24 ↘	15 25 ↘	15 28 ↘	16 29 ↘	16 30 ↘	15 30 ↘	15 30 ↘	15 29 ↘	15 29 ↘	15 28 ↘	14 28 ↘	13 25 ↘	13 26 ↘	14 26 ↘	13 25 ↘	13 25 ↘	13 24 ↘	12 22 ↘
Houston Pilots L - Greens Bayou	6 13 ↘	7 14 ↘	8 16 ↘	9 18 ↘	10 20 ↘	10 21 ↘	13 23 ↘	14 25 ↘	15 28 ↘	15 29 ↘	16 29 ↘	15 30 ↘	15 30 ↘	15 29 ↘	15 28 ↘	15 28 ↘	15 26 ↘	13 25 ↘	13 25 ↘	14 25 ↘	13 24 ↘	13 25 ↘	13 24 ↘	12 22 ↘
Houston Pilots K - Shell Crude	6 13 ↘	7 14 ↘	8 16 ↘	9 18 ↘	10 20 ↘	10 21 ↘	13 24 ↘	14 25 ↘	15 28 ↘	15 29 ↘	16 29 ↘	15 30 ↘	16 30 ↘	16 29 ↘	15 28 ↘	15 28 ↘	15 26 ↘	13 25 ↘	13 26 ↘	14 25 ↘	13 25 ↘	13 25 ↘	13 24 ↘	12 22 ↘
Houston Pilots J - Lynchburg Ferries	6 12 ↘	7 13 ↘	8 15 ↘	8 17 ↘	9 20 ↘	10 21 ↘	13 23 ↘	13 25 ↘	15 28 ↘	15 29 ↘	17 29 ↘	17 29 ↘	17 30 ↘	17 29 ↘	16 28 ↘	15 26 ↘	15 26 ↘	13 25 ↘	13 26 ↘	13 25 ↘	13 25 ↘	13 24 ↘	13 23 ↘	10 22 ↘
Houston Pilots I - Exxon 3	9 14 ↘	10 15 ↘	12 16 ↘	13 18 ↘	14 21 ↘	15 21 ↘	16 23 ↘	17 25 ↘	17 26 ↘	17 28 ↘	17 29 ↘	17 29 ↘	18 30 ↘	18 29 ↘	18 29 ↘	20 28 ↘	20 28 ↘	17 25 ↘	18 26 ↘	18 26 ↘	18 26 ↘	18 26 ↘	17 26 ↘	17 24 ↘
Houston Pilots H - Morgans Point	8 13 ↘	10 14 ↘	10 16 ↘	12 18 ↘	13 20 ↘	14 21 ↘	15 23 ↘	17 24 ↘	17 26 ↘	17 28 ↘	17 29 ↘	17 29 ↘	18 30 ↘	18 29 ↘	18 29 ↘	20 28 ↘	20 28 ↘	17 25 ↘	17 26 ↘	18 26 ↘	18 26 ↘	18 26 ↘	17 25 ↘	17 24 ↘
Houston Pilots G - 75/76	10 14 ↘	10 15 ↘	13 17 ↘	13 20 ↘	15 22 ↘	16 23 ↘	18 26 ↘	20 29 ↘	20 30 ↘	20 30 ↘	20 30 ↘	20 31 ↘	21 32 ↘	22 31 ↘	22 32 ↘	22 31 ↘	21 31 ↘	20 29 ↘	20 29 ↘	22 31 ↘	21 30 ↘	22 31 ↘	21 30 ↘	20 29 ↘
Houston Pilots F - 63/64	9 14 ↘	10 15 ↘	12 17 ↘	13 20 ↘	15 22 ↘	16 23 ↘	18 26 ↘	20 29 ↘	21 30 ↘	21 31 ↘	20 31 ↘	20 31 ↘	20 32 ↘	21 31 ↘	21 31 ↘	21 30 ↘	21 30 ↘	20 28 ↘	21 29 ↘	22 31 ↘	22 31 ↘	22 31 ↘	21 30 ↘	20 29 ↘
Houston Pilots E - 51/52	9 13 ↘	10 15 ↘	12 16 ↘	13 18 ↘	14 21 ↘	15 22 ↘	17 25 ↘	20 30 ↘	21 31 ↘	22 30 ↘	21 30 ↘	20 31 ↘	22 32 ↘	22 31 ↘	22 31 ↘	22 31 ↘	22 31 ↘	21 30 ↘	22 31 ↘	22 32 ↘	22 32 ↘	22 32 ↘	22 31 ↘	22 30 ↘
Houston Pilots D - 37/38	8 13 ↘	10 14 ↘	10 16 ↘	13 18 ↘	14 21 ↘	15 22 ↘	17 25 ↘	20 29 ↘	22 31 ↘	21 30 ↘	21 30 ↘	21 31 ↘	22 32 ↘	22 32 ↘	22 32 ↘	22 32 ↘	22 32 ↘	22 31 ↘	23 32 ↘	23 33 ↘	23 33 ↘	23 32 ↘	22 32 ↘	22 31 ↘
Houston Pilots C - 25/26	8 13 ↘	9 14 ↘	10 16 ↘	13 18 ↘	13 20 ↘	15 21 ↘	17 24 ↘	20 29 ↘	21 30 ↘	21 30 ↘	21 30 ↘	21 31 ↘	22 32 ↘	22 32 ↘	22 32 ↘	22 32 ↘	22 32 ↘	22 31 ↘	22 32 ↘	23 32 ↘	22 33 ↘	23 32 ↘	22 32 ↘	22 31 ↘
Houston Pilots B - 11/12	8 13 ↘	8 13 ↘	9 15 ↘	10 17 ↘	13 18 ↘	13 20 ↘	15 23 ↘	17 26 ↘	20 29 ↘	20 29 ↘	20 29 ↘	20 30 ↘	21 31 ↘	21 31 ↘	21 31 ↘	22 31 ↘	21 31 ↘	20 30 ↘	21 30 ↘	22 31 ↘	21 31 ↘	21 31 ↘	21 29 ↘	20 29 ↘
Houston Pilots A - 1 & 2 Bravo	10 15 ↘	10 15 ↘	12 16 ↘	13 18 ↘	14 21 ↘	15 21 ↘	17 24 ↘	20 28 ↘	21 30 ↘	22 31 ↘	22 31 ↘	22 32 ↘	22 33 ↘	23 33 ↘	23 32 ↘	23 33 ↘	22 32 ↘	22 33 ↘	24 35 ↘	24 35 ↘	24 35 ↘	24 35 ↘	24 35 ↘	23 33 ↘

NOTE: This is automated data that may/may not agree with the official BAM thinking that's found on the daily slides.
This data should be used as a guide only.

Houston Pilots: SAT. 01/10/2026

Forecast Discussion

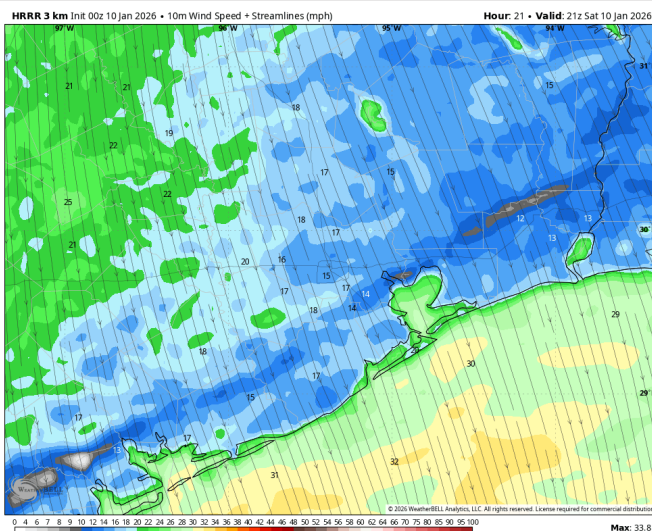
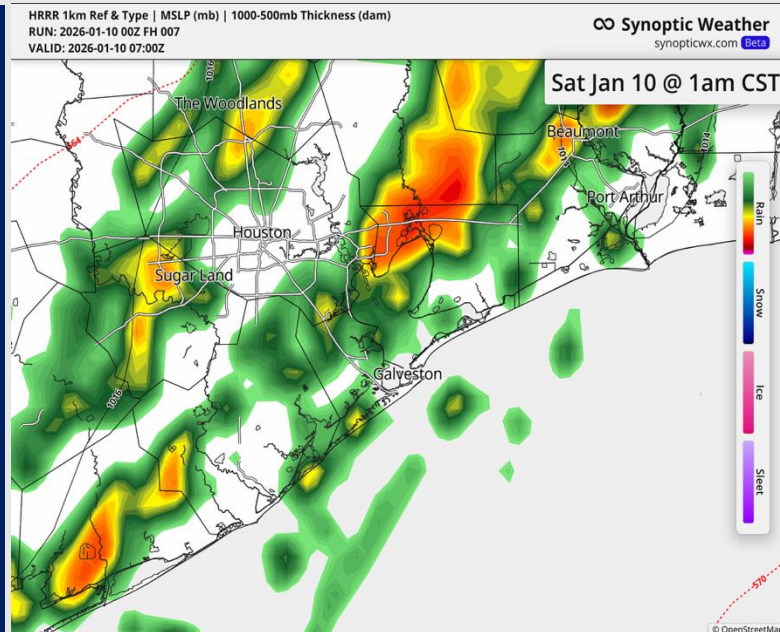
Precip: Thunderstorms through 3:30 AM. Storms will be capable of lightning, a few gusts to 35+ kts, and isolated pea to dime-sized hail, in addition to heavy downpours. Lighter rain in on-off snippets from 2 PM – 8 PM this evening. No storms are expected, and predominantly dry time is favored.

Wind: Winds out of the NNW through the day. **N of Morgan's Point:** Winds of 9 – 14 kts through the day. Gusts of 20 – 25 kts through 6 AM, increasing to 30 – 35 kts through 11 AM before calming back to 25 – 30 kts through 9 PM. **S of Morgan's Point:** Winds of 9 – 14 kts through 7 AM, increasing to 18 – 23 kts thereafter, . Winds of 22 – 27 kts after 7 AM at the **Boarding Station**, increasing to 25 – 30 kts after 11 PM. Gusts of 20 – 25 kts through 6 AM, increasing to 30 – 35 kts for the remainder of the day.

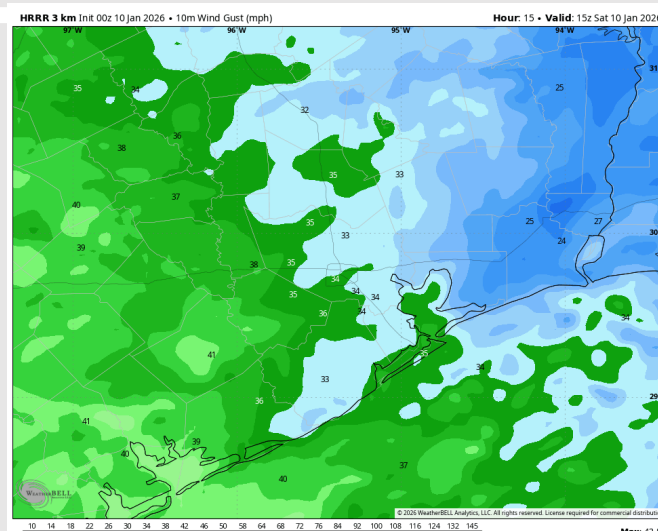
High Temps: **N of Morgan's Point:** Mid 60s F. **S of Morgan's Point:** Upper 60s F.

Visibility: A few patches of fog can linger in between storm cells as they work through by 3 AM, however storms will work to quickly break up any pockets.

Precip Image: 1 AM CT



Wind Speed:
3 PM CT



PEAK GUSTS
Today

Houston Pilots: SUN. 01/11/2026

Forecast Discussion

Precip: Dry conditions favored for Sunday.

Wind: Winds generally out of the N through the day. **N of Morgan's Point:** Winds of 8 – 13 kts from 12 AM – 3 AM and all day after 9 AM, with a calm period between 3 AM – 9 AM. **Gust of 18 – 23 kts from 12 AM - 1 AM before calming, then increasing again to 20 – 25 kts from 9 AM – 6 PM.** **S of Morgan's Point:** Winds of 18 – 23 kts through the day. Winds at the **Boarding Station** of 25 – 30 kts from 12 AM to 3 AM. **Gusts of 30 – 35 kts from 12 AM – 2 AM, calming to 20 – 25 kts through 6 PM.**

High Temps: **N of Morgan's Point:** Low 60s F. **S of Morgan's Point:** Upper 50s F.

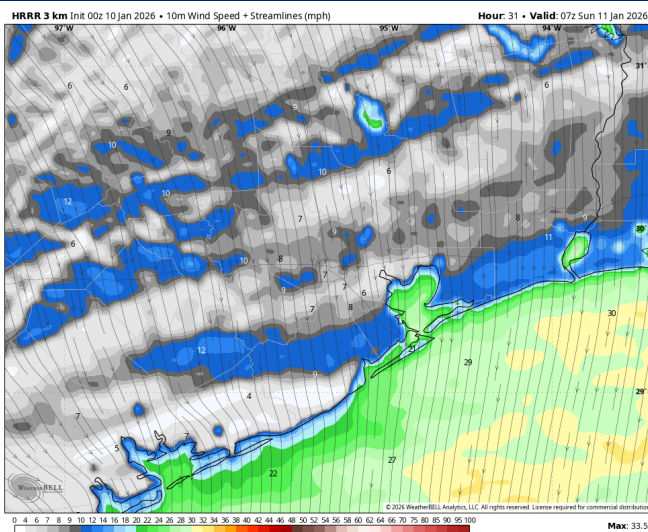
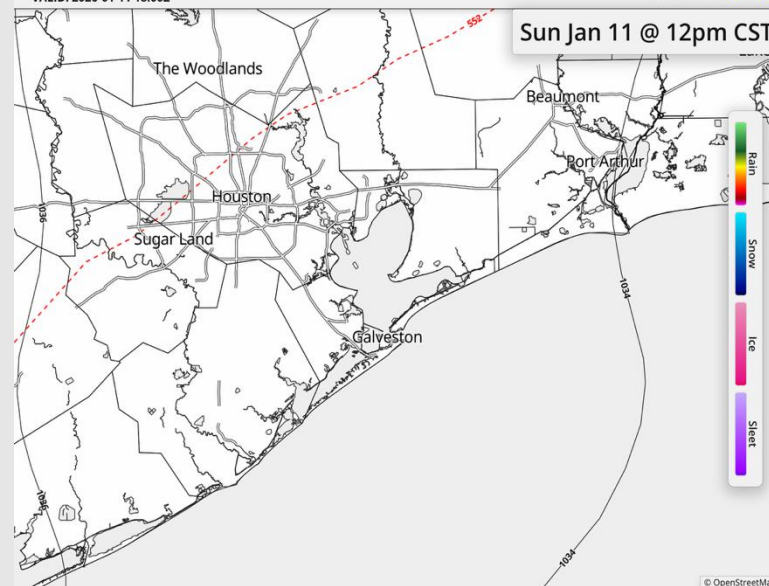
Visibility: No visibility concerns for Sunday.

Precip Image: 12 PM CT

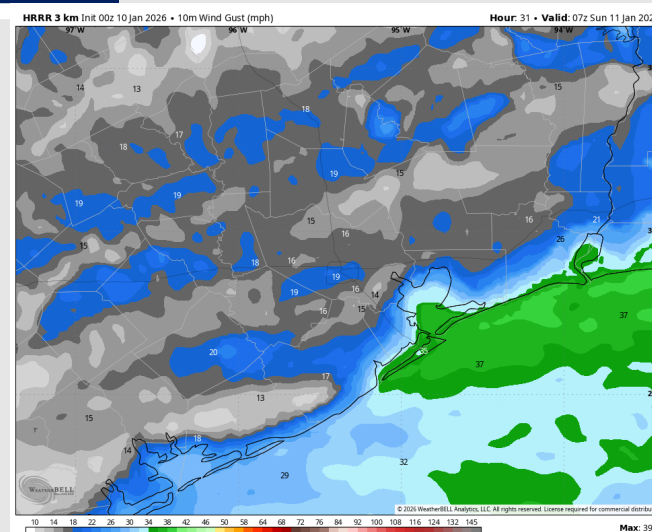
HRRR 1km Ref & Type | MSLP (mb) | 1000-500mb Thickness (dam)
RUN: 2026-01-10 00Z FH 042
VALID: 2026-01-11 18:00Z

∞ Synoptic Weather
synopticwx.com [Beta](#)

Sun Jan 11 @ 12pm CST



Wind Speed:
1 AM CT



**PEAK
GUSTS Sun**

Houston Pilots: MON. 01/12/2026

Forecast Discussion

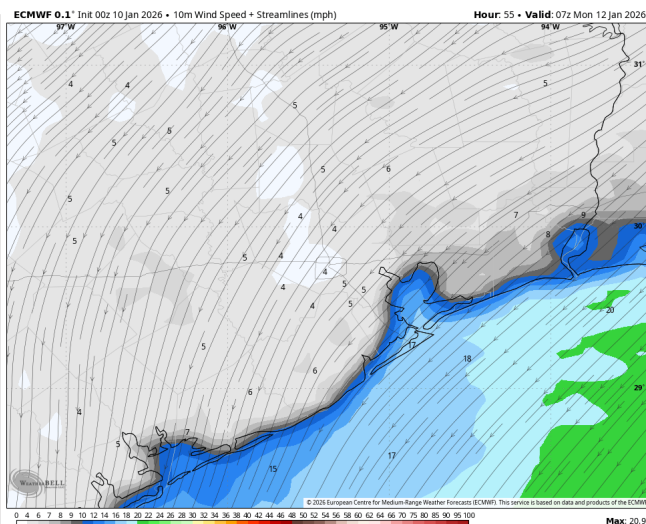
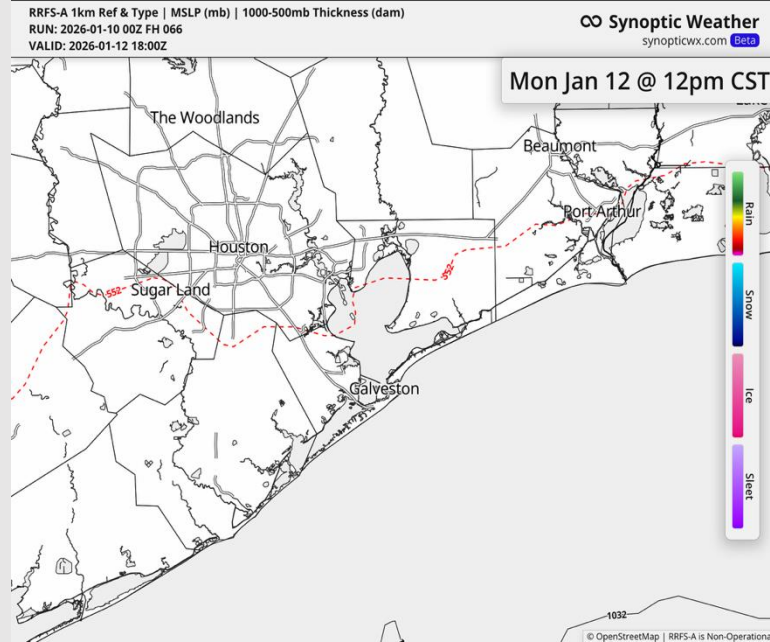
Precip: Dry conditions favored for Monday.

Wind: Winds out of the NE through the day. **N of Morgan's Point:** Winds at 3 – 8 kts. **S of Morgan's Point:** Winds of 8 - 13 kts (10 – 15 kts at the **Boarding Station**) through 1 PM, calming to 5 – 10 kts thereafter. **Gusts of 18 – 23 kts through 12 PM for south of Morgan's Point.**

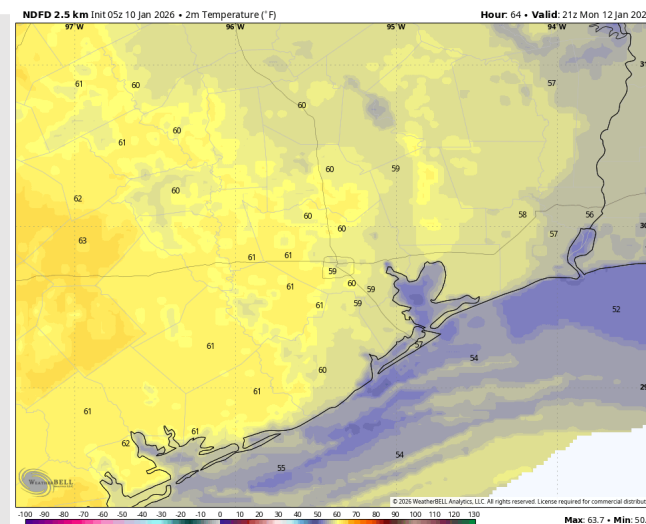
High Temps: **N of Morgan's Point:** Low 60s F. **S of Morgan's Point:** Mid 50s F.

Visibility: No visibility concerns for Monday.

Precip Image: 12 PM CT



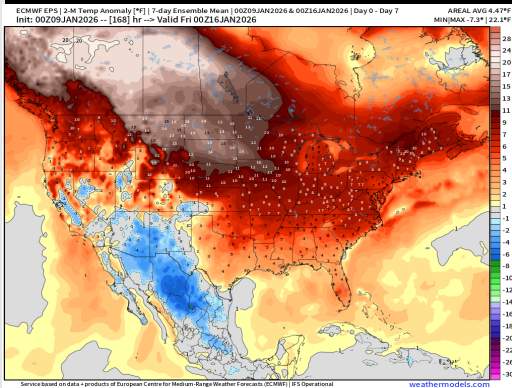
Wind Speed:
1 AM CT



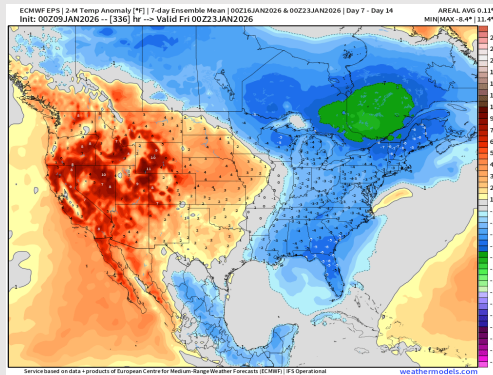
High Temps
MON

Houston Pilots: 01/10/2026

Next 7 Day Temperature Departure



8-14 Day Temperature Departure

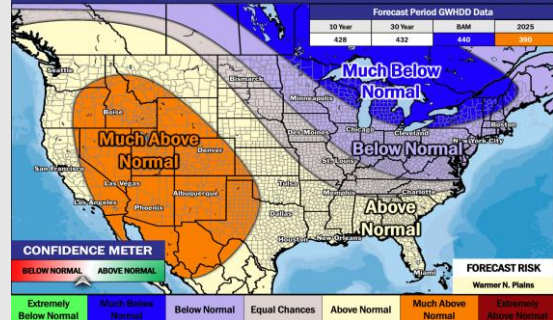


15-30 Day Temperature Departure

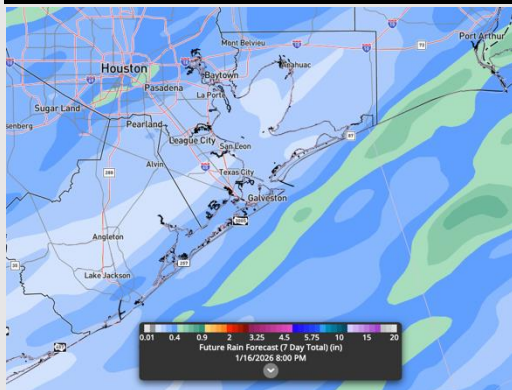
Week ¾ Temperature Outlook

January 23 - February 5, 2026 | Updated: 1/8/26

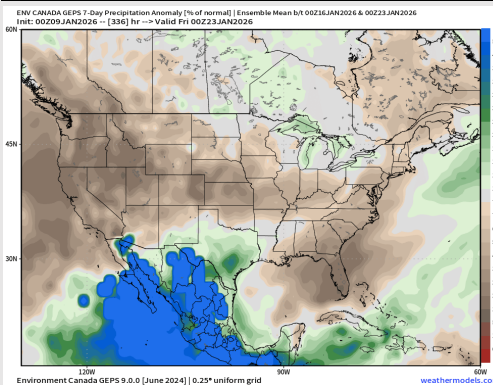
Forecaster: Walts



Next 7 Day Total Precipitation



8-14 Day % of Average Precip.

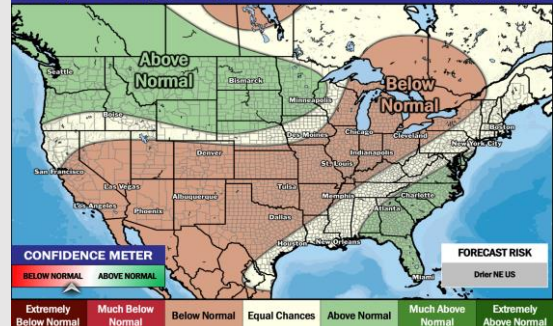


15-30 Day % of Average Precip.

Week ¾ Precipitation Outlook

January 23 - February 5, 2026 | Updated: 1/8/26

Forecaster: Walts



- Above normal temps are favored over the next 7 days, with isolated rain chances throughout the next week.
- Near normal temperatures and above normal rainfall favored in the Week 2 timeframe.
- Above normal temperatures and near normal rainfall expected for mid January.