

Houston Pilots Forecast Package



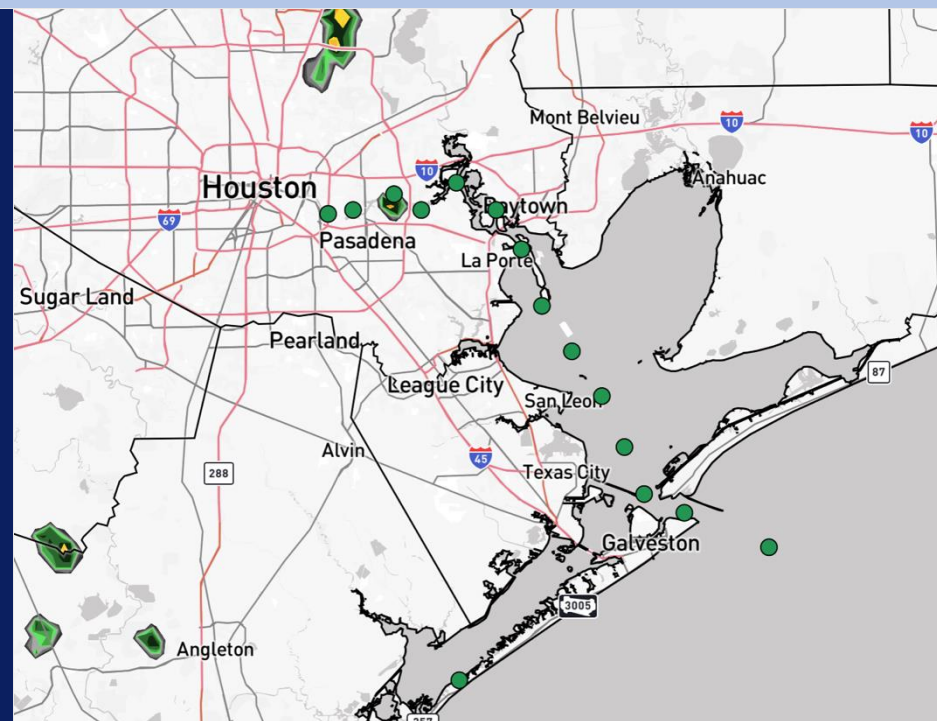
Updated: 2:30 AM CT

Friday, January 9, 2026

Forecaster: Hope Kleitsch

Weather Headlines

- Patchy fog with some dense pockets may linger throughout the day, with greatest coverage likely this morning and then this evening.
- Thunderstorms, a few strong to severe, will be possible FRI PM and into SAT AM.
- Wind gusts of 20+ kts are favored for the next 72 hours.



Current Radar: 2:30 AM CT

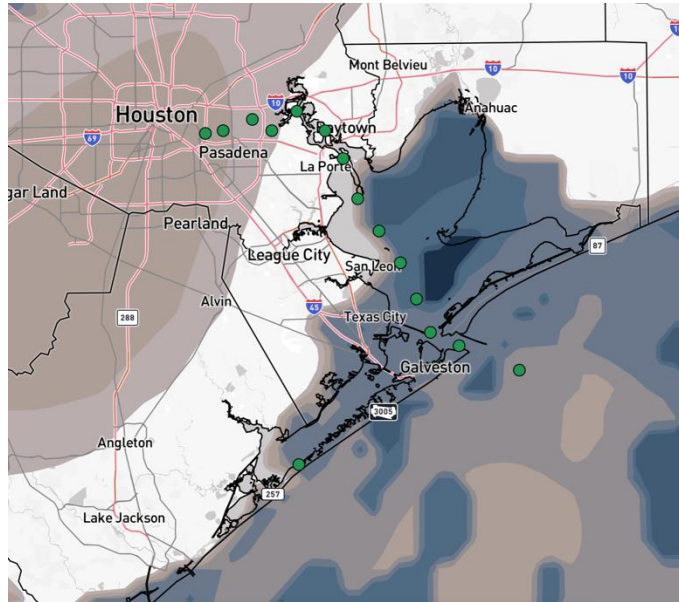
As always, please do not hesitate to reach out to us with any forecast questions at [\(317\)-560-8122](tel:317-560-8122). Press 1 for forecast questions.



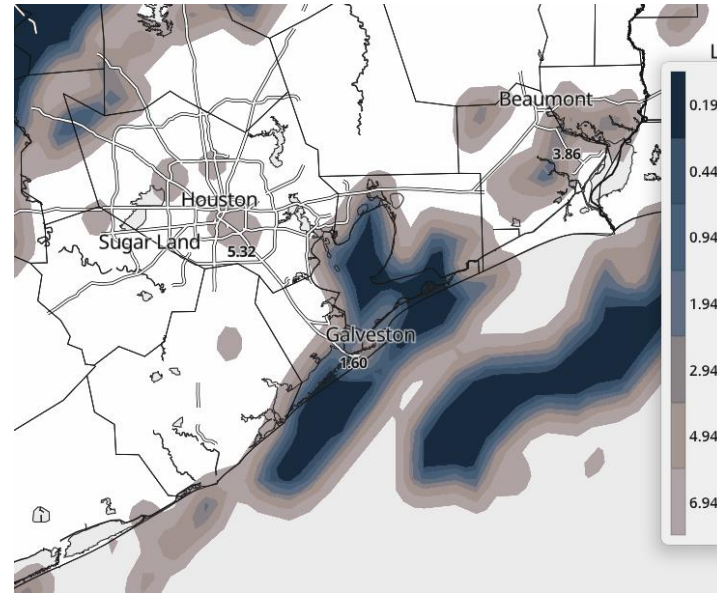
You can also access real-time forecast updates and 24/7 meteorological chat assistance on your [Clarity](#) app.

Houston Pilots Visibility Report

CURRENT VISIBILITY (2:15 AM CT)



7 AM CT FRI VISIBILITY



Confidence

Above
Normal

Below
Normal

TIMEFRAME DISCUSSED

THREAT

CURRENT- 11 AM
FRI

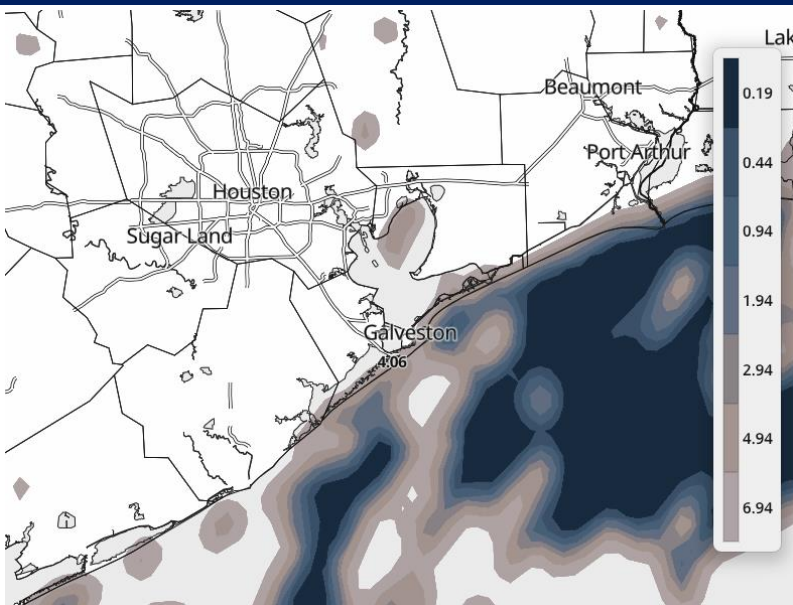
Medium

N. of Morgan's Point: Conditions are more likely to be misty than foggy through 11 AM FRI. Visibilities likely only drop down to 3 miles at times.

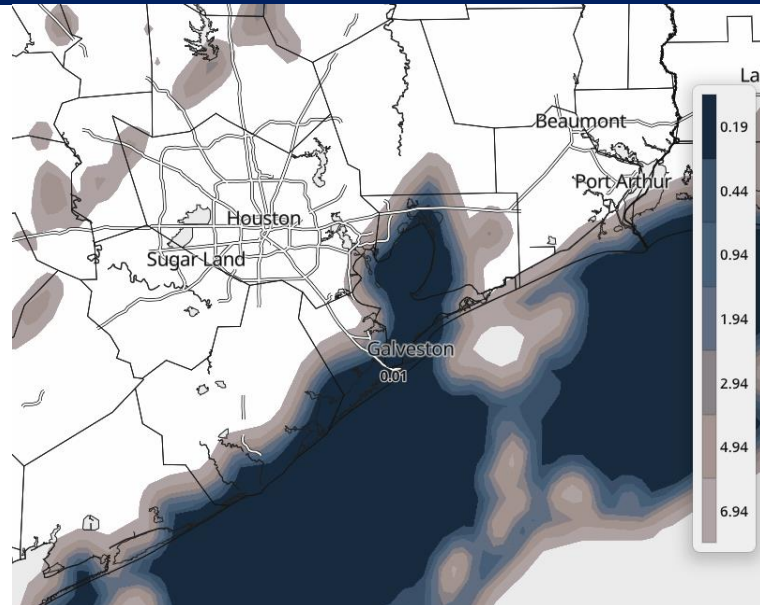
Between Morgan's Point and the Boarding Station: Patchy fog with visibilities of 1 – 2 miles, with some pockets having less than a mile of visibility, are possible through 11AM. The Station most at risk for fog will be the Boarding Station during this timeframe. Pockets of visibilities <0.50 mile at the Boarding Station will also be possible.

Houston Pilots Visibility Report

2 PM CT FRI VISIBILITY



8 PM CT FRI VISIBILITY



Confidence

Above
Normal

Below
Normal

TIMEFRAME DISCUSSED

THREAT

12 PM FRI – 12 AM
SAT

Low-Medium

N of Morgan's Point: These Stations are expected to stay fog-free. Occasions of mist may be possible after 7PM. Confidence is high here.

S of Morgan's Point: Localized pockets of fog may be able to linger in the bay from 12PM to 7PM, with visibilities of 1 – 2 miles. Most Stations will likely remain fog-free. After 7PM, fog will be able to build back in for all Stations S of Morgan's Point. Stations most at risk will be the Boarding Station and Station 11/12. Confidence on this is lower than normal.

Fog is expected to clear close to midnight as a front works into the area.

Houston Pilots Extended Range Visibility Report



Monday 01/12/2026

Fog is not favored.

Forecast Confidence



Wednesday 01/14/2026

Fog is not favored.

Forecast Confidence



Tuesday 01/13/2026

Fog is not favored.

Forecast Confidence



Chance for Fog

Monday AM	Unlikely
Monday PM	Unlikely
Tuesday AM	Unlikely
Tuesday PM	Unlikely
Wednesday AM	Unlikely
Wednesday PM	Unlikely

Houston Pilots Visibility Chart (miles)



Visibility	Fri 4 am	Fri 5 am	Fri 6 am	Fri 7 am	Fri 8 am	Fri 9 am	Fri 10 am	Fri 11 am	Fri 12 pm	Fri 1 pm	Fri 2 pm	Fri 3 pm	Fri 4 pm	Fri 5 pm	Fri 6 pm	Fri 7 pm	Fri 8 pm	Fri 9 pm	Fri 10 pm	Fri 11 pm	Sat 12 am	Sat 1 am	Sat 2 am	Sat 3 am
Houston Pilots N - 610 Bridge	3	3	2.5	2	2	2.5	4.9	6.9	6.9	9	9	9	9	9	9	9	9	7.9	6.9	5.9	4.9	4.9	4.9	4.9
Houston Pilots M - Kinder 1	3	3	2.5	2	2	2.5	4.9	6.9	7.9	9	9	9	9	9	9	9	9	7.9	6.9	5.9	4.9	4.9	4.9	4.9
Houston Pilots L - Greens Bayou	3	3	2.5	2	2	2.5	4.9	6.9	7.9	9	9	9	9	9	9	10	9	7.9	6.9	5.9	4.9	3.9	3.9	3.9
Houston Pilots K - Shell Crude	3	3	2.5	1.6	2	2.5	4.9	6.9	6.9	9	9	9	9	9	9	10	9	7.9	6.9	5.9	4.9	3.9	3.9	3.9
Houston Pilots J - Lynchburg Ferries	3	3	2.5	2	2	2.5	4.9	6.9	5.9	9	9	9	9	9	9	9	9	7.9	6.9	5.9	4.9	3.9	3.9	3.9
Houston Pilots I - Exxon 3	3	3	2.5	1.6	1.1	1.6	4.9	6.9	5.9	9	9	9	9	9	9	9	9	7.9	6.9	5.9	4.9	3.9	3.9	3.9
Houston Pilots H - Morgans Point	2.5	2.5	2	1.6	0.8	0.3	1.1	2.9	2.9	4.9	2.9	9	6.9	7.9	9	9	9	6.9	5.9	4.9	3.9	3.9	2.9	2.9
Houston Pilots G - 75/76	0.5	0.2	2	1.1	0.5	0.3	1.1	2	1.6	1.1	1.1	0.5	1.1	0.8	2.9	3.9	3.9	3.9	2.9	0.8	0.5	0.5	7	9
Houston Pilots F - 63/64	0.5	0.2	2	0.8	0.5	0.3	1.1	2	1.6	1.1	1.1	0.5	1.1	0.8	2.9	3.9	3.9	3.9	2.9	0.8	0.5	0.5	6	9
Houston Pilots E - 51/52	0.7	2.5	2	0.8	0.3	0.3	1.1	2.9	1.6	1.1	1.1	0.5	1.1	1.1	2.9	3.9	3.9	3.9	2.9	0.8	0.5	0.5	4	8
Houston Pilots D - 37/38	0.7	2.5	1.1	0.8	0.3	0.3	2.9	2.9	3.9	2.5	1.1	0.5	4.9	5.9	6.9	6.9	5.9	4.9	3.9	2.9	0.8	0.5	2.5	7
Houston Pilots C - 25/26	3	3	1.1	0.8	0.3	0.3	2.9	2.9	3.9	6.9	6.9	0.8	1.1	2.5	2.9	3.9	3.9	3.9	2.9	0.8	0.5	0.5	1.6	6
Houston Pilots B - 11/12	3	3	1.1	0.5	0.3	1.6	2.9	2.9	1.6	1.1	0.8	0.5	1.1	0.8	1.1	1.1	1.1	0.8	0.8	0.5	0.5	0.3	0.2	4
Houston Pilots A - 1 & 2 Bravo	2.5	0.7	0.2	0.3	0.3	1.6	2.9	2	1.6	1.1	0.8	0.5	0.5	0.8	1.1	1.1	1.1	0.8	0.8	0.5	0.5	0.3	0.2	0.2

NOTE: This is automated data that may/may not agree with the official BAM thinking that’s found on the daily slides or special visibility report slides. This data should be used as a guide only

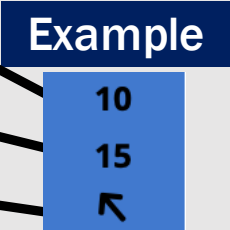
Houston Pilots Wind Chart



Forecast Confidence



Sustained Wind 10 Knots
Gusts 15 Knots
Wind from the SE



Wind	Fri 4 am	Fri 5 am	Fri 6 am	Fri 7 am	Fri 8 am	Fri 9 am	Fri 10 am	Fri 11 am	Fri 12 pm	Fri 1 pm	Fri 2 pm	Fri 3 pm	Fri 4 pm	Fri 5 pm	Fri 6 pm	Fri 7 pm	Fri 8 pm	Fri 9 pm	Fri 10 pm	Fri 11 pm	Sat 12 am	Sat 1 am	Sat 2 am	Sat 3 am
Houston Pilots N - 610 Bridge	3 10 ↑	3 8 ↑	3 7 ↑	2 6 ↑	2 7 ↑	3 7 ↑	3 7 ↑	5 8 ↑	6 10 ↑	6 12 ↑	6 13 ↑	7 15 ↑	7 15 ↑	7 14 ↑	7 13 ↑	6 13 ↑	6 13 ↑	6 12 ↑	6 13 →	6 13 →	6 13 ↓	7 13 ↓	7 15 ↓	8 16 ↓
Houston Pilots M - Kinder 1	3 10 ↑	3 8 ↑	3 7 ↑	2 6 ↑	2 7 ↑	3 7 ↑	3 7 ↑	5 8 ↑	6 10 ↑	6 12 ↑	6 13 ↑	7 15 ↑	7 15 ↑	7 14 ↑	7 13 ↑	6 13 ↑	6 13 ↑	6 12 ↑	6 13 →	6 13 →	6 13 ↓	7 13 ↓	7 15 ↓	8 16 ↓
Houston Pilots L - Greens Bayou	3 10 ↑	3 8 ↑	3 7 ↑	2 6 ↑	2 7 ↑	3 7 ↑	3 7 ↑	5 8 ↑	6 10 ↑	6 12 ↑	6 13 ↑	7 14 ↑	7 15 ↑	7 14 ↑	7 13 ↑	6 12 ↑	6 12 ↑	6 10 ↑	6 12 ↑	6 13 →	6 13 ↓	6 13 ↓	7 14 ↓	8 15 ↓
Houston Pilots K - Shell Crude	3 10 ↑	3 8 ↑	3 7 ↑	2 6 ↑	2 7 ↑	3 7 ↑	3 7 ↑	5 8 ↑	6 10 ↑	6 12 ↑	6 13 ↑	7 14 ↑	7 15 ↑	7 14 ↑	7 13 ↑	6 12 ↑	6 12 ↑	6 10 ↑	6 12 ↑	6 13 →	6 13 ↓	6 13 ↓	7 14 ↓	8 15 ↓
Houston Pilots J - Lynchburg Ferries	3 9 ↑	3 8 ↑	3 7 ↑	2 6 ↑	2 7 ↑	2 6 ↑	3 7 ↑	5 8 ↑	5 10 ↑	6 12 ↑	6 13 ↑	6 14 ↑	7 15 ↑	7 14 ↑	6 13 ↑	6 12 ↑	6 12 ↑	6 10 ↑	6 12 ↑	6 12 →	6 13 ↓	6 13 ↓	6 14 ↓	7 15 ↓
Houston Pilots I - Exxon 3	7 12 ↑	6 9 ↑	6 8 ↑	5 7 ↑	5 7 ↑	5 7 ↑	5 8 ↑	6 9 ↑	6 10 ↑	7 12 ↑	7 13 ↑	8 15 ↑	8 15 ↑	8 15 ↑	8 14 ↑	8 13 ↑	8 13 ↑	8 12 ↑	8 13 ↑	8 13 →	9 13 ↓	9 14 ↓	10 15 ↓	10 16 ↓
Houston Pilots H - Morgans Point	6 10 ↑	6 9 ↑	5 8 ↑	5 7 ↑	5 7 ↑	5 7 ↑	5 8 ↑	6 9 ↑	6 10 ↑	7 12 ↑	7 13 ↑	8 15 ↑	8 15 ↑	8 15 ↑	8 14 ↑	8 13 ↑	8 13 ↑	8 12 ↑	8 13 ↑	8 13 →	9 13 ↓	9 13 ↓	10 15 ↓	10 16 ↓
Houston Pilots G - 75/76	8 12 ↑	7 10 ↑	6 9 ↑	6 8 ↑	6 8 ↑	6 8 ↑	6 9 ↑	6 10 ↑	6 12 ↑	7 13 ↑	7 13 ↑	8 15 ↑	8 15 ↑	9 16 ↑	9 14 ↑	9 14 ↑	8 13 ↑	8 13 ↑	8 13 ↑	9 13 ↑	10 14 ↓	10 15 ↓	10 16 ↓	12 17 ↓
Houston Pilots F - 63/64	8 12 ↑	7 10 ↑	6 9 ↑	6 8 ↑	6 8 ↑	6 8 ↑	6 9 ↑	6 10 ↑	6 12 ↑	7 13 ↑	7 13 ↑	8 15 ↑	8 15 ↑	8 15 ↑	8 14 ↑	8 14 ↑	8 13 ↑	8 12 ↑	8 13 ↑	8 13 ↑	9 13 ↓	10 14 ↓	10 16 ↓	12 17 ↓
Houston Pilots E - 51/52	8 13 ↑	7 10 ↑	6 9 ↑	6 8 ↑	6 8 ↑	6 9 ↑	6 10 ↑	6 10 ↑	6 12 ↑	7 13 ↑	7 13 ↑	8 14 ↑	8 15 ↑	8 14 ↑	8 13 ↑	8 13 ↑	8 13 ↑	8 12 ↑	8 13 ↑	8 13 ↑	9 13 ↓	10 14 ↓	10 15 ↓	12 16 ↓
Houston Pilots D - 37/38	8 13 ↑	7 12 ↑	6 10 ↑	6 9 ↑	6 9 ↑	6 9 ↑	6 10 ↑	6 10 ↑	7 12 ↑	7 12 ↑	7 13 ↑	8 14 ↑	8 15 ↑	8 14 ↑	8 13 ↑	8 13 ↑	8 13 ↑	8 12 ↑	8 12 ↑	8 13 ↑	9 13 ↓	10 14 ↓	10 15 ↓	12 16 ↓
Houston Pilots C - 25/26	8 13 ↑	7 12 ↑	6 10 ↑	6 9 ↑	6 9 ↑	6 9 ↑	6 10 ↑	6 10 ↑	7 12 ↑	7 12 ↑	7 13 ↑	8 14 ↑	8 14 ↑	8 13 ↑	8 12 ↑	8 12 ↑	8 12 ↑	8 10 ↑	8 12 ↑	8 13 ↑	9 13 ↓	10 14 ↓	10 15 ↓	12 16 ↓
Houston Pilots B - 11/12	8 13 ↑	7 12 ↑	6 10 ↑	6 10 ↑	6 9 ↑	6 10 ↑	6 10 ↑	6 10 ↑	7 12 ↑	7 12 ↑	7 13 ↑	8 13 ↑	8 13 ↑	8 12 ↑	7 12 ↑	7 12 ↑	7 12 ↑	7 10 ↑	7 12 ↑	7 13 ↑	8 13 ↓	8 13 ↓	9 15 ↓	10 16 ↓
Houston Pilots A - 1 & 2 Bravo	10 15 ↑	9 14 ↑	8 13 ↑	8 13 ↑	8 12 ↑	7 12 ↑	7 12 ↑	7 12 ↑	7 12 ↑	6 12 ↑	6 12 ↑	6 12 ↑	7 13 ↑	7 13 ↑	7 12 ↑	8 13 ↑	8 13 ↑	8 13 ↑	8 13 ↑	9 13 ↑	10 14 ↓	10 15 ↓	12 16 ↓	13 17 ↓

NOTE: This is automated data that may/may not agree with the official BAM thinking that's found on the daily slides.
This data should be used as a guide only.

Houston Pilots: FRI. 01/09/2026

Forecast Discussion

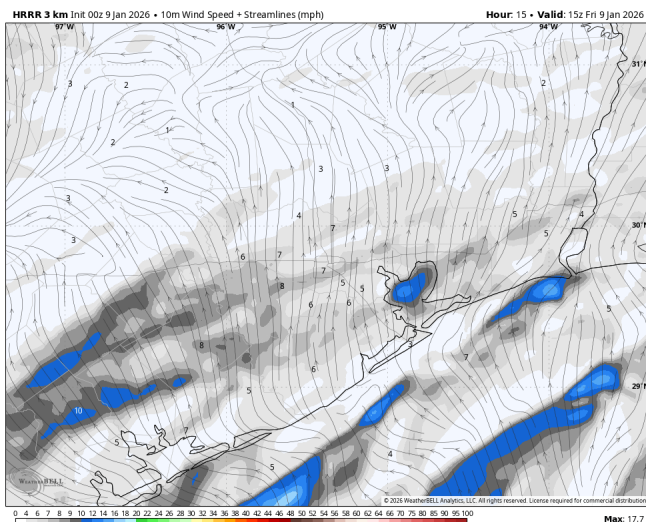
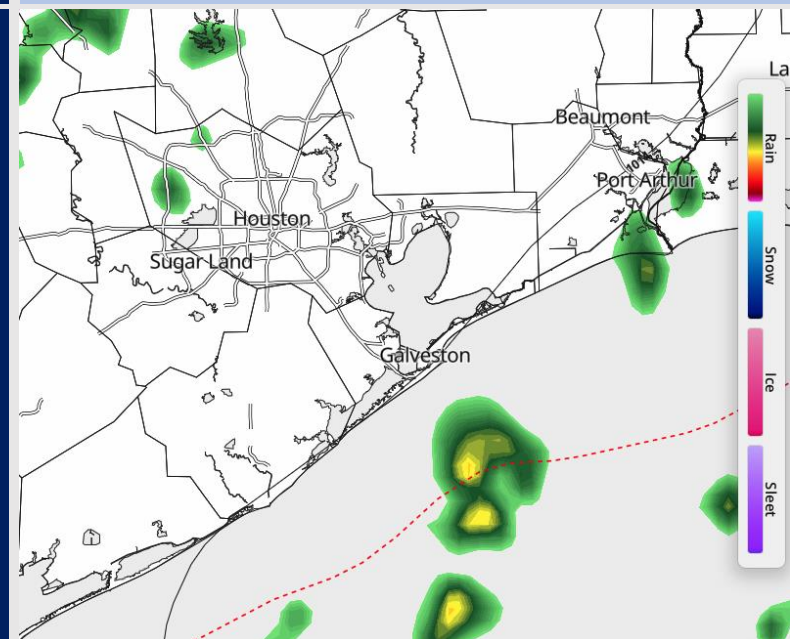
Precip: Isolated showers are possible through ~1PM before a few storms will be possible through the rest of the day. A few storms may be strong to locally severe from 1PM to 7PM. **The main risks if a Station is hit by a thunderstorm will include lightning, heavy downpours, wind gusts of 35+ kts, and large hail.**

Wind: Winds out of the S/SE until around 11PM when winds shift to blow from the NW. **N of Morgan's Point:** Winds at 4 – 9 kts. **S of Morgan's Point:** Winds at 5 – 10 kts. **A few gusts up to 20 kts will be possible from 4PM to 7PM.**

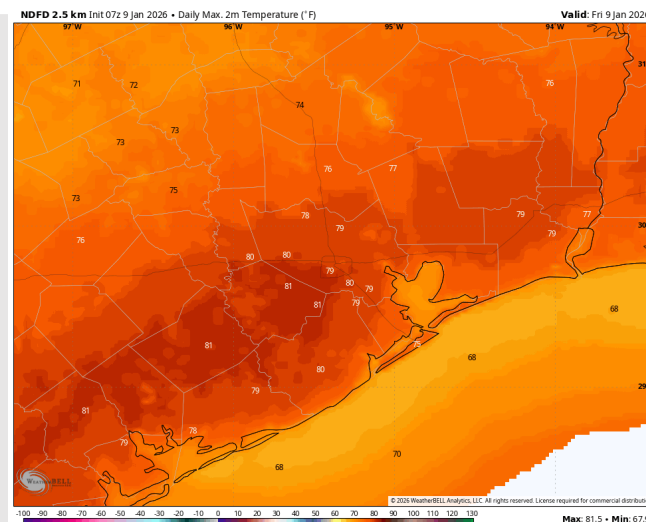
High Temps: **N of Morgan's Point:** Low 80s F. **S of Morgan's Point:** Low 70s F.

Visibility: Fog is likely especially for Stations S of Morgan's Point until 11 AM. **Some patches of Fog may be dense.** Visibility for the rest of the day may decrease due to heavy downpours.

Precip Image: 6 PM CT



Wind Speed:
9 AM CT



High Temps
FRI

Houston Pilots: SAT. 01/10/2026

Forecast Discussion

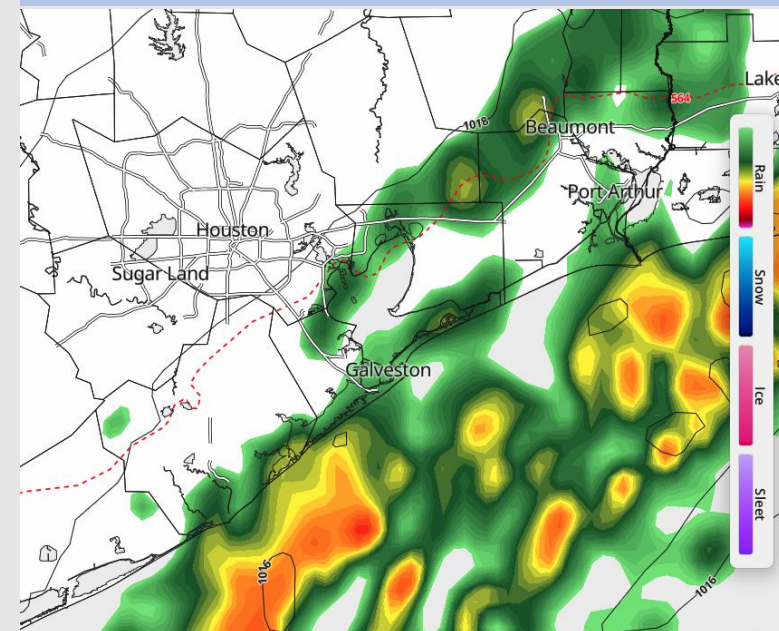
Precip: A line of showers and storms will clear out by 7AM. Additional scattered showers are possible from 2 PM – 10 PM.

Wind: Winds out of the NW through the day. **N of Morgan's Point:** Winds at 5 – 10 kts, increasing to 10 – 15 kts after 8AM. **Wind gusts up to 25 kts are in play throughout the day, slightly higher at 32 kts from 5AM to 12PM.** **S of Morgan's Point:** Winds at 15 – 20 kts, slightly higher at 18 – 24 kts at the Boarding Station. **Wind gusts up to 25 kts are in play, increasing up to 30 kts after 6AM and for the rest of the day. A few gusts of 32 – 38 kts will be possible from 5AM to 12PM.**

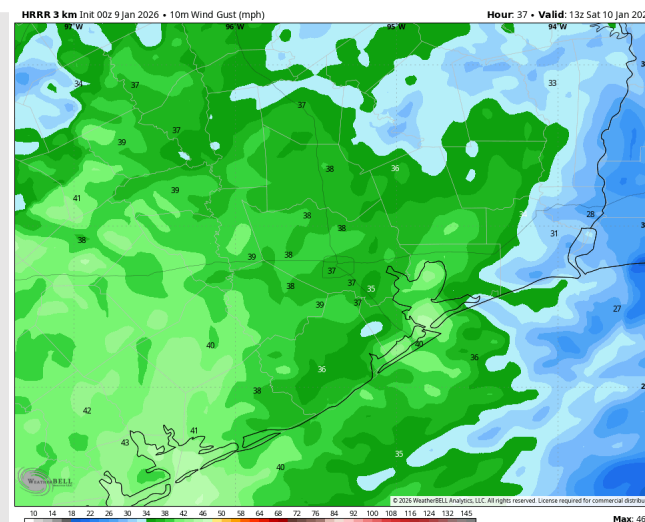
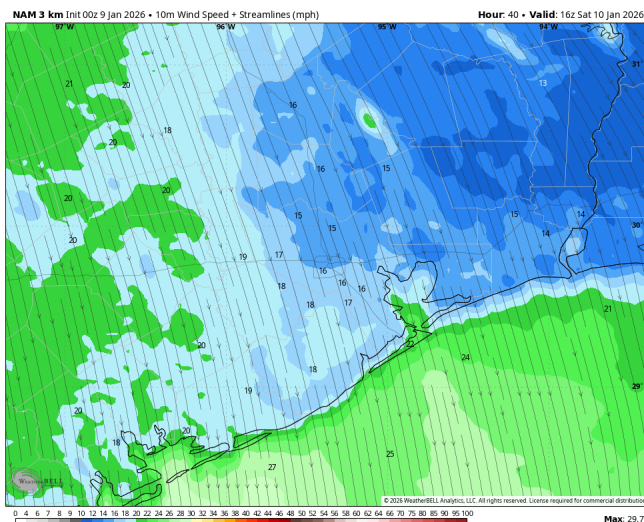
High Temps: **N of Morgan's Point:** Low 60s F. **S of Morgan's Point:** Mid 60s F.

Visibility: No fog concerns on SAT, but visibilities can be reduced in the AM from heavy downpours.

Precip Image: 4 AM CT



Wind Speed:
10 AM CT



**PEAK Wind
Gusts**

Houston Pilots: SUN. 01/11/2026

Forecast Discussion

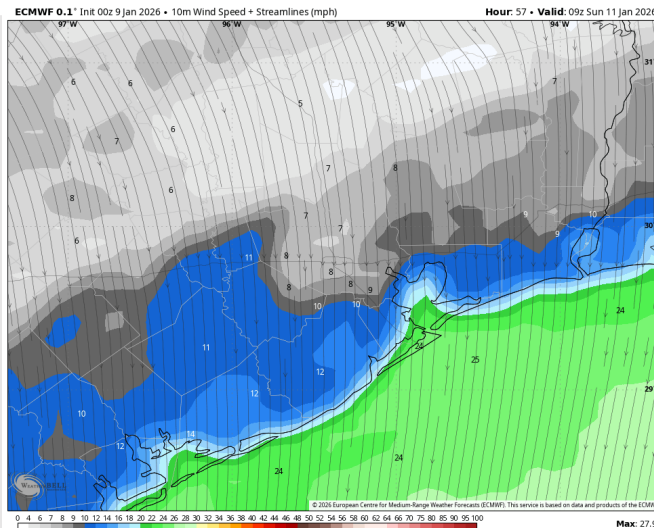
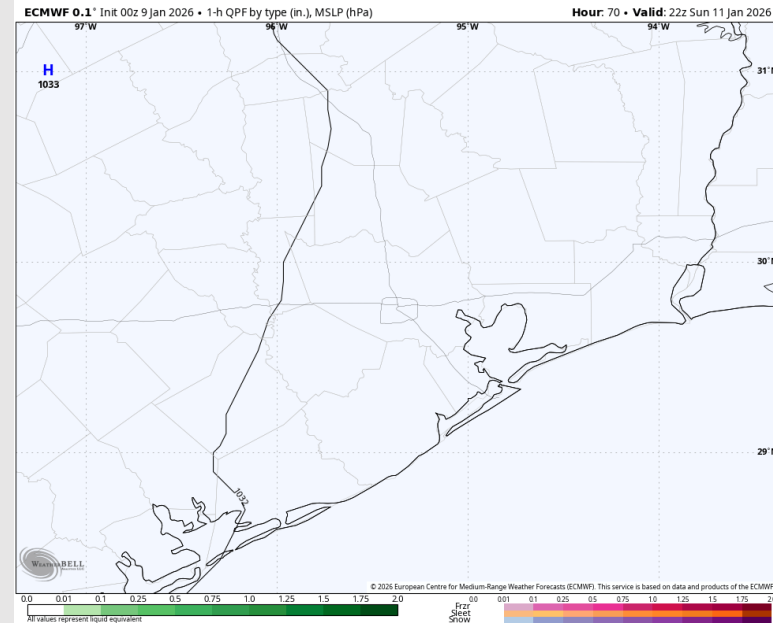
Precip: Favoring dry conditions.

Wind: Winds out of the N. **N of Morgan's Point:** Winds at 3 – 8 kts. **S of Morgan's Point:** Winds at 13 – 18 kts through 11AM, decreasing to 9 – 14 kts the remainder of the day. **Wind gusts up to 23 kts will be in play throughout the day for Stations S of Morgan's Point, with gusts up to 30 kts at the Boarding Station through 10AM.**

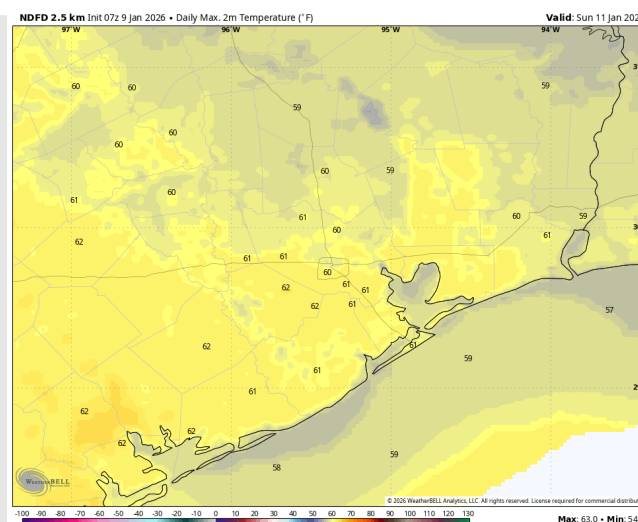
High Temps: **N of Morgan's Point:** Low 60s F. **S of Morgan's Point:** Upper 50s to low 60s F.

Visibility: No fog is favored.

Precip Image: 4 PM CT



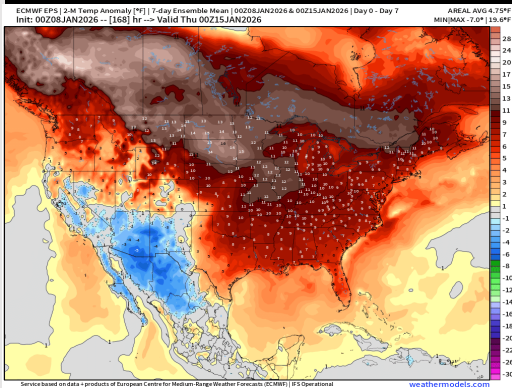
Wind Speed:
3 AM CT



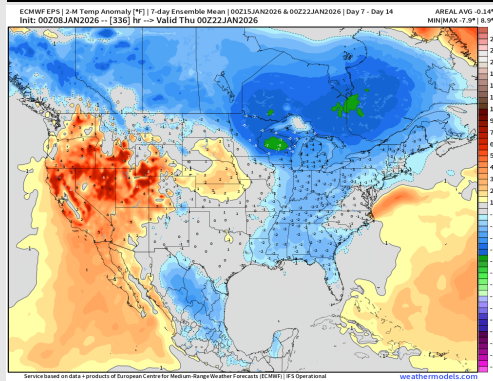
High Temps
SUN

Houston Pilots: 01/09/2026

Next 7 Day Temperature Departure



8-14 Day Temperature Departure

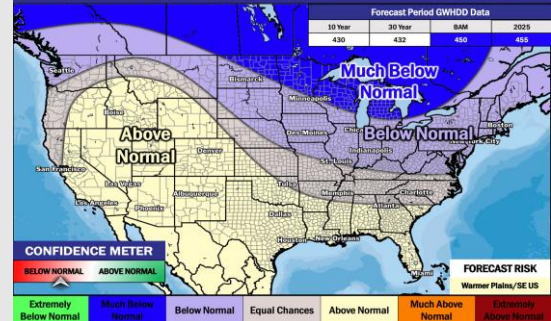


15-30 Day Temperature Departure

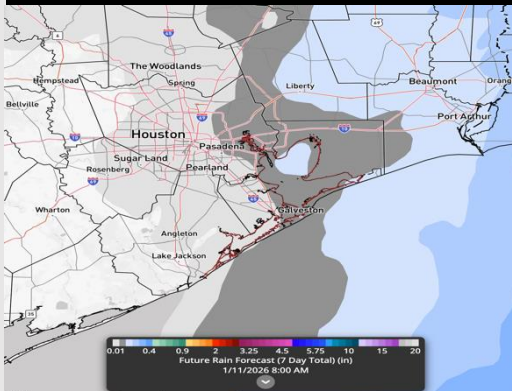
Week ¾ Temperature Outlook

January 20 - February 2, 2026 | Updated: 1/6/26

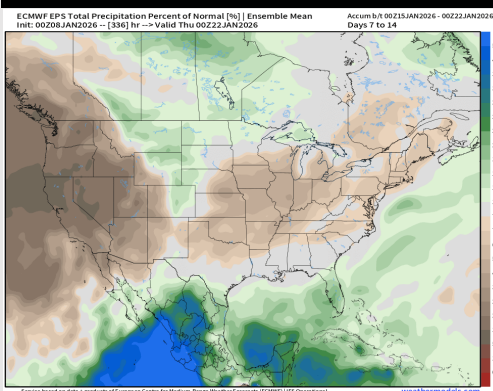
Forecaster: Walts



Next 7 Day Total Precipitation



8-14 Day % of Average Precip.

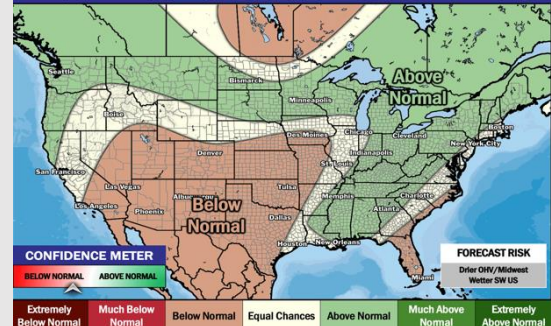


15-30 Day % of Average Precip.

Week ¾ Precipitation Outlook

January 20 - February 2, 2026 | Updated: 1/6/26

Forecaster: Walts



- Above/much above normal temps are favored over the next 7 days, with isolated rain chances over the next 7 days.
- Near normal temperatures and near normal rainfall favored in the Week 2 timeframe.
- Above normal temperatures and near normal rainfall expected for mid January.