

Houston Pilots Forecast Package



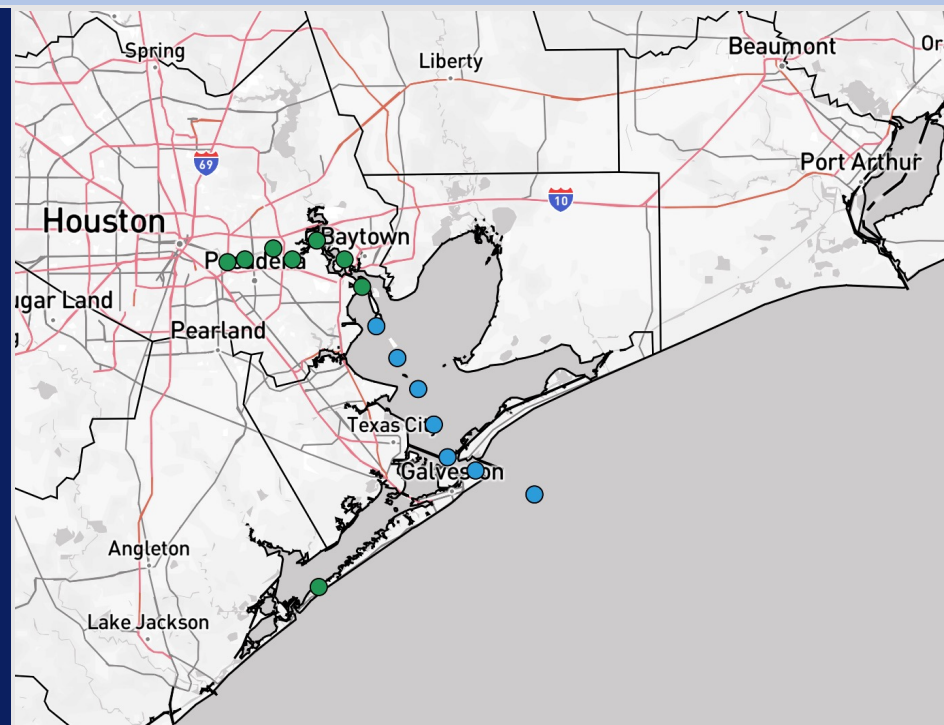
Updated: 1:20 PM CT

Saturday, December 27, 2025

Forecaster: Jakeb Wagner

Weather Headlines

- Patchy, dense fog will be possible in the bay through 2AM Monday. As water temperatures warm, coverage will become isolated during the day.
- Wind gusts of 35+ kts will be possible Monday for the boarding station! Wind gusts of 25 – 30 kts will be expected for ALL stations. Near Gale conditions will be possible for the Boarding Station!
- Outside of a few isolated showers, mostly dry conditions are favored through Monday.



Current Radar: 1:10 PM CT

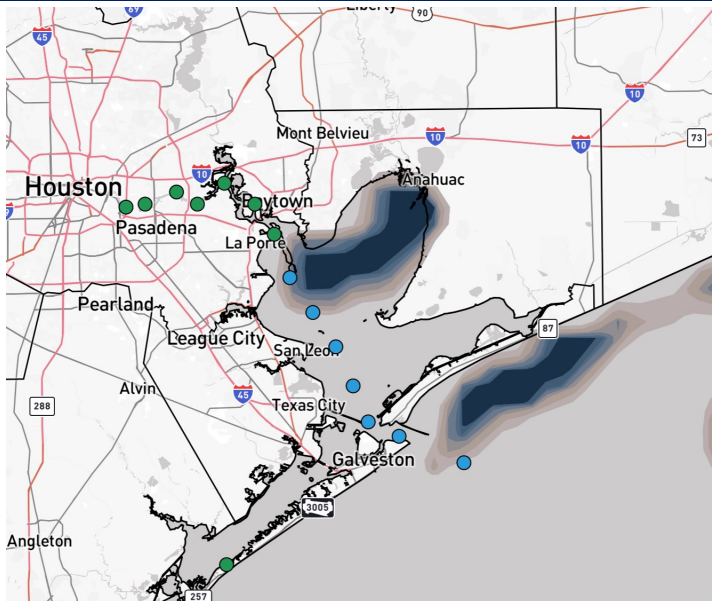
As always, please do not hesitate to reach out to us with any forecast questions at (317)-560-8122. Press 1 for forecast questions.



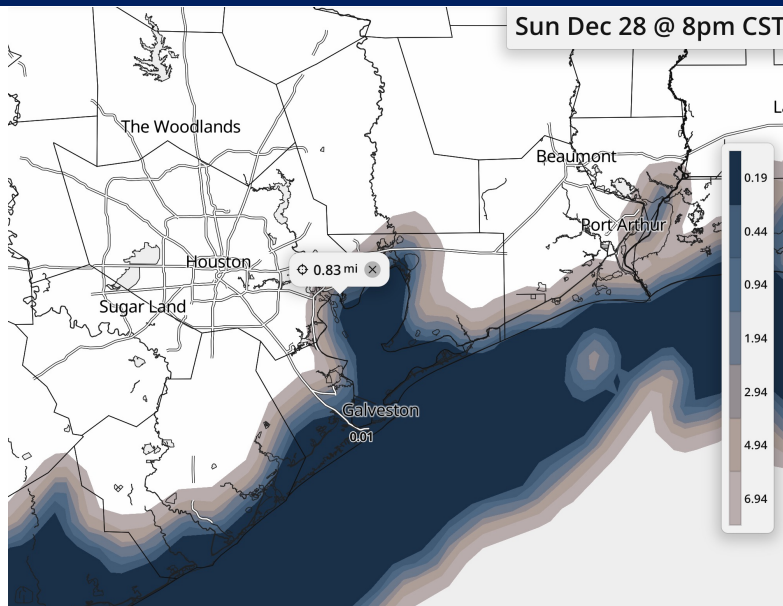
You can also access real-time forecast updates and 24/7 meteorological chat assistance on your Clarity app.

Houston Pilots Visibility Report

CURRENT VISIBILITY (1:15 PM CT)



12 PM CT SAT VISIBILITY



Confidence

Above
Normal

Below
Normal

TIMEFRAME
DISCUSSED

THREAT

NOW - 12 AM SUN

MEDIUM

Winds will continue to lightly blow in from the south today. Winds may be able to shift slightly from the SE to allow for fog to spread to stations between **Morgan's Point** and **Station 51/52** with the best timeframe for this to occur after 12PM. Visibilities <2 miles will be possible.

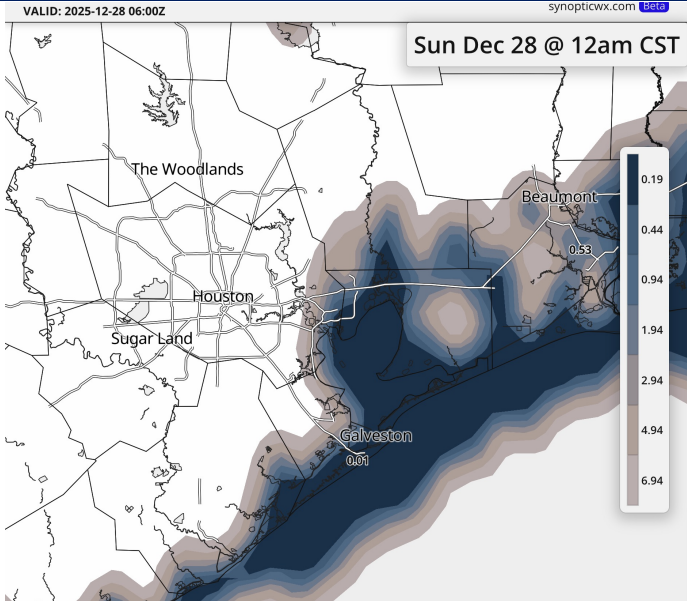
For **Stations N of Morgan's Point**, Fog is expected to move in by 8PM this evening with the help of southeasterly flow winds. This risk would be greatest for Stations south of Lynchburg Ferries.

Currently, fog **in the bay** will likely stay isolated-to-patchy in nature with dense fog pockets capable of reducing visibilities to <1 mile through 8PM.

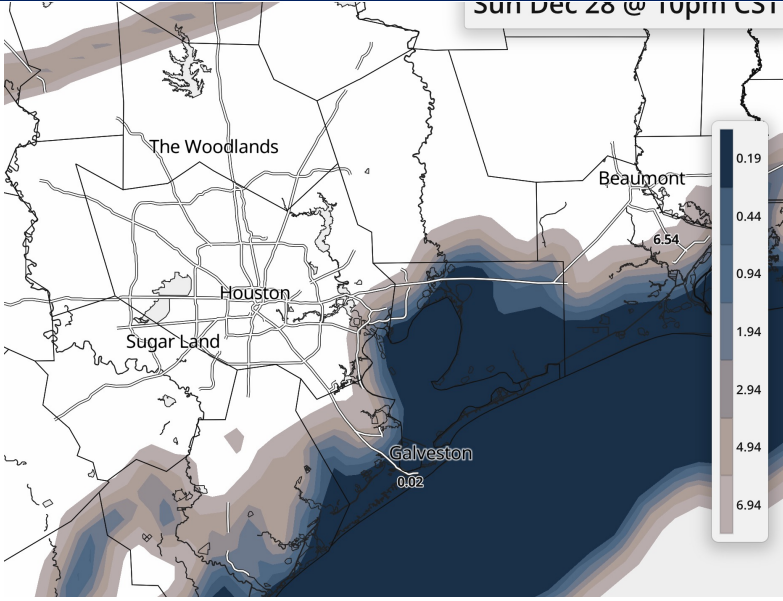
After 8PM, fog will likely become widespread for **Stations S of Morgan's Point**, with visibilities <0.5 mile.

Houston Pilots Visibility Report

12 AM CT SUN VISIBILITY



10 PM CT SUN VISIBILITY



Confidence

Above
Normal

Below
Normal

TIMEFRAME DISCUSSED

THREAT

12 AM SUN – 2 AM
MON

Medium

Patchy-to-widespread fog will be possible for **Stations S of Morgan's Point**, with visibilities <0.5 mile through 10AM. Due to warmer water temperatures, coverage of fog can become more isolated beyond 10AM.

For Stations **N of Morgan's Point**, fog will be possible from 12AM to 10AM, with visibilities <2 miles being possible. Very localized instances of <0.5 mile cannot be completely ruled out.

After 10AM, any fog that has formed **S of Morgan's Point** is expected to become more isolated in nature and less dense. A few isolated instances of visibilities <2 miles will still be in play from 10AM to 7PM.

After 7PM Sunday, fog is expected to become patchy through 2AM Monday, limiting visibilities to <1 mile. The front will move in at 2am and will clear the fog out.

Houston Pilots Extended Range Visibility Report



Tuesday 12/30/2025

No fog concerns Tuesday.

Forecast Confidence



Thursday 1/1/2026

No fog concerns Thursday.

Forecast Confidence



Wednesday 12/31/2025

No fog concerns Wednesday.

Forecast Confidence



Chance for Fog

Tuesday AM	Unlikely
Tuesday PM	Unlikely
Wednesday AM	Unlikely
Wednesday PM	Unlikely
Thursday AM	Unlikely
Thursday PM	Unlikely

Houston Pilots Visibility Chart (miles)



Visibility	Sat 3 pm	Sat 4 pm	Sat 5 pm	Sat 6 pm	Sat 7 pm	Sat 8 pm	Sat 9 pm	Sat 10 pm	Sat 11 pm	Sun 12 am	Sun 1 am	Sun 2 am	Sun 3 am	Sun 4 am	Sun 5 am	Sun 6 am	Sun 7 am	Sun 8 am	Sun 9 am	Sun 10 am	Sun 11 am	Sun 12 pm	Sun 1 pm	Sun 2 pm
Houston Pilots N - 610 Bridge	10	10	10	10	10	10	10	10	10	7.9	6.9	6.9	6.9	5.9	5.9	4.9	4.9	3.9	4.9	6.9	10	10	10	10
Houston Pilots M - Kinder 1	10	10	10	10	10	10	10	10	10	9	6.9	6.9	6.9	5.9	5.9	5.9	5.9	3.9	4.9	6.9	9	10	10	10
Houston Pilots L - Greens Bayou	10	10	10	10	10	10	10	10	10	9	6.9	6.9	6.9	5.9	5.9	4.9	5.9	3.9	4.9	5.9	9	10	10	10
Houston Pilots K - Shell Crude	10	10	10	10	10	10	10	10	10	10	6.9	6.9	6.9	5.9	5.9	5.9	5.9	3.9	3.9	5.9	9	10	10	10
Houston Pilots J - Lynchburg Ferries	10	10	10	10	10	10	10	10	10	7.9	6.9	6.9	6.9	5.9	5.9	4.9	4.9	3.9	4.9	5.9	9	10	10	10
Houston Pilots I - Exxon 3	10	10	10	10	10	10	10	10	10	7.9	6.9	5.9	6.9	5.9	5.9	5.9	5.9	3.9	3.9	5.9	9	10	10	10
Houston Pilots H - Morgans Point	10	10	10	10	10	10	10	6.9	0.8	4.9	0.3	0.8	0.5	0.5	0.5	0.5	0.5	0.5	0.3	2.9	6.9	7.9	10	10
Houston Pilots G - 75/76	10	10	10	10	10	10	0.5	0.8	0.8	0.3	0.3	0.3	0.3	0.3	0.3	0.3	0.3	0.3	0.3	0.5	3.9	6.9	10	10
Houston Pilots F - 63/64	10	10	10	10	10	10	0.5	0.8	0.8	0.3	0.3	0.3	0.3	0.3	0.3	0.3	0.3	0.3	0.3	0.5	3.9	6.9	9	10
Houston Pilots E - 51/52	10	10	10	10	10	0.7	0.5	10	10	9	3.9	6.9	6.9	6.9	5.9	4.9	4.9	3.9	2.9	5.9	6.9	9	9	9
Houston Pilots D - 37/38	10	10	10	10	10	10	10	10	10	10	9	6.9	6.9	6.9	5.9	5.9	4.9	3.9	2.9	5.9	6.9	9	8	9
Houston Pilots C - 25/26	10	10	10	10	10	10	10	10	10	10	9	6.9	6.9	6.9	5.9	5.9	4.9	3.9	2.9	4.9	6.9	9	7	8
Houston Pilots B - 11/12	10	10	10	10	10	10	10	10	10	10	9	6.9	6.9	6.9	5.9	5.9	4.9	3.9	2.9	4.9	6.9	9	6	7
Houston Pilots A - 1 & 2 Bravo	10	10	10	10	10	10	10	10	10	9	6.9	6.9	6.9	6.9	5.9	5.9	5.9	4.9	3.9	4.9	6.9	7.9	7	7

NOTE: This is automated data that may/may not agree with the official BAM thinking that's found on the daily slides or special visibility report slides. This data should be used as a guide only

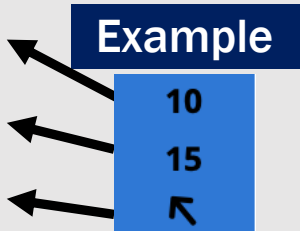
Houston Pilots Wind Chart



Forecast Confidence



Sustained Wind 10 Knots
Gusts 15 Knots
Wind from the SE



Wind	Sat 3 pm	Sat 4 pm	Sat 5 pm	Sat 6 pm	Sat 7 pm	Sat 8 pm	Sat 9 pm	Sat 10 pm	Sat 11 pm	Sun 12 am	Sun 1 am	Sun 2 am	Sun 3 am	Sun 4 am	Sun 5 am	Sun 6 am	Sun 7 am	Sun 8 am	Sun 9 am	Sun 10 am	Sun 11 am	Sun 12 pm	Sun 1 pm	Sun 2 pm
Houston Pilots N - 610 Bridge	10 ↑	10 ↑	10 ↑	10 ↑	9 ↑	8 ↑	8 ↑	8 ↑	8 ↑	8 ↑	7 ↑	7 ↑	7 ↑	7 ↑	7 ↑	6 ↑	6 ↑	6 ↑	7 ↑	8 ↑	9 ↑	10 ↑	10 ↑	10 ↑
Houston Pilots M - Kinder 1	9 ↑	10 ↑	10 ↑	10 ↑	9 ↑	8 ↑	8 ↑	8 ↑	8 ↑	7 ↑	7 ↑	7 ↑	7 ↑	7 ↑	7 ↑	6 ↑	6 ↑	6 ↑	7 ↑	8 ↑	9 ↑	10 ↑	10 ↑	10 ↑
Houston Pilots L - Greens Bayou	9 ↑	10 ↑	10 ↑	10 ↑	9 ↑	8 ↑	8 ↑	7 ↑	7 ↑	7 ↑	7 ↑	7 ↑	7 ↑	7 ↑	6 ↑	6 ↑	6 ↑	6 ↑	7 ↑	8 ↑	9 ↑	10 ↑	10 ↑	10 ↑
Houston Pilots K - Shell Crude	10 ↑	10 ↑	10 ↑	10 ↑	9 ↑	8 ↑	8 ↑	7 ↑	7 ↑	7 ↑	7 ↑	7 ↑	7 ↑	7 ↑	6 ↑	6 ↑	6 ↑	6 ↑	7 ↑	8 ↑	8 ↑	10 ↑	10 ↑	10 ↑
Houston Pilots J - Lynchburg Ferries	10 ↑	10 ↑	10 ↑	10 ↑	9 ↑	8 ↑	8 ↑	7 ↑	7 ↑	6 ↑	6 ↑	6 ↑	6 ↑	6 ↑	6 ↑	6 ↑	6 ↑	6 ↑	6 ↑	7 ↑	8 ↑	10 ↑	10 ↑	10 ↑
Houston Pilots I - Exxon 3	12 ↑	13 ↑	13 ↑	13 ↑	13 ↑	12 ↑	10 ↑	10 ↑	10 ↑	10 ↑	10 ↑	10 ↑	10 ↑	10 ↑	10 ↑	9 ↑	8 ↑	8 ↑	9 ↑	9 ↑	10 ↑	10 ↑	12 ↑	13 ↑
Houston Pilots H - Morgans Point	12 ↑	13 ↑	13 ↑	13 ↑	12 ↑	12 ↑	10 ↑	10 ↑	10 ↑	10 ↑	10 ↑	10 ↑	10 ↑	10 ↑	9 ↑	8 ↑	8 ↑	8 ↑	9 ↑	10 ↑	10 ↑	10 ↑	12 ↑	13 ↑
Houston Pilots G - 75/76	12 ↑	13 ↑	13 ↑	13 ↑	13 ↑	12 ↑	12 ↑	10 ↑	10 ↑	10 ↑	10 ↑	10 ↑	12 ↑	10 ↑	10 ↑	10 ↑	10 ↑	10 ↑	10 ↑	10 ↑	10 ↑	12 ↑	12 ↑	13 ↑
Houston Pilots F - 63/64	10 ↑	13 ↑	13 ↑	13 ↑	12 ↑	12 ↑	10 ↑	10 ↑	10 ↑	10 ↑	10 ↑	10 ↑	10 ↑	10 ↑	10 ↑	10 ↑	10 ↑	10 ↑	10 ↑	10 ↑	10 ↑	10 ↑	12 ↑	12 ↑
Houston Pilots E - 51/52	10 ↑	12 ↑	12 ↑	10 ↑	10 ↑	10 ↑	10 ↑	10 ↑	10 ↑	10 ↑	10 ↑	10 ↑	10 ↑	10 ↑	10 ↑	10 ↑	10 ↑	10 ↑	10 ↑	10 ↑	10 ↑	10 ↑	10 ↑	10 ↑
Houston Pilots D - 37/38	10 ↑	10 ↑	10 ↑	10 ↑	10 ↑	10 ↑	10 ↑	10 ↑	10 ↑	10 ↑	10 ↑	10 ↑	10 ↑	10 ↑	10 ↑	10 ↑	10 ↑	10 ↑	10 ↑	10 ↑	10 ↑	10 ↑	10 ↑	10 ↑
Houston Pilots C - 25/26	10 ↑	10 ↑	10 ↑	10 ↑	10 ↑	10 ↑	9 ↑	10 ↑	10 ↑	10 ↑	10 ↑	10 ↑	10 ↑	10 ↑	10 ↑	10 ↑	10 ↑	10 ↑	10 ↑	10 ↑	10 ↑	10 ↑	10 ↑	10 ↑
Houston Pilots B - 11/12	9 ↑	10 ↑	9 ↑	9 ↑	8 ↑	8 ↑	8 ↑	8 ↑	8 ↑	9 ↑	9 ↑	9 ↑	9 ↑	9 ↑	9 ↑	9 ↑	9 ↑	9 ↑	9 ↑	9 ↑	9 ↑	9 ↑	10 ↑	10 ↑
Houston Pilots A - 1 & 2 Bravo	8 ↑	8 ↑	9 ↑	9 ↑	10 ↑	10 ↑	10 ↑	10 ↑	10 ↑	10 ↑	12 ↑	12 ↑	12 ↑	12 ↑	12 ↑	12 ↑	12 ↑	10 ↑	10 ↑	10 ↑	10 ↑	10 ↑	9 ↑	9 ↑

NOTE: This is automated data that may/may not agree with the official BAM thinking that's found on the daily slides.
This data should be used as a guide only.

Houston Pilots: SAT. 12/27/2025

Forecast Discussion

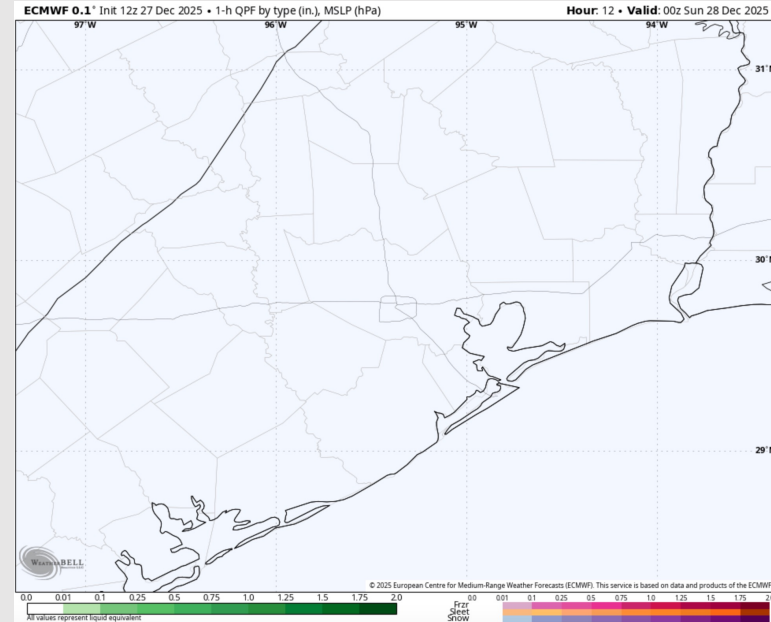
Precip: Dry conditions favored the rest of the day.

Wind: Winds will be generally out of the S. **N of Morgan's Point:** Winds of 2 – 7 kts. **S of Morgan's Point:** Winds will be at 7 – 12 kts.

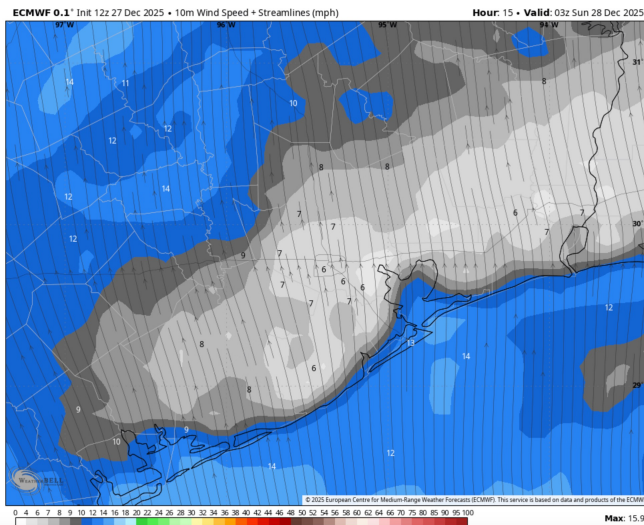
Low Temps: **N of Morgan's Point:** Mid 60s F. **S of Morgan's Point:** Upper 60s F.

Visibility: Isolated-to-patchy instances of fog possible through 8PM in the bay. Confidence is lower than normal due to warming water temperatures. See visibility slide for more info!

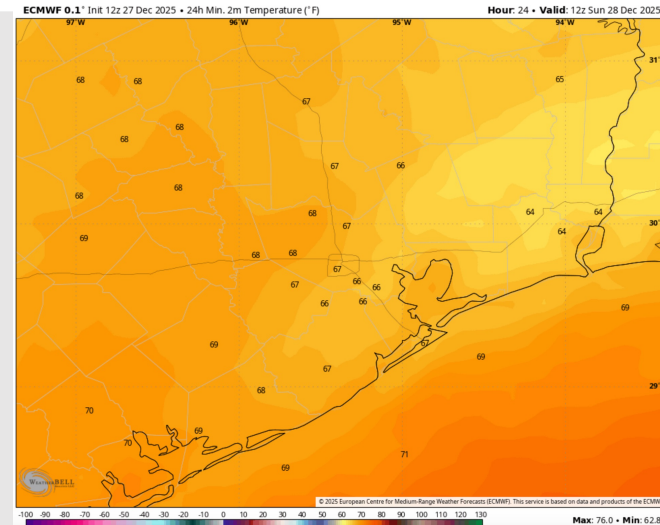
Precip Image: 6 PM CT



Wind Speed:
9 PM CT



Low Temps
Sunday AM



Houston Pilots: SUN. 12/28/2025

Forecast Discussion

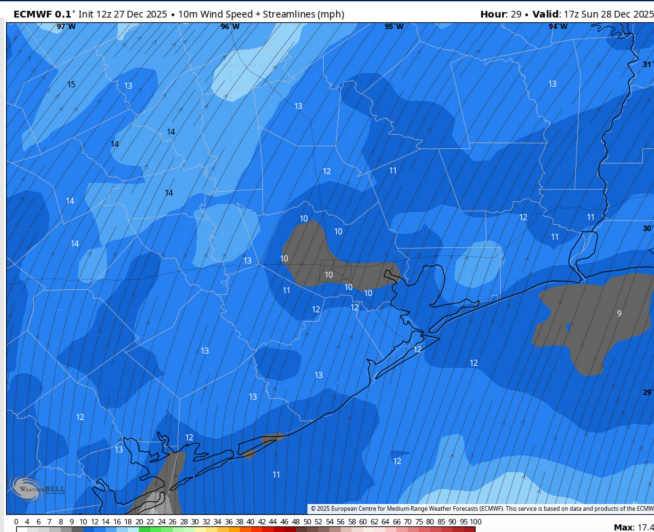
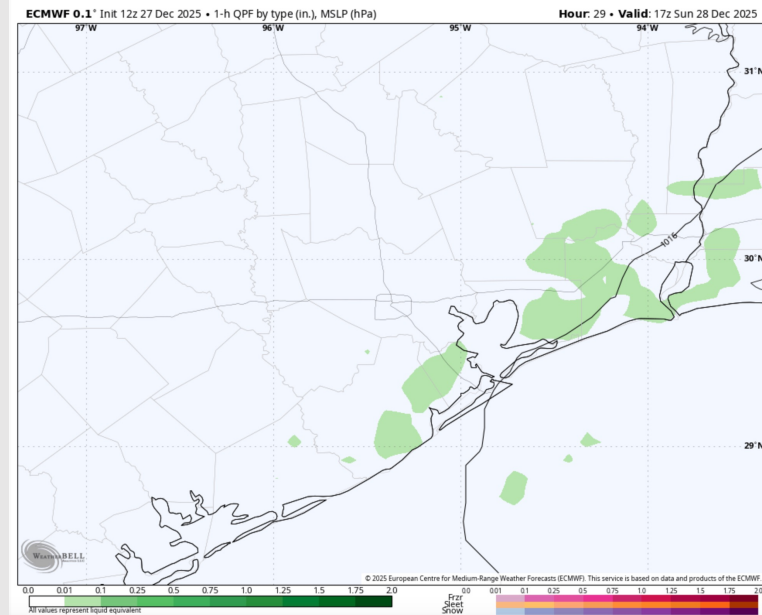
Precip: Isolated light showers will be possible from 9AM – 2PM, however, most will stay dry.

Wind: Winds will be out of the SW. **N of Morgan's Point:** Winds of 5 – 10 kts. **S of Morgan's Point:** Winds of 6 - 11 kts. **Wind gusts up to 20 kts will be possible from 10 AM – 3PM for all stations.**

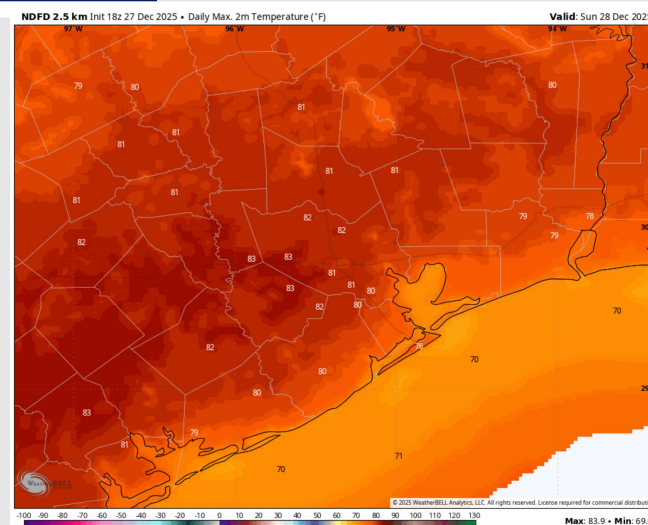
High Temps: **N of Morgan's Point:** Low 80s F. **S of Morgan's Point:** Low 70s F.

Visibility: Patchy dense fog will be likely Sunday morning with isolated pockets lingering through the day. See visibility slide for more info!

Precip Image: 11 AM CT



Wind Speed:
11 AM CT



High Temps
Sunday

Houston Pilots: MON. 12/29/2025

Forecast Discussion

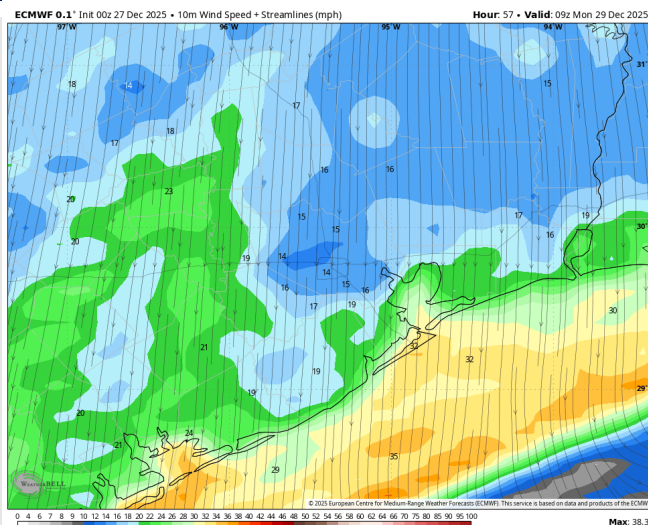
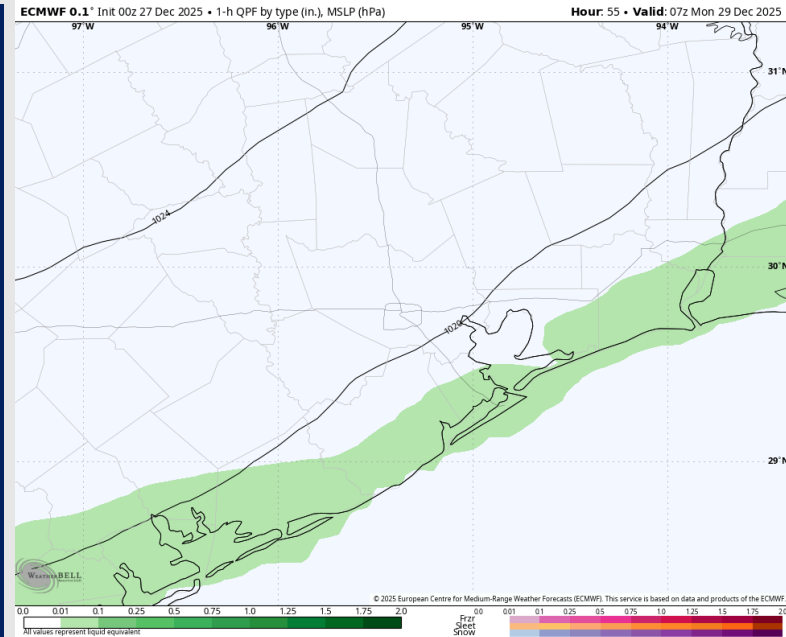
Precip: Quick passing line of showers favored from 12AM to 2AM.

Wind: Winds will quickly shift from blowing from the SW to the N by 1AM.
N of Morgan's Point: Winds of 10 – 15 kts through the day. **Wind gusts of 25 – 30 kts in play through 4PM.** **S of Morgan's Point:** Winds of 20 – 25 kts through the day. Winds at the Boarding Station expected to be at 25 – 30 kts from 1AM to 11AM. Wind gusts up to 35+ kts through 2PM, decreasing to 25 – 30 kts after 2PM.

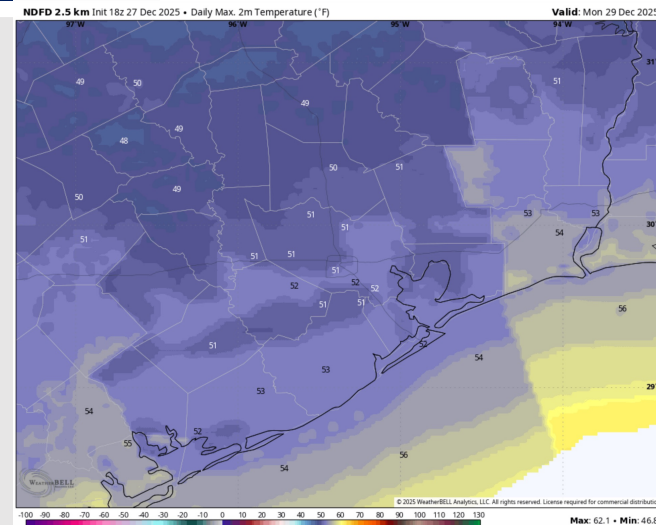
High Temps: **N of Morgan's Point:** Mid 50s F. **S of Morgan's Point:** Mid 50s F.

Visibility: Patchy dense fog will be likely through 2AM-CT, prior to the entrance of the front. Low confidence currently on the exact dissipation.

Precip Image: 1 AM CT



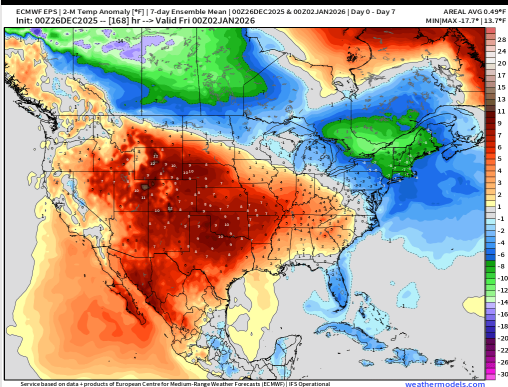
Wind Speed:
3 AM CT



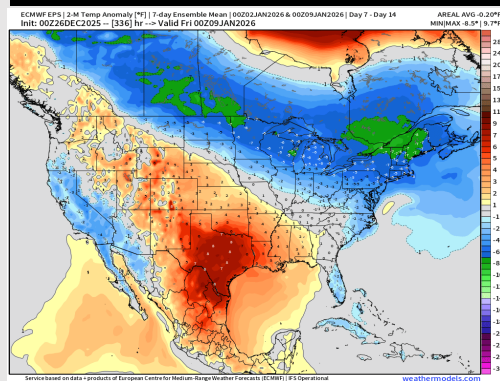
High Temps
Monday

Houston Pilots: 12/27/25

Next 7 Day Temperature Departure

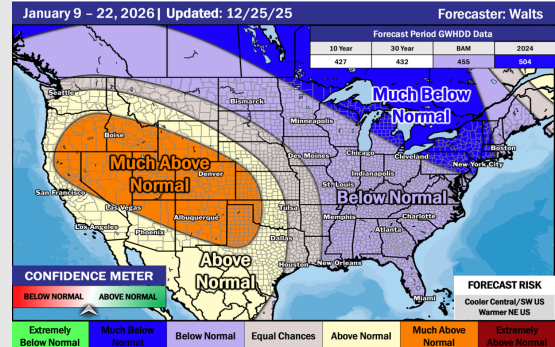


8-14 Day Temperature Departure

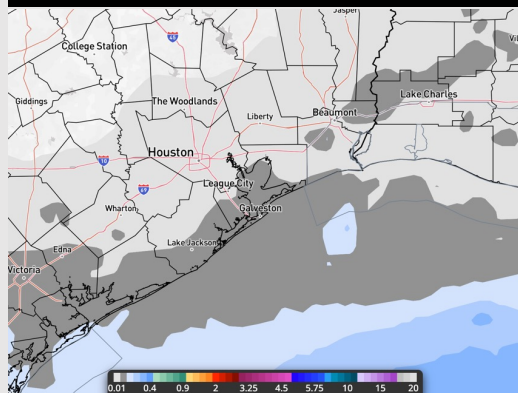


15-30 Day Temperature Departure

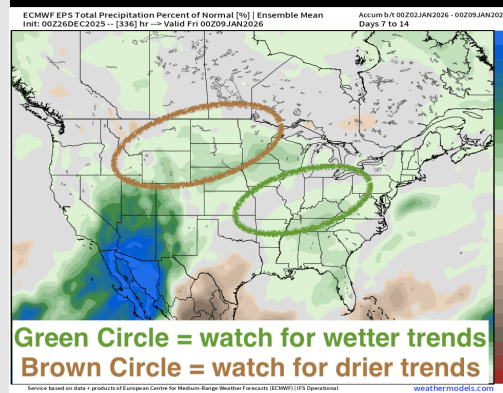
Week ¾ Temperature Outlook



Next 7 Day Total Precipitation

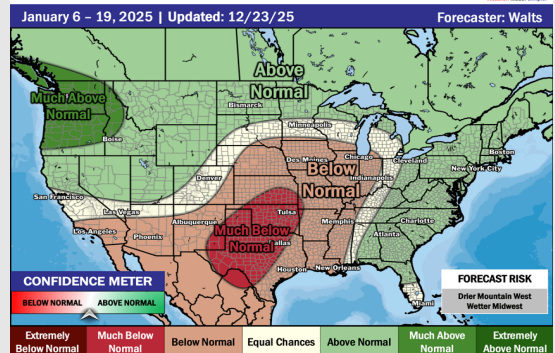


8-14 Day % of Average Precip.



15-30 Day % of Average Precip.

Week ¾ Precipitation Outlook



- Much above normal temps are favored over the next 7 days, with only minimal/isolated rain chances over the next 7 days.
- Above normal temperatures and below normal rainfall favored in the Week 2 timeframe.
- Above normal temperatures and below normal rainfall expected the first part of January.