

# Houston Pilots Forecast Package



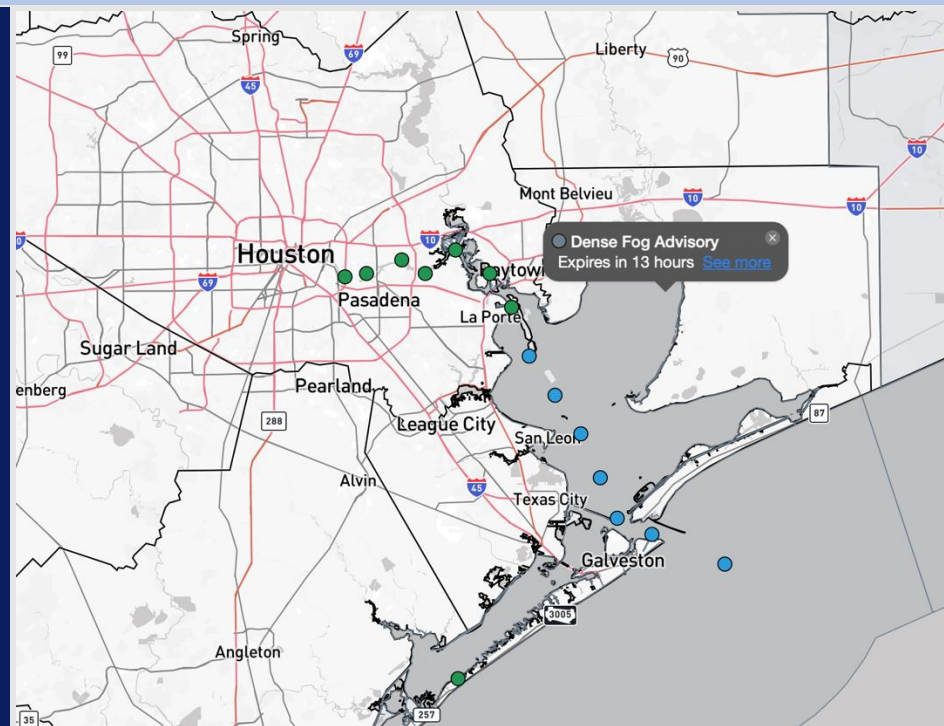
Updated: 8:05 PM CT

Friday, December 26, 2025

Forecaster: Lang/Kleitsch

## Weather Headlines

- Favoring mostly dry conditions for the next 72 hours.
- A multi-day sea fog event remains in the forecast through at least SAT AM with medium to high confidence. Additional fog possible on SAT PM into SUN AM as well with lower confidence.
- Gusty winds of 30 – 35 kts come into play late Sunday and into Monday.



Current Radar: 8:05 PM CT

As always, please do not hesitate to reach out to us with any forecast questions at (317)-560-8122. Press 1 for forecast questions.



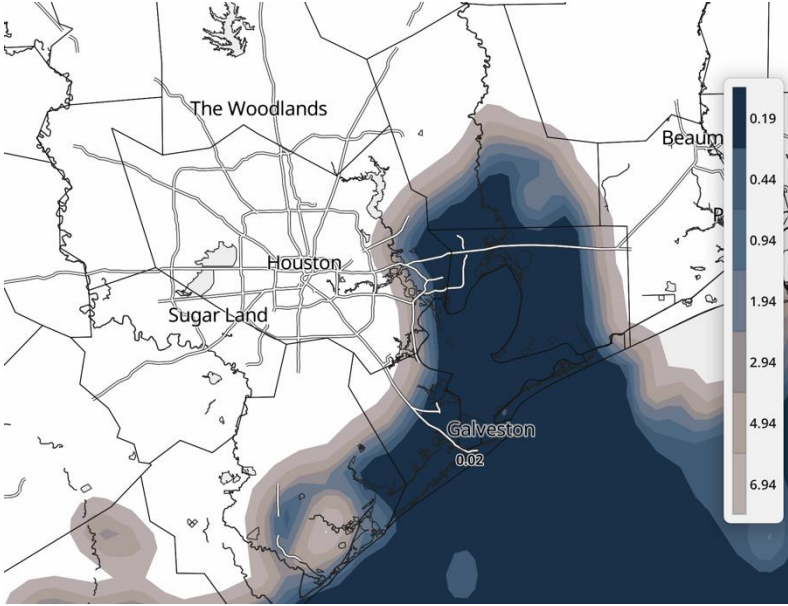
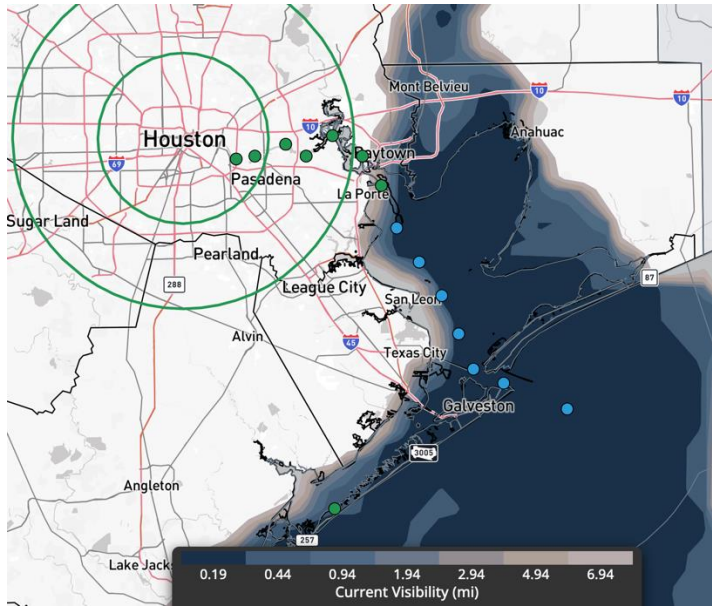
You can also access real-time forecast updates and 24/7 meteorological chat assistance on your [Clarity](#) app.

# Houston Pilots Visibility Report

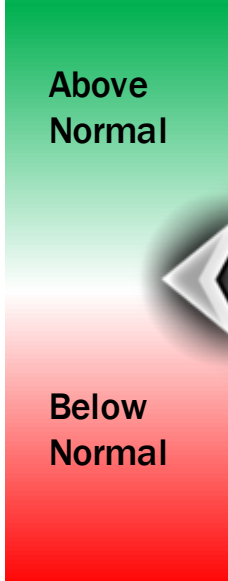


CURRENT VISIBILITY (7:30PM CT)

10 PM CT THU VISIBILITY



Confidence



TIMEFRAME DISCUSSED	THREAT
NOW – 12 AM FRI	HIGH

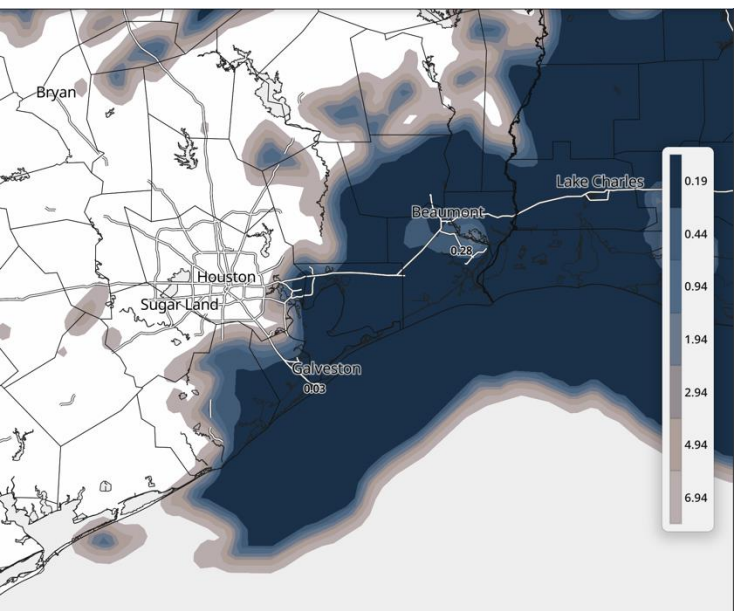
Fog is expected to continue to expand in coverage and density through 9PM, becoming widespread S of Morgan’s Point with visibilities less than 1 mile and pockets less than a 0.50 mile.

Patchy fog is expected to work N of Morgan’s Point after 9PM. Some areas may see pockets of mist rather than fog at times, but regardless, visibilities < 2 miles are expected.

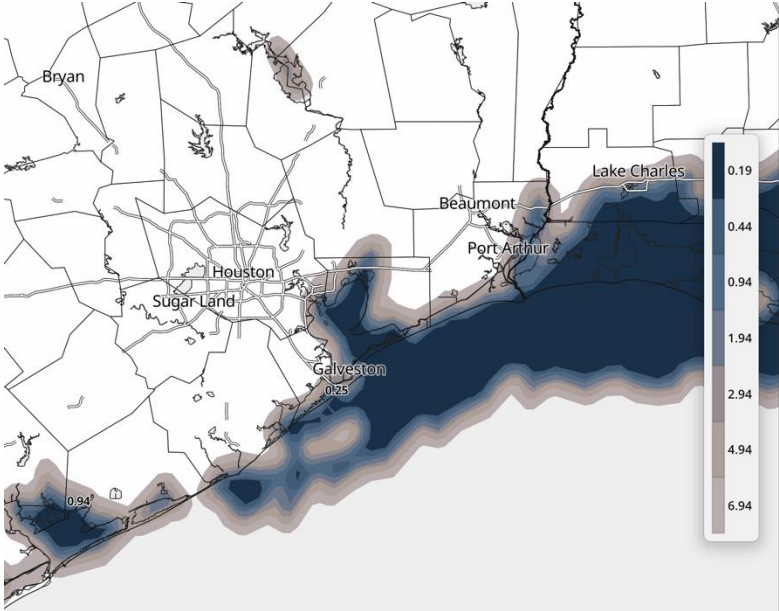
Widespread fog will continue through THU PM into FRI AM. Visibilities of 0.5 mile or less will be possible during this time for all Stations, with the greatest risk for widespread fog S of Morgan’s Point.

# Houston Pilots Visibility Report

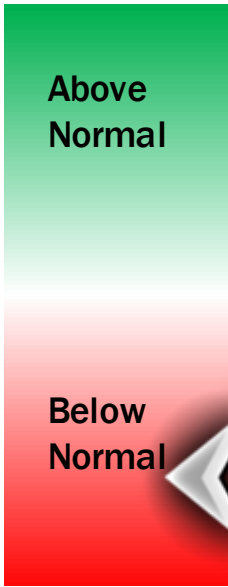
## 4 AM CT FRI VISIBILITY



## 10 PM CT FRI VISIBILITY



## Confidence



TIMEFRAME DISCUSSED	THREAT
12 AM FRI – 12 AM SAT	MED-HIGH

While there is lower confidence how long fog can remain **N of Morgan's Point** FRI AM, current thinking is that visibilities < 1 mile are to be expected for all Stations through 8AM.

A gradual decrease in coverage/ density is expected from 8 AM – 12 PM **S of Morgan's Point**. However, some patches of dense fog of less than 1 mile visibility will likely continue to linger in spots. "Highest" coverage would be near the **Boarding Station and 25/26**. Current thinking is that visibilities from 8AM -12 PM will be better (higher) vs that of TUE, WED, and THU.

Best window for 1 mile or higher visibility will be from 12 – 7 PM. Still some more isolated patches of 1 mile or less visibility will be possible, primarily near the **Boarding station**. Current thinking is that visibilities through the afternoon will be better (higher) vs that of TUE, WED, and THU.

From 7 – 9 PM, patchy fog will return, primarily for stations **S of Morgan's Point**. Coverage of visibilities of 1 mile or less are likely patchy with highest coverage towards the **Boarding Station**.

From 9 PM to into SAT AM visibilities of 1 mile or less will be likely for **south of Morgan's Point**. Confidence is lower for stations north of **Morgans Point** – with activity being isolated post 11 PM FRI.

# Houston Pilots Extended Range Visibility Report



## Sunday 12/28/2025

Isolated instances of fog will be possible mainly S of Morgan’s Point SUN AM and SUN PM. Confidence is lower at this time due to wind direction and warming waters.

### Forecast Confidence



## Tuesday 12/30/2025

No fog concerns Tuesday.

### Forecast Confidence



## Monday 12/29/2025

Very localized instances of fog will be in play through 3 AM before a front rolls through. Confidence is lower on how dense fog risks will be.

### Forecast Confidence



### Chance for Fog

Sunday AM	Possible
Sunday PM	Possible
Monday AM	Possible
Monday PM	Unlikely
Tuesday AM	Unlikely
Tuesday PM	Unlikely



# Houston Pilots Visibility Chart (miles)



Visibility	Thu 3 pm	Thu 4 pm	Thu 5 pm	Thu 6 pm	Thu 7 pm	Thu 8 pm	Thu 9 pm	Thu 10 pm	Thu 11 pm	Fri 12 am	Fri 1 am	Fri 2 am	Fri 3 am	Fri 4 am	Fri 5 am	Fri 6 am	Fri 7 am	Fri 8 am	Fri 9 am	Fri 10 am	Fri 11 am	Fri 12 pm	Fri 1 pm	Fri 2 pm
Houston Pilots N - 610 Bridge	10	10	10	10	10	10	9	5.9	3.9	0.5	0.3	0.3	0.3	0.3	0.3	0.3	0.2	0.3	0.3	1.6	4.9	6.9	9	9
Houston Pilots M - Kinder 1	10	10	10	10	10	10	9	5.9	3.9	0.5	0.3	0.3	0.3	0.3	0.3	0.3	0.2	0.3	0.3	1.6	4.9	6.9	9	9
Houston Pilots L - Greens Bayou	10	10	10	10	10	10	6.9	5.9	1.1	0.5	0.3	0.3	0.3	0.3	0.3	0.3	0.2	0.3	0.1	0.3	3.9	5.9	7.9	9
Houston Pilots K - Shell Crude	10	10	10	10	10	10	6.9	5.9	1.1	0.5	0.3	0.3	0.3	0.3	0.3	0.3	0.2	0.3	0.1	0.3	3.9	4.9	7.9	9
Houston Pilots J - Lynchburg Ferries	10	10	10	10	4.9	4.9	3.9	2.9	0.5	0.3	0.3	0.3	0.3	0.3	0.3	0.3	0.2	0.3	0.1	0.3	3.9	4.9	7.9	9
Houston Pilots I - Exxon 3	10	10	1.1	1.1	0.5	0.7	0.8	0.5	0.5	0.3	0.3	0.3	0.3	0.3	0.3	0.3	0.2	0.3	0.1	0.3	2	3.9	6.9	7.9
Houston Pilots H - Morgans Point	0.7	0.5	0.7	1.1	0.5	0.7	0.8	0.5	0.5	0.3	0.3	0.3	0.3	0.3	0.3	0.3	0.2	0.3	0.1	0.3	2	3.9	6.9	6.9
Houston Pilots G - 75/76	0.5	0.5	0.7	0.5	0.5	0.5	0.5	0.5	0.5	0.3	0.3	0.3	0.3	0.3	0.3	0.3	0.2	0.3	0.1	0.3	1.1	2.9	9	9
Houston Pilots F - 63/64	0.5	0.5	0.7	0.5	0.5	0.5	0.5	0.5	0.5	0.3	0.3	0.3	0.3	0.3	0.3	0.3	0.2	0.3	0.1	0.3	1.1	2.9	8	8
Houston Pilots E - 51/52	0.5	0.5	0.5	0.5	0.5	0.5	0.5	0.5	0.5	0.3	0.3	0.3	0.3	0.3	0.3	0.3	0.2	0.3	0.1	0.3	1.6	2.9	5	5
Houston Pilots D - 37/38	0.5	0.5	0.5	0.5	0.5	0.5	0.5	0.5	0.5	0.3	0.3	0.3	0.3	0.3	0.3	0.3	0.2	0.3	0.1	0.3	1.6	2.9	4	4
Houston Pilots C - 25/26	0.5	0.5	0.5	0.5	0.5	0.5	0.5	0.5	0.5	0.3	0.3	0.3	0.3	0.3	0.3	0.3	0.2	0.3	0.1	0.3	1.6	2.9	2	2
Houston Pilots B - 11/12	0.5	0.2	0.5	0.5	0.5	0.5	0.5	0.5	0.5	0.3	0.3	0.3	0.3	0.3	0.3	0.3	0.2	0.3	0.1	0.3	1.6	2.9	0.1	0.1
Houston Pilots A - 1 & 2 Bravo	0.5	0.2	0.5	0.5	0.5	0.5	0.5	0.2	0.5	0.3	0.3	0.3	0.3	0.3	0.3	0.3	0.2	0.3	0.1	0.3	2	3.9	0.1	0.1

**NOTE:** This is automated data that may/may not agree with the official BAM thinking that’s found on the daily slides or special visibility report slides. This data should be used as a guide only

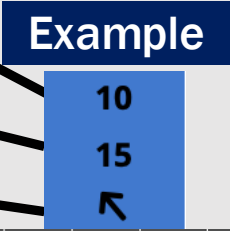
# Houston Pilots Wind Chart



Forecast Confidence



Sustained Wind 10 Knots  
Gusts 15 Knots  
Wind from the SE



Wind	Thu 3 pm	Thu 4 pm	Thu 5 pm	Thu 6 pm	Thu 7 pm	Thu 8 pm	Thu 9 pm	Thu 10 pm	Thu 11 pm	Fri 12 am	Fri 1 am	Fri 2 am	Fri 3 am	Fri 4 am	Fri 5 am	Fri 6 am	Fri 7 am	Fri 8 am	Fri 9 am	Fri 10 am	Fri 11 am	Fri 12 pm	Fri 1 pm	Fri 2 pm
Houston Pilots N - 610 Bridge	6 13 ↑	7 13 ↑	7 13 ↑	7 14 ↑	7 13 ↑	6 13 ↑	6 13 ↑	6 13 ↑	6 12 ↑	6 13 ↑	6 12 ↑	6 12 ↑	5 10 ↑	5 10 ↑	5 10 ↑	5 10 ↑	5 9 ↑	5 10 ↑	6 12 ↑	6 13 ↑	7 14 ↑	8 15 ↑	8 16 ↑	8 17 ↑
Houston Pilots M - Kinder 1	6 13 ↑	7 13 ↑	7 13 ↑	7 14 ↑	7 13 ↑	6 13 ↑	6 13 ↑	6 12 ↑	6 12 ↑	6 12 ↑	6 12 ↑	5 12 ↑	5 10 ↑	5 10 ↑	5 10 ↑	5 10 ↑	3 9 ↑	5 10 ↑	6 12 ↑	6 13 ↑	7 14 ↑	8 15 ↑	8 16 ↑	8 16 ↑
Houston Pilots L - Greens Bayou	6 13 ↑	7 13 ↑	7 13 ↑	7 14 ↑	7 13 ↑	6 13 ↑	6 13 ↑	6 12 ↑	6 12 ↑	6 12 ↑	6 12 ↑	5 10 ↑	5 10 ↑	5 10 ↑	5 10 ↑	3 10 ↑	3 9 ↑	5 10 ↑	5 12 ↑	6 13 ↑	7 13 ↑	8 14 ↑	8 16 ↑	8 16 ↑
Houston Pilots K - Shell Crude	6 13 ↑	7 13 ↑	7 13 ↑	7 13 ↑	7 13 ↑	6 13 ↑	6 13 ↑	6 12 ↑	6 10 ↑	6 12 ↑	6 12 ↑	5 10 ↑	5 10 ↑	5 10 ↑	3 10 ↑	3 9 ↑	3 9 ↑	5 10 ↑	5 10 ↑	6 13 ↑	7 13 ↑	7 14 ↑	8 15 ↑	8 16 ↑
Houston Pilots J - Lynchburg Ferries	6 13 ↑	6 13 ↑	7 14 ↑	7 14 ↑	7 13 ↑	6 13 ↑	6 12 ↑	6 12 ↑	6 10 ↑	5 10 ↑	5 10 ↑	5 10 ↑	3 9 ↑	3 9 ↑	3 9 ↑	3 9 ↑	3 9 ↑	3 10 ↑	5 10 ↑	6 12 ↑	6 13 ↑	7 14 ↑	8 15 ↑	8 16 ↑
Houston Pilots I - Exxon 3	8 14 ↑	8 14 ↑	9 15 ↑	9 14 ↑	9 14 ↑	9 14 ↑	8 13 ↑	8 13 ↑	8 13 ↑	8 13 ↑	8 12 ↑	8 12 ↑	7 10 ↑	7 10 ↑	7 10 ↑	6 10 ↑	6 10 ↑	6 10 ↑	7 12 ↑	7 13 ↑	8 13 ↑	8 14 ↑	8 15 ↑	9 16 ↑
Houston Pilots H - Morgans Point	8 14 ↑	8 14 ↑	8 14 ↑	9 14 ↑	9 14 ↑	8 14 ↑	8 13 ↑	8 13 ↑	8 12 ↑	8 12 ↑	8 12 ↑	7 12 ↑	7 10 ↑	7 10 ↑	6 10 ↑	6 10 ↑	6 9 ↑	6 10 ↑	6 12 ↑	7 12 ↑	7 12 ↑	8 13 ↑	8 15 ↑	9 16 ↑
Houston Pilots G - 75/76	7 13 ↑	8 14 ↑	8 15 ↑	9 14 ↑	9 14 ↑	9 14 ↑	8 13 ↑	8 13 ↑	8 13 ↑	8 13 ↑	8 12 ↑	8 12 ↑	8 12 ↑	8 12 ↑	7 10 ↑	7 10 ↑	7 10 ↑	7 12 ↑	7 12 ↑	8 13 ↑	8 13 ↑	8 14 ↑	8 15 ↑	8 16 ↑
Houston Pilots F - 63/64	6 13 ↑	8 14 ↑	8 14 ↑	8 14 ↑	9 14 ↑	8 13 ↑	8 13 ↑	8 12 ↑	8 12 ↑	8 12 ↑	8 12 ↑	8 12 ↑	8 10 ↑	7 10 ↑	7 10 ↑	7 10 ↑	6 10 ↑	7 10 ↑	7 12 ↑	7 13 ↑	8 13 ↑	8 13 ↑	8 15 ↑	8 16 ↑
Houston Pilots E - 51/52	6 10 ↑	7 12 ↑	7 12 ↑	8 12 ↑	8 12 ↑	8 12 ↑	7 12 ↑	7 10 ↑	7 10 ↑	8 12 ↑	8 12 ↑	7 10 ↑	7 10 ↑	7 10 ↑	7 10 ↑	6 10 ↑	6 9 ↑	6 10 ↑	6 12 ↑	7 12 ↑	7 12 ↑	8 13 ↑	8 14 ↑	8 15 ↑
Houston Pilots D - 37/38	6 10 ↑	6 12 ↑	7 12 ↑	7 10 ↑	7 10 ↑	7 10 ↑	7 10 ↑	7 10 ↑	7 10 ↑	7 12 ↑	7 12 ↑	7 10 ↑	7 10 ↑	7 10 ↑	6 10 ↑	6 10 ↑	6 9 ↑	6 10 ↑	6 12 ↑	6 12 ↑	7 12 ↑	7 13 ↑	8 14 ↑	8 15 ↑
Houston Pilots C - 25/26	6 10 ↑	6 10 ↑	6 10 ↑	6 10 ↑	7 10 ↑	6 10 ↑	6 10 ↑	6 9 ↑	6 9 ↑	7 10 ↑	7 10 ↑	7 10 ↑	7 10 ↑	7 10 ↑	6 10 ↑	6 10 ↑	6 9 ↑	6 10 ↑	6 12 ↑	6 12 ↑	7 12 ↑	7 13 ↑	8 14 ↑	8 15 ↑
Houston Pilots B - 11/12	6 9 ↑	6 10 ↑	6 9 ↑	6 9 ↑	6 9 ↑	6 9 ↑	6 9 ↑	6 9 ↑	6 9 ↑	6 10 ↑	6 10 ↑	6 10 ↑	6 10 ↑	6 10 ↑	6 10 ↑	6 10 ↑	6 9 ↑	6 10 ↑	6 12 ↑	6 12 ↑	7 12 ↑	7 13 ↑	8 13 ↑	8 14 ↑
Houston Pilots A - 1 & 2 Bravo	3 8 ↑	5 9 ↑	6 9 ↑	6 9 ↑	6 10 ↑	6 10 ↑	6 10 ↑	7 10 ↑	7 10 ↑	8 12 ↑	8 12 ↑	8 12 ↑	8 12 ↑	8 12 ↑	8 12 ↑	7 12 ↑	7 12 ↑	7 12 ↑	7 12 ↑	7 12 ↑	7 12 ↑	7 13 ↑	7 13 ↑	7 13 ↑

NOTE: This is automated data that may/may not agree with the official BAM thinking that's found on the daily slides.  
This data should be used as a guide only.

# Houston Pilots: THU. 12/25/2025

## Forecast Discussion

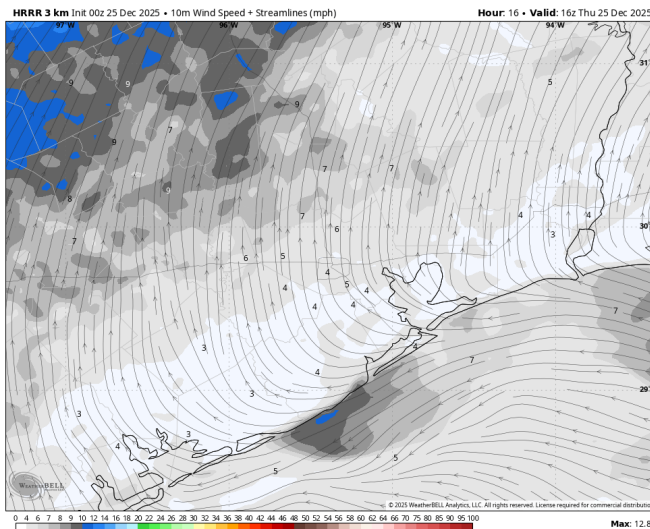
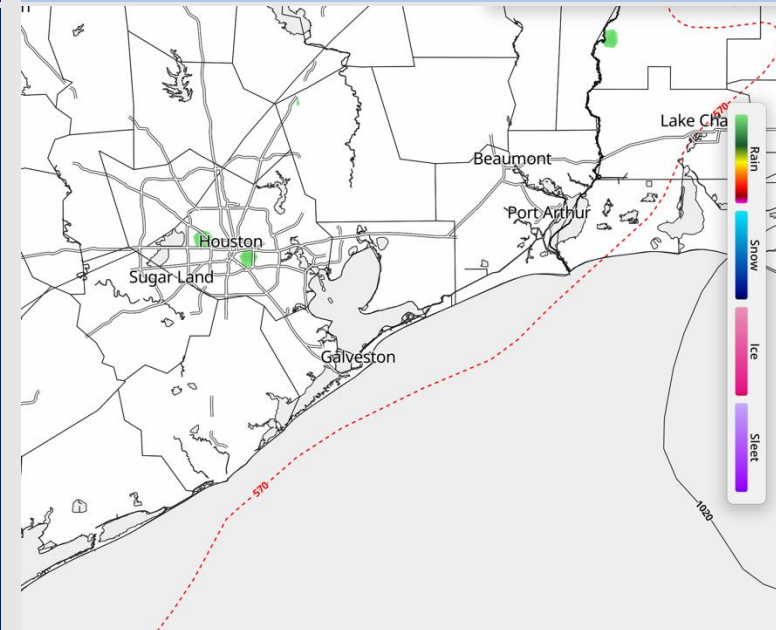
**Precip:** Dry conditions favored.

**Wind:** Winds will be out of the ESE for the remainder of the day. **N of Morgan's Point:** Winds of 3 - 8 kts. **S of Morgan's Point:** Winds of 4 - 9 kts.

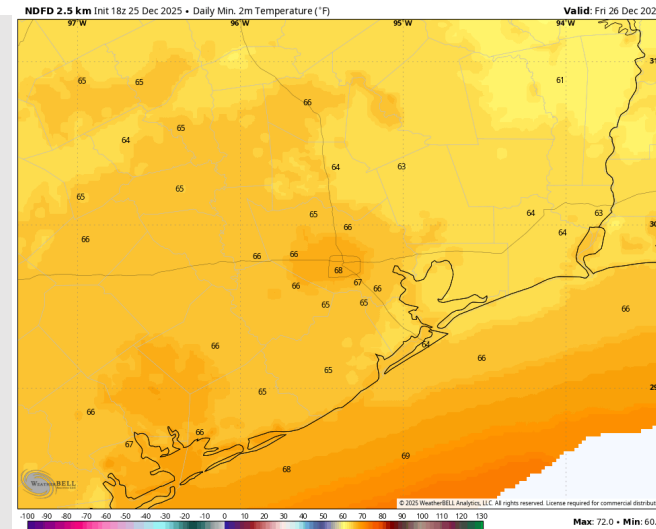
**Low Temps:** **N of Morgan's Point:** High 60 F. **S of Morgan's Point:** Mid 60s F.

**Visibility:** *More sea fog is expected on THU. Check out the visibility slides for more info.*

## Precip Image: 6 PM CT



Wind Speed:  
10 AM CT



Low Temps  
FRI AM

# Houston Pilots: FRI. 12/26/2025

## Forecast Discussion

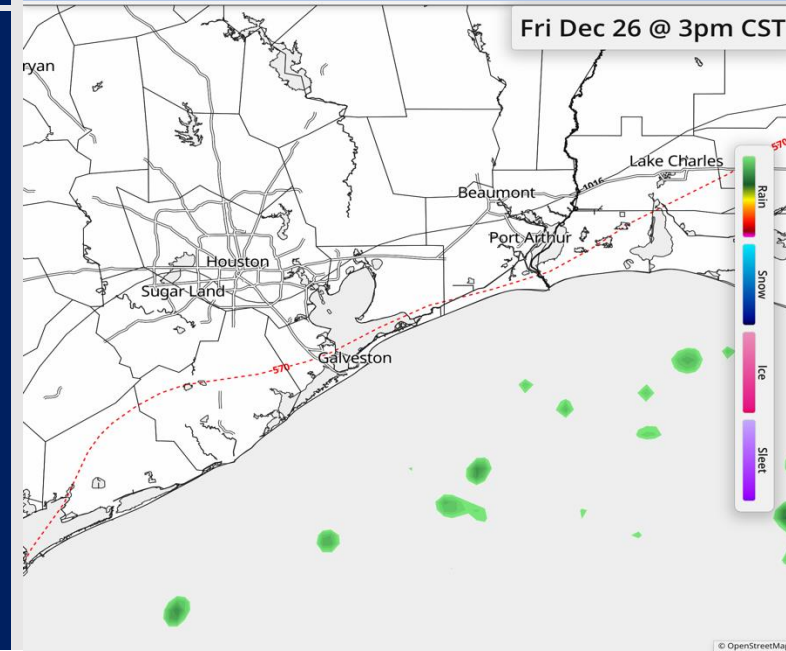
**Precip:** Dry conditions favored for all stations.

**Wind:** Winds will be out of the SW throughout the day. **N of Morgan's Point:** Winds of 3 – 8 kts through the day. **S of Morgan's Point:** Winds of 3 – 8 kts, increasing to 6 – 11 kts after 1PM.

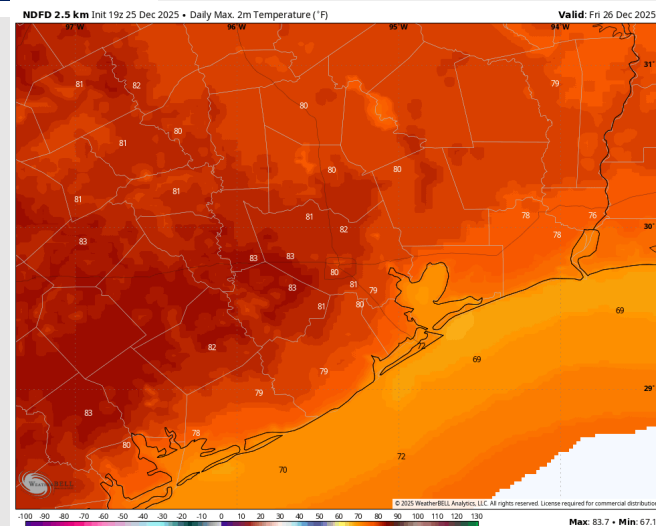
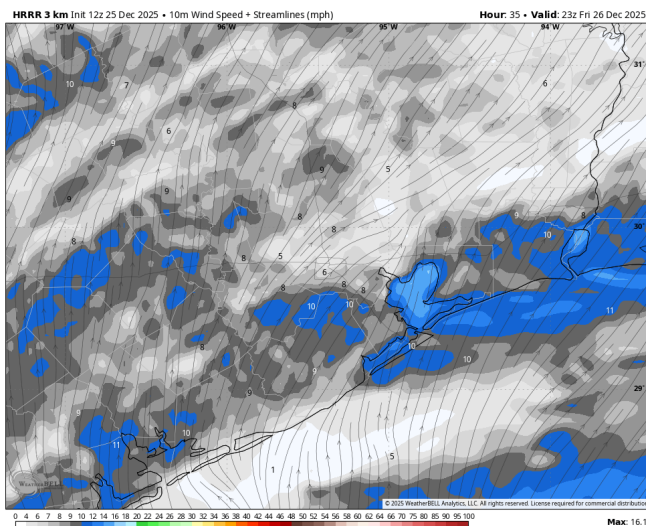
**High Temps:** **N of Morgan's Point:** Upper 70s/low 80s F. **S of Morgan's Point:** Mid 70s F.

**Visibility:** More sea fog is expected on FRI. Check out the visibility slides for more info.

## Precip Image: 3 PM CT



**Wind Speed:**  
5 PM CT



**High Temps**  
**Friday**



# Houston Pilots: SAT. 12/27/2025

## Forecast Discussion

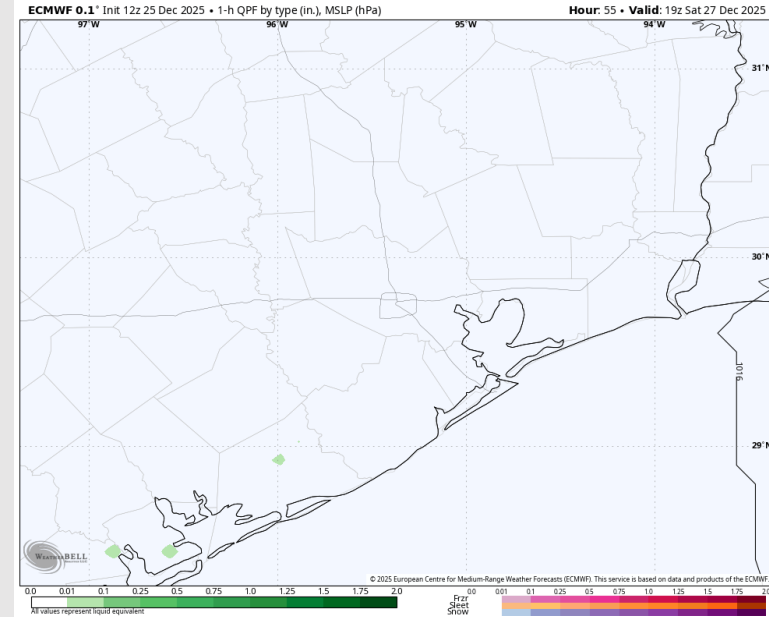
**Precip:** Dry conditions favored.

**Wind:** Winds will be generally out of the S/SW. **N of Morgan's Point:** Winds of 4 – 9 kts. **S of Morgan's Point:** Winds will be at 6 – 11 kts. **Occasional gusts up to 20 kts will be possible from 12PM to 6PM N of Morgan's Point.**

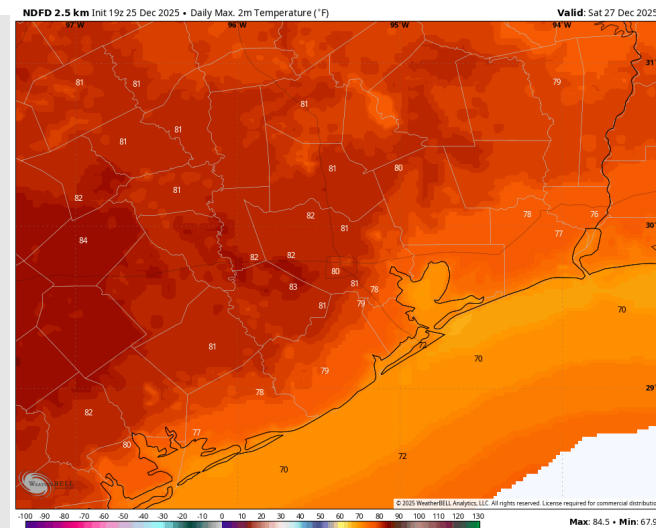
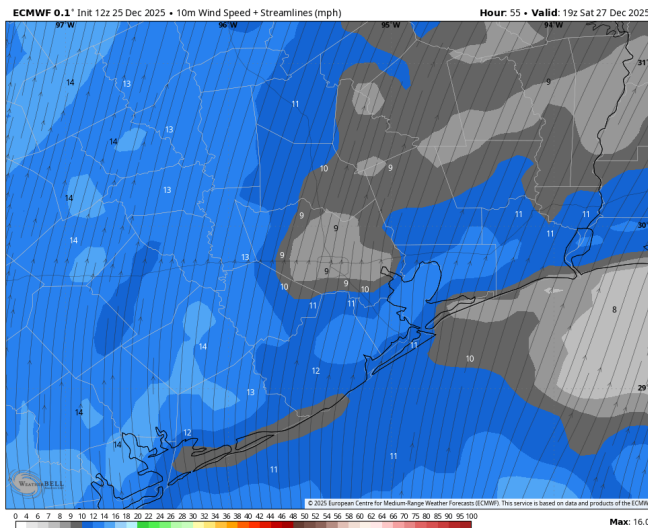
**High Temps:** **N of Morgan's Point:** Upper 70s/lower 80s F. **S of Morgan's Point:** Mid 70s F.

**Visibility:** Isolated to patchy instances of fog possible on Saturday. Confidence lower than normal due to warming water temperatures and gustier winds.

## Precip Image: 1 PM CT



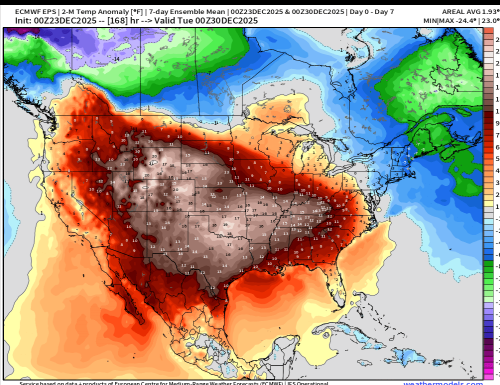
**Wind Speed:**  
**1 PM CT**



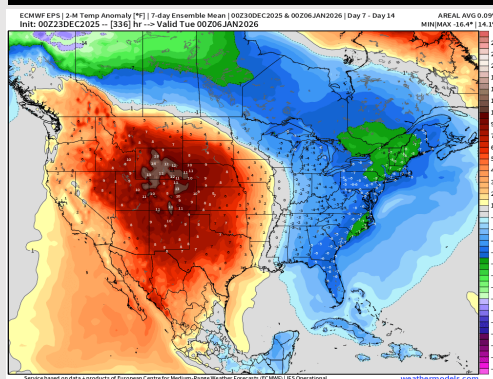
**High Temps**  
**Saturday**

# Houston Pilots: 12/26/2025

## Next 7 Day Temperature Departure

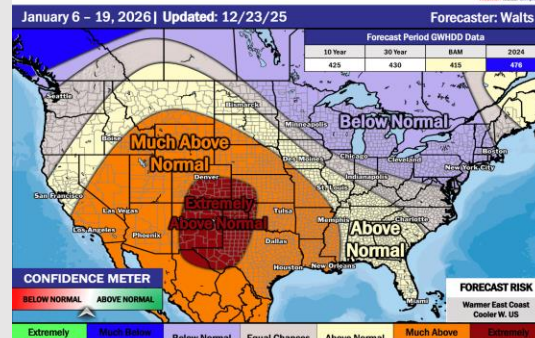


## 8-14 Day Temperature Departure

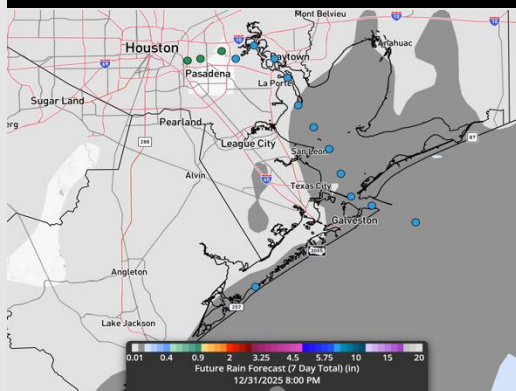


## 15-30 Day Temperature Departure

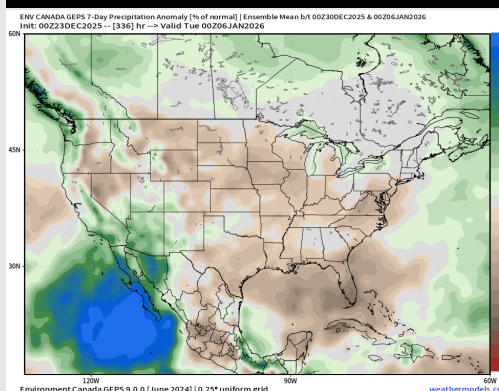
### Week ¾ Temperature Outlook



## Next 7 Day Total Precipitation

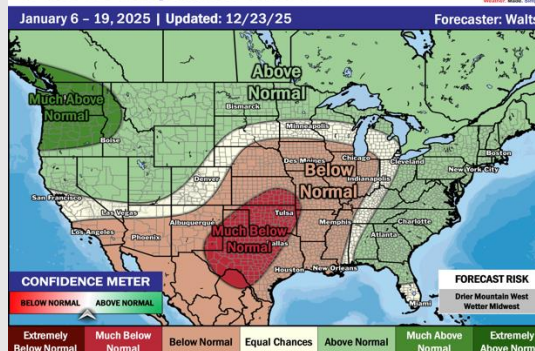


## 8-14 Day % of Average Precip.



## 15-30 Day % of Average Precip.

### Week ¾ Precipitation Outlook



- Much above normal temps are favored over the next 7 days, with only minimal/isolated rain chances over the next 7 days.
- Above normal temperatures and below normal rainfall favored in the Week 2 timeframe.
- Much above normal temperatures and below normal rainfall expected the first part of January.