

Houston Pilots Forecast Package



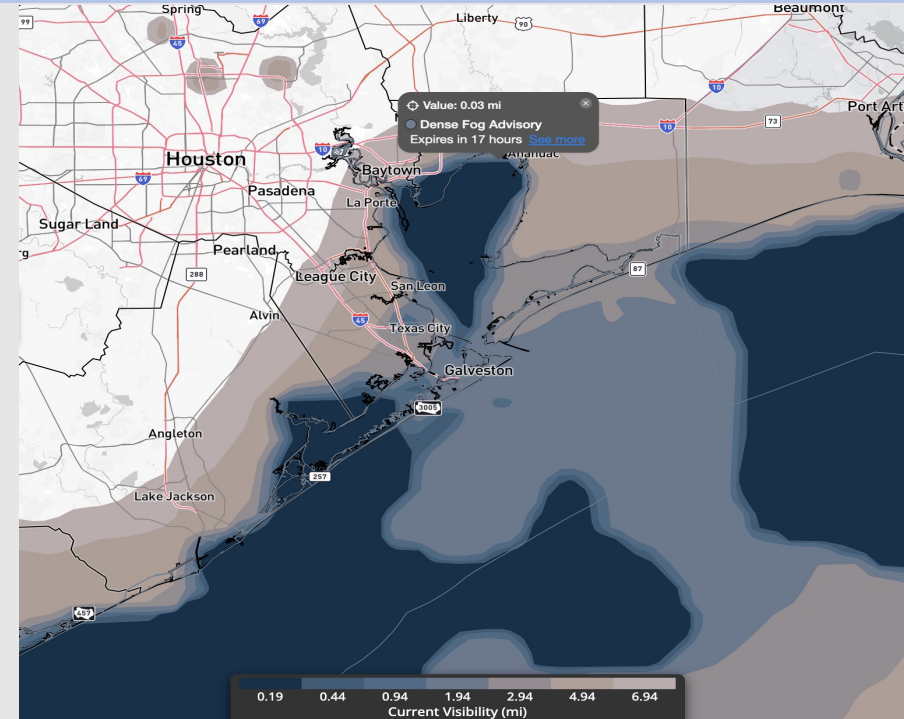
Updated: 7:15 PM CT

Monday, December 22, 2025

Forecaster: John Kemper

Weather Headlines

- Now favoring dry conditions for remainder of evening.
- A multi-day sea fog event remains in the forecast through at least Thursday with high confidence.
- Fog is expected to gradually increase in converge for all stations, expanding N of Morgan's Point after ~9 PM tonight.



Current Visibility: 7:00 PM ET

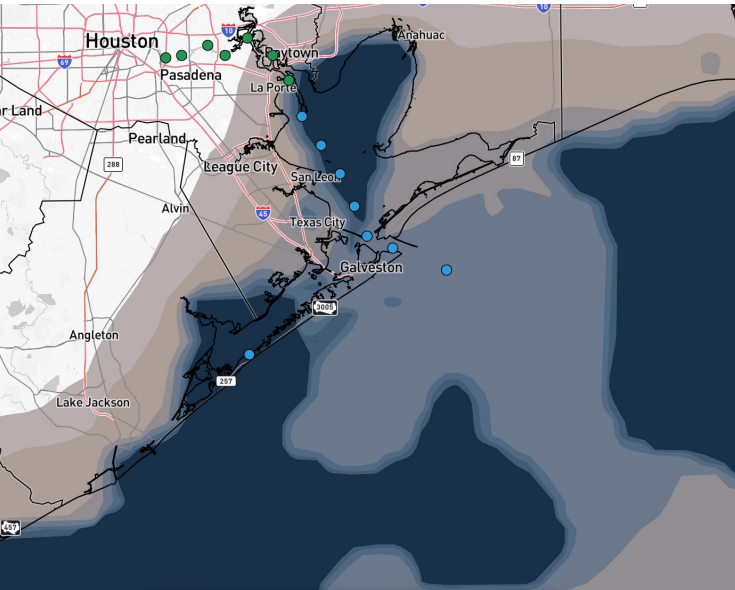
As always, please do not hesitate to reach out to us with any forecast questions at (317)-560-8122. Press 1 for forecast questions.



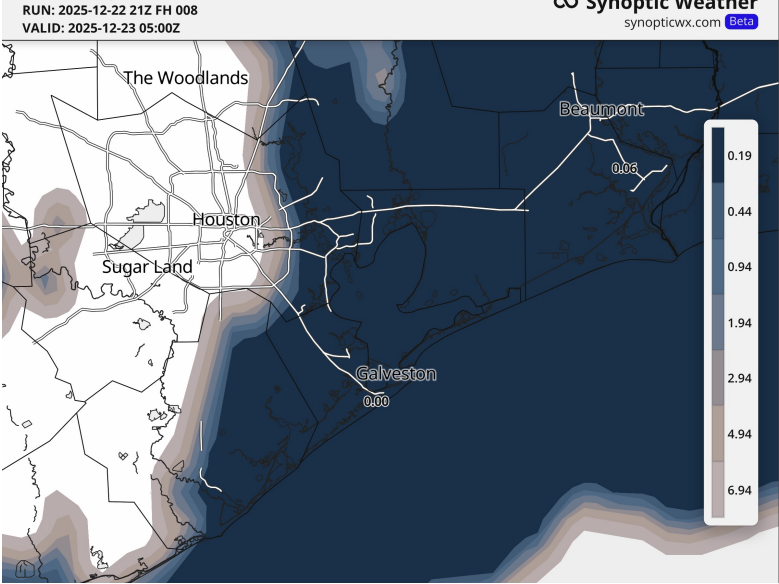
You can also access real-time forecast updates and 24/7 meteorological chat assistance on your [Clarity](#) app.

Houston Pilots Visibility Report

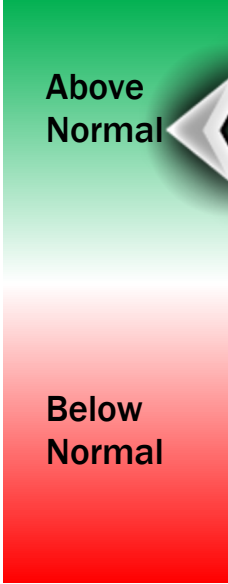
CURRENT VISIBILITY (7 PM CST)



11 PM CT MON VISIBILITY



Confidence



TIMEFRAME DISCUSSED

NOW – 12 AM TUE

THREAT

HIGH

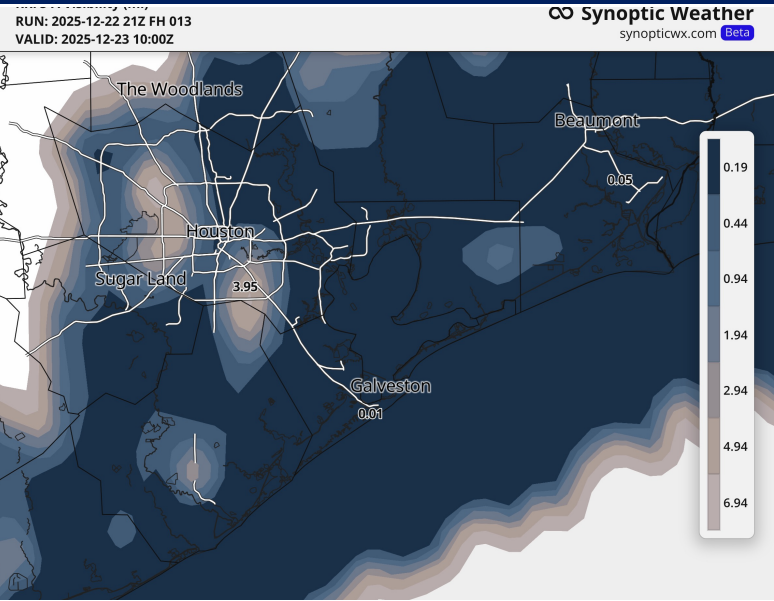
Sea fog is expected to once again become more widespread and extend northward to include all stations **N of Morgan's Point** by 10PM. Compared to yesterday, winds are a bit stronger, and we believe fog can reach Kinder 1 and the 610 Bridge.

For **stations S of Morgan's Point**, visibilities of less than 0.5 mile will be favored given orientation of winds and intensity. Visibilities of less than 1 mile favored for **Stations N of Morgan's Point**.

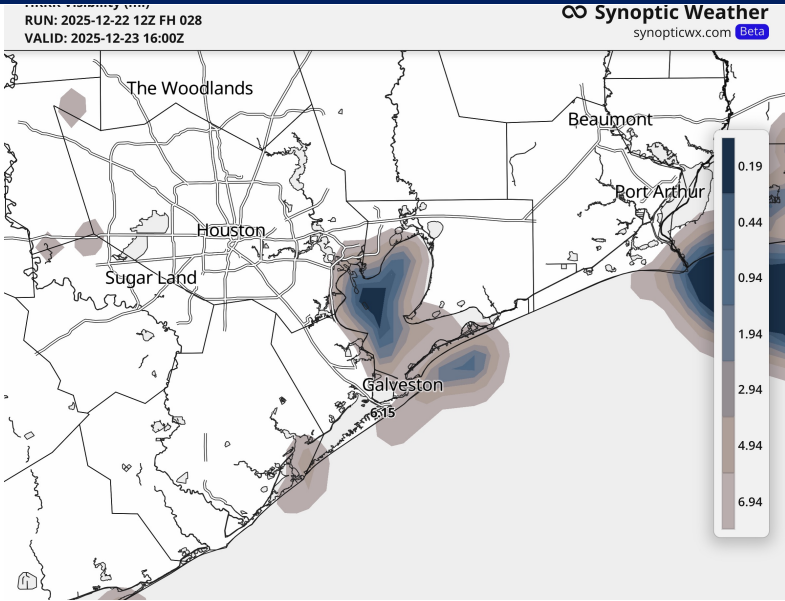
Confidence higher in timing of this event overall, with moderate confidence in reduction of visibilities for each prospective area of the bay.

Houston Pilots Visibility Report

4 AM CT MON VISIBILITY



10 AM CT TUE VISIBILITY



Confidence

Above
Normal

Below
Normal

TIMEFRAME
DISCUSSED

THREAT

12 AM – 12 PM TUE

HIGH

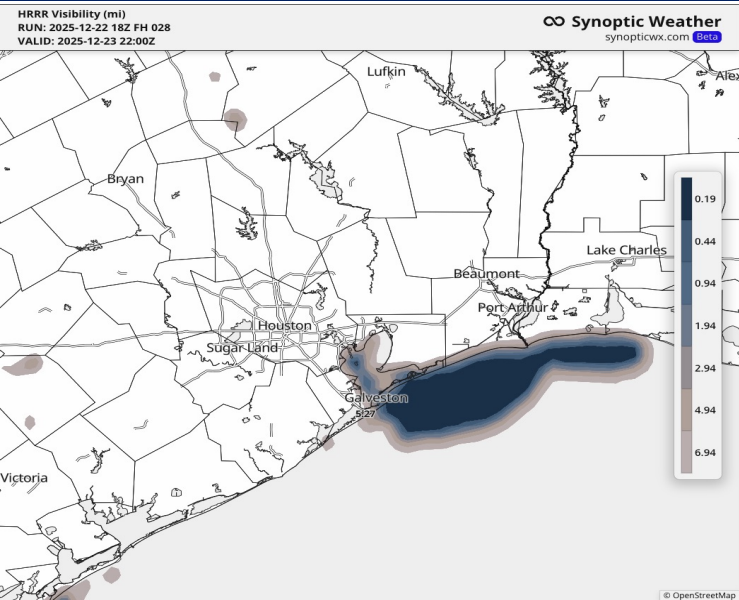
Widespread, dense fog with visibilities of less than 0.5 miles should continue for **all stations** through 6AM-CT. Low end risk for fog **N of Morgan's Point** to become patchier as we get closer to 4AM-CT.

Towards ~6 AM TUE, there is lower confidence on fog receding for locations **N of Morgan's Point**. At the very least, we expect at this point fog to become patchier for these locations, with visibility of less than 1 mile possible.

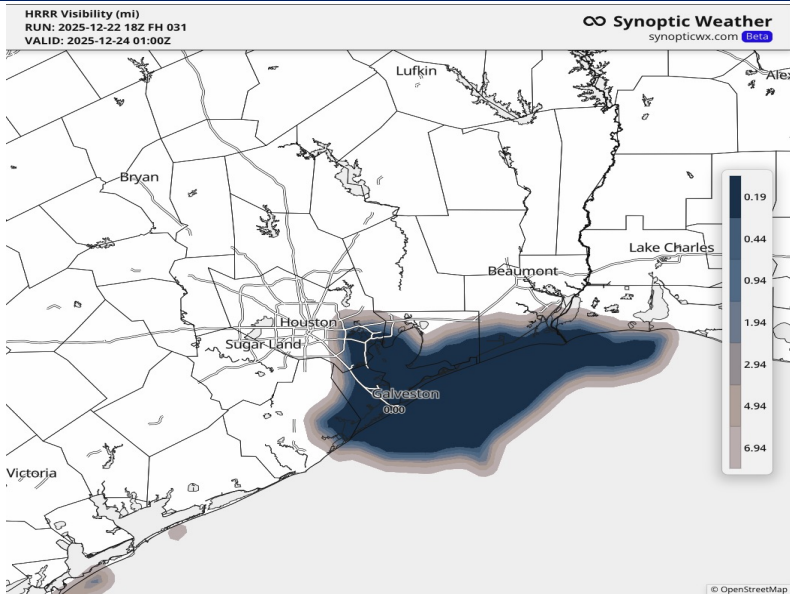
Coverage of dense fog (less than 0.5 mile visibilities) is expected to remain more persistent **S of Morgan's Point** through ~9 AM TUE before becoming patchier in nature through ~12 PM. By 9AM, fog should be fully out of the area for stations **N of Morgan's Point**.

Houston Pilots Visibility Report

4 PM CT TUE VISIBILITY



7 PM CT TUE VISIBILITY



Confidence

Above
Normal

Below
Normal

TIMEFRAME
DISCUSSED

THREAT

12 PM – 9 PM TUE

MED - HIGH

After 12 PM, coverage of fog **S of Morgan's Point** is expected to become rather isolated throughout the afternoon hours with only localized reduced visibilities of ~1 mile.

Towards 4 PM TUE, more patchy/persistent fog will slowly work back towards the **Boarding Station**, gradually expanding across the bay through ~9 PM TUE.

Stations S of Morgan's Point will be able to see localized reduced visibilities of 0.5 miles or less after 9 PM TUE with fog expected to hold off N of Morgan's Point until after 9 PM.

Fog is still expected to fill in across **Stations N of Morgan's Point** after 9 PM and into WED AM.

Houston Pilots Extended Range Visibility Report



Thursday 12/25/2025

Sea fog will be probable for all stations through at least 9AM before being confined to S of Morgan’s Point into the late AM/PM hours THU.

Forecast Confidence



Saturday 12/27/2025

No fog concerns favored at this time.

Forecast Confidence



Friday 12/26/2025

Lower confidence on timing of a front passing through, but currently think at least isolated fog can be possible early FRI AM before front passes and ends fog risks.

Forecast Confidence



Chance for Fog

Thursday AM	Probable
Thursday PM	Probable
Friday AM	Possible
Friday PM	Unlikely
Saturday AM	Unlikely
Saturday PM	Unlikely

Houston Pilots Visibility Chart (miles)



Visibility	Mon 4 pm	Mon 5 pm	Mon 6 pm	Mon 7 pm	Mon 8 pm	Mon 9 pm	Mon 10 pm	Mon 11 pm	Tue 12 am	Tue 1 am	Tue 2 am	Tue 3 am	Tue 4 am	Tue 5 am	Tue 6 am	Tue 7 am	Tue 8 am	Tue 9 am	Tue 10 am	Tue 11 am	Tue 12 pm	Tue 1 pm	Tue 2 pm	Tue 3 pm
Houston Pilots N - 610 Bridge	10	10	10	10	10	0.5	0.5	0.5	0.3	0.3	0.3	0.3	0.3	0.5	0.5	0.7	0.5	0.3	4.9	6.9	10	10	10	10
Houston Pilots M - Kinder 1	10	10	10	10	2	0.5	0.5	0.5	0.3	0.3	0.3	0.3	0.3	0.3	0.5	0.7	0.5	0.3	4.9	6.9	10	10	10	10
Houston Pilots L - Greens Bayou	10	10	10	0.8	0.5	0.5	0.5	0.5	0.3	0.3	0.3	0.3	0.3	0.3	0.5	0.7	0.5	0.3	4.9	6.9	10	10	10	10
Houston Pilots K - Shell Crude	10	10	10	0.8	0.5	0.5	0.5	0.3	0.3	0.3	0.3	0.3	0.3	0.3	0.2	0.5	0.5	0.3	4.9	6.9	10	10	10	10
Houston Pilots J - Lynchburg Ferries	10	10	6.9	0.8	0.5	0.5	0.5	0.3	0.3	0.3	0.3	0.3	0.3	0.3	0.2	0.5	0.3	0.3	0.8	4.9	7.9	10	10	10
Houston Pilots I - Exxon 3	10	10	2.5	0.8	0.5	0.5	0.5	0.3	0.3	0.3	0.3	0.3	0.3	0.3	0.2	0.2	0.3	0.3	1.1	4.9	7.9	10	10	10
Houston Pilots H - Morgans Point	6.9	6.9	2.5	0.8	0.5	0.5	0.5	0.3	0.3	0.3	0.3	0.3	0.3	0.3	0.2	0.2	0.3	0.1	0.3	3.9	6.9	10	10	10
Houston Pilots G - 75/76	1.5	1.6	2	1.6	1.1	1.1	0.5	0.5	0.3	0.3	0.3	0.3	0.3	0.3	0.2	0.2	0.3	0.1	0.3	3.9	4.9	6.9	9	10
Houston Pilots F - 63/64	1.5	1.6	2	1.6	1.1	1.1	0.5	0.5	0.3	0.3	0.3	0.3	0.3	0.3	0.2	0.2	0.3	0.1	0.3	3.9	4.9	6.9	9	9
Houston Pilots E - 51/52	1.5	1.6	1.6	1.1	0.8	0.8	0.5	0.5	0.3	0.3	0.3	0.3	0.3	0.3	0.2	0.2	0.3	0.1	0.3	2.9	4.9	6.9	9	6
Houston Pilots D - 37/38	1.5	1.1	1.6	1.1	0.8	0.8	0.5	0.5	0.3	0.3	0.3	0.3	0.3	0.5	0.2	0.2	0.3	0.1	0.3	2.9	4.9	6.9	8	4
Houston Pilots C - 25/26	1.5	1.1	1.1	0.8	0.8	0.5	0.5	0.5	0.3	0.3	0.3	0.3	0.3	0.5	0.2	0.2	0.3	0.1	1.1	3.9	4.9	5.9	7	1.6
Houston Pilots B - 11/12	1.5	1.1	0.8	0.5	0.5	0.5	0.5	0.5	0.3	0.3	0.3	0.3	0.3	0.5	0.2	0.2	0.3	0.1	0.3	2.9	4.9	5.9	5	0.1
Houston Pilots A - 1 & 2 Bravo	1.5	1.1	1.1	0.8	0.8	0.8	0.5	0.5	0.3	0.3	0.3	2	2	2	0.5	0.7	0.5	0.3	2	3.9	4.9	5.9	1.2	0.1

NOTE: This is automated data that may/may not agree with the official BAM thinking that's found on the daily slides or special visibility report slides. This data should be used as a guide only

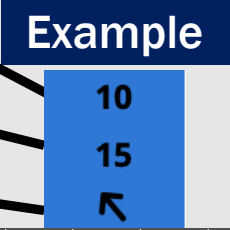
Houston Pilots Wind Chart



Forecast Confidence



Sustained Wind 10 Knots
Gusts 15 Knots
Wind from the SE



Wind	Mon 4 pm	Mon 5 pm	Mon 6 pm	Mon 7 pm	Mon 8 pm	Mon 9 pm	Mon 10 pm	Mon 11 pm	Tue 12 am	Tue 1 am	Tue 2 am	Tue 3 am	Tue 4 am	Tue 5 am	Tue 6 am	Tue 7 am	Tue 8 am	Tue 9 am	Tue 10 am	Tue 11 am	Tue 12 pm	Tue 1 pm	Tue 2 pm	Tue 3 pm
Houston Pilots N - 610 Bridge	8 15 ↖	8 15 ↖	8 15 ↖	8 15 ↖	7 14 ↖	7 14 ↖	6 14 ↖	6 14 ↖	6 14 ↖	6 13 ↖	6 13 ↖	6 12 ↖	5 10 ↖	5 9 ↖	3 9 ↖	3 9 ↖	3 9 ↖	3 9 ↖	5 10 ↖	6 10 ↖	6 13 ↖	6 13 ↖	6 14 ↖	7 14 ↖
Houston Pilots M - Kinder 1	8 15 ↖	8 15 ↖	8 15 ↖	8 15 ↖	7 14 ↖	7 14 ↖	6 14 ↖	6 14 ↖	6 14 ↖	6 13 ↖	6 13 ↖	6 12 ↖	5 10 ↖	5 9 ↖	3 9 ↖	3 8 ↖	3 9 ↖	3 9 ↖	5 10 ↖	6 10 ↖	6 13 ↖	6 13 ↖	6 13 ↖	7 14 ↖
Houston Pilots L - Greens Bayou	8 15 ↖	8 15 ↖	8 15 ↖	8 14 ↖	7 14 ↖	6 14 ↖	6 14 ↖	6 14 ↖	6 14 ↖	6 13 ↖	6 13 ↖	6 12 ↖	5 10 ↖	3 9 ↖	3 9 ↖	3 8 ↖	3 8 ↖	3 9 ↖	5 9 ↖	6 10 ↖	6 12 ↖	6 13 ↖	6 13 ↖	7 14 ↖
Houston Pilots K - Shell Crude	8 15 ↖	8 15 ↖	8 15 ↖	8 14 ↖	7 14 ↖	6 14 ↖	6 13 ↖	6 13 ↖	6 13 ↖	6 13 ↖	6 13 ↖	5 12 ↖	5 10 ↖	3 9 ↖	3 9 ↖	3 8 ↖	3 8 ↖	3 9 ↖	5 9 ↖	6 10 ↖	6 12 ↖	6 13 ↖	6 13 ↖	7 14 ↖
Houston Pilots J - Lynchburg Ferries	8 15 ↖	8 15 ↖	8 15 ↖	7 14 ↖	7 14 ↖	6 14 ↖	6 13 ↖	6 13 ↖	6 13 ↖	6 13 ↖	6 12 ↖	5 10 ↖	5 10 ↖	3 9 ↖	3 9 ↖	3 8 ↖	3 8 ↖	3 8 ↖	3 9 ↖	6 10 ↖	6 12 ↖	6 12 ↖	6 13 ↖	6 14 ↖
Houston Pilots I - Exxon 3	9 15 ↖	10 15 ↖	10 15 ↖	10 15 ↖	10 15 ↖	9 15 ↖	9 14 ↖	9 15 ↖	9 15 ↖	9 14 ↖	9 14 ↖	8 13 ↖	8 12 ↖	7 10 ↖	6 9 ↖	6 9 ↖	6 9 ↖	6 9 ↖	6 10 ↖	6 10 ↖	7 13 ↖	7 13 ↖	8 14 ↖	8 15 ↖
Houston Pilots H - Morgans Point	9 15 ↖	9 15 ↖	9 15 ↖	9 15 ↖	9 14 ↖	9 14 ↖	8 14 ↖	8 14 ↖	8 14 ↖	8 14 ↖	8 13 ↖	8 12 ↖	8 12 ↖	7 10 ↖	6 9 ↖	6 9 ↖	6 9 ↖	6 9 ↖	6 10 ↖	6 10 ↖	7 12 ↖	7 13 ↖	8 14 ↖	8 14 ↖
Houston Pilots G - 75/76	8 15 ↖	9 15 ↖	10 15 ↖	10 15 ↖	10 15 ↖	10 15 ↖	10 15 ↖	9 15 ↖	10 15 ↖	10 15 ↖	9 14 ↖	9 13 ↖	8 13 ↖	8 12 ↖	7 10 ↖	6 9 ↖	6 9 ↖	6 9 ↖	6 10 ↖	6 10 ↖	7 13 ↖	7 13 ↖	7 13 ↖	7 14 ↖
Houston Pilots F - 63/64	8 15 ↖	8 14 ↖	9 15 ↖	9 14 ↖	9 14 ↖	9 14 ↖	9 14 ↖	9 14 ↖	9 14 ↖	9 14 ↖	9 14 ↖	8 13 ↖	8 13 ↖	8 12 ↖	7 10 ↖	6 9 ↖	6 9 ↖	6 9 ↖	6 10 ↖	6 10 ↖	7 13 ↖	7 13 ↖	7 13 ↖	7 14 ↖
Houston Pilots E - 51/52	7 14 ↖	8 13 ↖	8 14 ↖	8 13 ↖	8 13 ↖	8 13 ↖	8 13 ↖	8 13 ↖	8 14 ↖	9 14 ↖	8 13 ↖	8 12 ↖	8 12 ↖	8 10 ↖	7 10 ↖	6 9 ↖	6 9 ↖	6 9 ↖	6 10 ↖	6 10 ↖	7 13 ↖	7 13 ↖	7 13 ↖	7 13 ↖
Houston Pilots D - 37/38	7 13 ↖	7 13 ↖	8 13 ↖	8 13 ↖	8 12 ↖	8 12 ↖	8 13 ↖	8 13 ↖	8 13 ↖	8 13 ↖	8 13 ↖	8 12 ↖	8 12 ↖	7 10 ↖	7 10 ↖	6 9 ↖	6 9 ↖	6 9 ↖	6 10 ↖	6 10 ↖	7 13 ↖	7 12 ↖	7 12 ↖	7 13 ↖
Houston Pilots C - 25/26	7 13 ↖	7 13 ↖	7 12 ↖	7 12 ↖	8 12 ↖	8 12 ↖	8 12 ↖	8 13 ↖	8 13 ↖	8 13 ↖	8 13 ↖	8 12 ↖	8 12 ↖	7 10 ↖	7 10 ↖	6 9 ↖	6 9 ↖	6 9 ↖	6 10 ↖	6 10 ↖	7 13 ↖	7 12 ↖	7 12 ↖	7 13 ↖
Houston Pilots B - 11/12	6 12 ↖	6 12 ↖	6 12 ↖	6 12 ↖	6 10 ↖	7 12 ↖	7 12 ↖	7 12 ↖	7 13 ↖	8 12 ↖	7 12 ↖	7 12 ↖	7 12 ↖	7 10 ↖	6 10 ↖	6 9 ↖	6 9 ↖	6 9 ↖	6 10 ↖	6 10 ↖	7 12 ↖	7 12 ↖	7 12 ↖	7 13 ↖
Houston Pilots A - 1 & 2 Bravo	6 12 ↖	6 12 ↖	7 12 ↖	8 13 ↖	8 12 ↖	8 13 ↖	8 13 ↖	8 14 ↖	9 14 ↖	9 14 ↖	9 14 ↖	9 13 ↖	8 13 ↖	8 12 ↖	8 12 ↖	8 12 ↖	7 10 ↖	7 10 ↖	7 12 ↖	7 12 ↖	7 13 ↖	7 13 ↖	6 13 ↖	6 13 ↖

NOTE: This is automated data that may/may not agree with the official BAM thinking that's found on the daily slides.
This data should be used as a guide only.

Houston Pilots: MON. 12/22/2025

Forecast Discussion

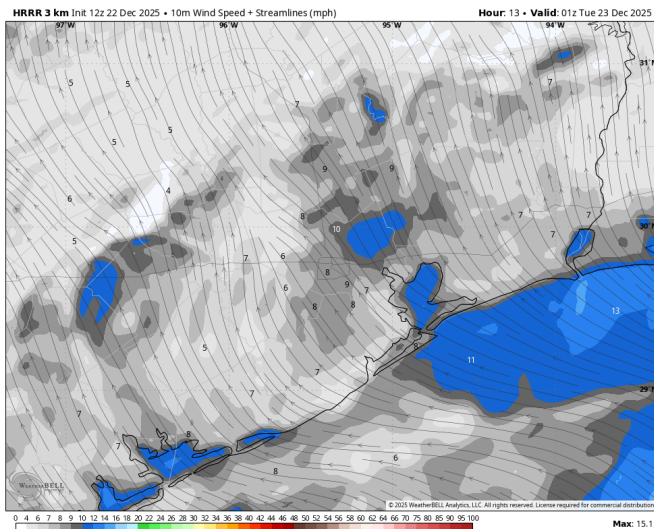
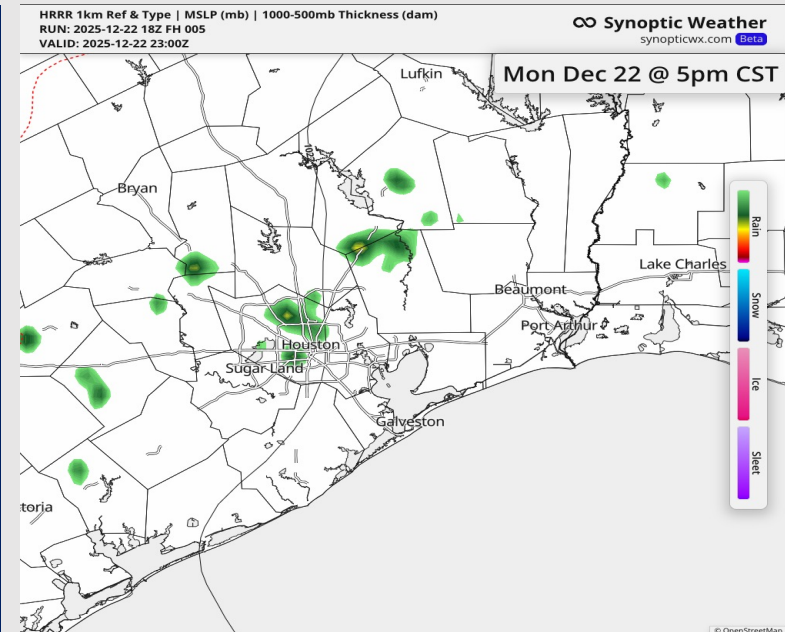
Precip: Favoring dry conditions for remainder of evening.

Wind: Winds will continue to be out of the ESE throughout the remainder of the day. **N of Morgan's Point:** Winds of 4 - 8 kts. **S of Morgan's Point:** Winds of 5 - 10 kts.

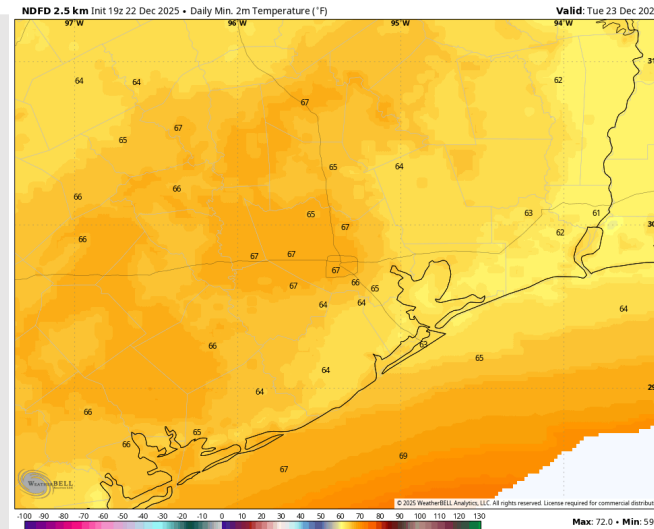
Low Temps: **N of Morgan's Point:** Mid 60s F. **S of Morgan's Point:** Low 60s F.

Visibility: Dense sea fog in play S of Morgan's Point the remainder of the day, gradually increasing in coverage to N of Morgan's Point. See visibility slide for additional information.

Precip Image: 5 PM CT



Wind Speed:
7 PM CT



Low Temps
TUE AM

Houston Pilots: TUE. 12/23/2025

Forecast Discussion

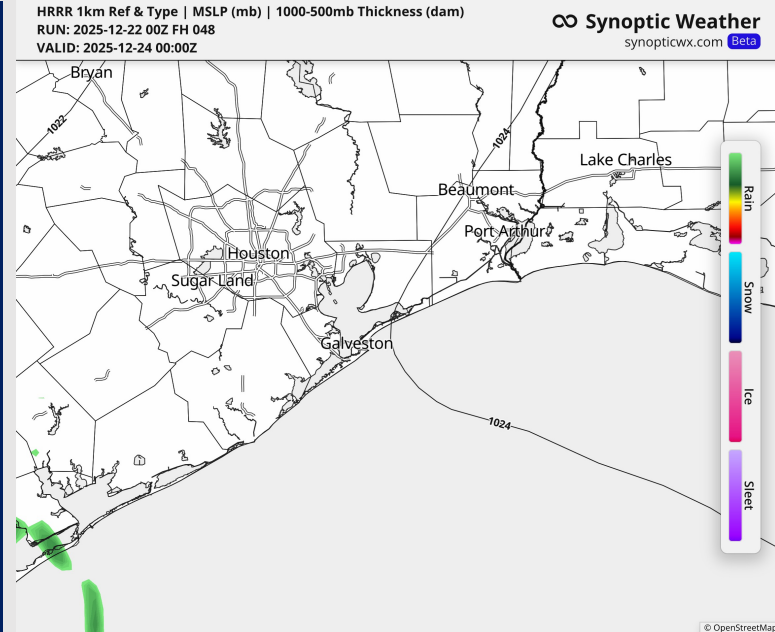
Precip: Dry conditions favored for all stations.

Wind: Winds out of the SE through the day, with a couple “wobbles” to out of the ESE between 12 PM – 9 PM . **N of Morgan’s Point:** Winds of 3 – 6 kts through the day. **S of Morgan’s Point:** Winds of 6 – 10 kts through the day.

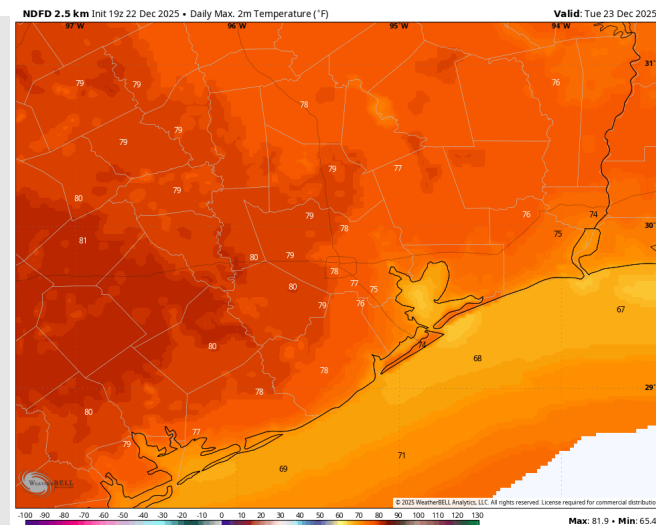
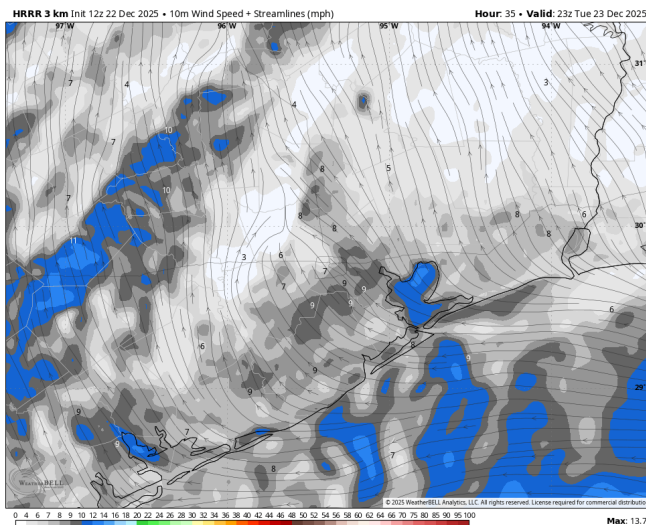
High Temps: **N of Morgan’s Point:** Mid/Upper 70s F. **S of Morgan’s Point:** Low 70s F.

Visibility: Dense fog N of Morgan’s Point in the mornings and evenings, with sea fog possible S of Morgan’s Point through the day. See visibility slides for details!

Precip Image: 6 PM CT



Wind Speed:
5 PM CT



High Temps
TUE

Houston Pilots: WED. 12/24/2025

Forecast Discussion

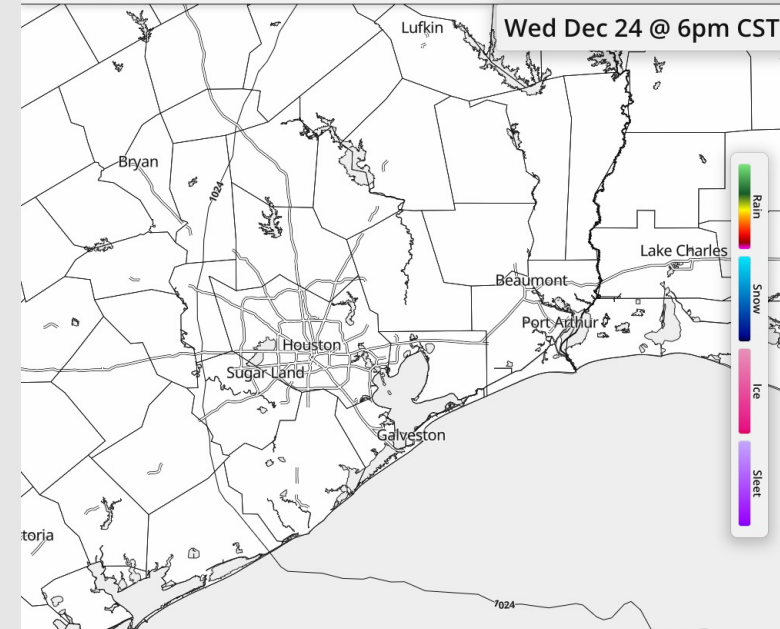
Precip: Favoring dry conditions for all stations Wednesday.

Wind: Winds will be out of the SE for the entire day. **N of Morgan's Point:** Winds of 3 - 6 kts through the day. **S of Morgan's Point:** Winds of 5 - 10 kts through 10 AM before decreasing to 3-7 kts the remainder of the day.

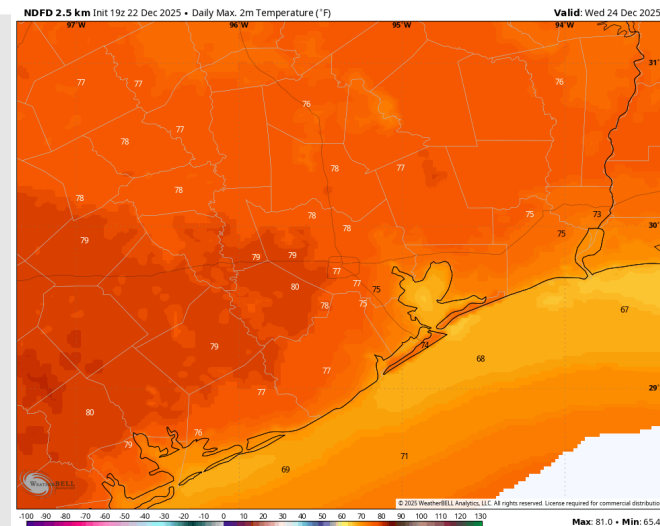
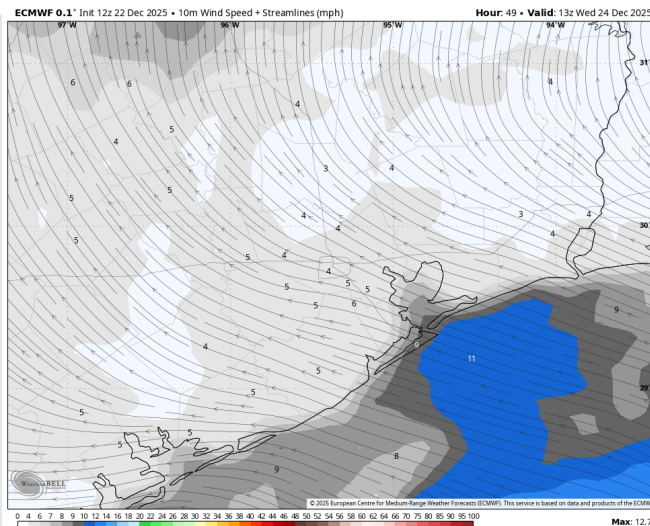
High Temps: **N of Morgan's Point:** Mid 70s F. **S of Morgan's Point:** Upper 60s F.

Visibility: Fog will be possible for all Stations through 12PM, with fog lingering S of Morgan's Point into the afternoon/evening.

Precip Image: 6 PM CT



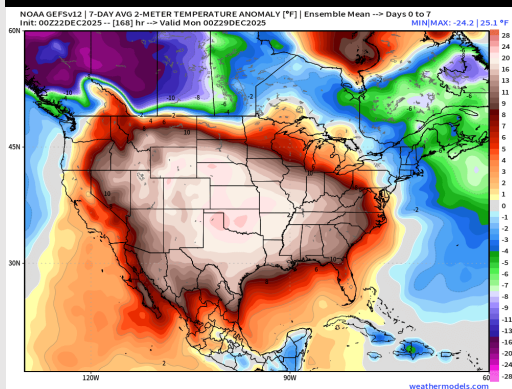
Wind Speed:
7 AM CT



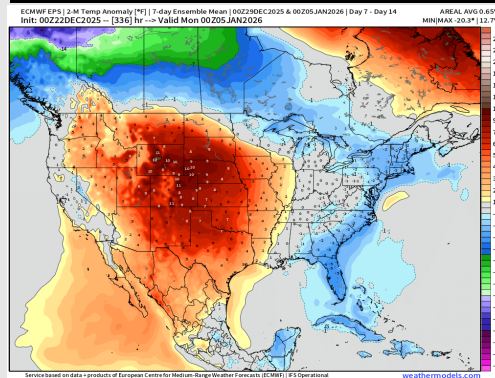
High Temps
WED

Houston Pilots: 12/22/25

Next 7 Day Temperature Departure

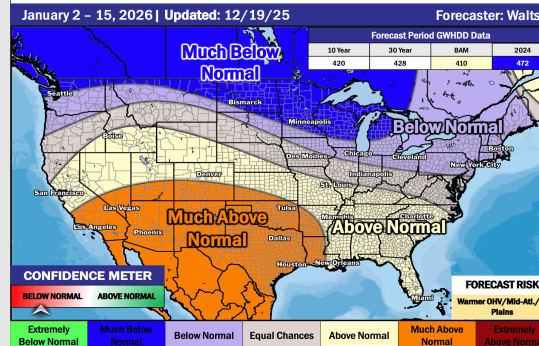


8-14 Day Temperature Departure

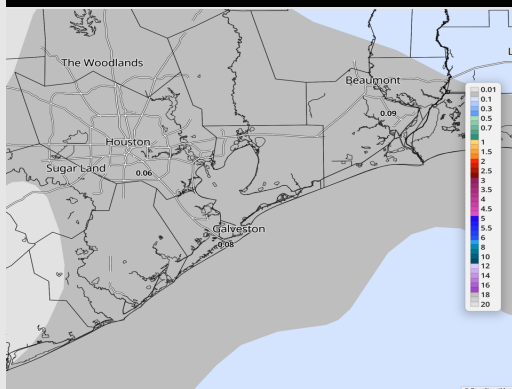


15-30 Day Temperature Departure

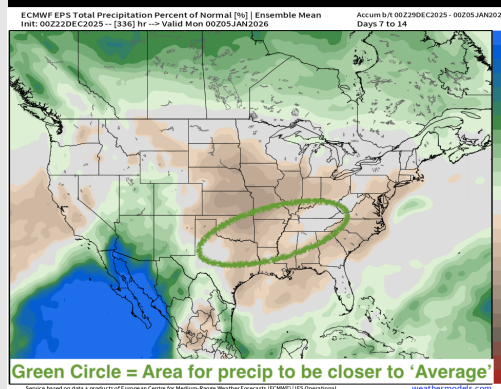
Week 3/4 Temperature Outlook



Next 7 Day Total Precipitation

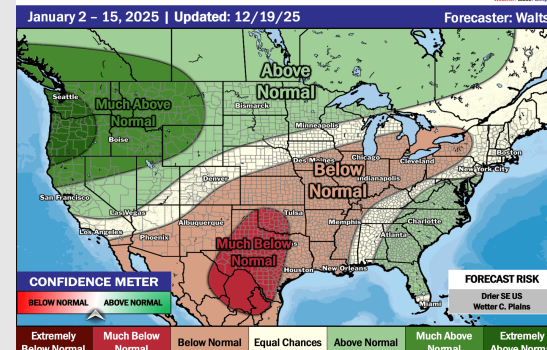


8-14 Day % of Average Precip.



15-30 Day % of Average Precip.

Week 3/4 Precipitation Outlook



- Much above normal temps are favored over the next 7 days, with isolated rain chances through the week.
- Above normal temperatures and below normal rainfall favored in the Week 2 timeframe.
- Much above normal temperatures and below normal rainfall expected the first part of January.