

Houston Pilots Forecast Package



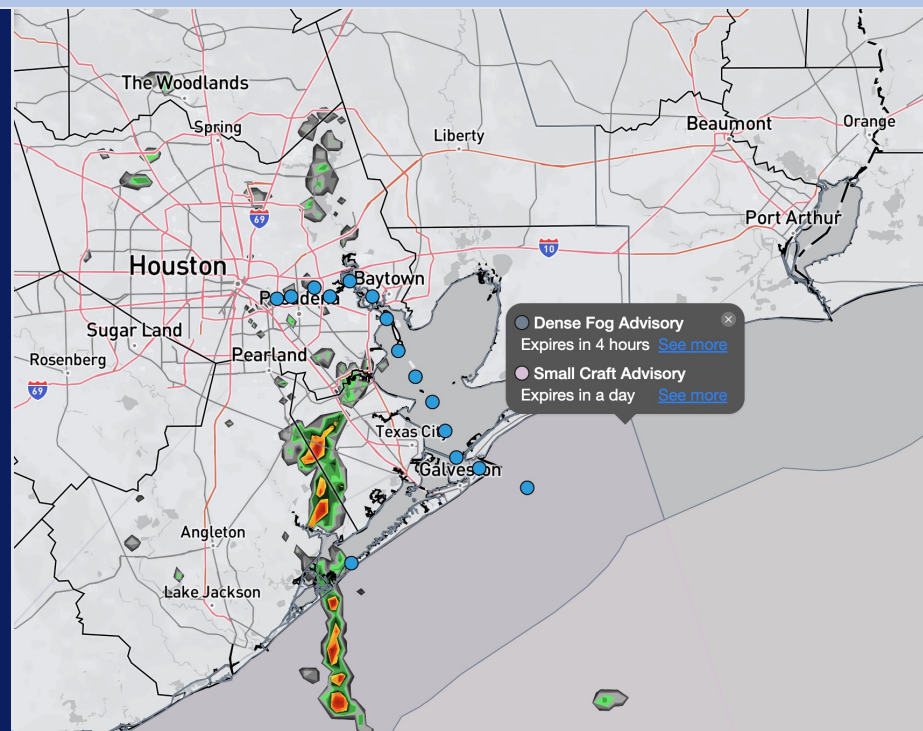
Updated: 5:30 AM CT

Thursday, December 18, 2025

Forecaster: Kleitsch/Lang

Weather Headlines

- **Fog will continue to be possible through THU ~3PM.**
- **Wind gusts up to 30 kts will be possible Thursday PM to Friday AM.**
- **Another round of sea fog is anticipated this weekend into early next week.**



Current Radar: 5:30 AM CT

As always, please do not hesitate to reach out to us with any forecast questions at **(317)-560-8122**. **Press 1 for forecast questions.**



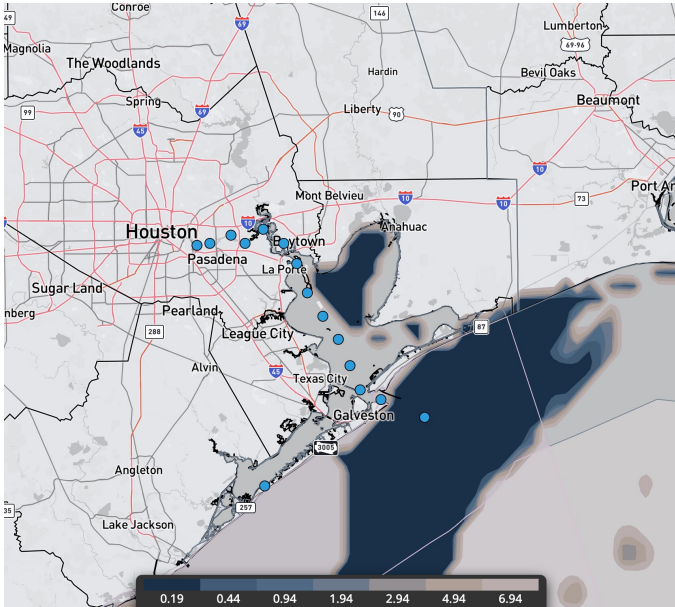
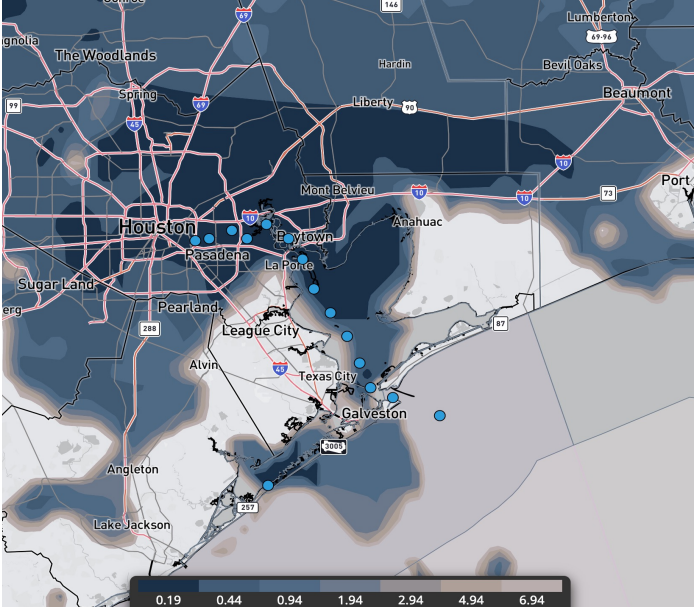
You can also access real-time forecast updates and 24/7 meteorological chat assistance on your **Clarity app.**

Houston Pilots Visibility Report

CURRENT VISIBILITY (5:30 AM CT)

12 PM CT THU VISIBILITY

Confidence



Above
Normal

Below
Normal

TIMEFRAME
DISCUSSED

THREAT

Now – 3 PM THU

HIGH

Dense fog (visibilities <0.50-mile) is expected to continue through the morning for **all Stations**. At times, fog may be more of a mist rather than dense fog, but visibilities will still be limited to 1 – 2 miles.

Fog will continue to spread southward S of Stations 25/26 to include Stations 11/12 and the Boarding Station through 9AM.

After 9 AM, fog is expected to clear out **N of Morgan's Point**, but patchy instances of fog may linger **S of Morgan's Point** through ~3PM, however most will clear out by 1PM. Areas at best risk for lingering patchy fog will be **S of Station 25/26**. Fog may linger at the **Boarding Station** through ~3PM.

Confidence remains lower on exactly when fog will be able to clear out, however, fog is expected to become patchier and less dense in nature post 10 AM. **The boarding station will be at highest risk during this time**. Confidence is high that fog will completely clear out of all stations by 3PM due to wind shift and increased wind speeds.

Houston Pilots Extended Range Visibility Report



Sunday 12/21/2025

Fog will be possible for all Stations through 10AM, with fog lingering S of Morgan’s Point into the afternoon. *Confidence is lower when/if fog will fully clear out of the bay.*

Forecast Confidence



Tuesday 12/23/2025

Fog will be possible for all Stations through at least 12PM.

Forecast Confidence



Monday 12/22/2025

Fog will be possible for all Stations through ~9AM. Stations S of Morgan’s Point will have the potential for fog to linger into the afternoon.

Forecast Confidence



Chance for Fog	
Sunday AM	Probable
Sunday PM	Probable
Monday AM	Probable
Monday PM	Probable
Tuesday AM	Possible
Tuesday PM	Possible

Houston Pilots Visibility Chart (miles)



Visibility	Thu 7 am	Thu 8 am	Thu 9 am	Thu 10 am	Thu 11 am	Thu 12 pm	Thu 1 pm	Thu 2 pm	Thu 3 pm	Thu 4 pm	Thu 5 pm	Thu 6 pm	Thu 7 pm	Thu 8 pm	Thu 9 pm	Thu 10 pm	Thu 11 pm	Fri 12 am	Fri 1 am	Fri 2 am	Fri 3 am	Fri 4 am	Fri 5 am	Fri 6 am
Houston Pilots N - 610 Bridge	0.3	0.3	0.3	1.1	3.9	6.9	10	10	10	10	10	10	10	10	10	10	10	10	10	10	10	10	10	10
Houston Pilots M - Kinder 1	0.3	0.3	0.3	1.6	3.9	6.9	10	10	10	10	10	10	10	10	10	10	10	10	10	10	10	10	10	10
Houston Pilots L - Greens Bayou	0.3	0.3	0.3	1.1	3.9	6.9	10	10	10	10	10	10	10	10	10	10	10	10	10	10	10	10	10	10
Houston Pilots K - Shell Crude	0.3	0.3	0.3	1.6	3.9	6.9	10	10	10	10	10	10	10	10	10	10	10	10	10	10	10	10	10	10
Houston Pilots J - Lynchburg Ferries	0.3	0.3	0.3	1.1	3.9	6.9	10	10	10	10	10	10	10	10	10	10	10	10	10	10	10	10	10	10
Houston Pilots I - Exxon 3	0.3	0.3	0.3	1.6	4.9	6.9	10	10	10	10	10	10	10	10	10	10	10	10	10	10	10	10	10	10
Houston Pilots H - Morgans Point	0.3	0.3	0.3	1.6	4.9	6.9	10	10	10	10	10	10	10	10	10	10	10	10	10	10	10	10	10	10
Houston Pilots G - 75/76	0.3	0.3	0.3	0.3	4.9	6.9	10	10	10	10	10	10	10	10	10	9	10	10	10	10	10	10	10	10
Houston Pilots F - 63/64	0.3	0.3	0.3	0.3	4.9	7.9	10	10	10	10	10	10	10	10	10	9	10	10	10	10	10	10	10	10
Houston Pilots E - 51/52	0.5	0.5	2	6.9	9	7.9	10	10	10	10	10	10	10	10	10	9	10	10	10	10	10	10	10	10
Houston Pilots D - 37/38	0.5	2.5	2.9	6.9	9	7.9	9	10	10	10	10	10	10	10	10	9	10	10	10	10	10	10	10	10
Houston Pilots C - 25/26	2.9	4.9	2.9	6.9	9	7.9	10	10	10	9	10	10	10	10	10	9	9	10	10	10	10	10	10	10
Houston Pilots B - 11/12	3.9	2.9	2.9	5.9	7.9	7.9	9	10	9	7.9	10	10	10	10	10	7.9	9	10	10	10	10	10	10	10
Houston Pilots A - 1 & 2 Bravo	3.9	3.9	1.6	2.9	3.9	2.9	6.9	7.9	6.9	6.9	6.9	10	10	10	10	7.9	7.9	9	10	10	10	10	10	10

NOTE: This is automated data that may/may not agree with the official BAM thinking that’s found on the daily slides or special visibility report slides. This data should be used as a guide only

Houston Pilots Wind Chart

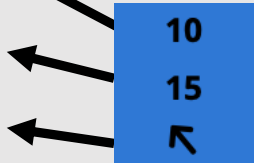


Forecast Confidence



Sustained Wind 10 Knots
Gusts 15 Knots
Wind from the SE

Example



Wind	Thu 3 am	Thu 4 am	Thu 5 am	Thu 6 am	Thu 7 am	Thu 8 am	Thu 9 am	Thu 10 am	Thu 11 am	Thu 12 pm	Thu 1 pm	Thu 2 pm	Thu 3 pm	Thu 4 pm	Thu 5 pm	Thu 6 pm	Thu 7 pm	Thu 8 pm	Thu 9 pm	Thu 10 pm	Thu 11 pm	Fri 12 am	Fri 1 am	Fri 2 am
Houston Pilots N - 610 Bridge	3	3	3	3	5	6	6	7	8	10	10	10	10	10	10	9	8	8	8	9	9	9	8	8
	9	8	9	9	9	10	13	15	16	20	20	21	20	20	20	17	15	15	16	18	18	17	17	16
	↖	↖	↖	↖	↖	↗	↗	↗	↗	↗	↗	→	→	→	→	↘	↘	↘	↘	↘	↘	↘	↘	↘
Houston Pilots M - Kinder 1	5	3	3	3	5	6	6	7	8	9	10	10	10	10	10	8	8	8	8	9	9	9	8	8
	9	8	9	9	9	10	13	15	16	20	20	21	20	20	20	17	15	15	16	18	18	18	17	16
	↖	↖	↖	↖	↖	↗	↗	↗	↗	↗	↗	→	→	→	→	↘	↘	↘	↘	↘	↘	↘	↘	↘
Houston Pilots L - Greens Bayou	5	3	3	3	5	6	6	7	8	9	10	10	10	10	9	8	8	8	8	8	9	8	8	8
	9	9	9	9	9	10	13	14	16	18	20	20	20	20	18	17	15	15	16	17	18	18	17	16
	↖	↖	↖	↖	↖	↗	↗	↗	↗	↗	↗	→	→	→	→	↘	↘	↘	↘	↘	↘	↘	↘	↘
Houston Pilots K - Shell Crude	5	3	3	3	5	6	6	7	8	9	10	10	10	10	9	8	7	7	8	8	9	8	8	8
	10	9	9	9	9	10	13	14	16	18	20	20	20	20	18	16	15	15	16	17	18	18	17	17
	↖	↖	↖	↖	↖	↗	↗	↗	↗	↗	↗	→	→	→	→	↘	↘	↘	↘	↘	↘	↘	↘	↘
Houston Pilots J - Lynchburg Ferries	3	3	3	3	3	5	6	7	8	9	10	10	10	10	9	8	7	7	8	8	8	8	8	8
	9	9	9	9	9	10	13	14	16	18	20	20	20	20	18	17	15	15	16	17	18	17	17	16
	↖	↖	↖	↖	↖	↗	↗	↗	↗	↗	↗	→	→	→	→	↘	↘	↘	↘	↘	↘	↘	↘	↘
Houston Pilots I - Exxon 3	8	7	7	7	7	8	8	9	10	10	12	12	13	13	12	10	10	10	12	13	13	13	13	13
	12	10	10	10	10	12	13	15	16	18	20	20	20	20	20	17	16	16	17	18	20	20	18	18
	↖	↖	↖	↖	↖	↗	↗	↗	↗	↗	↗	→	→	→	→	↘	↘	↘	↘	↘	↘	↘	↘	↘
Houston Pilots H - Morgans Point	8	7	7	7	7	8	8	8	9	10	12	12	12	12	12	10	10	10	10	13	13	13	13	13
	12	10	10	10	10	12	13	15	16	18	20	20	20	20	18	17	15	15	17	18	20	20	20	20
	↖	↖	↖	↖	↖	↗	↗	↗	↗	↗	↗	→	→	→	→	↘	↘	↘	↘	↘	↘	↘	↘	↘
Houston Pilots G - 75/76	8	8	8	8	8	8	9	10	10	10	12	12	12	13	12	10	10	10	13	13	14	15	15	15
	13	12	12	12	13	14	15	16	17	20	20	20	20	20	20	17	16	16	17	20	21	22	22	22
	↖	↖	↖	↖	↖	↗	↗	↗	↗	↗	↗	→	→	→	→	↘	↘	↘	↘	↘	↘	↘	↘	↘
Houston Pilots F - 63/64	8	8	8	8	8	8	9	10	10	10	10	10	10	12	10	10	10	10	12	13	13	14	15	15
	13	12	12	12	13	14	15	16	17	18	20	20	20	20	18	16	15	16	17	20	21	22	22	22
	↖	↖	↖	↖	↖	↗	↗	↗	↗	↗	↗	→	→	→	→	↘	↘	↘	↘	↘	↘	↘	↘	↘
Houston Pilots E - 51/52	8	8	8	8	8	8	9	10	10	10	10	10	10	10	10	10	9	10	12	13	13	14	15	15
	13	12	12	12	13	13	15	16	16	18	18	18	18	18	17	16	14	15	17	18	21	21	22	22
	↖	↖	↖	↖	↖	↗	↗	↗	↗	↗	↗	→	→	→	→	↘	↘	↘	↘	↘	↘	↘	↘	↘
Houston Pilots D - 37/38	8	8	8	8	8	8	9	10	10	10	10	10	10	10	10	10	9	10	10	13	13	14	15	15
	13	10	12	12	13	14	15	16	16	17	18	18	18	17	16	15	14	15	16	18	21	21	22	23
	↖	↖	↖	↖	↖	↗	↗	↗	↗	↗	↗	→	→	→	→	↘	↘	↘	↘	↘	↘	↘	↘	↘
Houston Pilots C - 25/26	8	8	8	8	8	8	9	10	10	10	10	10	10	10	10	9	8	9	10	12	13	14	15	15
	13	10	12	12	13	14	15	16	16	17	18	18	18	17	16	15	14	15	16	18	20	21	22	23
	↖	↖	↖	↖	↖	↗	↗	↗	↗	↗	↗	→	→	→	→	↘	↘	↘	↘	↘	↘	↘	↘	↘
Houston Pilots B - 11/12	8	7	7	8	8	8	8	9	10	10	10	10	10	10	9	8	8	8	9	10	12	13	13	14
	13	10	12	12	13	14	14	15	16	17	17	17	17	16	16	14	13	15	15	17	18	20	21	22
	↖	↖	↖	↖	↖	↗	↗	↗	↗	↗	↗	→	→	→	→	↘	↘	↘	↘	↘	↘	↘	↘	↘
Houston Pilots A - 1 & 2 Bravo	9	8	9	9	9	10	10	10	10	10	12	10	10	10	10	9	9	10	12	13	13	15	15	16
	14	13	13	14	14	15	16	16	17	18	18	18	18	17	16	15	15	15	17	18	21	22	23	24
	↖	↖	↖	↖	↖	↗	↗	↗	↗	↗	↗	↗	↗	↗	↗	↘	↘	↘	↘	↘	↘	↘	↘	↘

NOTE: This is automated data that may/may not agree with the official BAM thinking that's found on the daily slides.
This data should be used as a guide only.

Houston Pilots: THU. 12/18/2025

Forecast Discussion

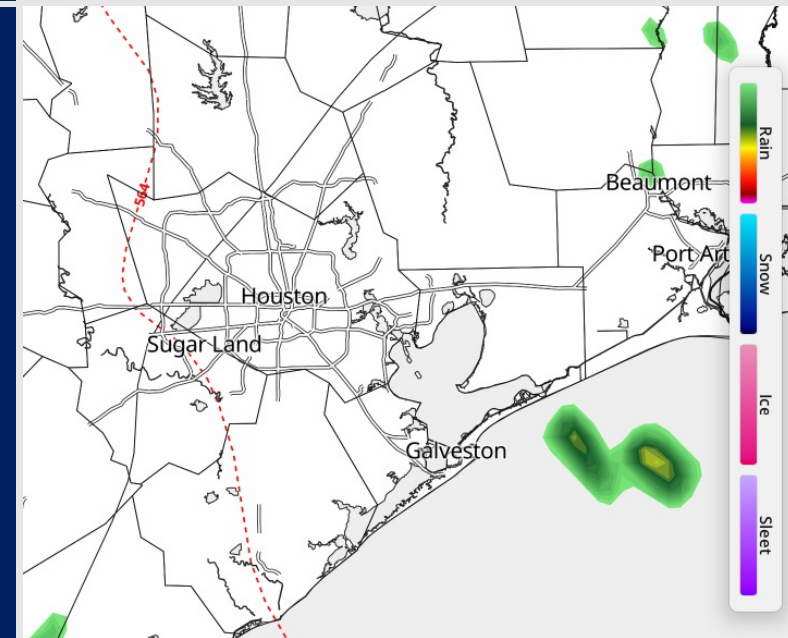
Precip: A few isolated showers possible through 8AM.

Wind: Winds will be out of the S/SW through 9AM before gradually rotating clockwise to be out of the N by 7PM. **N of Morgan's Point:** Winds of 3 – 8 kts through 12 PM, increasing to 5 – 10 kts for the remainder of the day. **S of Morgan's Point:** Winds of 5 – 10 kts through 9 PM, increasing to 15 – 20 kts. **Wind gusts up to 25 kts in play S of Morgan's Point after 9PM with wind gusts near the Boarding Station reaching 30 kts.**

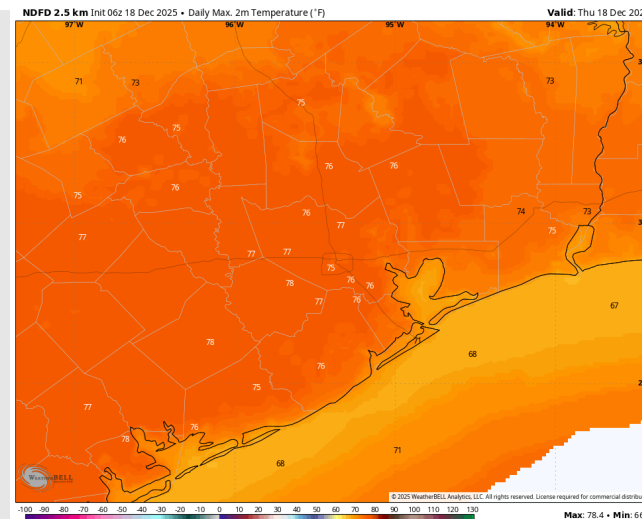
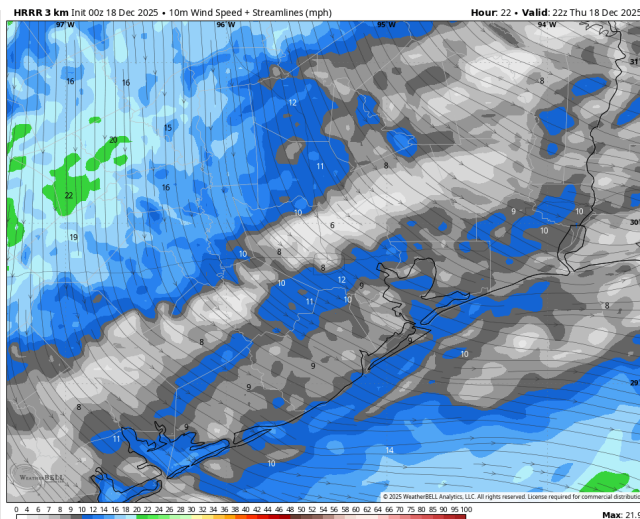
High Temps: **N of Morgan's Point:** Upper 70s F. **S of Morgan's Point:** Mid 70s F.

Visibility: Patchy fog is anticipated through 1 PM. See visibility slide for more information!

Precip Image: 6 AM CT



Wind Speed:
4 PM CT



High Temps
THU

Houston Pilots: FRI. 12/19/2025

Forecast Discussion

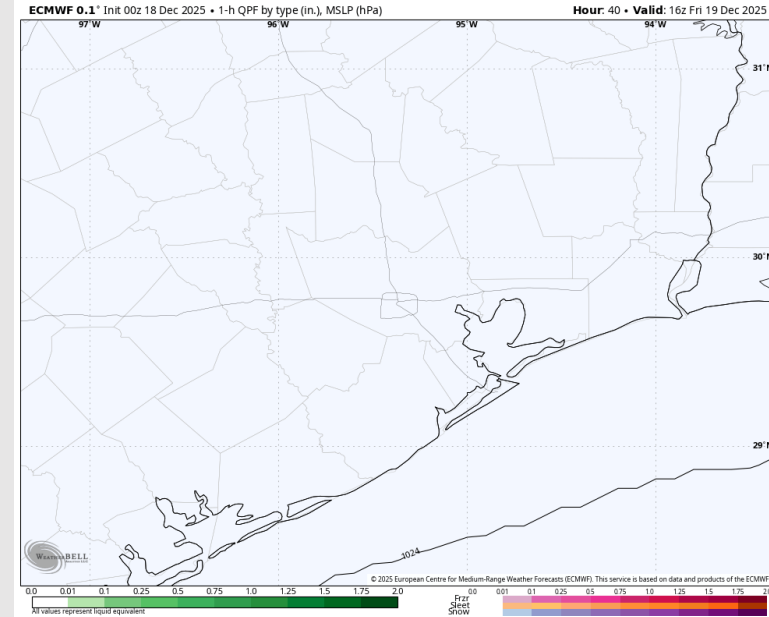
Precip: Dry conditions favored.

Wind: Winds will start out of the N, gradually turning clockwise throughout the day to settle out of the SE by 5 PM. **N of Morgan's Point:** Winds 2 – 7 kts. **S of Morgan's Point:** Winds at 10 – 15 kts, decreasing to 5 – 10 kts after 1PM. **Gusts S of Morgan's Point may reach 20 – 25 kts through 8 AM.**

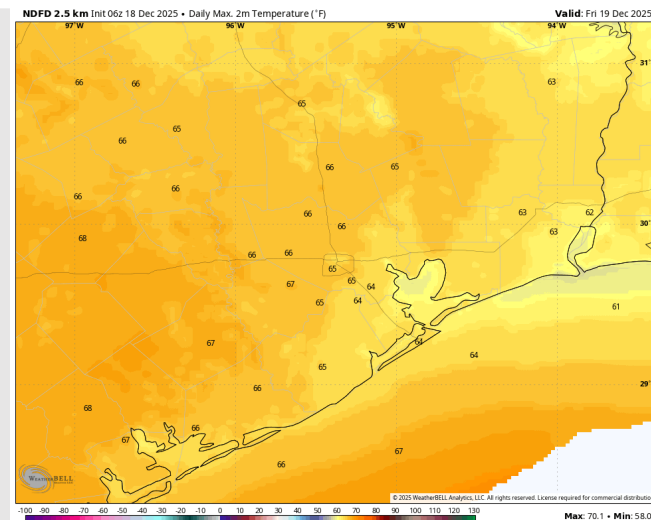
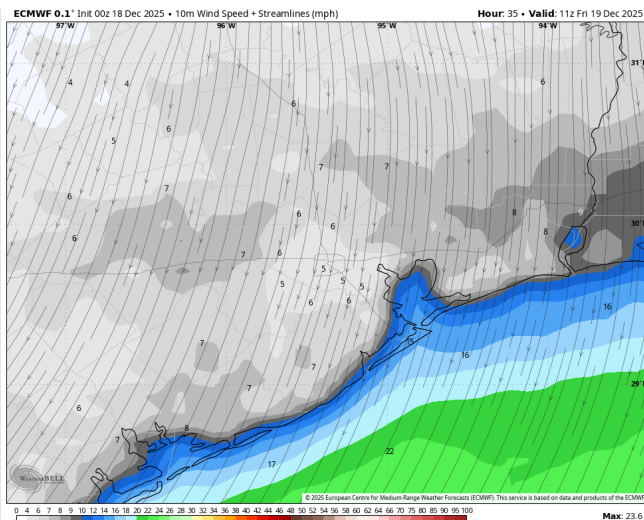
High Temps: **N of Morgan's Point:** Mid 60s F. **S of Morgan's Point:** Low 60s F.

Visibility: No visibility concerns for Friday.

Precip Image: 10 AM CT



Wind Speed:
5 AM CT



High Temps
FRI

Houston Pilots: SAT. 12/20/2025

Forecast Discussion

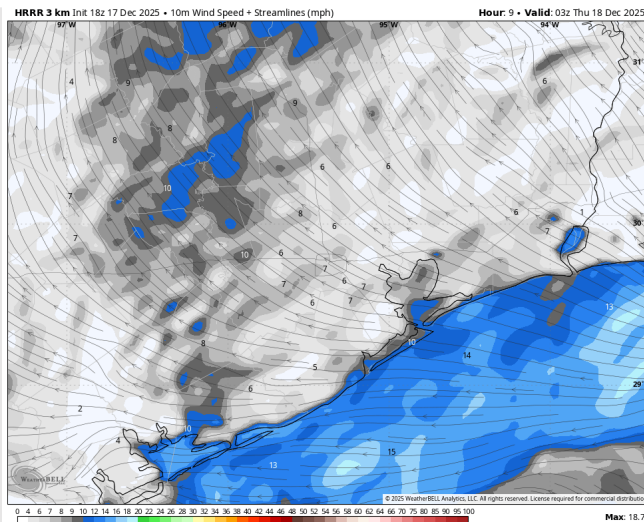
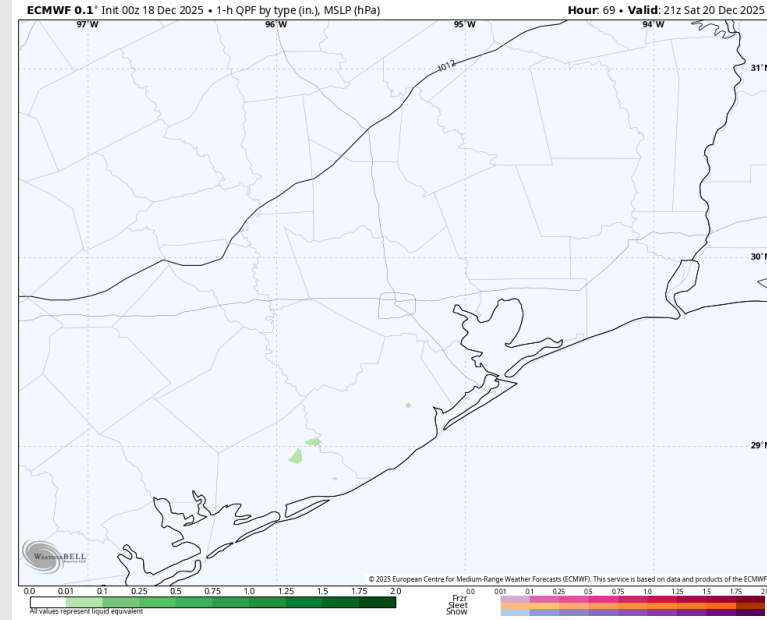
Precip: Favoring dry conditions.

Wind: Winds will be out of the S/SW. **N of Morgan's Point:** Winds of 2 – 7 kts, increasing to 8 – 13 kts from 12 – 6 PM. **S of Morgan's Point:** Winds generally at 8 – 13 kts throughout the day. **Wind gusts of 20 – 25 kts will be possible for all Stations 12 – 6PM.**

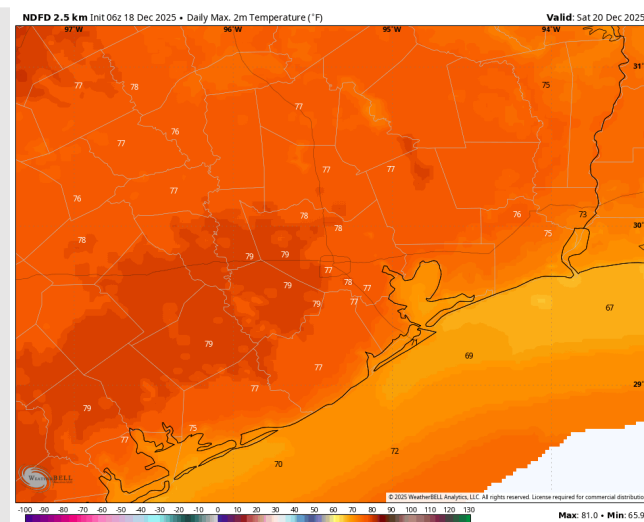
High Temps: **N of Morgan's Point:** Upper 70s F. **S of Morgan's Point:** Low 70s F.

Visibility: Patchy fog possible for Stations S of Morgan's Point after 10PM, expanding to include All Stations SUN AM.

Precip Image: 3 PM CT



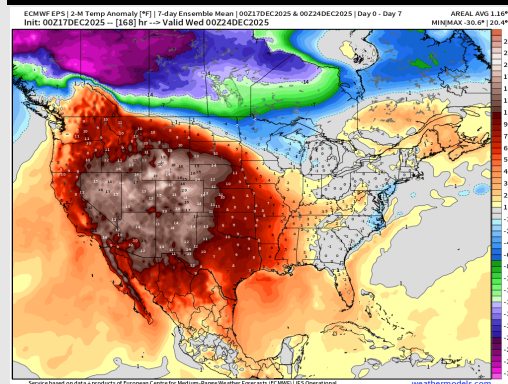
Wind Speed:
9 PM CT



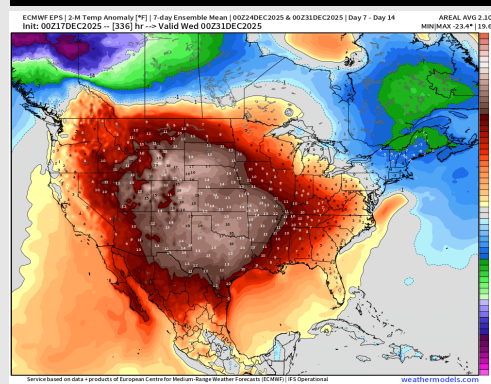
High Temps
SAT

Houston Pilots: 12/18/25

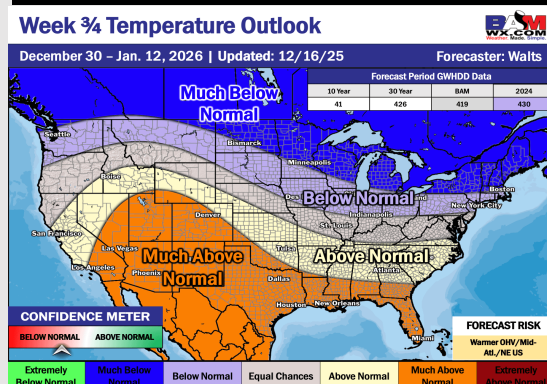
Next 7 Day Temperature Departure



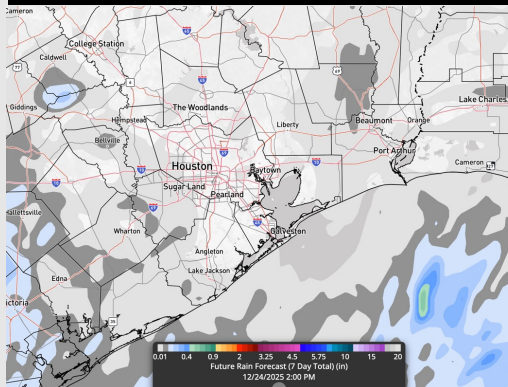
8-14 Day Temperature Departure



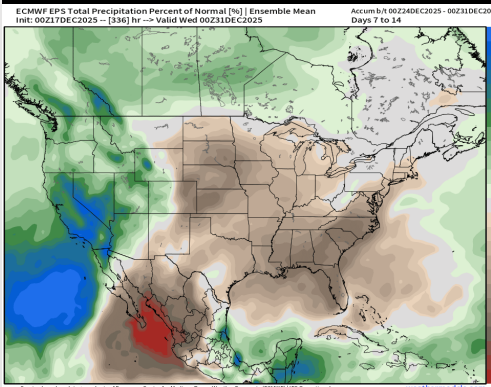
15-30 Day Temperature Departure



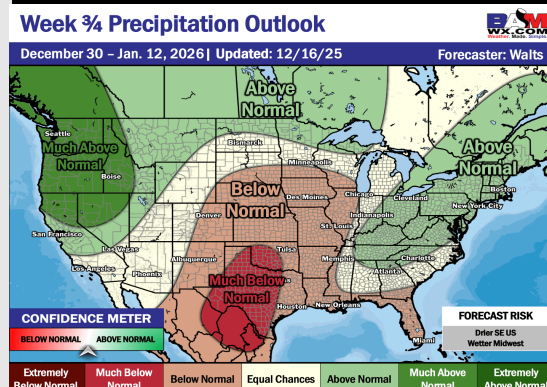
Next 7 Day Total Precipitation



8-14 Day % of Average Precip.



15-30 Day % of Average Precip.



- Above normal temps are favored over the next 7 days, with isolated rain chances returning early next week.
- Above normal temperatures and below normal rainfall favored in the Week 2 timeframe.
- Above normal temperatures and below normal rainfall expected the first part of January.