

# Houston Pilots Forecast Package



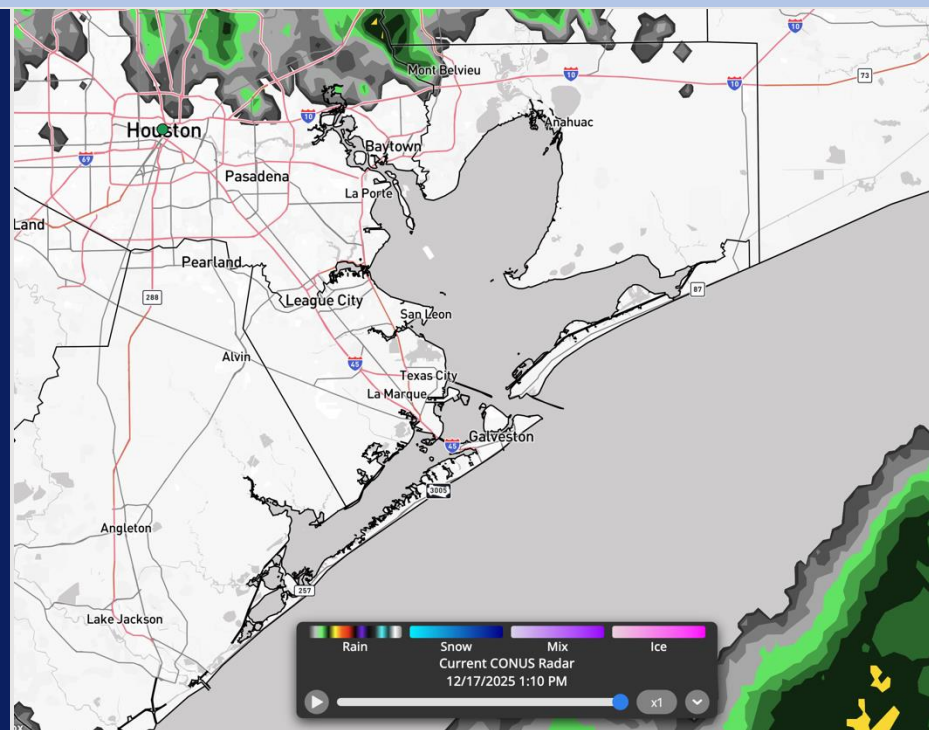
Updated: 12:15 PM CT

Wednesday, December 17, 2025

Forecaster: Kleitsch/ Griffin

## Weather Headlines

- Rain has scoured out quicker than anticipated and as a result, fog has moved in faster.
- Wind gusts up to 25 kts will be possible Thursday PM to Friday.
- Fog will continue to be possible through THU AM. Lower confidence of into THU PM.



Current Radar: 1:30 AM CT

As always, please do not hesitate to reach out to us with any forecast questions at [\(317\)-560-8122](tel:317-560-8122). Press 1 for forecast questions.



You can also access real-time forecast updates and 24/7 meteorological chat assistance on your [Clarity](#) app.

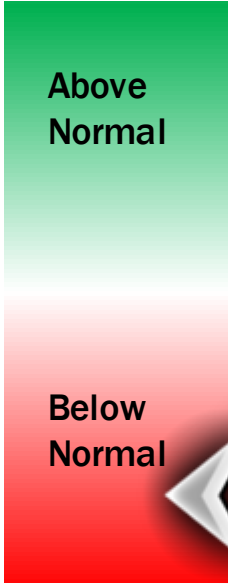
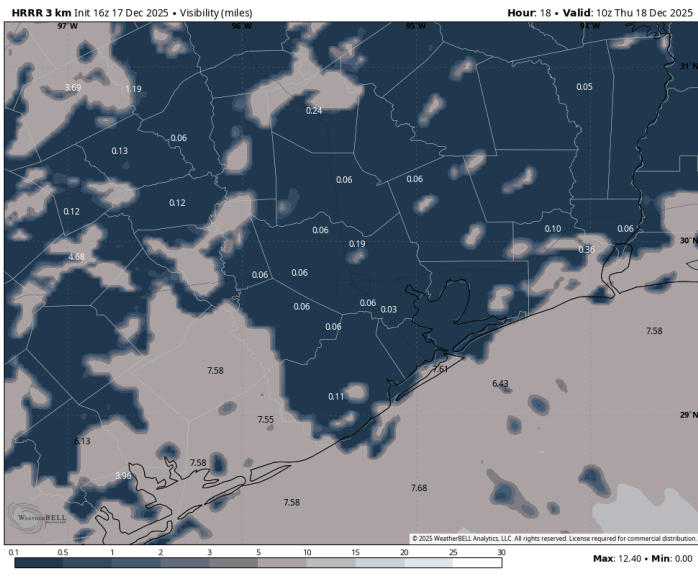
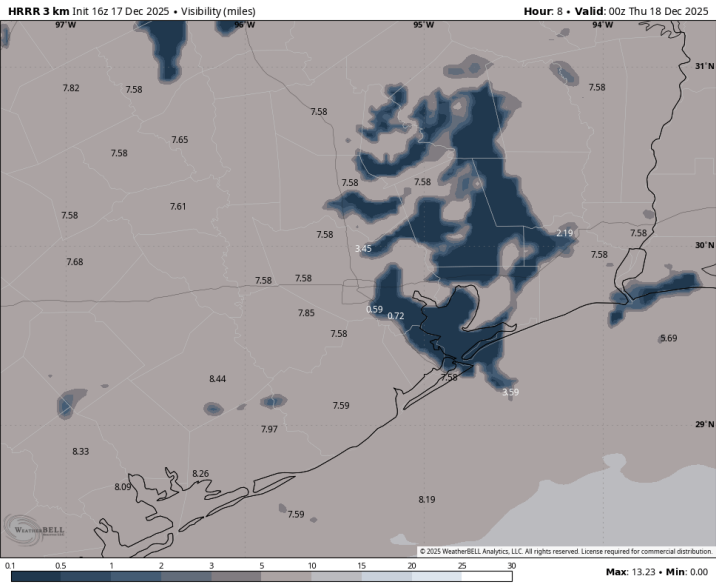
# Houston Pilots Visibility Report



## 6 PM CT WED VISIBILITY

## 4 AM CT THU VISIBILITY

## Confidence



### TIMEFRAME DISCUSSED

### THREAT

Now – 7 PM THU

MED

Areas of dense fog have already formed near Morgans point to north of 25/26 which is faster vs initially thought.

Between Morgans Point and 25/26, fog will continue to be risk through 6 PM at times locally dense of less than 1 mile.

Post 6 PM, the concern is fog begins to expand northward to encompass stations north of Morgans point to / just north of 25/26. Fog risks (visibility of less than 1 mile) linger through the overnight.

Near 4 AM, fog is expected to spread southward back towards the boarding station (visibility less than 1 mile).

All stations at that point will be at risk for sea fog through 9 – 10 AM (visibility less than 1 mile).

Confidence drops off thereafter. However, fog is expected to become patchier and less dense in nature post 10 AM. However, fog risk can remain towards for stations south of Morgans point through 7 PM. The boarding station will be at highest risk during this time.

Confidence remains below normal on precise timing/ progression.

# Houston Pilots Extended Range Visibility Report



## Saturday 12/20/2025

Low-end risk for fog will be possible from 3AM to 9AM, mainly for Stations N of Morgan’s Point. Fog will be possible again starting at 10PM.

### Forecast Confidence



## Monday 12/22/2025

Fog will be possible for all Stations through at least 12PM. Stations S of Morgan’s Point will have the potential for fog to linger through the afternoon/early evening.

### Forecast Confidence



## Sunday 12/21/2025

Fog will be possible for all Stations through 10AM, with fog likely lingering S of Morgan’s Point throughout the day.

### Forecast Confidence



Chance for Fog	
Saturday AM	Possible
Saturday PM	Possible
Sunday AM	Probable
Sunday PM	Probable
Monday AM	Probable
Monday PM	Probable

# Houston Pilots Visibility Chart (miles)



Visibility	Wed 2 pm	Wed 3 pm	Wed 4 pm	Wed 5 pm	Wed 6 pm	Wed 7 pm	Wed 8 pm	Wed 9 pm	Wed 10 pm	Wed 11 pm	Thu 12 am	Thu 1 am	Thu 2 am	Thu 3 am	Thu 4 am	Thu 5 am	Thu 6 am	Thu 7 am	Thu 8 am	Thu 9 am	Thu 10 am	Thu 11 am	Thu 12 pm	Thu 1 pm
Houston Pilots N - 610 Bridge	4.9	5.9	6.9	5.9	5.9	5.9	5.9	3.9	4.9	1.1	2.9	0.3	0.3	0.3	0.3	0.3	0.2	0.2	0.2	0.3	0.5	3.9	5.9	6.9
Houston Pilots M - Kinder 1	4.9	5.9	6.9	6.9	5.9	5.9	5.9	3.9	4.9	1.1	2.9	0.3	0.3	0.3	0.3	0.3	0.2	0.2	0.2	0.3	0.5	3.9	5.9	6.9
Houston Pilots L - Greens Bayou	4.9	6.9	6.9	6.9	5.9	6.9	3.9	4.9	3.9	1.1	2.9	0.3	0.3	0.3	0.3	0.3	0.2	0.2	0.2	0.3	0.5	3.9	5.9	6.9
Houston Pilots K - Shell Crude	4.9	6.9	6.9	6.9	6.9	6.9	3.9	4.9	3.9	1.1	2.9	0.3	0.3	0.3	0.3	0.3	0.2	0.2	0.2	0.3	0.5	3.9	5.9	6.9
Houston Pilots J - Lynchburg Ferries	4.9	6.9	6.9	6.9	6.9	6.9	6.9	4.9	3.9	2	2.9	0.3	0.3	0.3	0.3	0.3	0.2	0.2	0.2	0.3	0.5	3.9	5.9	6.9
Houston Pilots I - Exxon 3	4.9	5.9	6.9	6.9	6.9	6.9	3.9	4.9	3.9	3.9	2.9	0.3	0.3	0.3	0.3	0.3	0.2	0.2	0.2	0.3	0.5	3.9	5.9	6.9
Houston Pilots H - Morgans Point	4.9	4.9	6.9	6.9	6.9	6.9	3.9	4.9	1.6	3.9	1.1	0.3	0.3	0.3	0.3	0.3	0.2	0.2	0.2	0.3	0.5	3.9	5.9	6.9
Houston Pilots G - 75/76	4.9	2.9	3.9	3.9	3.9	4.9	3.9	1.1	0.8	3.9	0.3	0.3	0.3	0.3	0.3	0.3	0.2	0.2	0.2	0.3	2	4.9	8	9
Houston Pilots F - 63/64	3.9	2.9	3.9	3.9	3.9	4.9	3.9	1.1	3.9	3.9	0.3	0.3	0.3	0.3	0.3	0.3	0.2	0.2	0.2	0.3	2	4.9	8	8
Houston Pilots E - 51/52	3.9	2.9	5.9	6.9	3.9	5.9	6.9	5.9	5.9	1.1	0.3	0.3	0.3	0.3	0.3	0.3	0.2	0.2	0.2	0.3	2.5	4.9	8	8
Houston Pilots D - 37/38	5.9	2.9	6.9	6.9	5.9	6.9	6.9	5.9	5.9	1.1	0.3	0.3	0.3	0.3	0.3	0.3	0.2	0.2	0.2	0.3	2.5	4.9	8	8
Houston Pilots C - 25/26	6.9	5.9	8	6.9	6.9	6.9	6.9	5.9	3.9	1.1	1.1	0.3	0.3	0.3	0.3	0.3	0.2	0.2	0.5	0.3	2.5	4.9	7	7
Houston Pilots B - 11/12	6.9	6.9	8	6.9	6.9	9	6.9	5.9	3.9	1.6	2.9	1.6	0.8	0.8	1.1	1.1	1.1	1.1	1.1	2	4.9	5.9	6	6
Houston Pilots A - 1 & 2 Bravo	6.9	7.9	8	6.9	8	10	4.9	7.9	6.9	6.9	4.9	5.9	5.9	2.5	2.9	2.9	3.9	4.9	5.9	4.9	6.9	7.9	6	1.6

NOTE: This is automated data that may/may not agree with the official BAM thinking that’s found on the daily slides or special visibility report slides. This data should be used as a guide only

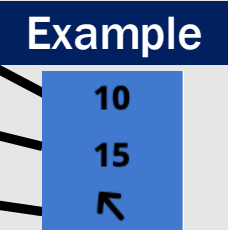
# Houston Pilots Wind Chart



Forecast Confidence



Sustained Wind 10 Knots  
Gusts 15 Knots  
Wind from the SE



Wind	Wed 2 pm	Wed 3 pm	Wed 4 pm	Wed 5 pm	Wed 6 pm	Wed 7 pm	Wed 8 pm	Wed 9 pm	Wed 10 pm	Wed 11 pm	Thu 12 am	Thu 1 am	Thu 2 am	Thu 3 am	Thu 4 am	Thu 5 am	Thu 6 am	Thu 7 am	Thu 8 am	Thu 9 am	Thu 10 am	Thu 11 am	Thu 12 pm	Thu 1 pm
Houston Pilots N - 610 Bridge	8 16 ↖	8 16 ↖	8 16 ↖	8 16 ↖	8 16 ↖	7 15 ↖	6 13 ↖	6 13 ↖	6 13 ↖	6 13 ↖	6 12 ↖	5 10 ↖	5 10 ↖	5 9 ↖	5 9 ↖	5 9 ↖	5 9 ↖	5 9 ↖	6 12 ↖	6 13 ↖	7 14 ↖	8 16 ↖	9 18 ↖	9 20 ↖
Houston Pilots M - Kinder 1	8 16 ↖	8 16 ↖	8 16 ↖	8 16 ↖	8 16 ↖	7 15 ↖	6 13 ↖	6 13 ↖	6 13 ↖	6 13 ↖	6 12 ↖	5 10 ↖	5 10 ↖	5 9 ↖	5 9 ↖	5 9 ↖	5 9 ↖	5 9 ↖	6 12 ↖	6 13 ↖	7 14 ↖	8 16 ↖	9 18 ↖	9 20 ↖
Houston Pilots L - Greens Bayou	8 15 ↖	8 16 ↖	8 16 ↖	8 16 ↖	8 16 ↖	7 15 ↖	6 13 ↖	6 13 ↖	6 13 ↖	6 13 ↖	6 12 ↖	5 10 ↖	5 10 ↖	5 9 ↖	5 9 ↖	3 9 ↖	5 9 ↖	5 9 ↖	6 12 ↖	6 13 ↖	7 14 ↖	8 16 ↖	8 17 ↖	9 18 ↖
Houston Pilots K - Shell Crude	8 15 ↖	8 16 ↖	8 16 ↖	8 16 ↖	8 16 ↖	7 15 ↖	6 13 ↖	6 14 ↖	6 13 ↖	6 13 ↖	6 12 ↖	5 10 ↖	5 10 ↖	5 9 ↖	5 9 ↖	5 9 ↖	5 9 ↖	5 10 ↖	6 12 ↖	6 13 ↖	7 14 ↖	8 16 ↖	8 17 ↖	9 18 ↖
Houston Pilots J - Lynchburg Ferries	7 15 ↖	8 16 ↖	8 16 ↖	8 16 ↖	8 16 ↖	7 15 ↖	6 13 ↖	6 13 ↖	6 13 ↖	6 13 ↖	5 12 ↖	5 10 ↖	5 10 ↖	3 9 ↖	3 9 ↖	3 9 ↖	3 9 ↖	3 9 ↖	5 12 ↖	6 13 ↖	6 14 ↖	8 15 ↖	8 16 ↖	9 18 ↖
Houston Pilots I - Exxon 3	9 16 ↖	10 17 ↖	10 17 ↖	10 17 ↖	10 16 ↖	10 16 ↖	10 15 ↖	10 15 ↖	10 15 ↖	9 15 ↖	9 14 ↖	8 14 ↖	8 13 ↖	8 12 ↖	8 10 ↖	7 10 ↖	7 10 ↖	7 12 ↖	8 13 ↖	8 14 ↖	8 14 ↖	9 15 ↖	10 16 ↖	10 18 ↖
Houston Pilots H - Morgans Point	9 16 ↖	10 17 ↖	10 17 ↖	10 17 ↖	10 17 ↖	10 16 ↖	10 15 ↖	10 15 ↖	9 15 ↖	9 15 ↖	8 14 ↖	8 14 ↖	8 13 ↖	8 12 ↖	7 10 ↖	7 10 ↖	7 10 ↖	7 10 ↖	8 13 ↖	8 13 ↖	8 14 ↖	9 15 ↖	9 16 ↖	10 18 ↖
Houston Pilots G - 75/76	9 16 ↖	10 17 ↖	10 18 ↖	10 18 ↖	10 18 ↖	10 17 ↖	10 16 ↖	10 16 ↖	10 16 ↖	10 16 ↖	10 15 ↖	10 15 ↖	9 14 ↖	8 13 ↖	8 13 ↖	8 13 ↖	8 13 ↖	8 13 ↖	8 13 ↖	9 15 ↖	9 16 ↖	10 16 ↖	10 17 ↖	10 18 ↖
Houston Pilots F - 63/64	8 16 ↖	9 17 ↖	10 18 ↖	10 18 ↖	10 17 ↖	10 17 ↖	10 16 ↖	10 16 ↖	10 16 ↖	10 16 ↖	10 15 ↖	10 15 ↖	9 14 ↖	8 13 ↖	8 13 ↖	8 13 ↖	8 13 ↖	8 13 ↖	8 14 ↖	9 15 ↖	9 16 ↖	10 16 ↖	10 17 ↖	10 18 ↖
Houston Pilots E - 51/52	9 16 ↖	9 17 ↖	10 17 ↖	10 17 ↖	10 17 ↖	10 17 ↖	10 16 ↖	10 16 ↖	10 16 ↖	10 15 ↖	10 15 ↖	9 14 ↖	9 14 ↖	8 13 ↖	8 12 ↖	8 12 ↖	8 12 ↖	8 13 ↖	8 14 ↖	9 15 ↖	9 15 ↖	9 16 ↖	9 16 ↖	10 17 ↖
Houston Pilots D - 37/38	9 15 ↖	9 17 ↖	10 17 ↖	10 17 ↖	10 17 ↖	10 16 ↖	10 16 ↖	10 16 ↖	10 15 ↖	10 15 ↖	9 15 ↖	9 14 ↖	8 14 ↖	8 13 ↖	8 12 ↖	8 12 ↖	8 12 ↖	8 13 ↖	8 14 ↖	8 15 ↖	9 15 ↖	9 16 ↖	9 16 ↖	10 16 ↖
Houston Pilots C - 25/26	9 15 ↖	9 16 ↖	10 16 ↖	10 17 ↖	10 16 ↖	10 16 ↖	10 15 ↖	10 15 ↖	9 15 ↖	9 15 ↖	9 15 ↖	9 14 ↖	8 13 ↖	8 13 ↖	8 12 ↖	8 12 ↖	8 12 ↖	8 13 ↖	8 14 ↖	8 14 ↖	9 15 ↖	9 16 ↖	9 16 ↖	10 16 ↖
Houston Pilots B - 11/12	9 15 ↖	9 16 ↖	10 16 ↖	10 16 ↖	9 16 ↖	9 16 ↖	9 15 ↖	8 15 ↖	8 14 ↖	8 14 ↖	8 14 ↖	8 14 ↖	8 13 ↖	8 13 ↖	7 12 ↖	7 12 ↖	7 12 ↖	7 12 ↖	8 13 ↖	8 14 ↖	8 15 ↖	9 15 ↖	9 16 ↖	9 16 ↖
Houston Pilots A - 1 & 2 Bravo	8 15 ↖	9 16 ↖	10 16 ↖	10 16 ↖	10 16 ↖	10 16 ↖	10 16 ↖	10 16 ↖	10 16 ↖	10 16 ↖	10 15 ↖	10 15 ↖	9 15 ↖	9 14 ↖	9 13 ↖	9 13 ↖	9 13 ↖	9 14 ↖	9 15 ↖	9 15 ↖	10 16 ↖	10 16 ↖	10 16 ↖	10 16 ↖

NOTE: This is automated data that may/may not agree with the official BAM thinking that's found on the daily slides.  
This data should be used as a guide only.



# Houston Pilots: WED. 12/17/2025

## Forecast Discussion

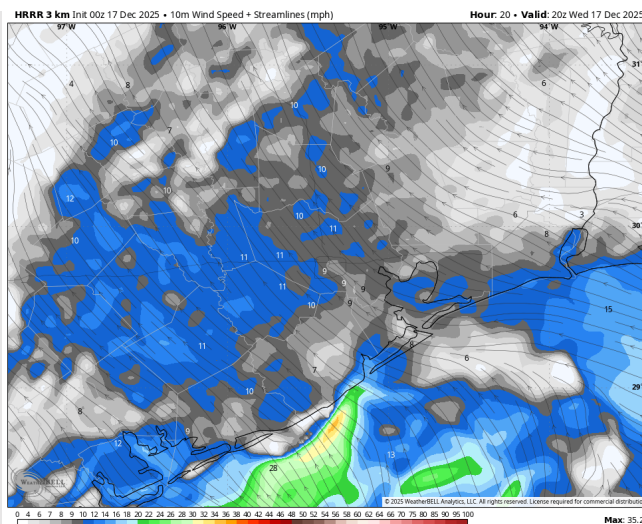
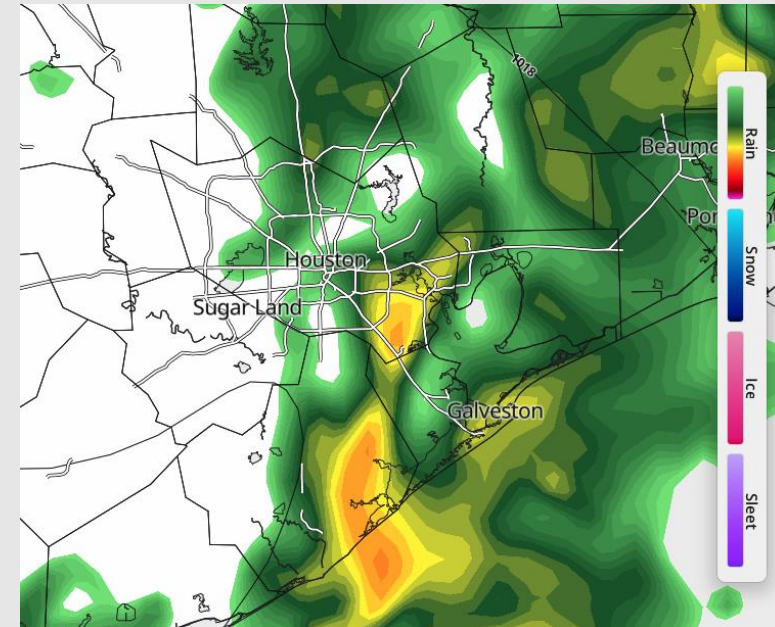
**Precip:** Scattered to rather widespread showers are expected through 9 AM. After 9AM, activity is anticipated to become more hit/miss in nature through 8PM before clearing out. **Any Lightning strikes are expected to remain few and far between.**

**Wind:** Winds will be out of the E/SE most of the day. **N of Morgan's Point:** Winds of 5 – 10 kts through the day. **S of Morgan's Point:** Winds generally at 5 – 10 kts.

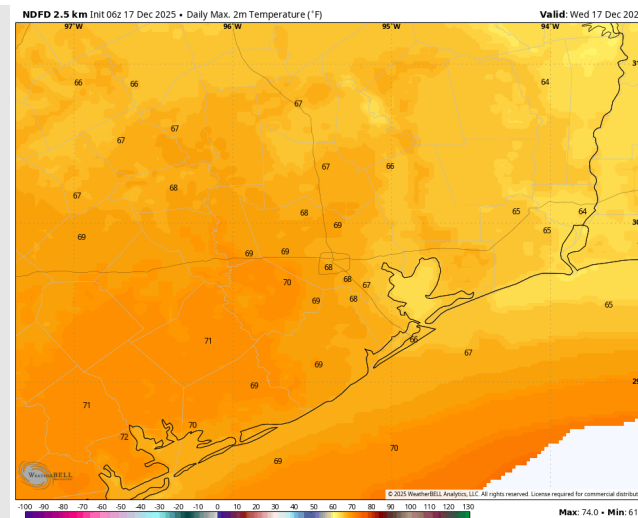
**High Temps:** **N of Morgan's Point:** Upper 60s F. **S of Morgan's Point:** Mid to upper 60s F.

**Visibility:** Fog risks linger through THU AM. See visibility slide for more information!

## Precip Image: 5 AM CT



**Wind Speed:**  
**2 PM CT**



**High Temps**  
**WED**

# Houston Pilots: THU. 12/18/2025

## Forecast Discussion

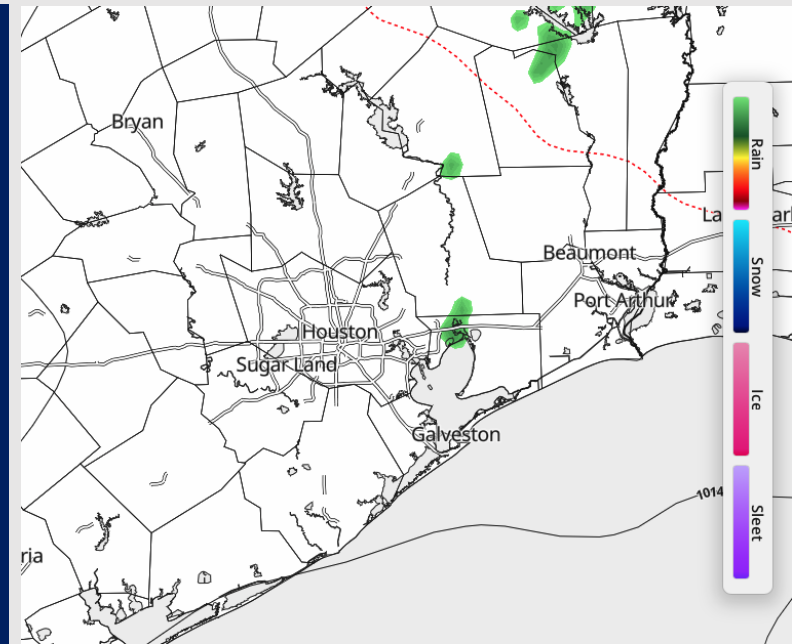
**Precip:** A few isolated light showers possible from 3AM to 10AM, however, mostly dry conditions are favored.

**Wind:** Winds out of the SW through 9 AM, turning out of the NW by 4 PM. Winds finally turn out of the N by 8 PM. **N of Morgan's Point:** Winds of 3 – 8 kts through 11 AM, increasing to 6 – 11 kts for the remainder of the day. **S of Morgan's Point:** Winds of 8 – 13 kts through 8 PM, increasing to 15 – 20 kts through midnight. **Wind gusts up to 20 kts will be in play for all Stations throughout the day, increasing to 25 kts after 8PM S of Morgan's Point.**

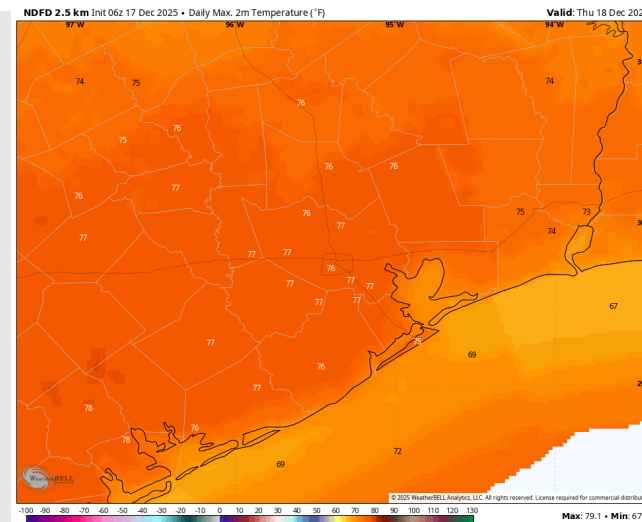
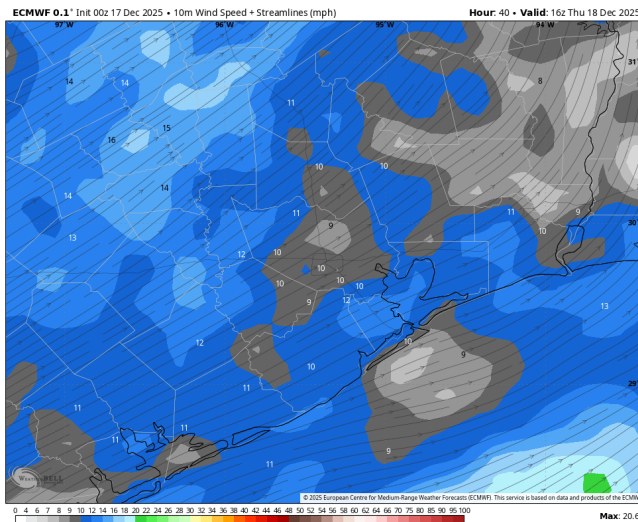
**High Temps:** **N of Morgan's Point:** Upper 70s F. **S of Morgan's Point:** Mid 70s F.

**Visibility:** Patchy fog is anticipated through 12 PM. See visibility slide for more information!

## Precip Image: 9 AM CT



**Wind Speed:**  
10 AM CT



**High Temps**  
THU

# Houston Pilots: FRI. 12/19/2025

## Forecast Discussion

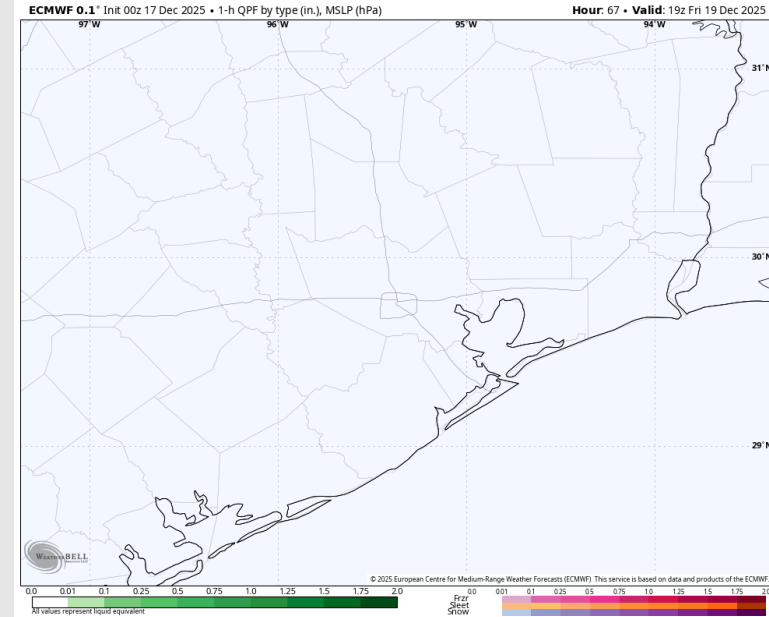
**Precip:** Dry conditions favored.

**Wind:** Winds will start out of the N, gradually turning clockwise throughout the day to settle out of the SE by 5 PM. **N of Morgan's Point:** Winds 2 – 7 kts. **S of Morgan's Point:** Winds 5 – 10 kts. **Gusts at the Boarding Station may reach 22 kts through 1PM.**

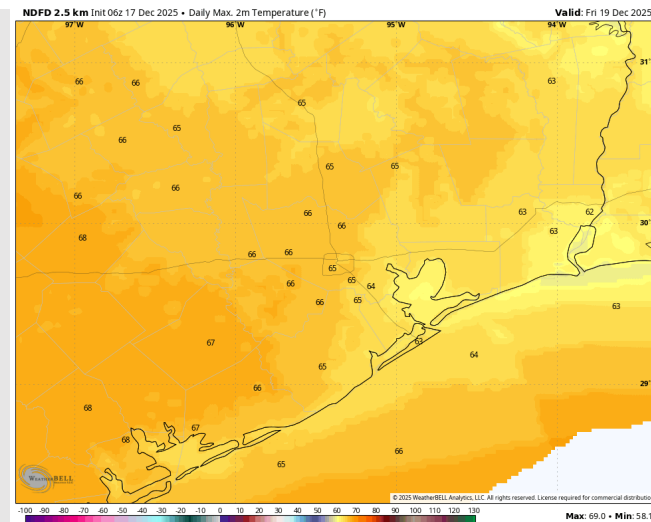
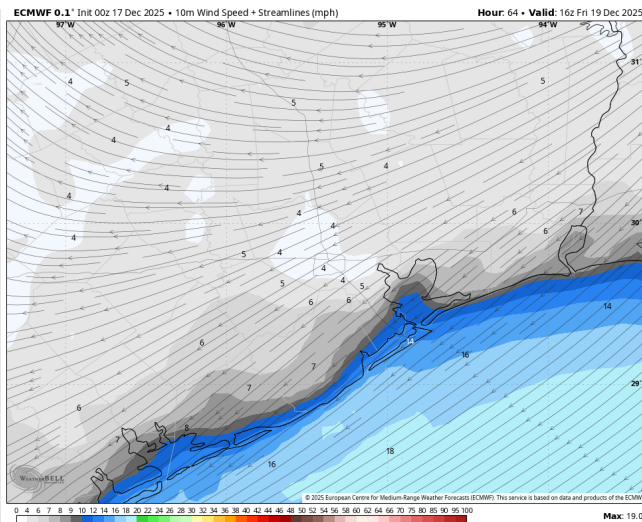
**High Temps:** **N of Morgan's Point:** Mid 60s F. **S of Morgan's Point:** Low 60s F.

**Visibility:** No visibility concerns for Friday.

## Precip Image: 1 PM CT



**Wind Speed:**  
10 AM CT

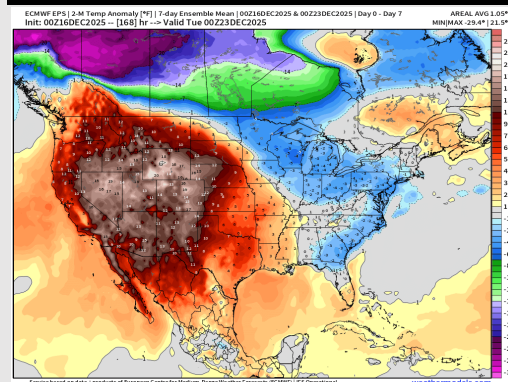


**High Temps**  
**FRI**

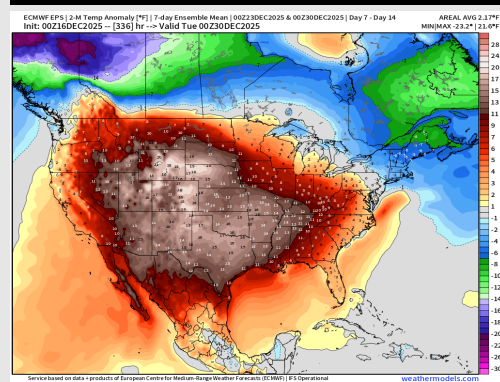


# Houston Pilots: 12/17/25

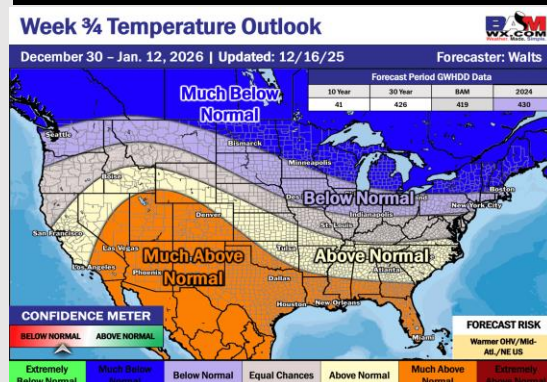
## Next 7 Day Temperature Departure



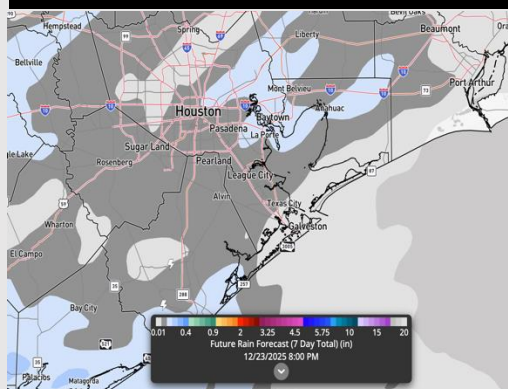
## 8-14 Day Temperature Departure



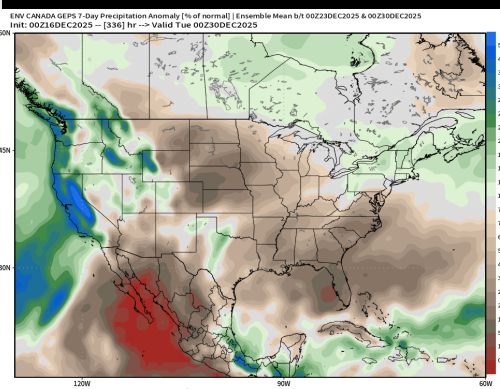
## 15-30 Day Temperature Departure



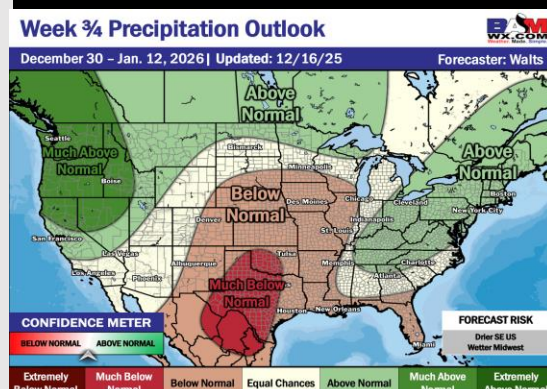
## Next 7 Day Total Precipitation



## 8-14 Day % of Average Precip.



## 15-30 Day % of Average Precip.



- Above normal temps are favored over the next 7 days, with primary rain chances coming Wed/Thu and Sun/Mon.
- Above normal temperatures and below normal rainfall favored in the Week 2 timeframe.
- Above normal temperatures and below normal rainfall expected the first part of January.