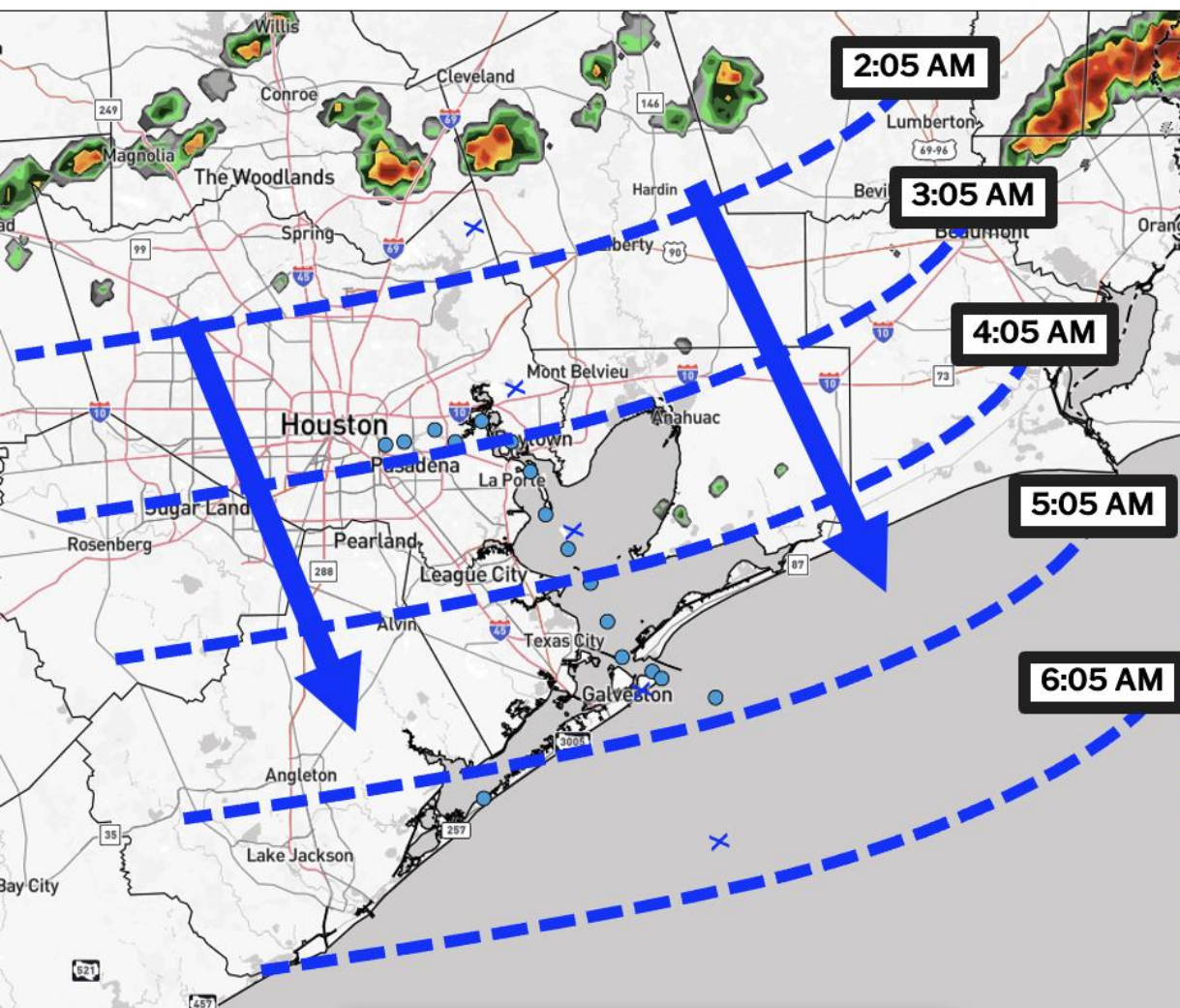


✓ BLUE LINES = Approximate arrival time of broken-up scattered storms.



Confidence in Timing:
3/5

- A few pockets of thunderstorm activity will work south towards the bay at ~15 mph through morning.
- Lightning will be a risk from any storms.

Houston Pilots Forecast Package



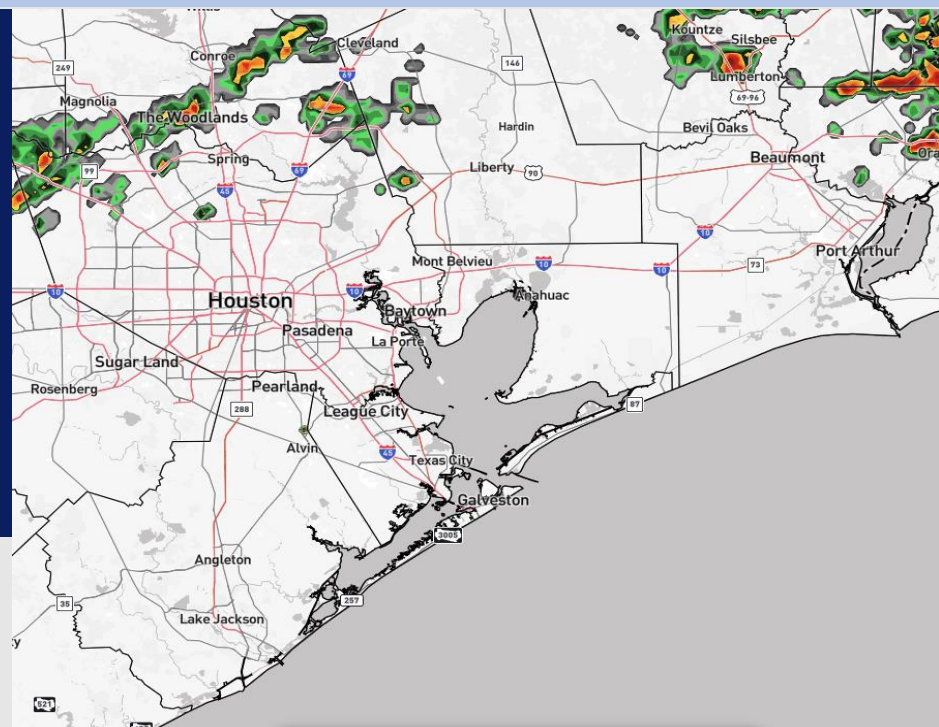
Updated: 2:00 AM CT

Sunday, December 14, 2025

Forecaster: Noah Began

Weather Headlines

- **Scattered thunderstorms will work through the bay around 4 AM this morning. Lightning will be a risk.**
- **Gusts of 35 kts possible today through 12 PM noon for all Stations.**



Current Radar: 1:25 AM CT

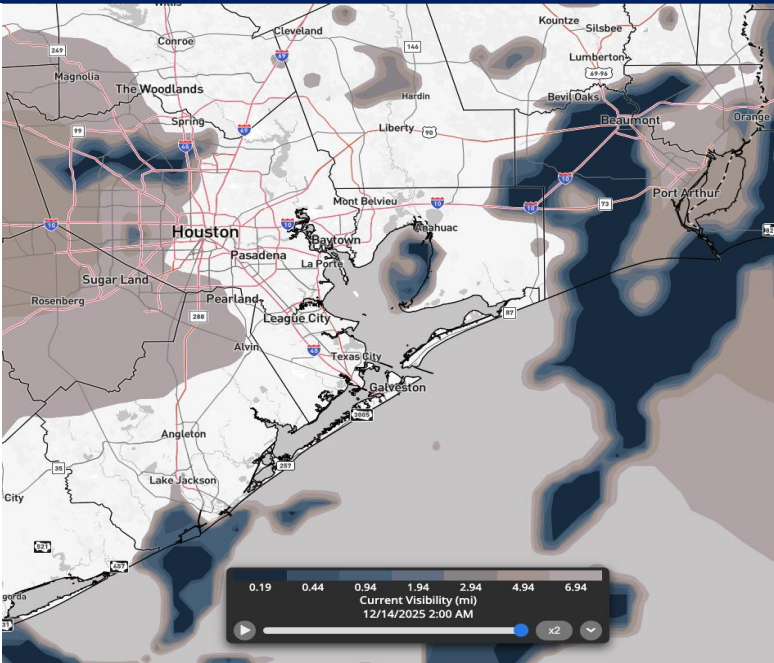
As always, please do not hesitate to reach out to us with any forecast questions at **(317)-560-8122**. Press 1 for forecast questions.



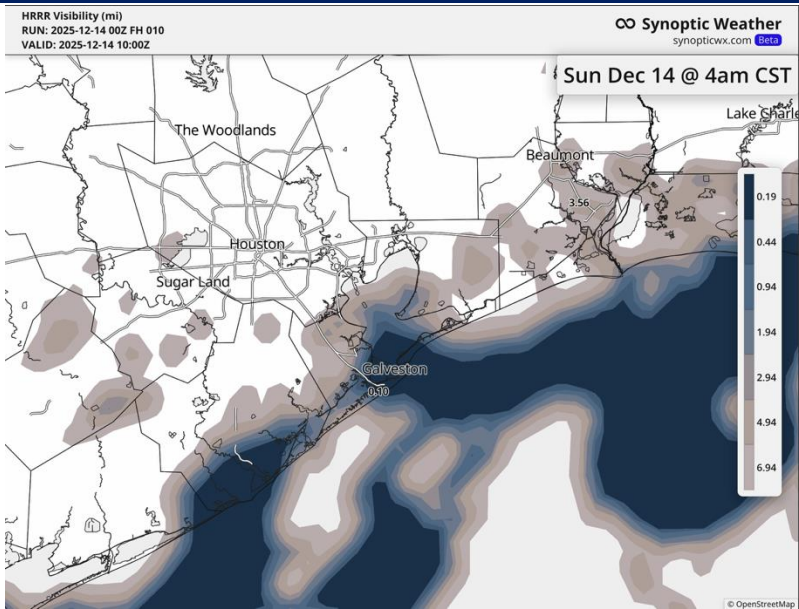
You can also access real-time forecast updates and 24/7 meteorological chat assistance on your **Clarity app.**

Houston Pilots Visibility Report

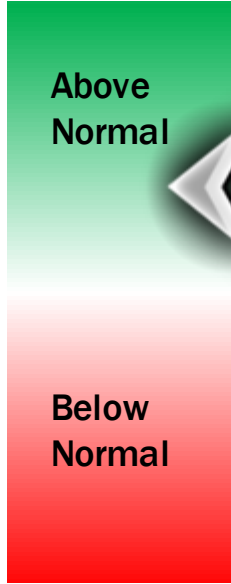
CURRENT VISIBILITY



5 AM CT SUN VISIBILITY



Confidence



TIMEFRAME DISCUSSED

THREAT

NOW – 5 AM SUN

LOW

Patchy fog will be a risk through 5 AM CST this morning. While ALL Stations can see fog patches, locations S of Morgan's Point are more likely to see foggy areas.

Localized visibilities down to <0.5" mile will be possible.

Thunderstorm activity in the 4 AM – 5 AM hour is expected to quickly dissipate any patches of fog. Clear conditions will prevail beyond 5 AM.

Houston Pilots Extended Range Visibility Report



Wednesday 12/17/2025

Fog conditions not favored for Wednesday.

Forecast Confidence



Friday 12/19/2025

Fog conditions not favored for Friday.

Forecast Confidence



Thursday 12/18/2025

Fog possible N of Morgan’s Point from 3 AM – 9 AM. Fog appears possible from 9 PM – 12 AM as well, but confidence at this range is very low.

Forecast Confidence



Chance for Fog

Wednesday AM	Unlikely
Wednesday PM	Unlikely
Thursday AM	Possible
Thursday PM	Possible
Friday AM	Unlikely
Friday PM	Unlikely

Houston Pilots Visibility Chart (miles)



Visibility	Sun 2 am	Sun 3 am	Sun 4 am	Sun 5 am	Sun 6 am	Sun 7 am	Sun 8 am	Sun 9 am	Sun 10 am	Sun 11 am	Sun 12 pm	Sun 1 pm	Sun 2 pm	Sun 3 pm	Sun 4 pm	Sun 5 pm	Sun 6 pm	Sun 7 pm	Sun 8 pm	Sun 9 pm	Sun 10 pm	Sun 11 pm	Mon 12 am	Mon 1 am
Houston Pilots N - 610 Bridge	5.9	5.9	6.9	9	10	10	10	10	10	10	10	10	10	10	10	10	10	10	10	10	10	10	10	10
Houston Pilots M - Kinder 1	5.9	5.9	6.9	7.9	10	10	10	10	10	10	10	10	10	10	10	10	10	10	10	10	10	10	10	10
Houston Pilots L - Greens Bayou	2	4.9	4.9	7.9	10	10	10	10	10	10	10	10	10	10	10	10	10	10	10	10	10	10	10	10
Houston Pilots K - Shell Crude	2.5	4.4	5.4	7.9	9	10	10	10	10	10	10	10	10	10	10	10	10	10	10	10	10	10	10	10
Houston Pilots J - Lynchburg Ferries	1.3	2.5	5.4	7.9	10	10	10	10	10	10	10	10	10	10	10	10	10	10	10	10	10	10	10	10
Houston Pilots I - Exxon 3	0.8	0.7	5.4	7.9	9	10	10	10	10	10	10	10	10	10	10	10	10	10	10	10	10	10	10	10
Houston Pilots H - Morgans Point	0.8	0.7	2.1	7.9	9	10	10	10	10	10	10	10	10	10	10	10	10	10	10	10	10	10	10	10
Houston Pilots G - 75/76	1	0.7	0.8	4.9	6.9	7.9	7.9	7.9	8	10	10	10	10	10	10	10	10	10	10	10	10	10	10	10
Houston Pilots F - 63/64	1	0.7	0.8	1.1	6.9	7.9	7.9	6.9	8	10	10	10	10	10	10	10	10	10	10	10	10	10	10	10
Houston Pilots E - 51/52	1	0.7	0.8	0.5	6.9	6.9	6.9	6.9	6.9	9	10	10	10	10	10	10	10	10	10	10	10	10	10	10
Houston Pilots D - 37/38	1	0.7	0.8	0.5	6.9	6.9	6.9	6.9	6.9	9	10	10	10	10	10	10	10	10	10	10	10	10	10	10
Houston Pilots C - 25/26	0.8	0.7	0.8	0.5	6.9	6.9	6.9	5.9	6.9	9	10	10	10	10	10	10	10	10	10	10	10	10	10	10
Houston Pilots B - 11/12	0.8	0.7	0.8	0.3	6.9	6.9	6.9	5.9	6.9	9	10	10	10	10	10	10	10	10	10	10	10	10	10	10
Houston Pilots A - 1 & 2 Bravo	0.8	0.7	0.8	0.3	3.9	4.9	5.9	4.9	5.9	6.9	6.9	7.9	9	10	10	10	10	10	10	10	10	10	10	10

NOTE: This is automated data that may/may not agree with the official BAM thinking that's found on the daily slides or special visibility report slides. This data should be used as a guide only

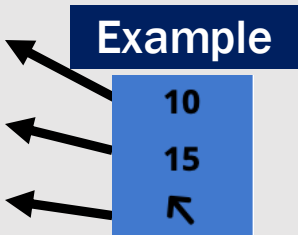
Houston Pilots Wind Chart



Forecast Confidence



Sustained Wind 10 Knots
Gusts 15 Knots
Wind from the SE



Wind	Sun 2 am	Sun 3 am	Sun 4 am	Sun 5 am	Sun 6 am	Sun 7 am	Sun 8 am	Sun 9 am	Sun 10 am	Sun 11 am	Sun 12 pm	Sun 1 pm	Sun 2 pm	Sun 3 pm	Sun 4 pm	Sun 5 pm	Sun 6 pm	Sun 7 pm	Sun 8 pm	Sun 9 pm	Sun 10 pm	Sun 11 pm	Mon 12 am	Mon 1 am
Houston Pilots N - 610 Bridge	3	6	8	10	13	14	15	15	15	16	16	15	15	15	14	15	13	12	12	12	12	10	9	8
	8	10	15	18	22	24	26	26	28	29	30	28	29	29	28	26	24	22	22	22	21	20	18	17
	↓	↓	↓	↓	↓	↓	↓	↓	↓	↓	↓	↓	↓	↓	↓	↓	↓	↓	↓	↓	↓	↓	↓	↓
Houston Pilots M - Kinder 1	3	6	8	10	13	14	15	15	15	15	16	15	15	15	14	14	13	12	12	12	12	10	9	8
	8	10	15	18	22	24	26	26	26	29	29	28	29	29	28	26	24	22	23	22	21	20	18	17
	↓	↓	↓	↓	↓	↓	↓	↓	↓	↓	↓	↓	↓	↓	↓	↓	↓	↓	↓	↓	↓	↓	↓	↓
Houston Pilots L - Greens Bayou	3	6	8	10	13	14	15	15	15	16	16	15	15	15	15	15	13	12	12	12	12	10	9	8
	8	10	15	18	23	25	26	26	26	28	29	28	28	29	28	26	24	23	23	22	21	21	20	17
	↓	↓	↓	↓	↓	↓	↓	↓	↓	↓	↓	↓	↓	↓	↓	↓	↓	↓	↓	↓	↓	↓	↓	↓
Houston Pilots K - Shell Crude	3	5	7	10	13	14	15	15	15	16	15	15	15	15	15	15	13	12	13	12	12	10	10	9
	8	10	15	18	23	25	28	26	26	28	28	28	28	29	28	26	25	23	23	23	22	21	20	17
	↓	↓	↓	↓	↓	↓	↓	↓	↓	↓	↓	↓	↓	↓	↓	↓	↓	↓	↓	↓	↓	↓	↓	↓
Houston Pilots J - Lynchburg Ferries	3	5	7	9	12	13	15	15	15	15	16	15	17	16	16	15	14	12	12	12	10	10	9	8
	7	10	15	18	23	26	28	26	26	26	28	26	28	29	28	26	25	24	24	23	22	21	20	17
	↓	↓	↓	↓	↓	↓	↓	↓	↓	↓	↓	↓	↓	↓	↓	↓	↓	↓	↓	↓	↓	↓	↓	↓
Houston Pilots I - Exxon 3	6	8	10	15	17	20	20	20	18	18	17	17	17	18	18	18	17	17	17	17	17	17	15	15
	9	12	16	21	25	28	29	28	26	26	28	26	28	29	28	26	26	24	24	25	25	24	22	21
	↓	↓	↓	↓	↓	↓	↓	↓	↓	↓	↓	↓	↓	↓	↓	↓	↓	↓	↓	↓	↓	↓	↓	↓
Houston Pilots H - Morgans Point	6	8	10	13	16	18	20	20	18	18	17	17	18	18	18	18	18	17	17	17	17	17	16	15
	8	10	15	18	24	26	28	28	28	28	28	28	28	29	29	26	28	25	25	25	25	24	23	21
	↓	↓	↓	↓	↓	↓	↓	↓	↓	↓	↓	↓	↓	↓	↓	↓	↓	↓	↓	↓	↓	↓	↓	↓
Houston Pilots G - 75/76	6	8	10	15	18	22	22	22	22	21	21	20	21	21	21	21	20	20	20	21	20	20	20	17
	8	12	16	21	26	30	32	32	32	31	31	30	31	31	30	30	29	28	29	30	29	29	28	26
	↓	↓	↓	↓	↓	↓	↓	↓	↓	↓	↓	↓	↓	↓	↓	↓	↓	↓	↓	↓	↓	↓	↓	↓
Houston Pilots F - 63/64	6	8	10	15	18	22	23	23	22	22	21	20	21	22	21	21	20	20	21	22	21	20	20	18
	8	10	15	21	26	30	32	33	32	32	31	30	31	31	30	30	29	28	30	31	29	29	26	26
	↓	↓	↓	↓	↓	↓	↓	↓	↓	↓	↓	↓	↓	↓	↓	↓	↓	↓	↓	↓	↓	↓	↓	↓
Houston Pilots E - 51/52	5	7	9	13	17	21	22	24	23	22	21	20	22	22	22	22	22	22	22	22	22	21	20	20
	8	9	14	18	25	30	32	35	33	32	31	30	31	32	32	32	31	32	32	32	31	30	29	26
	↓	↓	↓	↓	↓	↓	↓	↓	↓	↓	↓	↓	↓	↓	↓	↓	↓	↓	↓	↓	↓	↓	↓	↓
Houston Pilots D - 37/38	5	7	9	13	17	21	22	24	23	22	22	21	22	22	22	22	22	23	24	23	22	22	21	20
	7	9	13	18	25	29	32	35	33	32	32	30	32	32	31	32	32	33	35	33	31	31	29	28
	↓	↓	↓	↓	↓	↓	↓	↓	↓	↓	↓	↓	↓	↓	↓	↓	↓	↓	↓	↓	↓	↓	↓	↓
Houston Pilots C - 25/26	5	6	8	13	16	20	22	23	23	22	22	21	22	22	22	22	22	22	22	23	22	21	20	18
	7	9	12	17	23	29	31	33	32	32	31	31	32	32	31	32	32	32	33	32	31	30	29	26
	↓	↓	↓	↓	↓	↓	↓	↓	↓	↓	↓	↓	↓	↓	↓	↓	↓	↓	↓	↓	↓	↓	↓	↓
Houston Pilots B - 11/12	3	6	8	10	14	17	20	21	22	21	21	20	21	22	21	22	21	20	21	21	20	20	18	17
	7	9	12	17	22	26	29	30	31	32	31	30	31	31	29	31	30	30	31	31	29	29	28	25
	↓	↓	↓	↓	↓	↓	↓	↓	↓	↓	↓	↓	↓	↓	↓	↓	↓	↓	↓	↓	↓	↓	↓	↓
Houston Pilots A - 1 & 2 Bravo	5	6	8	13	15	20	22	23	24	24	24	24	24	24	24	24	22	22	24	24	24	23	22	20
	8	9	12	17	23	28	30	33	35	35	35	35	36	36	33	35	32	32	35	35	33	32	31	29
	↓	↓	↓	↓	↓	↓	↓	↓	↓	↓	↓	↓	↓	↓	↓	↓	↓	↓	↓	↓	↓	↓	↓	↓

NOTE: This is automated data that may/may not agree with the official BAM thinking that's found on the daily slides.
This data should be used as a guide only.

Houston Pilots: SUN. 12/14/2025

Forecast Discussion

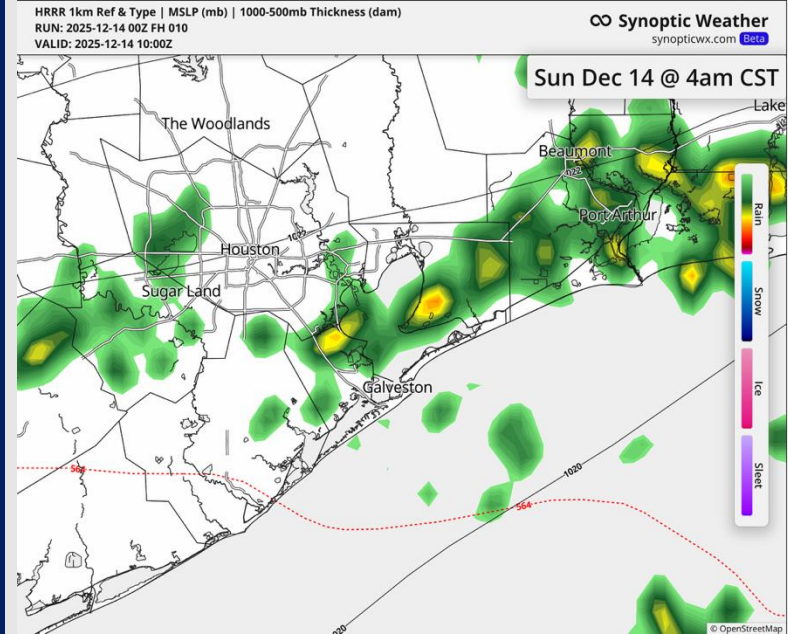
Precip: A few thunderstorms around 4 AM, with dry conditions after storms exit at 5 AM. Any storms this AM will be capable of lightning.

Wind: Winds out of the NNE through the day. **N of Morgan's Point:** Winds of 12 – 17 kts from 3 AM through 3 PM, decreasing to 7 – 12 kts through 7 PM, and finally 3 – 8 kts through midnight. **S of Morgan's Point:** Winds of 23 – 28 kts from 3 AM – 3 PM, decreasing to 18 – 23 kts through midnight. **Gusts of 28 – 33 kts N of Morgan's Point through 12 PM, decreasing to 20 – 25 kts through the rest of the day. Gusts of 30 – 35 kts S of Morgan's Point through 11 AM, decreasing 24 – 29 kts through the remainder of the day.**

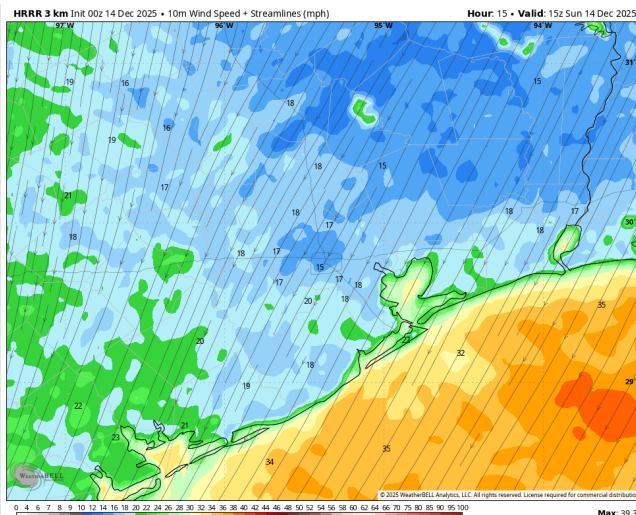
High Temps: **N of Morgan's Point:** Mid 60s F. **S of Morgan's Point:** Low 60s F.

Visibility: Patchy fog will be in play for all stations (particularly S of Morgan's Point) through 5 AM. Scattered storms will likely dissipate fog as they work through from 4 AM – 5 AM. Clear thereafter.

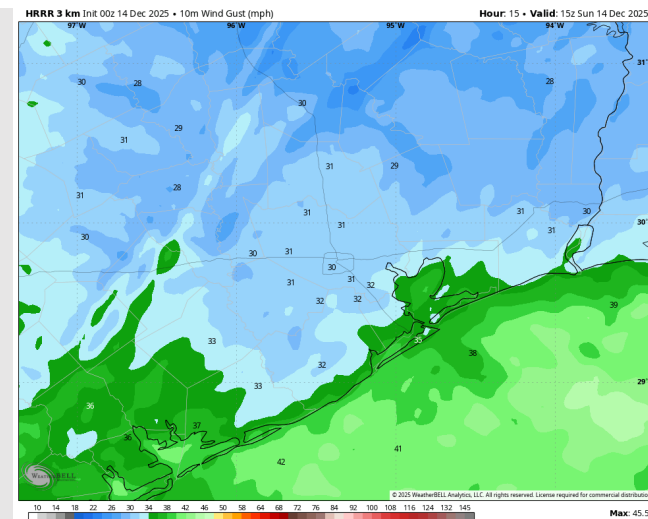
Precip Image: 4 AM CT



Wind Speed:
9 AM CT



MAX GUSTS
9 AM CT



Houston Pilots: MON. 12/15/2025

Forecast Discussion

Precip: Dry conditions favored for Monday.

Wind: Winds out of the NE through 4 PM, turning clockwise to out of the southeast from 4 PM through 12 AM. **N of Morgan's Point:** Winds of 5 – 10 kts through the day. **S of Morgan's Point:** Winds of 18 – 23 kts through 4 AM, decreasing to 13 – 18 kts through 10 AM, then decreasing again to 5 – 10 kts for the remainder of the day. Winds at the Boarding Station can maintain winds of 10 – 15 kts from 10 AM through 1 PM. **Gusts of 20 – 25 kts through 4 AM, becoming negligible after that.**

High Temps: **N of Morgan's Point:** Low 50s F. **S of Morgan's Point:** Upper 40s F.

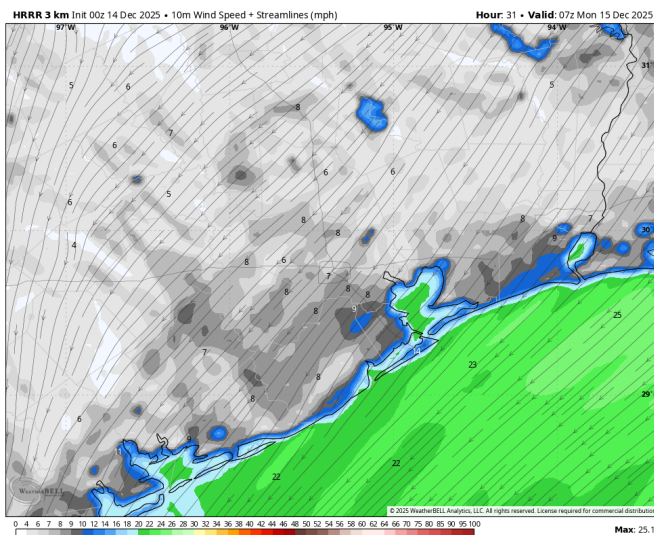
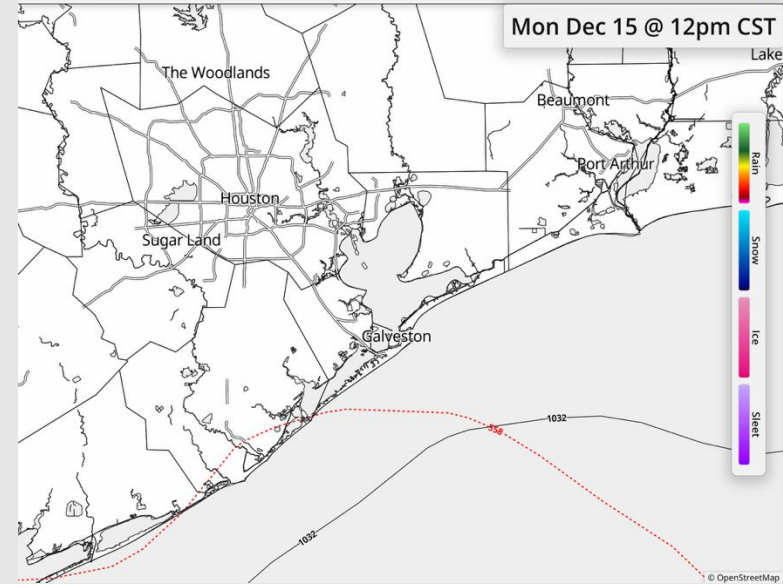
Visibility: No visibility concerns for Monday.

Precip Image: 12 PM CT

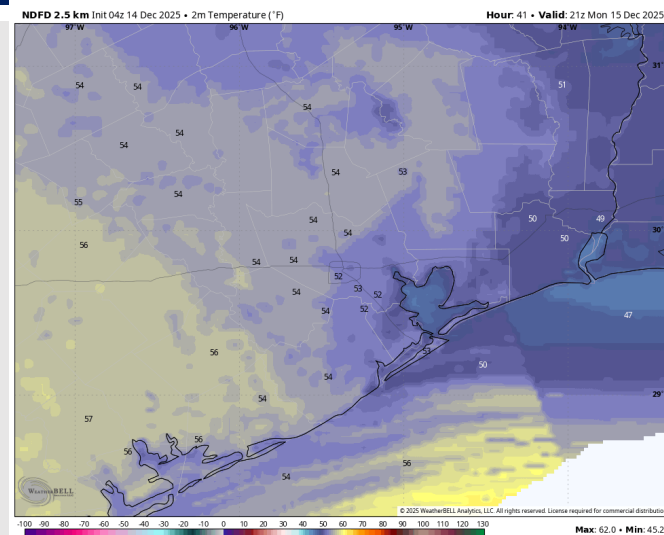
HRRR 1km Ref & Type | MSLP (mb) | 1000-500mb Thickness (dam)
RUN: 2025-12-14 00Z FH 04Z
VALID: 2025-12-15 18:00Z

∞ Synoptic Weather
synopticwx.com [Beta](#)

Mon Dec 15 @ 12pm CST



Wind Speed:
1 AM CT



High Temps
MON

Houston Pilots: TUE. 12/16/2025

Forecast Discussion

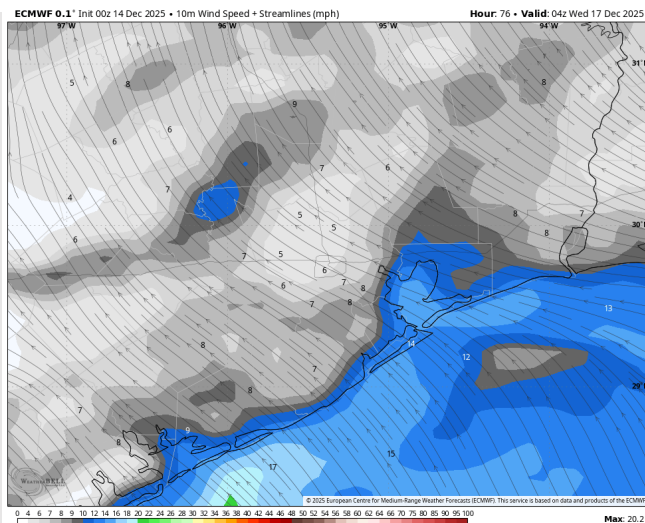
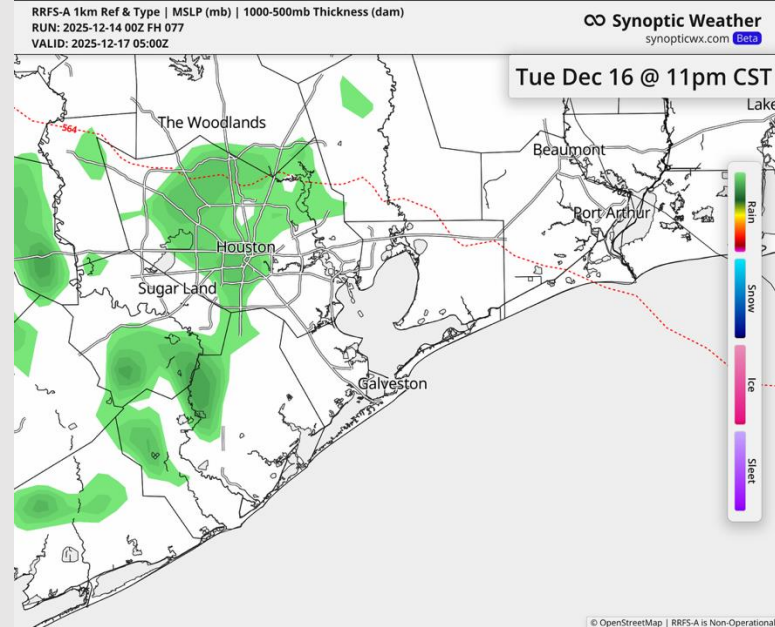
Precip: Dry conditions favored through 9 PM, with isolated showers in play from 8 PM – 12 AM.

Wind: Winds out of the SE through 4 AM, turning counterclockwise to out of the E through 2 PM, then back out of the SE through 12 AM. **N of Morgan's Point:** Winds of 4 – 9 kts through the day. **S of Morgan's Point:** Winds of 6 – 11 kts through 5 PM, increasing slightly to 8 – 13 kts through midnight. **A few gusts to 20 kts S of Morgan's Point after 5 PM.**

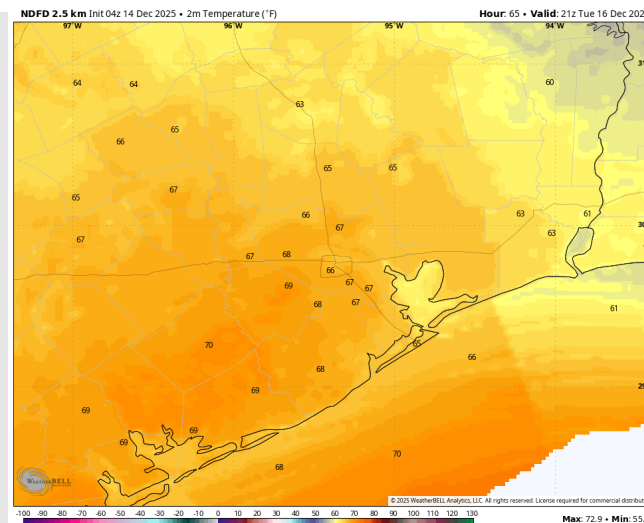
High Temps: **N of Morgan's Point:** Upper 60s F. **S of Morgan's Point:** Low 60s F.

Visibility: A very low-end risk for isolated fog patches from 5 AM – 8 AM between Morgan's Point and the Boarding Station.

Precip Image: 11 PM CT



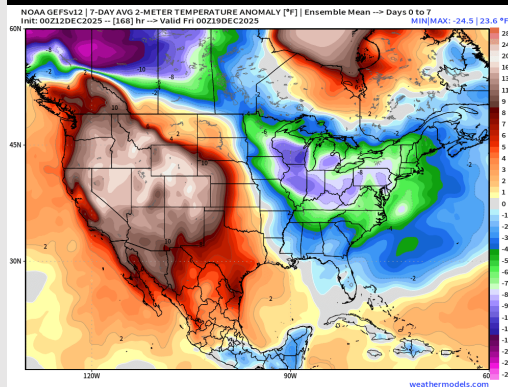
Wind Speed:
10 PM CT



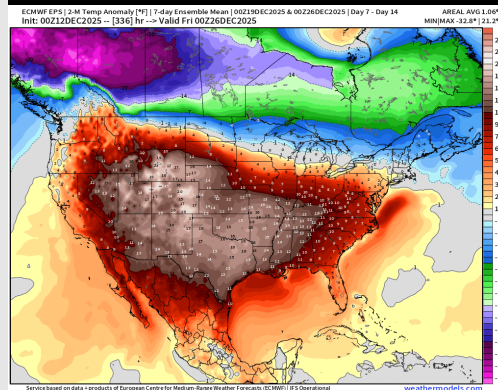
High Temps
TUES

Houston Pilots: 12/14/25

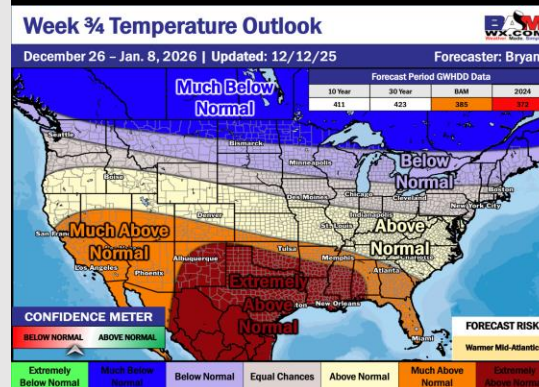
Next 7 Day Temperature Departure



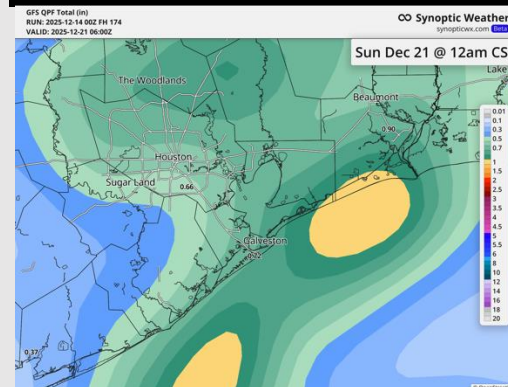
8-14 Day Temperature Departure



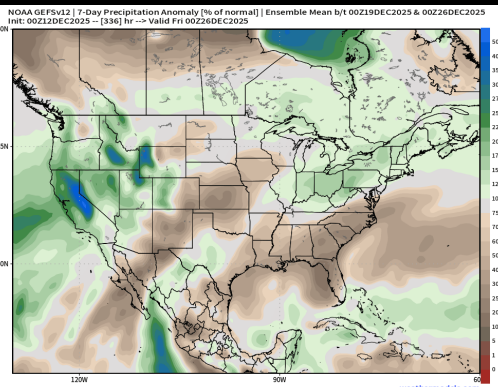
15-30 Day Temperature Departure



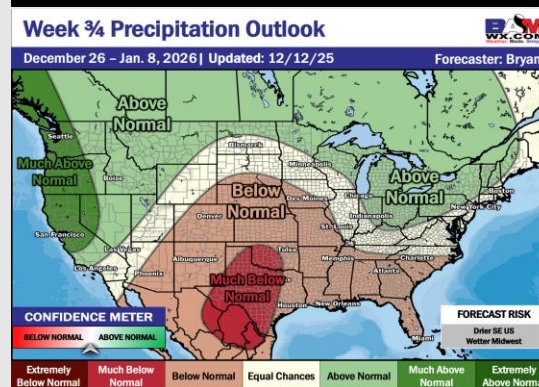
Next 7 Day Total Precipitation



8-14 Day % of Average Precip.



15-30 Day % of Average Precip.



- Above average temps are favored over the next 7 days, with next rain chances around Wednesday.
- Above normal temperatures and below normal rainfall favored in the Week 2 timeframe.
- Extremely above normal temperatures and below normal rainfall expected the last week of December/first week of January.