

Houston Pilots Forecast Package



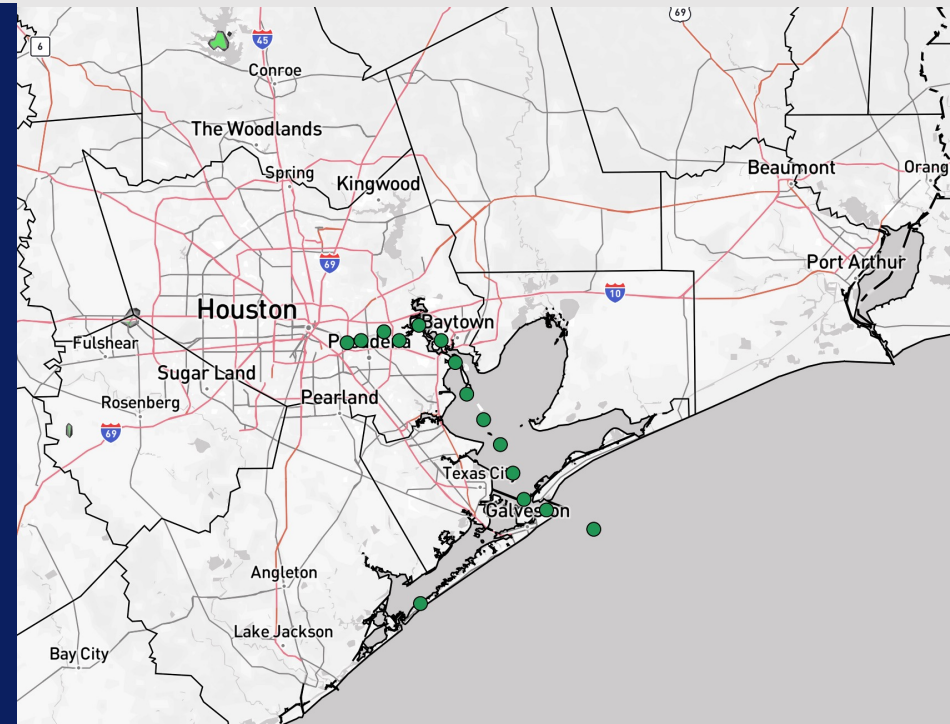
Updated: 5:30 AM CT

Friday, November 21, 2025

Forecaster: Kleitsch/Lang

Weather Headlines

- **Patchy fog will be in play now – 11AM this morning for Stations N of 51/52.**
- **Scattered shower/storm chances will move in this PM and linger through early SAT AM.**
- **Gusts up to 35 kts and lightning possible with storms from 4PM to 10PM today.**



Current Radar: 5:25 AM CT

As always, please do not hesitate to reach out to us with any forecast questions at [\(317\)-560-8122](tel:317-560-8122). Press 1 for forecast questions.



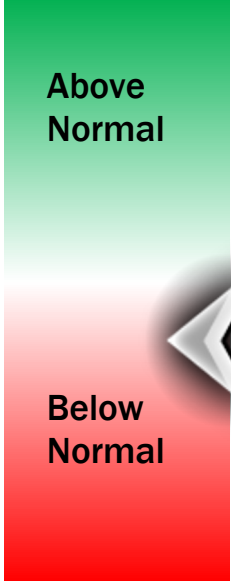
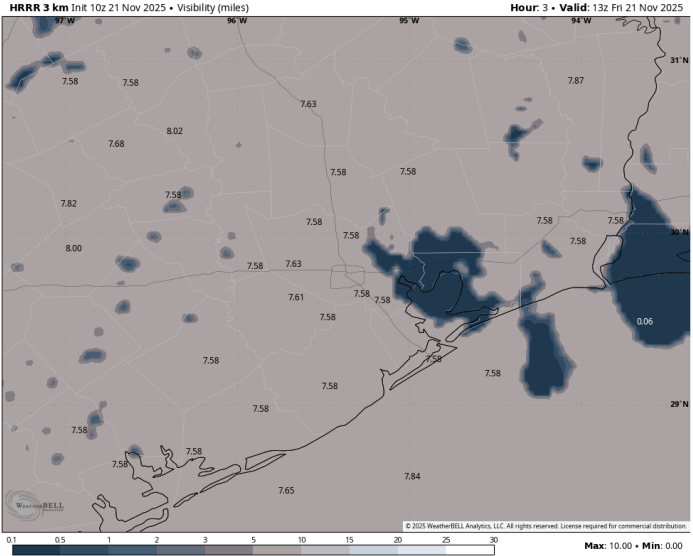
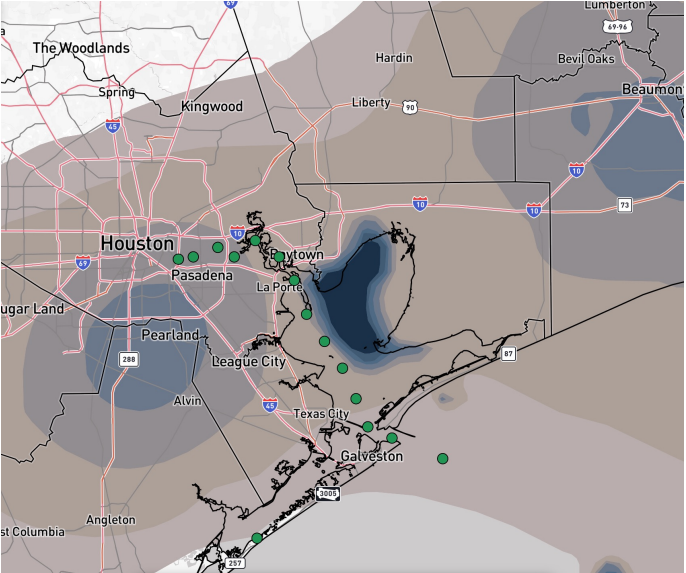
You can also access real-time forecast updates and 24/7 meteorological chat assistance on your [Clarity](#) app.

Houston Pilots Visibility Report



CURRENT Visibility 7 AM CT FRI Visibility

Confidence



Patchy fog is beginning to form **N. of 51/52** and is expected to persist through 10AM. Confidence remains lower on the exact coverage of dense fog formation.

Visibilities of 1 – 2 miles will be possible through 10AM. with pockets of more dense fog, dropping visibilities to less than 1 mile, mainly for N of Morgan’s Point and east of all Stations.

Fog will begin to clear out post 10AM.

TIMEFRAME DISCUSSED	THREAT
CURRENT – 10 AM FRI	Low- Medium

Houston Pilots Extended Range Visibility Report



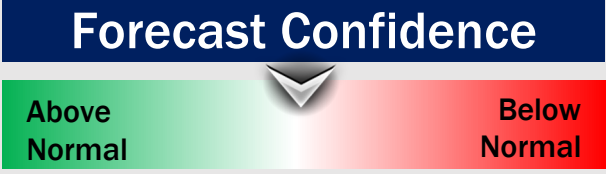
Monday 11/24/25

No fog is favored Monday.



Tuesday 11/25/25

No fog is favored Tuesday.



Wednesday 11/26/25

No fog is favored Wednesday.



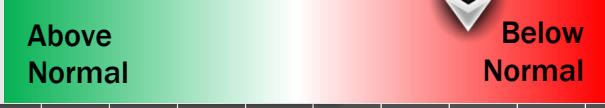
Chance for Fog

Monday AM	Unlikely
Monday PM	Unlikely
Tuesday AM	Unlikely
Tuesday PM	Unlikely
Wednesday AM	Unlikely
Wednesday PM	Unlikely

Houston Pilots Visibility Chart (miles)



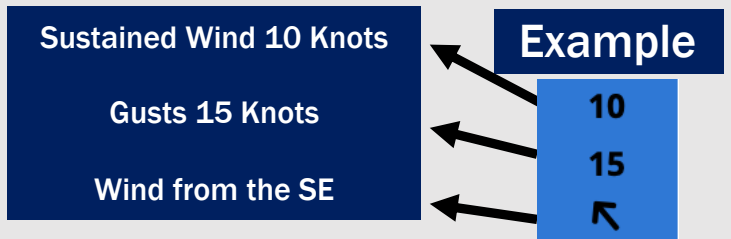
Forecast Confidence



Visibility	Fri 7 am	Fri 8 am	Fri 9 am	Fri 10 am	Fri 11 am	Fri 12 pm	Fri 1 pm	Fri 2 pm	Fri 3 pm	Fri 4 pm	Fri 5 pm	Fri 6 pm	Fri 7 pm	Fri 8 pm	Fri 9 pm	Fri 10 pm	Fri 11 pm	Sat 12 am	Sat 1 am	Sat 2 am	Sat 3 am	Sat 4 am	Sat 5 am	Sat 6 am	
Houston Pilots N - 610 Bridge	3.9	4.9	4.9	9	10	10	10	10	10	10	10	10	10	10	10	10	10	7.9	6.9	6.9	4.9	4.9	3.9	2.9	2.9
Houston Pilots M - Kinder 1	3.9	4.9	5.9	9	10	10	10	10	10	10	10	10	10	10	10	10	10	7.9	6.9	6.9	4.9	4.9	3.9	2.9	2.9
Houston Pilots L - Greens Bayou	2.5	4.9	5.9	10	10	10	10	10	10	10	10	10	10	10	10	10	10	7.9	6.9	6.9	4.9	4.9	3.9	2.9	0.8
Houston Pilots K - Shell Crude	2.5	4.9	5.9	10	10	10	10	10	10	10	10	10	10	10	10	10	10	7.9	6.9	6.9	4.9	4.9	3.9	1.2	0.8
Houston Pilots J - Lynchburg Ferries	2.5	2	5.9	10	10	10	10	10	10	10	10	10	10	10	10	10	10	7.9	6.9	6.9	4.9	4.9	3.9	2.9	2.9
Houston Pilots I - Exxon 3	2.5	2	5.9	10	10	10	10	10	10	10	10	10	10	10	10	10	10	7.9	6.9	6.9	4.9	4.9	3.9	1.2	0.8
Houston Pilots H - Morgans Point	2.5	0.5	2	10	10	10	10	10	10	10	10	10	10	10	10	10	10	7.9	6.9	6.9	4.9	4.9	3.9	0.8	0.8
Houston Pilots G - 75/76	0.5	0.5	0.5	2	1.6	10	10	10	10	10	10	10	10	10	10	10	10	10	10	9	6.9	5.9	4.9	8	7
Houston Pilots F - 63/64	0.5	0.8	0.8	2	1.6	10	10	10	10	10	10	10	10	10	10	10	10	10	10	9	6.9	5.9	4.9	8	7
Houston Pilots E - 51/52	1.6	6.9	9	10	10	10	10	10	10	10	10	10	10	10	10	10	10	10	10	9	6.9	5.9	4.9	8	6
Houston Pilots D - 37/38	6.9	6.9	10	10	10	10	10	10	10	10	10	10	10	10	10	10	10	10	10	9	6.9	5.9	4.9	8	7
Houston Pilots C - 25/26	7.9	10	10	10	10	10	10	10	10	10	10	10	10	10	10	10	10	10	10	9	6.9	5.9	4.9	8	7
Houston Pilots B - 11/12	10	10	10	10	10	10	10	10	10	10	10	10	10	10	10	10	10	10	10	9	6.9	5.9	4.9	8	7
Houston Pilots A - 1 & 2 Bravo	10	10	10	10	10	10	10	10	10	10	10	10	10	10	10	10	10	10	10	7.9	6.9	5.9	4.9	8	8

NOTE: This is automated data that may/may not agree with the official BAM thinking that's found on the daily slides or special visibility report slides. This data should be used as a guide only

Houston Pilots Wind Chart



Wind	Fri 2 am	Fri 3 am	Fri 4 am	Fri 5 am	Fri 6 am	Fri 7 am	Fri 8 am	Fri 9 am	Fri 10 am	Fri 11 am	Fri 12 pm	Fri 1 pm	Fri 2 pm	Fri 3 pm	Fri 4 pm	Fri 5 pm	Fri 6 pm	Fri 7 pm	Fri 8 pm	Fri 9 pm	Fri 10 pm	Fri 11 pm	Sat 12 am	Sat 1 am
Houston Pilots N - 610 Bridge	6 13 ↕	6 12 ↕	5 10 ↕	5 9 ↕	3 8 ↕	3 8 ↕	5 9 ↕	5 10 ↕	6 12 ↕	7 13 ↕	7 14 ↕	7 15 ↕	7 15 ↕	6 14 ↕	6 14 ↕	6 13 ↕	6 10 ↕	5 9 ↕	3 8 ↕	3 8 ↕	3 8 ↕	3 7 ↕	3 7 ↕	3 7 ↕
Houston Pilots M - Kinder 1	6 13 ↕	6 12 ↕	5 10 ↕	5 9 ↕	3 8 ↕	3 8 ↕	5 9 ↕	5 10 ↕	6 12 ↕	7 13 ↕	7 14 ↕	7 15 ↕	7 15 ↕	6 14 ↕	6 13 ↕	6 13 ↕	6 12 ↕	5 9 ↕	3 8 ↕	3 8 ↕	3 8 ↕	3 7 ↕	3 7 ↕	3 7 ↕
Houston Pilots L - Greens Bayou	6 13 ↕	6 12 ↕	5 10 ↕	5 9 ↕	3 8 ↕	3 8 ↕	3 9 ↕	5 10 ↕	6 12 ↕	6 13 ↕	7 14 ↕	7 15 ↕	7 15 ↕	7 14 ↕	6 13 ↕	6 12 ↕	6 12 ↕	5 9 ↕	3 8 ↕	3 8 ↕	3 8 ↕	3 7 ↕	3 7 ↕	3 7 ↕
Houston Pilots K - Shell Crude	6 13 ↕	5 12 ↕	5 10 ↕	3 9 ↕	3 8 ↕	3 8 ↕	3 9 ↕	5 10 ↕	6 12 ↕	6 13 ↕	7 14 ↕	7 15 ↕	7 15 ↕	7 14 ↕	7 14 ↕	6 13 ↕	6 12 ↕	6 9 ↕	5 8 ↕	3 8 ↕	3 8 ↕	3 7 ↕	3 7 ↕	3 7 ↕
Houston Pilots J - Lynchburg Ferries	6 12 ↕	5 12 ↕	5 10 ↕	3 9 ↕	3 8 ↕	3 8 ↕	3 9 ↕	3 9 ↕	5 10 ↕	6 13 ↕	6 13 ↕	7 14 ↕	7 14 ↕	6 14 ↕	6 14 ↕	6 13 ↕	6 12 ↕	5 9 ↕	3 8 ↕	3 8 ↕	3 8 ↕	3 7 ↕	3 7 ↕	3 7 ↕
Houston Pilots I - Exxon 3	10 15 ↕	8 14 ↕	8 12 ↕	8 10 ↕	7 10 ↕	6 9 ↕	6 10 ↕	6 10 ↕	7 12 ↕	8 13 ↕	8 14 ↕	8 15 ↕	8 15 ↕	8 16 ↕	9 15 ↕	8 14 ↕	8 14 ↕	8 12 ↕	8 10 ↕	7 9 ↕	7 9 ↕	6 9 ↕	6 9 ↕	6 9 ↕
Houston Pilots H - Morgans Point	9 14 ↕	8 13 ↕	8 12 ↕	7 10 ↕	6 10 ↕	6 10 ↕	6 10 ↕	6 10 ↕	7 12 ↕	8 13 ↕	8 13 ↕	8 15 ↕	8 15 ↕	8 16 ↕	9 16 ↕	9 14 ↕	8 14 ↕	8 12 ↕	7 10 ↕	7 9 ↕	7 9 ↕	6 9 ↕	6 9 ↕	6 9 ↕
Houston Pilots G - 75/76	10 15 ↕	9 14 ↕	9 13 ↕	8 13 ↕	8 10 ↕	7 10 ↕	7 10 ↕	7 12 ↕	8 12 ↕	8 13 ↕	8 14 ↕	8 15 ↕	8 15 ↕	8 16 ↕	9 16 ↕	9 15 ↕	9 15 ↕	8 13 ↕	8 12 ↕	8 12 ↕	8 10 ↕	7 10 ↕	7 10 ↕	7 9 ↕
Houston Pilots F - 63/64	10 15 ↕	9 14 ↕	8 13 ↕	8 13 ↕	8 12 ↕	7 10 ↕	7 10 ↕	7 12 ↕	8 12 ↕	8 13 ↕	8 14 ↕	8 15 ↕	8 15 ↕	8 16 ↕	9 16 ↕	9 15 ↕	8 14 ↕	8 13 ↕	8 12 ↕	8 10 ↕	7 10 ↕	7 10 ↕	7 9 ↕	6 9 ↕
Houston Pilots E - 51/52	9 15 ↕	9 14 ↕	8 13 ↕	8 12 ↕	8 10 ↕	7 10 ↕	7 10 ↕	7 12 ↕	8 12 ↕	8 13 ↕	8 14 ↕	8 15 ↕	8 15 ↕	8 16 ↕	9 16 ↕	9 15 ↕	8 14 ↕	8 13 ↕	8 12 ↕	7 10 ↕	7 10 ↕	7 10 ↕	6 9 ↕	6 9 ↕
Houston Pilots D - 37/38	9 15 ↕	9 14 ↕	8 13 ↕	8 12 ↕	8 10 ↕	7 10 ↕	7 10 ↕	7 12 ↕	8 12 ↕	8 13 ↕	8 14 ↕	8 15 ↕	8 15 ↕	8 16 ↕	9 16 ↕	9 15 ↕	8 14 ↕	8 13 ↕	8 12 ↕	7 10 ↕	7 10 ↕	7 10 ↕	6 9 ↕	6 9 ↕
Houston Pilots C - 25/26	9 15 ↕	8 14 ↕	8 13 ↕	8 12 ↕	7 10 ↕	7 10 ↕	7 12 ↕	7 13 ↕	8 13 ↕	8 14 ↕	8 15 ↕	8 15 ↕	8 15 ↕	8 15 ↕	8 15 ↕	8 14 ↕	8 14 ↕	8 13 ↕	7 12 ↕	7 10 ↕	7 10 ↕	6 9 ↕	6 9 ↕	6 9 ↕
Houston Pilots B - 11/12	8 14 ↕	8 13 ↕	7 12 ↕	7 12 ↕	7 10 ↕	6 10 ↕	7 12 ↕	7 12 ↕	7 13 ↕	8 13 ↕	8 13 ↕	8 15 ↕	8 15 ↕	8 15 ↕	8 15 ↕	8 14 ↕	8 14 ↕	7 12 ↕	6 10 ↕	6 10 ↕	6 10 ↕	6 9 ↕	6 9 ↕	6 9 ↕
Houston Pilots A - 1 & 2 Bravo	10 15 ↕	9 14 ↕	8 13 ↕	8 13 ↕	8 12 ↕	8 12 ↕	8 13 ↕	8 13 ↕	8 14 ↕	8 13 ↕	8 14 ↕	7 14 ↕	7 14 ↕	7 14 ↕	8 14 ↕	8 14 ↕	8 14 ↕	8 13 ↕	8 12 ↕	8 12 ↕	7 12 ↕	7 10 ↕	7 10 ↕	7 10 ↕

NOTE: This is automated data that may/may not agree with the official BAM thinking that's found on the daily slides. This data should be used as a guide only.

Houston Pilots: FRI. 11/21/2025



Forecast Discussion

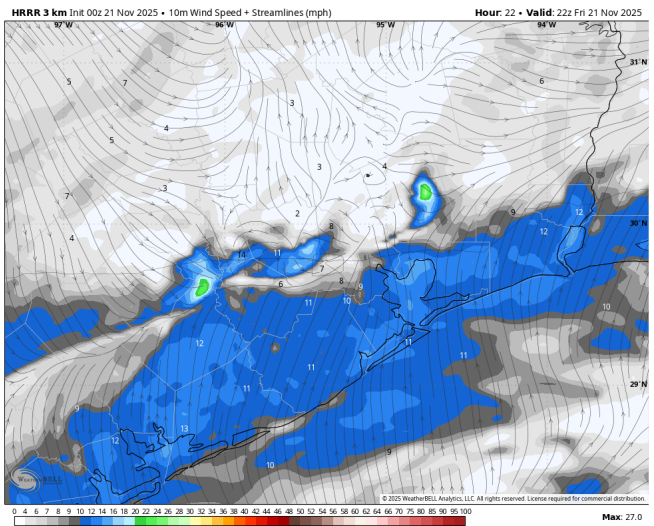
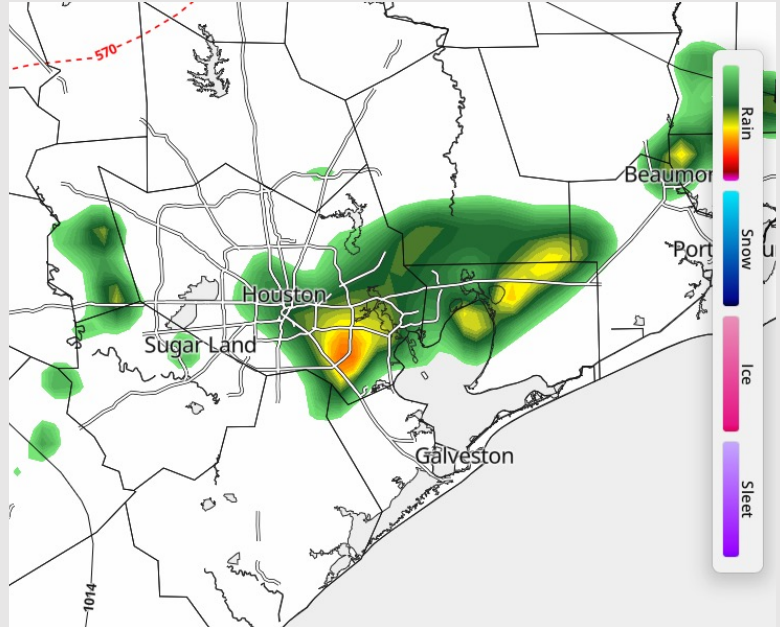
Precip: Scattered rain and storm chances will be in play for all Stations from 4PM to 10PM. Greatest coverage will be N of Morgan's Point. **Risks** will be lightning and wind gusts up to 35 kts from 4PM-10PM.

Wind: Winds will generally be out of the S. **N of Morgan's Point:** Winds will be at 3 – 8 kts. **S of Morgan's Point:** Winds will be at 5 – 8 kts through 2PM, increasing to 8 – 13 kts after then.

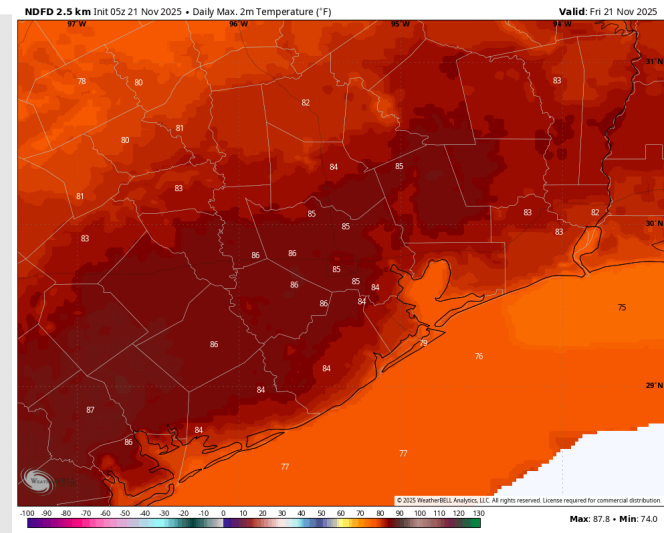
High Temps: **N of Morgan's Point:** Mid 80s F. **S of Morgan's Point:** Upper 70s F.

Visibility: Patchy fog will be possible from 3AM to 11AM. Confidence currently remains lower than normal for the onset timing of dense fog. See visibility slide for additional info on this.

Precip Image: 6 PM CT



Wind Speed:
4 PM CT



High Temps
FRI

Houston Pilots: SAT. 11/22/2025



Forecast Discussion

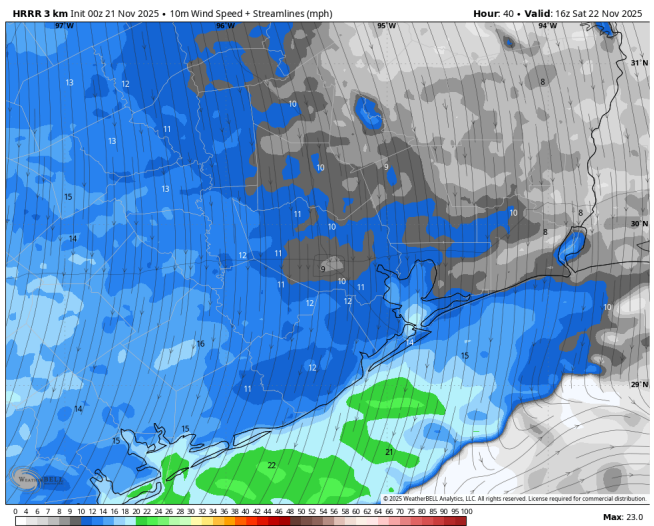
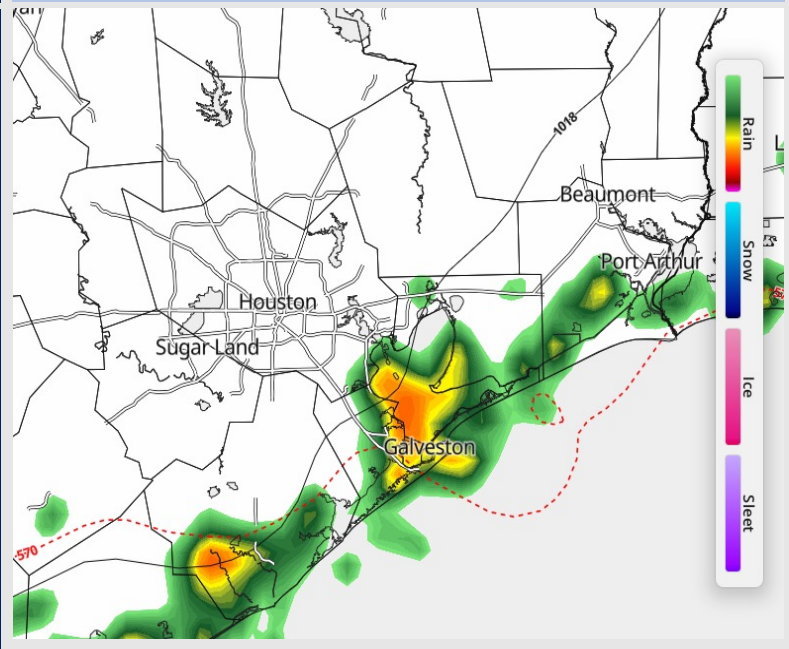
Precip: A line of showers and a few heavy downpours will be possible from 2AM to 8AM for all Stations.

Wind: Winds will gradually shift clockwise out of the SW to out of the N from 12AM – 6AM as a front slowly pushes out to sea. Winds to remain out of the N for the remainder of the day. **N of Morgan's Point:** Winds of 4 – 8 kts. **S of Morgan's Point:** Winds will be at 4 – 9 kts, increasing to 10 – 15 kts after 7AM. **Gusts up to 23 kts will be possible at all Stations from 6AM to 1PM.**

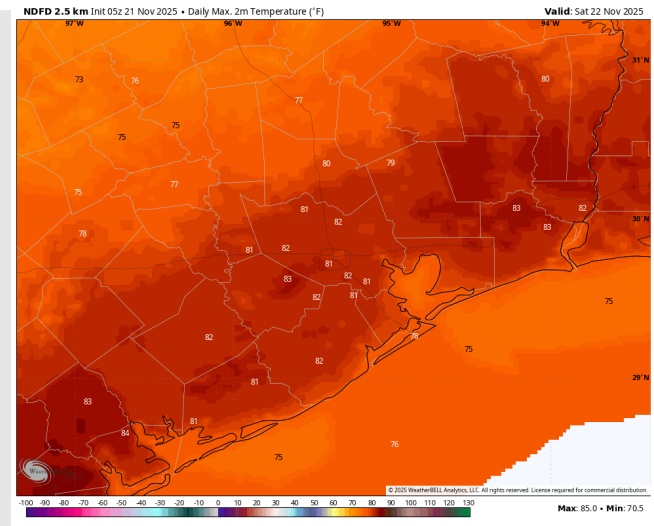
High Temps: **N of Morgan's Point:** Lower 80s F. **S of Morgan's Point:** Mid 70s F.

Visibility: No fog is favored Saturday.

Precip Image: 4 AM CT



Wind Speed:
10 AM CT



High Temps
SAT

Houston Pilots: SUN. 11/23/2025

Forecast Discussion

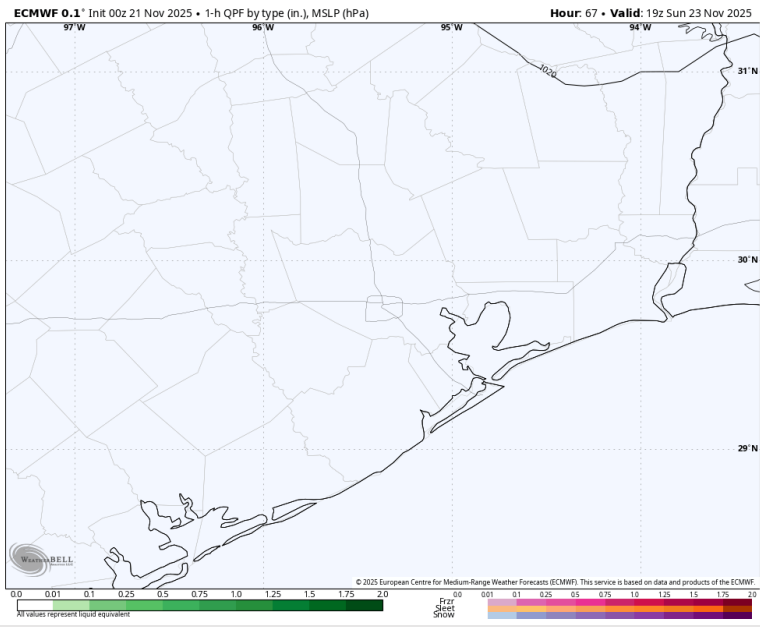
Precip: Favoring dry conditions.

Wind: Winds will be out of the N/NE, rotating to be out of the ESE after 3PM. **N of Morgan's Point:** Winds will be at 2 – 7 kts. **S of Morgan's Point:** Winds will be at 8 – 13 kts. **Sporadic wind gusts up to 20 kts will be possible S of Morgan's Point after 4AM.**

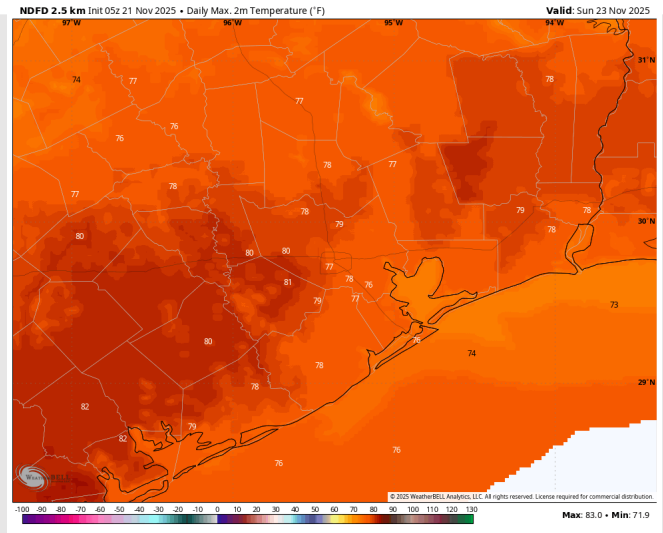
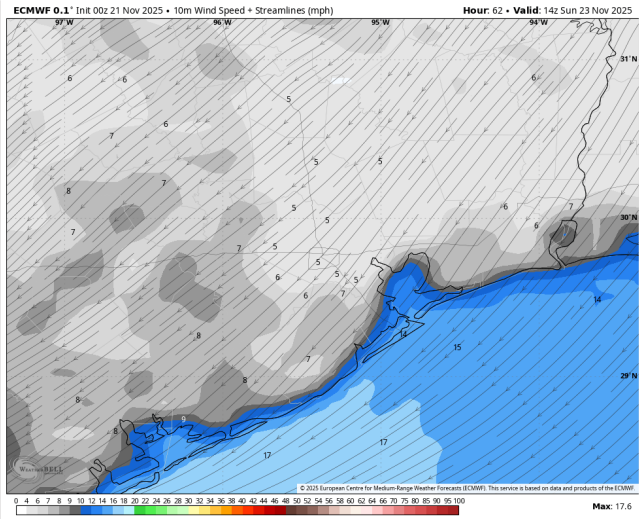
High Temps: **N of Morgan's Point:** Mid 70s F. **S of Morgan's Point:** Mid 70s F.

Visibility: No fog concerns Sunday.

Precip Image: 1 PM CT

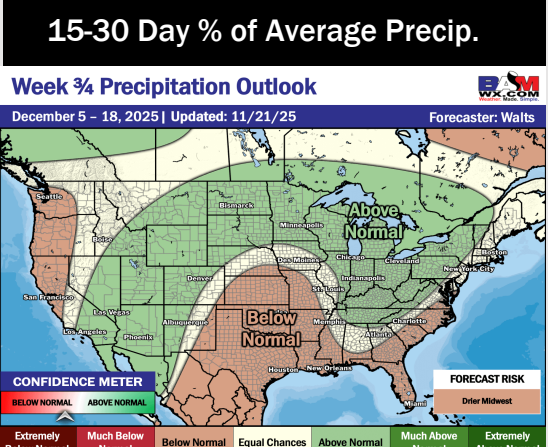
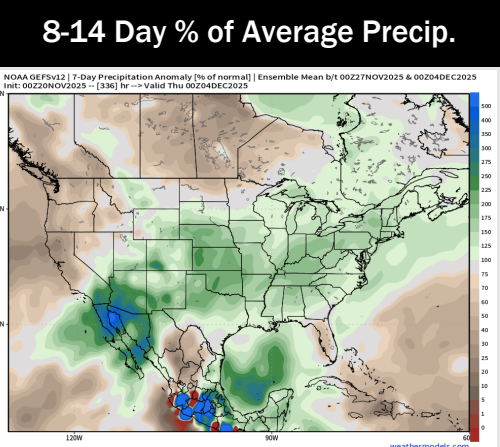
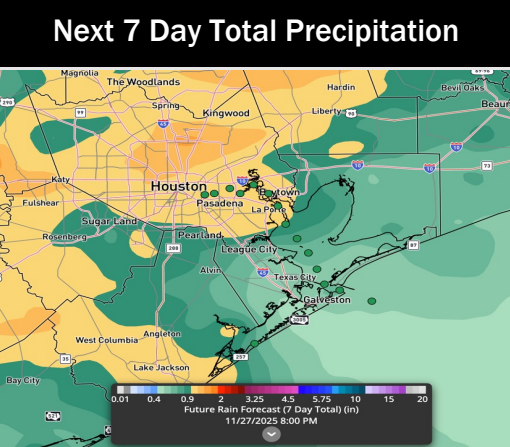
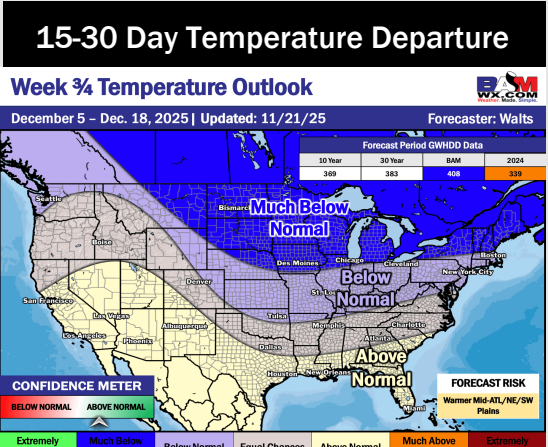
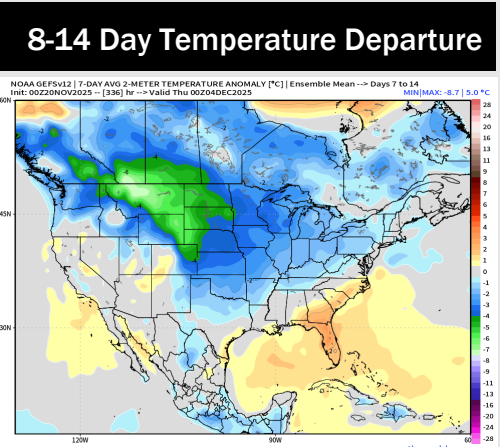
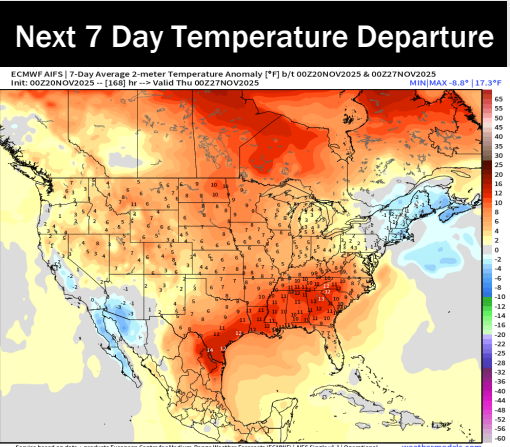


Wind Speed:
8 AM CT



High Temps
Sunday

Houston Pilots: 11/21/25



- Above normal temperatures and scattered rain chances throughout the week.
- Seasonable to below normal temperatures are favored into mid-end of Week 2.
- Above normal rain chances will also be in play due to several, stronger fronts that will push in during this time period.