

# Houston Pilots Forecast Package



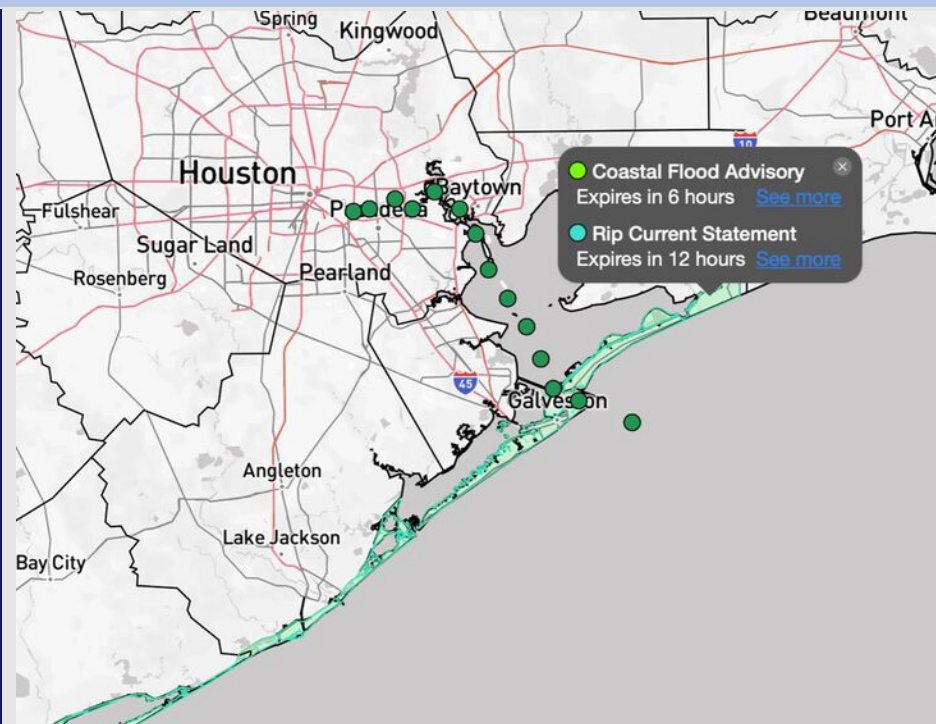
Updated: 9:00 PM CT

Sunday, October 5, 2025

Forecaster: Hope Kleitsch

## Weather Headlines

- Showers and storms will be possible at times over the next 72 hours.
- Waves are expected to reach 3 – 4' at the Boarding Station through 1PM Monday.
- No fog concerns over the next 72 hours.



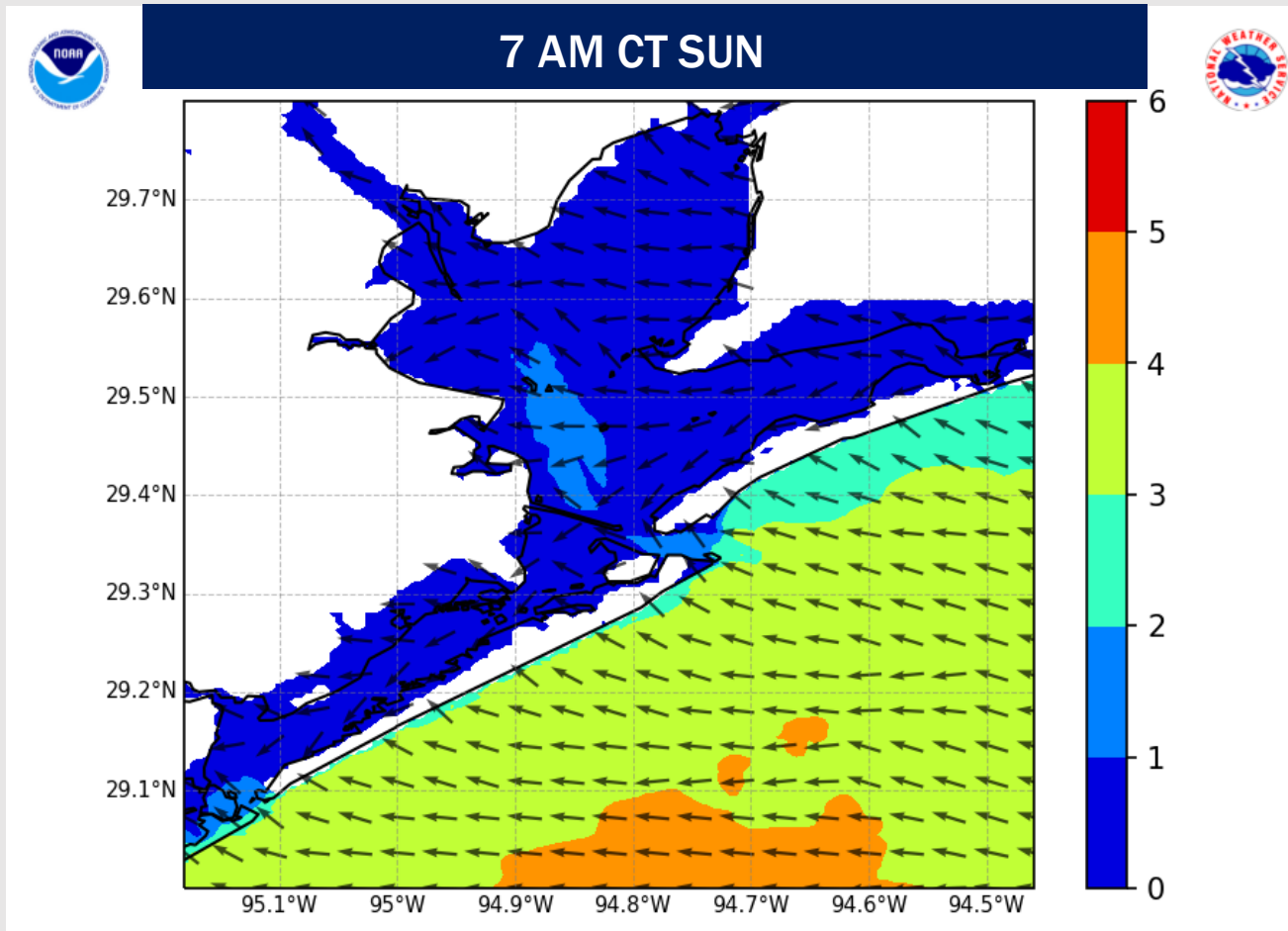
Current Radar: 1:15 PM CT

As always, please do not hesitate to reach out to us with any forecast questions at **(317)-560-8122**. Press **1** for forecast questions.

You can also access real-time forecast updates and 24/7 meteorological chat assistance on your **Clarity** app. Click [here](#) for login assistance.



# Wave Height Forecast Update



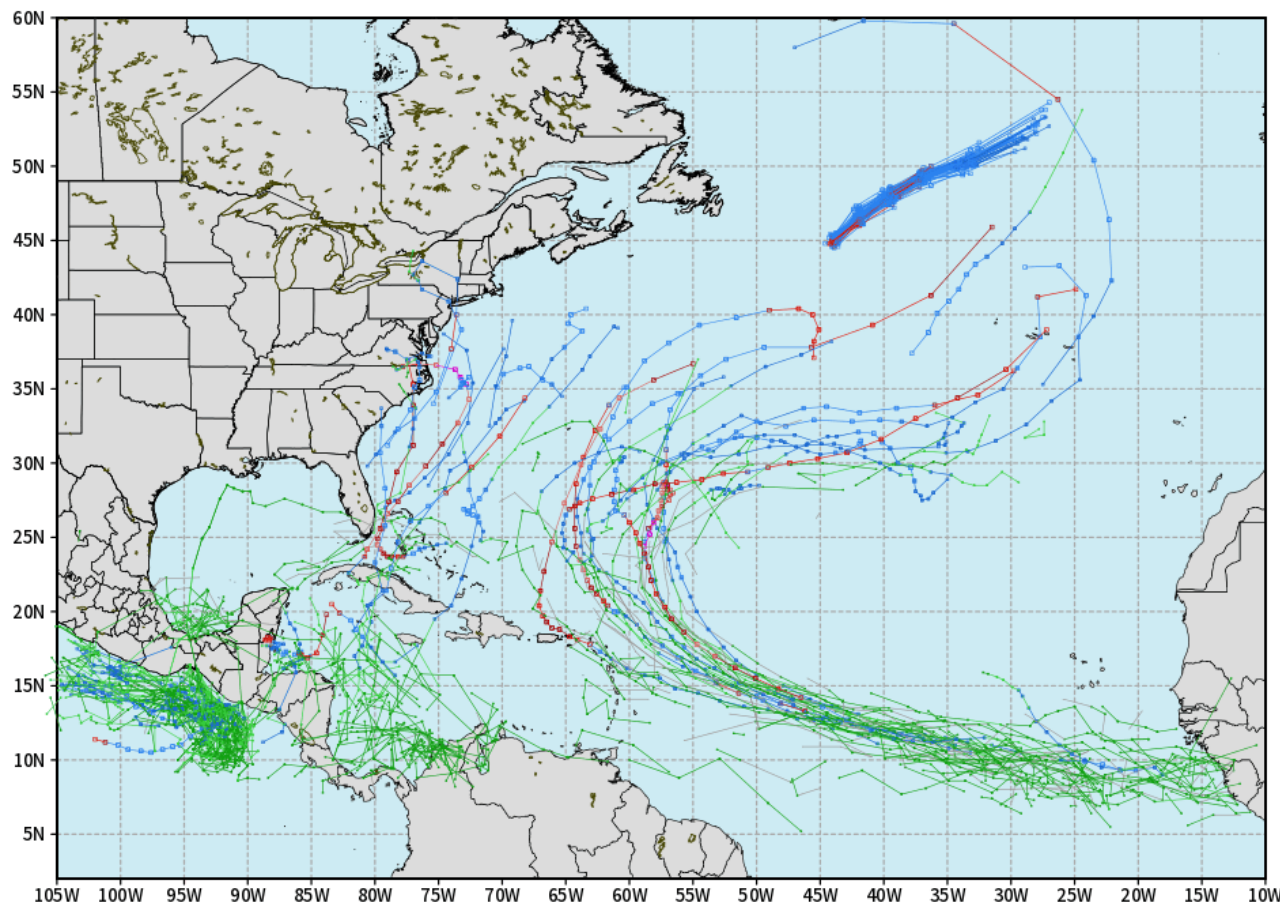
Choppy waters/wave heights of 3-4' are expected to continue until 1 PM MON.

# Houston Pilots Tropical Update

## 10-Day Tropical Outlook

ECMWF ATLANTIC EPS Cyclone Locations --> Next [10-days]  
INIT: 00Z05OCT2025 --> UNTIL 00Z25OCT2025

o-o ENSEMBLE MEAN  
o-o 1000 - 1010 hPa  
o-o 980 - 999 hPa  
o-o 960 - 979 hPa  
o-o 950 - 959 hPa  
o-o < 950 hPa



[weathermodels.com](http://weathermodels.com)

We are currently monitoring an additional tropical wave off the coast of Africa however this system is favored to recurve into the Atlantic at this time.

# Houston Pilots Visibility Chart (miles)



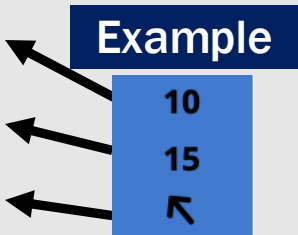
Visibility	Sun 2 pm	Sun 3 pm	Sun 4 pm	Sun 5 pm	Sun 6 pm	Sun 7 pm	Sun 8 pm	Sun 9 pm	Sun 10 pm	Sun 11 pm	Mon 12 am	Mon 1 am	Mon 2 am	Mon 3 am	Mon 4 am	Mon 5 am	Mon 6 am	Mon 7 am	Mon 8 am	Mon 9 am	Mon 10 am	Mon 11 am	Mon 12 pm	Mon 1 pm
Houston Pilots N - 610 Bridge	10	10	10	10	10	10	10	10	10	10	10	10	10	10	9	6.9	5.9	4.9	4.9	10	10	10	10	10
Houston Pilots M - Kinder 1	10	10	10	10	10	10	10	10	10	10	10	10	10	10	9	6.9	5.9	4.9	4.9	10	10	10	10	10
Houston Pilots L - Greens Bayou	10	10	10	10	10	10	10	10	10	10	10	10	10	10	9	6.9	5.9	4.9	4.9	9	10	10	10	10
Houston Pilots K - Shell Crude	10	10	10	10	10	10	10	10	10	10	10	10	10	10	9	6.9	5.9	4.9	4.9	10	10	10	10	10
Houston Pilots J - Lynchburg Ferries	10	10	10	10	10	10	10	10	10	10	10	10	10	10	9	6.9	5.9	4.9	4.9	9	10	10	10	10
Houston Pilots I - Exxon 3	10	10	10	10	10	10	10	10	10	10	10	10	10	10	9	6.9	5.9	5.9	4.9	9	10	10	10	10
Houston Pilots H - Morgans Point	10	10	10	10	10	10	10	10	10	10	10	10	10	10	9	6.9	5.9	5.9	4.9	9	10	10	10	10
Houston Pilots G - 75/76	10	10	10	10	10	10	10	10	10	10	10	10	9	9	7.9	6.9	6.9	5.9	4.9	6.9	10	10	10	10
Houston Pilots F - 63/64	10	10	10	10	10	10	10	10	10	10	10	10	9	7.9	7.9	6.9	6.9	5.9	4.9	6.9	10	10	10	10
Houston Pilots E - 51/52	10	10	10	10	10	10	10	10	10	10	10	10	7.9	7.9	7.9	6.9	6.9	6.9	4.9	6.9	10	10	10	10
Houston Pilots D - 37/38	10	10	10	10	10	10	10	10	10	10	10	10	7.9	7.9	7.9	6.9	6.9	6.9	4.9	6.9	10	10	10	10
Houston Pilots C - 25/26	10	10	10	10	10	10	10	10	10	10	10	10	7.9	7.9	7.9	7.9	6.9	6.9	5.9	7.9	10	10	10	10
Houston Pilots B - 11/12	10	10	10	10	10	10	10	10	10	10	10	10	7.9	7.9	7.9	9	7.9	7.9	5.9	9	10	10	10	10
Houston Pilots A - 1 & 2 Bravo	10	10	10	10	10	10	10	10	10	10	9	7.9	7.9	7.9	9	9	9	9	6.9	9	10	10	10	10

NOTE: This is automated data that may/may not agree with the official BAM thinking that's found on the daily slides or special visibility report slides. This data should be used as a guide only

# Houston Pilots Wind Chart



Sustained Wind 10 Knots  
Gusts 15 Knots  
Wind from the SE



Wind	Sun 2 pm	Sun 3 pm	Sun 4 pm	Sun 5 pm	Sun 6 pm	Sun 7 pm	Sun 8 pm	Sun 9 pm	Sun 10 pm	Sun 11 pm	Mon 12 am	Mon 1 am	Mon 2 am	Mon 3 am	Mon 4 am	Mon 5 am	Mon 6 am	Mon 7 am	Mon 8 am	Mon 9 am	Mon 10 am	Mon 11 am	Mon 12 pm	Mon 1 pm
Houston Pilots N - 610 Bridge	9	8	8	8	8	8	7	6	6	6	5	5	3	3	3	3	5	5	5	5	6	6	6	6
	18	18	17	17	16	15	13	13	12	10	9	8	8	8	8	8	8	8	9	9	10	10	12	12
Houston Pilots M - Kinder 1	9	8	8	8	8	8	7	6	6	6	5	5	3	3	3	3	5	5	5	5	6	6	6	6
	18	18	17	17	16	15	13	13	12	10	9	8	8	8	8	8	8	8	9	9	10	10	12	12
Houston Pilots L - Greens Bayou	9	9	8	8	8	8	7	6	6	6	5	5	3	3	3	3	3	5	5	5	6	6	6	6
	18	18	17	16	16	15	13	13	12	10	9	9	8	8	8	8	8	8	9	9	10	10	12	10
Houston Pilots K - Shell Crude	9	9	8	8	8	8	7	6	6	6	5	5	3	3	3	3	3	5	5	5	6	6	6	6
	18	18	17	16	16	15	13	13	12	10	10	9	8	8	8	8	8	8	9	9	10	10	12	10
Houston Pilots J - Lynchburg Ferries	9	9	8	8	8	7	6	6	6	5	5	3	3	3	3	3	3	5	5	5	5	6	6	6
	18	17	17	16	16	15	13	13	12	10	9	9	8	8	8	8	8	8	9	9	10	10	10	10
Houston Pilots I - Exxon 3	12	12	12	12	12	10	10	10	10	10	9	9	8	8	8	8	8	8	8	8	7	7	7	7
	20	20	18	18	17	16	15	15	15	15	14	13	13	13	12	12	12	12	10	10	12	10	12	12
Houston Pilots H - Morgans Point	12	12	12	12	10	10	10	10	10	10	10	9	8	8	8	8	8	8	8	7	7	7	7	7
	20	20	18	17	17	16	15	15	15	15	14	13	13	12	12	12	12	12	10	10	12	12	12	12
Houston Pilots G - 75/76	12	12	12	12	12	12	12	12	12	12	10	10	10	9	9	9	9	9	8	8	8	7	7	7
	20	20	18	18	18	17	16	17	17	17	16	15	15	14	14	13	13	13	12	12	13	13	13	12
Houston Pilots F - 63/64	12	12	12	10	12	10	12	12	12	12	10	10	10	9	9	9	9	9	8	8	8	7	6	6
	20	20	18	18	17	17	16	17	17	16	16	15	15	14	13	13	13	13	12	12	13	13	13	12
Houston Pilots E - 51/52	13	13	12	12	12	12	12	13	13	12	10	10	10	9	8	8	8	8	8	8	8	7	7	7
	20	20	18	18	18	17	17	17	17	17	16	15	14	13	13	13	13	13	12	12	13	13	13	12
Houston Pilots D - 37/38	13	13	13	13	13	13	13	13	13	12	10	10	9	9	8	8	8	8	8	8	8	7	7	7
	21	20	18	18	18	18	17	17	17	17	16	15	14	13	13	12	12	12	12	12	13	12	13	12
Houston Pilots C - 25/26	13	13	13	13	13	12	12	12	12	10	10	9	8	8	8	8	8	8	8	8	8	7	7	7
	21	20	18	18	18	18	17	17	17	16	15	14	13	13	12	12	12	12	12	12	13	12	12	12
Houston Pilots B - 11/12	13	13	12	12	12	10	10	10	10	9	8	8	7	7	6	6	6	7	7	7	7	7	6	6
	21	20	18	18	18	18	17	17	17	16	15	13	13	12	10	10	10	10	10	10	12	12	12	12
Houston Pilots A - 1 & 2 Bravo	15	14	13	13	13	13	13	13	13	12	10	10	9	8	8	8	8	8	8	8	7	6	6	6
	22	21	20	20	20	20	20	20	20	18	16	14	14	13	13	12	12	12	12	12	12	12	12	10

NOTE: This is automated data that may/may not agree with the official BAM thinking that's found on the daily slides.  
This data should be used as a guide only.

# Houston Pilots: SUN. 10/5/2025

## Forecast Discussion

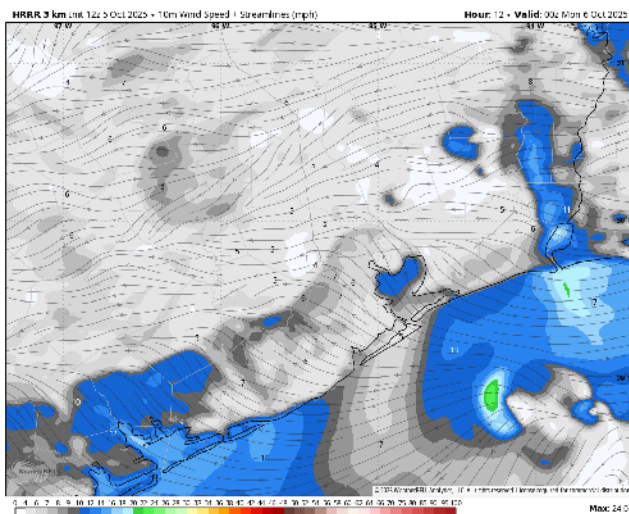
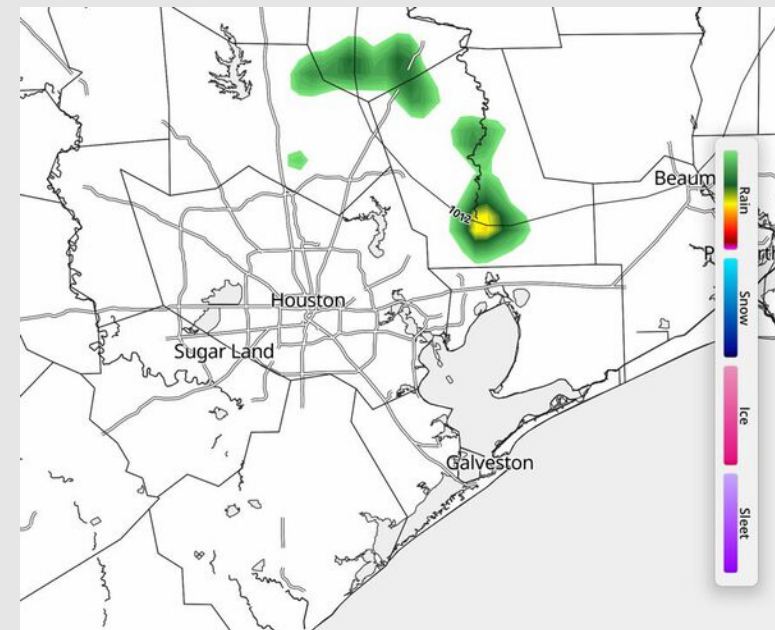
**Precip:** Isolated showers will be possible from 6PM to 12AM for all Stations.

**Wind:** Winds will be out of the E, shifting to be out of the SE after 5PM. **N of Morgan's Point:** Winds will be at 3 – 8 kts. **S of Morgan's Point:** Winds will be at 8 – 13 kts.

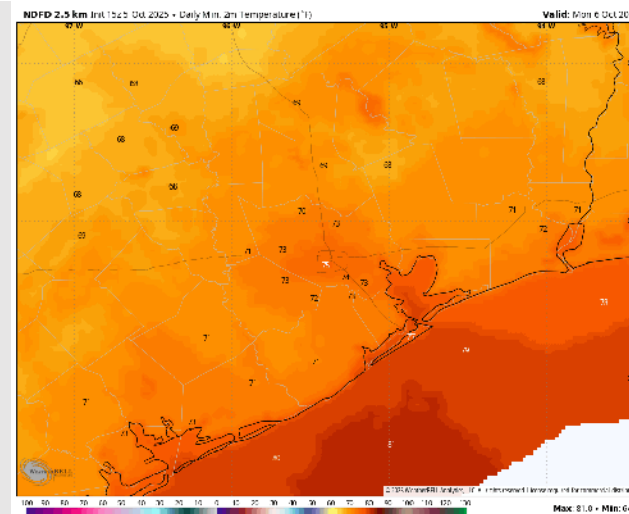
**Low Temps:** **N of Morgan's Point:** Low 70s. **S of Morgan's Point:** Mid 70s F.

**Visibility:** No visibility concerns today.

## Precip Image: 9 PM CT



**Wind Speed:**  
7 PM CT



**Low Temps**  
**MON AM**

# Houston Pilots: MON. 10/6/2025

## Forecast Discussion

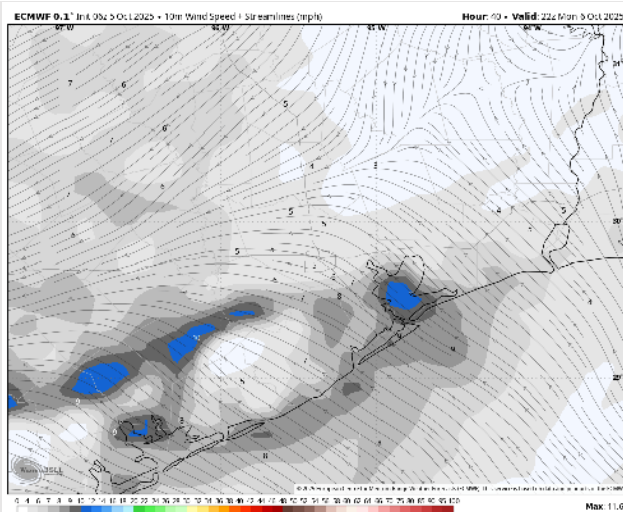
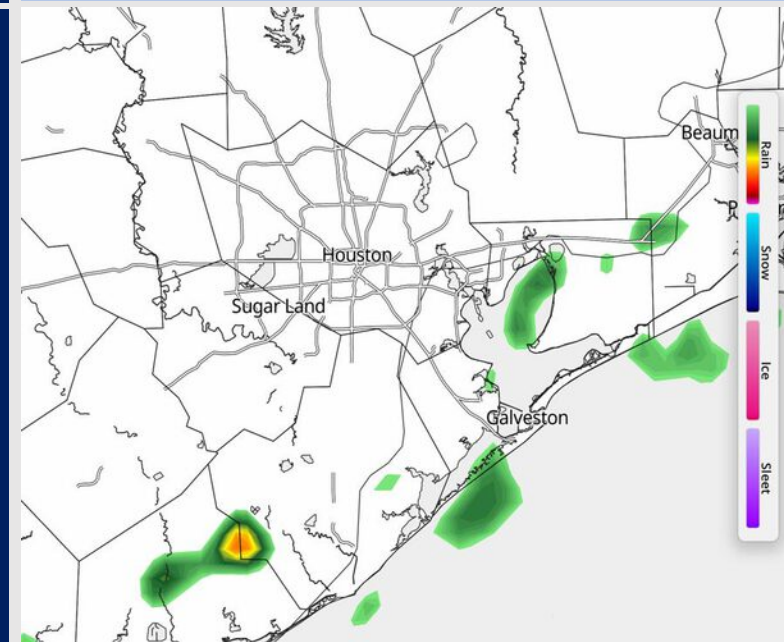
**Precip:** Isolated showers and storms possible for Stations S of Morgan's Point from 3 AM to 4 PM before the risk extends to all Stations. Precip risks then last through 8 PM. **Lightning and wind gusts of 20 kts possible with storms.**

**Wind:** Winds will be generally out of the E/SE. **N of Morgan's Point:** Winds will be at 3 – 8 kts. **S of Morgan's Point:** Winds will be at 5 – 10 kts through 12 PM before decreasing to 3 – 8 kts.

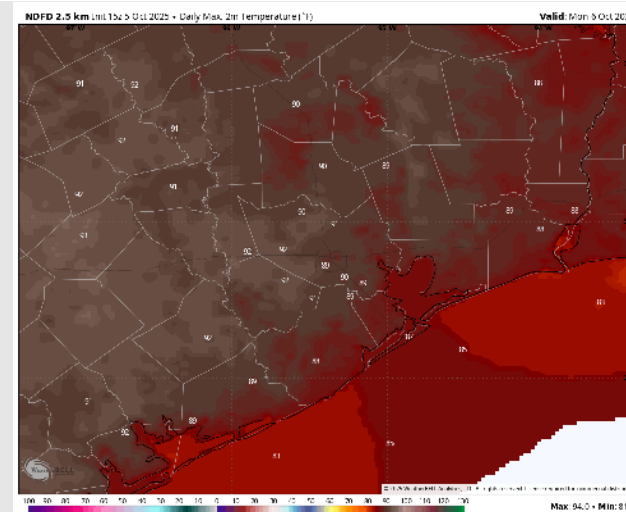
**High Temps:** **N of Morgan's Point:** Near 90. **S of Morgan's Point:** High 80s F.

**Visibility:** No fog concerns Monday however visibilities can be briefly reduced under heavy downpours.

## Precip Image: 2 PM CT



Wind Speed:  
5 PM CT



High Temps  
Monday

# Houston Pilots: TUE. 10/7/2025

## Forecast Discussion

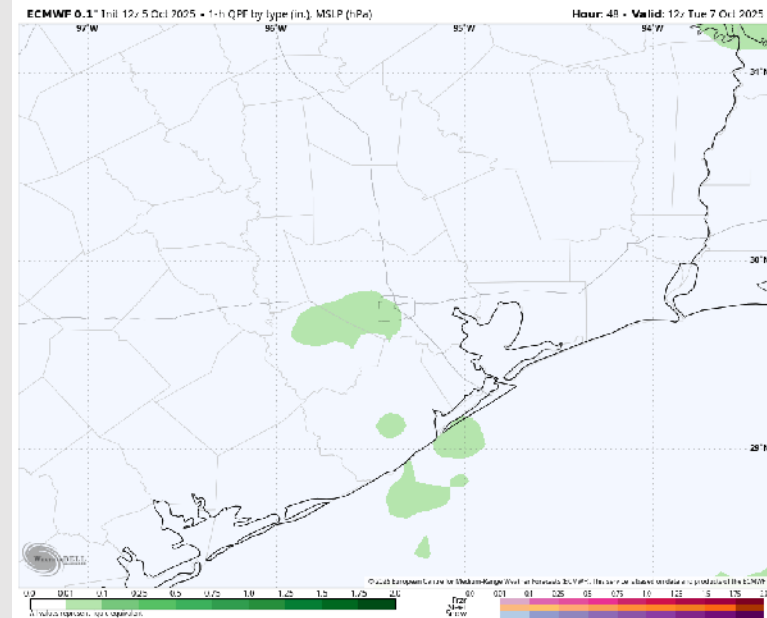
**Precip:** Isolated showers and storms possible S of Morgan's Point between 2 – 8 AM and between 2 – 6 PM. **Localized lightning and wind gusts of 20 kts possible with storms.**

**Wind:** Winds will be variable through 12 PM before settling out of the E/SE. **N of Morgan's Point:** Winds will be at 2 – 7 kts. **S of Morgan's Point:** Winds will be at 4 – 9 kts.

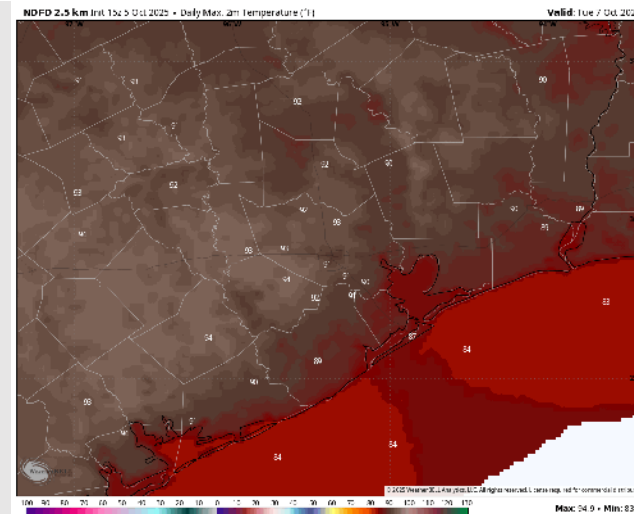
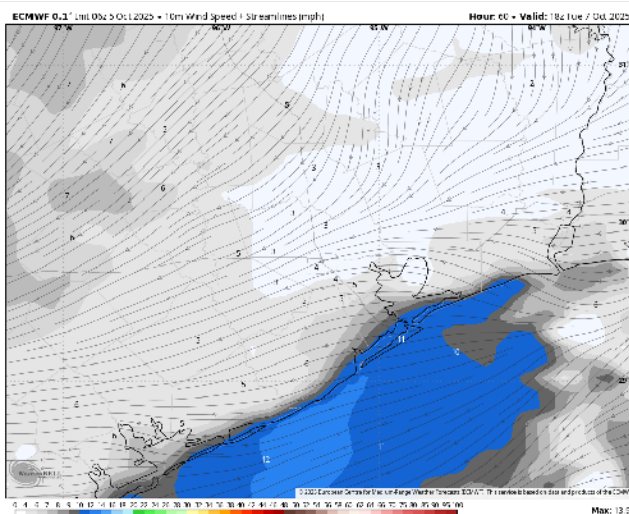
**High Temps:** **N of Morgan's Point:** Low 90s F. **S of Morgan's Point:** Mid 80s F.

**Visibility:** No fog concerns Tuesday however visibilities can be briefly reduced under heavy downpours.

## Precip Image: 7 AM CT




**Wind Speed:**  
**1 PM CT**




**High Temps**  
**Tuesday**



Figure 1 is a map of the North Atlantic region showing the 3-hourly average density ( $\sigma_t$ ) in  $\text{kg/m}^3$ . The map covers the area from 10°N to 60°N and 10°W to 30°E. A color scale on the right indicates density values from 20.0 to 21.0  $\text{kg/m}^3$ . The map shows a high-density water mass (red/orange) in the central North Atlantic, with lower density water (blue/yellow) to the west and south. A black box highlights the region of interest for the study, roughly between 40°N-50°N and 15°W-25°W.

**Week ¾ Temperature Outlook** 

October 17 – 30, 2025 | Updated: 10/3/25 Forecaster: Walts



**Forecast Period GHIWDO Data**

10 Year	30 Year	50 Year	80M	2024
141	162	175	185	195

**CONFIDENCE METER**

BELOW NORMAL    ABOVE NORMAL

**FORECAST RISK**

Warmer N. Plains

**Week 3/4 Precipitation Outlook**

October 17 - 30, 2025 | Updated: 10/3/25

Forecaster: Waits

**CONFIDENCE METER**

BELOW NORMAL ABOVE NORMAL

**FORECAST RISK**

Wetter R. Plains  
Drier NE US

The map displays precipitation outlooks for the period October 17 to 30, 2025. The outlooks are categorized into four main regions: Above Normal (green), Below Normal (brown), Equal Chances (tan), and Much Below Normal (red). The map also includes a Confidence Meter and a Forecast Risk section.

- Temps are expected to be above normal for the next 7 days with isolated rain chances throughout the week.
- Above normal temperatures and below normal rain chances are favored for days 8 – 14.
- Above normal temperatures are favored for mid to late October with much below normal rainfall chances.