

Houston Pilots Forecast Package



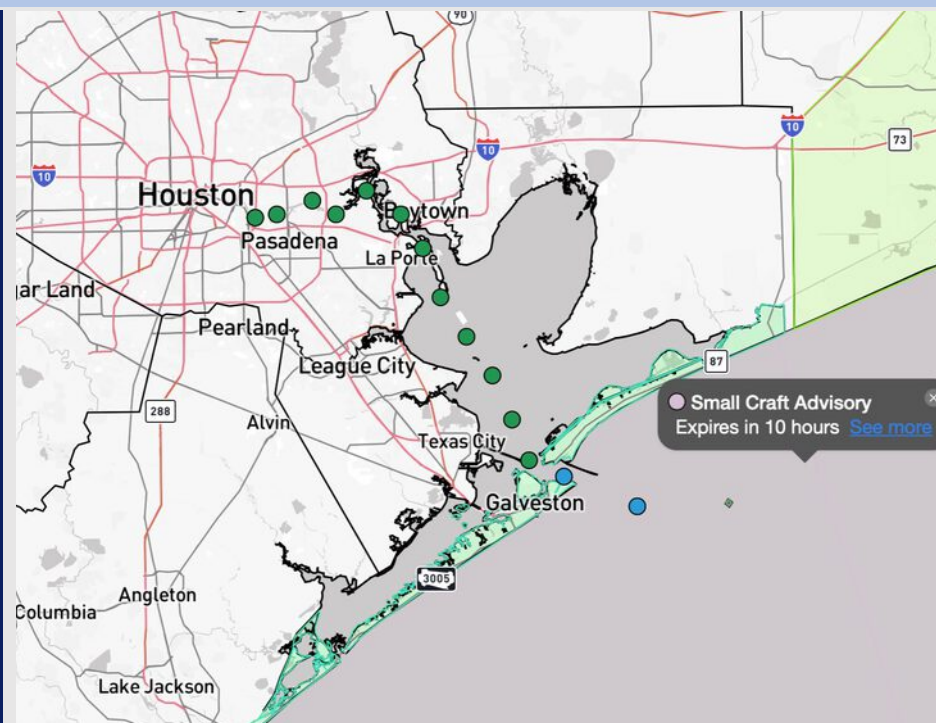
Updated: 9:00 PM CT

Saturday, October 4, 2025

Forecaster: Tyler Riggles

Weather Headlines

- Coverage of showers and storms over the next 72 hours generally expected to remain more isolated in nature.
- **Winds gusts between 20 – 25 kts will be possible over the next 72 hours.**
- Waves are expected to reach 3 – 4' at the Boarding Station through 7PM today.



Current Radar: 8:50 PM CT

As always, please do not hesitate to reach out to us with any forecast questions at **(317)-560-8122**. Press 1 for forecast questions.

You can also access real-time forecast updates and 24/7 meteorological chat assistance on your **Clarity** app. Click [here](#) for login assistance.



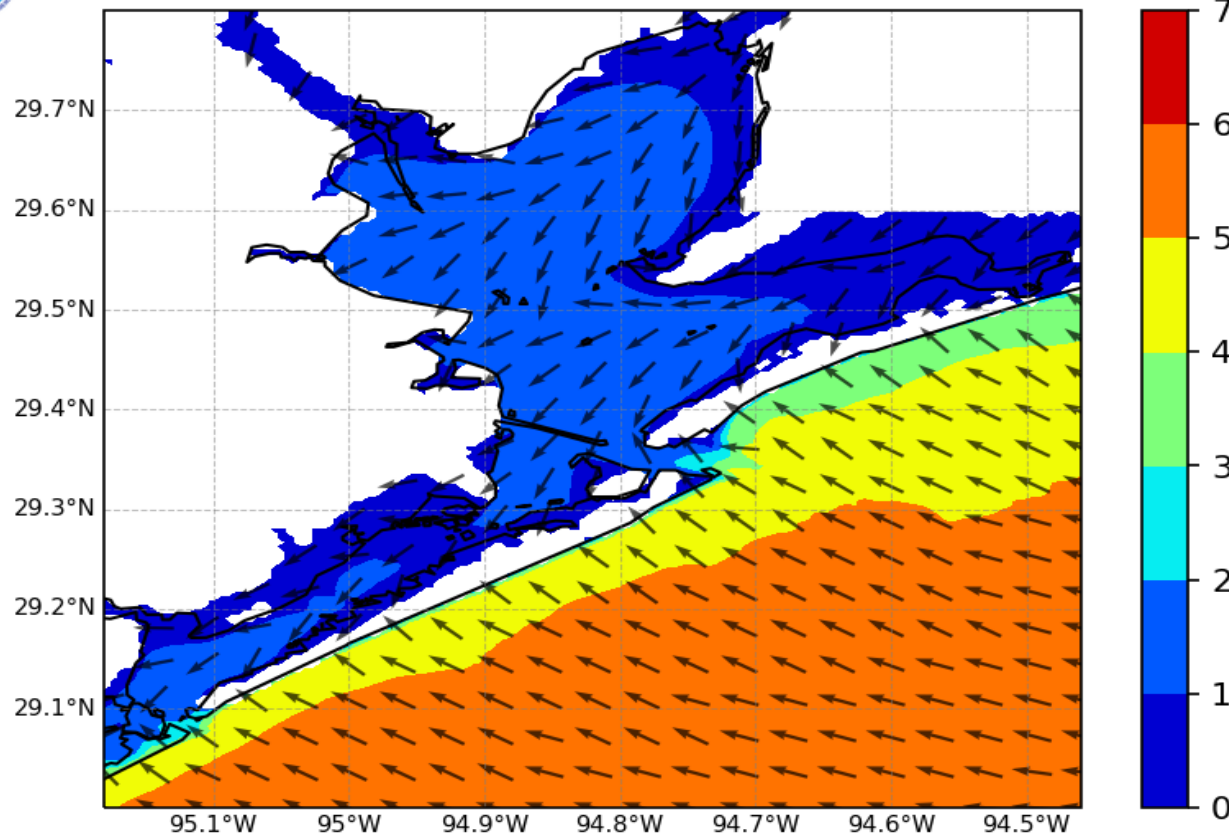
Wave Height Forecast Update



NWPS Significant

7 AM CT SUN

Wave Direction



Choppy waters/wave heights of 3-4' are expected to continue until 7 PM SUN.

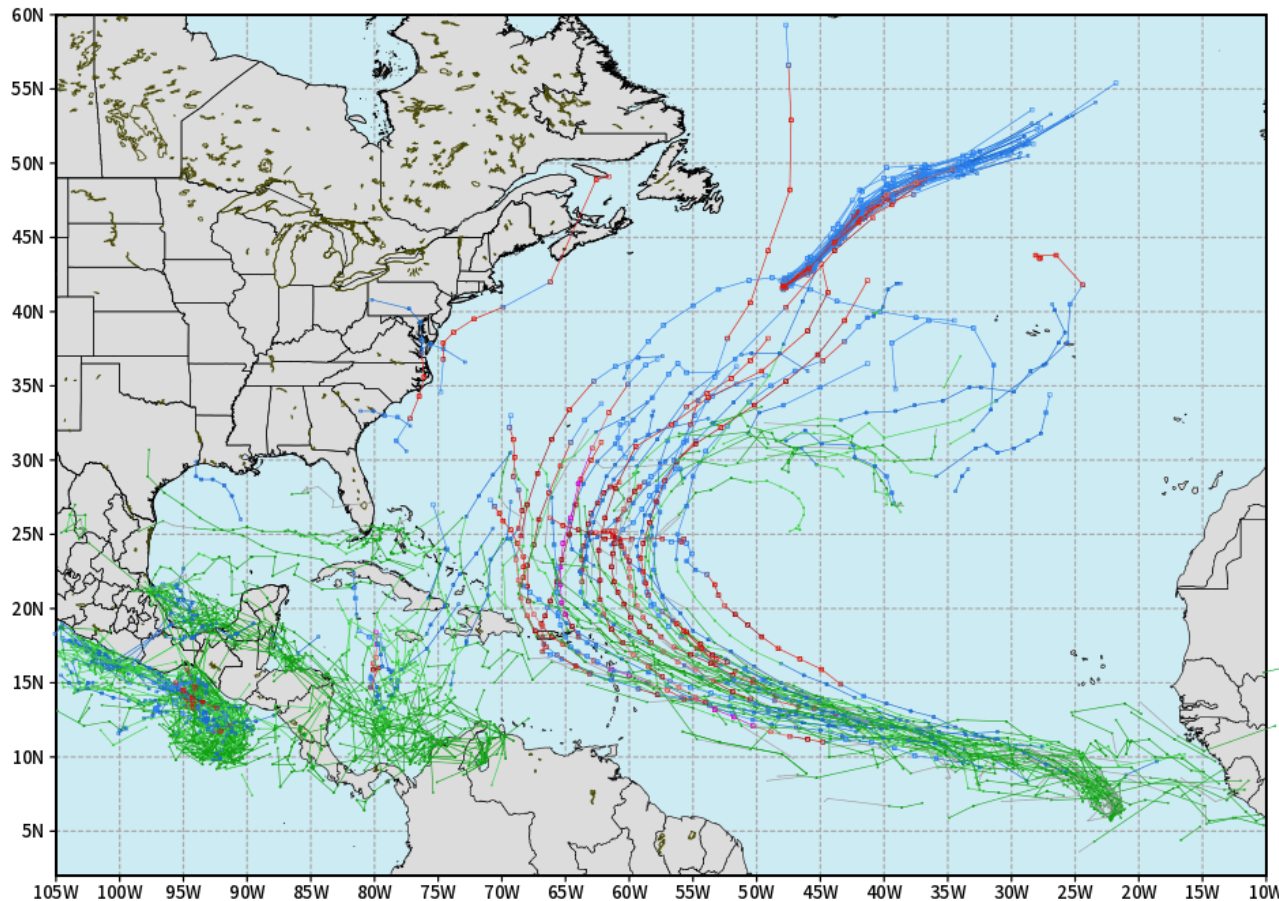
Wave heights are favored to peak near 4' at the Boarding Station at 7AM SUN.

Houston Pilots Tropical Update

10-Day Tropical Outlook

ECMWF ATLANTIC EPS Cyclone Locations --> Next [10-days]
INIT: 12Z04OCT2025 --> UNTIL 12Z24OCT2025

o-o ENSEMBLE MEAN
o-o 1000 - 1010 hPa
o-o 980 - 999 hPa
o-o 960 - 979 hPa
o-o 950 - 959 hPa
o-o < 950 hPa



weathermodels.com

A weak tropical wave has developed within the North-Central portion of the Gulf and is expected to drift Northwestward towards Texas however it is unlikely that this wave can develop further and is not favored to become a tropical depression.

We are currently monitoring an additional tropical wave off the coast of Africa however this system is favored to recurve into the Atlantic at this time.

Houston Pilots Visibility Chart (miles)



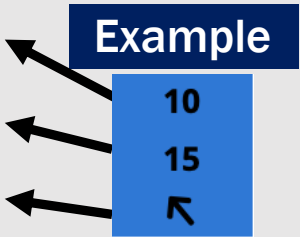
Visibility	Sat 10 pm	Sat 11 pm	Sun 12 am	Sun 1 am	Sun 2 am	Sun 3 am	Sun 4 am	Sun 5 am	Sun 6 am	Sun 7 am	Sun 8 am	Sun 9 am	Sun 10 am	Sun 11 am	Sun 12 pm	Sun 1 pm	Sun 2 pm	Sun 3 pm	Sun 4 pm	Sun 5 pm	Sun 6 pm	Sun 7 pm	Sun 8 pm	Sun 9 pm
Houston Pilots N - 610 Bridge	10	10	10	10	10	10	10	10	10	10	10	10	10	10	10	10	10	10	10	10	10	10	10	10
Houston Pilots M - Kinder 1	10	10	10	10	10	10	10	10	10	10	10	10	10	10	10	10	10	10	10	10	10	10	10	10
Houston Pilots L - Greens Bayou	10	10	10	10	10	10	10	10	10	10	10	10	10	10	10	10	10	10	10	10	10	10	10	10
Houston Pilots K - Shell Crude	10	10	10	10	10	10	10	10	10	10	10	10	10	10	10	10	10	10	10	10	10	10	10	10
Houston Pilots J - Lynchburg Ferries	10	10	10	10	10	10	10	10	10	10	10	10	10	10	10	10	10	10	10	10	10	10	10	10
Houston Pilots I - Exxon 3	10	10	10	10	10	10	10	10	10	10	10	10	10	10	10	10	10	10	10	10	10	10	10	10
Houston Pilots H - Morgans Point	10	10	10	10	10	10	10	10	10	10	10	10	10	10	10	10	10	10	10	10	10	10	10	10
Houston Pilots G - 75/76	10	10	10	10	10	10	10	10	10	10	10	10	10	10	10	10	10	10	10	10	10	10	10	10
Houston Pilots F - 63/64	10	10	10	10	10	10	10	10	10	10	10	10	10	10	10	10	10	10	10	10	10	10	10	10
Houston Pilots E - 51/52	10	10	10	10	10	10	10	10	10	10	10	10	10	10	10	10	10	10	10	10	10	10	10	10
Houston Pilots D - 37/38	10	10	10	10	10	10	10	10	10	10	10	10	10	10	10	10	10	10	10	10	10	10	10	10
Houston Pilots C - 25/26	10	10	10	10	10	10	10	10	10	10	10	10	10	10	10	10	10	10	10	10	10	10	10	10
Houston Pilots B - 11/12	10	10	10	10	10	10	10	10	10	10	10	10	10	10	10	10	10	10	10	10	10	10	10	10
Houston Pilots A - 1 & 2 Bravo	10	10	10	10	10	10	10	10	10	10	10	10	10	10	10	10	10	10	10	10	10	10	10	10

NOTE: This is automated data that may/may not agree with the official BAM thinking that's found on the daily slides or special visibility report slides. This data should be used as a guide only

Houston Pilots Wind Chart



Sustained Wind 10 Knots
Gusts 15 Knots
Wind from the SE



Wind	Sat 10 pm	Sat 11 pm	Sun 12 am	Sun 1 am	Sun 2 am	Sun 3 am	Sun 4 am	Sun 5 am	Sun 6 am	Sun 7 am	Sun 8 am	Sun 9 am	Sun 10 am	Sun 11 am	Sun 12 pm	Sun 1 pm	Sun 2 pm	Sun 3 pm	Sun 4 pm	Sun 5 pm	Sun 6 pm	Sun 7 pm	Sun 8 pm	Sun 9 pm
Houston Pilots N - 610 Bridge	8 16 ↖	8 16 ↖	8 16 ↖	8 16 ↖	8 16 ↖	8 15 ↖	8 15 ↖	8 15 ↖	8 15 ↖	8 16 ↖	9 16 ↖	10 18 ↖	10 20 ↖	10 20 ↖	10 20 ↖	10 21 ↖	9 20 ↖	10 20 ↖	10 20 ↖	9 20 ↖	9 18 ↖	9 17 ↖	8 15 ↖	7 15 ↖
Houston Pilots M - Kinder 1	8 16 ↖	8 16 ↖	8 16 ↖	8 16 ↖	8 16 ↖	8 15 ↖	8 15 ↖	8 16 ↖	8 15 ↖	9 16 ↖	9 16 ↖	10 18 ↖	10 20 ↖	10 20 ↖	10 20 ↖	10 21 ↖	9 20 ↖	10 20 ↖	10 20 ↖	9 20 ↖	9 18 ↖	9 17 ↖	8 15 ↖	8 15 ↖
Houston Pilots L - Greens Bayou	8 16 ↖	8 16 ↖	8 17 ↖	8 16 ↖	8 17 ↖	8 16 ↖	8 15 ↖	8 16 ↖	8 16 ↖	8 16 ↖	9 16 ↖	10 18 ↖	10 20 ↖	10 20 ↖	10 20 ↖	10 20 ↖	9 18 ↖	10 20 ↖	10 20 ↖	9 20 ↖	9 18 ↖	8 16 ↖	8 15 ↖	7 15 ↖
Houston Pilots K - Shell Crude	8 16 ↖	8 17 ↖	9 18 ↖	8 17 ↖	8 17 ↖	8 17 ↖	8 17 ↖	8 17 ↖	8 16 ↖	8 17 ↖	9 17 ↖	10 20 ↖	10 20 ↖	10 20 ↖	10 20 ↖	10 20 ↖	9 20 ↖	10 20 ↖	10 20 ↖	9 20 ↖	9 18 ↖	8 16 ↖	8 15 ↖	7 15 ↖
Houston Pilots J - Lynchburg Ferries	8 16 ↖	8 17 ↖	8 17 ↖	8 17 ↖	8 17 ↖	8 16 ↖	8 15 ↖	8 16 ↖	8 16 ↖	8 17 ↖	8 17 ↖	9 20 ↖	10 20 ↖	10 20 ↖	10 20 ↖	10 20 ↖	9 18 ↖	10 18 ↖	10 18 ↖	9 18 ↖	9 17 ↖	8 16 ↖	8 15 ↖	7 15 ↖
Houston Pilots I - Exxon 3	14 20 ↖	15 21 ↖	15 23 ↖	16 23 ↖	16 23 ↖	16 23 ↖	16 23 ↖	15 22 ↖	15 22 ↖	15 22 ↖	15 21 ↖	15 21 ↖	14 21 ↖	14 21 ↖	13 20 ↖	13 20 ↖	12 20 ↖	13 21 ↖	13 21 ↖	13 20 ↖	13 20 ↖	12 18 ↖	10 16 ↖	10 16 ↖
Houston Pilots H - Morgans Point	15 21 ↖	15 22 ↖	16 24 ↖	17 24 ↖	16 23 ↖	16 24 ↖	16 23 ↖	15 22 ↖	15 23 ↖	15 22 ↖	15 21 ↖	15 21 ↖	15 21 ↖	14 21 ↖	13 21 ↖	13 21 ↖	12 20 ↖	13 21 ↖	13 21 ↖	13 20 ↖	13 20 ↖	12 18 ↖	12 16 ↖	10 16 ↖
Houston Pilots G - 75/76	16 23 ↖	17 25 ↖	17 25 ↖	18 25 ↖	17 26 ↖	18 25 ↖	17 26 ↖	17 25 ↖	17 25 ↖	17 25 ↖	16 24 ↖	16 24 ↖	16 23 ↖	15 23 ↖	15 23 ↖	13 22 ↖	13 21 ↖	13 21 ↖	13 21 ↖	13 20 ↖	13 20 ↖	13 20 ↖	13 18 ↖	13 17 ↖
Houston Pilots F - 63/64	16 24 ↖	17 25 ↖	17 25 ↖	18 25 ↖	17 26 ↖	17 25 ↖	17 26 ↖	17 25 ↖	17 25 ↖	17 25 ↖	17 24 ↖	17 24 ↖	16 24 ↖	15 23 ↖	15 23 ↖	13 22 ↖	13 21 ↖	13 21 ↖	13 21 ↖	13 20 ↖	13 20 ↖	13 20 ↖	12 18 ↖	12 17 ↖
Houston Pilots E - 51/52	18 26 ↖	20 26 ↖	20 28 ↖	20 28 ↖	20 26 ↖	20 28 ↖	18 26 ↖	17 26 ↖	18 26 ↖	17 26 ↖	17 25 ↖	17 24 ↖	17 24 ↖	16 23 ↖	15 23 ↖	14 22 ↖	13 21 ↖	14 22 ↖	14 21 ↖	13 20 ↖	13 20 ↖	13 20 ↖	13 18 ↖	13 18 ↖
Houston Pilots D - 37/38	20 26 ↖	20 28 ↖	20 29 ↖	20 29 ↖	20 28 ↖	20 28 ↖	20 26 ↖	18 26 ↖	18 26 ↖	17 26 ↖	17 25 ↖	17 25 ↖	17 24 ↖	16 24 ↖	15 23 ↖	15 22 ↖	13 22 ↖	14 22 ↖	14 21 ↖	13 20 ↖	13 20 ↖	13 20 ↖	13 20 ↖	13 18 ↖
Houston Pilots C - 25/26	18 26 ↖	18 26 ↖	20 28 ↖	18 28 ↖	18 26 ↖	18 26 ↖	17 26 ↖	17 25 ↖	17 25 ↖	17 25 ↖	17 24 ↖	17 24 ↖	17 24 ↖	16 24 ↖	15 23 ↖	15 22 ↖	14 22 ↖	14 22 ↖	14 21 ↖	13 20 ↖	13 20 ↖	13 20 ↖	13 18 ↖	13 18 ↖
Houston Pilots B - 11/12	16 25 ↖	16 26 ↖	16 26 ↖	16 26 ↖	15 26 ↖	15 25 ↖	15 25 ↖	15 24 ↖	15 24 ↖	15 23 ↖	14 22 ↖	15 23 ↖	15 23 ↖	15 22 ↖	15 22 ↖	14 22 ↖	13 21 ↖	13 21 ↖	13 21 ↖	13 20 ↖	13 20 ↖	12 20 ↖	10 18 ↖	10 17 ↖
Houston Pilots A - 1 & 2 Bravo	20 29 ↖	21 30 ↖	22 31 ↖	22 31 ↖	21 29 ↖	21 30 ↖	21 29 ↖	20 28 ↖	20 28 ↖	20 26 ↖	17 25 ↖	17 26 ↖	18 26 ↖	17 25 ↖	17 24 ↖	16 24 ↖	15 22 ↖	15 22 ↖	15 22 ↖	13 20 ↖	13 20 ↖	13 20 ↖	13 18 ↖	13 18 ↖

NOTE: This is automated data that may/may not agree with the official BAM thinking that's found on the daily slides.
This data should be used as a guide only.

Houston Pilots: SUN. 10/5/2025

Forecast Discussion

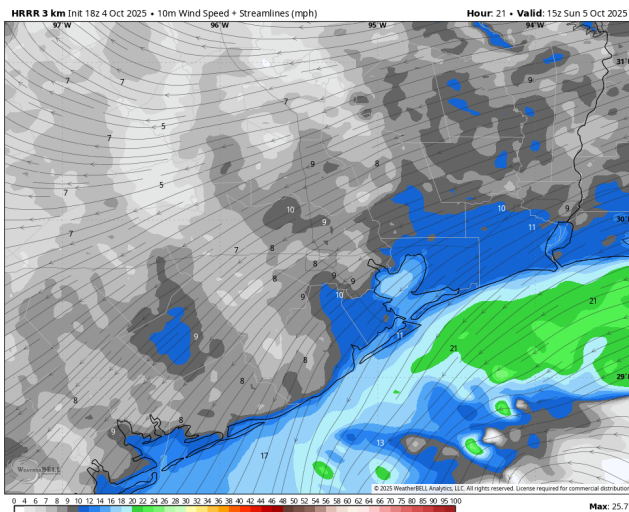
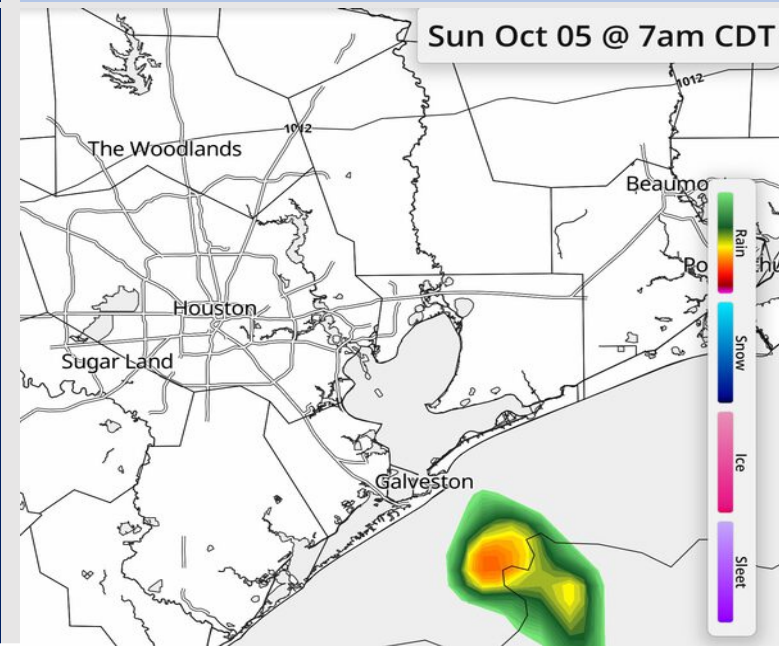
Precip: Isolated showers will be possible S of 25/26 from 6AM – 5PM today.

Wind: Winds will be out of the E today. **N of Morgan's Point:** Winds will be at 4 – 9 kts. **S of Morgan's Point:** Winds will be at 13 – 18 kts through 1 PM before decreasing to 10 – 15 kts the rest of the day. **Non-thunderstorm wind gusts of 20 – 25 kts will be possible for stations S of Morgan's Point.**

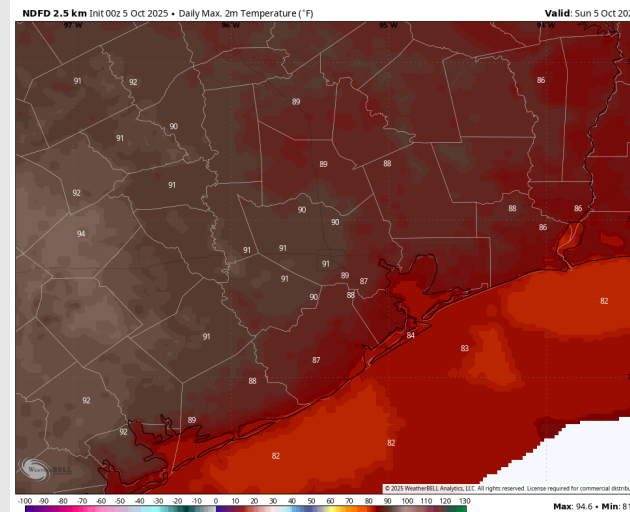
High Temps: **N of Morgan's Point:** High 80s. **S of Morgan's Point:** Mid 80s F.

Visibility: No visibility concerns today.

Precip Image: 7 AM CT



Wind Speed:
10 AM CT



High Temps
Today

Houston Pilots: MON. 10/6/2025

Forecast Discussion

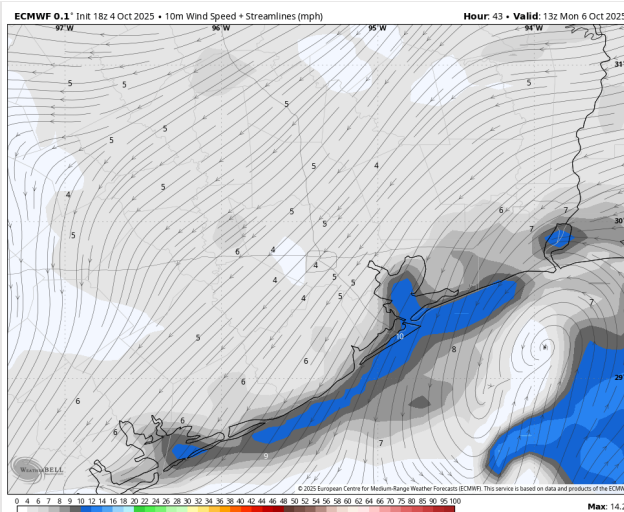
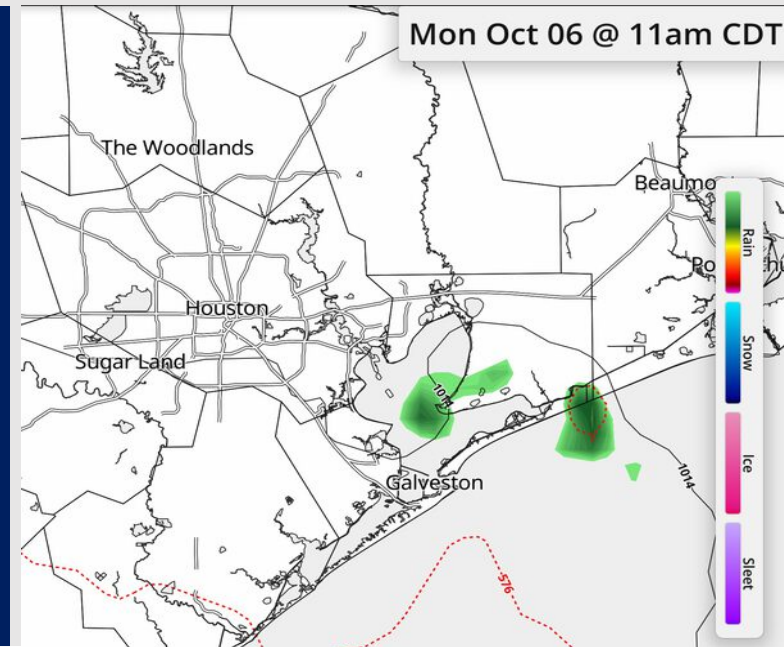
Precip: Isolated showers and storms possible for Stations S of Morgan's Point from 5 AM to 4 PM before the risk extends to all Stations. Precip risks then last through 9 PM. **Lightning and wind gusts of 20 kts possible with storms.**

Wind: Winds will be generally out of the E/SE Monday, becoming variable between 3 – 10 AM. **N of Morgan's Point:** Winds will be at 3 – 8 kts. **S of Morgan's Point:** Winds will be at 5 – 10 kts through 12 PM before decreasing to 3 – 8 kts.

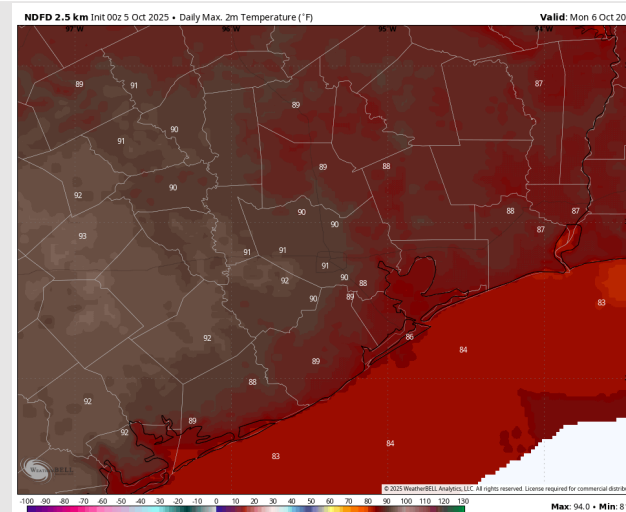
High Temps: **N of Morgan's Point:** Low 90s. **S of Morgan's Point:** High 80s F.

Visibility: No fog concerns Monday however visibilities can be briefly reduced under heavy downpours.

Precip Image: 11 AM CT



Wind Speed:
8 AM CT



High Temps
Monday

Forecast Discussion

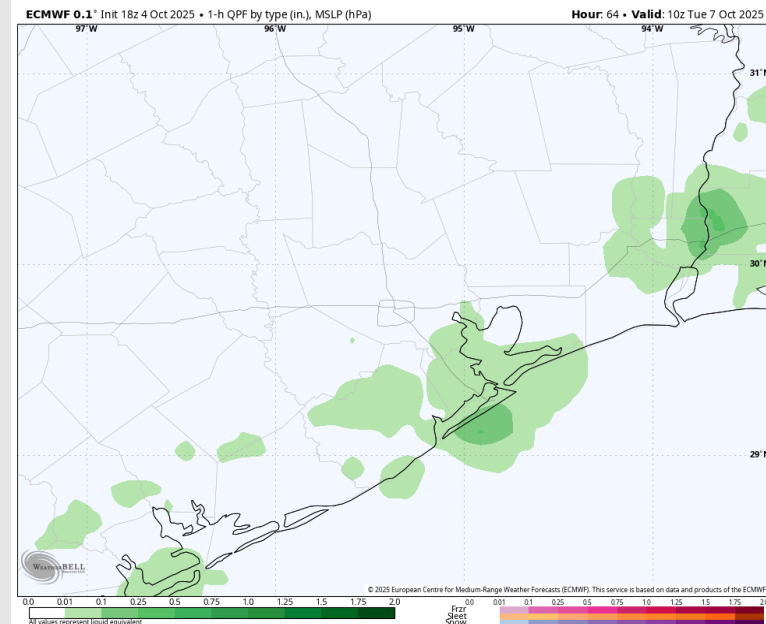
Precip: Scattered showers and storms possible S of Morgan's Point between 2 – 7 AM and between 3 – 6 PM. **Localized lightning and wind gusts of 20 kts possible with storms.**

Wind: Winds will be variable through 12 PM before settling out of the E/SE. **N of Morgan's Point:** Winds will be at 2 – 7 kts. **S of Morgan's Point:** Winds will be at 3 – 8 kts.

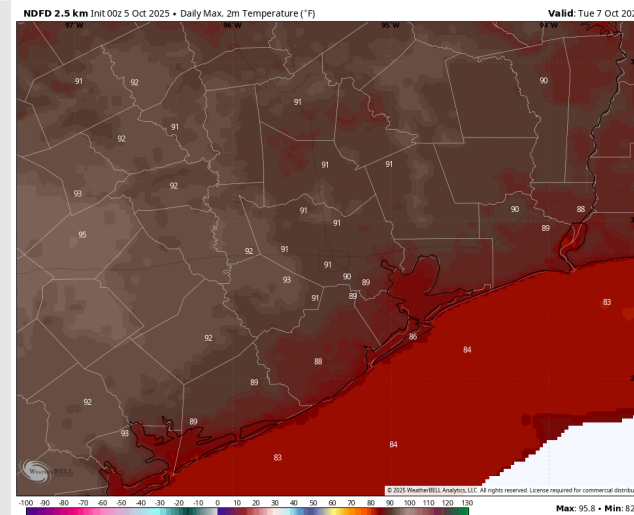
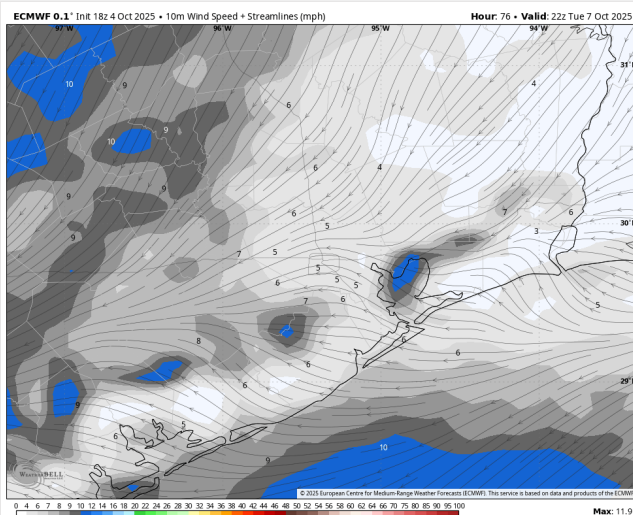
High Temps: **N of Morgan's Point:** Low 90s F. **S of Morgan's Point:** Mid 80s F.

Visibility: No fog concerns Tuesday however visibilities can be briefly reduced under heavy downpours.

Precip Image: 5 AM CT



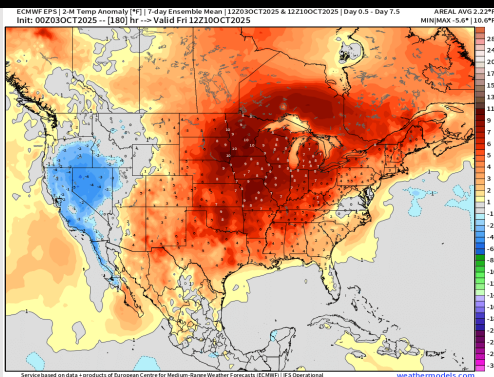
Wind Speed:
5 PM CT



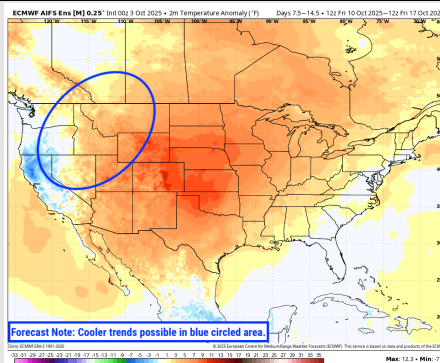
High Temps
Tuesday

Houston Pilots: 10/5/25

Next 7 Day Temperature Departure

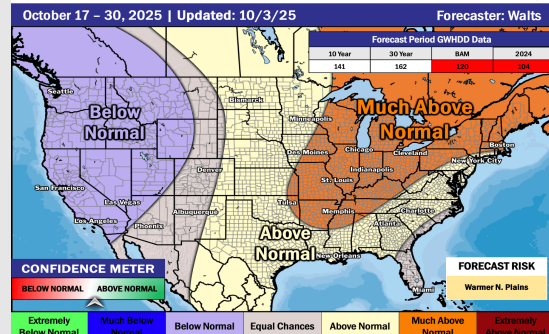


8-14 Day Temperature Departure

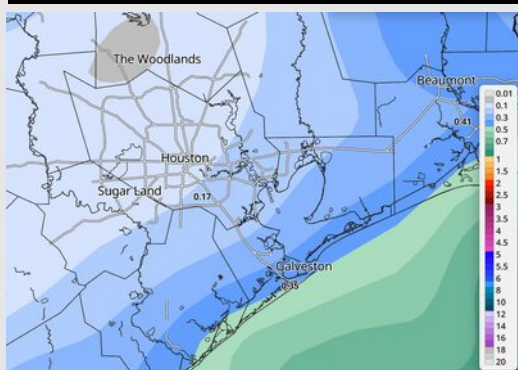


15-30 Day Temperature Departure

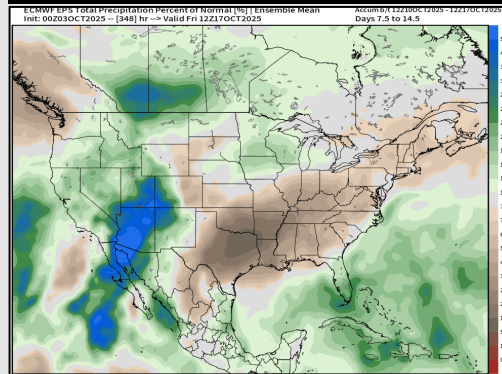
Week ¾ Temperature Outlook



Next 7 Day Total Precipitation

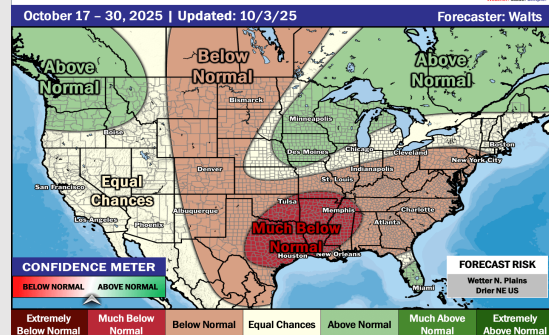


8-14 Day % of Average Precip.



15-30 Day % of Average Precip.

Week ¾ Precipitation Outlook



- Temps are expected to be above normal for the next 7 days with minor rain chances for the weekend and better coverage and chances arriving by the start of next week.
- Above normal temperatures and below normal rain chances are favored for days 8 - 14.
- Above normal temperatures are favored for mid to late October with much below normal rainfall chances.