

Houston Pilots Forecast Package



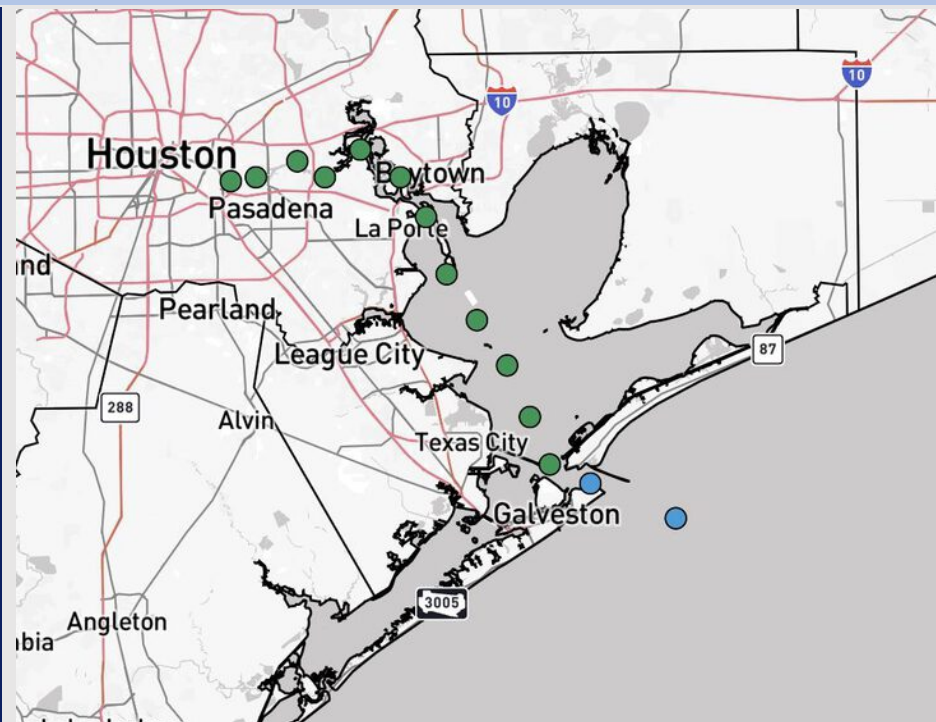
Updated: 11:45 AM CT

Saturday, October 4, 2025

Forecaster: Lydia Purlee

Weather Headlines

- A few pop-up showers and storms will be possible for all Stations over the next 48 hours.
- **Winds gusts between 20 – 25 kts will be possible over the next 72 hours.**
- Waves are expected to reach 3 – 4' at the Boarding Station through 7PM Sunday.



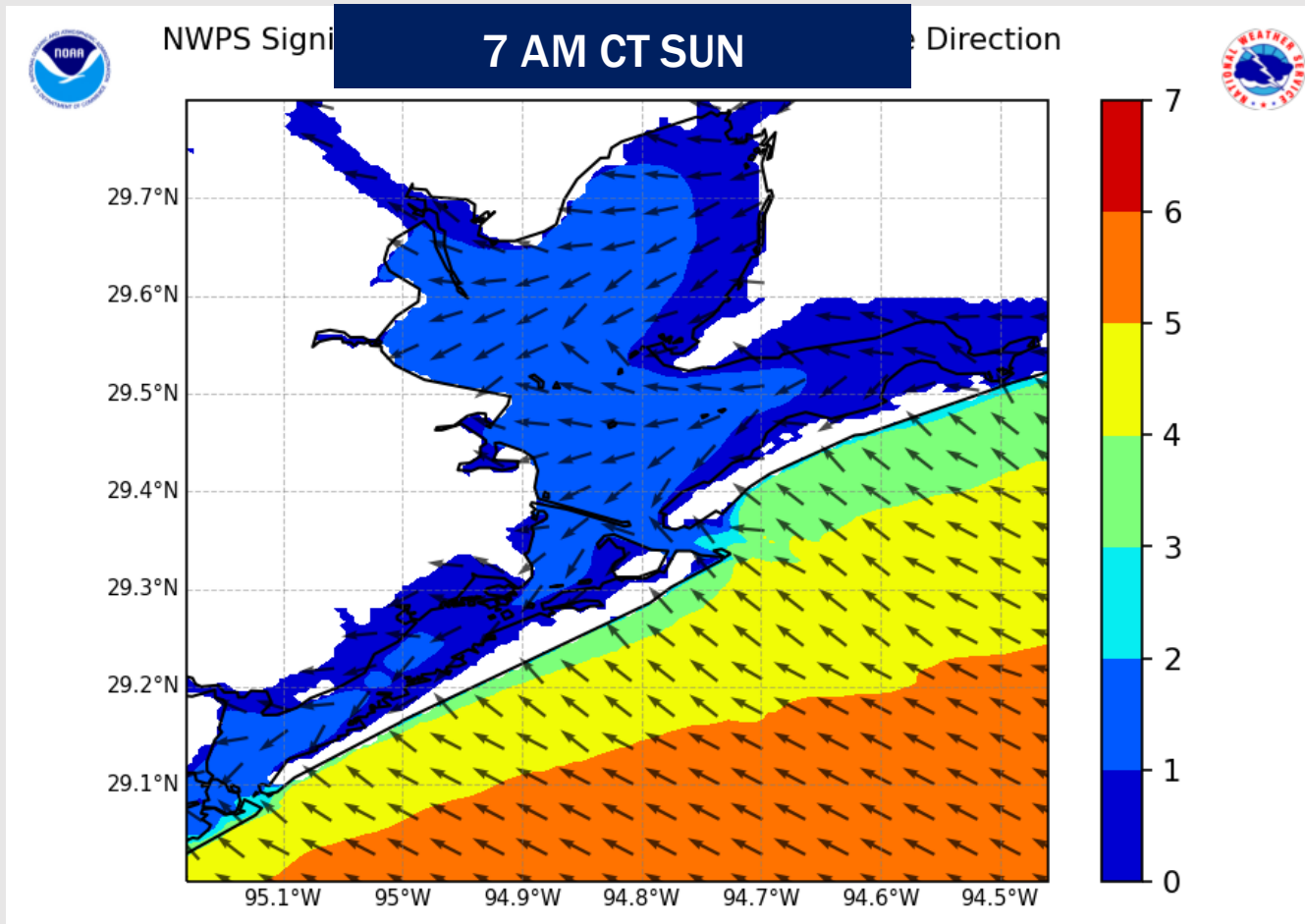
Current Radar: 11:45 AM CT

As always, please do not hesitate to reach out to us with any forecast questions at **(317)-560-8122**. Press 1 for forecast questions.

You can also access real-time forecast updates and 24/7 meteorological chat assistance on your **Clarity** app. Click [here](#) for login assistance.



Wave Height Forecast Update



Choppy waters/wave heights of 3-4' are expected to continue until 7 PM SUN.

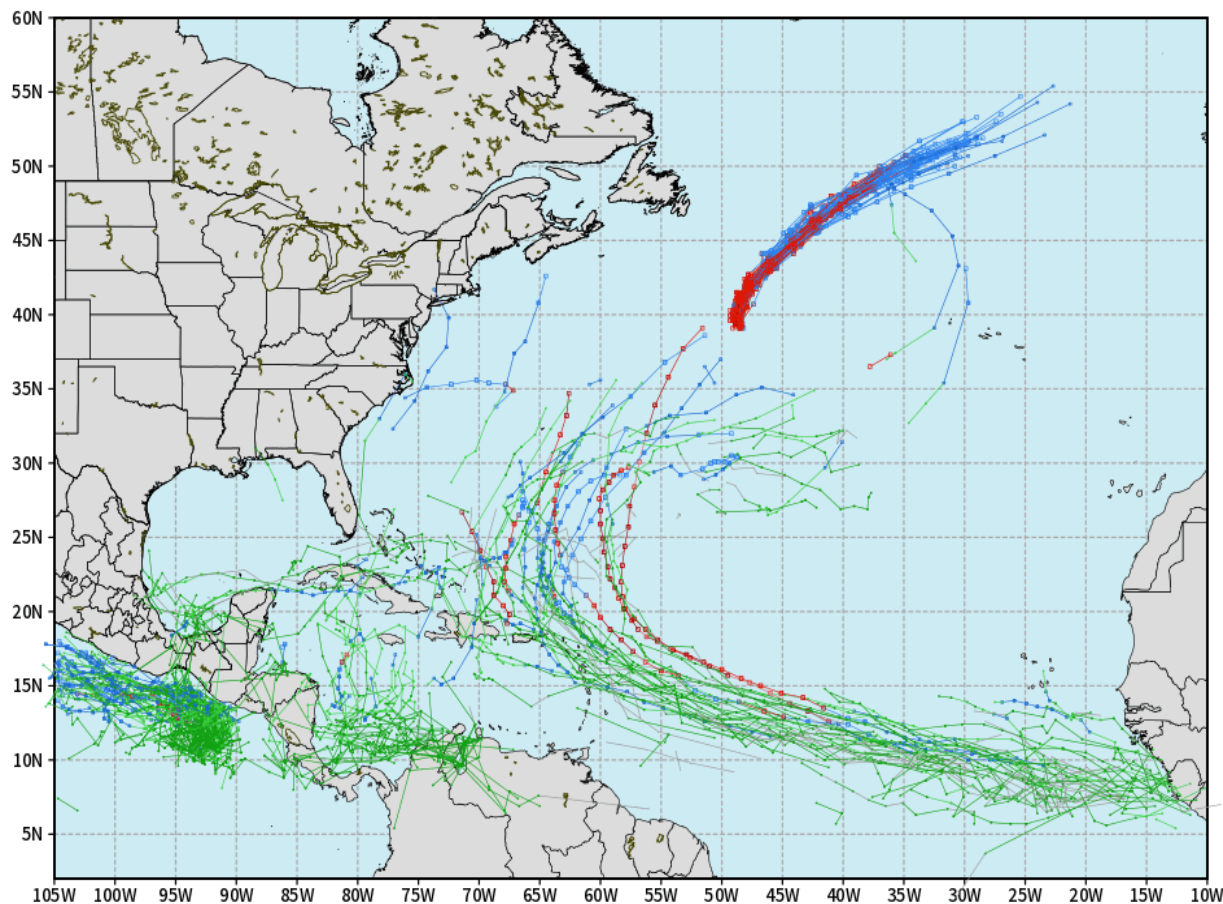
Wave heights are favored to peak near 4' at the Boarding Station at 7AM SUN.

Houston Pilots Tropical Update

10-Day Tropical Outlook

ECMWF ATLANTIC EPS Cyclone Locations --> Next [10-days]
INIT: 00Z04OCT2025 --> UNTIL 00Z24OCT2025

o-o ENSEMBLE MEAN
o-o 1000 - 1010 hPa
o-o 980 - 999 hPa
o-o 960 - 979 hPa
o-o 950 - 959 hPa
o-o < 950 hPa



weathermodels.com

A tropical wave has developed off the coast of Florida and is expected to move into the Eastern portion of the Gulf. However, the likelihood of this wave become a tropical depression is low, and no impacts are favored currently.

We are currently monitoring an additional tropical wave off the coast of Africa however this system is favored to recurve into the Atlantic at this time.

Houston Pilots Visibility Chart (miles)



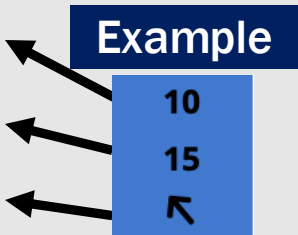
Visibility	Sat 12 pm	Sat 1 pm	Sat 2 pm	Sat 3 pm	Sat 4 pm	Sat 5 pm	Sat 6 pm	Sat 7 pm	Sat 8 pm	Sat 9 pm	Sat 10 pm	Sat 11 pm	Sun 12 am	Sun 1 am	Sun 2 am	Sun 3 am	Sun 4 am	Sun 5 am	Sun 6 am	Sun 7 am	Sun 8 am	Sun 9 am	Sun 10 am	Sun 11 am
Houston Pilots N - 610 Bridge	10	10	10	10	10	10	10	10	10	10	10	10	10	10	10	10	10	10	10	10	10	10	10	10
Houston Pilots M - Klnder 1	10	10	10	10	10	10	10	10	10	10	10	10	10	10	10	10	10	10	10	10	10	10	10	10
Houston Pilots L - Greens Bayou	10	10	10	10	10	10	10	10	10	10	10	10	10	10	10	10	10	10	10	10	10	10	10	10
Houston Pilots K - Shell Crude	10	10	10	10	10	10	10	10	10	10	10	10	10	10	10	10	10	10	10	10	10	10	10	10
Houston Pilots J - Lynchburg Ferries	10	10	10	10	10	10	10	10	10	10	10	10	10	10	10	10	10	10	10	10	10	10	10	10
Houston Pilots I - Exxon 3	10	10	10	10	10	10	10	10	10	10	10	10	10	10	10	10	10	10	10	10	10	10	10	10
Houston Pilots H - Morgans Point	10	10	10	10	10	10	10	10	10	10	10	10	10	10	10	10	10	10	10	10	10	10	10	10
Houston Pilots G - 75/76	10	10	10	10	10	10	10	10	10	10	10	10	10	10	10	10	10	10	10	10	10	9	9	10
Houston Pilots F - 63/64	10	10	10	10	10	10	10	10	10	10	10	10	10	10	10	10	10	10	10	10	10	9	9	9
Houston Pilots E - 51/52	10	10	10	10	10	10	10	10	10	10	10	10	10	10	10	10	10	10	10	10	10	9	9	9
Houston Pilots D - 37/38	10	10	10	10	10	10	10	10	10	10	10	10	10	10	10	10	10	10	10	10	10	9	9	9
Houston Pilots C - 25/26	10	10	10	10	10	10	10	10	10	10	10	10	10	10	10	10	10	10	10	10	10	9	9	9
Houston Pilots B - 11/12	10	10	10	10	10	10	10	10	10	10	10	10	10	10	10	10	10	10	10	10	10	9	9	9
Houston Pilots A - 1 & 2 Bravo	10	10	10	10	10	10	10	10	10	10	10	10	10	10	10	10	10	10	10	10	10	9	9	9

NOTE: This is automated data that may/may not agree with the official BAM thinking that's found on the daily slides or special visibility report slides. This data should be used as a guide only

Houston Pilots Wind Chart



Sustained Wind 10 Knots
Gusts 15 Knots
Wind from the SE



Wind	Sat 12 pm	Sat 1 pm	Sat 2 pm	Sat 3 pm	Sat 4 pm	Sat 5 pm	Sat 6 pm	Sat 7 pm	Sat 8 pm	Sat 9 pm	Sat 10 pm	Sat 11 pm	Sun 12 am	Sun 1 am	Sun 2 am	Sun 3 am	Sun 4 am	Sun 5 am	Sun 6 am	Sun 7 am	Sun 8 am	Sun 9 am	Sun 10 am	Sun 11 am
Houston Pilots N - 610 Bridge	10	9	10	10	10	10	9	8	8	8	8	8	8	8	8	8	8	9	9	9	10	10	10	10
	20	20	21	20	20	20	18	17	16	16	16	16	16	16	16	16	16	16	16	16	18	20	20	21
	↙	↙	↙	↙	↙	↙	↙	↙	↙	↙	↙	↙	↙	↙	↙	↙	↙	↙	↙	↙	↙	↙	↙	
Houston Pilots M - Kinder 1	10	9	10	10	10	10	9	8	8	8	8	9	9	9	8	8	8	9	9	10	10	10	10	10
	20	20	21	20	20	18	18	17	16	16	16	16	16	17	16	16	16	16	16	16	18	20	20	21
	↙	↙	↙	↙	↙	↙	↙	↙	↙	↙	↙	↙	↙	↙	↙	↙	↙	↙	↙	↙	↙	↙	↙	
Houston Pilots L - Greens Bayou	9	9	10	10	10	10	9	8	8	8	8	9	8	8	8	8	8	9	9	9	10	10	10	10
	20	20	21	20	20	18	18	17	16	16	16	17	17	17	17	17	16	17	16	17	18	21	20	20
	↙	↙	↙	↙	↙	↙	↙	↙	↙	↙	↙	↙	↙	↙	↙	↙	↙	↙	↙	↙	↙	↙	↙	
Houston Pilots K - Shell Crude	10	10	10	10	10	10	9	8	8	8	8	9	9	9	8	8	8	9	9	9	10	10	10	10
	20	20	21	20	20	18	18	17	17	17	17	18	18	17	17	17	17	17	17	17	20	21	20	20
	↙	↙	↙	↙	↙	↙	↙	↙	↙	↙	↙	↙	↙	↙	↙	↙	↙	↙	↙	↙	↙	↙	↙	
Houston Pilots J - Lynchburg Ferries	10	9	10	10	10	9	9	8	8	8	8	8	8	8	8	8	8	8	8	8	10	10	10	10
	18	18	20	20	20	18	18	17	16	16	16	17	17	17	17	17	17	17	17	17	20	21	20	20
	↙	↙	↙	↙	↙	↙	↙	↙	↙	↙	↙	↙	↙	↙	↙	↙	↙	↙	↙	↙	↙	↙	↙	
Houston Pilots I - Exxon 3	12	13	13	13	13	13	13	13	13	14	15	16	16	16	16	16	16	16	16	15	15	15	14	14
	20	20	21	21	21	20	20	18	18	21	22	23	23	23	23	23	23	23	23	22	22	22	21	21
	↙	↙	↙	↙	↙	↙	↙	↙	↙	↙	↙	↙	↙	↙	↙	↙	↙	↙	↙	↙	↙	↙	↙	
Houston Pilots H - Morgans Point	12	13	13	13	13	13	13	13	14	15	15	17	17	16	17	17	16	16	16	15	15	15	14	14
	20	20	21	21	21	20	20	18	20	22	23	24	24	24	24	24	23	23	23	22	22	22	21	21
	↙	↙	↙	↙	↙	↙	↙	↙	↙	↙	↙	↙	↙	↙	↙	↙	↙	↙	↙	↙	↙	↙	↙	
Houston Pilots G - 75/76	13	13	13	14	13	14	14	14	15	17	17	18	18	17	18	18	17	18	17	17	17	16	15	15
	21	21	22	22	22	22	21	21	22	24	24	25	26	26	26	26	26	26	25	24	24	24	24	24
	↙	↙	↙	↙	↙	↙	↙	↙	↙	↙	↙	↙	↙	↙	↙	↙	↙	↙	↙	↙	↙	↙	↙	
Houston Pilots F - 63/64	13	13	13	14	14	14	14	14	15	17	17	17	18	17	18	18	17	18	17	17	17	16	15	15
	21	21	22	22	22	22	21	21	22	24	24	25	26	26	26	26	26	26	25	25	25	24	24	24
	↙	↙	↙	↙	↙	↙	↙	↙	↙	↙	↙	↙	↙	↙	↙	↙	↙	↙	↙	↙	↙	↙	↙	
Houston Pilots E - 51/52	14	13	15	15	15	15	15	16	17	20	20	20	20	20	20	20	18	18	18	17	17	17	16	15
	22	22	22	22	22	23	23	23	24	26	28	29	29	29	26	28	26	26	25	25	25	24	24	23
	↙	↙	↙	↙	↙	↙	↙	↙	↙	↙	↙	↙	↙	↙	↙	↙	↙	↙	↙	↙	↙	↙	↙	
Houston Pilots D - 37/38	15	14	15	15	15	15	16	17	18	20	20	20	20	20	20	20	18	18	18	17	17	17	16	15
	22	22	24	23	22	23	23	24	25	28	29	29	29	29	28	28	26	26	25	25	25	24	24	23
	↙	↙	↙	↙	↙	↙	↙	↙	↙	↙	↙	↙	↙	↙	↙	↙	↙	↙	↙	↙	↙	↙	↙	
Houston Pilots C - 25/26	15	15	15	16	15	16	16	17	17	18	20	20	20	18	18	17	17	17	17	17	17	16	15	15
	22	22	24	23	22	23	24	24	25	26	28	28	28	26	26	26	25	25	24	24	25	24	24	23
	↙	↙	↙	↙	↙	↙	↙	↙	↙	↙	↙	↙	↙	↙	↙	↙	↙	↙	↙	↙	↙	↙	↙	
Houston Pilots B - 11/12	15	14	15	15	15	16	15	15	16	17	17	16	16	15	15	15	15	15	15	14	15	15	15	15
	22	22	24	23	22	24	24	24	25	26	26	26	26	26	25	25	24	24	24	23	23	23	23	22
	↙	↙	↙	↙	↙	↙	↙	↙	↙	↙	↙	↙	↙	↙	↙	↙	↙	↙	↙	↙	↙	↙	↙	
Houston Pilots A - 1 & 2 Bravo	17	17	17	17	17	17	17	17	20	21	22	22	22	21	21	20	20	20	18	17	17	17	17	17
	25	24	24	25	24	25	25	26	28	30	31	31	31	29	29	29	26	28	26	25	26	25	25	24
	↙	↙	↙	↙	↙	↙	↙	↙	↙	↙	↙	↙	↙	↙	↙	↙	↙	↙	↙	↙	↙	↙	↙	

NOTE: This is automated data that may/may not agree with the official BAM thinking that's found on the daily slides.
This data should be used as a guide only.

Houston Pilots: SAT. 10/4/2025

Forecast Discussion

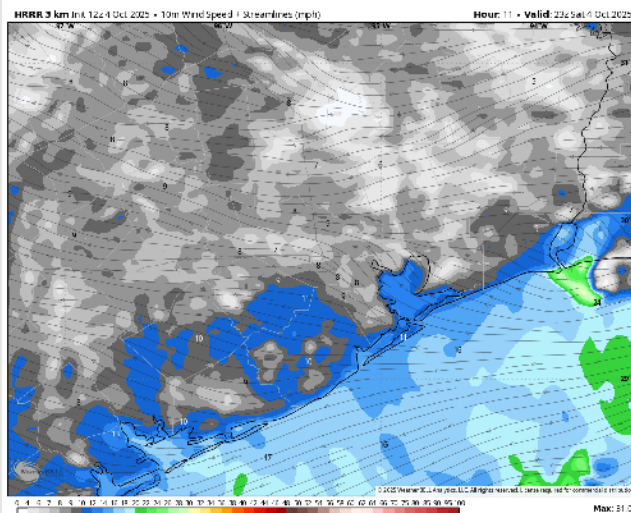
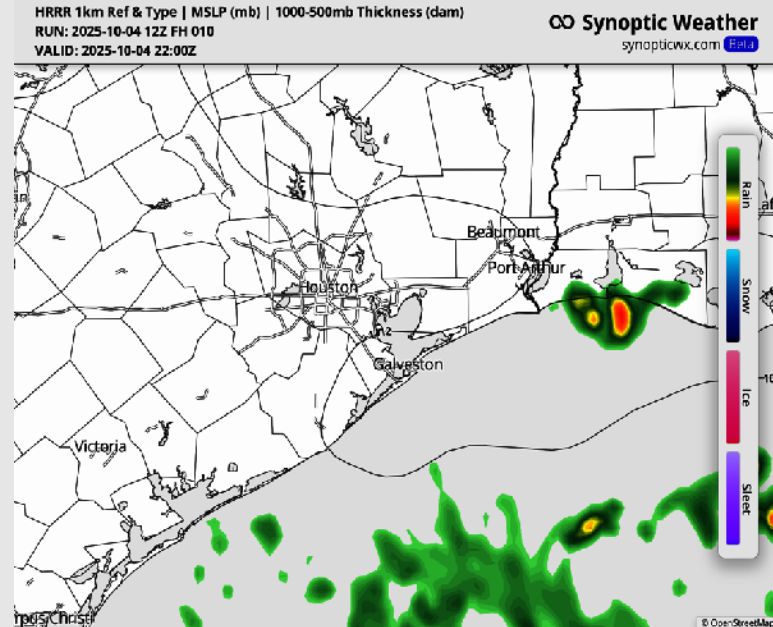
Precip: An isolated shower/storm will be possible today from 4 - 9 PM, especially for Stations S of Morgan's Point. However, all Stations are more likely to stay dry than not. Lightning will be a risk if a pop up does occur.

Wind: Winds will be out of the E/NE today. **N of Morgan's Point:** Winds will be at 4 - 9 kts. **S of Morgan's Point:** Winds will be at 15 - 19 kts. **Wind gusts between 25 - 30 kts will be possible for stations S of Morgan's Point at around 4 PM and into the overnight.**

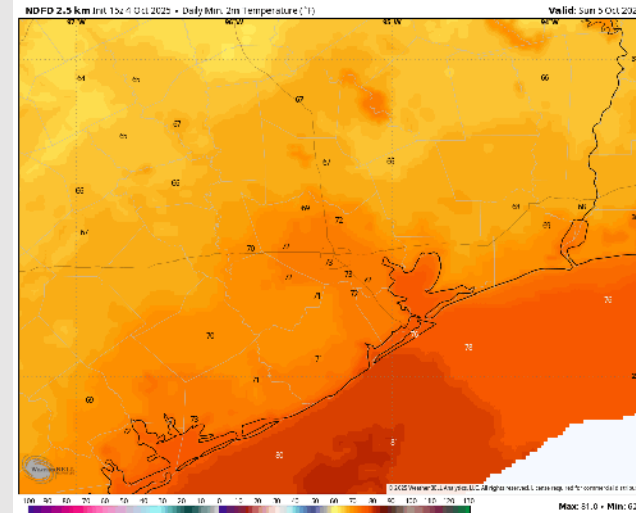
Low Temps: **N of Morgan's Point:** Low 70s F. **S of Morgan's Point:** Mid to high 70s F.

Visibility: No visibility concerns today except for a few heavy downpours.

Precip Image: 5 PM CT



Wind Speed:
6 PM CT



Low Temps
SUN AM

Houston Pilots: SUN. 10/5/2025

Forecast Discussion

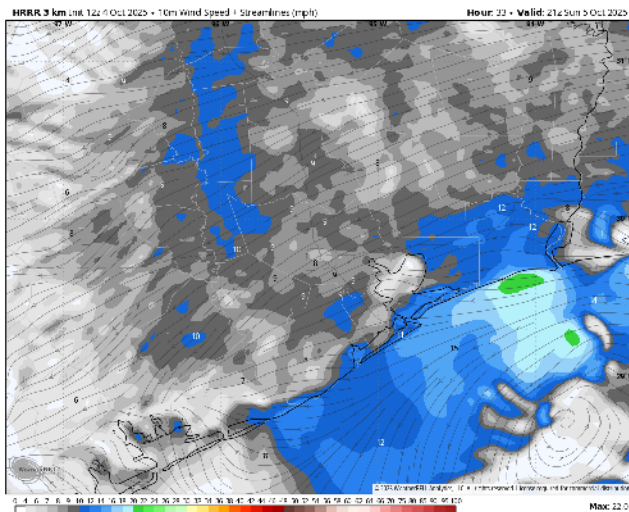
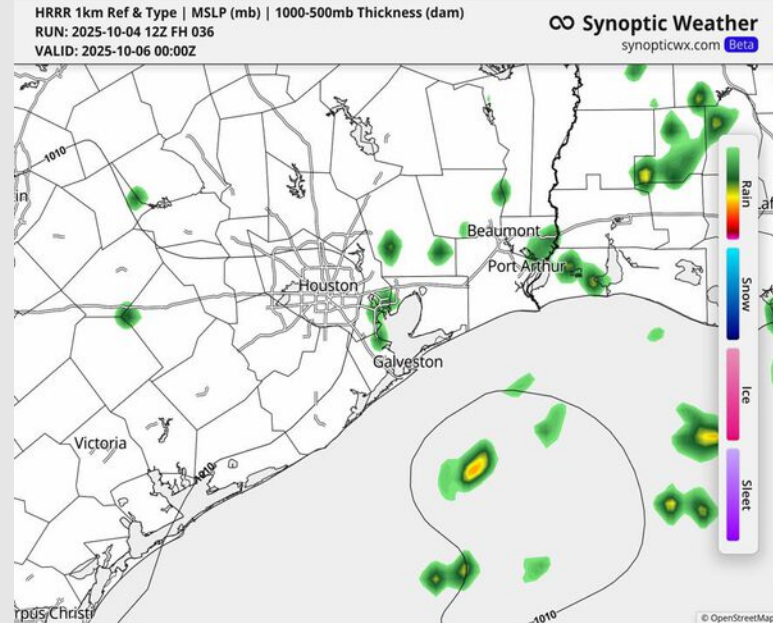
Precip: There is a low-end risk of isolated showers for Stations S of Morgan's Point from 3 AM – 3 PM Sunday. For all Stations, showers are possible from 4 PM – 9 PM.

Wind: Winds will be out of the E/NE Sunday. **N of Morgan's Point:** Winds will be at 3 – 8 kts. **S of Morgan's Point:** Winds will range from 15 – 18 kts through 3 PM before decreasing to 10 – 14 kts the rest of the day. **Non-thunderstorm wind gusts of 20 – 25 kts will be possible for stations S of Morgan's Point, especially before 3 PM.**

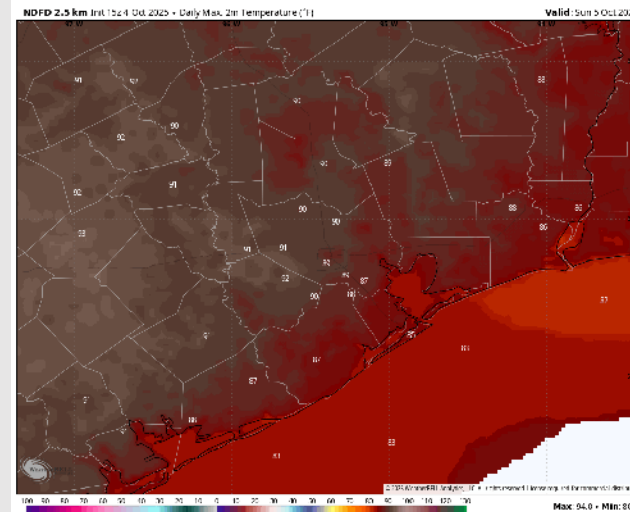
High Temps: **N of Morgan's Point:** High 80s to low 90s F. **S of Morgan's Point:** Mid to low 80s F.

Visibility: No visibility concerns Sunday.

Precip Image: 7 PM CT



Wind Speed:
4 PM CT



High Temps
Sunday

Houston Pilots: MON. 10/6/2025

Forecast Discussion

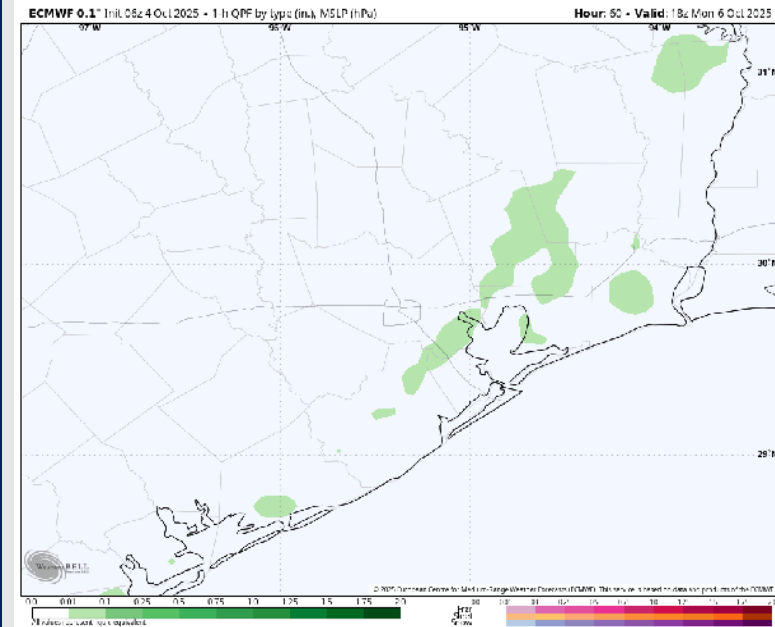
Precip: Hit/miss showers and storms possible for Stations S of Morgan's Point from 5 AM to 10 AM before the risk extends to all Stations. Precip risks then last through 8 PM. **Lightning and wind gusts of up to 20 kts are possible with a few storms.**

Wind: Winds will be variable until about 12 PM when winds settle to blow from the SE for the rest of the day. **N of Morgan's Point:** Winds will be at 3 – 7 kts. **S of Morgan's Point:** Winds will be at 5 – 10 kts.

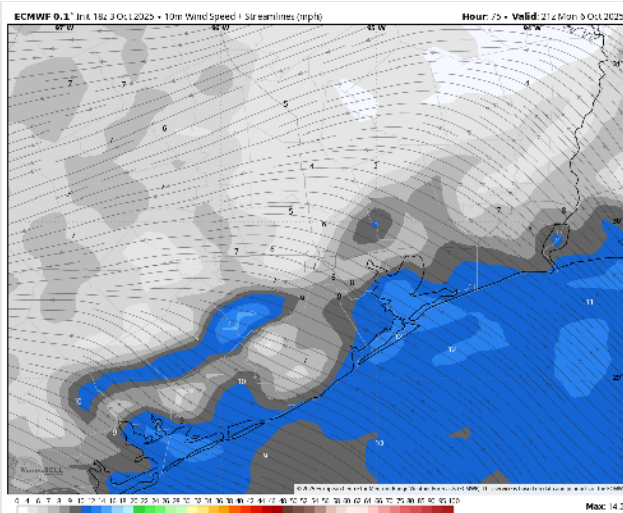
High Temps: **N of Morgan's Point:** High 80s to low 90s F. **S of Morgan's Point:** Mid to high 80s F.

Visibility: No fog concerns Monday however visibilities can be briefly reduced under heavy downpours.

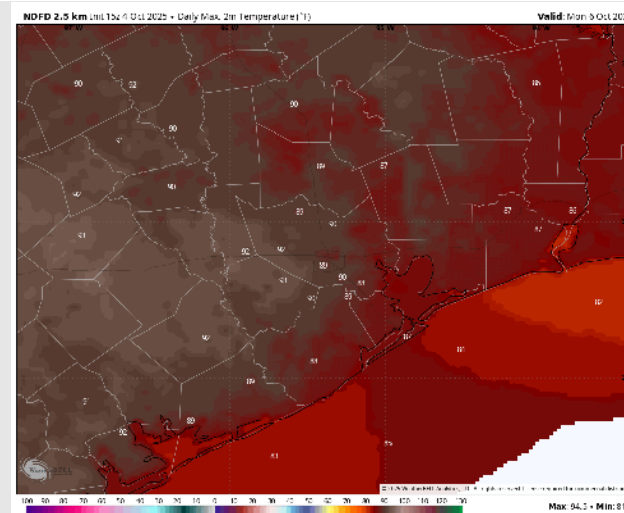
Precip Image: 1 PM CT



Wind Speed:
4 PM CT

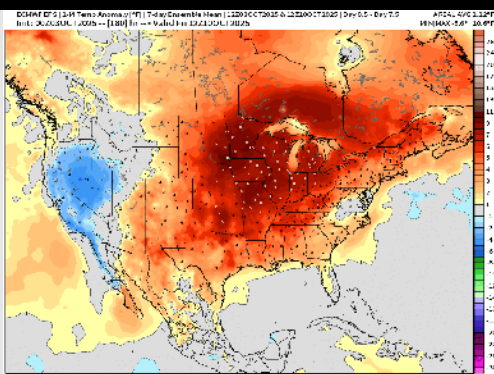


High Temps
Monday

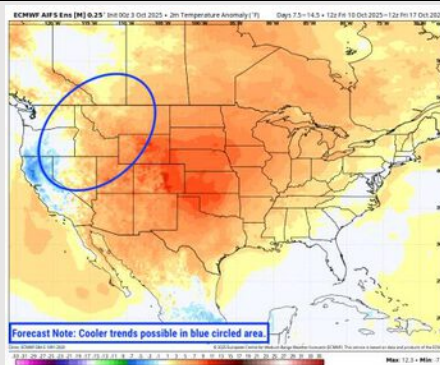


Houston Pilots: 10/4/25

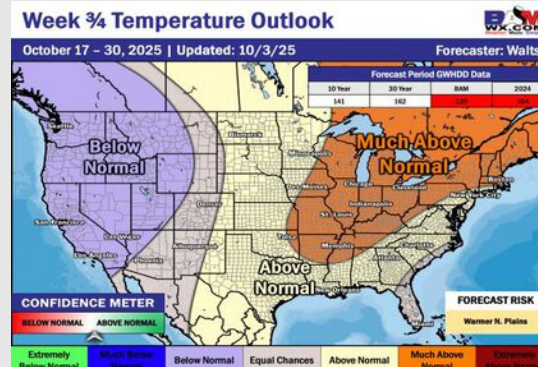
Next 7 Day Temperature Departure



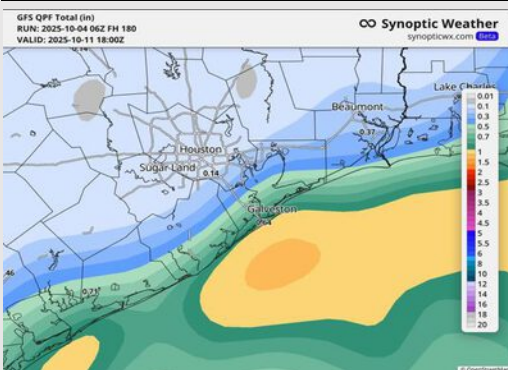
8-14 Day Temperature Departure



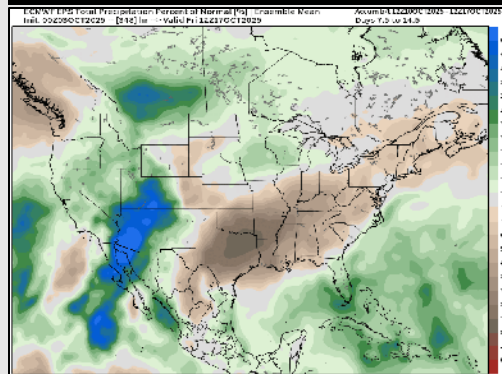
15-30 Day Temperature Departure



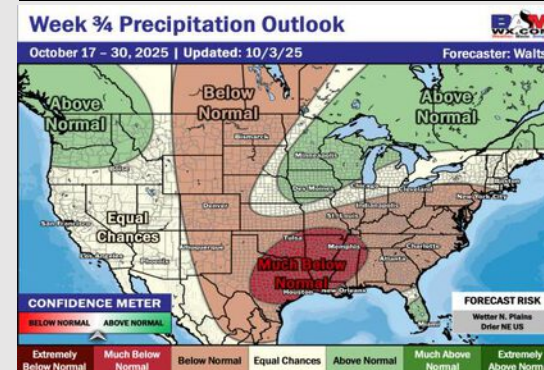
Next 7 Day Total Precipitation



8-14 Day % of Average Precip.



15-30 Day % of Average Precip.



- Temps are expected to be above normal for the next 7 days with minor rain chances for the weekend and better coverage and chances arriving by the start of next week.
- Above normal temperatures and below normal rain chances are favored for days 8 – 14.
- Above normal temperatures are favored for mid to late October with much below normal rainfall chances.