

# Houston Pilots Forecast Package



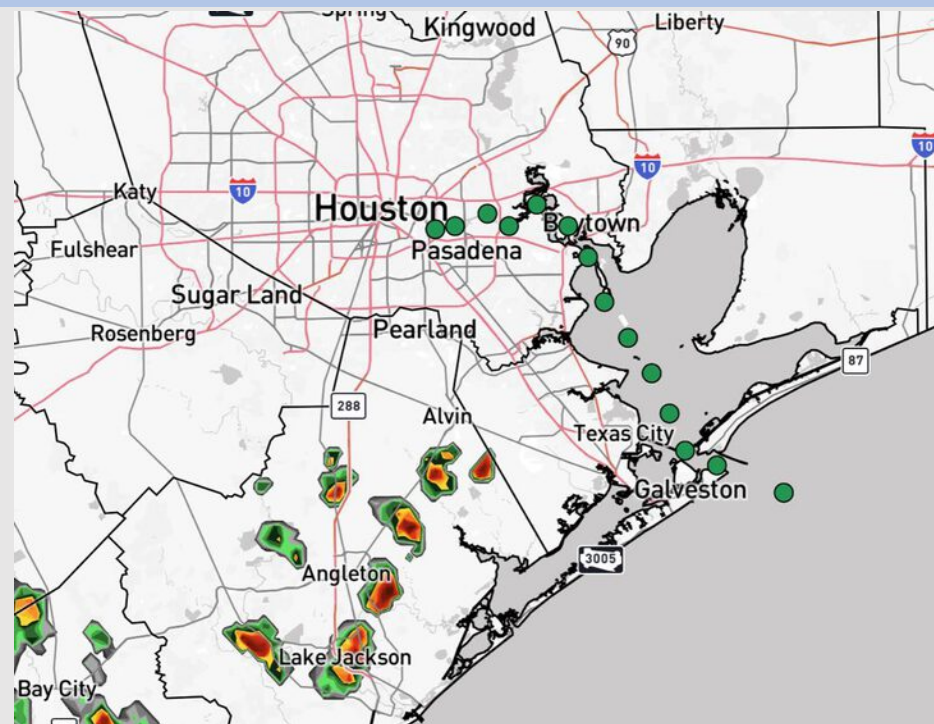
Updated: 2:25 PM CT

Monday, October 6, 2025

Forecaster: Hope Kleitsch

## Weather Headlines

- Isolated showers and storms will be possible at times over the next 72 hours, with mostly dry conditions favored.
- Isolated instances of patchy fog will be possible for Stations N. of Morgan's Point from 5AM to 8AM TUE. Visibilities reduced to 3 – 4 miles will be possible.



Current Radar: 2:25 PM CT

As always, please do not hesitate to reach out to us with any forecast questions at **(317)-560-8122**. Press 1 for forecast questions.

You can also access real-time forecast updates and 24/7 meteorological chat assistance on your **Clarity** app. Click [here](#) for login assistance.

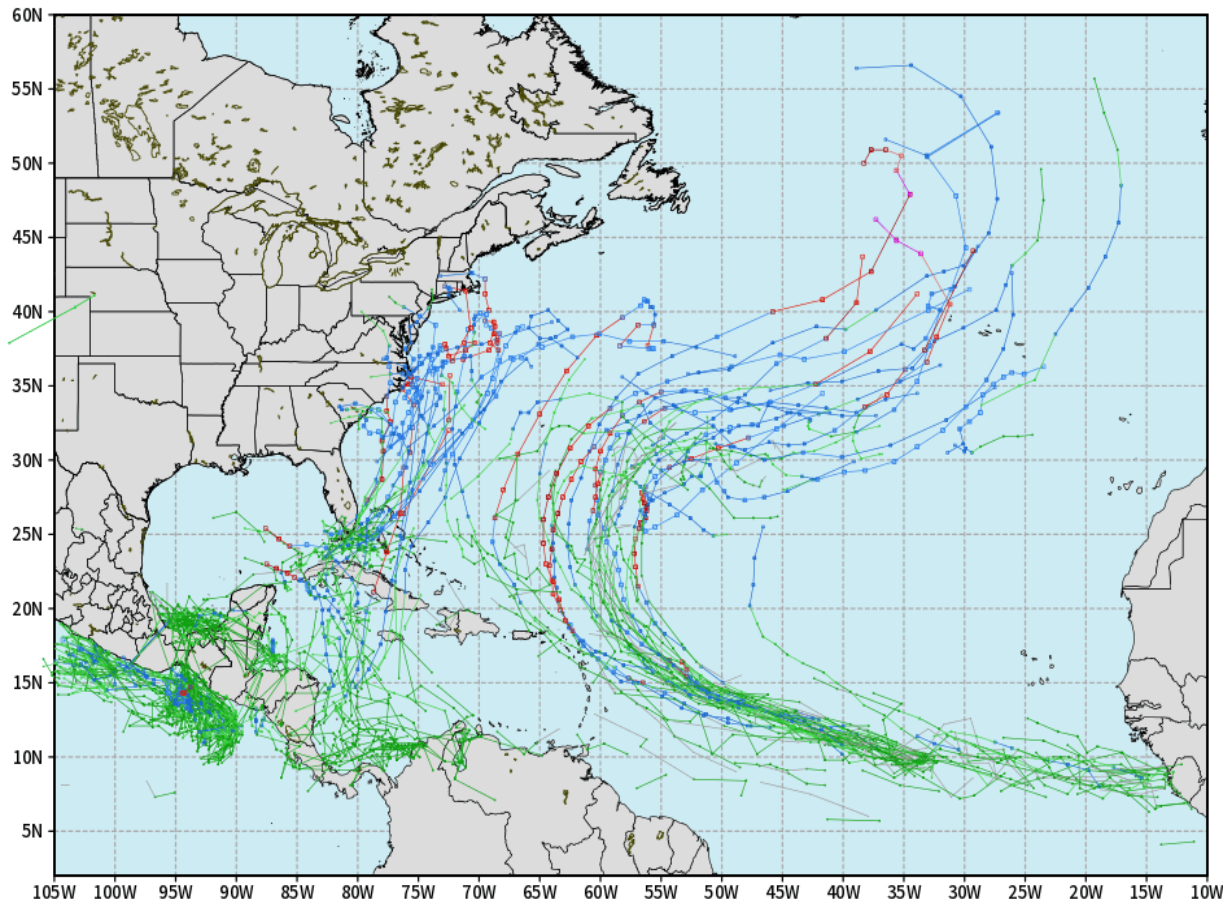


# Houston Pilots Tropical Update

## 10-Day Tropical Outlook

ECMWF ATLANTIC EPS Cyclone Locations --> Next [10-days]  
INIT: 00Z06OCT2025 --> UNTIL 00Z26OCT2025

o-o ENSEMBLE MEAN  
o-o 1000 - 1010 hPa  
o-o 980 - 999 hPa  
o-o 960 - 979 hPa  
o-o 950 - 959 hPa  
o-o < 950 hPa



[weathermodels.com](http://weathermodels.com)

Watching a low-end chance of development in the southern Gulf/near the Yucatan Peninsula. This is not anticipated to impact HOU.

We are currently monitoring an additional tropical wave off the coast of Africa however this system is favored to recurve into the Atlantic at this time.

# Houston Pilots Visibility Chart (miles)



Visibility	Mon 4 pm	Mon 5 pm	Mon 6 pm	Mon 7 pm	Mon 8 pm	Mon 9 pm	Mon 10 pm	Mon 11 pm	Tue 12 am	Tue 1 am	Tue 2 am	Tue 3 am	Tue 4 am	Tue 5 am	Tue 6 am	Tue 7 am	Tue 8 am	Tue 9 am	Tue 10 am	Tue 11 am	Tue 12 pm	Tue 1 pm	Tue 2 pm	Tue 3 pm
Houston Pilots N - 610 Bridge	10	10	10	10	10	10	10	10	10	10	10	10	9	7.9	6.9	5.9	4.9	3.9	6.9	10	10	10	10	10
Houston Pilots M - Kinder 1	10	10	10	10	10	10	10	10	10	10	10	10	9	7.9	6.9	5.9	4.9	3.9	6.9	10	10	10	10	10
Houston Pilots L - Greens Bayou	10	10	10	10	10	10	10	10	10	10	10	10	9	7.9	6.9	5.9	4.9	3.9	6.9	10	10	10	10	10
Houston Pilots K - Shell Crude	10	10	10	10	10	10	10	10	10	10	10	10	9	7.9	6.9	5.9	4.9	3.9	6.9	10	10	10	10	10
Houston Pilots J - Lynchburg Ferries	10	10	10	10	10	10	10	10	10	10	10	10	9	6.9	6.9	5.9	4.9	3.9	6.9	10	10	10	10	10
Houston Pilots I - Exxon 3	10	10	10	10	10	10	10	10	10	10	10	10	9	7.9	6.9	5.9	4.9	3.9	6.9	10	10	10	10	10
Houston Pilots H - Morgans Point	10	10	10	10	10	10	10	10	10	10	10	10	9	7.9	6.9	5.9	4.9	3.9	6.9	10	10	10	10	10
Houston Pilots G - 75/76	10	10	10	10	10	10	10	10	10	10	10	10	9	7.9	6.9	6.9	6.9	3.9	6.9	10	10	10	10	10
Houston Pilots F - 63/64	10	10	10	10	10	10	10	10	10	10	10	10	9	7.9	6.9	6.9	6.9	3.9	6.9	10	10	10	10	10
Houston Pilots E - 51/52	10	10	10	10	10	10	10	10	10	10	10	10	10	7.9	6.9	6.9	6.9	4.9	6.9	10	10	10	10	10
Houston Pilots D - 37/38	10	10	10	10	10	10	10	10	10	10	10	10	10	7.9	7.9	6.9	6.9	4.9	6.9	10	10	10	10	10
Houston Pilots C - 25/26	10	10	10	10	10	10	10	10	10	10	10	10	10	7.9	7.9	6.9	6.9	4.9	6.9	10	10	10	10	10
Houston Pilots B - 11/12	10	10	10	10	10	10	10	10	10	10	10	10	10	7.9	7.9	7.9	7.9	4.9	6.9	9	10	10	10	10
Houston Pilots A - 1 & 2 Bravo	10	10	10	10	10	10	10	10	10	10	10	9	9	7.9	7.9	7.9	7.9	4.9	6.9	9	10	10	10	10

**NOTE:** This is automated data that may/may not agree with the official BAM thinking that's found on the daily slides or special visibility report slides. This data should be used as a guide only

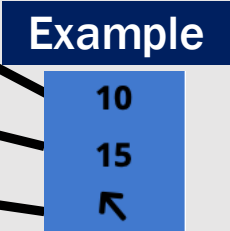
# Houston Pilots Wind Chart



Forecast Confidence



Sustained Wind 10 Knots  
Gusts 15 Knots  
Wind from the SE



Wind	Mon 4 pm	Mon 5 pm	Mon 6 pm	Mon 7 pm	Mon 8 pm	Mon 9 pm	Mon 10 pm	Mon 11 pm	Tue 12 am	Tue 1 am	Tue 2 am	Tue 3 am	Tue 4 am	Tue 5 am	Tue 6 am	Tue 7 am	Tue 8 am	Tue 9 am	Tue 10 am	Tue 11 am	Tue 12 pm	Tue 1 pm	Tue 2 pm	Tue 3 pm
Houston Pilots N - 610 Bridge	6 10 ↖	6 12 ↖	6 12 ↖	6 13 ↖	6 13 ↖	6 10 ↖	5 9 ↖	3 7 ↖	3 7 ↖	2 7 ↖	2 6 ↖	1 5 ↖	1 5 ↖	1 5 ↖	1 3 ↖	1 3 ↖	1 5 ↖	1 5 ↖	2 5 ↖	2 6 ↖	3 7 ↖	3 8 ↖	3 9 ↖	5 9 ↖
Houston Pilots M - Kinder 1	6 10 ↖	6 12 ↖	6 12 ↖	6 13 ↖	6 13 ↖	6 10 ↖	5 9 ↖	3 7 ↖	3 7 ↖	2 6 ↖	2 6 ↖	1 5 ↖	1 5 ↖	1 5 ↖	1 3 ↖	1 3 ↖	1 5 ↖	1 5 ↖	2 5 ↖	3 6 ↖	3 7 ↖	3 8 ↖	5 9 ↖	5 9 ↖
Houston Pilots L - Greens Bayou	6 10 ↖	6 12 ↖	6 12 ↖	6 13 ↖	6 13 ↖	6 10 ↖	3 9 ↖	3 7 ↖	3 7 ↖	2 6 ↖	2 5 ↖	1 5 ↖	1 5 ↖	1 3 ↖	1 3 ↖	1 3 ↖	1 5 ↖	1 5 ↖	2 5 ↖	2 6 ↖	3 7 ↖	3 7 ↖	3 8 ↖	5 9 ↖
Houston Pilots K - Shell Crude	6 10 ↖	6 12 ↖	6 12 ↖	6 12 ↖	6 12 ↖	5 10 ↖	3 9 ↖	3 7 ↖	3 7 ↖	2 6 ↖	2 6 ↖	1 5 ↖	1 5 ↖	1 5 ↖	1 3 ↖	1 3 ↖	1 3 ↖	1 5 ↖	2 5 ↖	3 6 ↖	3 7 ↖	3 7 ↖	3 9 ↖	5 9 ↖
Houston Pilots J - Lynchburg Ferries	6 10 ↖	6 10 ↖	6 12 ↖	6 13 ↖	6 13 ↖	5 10 ↖	3 9 ↖	3 7 ↖	2 7 ↖	2 6 ↖	2 5 ↖	1 5 ↖	1 3 ↖	1 3 ↖	1 3 ↖	1 3 ↖	1 3 ↖	1 3 ↖	1 5 ↖	2 6 ↖	3 7 ↖	3 7 ↖	3 8 ↖	3 9 ↖
Houston Pilots I - Exxon 3	8 13 ↖	8 14 ↖	8 14 ↖	9 14 ↖	9 14 ↖	8 13 ↖	8 10 ↖	7 9 ↖	6 8 ↖	6 8 ↖	6 8 ↖	5 7 ↖	3 7 ↖	3 7 ↖	3 6 ↖	3 6 ↖	3 7 ↖	3 7 ↖	3 6 ↖	5 7 ↖	5 8 ↖	5 9 ↖	6 9 ↖	6 10 ↖
Houston Pilots H - Morgans Point	8 13 ↖	8 14 ↖	8 14 ↖	8 14 ↖	9 14 ↖	8 13 ↖	8 10 ↖	7 9 ↖	6 8 ↖	6 8 ↖	6 8 ↖	5 7 ↖	3 7 ↖	3 7 ↖	3 6 ↖	3 6 ↖	3 7 ↖	3 7 ↖	3 6 ↖	5 8 ↖	5 8 ↖	6 9 ↖	6 9 ↖	6 12 ↖
Houston Pilots G - 75/76	7 13 ↖	8 14 ↖	8 14 ↖	8 14 ↖	9 14 ↖	8 13 ↖	8 12 ↖	8 10 ↖	7 10 ↖	7 9 ↖	7 9 ↖	6 8 ↖	6 7 ↖	5 7 ↖	5 7 ↖	5 7 ↖	5 7 ↖	5 7 ↖	5 8 ↖	6 8 ↖	5 8 ↖	5 9 ↖	6 9 ↖	6 10 ↖
Houston Pilots F - 63/64	7 13 ↖	8 14 ↖	8 14 ↖	8 14 ↖	8 14 ↖	8 13 ↖	8 10 ↖	7 10 ↖	7 10 ↖	7 9 ↖	7 9 ↖	6 8 ↖	6 7 ↖	6 7 ↖	5 7 ↖	5 7 ↖	5 7 ↖	5 7 ↖	5 8 ↖	6 9 ↖	5 9 ↖	5 9 ↖	5 9 ↖	5 10 ↖
Houston Pilots E - 51/52	7 13 ↖	8 13 ↖	8 13 ↖	8 13 ↖	8 13 ↖	8 12 ↖	7 10 ↖	7 10 ↖	7 10 ↖	7 9 ↖	7 9 ↖	6 8 ↖	6 8 ↖	6 7 ↖	5 7 ↖	5 7 ↖	5 7 ↖	5 7 ↖	5 8 ↖	6 9 ↖	5 9 ↖	5 9 ↖	5 9 ↖	5 10 ↖
Houston Pilots D - 37/38	6 12 ↖	7 12 ↖	8 13 ↖	8 13 ↖	8 13 ↖	8 10 ↖	7 10 ↖	7 10 ↖	7 10 ↖	7 9 ↖	7 9 ↖	6 8 ↖	6 8 ↖	6 7 ↖	5 7 ↖	5 7 ↖	5 7 ↖	5 7 ↖	5 8 ↖	6 8 ↖	5 9 ↖	5 9 ↖	6 9 ↖	6 10 ↖
Houston Pilots C - 25/26	6 10 ↖	7 12 ↖	7 12 ↖	7 12 ↖	8 12 ↖	7 10 ↖	7 10 ↖	7 10 ↖	7 10 ↖	7 9 ↖	7 9 ↖	6 8 ↖	6 8 ↖	6 7 ↖	5 7 ↖	5 7 ↖	5 7 ↖	5 7 ↖	5 8 ↖	6 9 ↖	5 9 ↖	5 9 ↖	6 9 ↖	6 10 ↖
Houston Pilots B - 11/12	6 10 ↖	6 12 ↖	6 12 ↖	6 12 ↖	6 12 ↖	6 10 ↖	6 10 ↖	6 10 ↖	6 10 ↖	6 9 ↖	6 9 ↖	6 8 ↖	5 8 ↖	5 8 ↖	3 7 ↖	3 7 ↖	3 7 ↖	3 7 ↖	3 8 ↖	5 8 ↖	5 9 ↖	5 9 ↖	6 9 ↖	6 10 ↖
Houston Pilots A - 1 & 2 Bravo	6 10 ↖	6 10 ↖	6 12 ↖	7 12 ↖	7 12 ↖	7 10 ↖	7 10 ↖	8 12 ↖	8 10 ↖	8 8 ↖	8 8 ↖	7 10 ↖	6 9 ↖	6 8 ↖	5 7 ↖	5 7 ↖	5 7 ↖	5 7 ↖	5 8 ↖	5 9 ↖	5 9 ↖	5 9 ↖	5 9 ↖	5 10 ↖

NOTE: This is automated data that may/may not agree with the official BAM thinking that's found on the daily slides.  
This data should be used as a guide only.



# Houston Pilots: MON. 10/6/2025

## Forecast Discussion

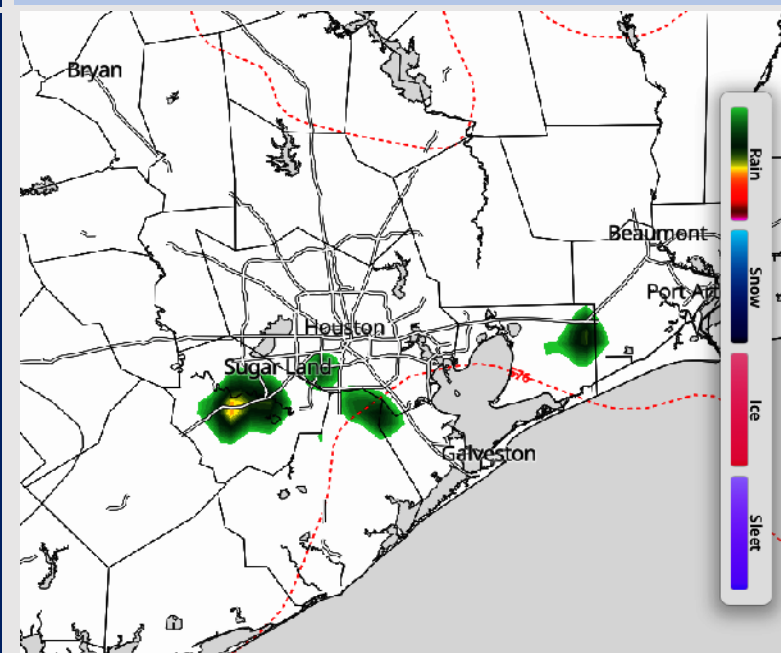
**Precip:** Isolated showers and storms possible for all Stations through 7PM, however most coverage is expected to stay West of Stations. **Lightning and wind gusts of 20 kts possible with storms.**

**Wind:** Winds will be out of the SE. **N of Morgan's Point:** Winds will be at 2 – 7 kts. **S of Morgan's Point:** Winds will be at 3 – 8 kts.

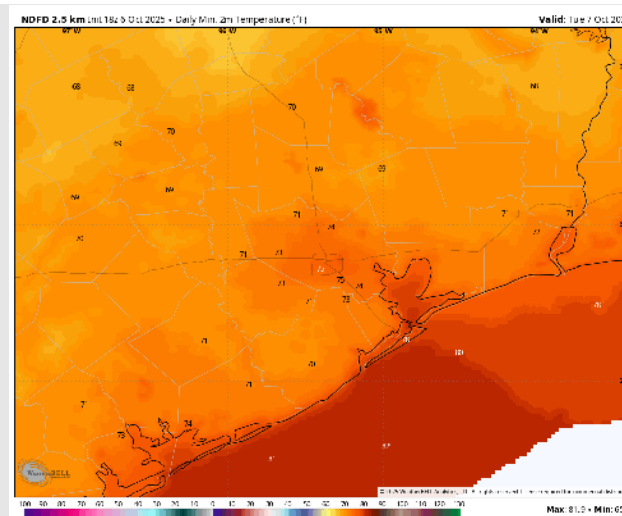
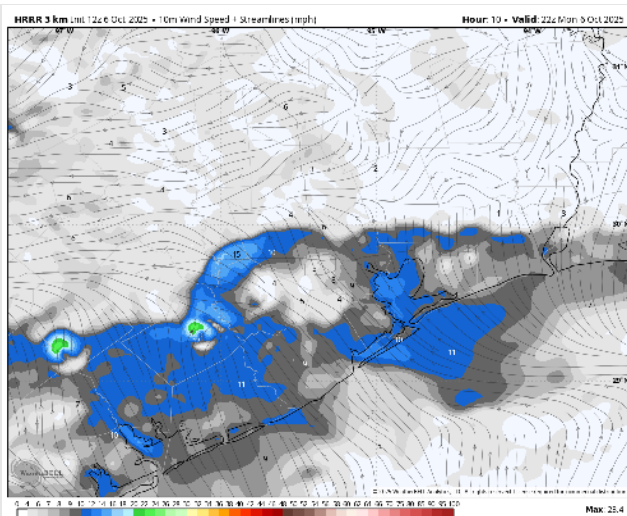
**Low Temps:** **N of Morgan's Point:** Mid 70s. **S of Morgan's Point:** High 70s F.

**Visibility:** No fog concerns for the rest of the day.

## Precip Image: 4 PM CT



**Wind Speed:**  
5 PM CT



**Low Temps**  
**TUE AM**

# Houston Pilots: TUE. 10/7/2025

## Forecast Discussion

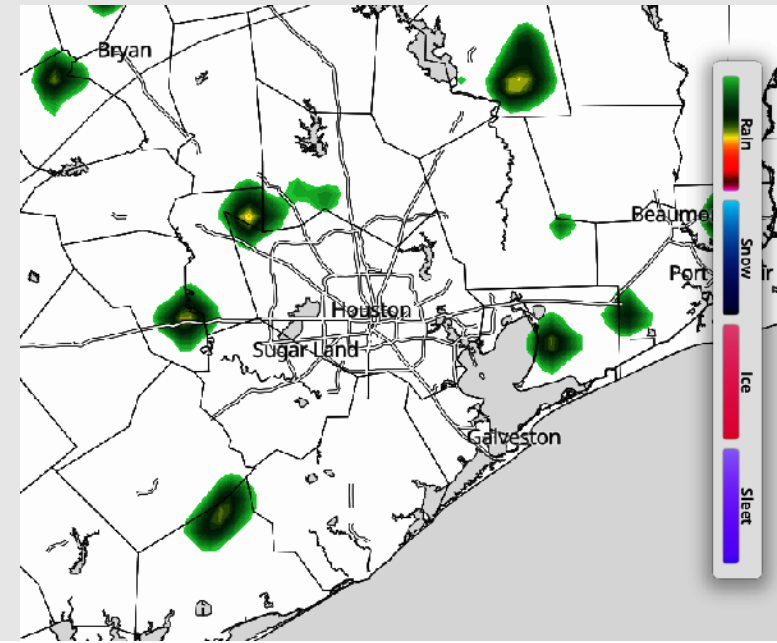
**Precip:** Isolated showers and storms possible for all Stations from 5 to 10 PM. **Localized lightning and wind gusts of 20 kts possible with storms.**

**Wind:** Winds will be variable throughout the day with the tendency to blow out of the NE, before settling to blow out of the E/SE by 3PM. **N of Morgan's Point:** Winds will be at 2 – 7 kts. **S of Morgan's Point:** Winds will be at 3 – 8 kts.

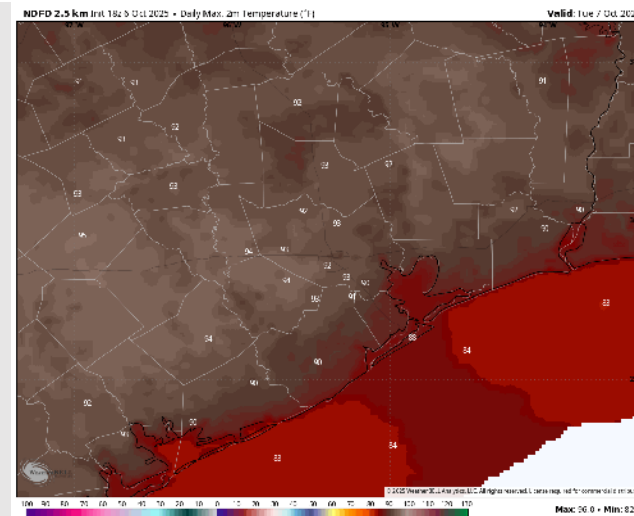
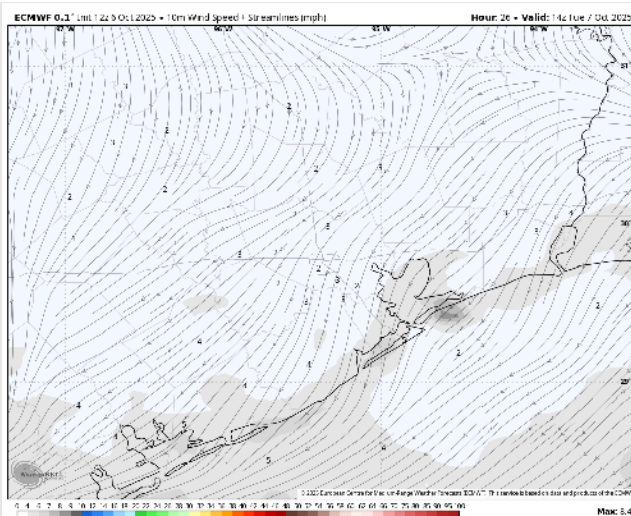
**High Temps:** **N of Morgan's Point:** Low 90s F. **S of Morgan's Point:** Upper 80s F.

**Visibility:** Isolated instances of patchy fog will be possible for Stations N. of Morgan's Point from 5AM to 8AM TUE. Visibilities reduced to 3 – 4 miles will be possible.

## Precip Image: 5 PM CT



**Wind Speed:**  
**9 AM CT**



**High Temps**  
**Tuesday**

# Houston Pilots: WED. 10/8/2025

## Forecast Discussion

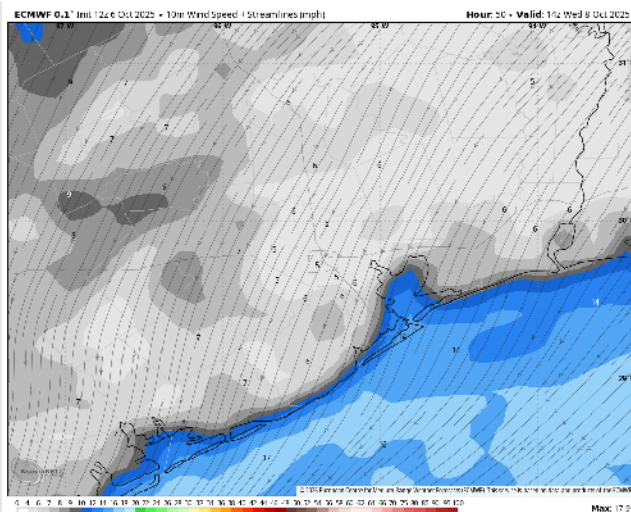
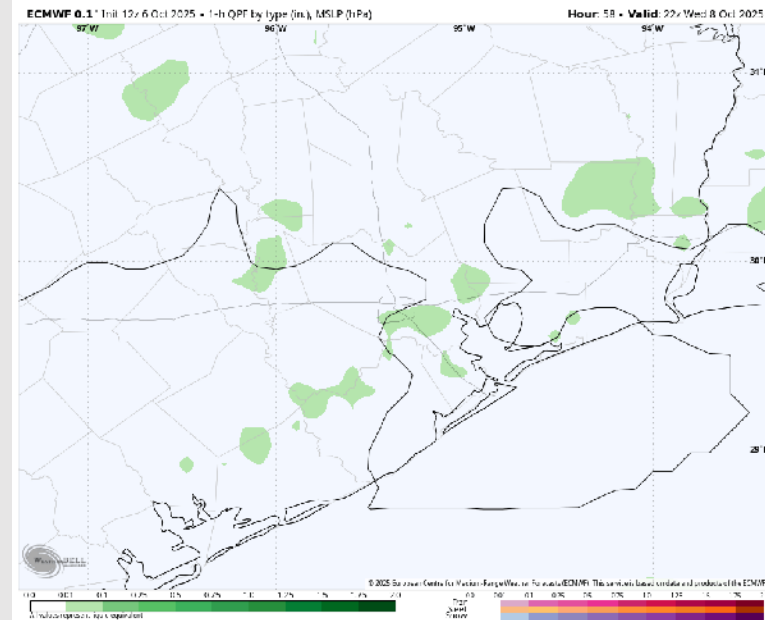
**Precip:** Isolated showers possible for Stations N. of 25/26 from 3PM to 7PM.

**Wind:** Winds will be out of the ENE throughout Wednesday.  
**N of Morgan's Point:** Winds will be at 2 – 7 kts. **S of Morgan's Point:** Winds will be at 6 – 11 kts.

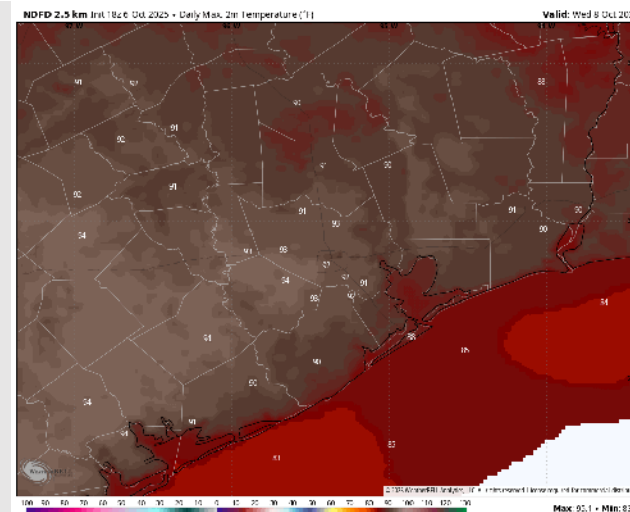
**High Temps:** **N of Morgan's Point:** Low 90s. **S of Morgan's Point:** High 80s F.

**Visibility:** No visibility concerns on Wednesday.

## Precip Image: 5 PM CT



**Wind Speed:**  
9 AM CT

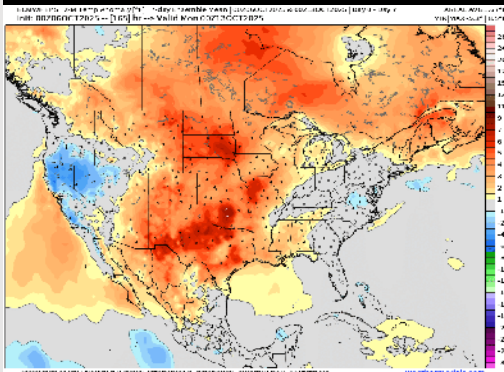


**High Temps**  
**Wednesday**

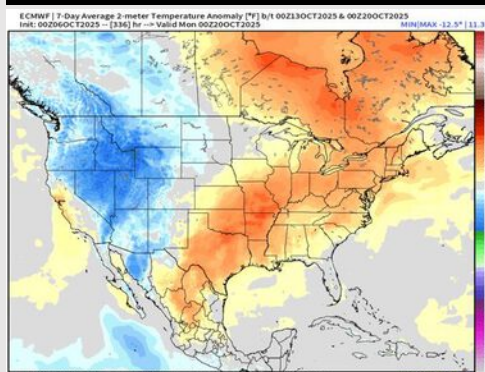


# Houston Pilots: 10/6/25

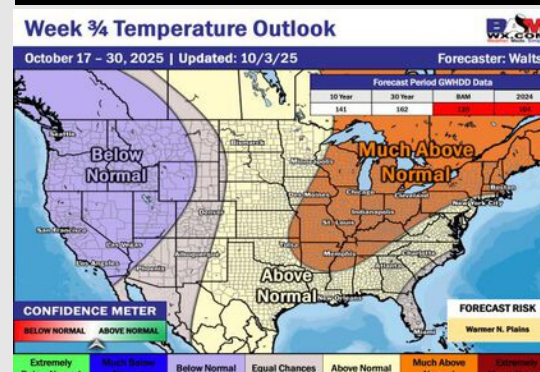
## Next 7 Day Temperature Departure



## 8-14 Day Temperature Departure



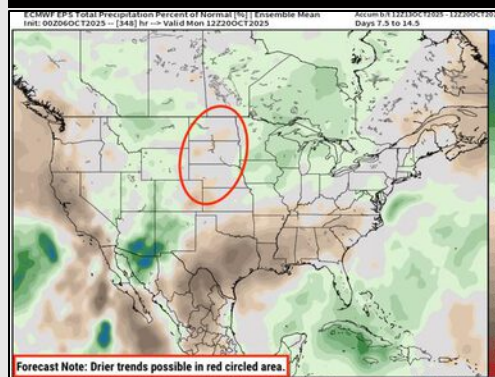
## 15-30 Day Temperature Departure



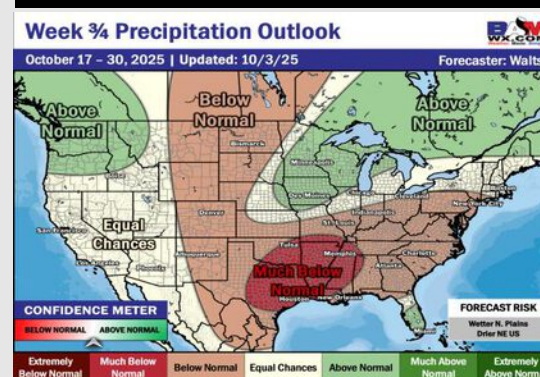
## Next 7 Day Total Precipitation



## 8-14 Day % of Average Precip.



## 15-30 Day % of Average Precip.



- Temps are expected to be above normal for the next 7 days with isolated rain chances throughout the week.
- Above normal temperatures and below normal rain chances are favored for days 8 – 14.
- Above normal temperatures are favored for mid to late October with much below normal rainfall chances.