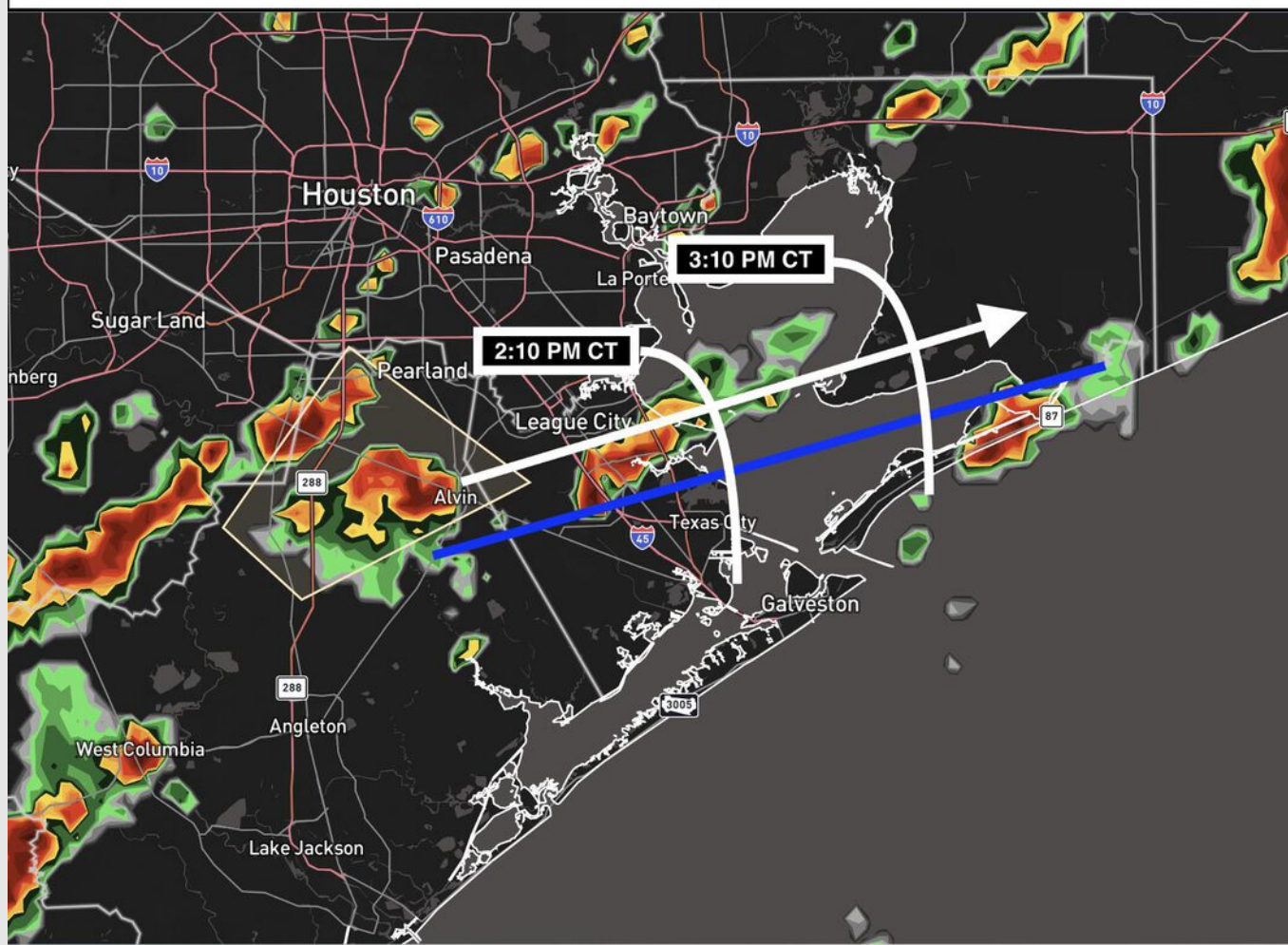


- ✓ **White Timing Area:** Times represent a general ETA of a strong storm shifting to the ~East around 17 mph. Wind gusts near 34 knots will be possible.
- ✓ **North of BLUE LINE:** Best potential to see the stronger wind gusts – areas further to the south will need to be monitored for additional development south of ongoing cell.
- ✓ Any of the cells this afternoon will need to be tracked for strong wind gusts of 34 knots with potentially higher.



Houston Pilots Forecast Package



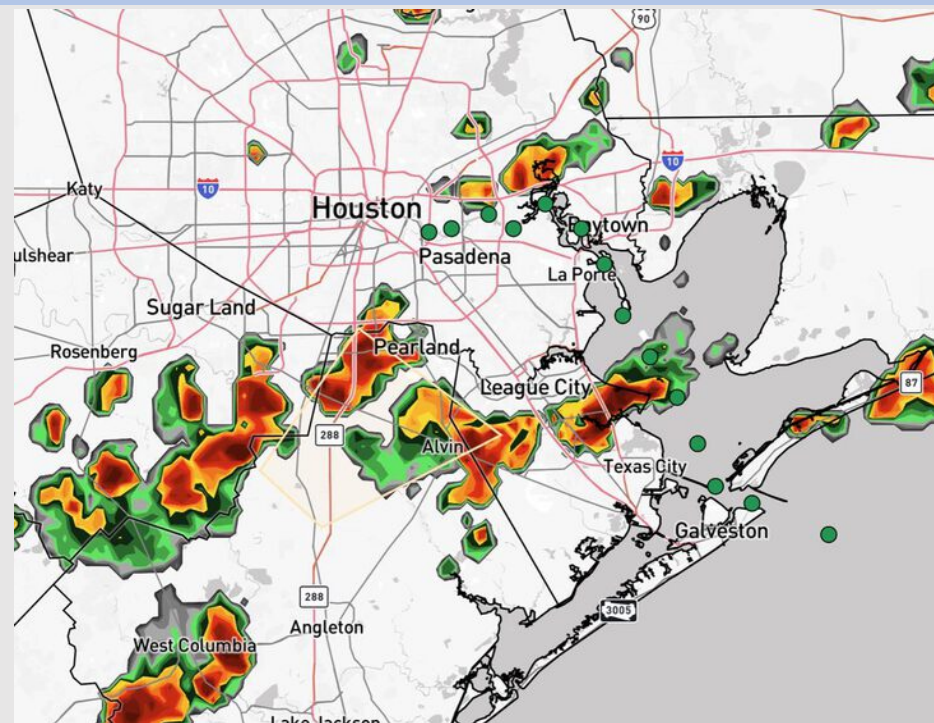
Updated: 1:30 PM CT

Wednesday, September 24, 2025

Forecaster: Hope Kleitsch

Weather Headlines

- A few strong to potentially severe storms will be possible today.
- Showers and storms will be possible for Stations S. of Morgan's Point Thursday AM.
- No tropical activity is favored in the Gulf over the next 7-10 days.



Current Radar: 1:26 PM CT

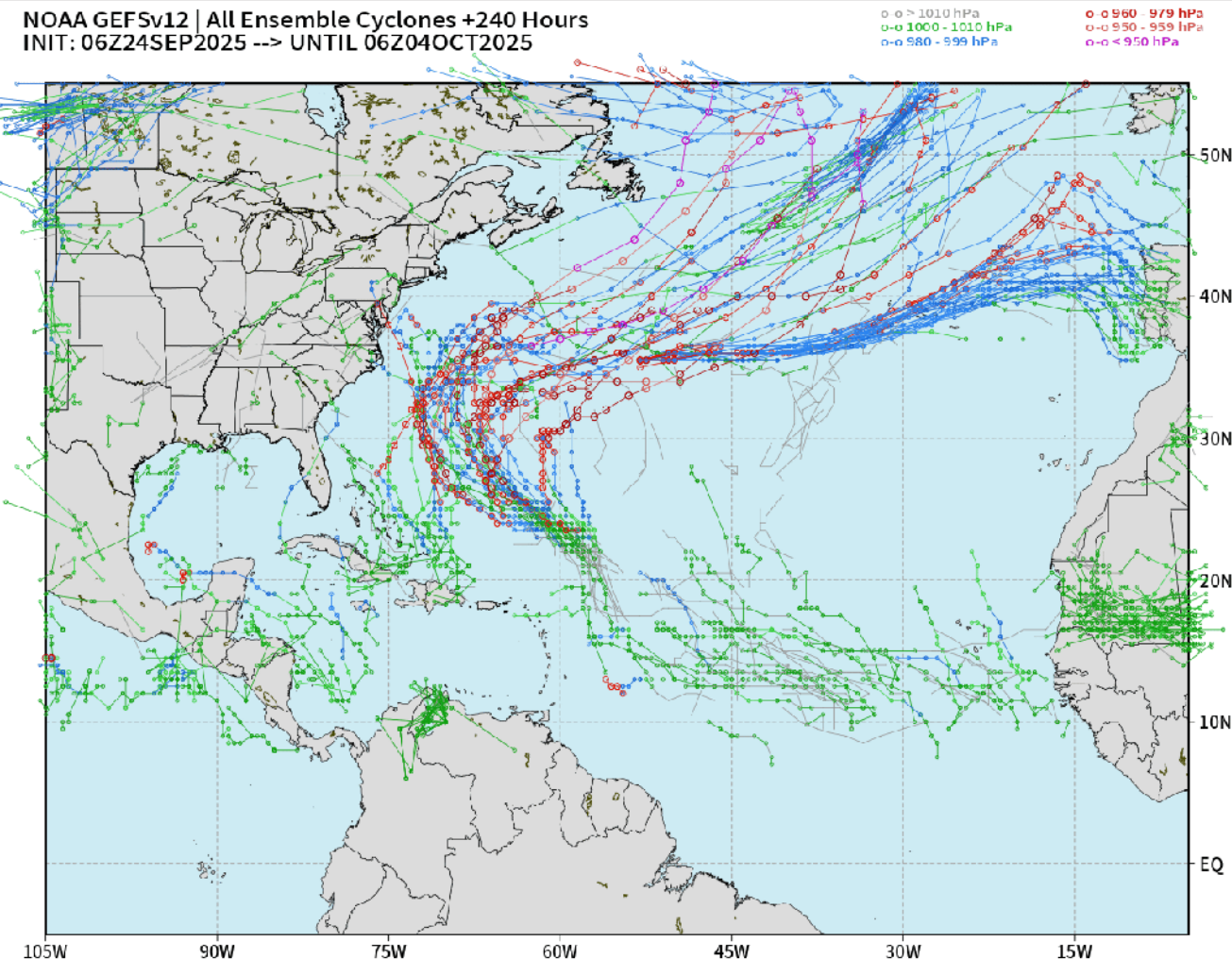
As always, please do not hesitate to reach out to us with any forecast questions at [\(317\)-560-8122](tel:317-560-8122). Press 1 for forecast questions.

You can also access real-time forecast updates and 24/7 meteorological chat assistance on your [Clarity](#) app. Click [here](#) for login assistance.



Houston Pilots Tropical Update

10-Day Tropical Outlook



No tropical development favored in the Gulf over the next 7-10 days.

Hurricane Gabrielle is favored to stay out in the Atlantic, away from the US East Coast.

Monitoring two additional waves behind Gabrielle, however these are also currently favored to stay along or off the US East Coast.

Houston Pilots Visibility Chart (miles)



Visibility	Wed 3 pm	Wed 4 pm	Wed 5 pm	Wed 6 pm	Wed 7 pm	Wed 8 pm	Wed 9 pm	Wed 10 pm	Wed 11 pm	Thu 12 am	Thu 1 am	Thu 2 am	Thu 3 am	Thu 4 am	Thu 5 am	Thu 6 am	Thu 7 am	Thu 8 am	Thu 9 am	Thu 10 am	Thu 11 am	Thu 12 pm	Thu 1 pm	Thu 2 pm
Houston Pilots N - 610 Bridge	10	10	10	10	10	10	9	10	10	10	10	10	10	10	10	10	10	9	9	10	10	10	10	10
Houston Pilots M - Kinder 1	10	10	10	10	10	10	9	10	10	10	10	10	10	10	10	10	10	9	9	10	10	10	10	10
Houston Pilots L - Greens Bayou	10	10	10	10	10	10	9	10	10	10	10	10	10	10	10	10	10	9	9	10	10	10	10	10
Houston Pilots K - Shell Crude	10	10	10	10	10	10	9	10	10	10	10	10	10	10	10	10	10	9	9	10	10	10	10	10
Houston Pilots J - Lynchburg Ferries	10	10	10	10	10	10	10	10	10	10	10	10	10	9	7.9	9	10	9	9	10	10	10	10	10
Houston Pilots I - Exxon 3	10	10	10	10	10	10	10	10	10	10	10	10	10	7.9	7.9	9	9	6.9	7.9	10	10	10	10	10
Houston Pilots H - Morgans Point	10	10	10	10	10	10	10	10	10	10	10	10	10	7.9	7.9	9	9	9	6.9	7.9	10	10	10	10
Houston Pilots G - 75/76	10	10	10	10	7.9	10	10	10	10	9	10	9	7.9	7.9	7.9	9	9	10	6.9	6.9	7.9	7.9	10	10
Houston Pilots F - 63/64	10	10	10	10	6.9	10	10	10	10	9	9	9	7.9	7.9	6.9	9	9	10	6.9	6.9	6.9	7.9	10	10
Houston Pilots E - 51/52	10	10	10	10	6.9	10	10	10	9	7.9	9	7.9	6.9	6.9	6.9	9	9	10	6.9	6.9	6.9	6.9	9	10
Houston Pilots D - 37/38	10	10	10	10	6.9	10	10	10	9	5.9	9	7.9	6.9	6.9	6.9	6.9	7.9	10	6.9	5.9	6.9	6.9	9	10
Houston Pilots C - 25/26	10	10	10	10	6.9	10	10	10	9	5.9	9	7.9	6.9	6.9	6.9	6.9	7.9	10	6.9	5.9	5.9	6.9	9	10
Houston Pilots B - 11/12	10	10	10	10	7.9	9	9	10	9	5.9	9	7.9	6.9	6.9	6.9	6.9	7.9	10	6.9	5.9	5.9	5.9	9	10
Houston Pilots A - 1 & 2 Bravo	10	10	10	10	10	10	9	10	9	7.9	7.9	9	6.9	6.9	6.9	7.9	9	10	6.9	5.9	5.9	5.9	9	10

NOTE: This is automated data that may/may not agree with the official BAM thinking that's found on the daily slides or special visibility report slides. This data should be used as a guide only

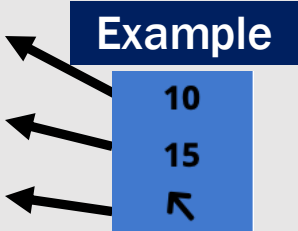
Houston Pilots Wind Chart



Forecast Confidence



Sustained Wind 10 Knots
Gusts 15 Knots
Wind from the SE



Wind	Wed 3 pm	Wed 4 pm	Wed 5 pm	Wed 6 pm	Wed 7 pm	Wed 8 pm	Wed 9 pm	Wed 10 pm	Wed 11 pm	Thu 12 am	Thu 1 am	Thu 2 am	Thu 3 am	Thu 4 am	Thu 5 am	Thu 6 am	Thu 7 am	Thu 8 am	Thu 9 am	Thu 10 am	Thu 11 am	Thu 12 pm	Thu 1 pm	Thu 2 pm
Houston Pilots N - 610 Bridge	7 14 →	6 14 →	6 13 ↗	6 13 ↘	6 12 →	5 12 ↑	3 9 ↗	3 8 ↗	3 7 ↗	3 7 →	3 7 ↘	3 8 ↘	3 8 ↘	3 8 ↘	5 9 ↘	5 9 ↘	5 9 ↘	5 10 ↘	6 10 ↘	6 12 ↘	6 13 ↘	6 13 ↘	6 13 ↘	6 14 ↘
Houston Pilots M - Kinder 1	7 14 →	6 14 →	6 13 ↗	6 13 ↘	6 12 →	5 10 ↑	3 9 ↗	3 8 ↗	3 7 ↗	3 7 →	3 7 ↘	3 8 ↘	3 8 ↘	3 8 ↘	5 9 ↘	5 9 ↘	5 9 ↘	6 10 ↘	6 10 ↘	6 12 ↘	6 13 ↘	6 13 ↘	6 13 ↘	6 14 ↘
Houston Pilots L - Greens Bayou	7 14 →	6 14 →	6 13 ↗	6 13 ↘	6 12 →	5 10 ↑	3 9 ↗	3 8 ↗	3 7 ↗	3 7 →	3 7 ↘	3 8 ↘	3 8 ↘	3 8 ↘	5 9 ↘	5 9 ↘	5 9 ↘	5 10 ↘	6 10 ↘	6 12 ↘	6 13 ↘	6 13 ↘	6 13 ↘	6 14 ↘
Houston Pilots K - Shell Crude	7 14 ↘	7 15 ↘	6 14 ↘	6 13 ↘	6 12 →	5 10 ↑	3 9 ↗	3 8 ↗	3 7 ↗	3 7 →	3 7 ↘	3 8 ↘	3 8 ↘	3 8 ↘	5 9 ↘	5 9 ↘	5 9 ↘	5 10 ↘	6 10 ↘	6 12 ↘	6 13 ↘	6 13 ↘	6 13 ↘	6 13 ↘
Houston Pilots J - Lynchburg Ferries	7 14 ↘	7 15 ↘	6 14 ↘	6 13 ↘	6 12 →	5 10 ↑	3 9 ↗	3 8 ↗	3 7 ↗	3 7 →	3 7 ↘	3 8 ↘	3 8 ↘	3 8 ↘	3 9 ↘	3 9 ↘	3 9 ↘	5 10 ↘	6 10 ↘	6 12 ↘	6 13 ↘	6 13 ↘	6 13 ↘	6 13 ↘
Houston Pilots I - Exxon 3	9 16 ↘	9 16 ↘	9 16 ↘	8 14 ↑	8 14 ↑	8 13 ↑	8 12 ↗	7 10 ↗	7 10 ↗	7 10 →	7 10 →	8 12 ↘	8 12 ↘	8 12 ↘	8 13 ↘	8 13 ↘	9 13 ↘	9 13 ↘	8 14 ↘	8 14 ↘	9 14 ↘	8 14 ↘	8 13 ↘	8 15 ↘
Houston Pilots H - Morgans Point	9 16 ↘	9 15 ↑	9 16 ↑	8 14 ↑	8 14 ↑	8 13 ↑	8 12 ↗	7 10 ↗	7 10 ↗	7 10 →	7 10 →	8 12 ↘	8 12 ↘	8 12 ↘	8 13 ↘	8 13 ↘	8 13 ↘	8 14 ↘	8 14 ↘	8 14 ↘	8 14 ↘	8 14 ↘	8 13 ↘	8 14 ↘
Houston Pilots G - 75/76	9 16 ↑	9 16 ↑	9 16 ↑	9 15 ↑	9 15 ↑	9 13 ↗	8 13 ↗	8 13 ↗	8 13 ↗	8 13 →	8 13 →	8 13 ↘	9 14 ↘	9 14 ↘	10 15 ↘	10 15 ↘	10 15 ↘	10 15 ↘	10 15 ↘	10 15 ↘	9 16 ↘	8 15 ↘	8 14 ↘	8 14 ↘
Houston Pilots F - 63/64	8 15 ↑	9 15 ↑	9 16 ↑	9 15 ↑	9 15 ↑	9 13 ↗	8 13 ↗	8 13 ↗	8 13 ↗	8 13 →	8 13 →	8 13 ↘	9 14 ↘	9 14 ↘	10 15 ↘	10 15 ↘	10 15 ↘	10 15 ↘	10 15 ↘	10 15 ↘	10 16 ↘	8 15 ↘	8 14 ↘	7 14 ↘
Houston Pilots E - 51/52	9 16 ↘	10 16 ↘	10 16 ↘	10 16 ↘	10 16 ↘	10 14 ↗	9 14 ↗	9 14 ↗	8 13 ↗	8 13 →	8 13 →	8 13 ↘	9 14 ↘	10 15 ↘	10 15 ↘	10 15 ↘	10 15 ↘	10 15 ↘	10 15 ↘	10 15 ↘	10 16 ↘	9 15 ↘	8 14 ↘	8 14 ↘
Houston Pilots D - 37/38	10 16 ↘	10 16 ↘	10 16 ↘	10 16 ↘	10 16 ↘	10 15 ↗	10 14 ↗	9 14 ↗	9 14 ↗	8 14 →	8 13 →	8 13 ↘	9 14 ↘	10 15 ↘	10 15 ↘	10 15 ↘	10 15 ↘	10 15 ↘	10 15 ↘	10 16 ↘	9 15 ↘	8 15 ↘	8 15 ↘	8 15 ↘
Houston Pilots C - 25/26	10 16 ↘	10 16 ↘	10 16 ↘	10 16 ↘	10 16 ↘	10 15 ↗	9 14 ↗	9 14 ↗	8 14 ↗	8 14 →	8 13 →	8 13 ↘	9 14 ↘	9 14 ↘	9 15 ↘	10 15 ↘	10 15 ↘	10 15 ↘	10 16 ↘	10 16 ↘	10 16 ↘	9 15 ↘	8 15 ↘	8 15 ↘
Houston Pilots B - 11/12	10 17 ↘	10 16 ↘	10 17 ↘	10 16 ↘	9 16 ↘	9 15 ↗	8 14 ↗	8 14 ↗	8 14 ↗	7 14 →	7 13 →	7 13 ↘	7 13 ↘	8 14 ↘	8 15 ↘	8 15 ↘	9 15 ↘	9 15 ↘	10 15 ↘	10 16 ↘	10 16 ↘	9 16 ↘	9 15 ↘	8 15 ↘
Houston Pilots A - 1 & 2 Bravo	10 17 ↘	10 17 ↘	10 17 ↘	10 17 ↘	10 17 ↘	10 16 ↗	10 16 ↗	10 16 ↗	10 15 ↗	10 15 →	9 15 →	9 14 ↘	10 15 ↘	10 15 ↘	10 15 ↘	12 16 ↘	12 17 ↘	12 17 ↘	13 17 ↘	13 17 ↘	12 17 ↘	10 16 ↘	10 16 ↘	9 16 ↘

NOTE: This is automated data that may/may not agree with the official BAM thinking that's found on the daily slides.
This data should be used as a guide only.

Houston Pilots: WED. 9/24/2025

Forecast Discussion

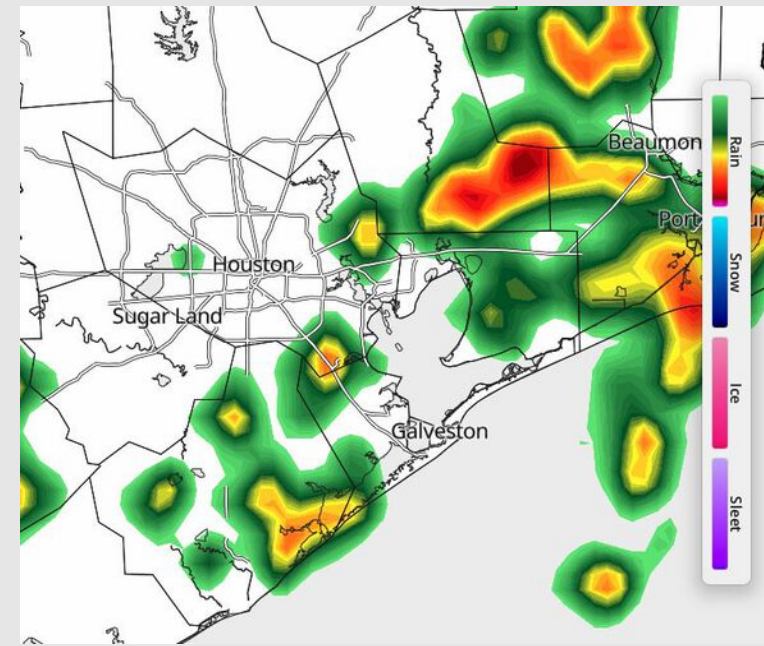
Precip: Scattered showers and storms will be possible through 8PM for all Stations, with dry conditions filling in behind. **Lightning and wind gusts of 35 – 45 kts will be possible with storms.**

Wind: Winds will be out of the S/SW through 6 PM before becoming variable for the rest of the day. **N of Morgan's Point:** Winds will be at 3 – 8 kts. **S of Morgan's Point:** Winds will be at 8 – 13 kts through 8 PM before decreasing to 4 – 9 kts.

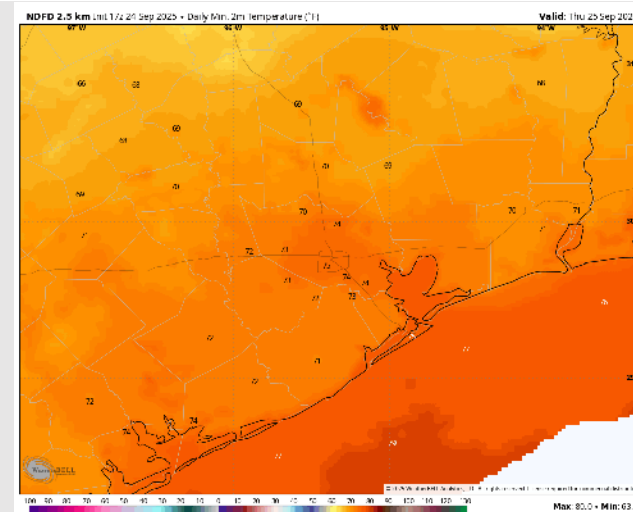
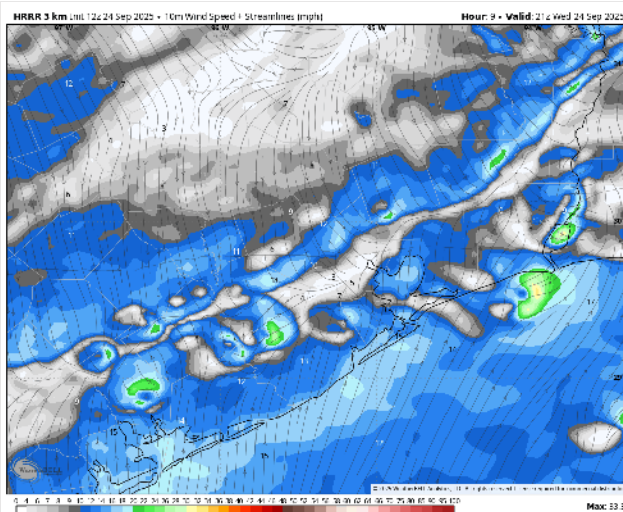
Low Temps: **N of Morgan's Point:** Mid 70s F. **S of Morgan's Point:** Mid 70s F.

Visibility: No fog concerns today, however, visibilities may be reduced under a heavier downpour.

Precip Image: 4 PM CT



Wind Speed:
4 PM CT



Low Temps
THU AM

Houston Pilots: THU. 9/25/2025

Forecast Discussion

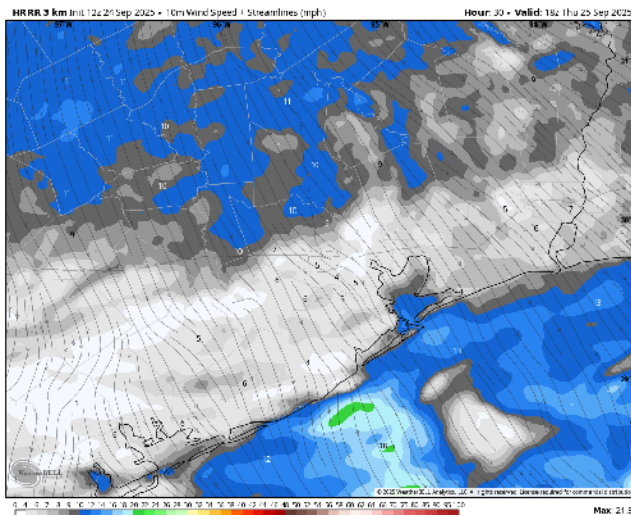
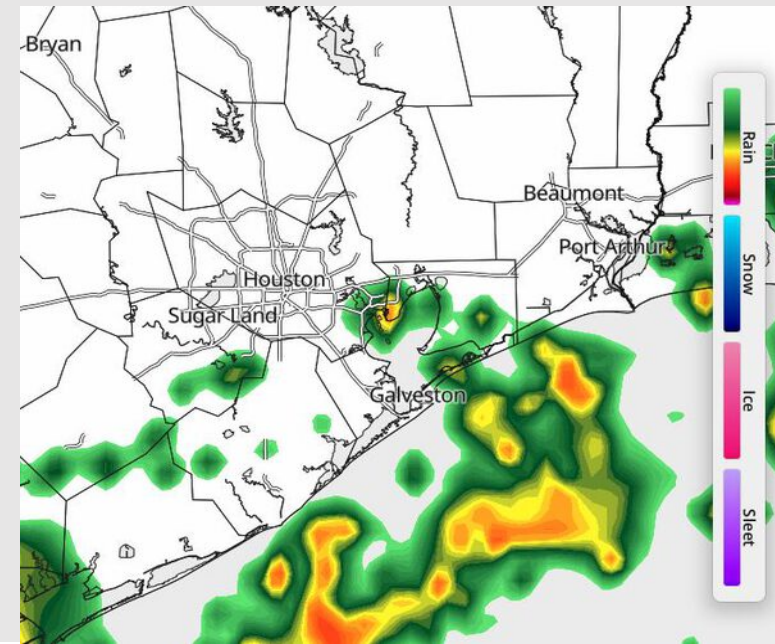
Precip: Scattered showers and a few thunderstorms will last through 7AM for Stations S of Morgan's Point. After 7AM, isolated shower chances will linger at the Boarding Station through 10AM, before dry conditions persist. **Lightning and brief wind gusts of 20 kts will be possible with storms.**

Wind: Winds will be variable through 6 AM before settling out of the N/NW. **N of Morgan's Point:** Winds will be at 2 – 7 kts. **S of Morgan's Point:** Winds will be at 6 – 11 kts.

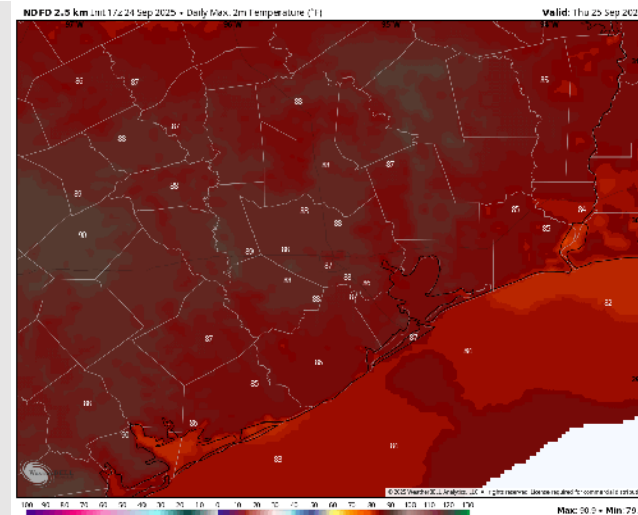
High Temps: **N of Morgan's Point:** Mid 80s F. **S of Morgan's Point:** Mid 80s F.

Visibility: No fog concerns Thursday however visibilities can be reduced under heavier downpours prior to 6 AM.

Precip Image: 5 AM CT



Wind Speed:
1 PM CT



High Temps
Thursday

Houston Pilots: FRI. 9/26/2025

Forecast Discussion

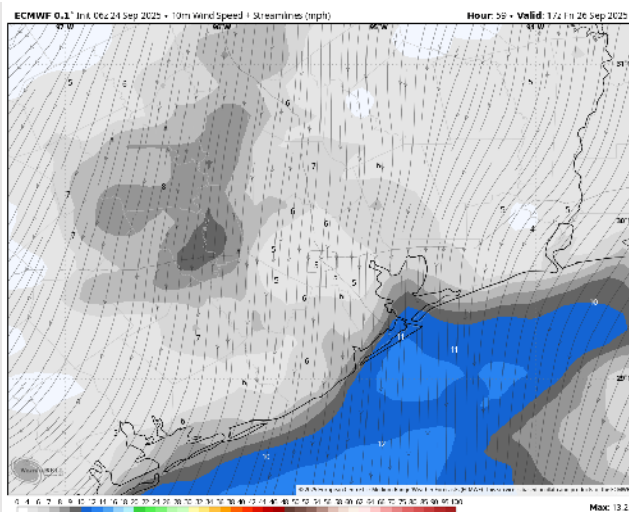
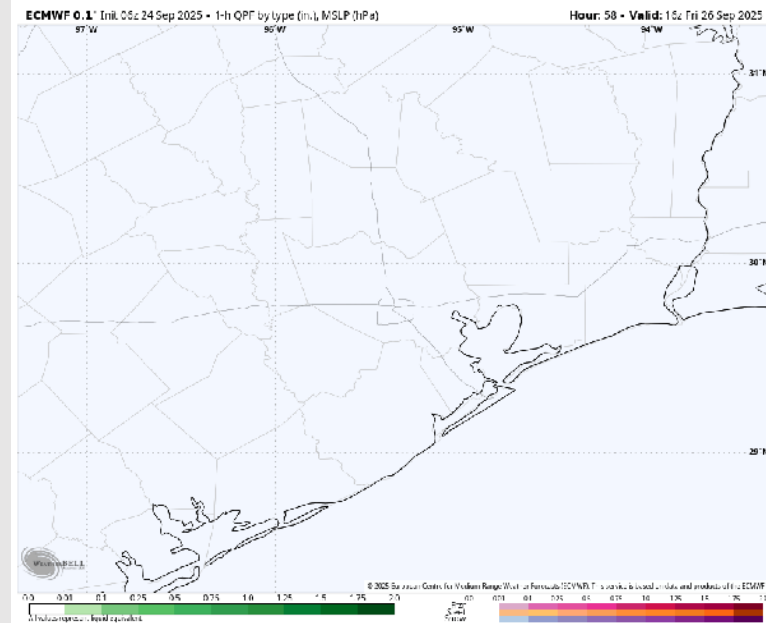
Precip: Dry conditions favored for Friday.

Wind: Winds will be out of the N/NE throughout the day. **N of Morgan's Point:** Winds will be at 2 – 7 kts. **S of Morgan's Point:** Winds will be at 6 – 11 kts through 2 PM before decreasing to 3 – 8 kts. **Wind gusts of 20 kts in play for Stations S of Morgan's Point through 10 AM.**

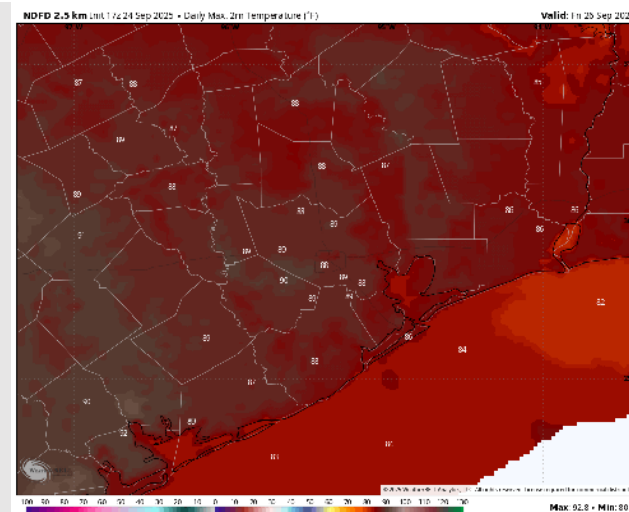
High Temps: **N of Morgan's Point:** Upper 80s F. **S of Morgan's Point:** Mid 80s F.

Visibility: No visibility concerns Friday.

Precip Image: 11 AM CT



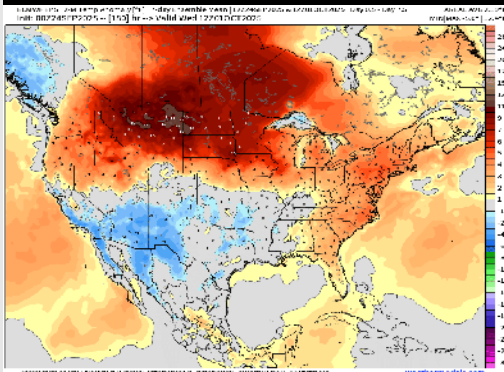
Wind Speed:
12 PM CT



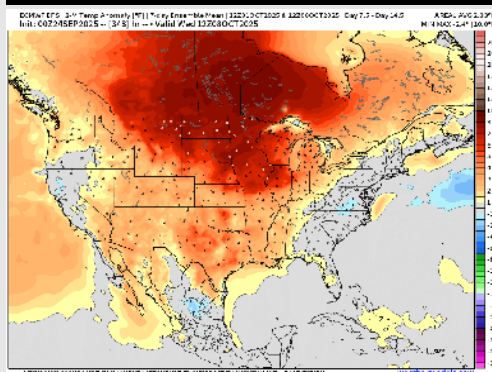
High Temps
Friday

Houston Pilots: 9/24/25

Next 7 Day Temperature Departure

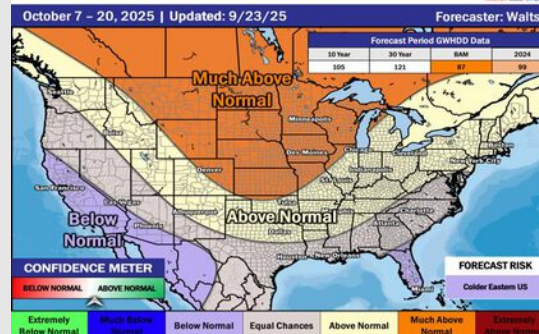


8-14 Day Temperature Departure

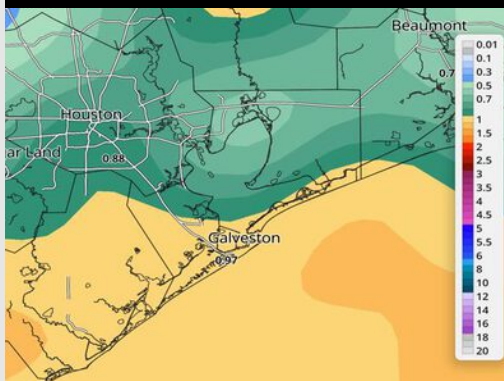


15-30 Day Temperature Departure

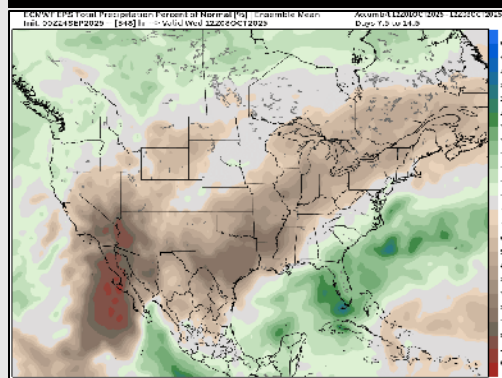
Week 3/4 Temperature Outlook



Next 7 Day Total Precipitation

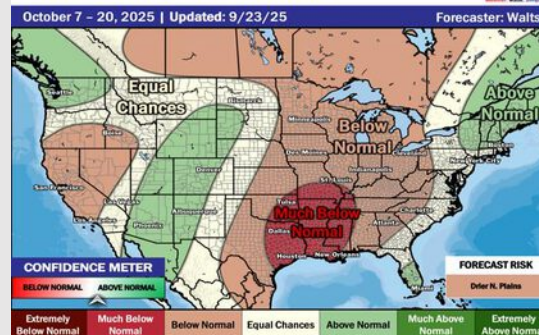


8-14 Day % of Average Precip.



15-30 Day % of Average Precip.

Week 3/4 Precipitation Outlook



- Temps are expected to be near normal for the next 7 days with scattered storm chances throughout the weekend.
- Above normal temperatures and below normal rain chances are favored for days 8 – 14.
- Near normal temperatures are favored for early to mid October with much below normal rainfall chances.