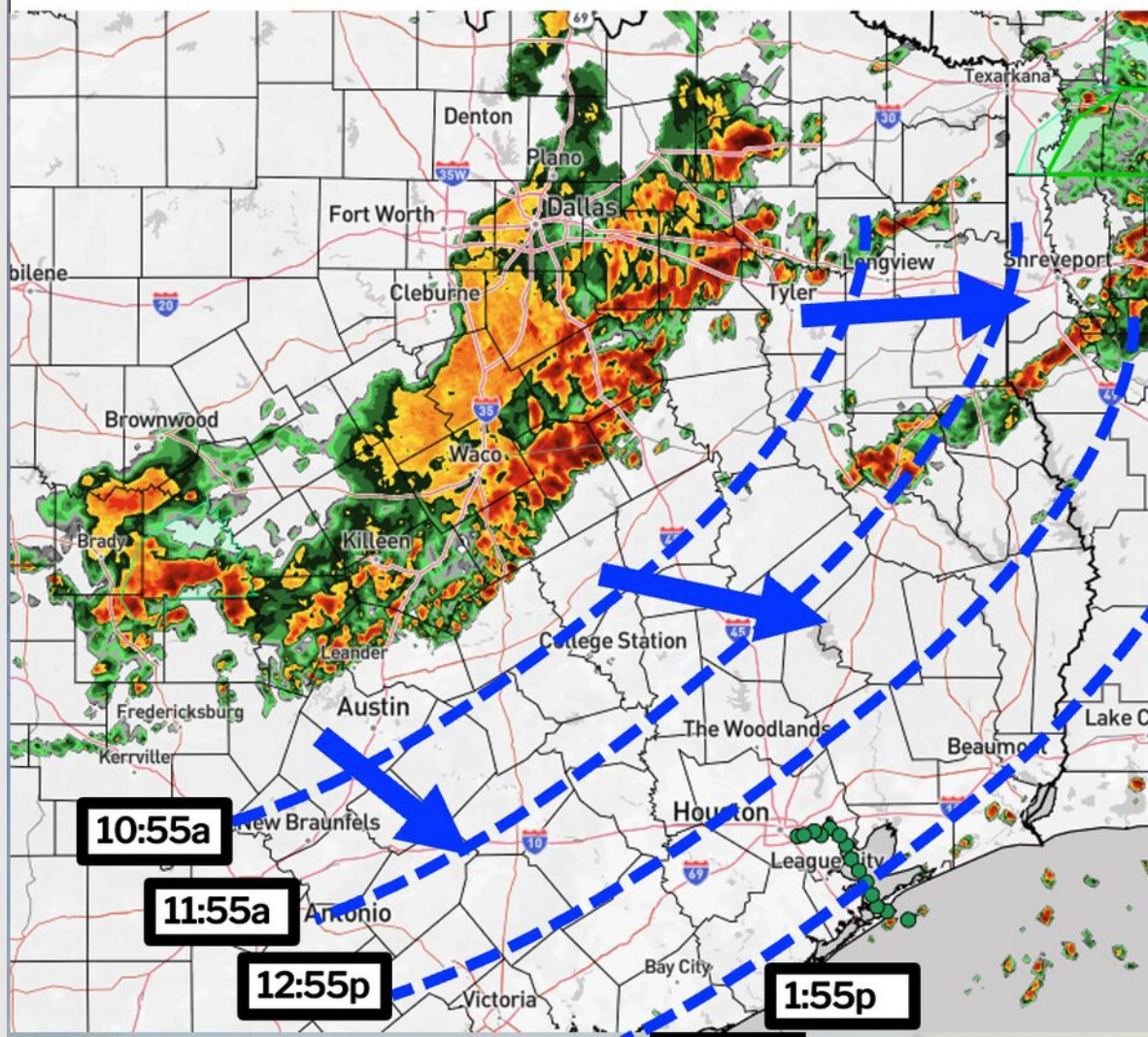


✓ Blue Lines = approximate arrival time of storms



Houston Pilots Forecast Package



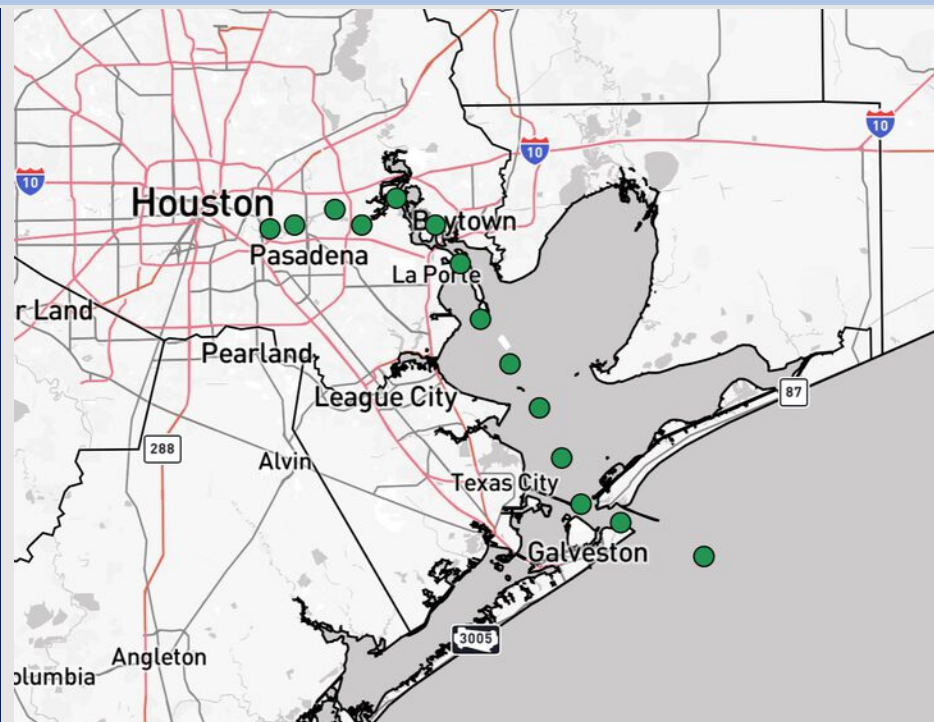
Updated: 10:15 AM CT

Wednesday, September 24, 2025

Forecaster: John Kemper

Weather Headlines

- A few strong to potentially severe storms will be possible today.
- Hit/miss showers and storms in play at times over the next 48 hours.
- No tropical activity is favored in the Gulf over the next 7-10 days.



Current Radar: 10:10 AM CT

As always, please do not hesitate to reach out to us with any forecast questions at **(317)-560-8122**. Press **1** for forecast questions.

You can also access real-time forecast updates and 24/7 meteorological chat assistance on your **Clarity** app. Click [here](#) for login assistance.

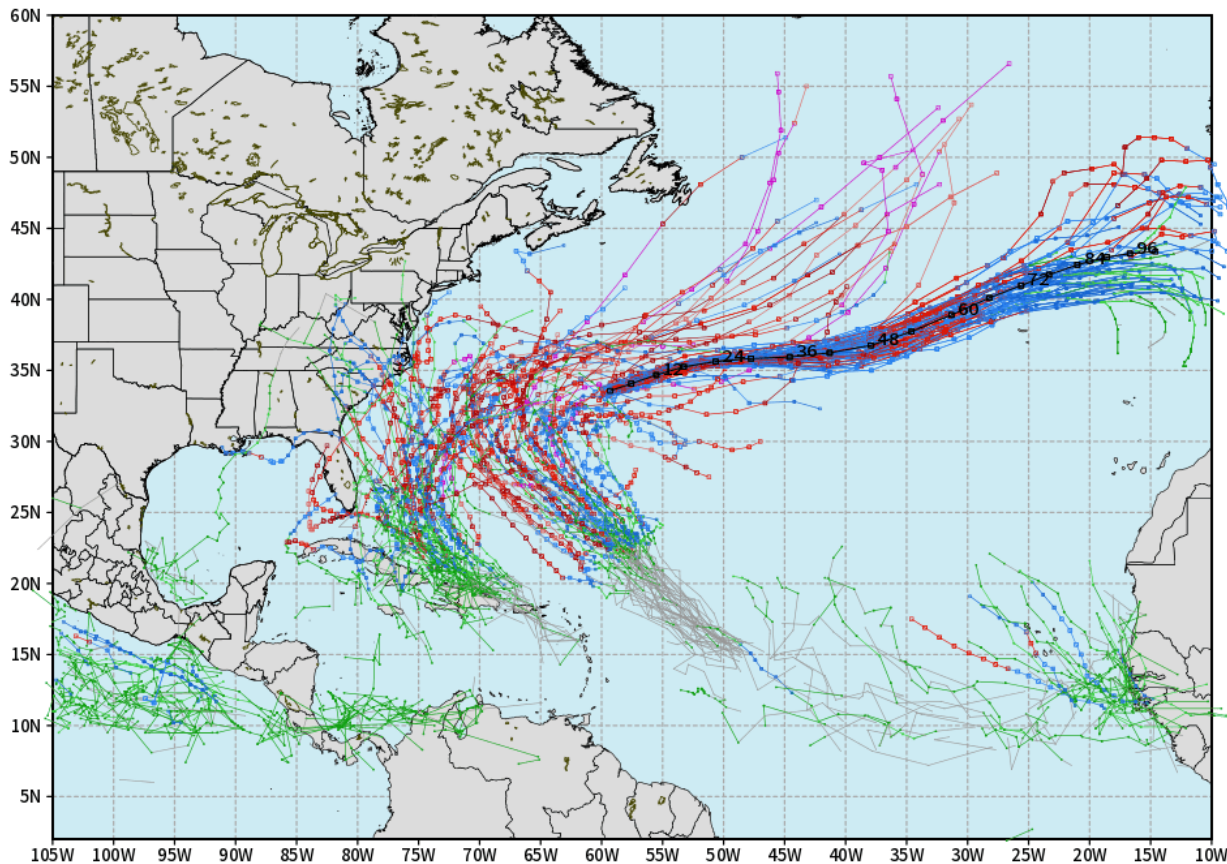


Houston Pilots Tropical Update

10-Day Tropical Outlook

ECMWF ATLANTIC EPS Cyclone Locations --> Next [10-days]
INIT: 12Z23SEP2025 --> UNTIL 12Z03OCT2025

o-o ENSEMBLE MEAN
o-o 1000 - 1010 hPa
o-o 980 - 999 hPa
o-o 960 - 979 hPa
o-o 950 - 959 hPa
o-o < 950 hPa



weathermodels.com

No tropical development favored in the Gulf over the next 7-10 days.

Hurricane Gabrielle is favored to stay out in the Atlantic, away from the US East Coast.

Monitoring two additional waves behind Gabrielle, however these are also currently favored to stay along or off the US East Coast.

Houston Pilots Visibility Chart (miles)



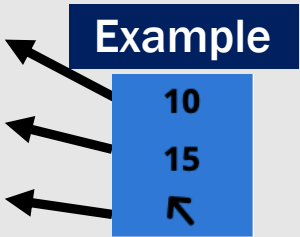
Visibility	Wed 1 am	Wed 2 am	Wed 3 am	Wed 4 am	Wed 5 am	Wed 6 am	Wed 7 am	Wed 8 am	Wed 9 am	Wed 10 am	Wed 11 am	Wed 12 pm	Wed 1 pm	Wed 2 pm	Wed 3 pm	Wed 4 pm	Wed 5 pm	Wed 6 pm	Wed 7 pm	Wed 8 pm	Wed 9 pm	Wed 10 pm	Wed 11 pm	Thu 12 am
Houston Pilots N - 610 Bridge	10	10	10	10	10	10	10	10	6.9	10	10	10	10	10	10	10	10	10	10	10	9	10	10	10
Houston Pilots M - Kinder 1	10	10	10	10	10	10	10	10	6.9	10	10	10	10	10	10	10	10	10	10	10	9	10	10	10
Houston Pilots L - Greens Bayou	10	10	10	10	10	10	10	10	6.9	10	10	10	10	10	10	10	10	10	10	10	9	10	10	10
Houston Pilots K - Shell Crude	10	10	10	10	10	10	10	10	6.9	10	10	10	10	10	10	10	10	10	10	10	9	10	10	10
Houston Pilots J - Lynchburg Ferries	10	10	10	10	10	10	10	10	6.9	10	10	10	10	10	10	10	10	10	10	10	9	10	10	10
Houston Pilots I - Exxon 3	10	10	10	10	10	10	10	10	6.9	10	10	10	10	10	10	10	10	10	10	10	9	10	10	10
Houston Pilots H - Morgans Point	10	10	10	10	10	10	10	10	6.9	10	10	10	10	10	10	10	10	10	10	10	9	10	10	10
Houston Pilots G - 75/76	10	10	10	10	10	10	10	10	6.9	10	10	10	10	10	10	10	10	10	10	10	10	10	10	2.5
Houston Pilots F - 63/64	10	10	10	10	10	10	10	10	6.9	10	10	10	10	10	10	10	10	10	10	10	10	10	10	5
Houston Pilots E - 51/52	10	10	10	10	10	10	10	10	7.9	10	10	10	10	10	10	10	10	10	10	10	10	10	10	8
Houston Pilots D - 37/38	10	10	10	10	10	10	10	10	7.9	10	10	10	10	10	10	10	10	10	10	10	10	10	10	9
Houston Pilots C - 25/26	10	10	10	10	10	10	10	10	7.9	10	10	10	10	10	10	10	10	10	10	10	10	10	10	9
Houston Pilots B - 11/12	10	10	10	10	10	10	10	10	9	10	10	10	10	10	10	10	10	10	10	10	10	10	10	9
Houston Pilots A - 1 & 2 Bravo	10	10	10	10	10	10	10	10	9	10	10	10	10	10	10	10	10	10	10	10	10	10	10	9

NOTE: This is automated data that may/may not agree with the official BAM thinking that's found on the daily slides or special visibility report slides. This data should be used as a guide only

Houston Pilots Wind Chart



Sustained Wind 10 Knots
Gusts 15 Knots
Wind from the SE



Wind	Wed 1 am	Wed 2 am	Wed 3 am	Wed 4 am	Wed 5 am	Wed 6 am	Wed 7 am	Wed 8 am	Wed 9 am	Wed 10 am	Wed 11 am	Wed 12 pm	Wed 1 pm	Wed 2 pm	Wed 3 pm	Wed 4 pm	Wed 5 pm	Wed 6 pm	Wed 7 pm	Wed 8 pm	Wed 9 pm	Wed 10 pm	Wed 11 pm	Thu 12 am
Houston Pilots N - 610 Bridge	7 14 ↑	6 14 ↑	5 13 ↑	6 12 ↑	6 12 ↑	6 10 ↑	5 9 ↑	3 8 ↑	5 9 ↑	6 10 ↑	6 13 ↑	6 13 ↑	6 13 ↑	6 14 ↑	6 13 ↑	6 13 ↑	6 13 ↑	6 12 ↓	6 12 ↓	5 10 ↓	5 9 ↓	3 8 ↓	3 8 ↓	3 7 ↑
Houston Pilots M - Kinder 1	7 14 ↑	6 14 ↑	6 13 ↑	6 12 ↑	6 12 ↑	6 10 ↑	5 9 ↑	3 8 ↑	5 9 ↑	6 10 ↑	6 13 ↑	6 13 ↑	6 13 ↑	6 13 ↑	6 13 ↑	6 13 ↑	6 13 ↑	6 12 ↓	6 12 ↓	5 10 ↓	5 9 ↓	3 8 ↓	3 8 ↓	3 7 ↑
Houston Pilots L - Greens Bayou	7 14 ↑	6 13 ↑	6 13 ↑	6 12 ↑	6 12 ↑	5 10 ↑	5 9 ↑	3 8 ↑	5 9 ↑	5 10 ↑	6 12 ↑	6 13 ↑	6 13 ↑	6 13 ↑	6 13 ↑	6 13 ↑	6 13 ↑	6 12 ↓	6 10 ↓	5 10 ↓	3 9 ↓	3 8 ↓	3 8 ↓	3 7 ↑
Houston Pilots K - Shell Crude	6 14 ↑	6 14 ↑	6 13 ↑	6 13 ↑	6 12 ↑	5 10 ↑	5 9 ↑	3 8 ↑	5 9 ↑	5 10 ↑	6 12 ↑	6 13 ↑	6 13 ↑	6 13 ↑	6 13 ↑	6 13 ↑	6 13 ↑	6 12 ↓	6 10 ↓	5 10 ↓	3 9 ↓	3 8 ↓	3 8 ↓	3 7 ↑
Houston Pilots J - Lynchburg Ferries	6 14 ↑	6 14 ↑	6 13 ↑	6 12 ↑	5 12 ↑	5 10 ↑	3 9 ↑	3 8 ↑	3 9 ↑	5 10 ↑	6 12 ↑	6 13 ↑	6 13 ↑	6 13 ↑	6 13 ↑	6 13 ↑	6 13 ↑	6 12 ↓	5 10 ↓	5 10 ↓	3 9 ↓	3 8 ↓	3 8 ↓	3 7 ↑
Houston Pilots I - Exxon 3	13 17 ↑	13 17 ↑	12 17 ↑	12 16 ↑	10 15 ↑	10 14 ↑	8 13 ↑	8 12 ↑	8 12 ↑	8 12 ↑	8 13 ↑	8 14 ↑	8 14 ↑	8 15 ↑	8 15 ↑	8 14 ↑	8 15 ↑	8 13 ↑	8 13 ↑	8 13 ↑	8 12 ↑	7 10 ↑	7 10 ↑	7 10 ↑
Houston Pilots H - Morgans Point	13 17 ↑	12 17 ↑	12 17 ↑	10 16 ↑	10 16 ↑	10 15 ↑	8 14 ↑	8 12 ↑	8 12 ↑	8 12 ↑	8 13 ↑	8 14 ↑	8 14 ↑	8 14 ↑	8 14 ↑	8 14 ↑	8 15 ↑	8 13 ↑	8 13 ↑	8 13 ↑	8 12 ↑	8 10 ↑	8 10 ↑	7 10 ↑
Houston Pilots G - 75/76	13 18 ↑	13 18 ↑	13 18 ↑	13 17 ↑	13 17 ↑	12 16 ↑	10 15 ↑	9 14 ↑	8 14 ↑	8 14 ↑	8 13 ↑	8 14 ↑	7 14 ↑	8 14 ↑	8 14 ↑	8 14 ↑	8 15 ↑	8 14 ↑	8 14 ↑	8 13 ↑	8 13 ↑	8 13 ↑	8 13 ↑	8 13 ↑
Houston Pilots F - 63/64	13 18 ↑	13 18 ↑	13 18 ↑	13 17 ↑	13 17 ↑	12 16 ↑	10 15 ↑	9 15 ↑	9 14 ↑	8 14 ↑	8 13 ↑	8 14 ↑	7 13 ↑	7 14 ↑	8 14 ↑	8 14 ↑	8 15 ↑	8 14 ↑	8 14 ↑	8 13 ↑	8 13 ↑	8 13 ↑	8 13 ↑	8 13 ↑
Houston Pilots E - 51/52	14 20 ↑	13 18 ↑	13 18 ↑	13 18 ↑	13 17 ↑	13 17 ↑	10 16 ↑	10 15 ↑	9 15 ↑	9 14 ↑	8 13 ↑	8 14 ↑	8 14 ↑	8 14 ↑	8 15 ↑	8 15 ↑	8 15 ↑	9 15 ↑	9 15 ↑	9 13 ↑	9 13 ↑	9 13 ↑	9 13 ↑	8 13 ↑
Houston Pilots D - 37/38	14 20 ↑	14 20 ↑	14 20 ↑	13 18 ↑	13 18 ↑	13 17 ↑	12 16 ↑	10 15 ↑	10 15 ↑	9 15 ↑	9 14 ↑	8 15 ↑	8 15 ↑	8 15 ↑	8 15 ↑	8 15 ↑	9 15 ↑	9 15 ↑	9 15 ↑	9 14 ↑	9 14 ↑	9 14 ↑	9 13 ↑	9 13 ↑
Houston Pilots C - 25/26	13 18 ↑	13 18 ↑	13 18 ↑	13 18 ↑	13 18 ↑	13 17 ↑	12 16 ↑	10 15 ↑	10 15 ↑	10 15 ↑	9 14 ↑	9 15 ↑	8 15 ↑	8 15 ↑	8 15 ↑	9 15 ↑	9 15 ↑	9 15 ↑	9 15 ↑	9 14 ↑	9 14 ↑	8 14 ↑	8 13 ↑	8 13 ↑
Houston Pilots B - 11/12	10 18 ↑	10 18 ↑	10 18 ↑	10 17 ↑	10 17 ↑	10 16 ↑	10 15 ↑	9 16 ↑	9 16 ↑	9 15 ↑	8 14 ↑	8 15 ↑	8 15 ↑	8 15 ↑	8 15 ↑	9 15 ↑	9 15 ↑	8 15 ↑	8 15 ↑	8 14 ↑	8 14 ↑	8 13 ↑	8 13 ↑	7 13 ↑
Houston Pilots A - 1 & 2 Bravo	15 21 ↑	15 21 ↑	15 21 ↑	15 21 ↑	14 20 ↑	14 20 ↑	13 20 ↑	13 17 ↑	12 17 ↑	10 16 ↑	10 15 ↑	9 15 ↑	9 16 ↑	9 16 ↑	9 16 ↑	9 15 ↑	9 15 ↑	9 16 ↑	10 15 ↑	10 15 ↑	10 15 ↑	9 15 ↑	9 15 ↑	9 14 ↑

NOTE: This is automated data that may/may not agree with the official BAM thinking that's found on the daily slides.
This data should be used as a guide only.

Houston Pilots: WED. 9/24/2025

Forecast Discussion

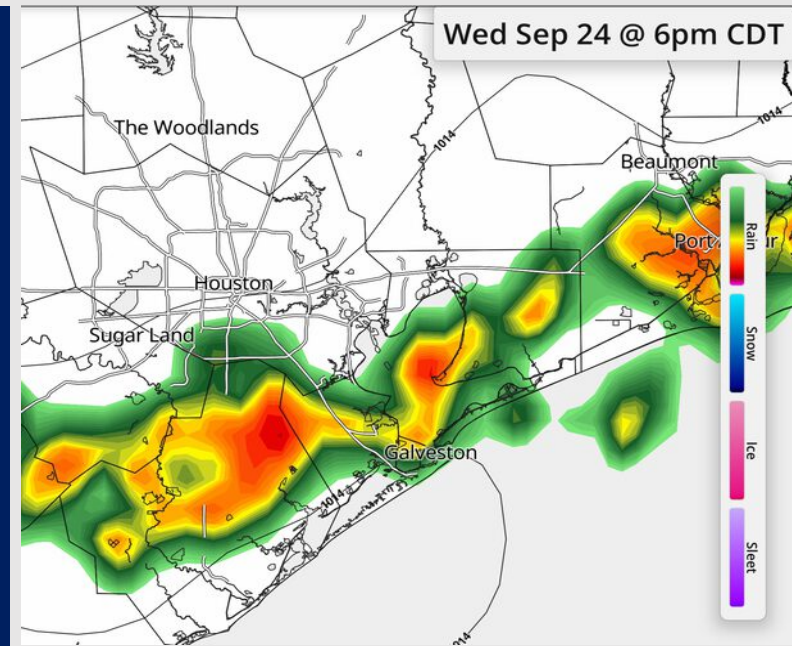
Precip: Scattered showers and storms will begin to develop after 1PM for all Stations. From 4PM to 9PM, a line of showers and storms (some potentially severe) are expected to roll through all Stations. **Lightning and wind gusts of 35 – 45 kts will be possible with storms, especially within the line.**

Wind: Winds will be out of the S/SW through 3 PM before becoming variable for the rest of the day. **N of Morgan's Point:** Winds will be at 3 – 8 kts. **S of Morgan's Point:** Winds will be at 8 – 13 kts through 11 AM before decreasing to 4 – 9 kts. **Non-thunderstorm wind gusts of 20 kts will be in play for Stations S of Morgan's Point through 6 AM.**

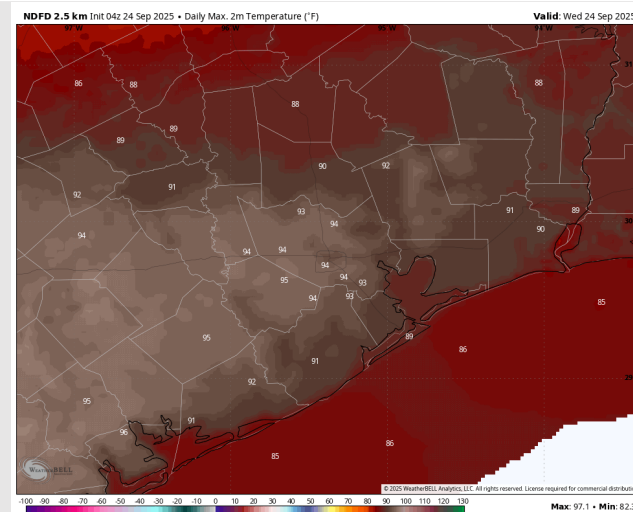
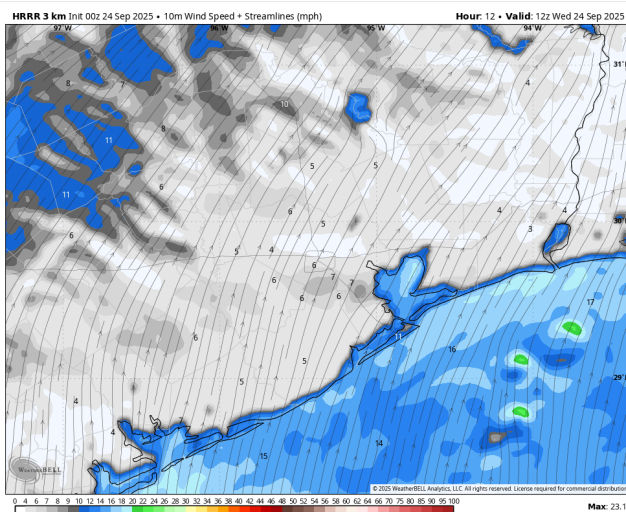
High Temps: **N of Morgan's Point:** Low 90s F. **S of Morgan's Point:** Upper 80s F.

Visibility: No fog concerns today, however, visibilities may be reduced under a heavier downpour.

Precip Image: 6 PM CT



Wind Speed:
7 AM CT



High Temps
Today

Houston Pilots: THU. 9/25/2025

Forecast Discussion

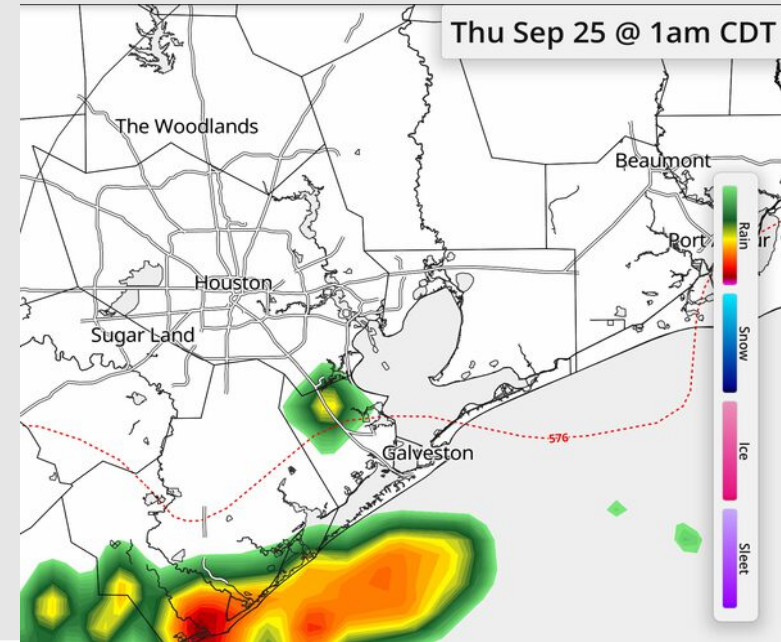
Precip: Scattered showers and a few thunderstorms will last through 6AM for Stations S of Morgan's Point. **Lightning and brief wind gusts of 20 kts will be possible with storms.**

Wind: Winds will be variable through 6 AM before settling out of the N/NW. **N of Morgan's Point:** Winds will be at 3 – 8 kts. **S of Morgan's Point:** Winds will be at 6 – 11 kts.

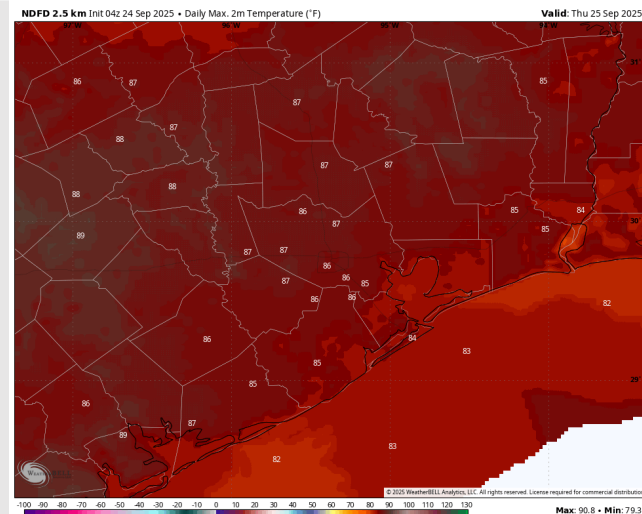
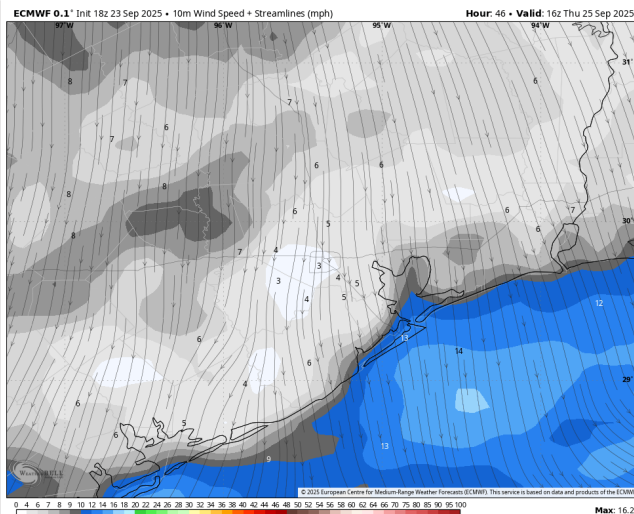
High Temps: **N of Morgan's Point:** Mid 80s F. **S of Morgan's Point:** Mid 80s F.

Visibility: No fog concerns Thursday however visibilities can be reduced under heavier downpours prior to 6 AM.

Precip Image: 1 AM CT



Wind Speed:
11 AM CT



High Temps
Thursday

Houston Pilots: FRI. 9/26/2025

Forecast Discussion

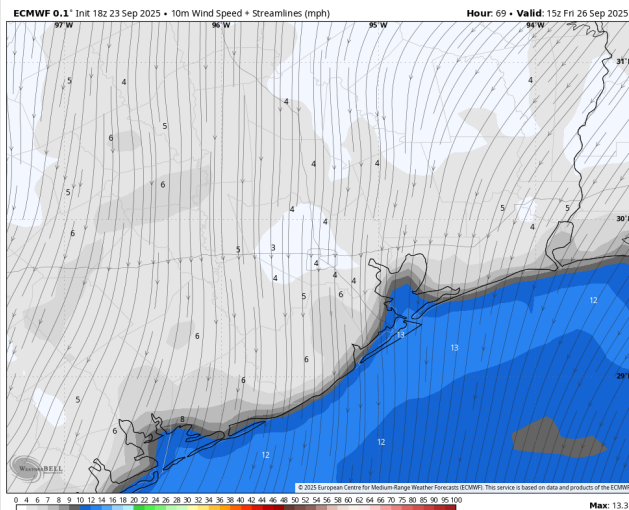
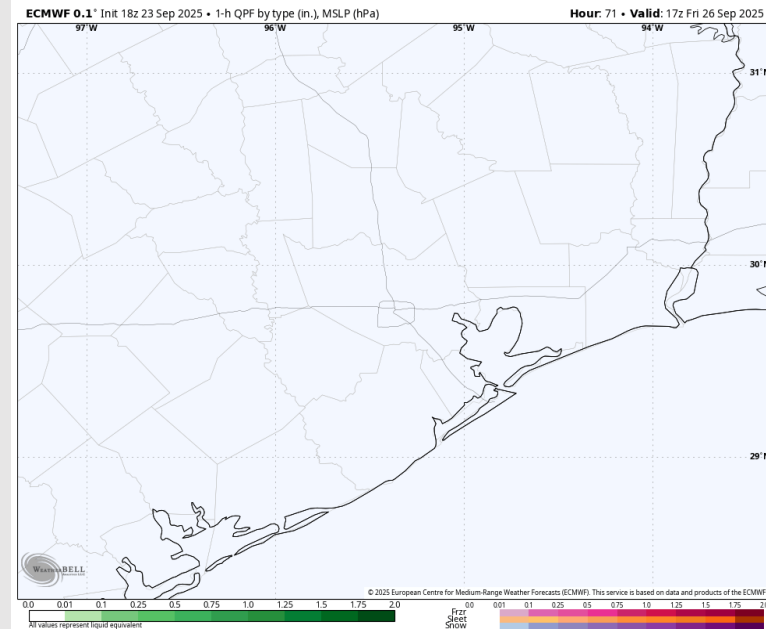
Precip: Dry conditions favored for Friday.

Wind: Winds will be out of the N/NW through 4 PM before becoming variable. **N of Morgan's Point:** Winds will be at 2 – 7 kts. **S of Morgan's Point:** Winds will be at 6 – 11 kts through 1 PM before decreasing to 3 – 8 kts. **Wind gusts of 20 kts in play for Stations S of Morgan's Point through 10 AM.**

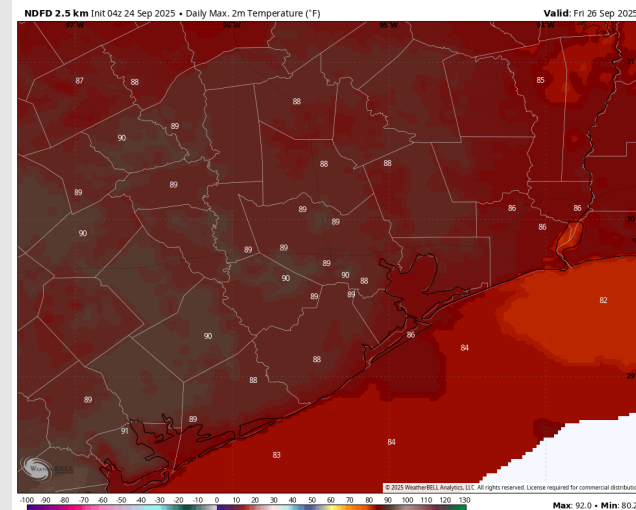
High Temps: **N of Morgan's Point:** Upper 80s / Near 90 F. **S of Morgan's Point:** Mid 80s F.

Visibility: No visibility concerns Friday.

Precip Image: 12 PM CT



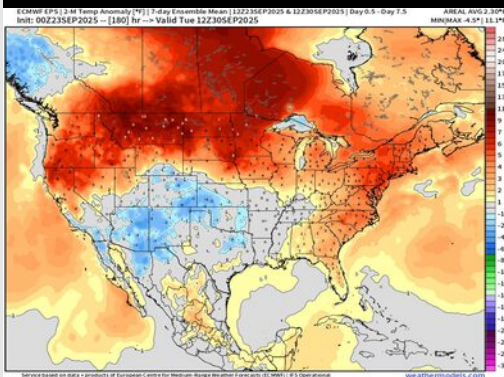
Wind Speed:
10 AM CT



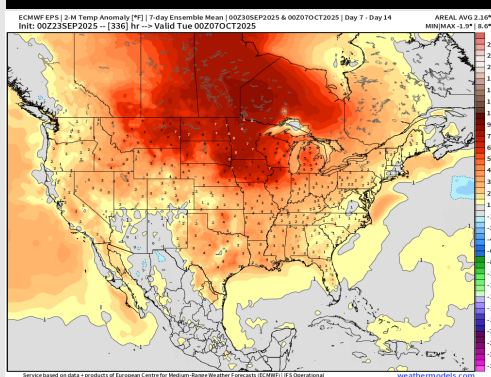
High Temps
Friday

Houston Pilots: 9/24/25

Next 7 Day Temperature Departure



8-14 Day Temperature Departure

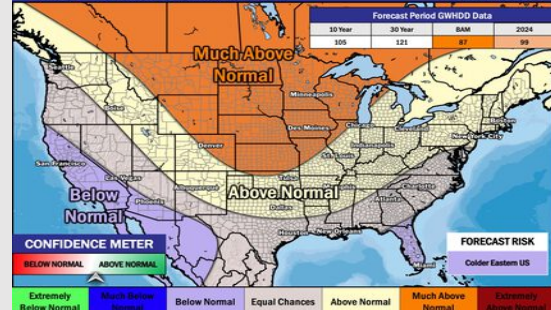


15-30 Day Temperature Departure

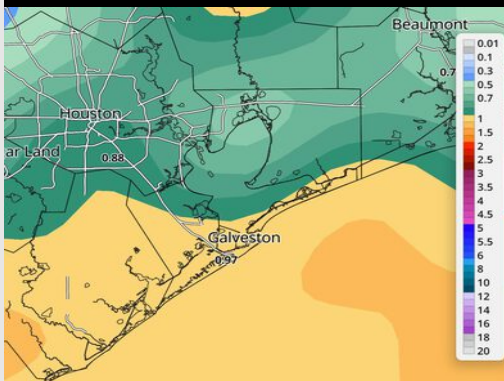
Week 3/4 Temperature Outlook

October 7 - 20, 2025 | Updated: 9/23/25

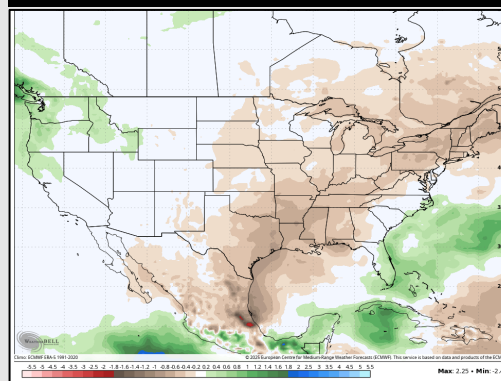
Forecaster: Walts



Next 7 Day Total Precipitation



8-14 Day % of Average Precip.

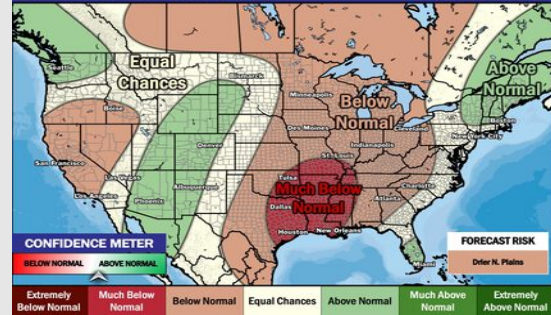


15-30 Day % of Average Precip.

Week 3/4 Precipitation Outlook

October 7 - 20, 2025 | Updated: 9/23/25

Forecaster: Walts



- Temps are expected to be near normal for the next 7 days with scattered storm chances throughout the weekend.
- Above normal temperatures and below normal rain chances are favored for days 8 - 14.
- Near normal temperatures are favored for early to mid October with much below normal rainfall chances.