

Houston Pilots Forecast Package



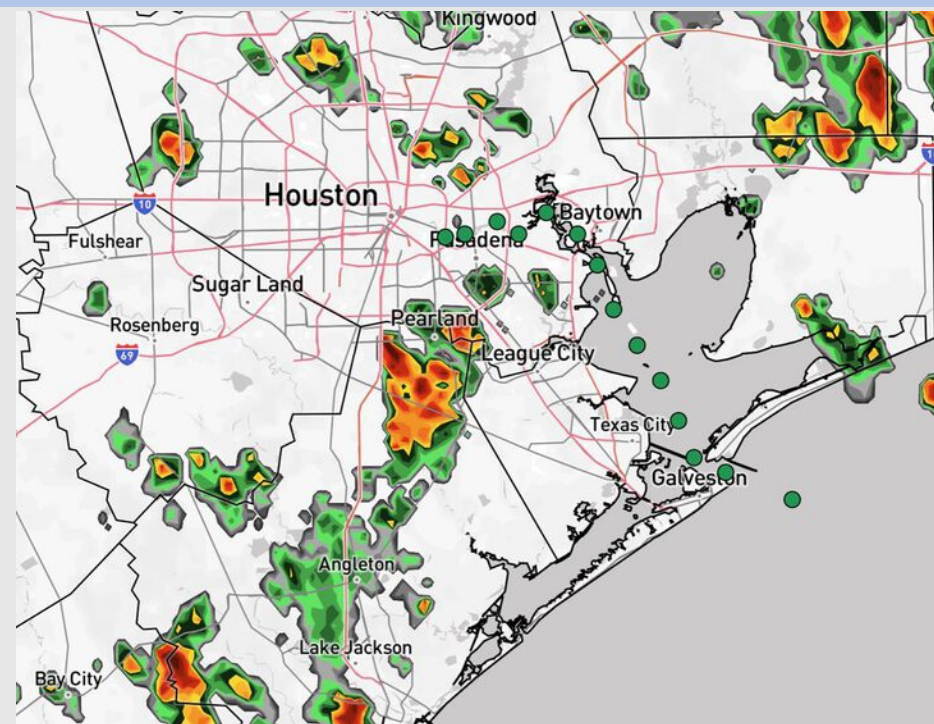
Updated: 1:04 PM CT

Monday, September 22, 2025

Forecaster: Hope Kleitsch

Weather Headlines

- Wind gusts of 20 kts in play today and again in the early AM WED.
- Hit/miss showers and storms in play at times over the next 72 hours.
- No tropical activity is favored the next 7-10 days.



Current Radar: 1:04 PM CT

As always, please do not hesitate to reach out to us with any forecast questions at [\(317\)-560-8122](tel:317-560-8122). Press 1 for forecast questions.

You can also access real-time forecast updates and 24/7 meteorological chat assistance on your [Clarity](#) app. Click [here](#) for login assistance.

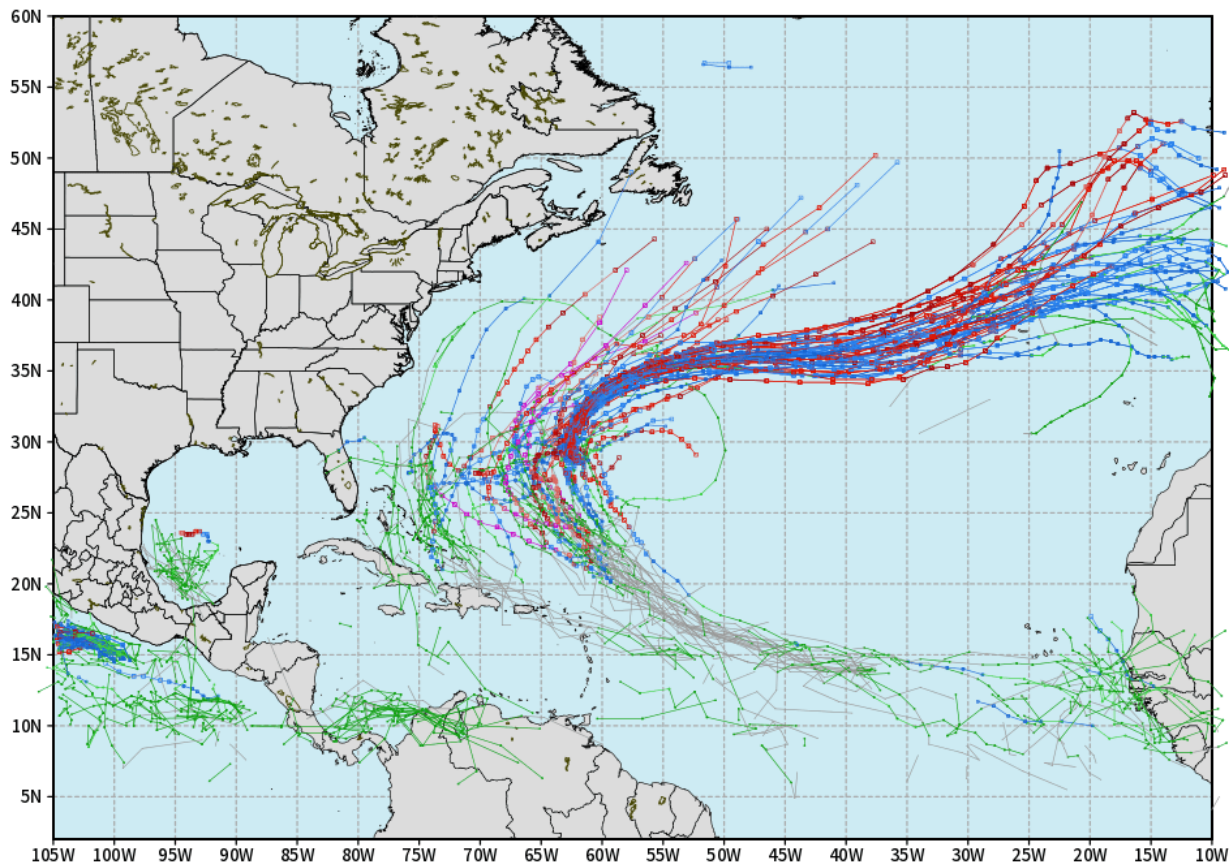


Houston Pilots Tropical Update

10-Day Tropical Outlook

ECMWF ATLANTIC EPS Cyclone Locations --> Next [10-days]
INIT: 00Z22SEP2025 --> UNTIL 00Z02OCT2025

o-o ENSEMBLE MEAN
o-o 1000 - 1010 hPa
o-o 980 - 999 hPa
o-o 960 - 979 hPa
o-o 950 - 959 hPa
o-o < 950 hPa



No tropical development favored in the Gulf over the next 7-10 days.

Hurricane Gabrielle is favored to stay out in the Atlantic, away from the US East Coast.

Additional waves behind Gabrielle are also currently favored to stay off the US East Coast.

Houston Pilots Visibility Chart (miles)



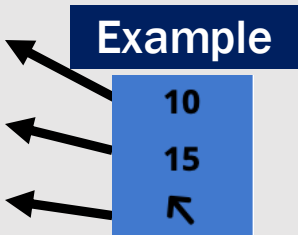
Visibility	Mon 3 pm	Mon 4 pm	Mon 5 pm	Mon 6 pm	Mon 7 pm	Mon 8 pm	Mon 9 pm	Mon 10 pm	Mon 11 pm	Tue 12 am	Tue 1 am	Tue 2 am	Tue 3 am	Tue 4 am	Tue 5 am	Tue 6 am	Tue 7 am	Tue 8 am	Tue 9 am	Tue 10 am	Tue 11 am	Tue 12 pm	Tue 1 pm	Tue 2 pm
Houston Pilots N - 610 Bridge	10	10	10	10	10	10	10	10	10	10	10	10	10	10	10	10	10	9	9	10	10	10	10	10
Houston Pilots M - Kinder 1	10	10	10	10	10	10	10	10	10	10	10	10	10	10	10	10	10	9	9	10	10	10	10	10
Houston Pilots L - Greens Bayou	10	10	10	10	10	10	10	10	10	10	10	10	10	10	10	10	10	9	9	10	10	10	10	10
Houston Pilots K - Shell Crude	10	10	10	10	10	10	10	10	10	10	10	10	10	10	10	10	10	9	9	10	10	10	10	10
Houston Pilots J - Lynchburg Ferries	10	10	10	10	10	10	10	10	10	10	10	10	10	10	10	10	10	9	9	10	10	10	10	10
Houston Pilots I - Exxon 3	10	10	10	10	10	10	10	10	10	10	10	10	10	10	10	10	10	9	7.9	10	10	10	10	10
Houston Pilots H - Morgans Point	10	10	10	10	10	10	10	10	10	10	10	10	10	10	10	10	10	9	7.9	10	10	10	10	10
Houston Pilots G - 75/76	10	10	10	10	10	10	10	10	10	10	10	10	10	10	10	10	10	10	7.9	7.9	10	10	10	10
Houston Pilots F - 63/64	10	10	10	10	10	10	10	10	10	10	10	10	10	10	10	10	10	10	7.9	7.9	10	10	10	10
Houston Pilots E - 51/52	10	10	10	10	10	10	10	10	10	10	10	10	10	10	10	10	10	10	6.9	6.9	9	7.9	10	10
Houston Pilots D - 37/38	10	10	9	9	10	10	10	10	10	10	10	10	10	10	10	10	10	10	6.9	6.9	7.9	7.9	10	10
Houston Pilots C - 25/26	10	10	9	9	10	10	10	10	10	10	10	10	10	10	9	10	10	10	6.9	6.9	7.9	7.9	10	10
Houston Pilots B - 11/12	9	9	7.9	9	9	10	10	10	10	10	10	10	10	10	9	10	10	10	6.9	6.9	7.9	6.9	10	10
Houston Pilots A - 1 & 2 Bravo	9	7.9	7.9	9	9	9	7.9	9	7.9	7.9	9	10	10	10	9	10	10	10	6.9	6.9	6.9	6.9	10	10

NOTE: This is automated data that may/may not agree with the official BAM thinking that's found on the daily slides or special visibility report slides. This data should be used as a guide only

Houston Pilots Wind Chart



Sustained Wind 10 Knots
Gusts 15 Knots
Wind from the SE



Wind	Mon 3 pm	Mon 4 pm	Mon 5 pm	Mon 6 pm	Mon 7 pm	Mon 8 pm	Mon 9 pm	Mon 10 pm	Mon 11 pm	Tue 12 am	Tue 1 am	Tue 2 am	Tue 3 am	Tue 4 am	Tue 5 am	Tue 6 am	Tue 7 am	Tue 8 am	Tue 9 am	Tue 10 am	Tue 11 am	Tue 12 pm	Tue 1 pm	Tue 2 pm
Houston Pilots N - 610 Bridge	9	9	9	9	9	8	8	7	6	6	6	5	5	3	3	3	3	3	5	6	6	8	8	8
	20	18	18	18	18	16	15	14	13	10	10	9	9	9	9	8	8	8	9	10	13	14	16	16
	↗	↗	↗	↗	↗	↗	↗	↗	↗	↗	↗	↗	↗	↗	↗	↗	↗	↗	↗	↗	↗	↗	↗	
Houston Pilots M - Kinder 1	9	9	9	9	9	8	8	7	6	6	6	5	5	3	3	3	3	3	5	6	6	8	8	8
	20	18	18	18	18	16	15	14	12	10	10	9	9	9	9	8	8	8	9	10	13	14	16	16
	↗	↗	↗	↗	↗	↗	↗	↗	↗	↗	↗	↗	↗	↗	↗	↗	↗	↗	↗	↗	↗	↗	↗	
Houston Pilots L - Greens Bayou	10	10	10	10	9	8	8	7	6	6	5	5	5	3	3	3	3	3	5	6	6	8	8	8
	20	20	18	18	18	16	15	14	12	10	10	9	9	9	9	8	8	8	9	10	12	14	16	16
	↗	↗	↗	↗	↗	↗	↗	↗	↗	↗	↗	↗	↗	↗	↗	↗	↗	↗	↗	↗	↗	↗	↗	
Houston Pilots K - Shell Crude	10	10	10	10	9	8	8	7	6	6	5	5	5	3	3	3	3	3	5	6	6	8	8	8
	20	20	18	18	18	16	15	14	13	12	10	9	9	9	9	8	8	8	9	10	12	14	16	16
	↗	↗	↗	↗	↗	↗	↗	↗	↗	↗	↗	↗	↗	↗	↗	↗	↗	↗	↗	↗	↗	↗	↗	
Houston Pilots J - Lynchburg Ferries	10	10	10	10	9	8	7	6	6	6	5	5	3	3	3	3	3	3	5	6	6	8	8	8
	20	20	20	18	18	16	15	14	12	10	10	9	9	9	9	8	8	8	9	10	12	14	16	16
	↗	↗	↗	↗	↗	↗	↗	↗	↗	↗	↗	↗	↗	↗	↗	↗	↗	↗	↗	↗	↗	↗	↗	
Houston Pilots I - Exxon 3	13	13	13	13	13	13	12	12	10	10	10	10	9	9	9	8	8	8	8	8	9	10	10	10
	21	21	21	20	20	17	16	16	16	15	15	14	14	14	13	13	12	12	12	13	14	15	16	17
	↗	↗	↗	↗	↗	↗	↗	↗	↗	↗	↗	↗	↗	↗	↗	↗	↗	↗	↗	↗	↗	↗	↗	
Houston Pilots H - Morgans Point	13	13	13	13	13	13	12	12	10	10	10	10	9	9	9	8	8	8	8	8	9	10	10	10
	20	21	21	20	20	17	16	16	16	15	15	14	14	14	14	13	12	12	12	13	14	15	16	17
	↗	↗	↗	↗	↗	↗	↗	↗	↗	↗	↗	↗	↗	↗	↗	↗	↗	↗	↗	↗	↗	↗	↗	
Houston Pilots G - 75/76	13	13	13	13	13	13	13	13	12	12	12	10	10	10	10	10	9	9	9	9	9	10	10	10
	20	21	21	20	20	18	17	17	17	17	17	16	16	15	15	15	14	14	14	14	15	16	17	17
	↗	↗	↗	↗	↗	↗	↗	↗	↗	↗	↗	↗	↗	↗	↗	↗	↗	↗	↗	↗	↗	↗	↗	
Houston Pilots F - 63/64	13	13	13	13	13	13	12	12	12	12	12	10	10	10	10	10	10	9	9	9	9	10	10	10
	20	20	21	20	20	17	17	17	17	16	16	16	16	15	15	15	15	14	14	15	15	16	16	17
	↗	↗	↗	↗	↗	↗	↗	↗	↗	↗	↗	↗	↗	↗	↗	↗	↗	↗	↗	↗	↗	↗	↗	
Houston Pilots E - 51/52	13	13	13	13	13	13	13	13	13	12	12	12	12	10	10	10	10	10	10	10	10	10	10	10
	20	20	20	20	18	17	17	17	17	17	17	16	16	15	15	15	15	15	15	15	15	16	17	17
	↗	↗	↗	↗	↗	↗	↗	↗	↗	↗	↗	↗	↗	↗	↗	↗	↗	↗	↗	↗	↗	↗	↗	
Houston Pilots D - 37/38	13	13	13	13	13	13	13	13	13	12	12	12	12	12	10	10	10	10	10	10	10	10	10	10
	20	20	18	18	18	17	17	17	17	17	17	17	17	16	15	15	15	15	15	15	16	16	17	17
	↗	↗	↗	↗	↗	↗	↗	↗	↗	↗	↗	↗	↗	↗	↗	↗	↗	↗	↗	↗	↗	↗	↗	
Houston Pilots C - 25/26	13	13	12	12	12	12	12	12	12	12	10	10	10	10	10	10	10	10	10	10	10	10	10	10
	20	20	18	18	17	17	16	16	16	16	16	16	16	15	15	15	15	15	15	16	16	16	16	16
	↗	↗	↗	↗	↗	↗	↗	↗	↗	↗	↗	↗	↗	↗	↗	↗	↗	↗	↗	↗	↗	↗	↗	
Houston Pilots B - 11/12	12	12	10	10	10	10	10	10	9	9	9	9	9	9	9	9	8	8	9	9	9	10	10	10
	18	18	17	17	17	16	16	16	16	16	16	16	16	15	15	15	15	15	15	15	16	16	16	16
	↗	↗	↗	↗	↗	↗	↗	↗	↗	↗	↗	↗	↗	↗	↗	↗	↗	↗	↗	↗	↗	↗	↗	
Houston Pilots A - 1 & 2 Bravo	12	12	10	12	12	12	12	13	13	13	13	13	13	13	12	12	12	10	10	10	10	10	10	10
	18	18	17	17	18	17	17	18	17	17	17	18	17	17	17	16	16	16	16	17	16	16	17	16
	↗	↗	↗	↗	↗	↗	↗	↗	↗	↗	↗	↗	↗	↗	↗	↗	↗	↗	↗	↗	↗	↗	↗	

NOTE: This is automated data that may/may not agree with the official BAM thinking that's found on the daily slides.
This data should be used as a guide only.

Houston Pilots: MON. 9/22/2025

Forecast Discussion

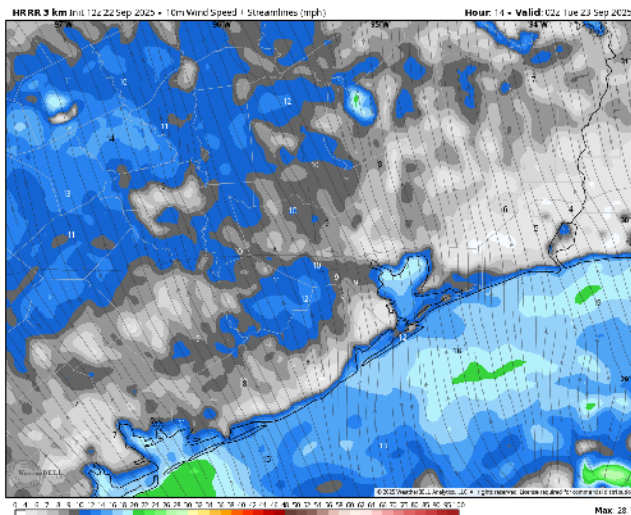
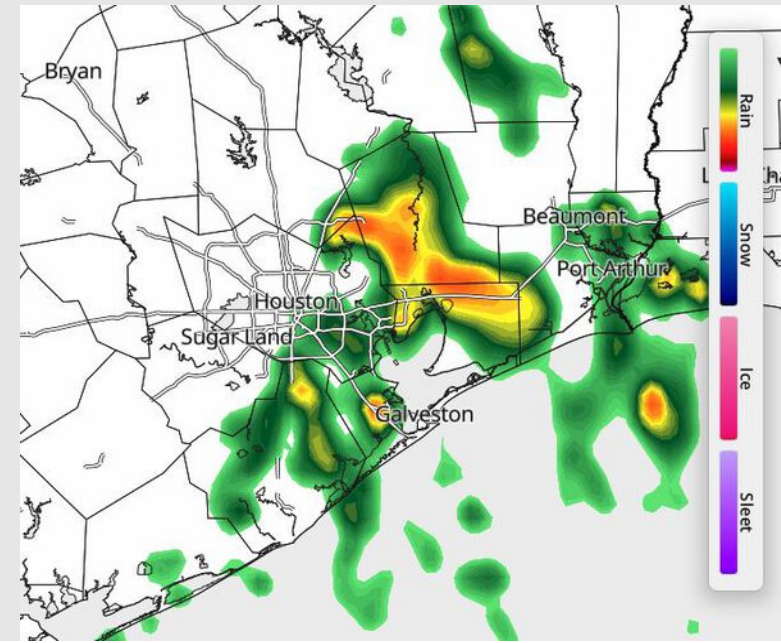
Precip: Scattered showers and a few thunderstorms will be possible for all Stations through 8 PM. Lightning and brief heavy downpours will be possible within storms.

Wind: Winds will be out of the SE the remainder of the day. **N of Morgan's Point:** Winds will be at 3 – 8 kts. **S of Morgan's Point:** Winds will be at 7 – 12 kts. Slightly higher winds of 10– 15 kts will be possible at the Boarding Station. **Wind gusts of 20 kts in play for all Stations through 10PM.**

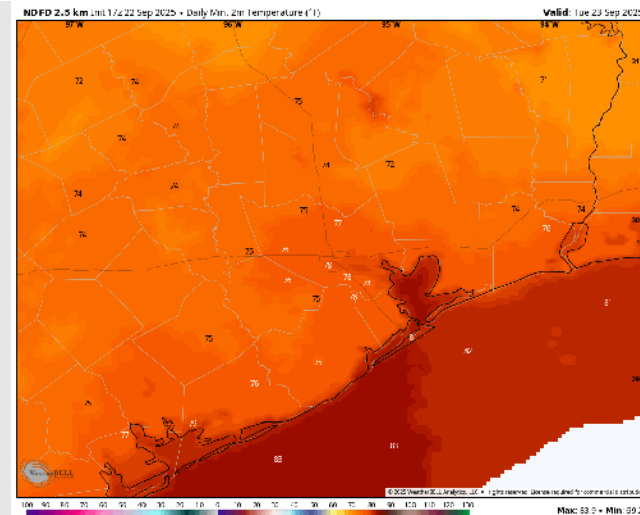
Low Temps: **N of Morgan's Point:** Upper 70s F. **S of Morgan's Point:** Low 80s F.

Visibility: No visibility concerns today.

Precip Image: 5 PM CT



Wind Speed:
9 PM CT



Low Temps
TUE AM

Houston Pilots: TUE. 9/23/2025

Forecast Discussion

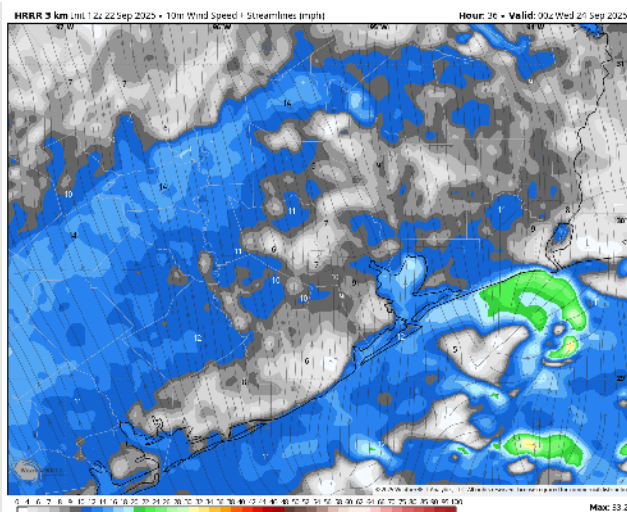
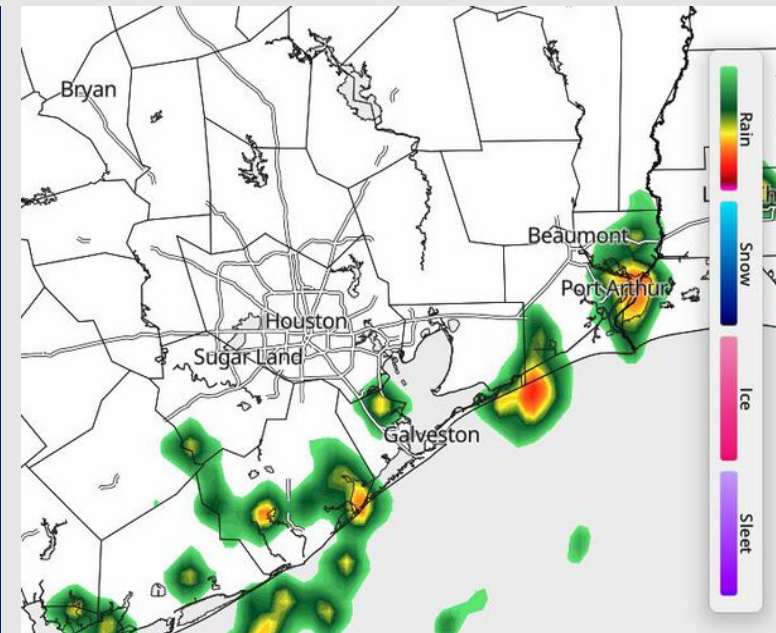
Precip: Hit/miss showers and storms possible for all Stations between 7 AM and 6 PM. Best coverage will be S. of Morgan's Point. Lightning and wind gusts of 20 kts will be possible in storms.

Wind: Winds will be out of the S/SE Tuesday. **N of Morgan's Point:** Winds will be at 3 – 8 kts. **S of Morgan's Point:** Winds will be at 7 – 12 kts, with slightly higher winds of 10 – 15 kts at the Boarding Station.

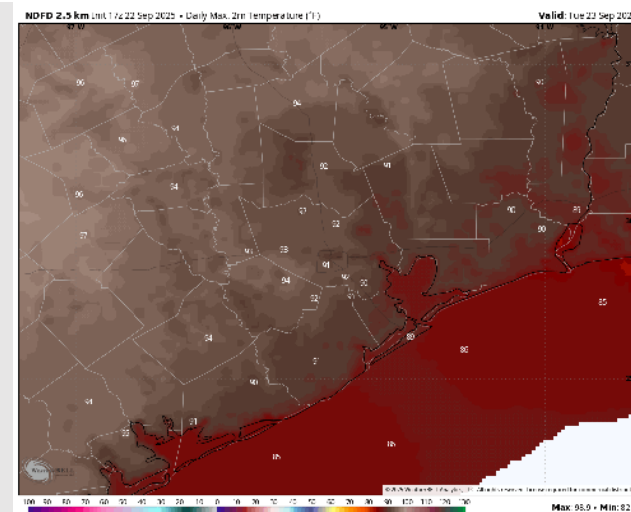
High Temps: **N of Morgan's Point:** Low 90s F. **S of Morgan's Point:** Upper 80s F.

Visibility: No visibility concerns Tuesday.

Precip Image: 12 PM CT



Wind Speed:
7 PM CT



High Temps
Tuesday

Houston Pilots: WED. 9/24/2025

Forecast Discussion

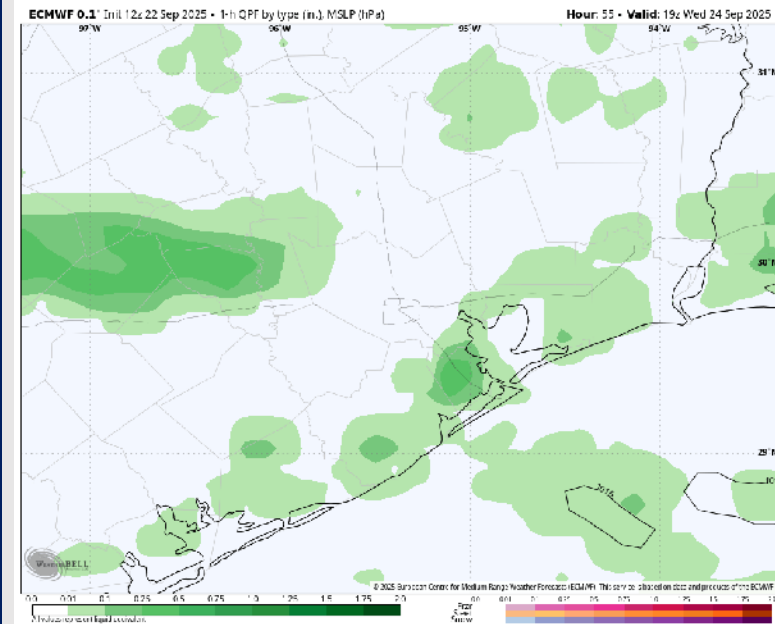
Precip: Hit/miss showers and storms in play for Stations S of Morgan's Point from 4 AM to 2 PM. Scattered coverage will then be in play for all Stations after 2 PM. **Lightning and brief wind gusts of 20 kts will be possible with storms.**

Wind: Winds will be out of the S/SW through 1 PM before becoming variable for the rest of the day. **N of Morgan's Point:** Winds will be at 3 – 8 kts. **S of Morgan's Point:** Winds will be at 8 – 13 kts through 7 AM before decreasing to 4 – 9 kts. **Non-thunderstorm wind gusts of 20 kts will be in play for Stations S of Morgan's Point through 6 AM.**

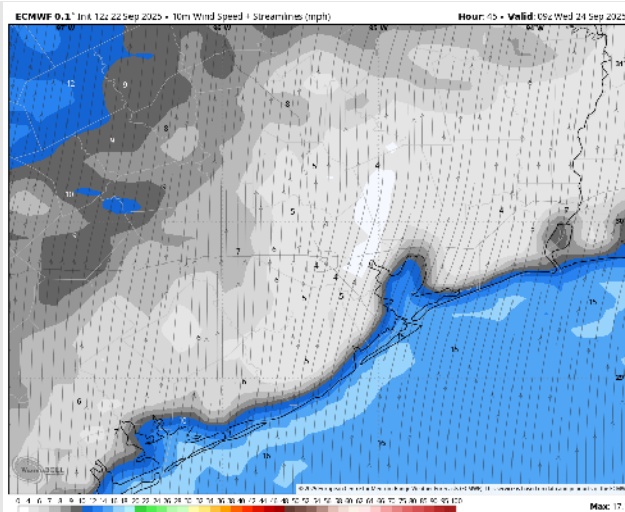
High Temps: **N of Morgan's Point:** Low 90s F. **S of Morgan's Point:** Upper 80s F.

Visibility: No fog concerns Wednesday, however, visibilities may be reduced under a heavier downpour.

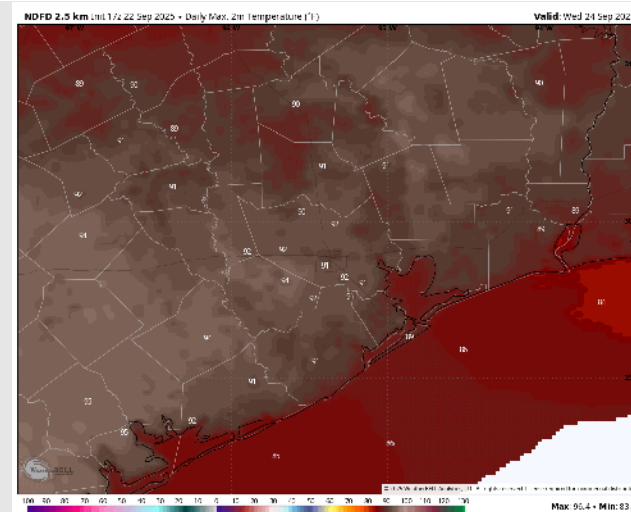
Precip Image: 2 PM CT



**Wind Speed:
4 AM CT**

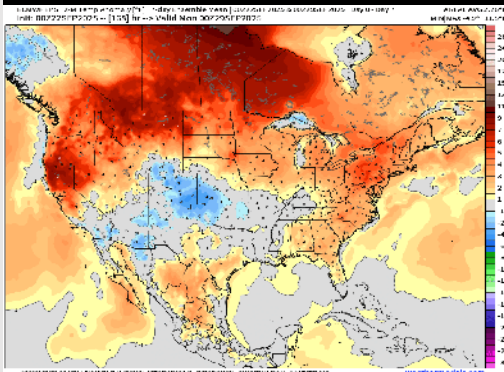


**High Temps
Wednesday**

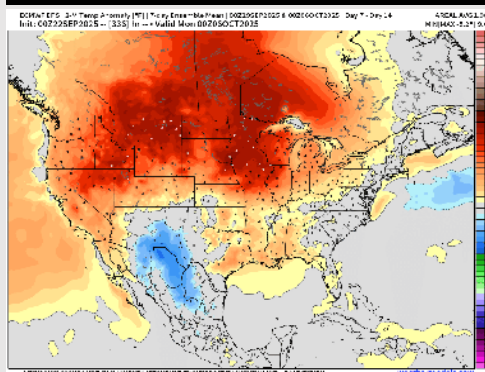


Houston Pilots: 9/22/25

Next 7 Day Temperature Departure

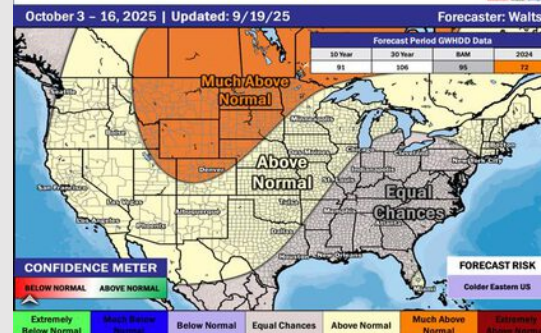


8-14 Day Temperature Departure



15-30 Day Temperature Departure

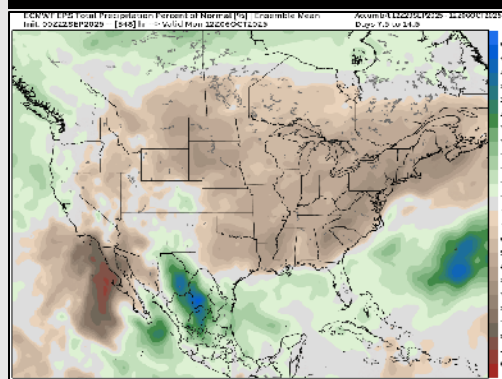
Week 3/4 Temperature Outlook



Next 7 Day Total Precipitation

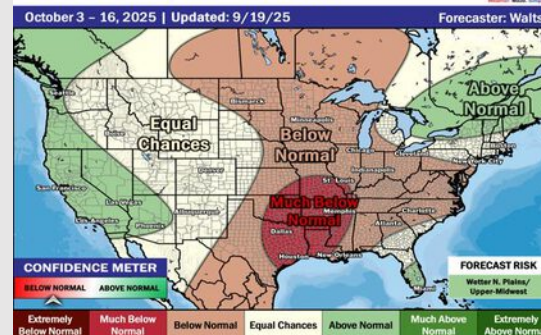


8-14 Day % of Average Precip.



15-30 Day % of Average Precip.

Week 3/4 Precipitation Outlook



- Temps are expected to be above normal for the next 7 days with scattered storm chances throughout the weekend.
- Above normal temperatures and above below normal rain chances are favored for days 8 – 14.
- Near normal temperatures are favored for early to mid October with much below normal rainfall chances.