

# Houston Pilots Forecast Package



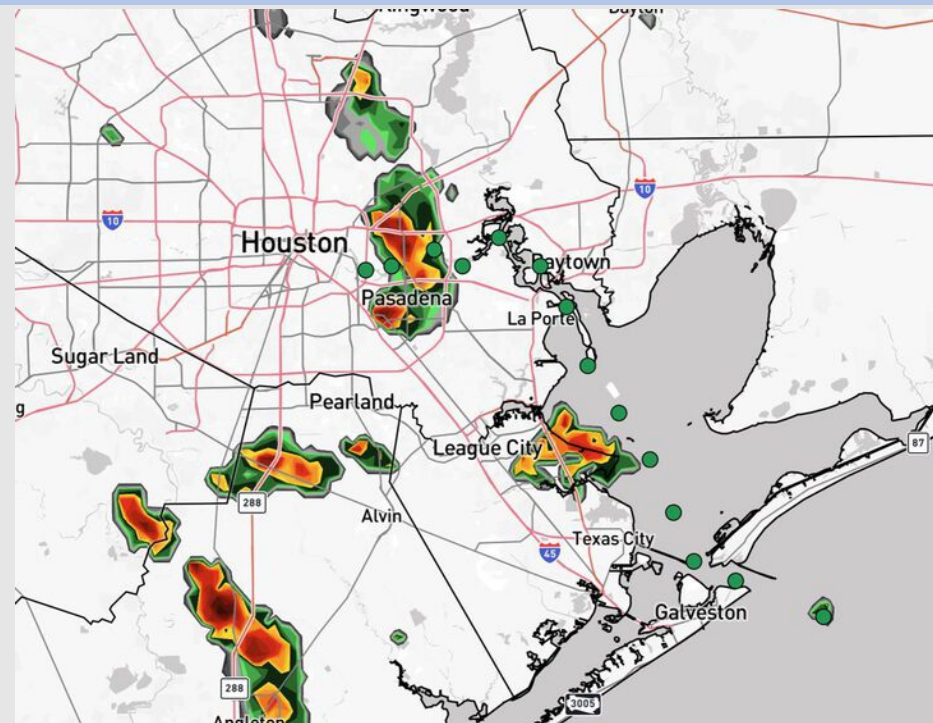
Updated: 1:20 PM CT

Sunday, September 21, 2025

Forecaster: Hope Kleitsch

## Weather Headlines

- Lightning and brief wind gusts of 20 kts will be possible through 6PM.
- Hit/miss showers and storms in play at times over the next 72 hours.
- No tropical activity is favored the next 7-10 days.



Current Radar: 1:16 PM CT

As always, please do not hesitate to reach out to us with any forecast questions at [\(317\)-560-8122](tel:317-560-8122). Press 1 for forecast questions.

You can also access real-time forecast updates and 24/7 meteorological chat assistance on your [Clarity](#) app. Click [here](#) for login assistance.



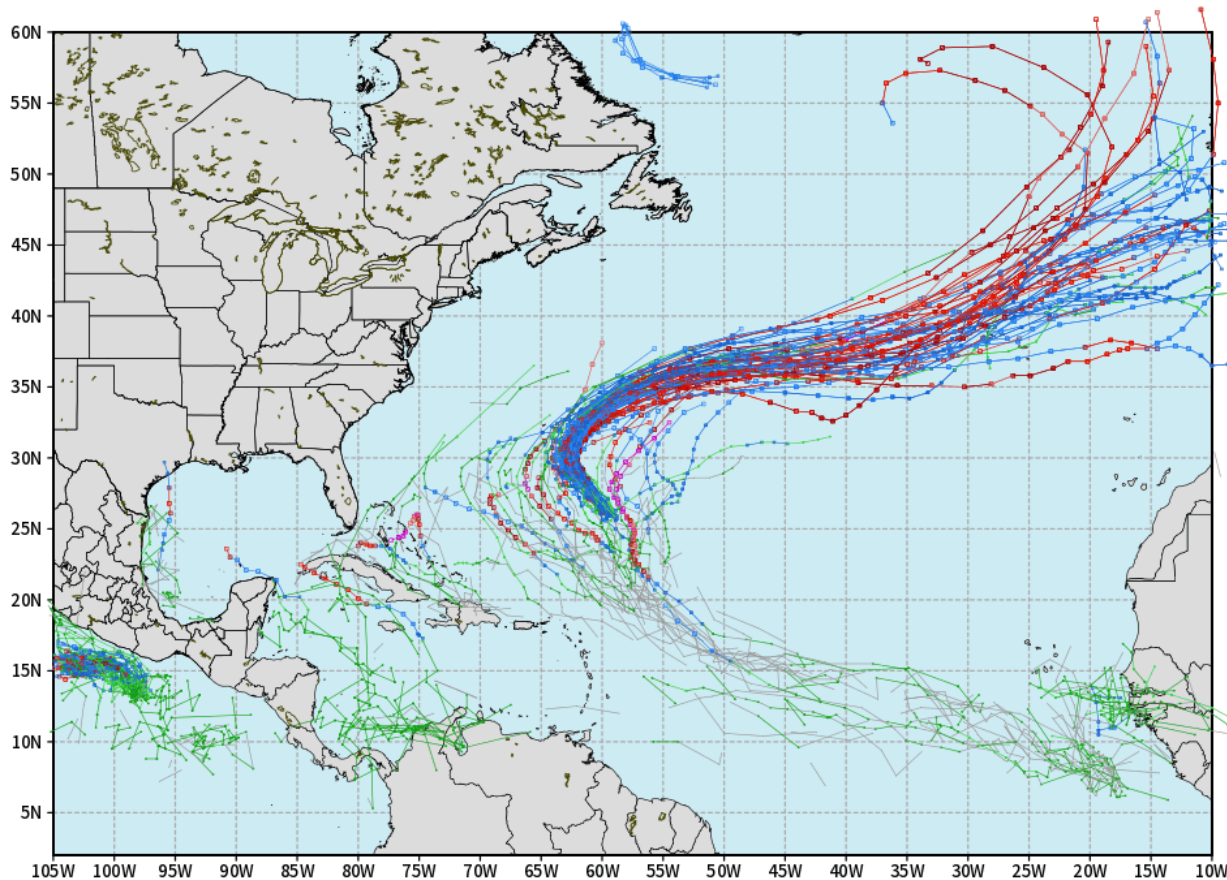


# Houston Pilots Tropical Update

## 10-Day Tropical Outlook

ECMWF ATLANTIC EPS Cyclone Locations --> Next [10-days]  
INIT: 00Z21SEP2025 --> UNTIL 00Z01OCT2025

o-o ENSEMBLE MEAN  
o-o 1000 - 1010 hPa  
o-o 980 - 999 hPa  
o-o 960 - 979 hPa  
o-o 950 - 959 hPa  
o-o < 950 hPa



[weathermodels.com](http://weathermodels.com)

No tropical development favored in the Gulf over the next 7-10 days.

Tropical Storm Gabrielle is favored to stay out in the Atlantic, away from the US East Coast.

Additional waves behind Gabrielle are also currently favored to stay off the US East Coast.



# Houston Pilots Visibility Chart (miles)



Visiblity	Sun 3 pm	Sun 4 pm	Sun 5 pm	Sun 6 pm	Sun 7 pm	Sun 8 pm	Sun 9 pm	Sun 10 pm	Sun 11 pm	Mon 12 am	Mon 1 am	Mon 2 am	Mon 3 am	Mon 4 am	Mon 5 am	Mon 6 am	Mon 7 am	Mon 8 am	Mon 9 am	Mon 10 am	Mon 11 am	Mon 12 pm	Mon 1 pm	Mon 2 pm
Houston Pilots N - 610 Bridge	10	10	10	10	10	10	10	10	10	10	10	10	10	10	10	10	10	9	7.9	10	10	10	10	10
Houston Pilots M - Kinder 1	10	10	10	10	10	10	10	10	10	10	10	10	10	10	10	10	10	9	7.9	10	10	10	10	10
Houston Pilots L - Greens Bayou	10	10	10	10	10	10	10	10	10	10	10	10	10	10	10	10	10	9	6.9	10	10	10	10	10
Houston Pilots K - Shell Crude	10	10	10	10	10	10	10	10	10	10	10	10	10	10	10	10	10	9	6.9	10	10	10	10	10
Houston Pilots J - Lynchburg Ferries	10	10	10	10	10	10	10	10	10	10	10	10	10	10	10	10	10	7.9	6.9	10	10	10	10	10
Houston Pilots I - Exxon 3	10	10	10	10	10	10	10	10	10	10	10	10	10	10	10	10	10	9	6.9	10	10	10	10	10
Houston Pilots H - Morgans Point	10	10	10	10	10	10	10	10	10	10	10	10	10	10	10	10	10	10	6.9	10	10	10	10	10
Houston Pilots G - 75/76	10	10	10	10	10	10	10	10	10	10	10	10	10	10	10	10	10	10	7.9	10	10	10	10	10
Houston Pilots F - 63/64	10	10	10	10	10	10	10	10	10	10	10	10	10	10	10	10	10	10	9	10	10	10	10	10
Houston Pilots E - 51/52	10	10	10	10	10	10	10	10	10	10	10	10	10	10	10	10	10	10	9	10	10	10	10	10
Houston Pilots D - 37/38	10	10	10	10	10	10	10	10	10	10	10	10	10	10	10	10	10	10	9	10	10	10	10	10
Houston Pilots C - 25/26	10	10	10	10	10	10	10	10	10	10	10	10	10	10	10	10	10	10	9	10	10	10	10	10
Houston Pilots B - 11/12	10	10	10	10	10	10	10	10	10	10	10	10	10	10	10	10	10	10	9	10	10	10	10	10
Houston Pilots A - 1 & 2 Bravo	10	10	10	10	10	10	10	10	10	10	10	10	10	10	10	10	10	10	7.9	10	10	10	10	10

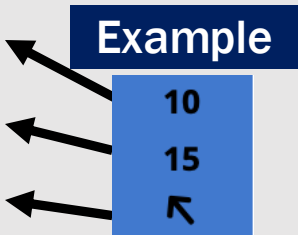
NOTE: This is automated data that may/may not agree with the official BAM thinking that’s found on the daily slides or special visibility report slides. This data should be used as a guide only



# Houston Pilots Wind Chart



Sustained Wind 10 Knots  
Gusts 15 Knots  
Wind from the SE



Wind	Sun 3 pm	Sun 4 pm	Sun 5 pm	Sun 6 pm	Sun 7 pm	Sun 8 pm	Sun 9 pm	Sun 10 pm	Sun 11 pm	Mon 12 am	Mon 1 am	Mon 2 am	Mon 3 am	Mon 4 am	Mon 5 am	Mon 6 am	Mon 7 am	Mon 8 am	Mon 9 am	Mon 10 am	Mon 11 am	Mon 12 pm	Mon 1 pm	Mon 2 pm
Houston Pilots N - 610 Bridge	8 16 ↖	8 17 ↖	8 17 ↖	9 17 ↖	9 17 ↖	8 16 ↖	8 15 ↖	6 13 ↖	6 10 ↖	5 10 ↖	5 9 ↖	3 8 ↖	3 8 ↖	3 8 ↖	3 7 ↖	3 7 ↖	3 7 ↖	3 8 ↖	5 9 ↖	6 12 ↖	6 13 ↖	8 15 ↖	8 15 ↖	8 17 ↖
Houston Pilots M - Kinder 1	8 16 ↖	8 17 ↖	9 17 ↖	9 17 ↖	9 17 ↖	8 15 ↖	8 15 ↖	6 13 ↖	6 10 ↖	5 10 ↖	5 9 ↖	3 8 ↖	3 8 ↖	3 7 ↖	3 7 ↖	3 7 ↖	3 7 ↖	3 8 ↖	5 9 ↖	6 12 ↖	7 13 ↖	8 15 ↖	8 15 ↖	8 17 ↖
Houston Pilots L - Greens Bayou	8 17 ↖	9 17 ↖	9 17 ↖	9 17 ↖	9 17 ↖	8 15 ↖	8 15 ↖	6 13 ↖	6 10 ↖	5 10 ↖	5 9 ↖	3 8 ↖	3 8 ↖	3 7 ↖	3 7 ↖	3 7 ↖	3 7 ↖	3 8 ↖	5 9 ↖	6 12 ↖	7 13 ↖	8 15 ↖	8 15 ↖	8 17 ↖
Houston Pilots K - Shell Crude	9 17 ↖	9 17 ↖	9 18 ↖	9 17 ↖	9 17 ↖	8 15 ↖	7 15 ↖	6 13 ↖	6 10 ↖	5 10 ↖	5 9 ↖	3 8 ↖	3 8 ↖	3 8 ↖	3 8 ↖	3 7 ↖	3 7 ↖	3 8 ↖	5 9 ↖	6 12 ↖	7 13 ↖	8 15 ↖	8 16 ↖	9 17 ↖
Houston Pilots J - Lynchburg Ferries	9 17 ↖	9 17 ↖	10 18 ↖	9 17 ↖	9 17 ↖	8 15 ↖	7 15 ↖	6 13 ↖	6 10 ↖	5 10 ↖	3 9 ↖	3 8 ↖	3 8 ↖	3 7 ↖	3 7 ↖	3 7 ↖	3 7 ↖	3 8 ↖	3 9 ↖	6 12 ↖	6 13 ↖	8 15 ↖	8 15 ↖	9 17 ↖
Houston Pilots I - Exxon 3	12 18 ↖	13 20 ↖	13 20 ↖	13 18 ↖	13 18 ↖	13 17 ↖	12 16 ↖	10 15 ↖	10 15 ↖	10 14 ↖	9 14 ↖	9 13 ↖	8 13 ↖	8 12 ↖	8 12 ↖	8 10 ↖	7 10 ↖	7 9 ↖	8 12 ↖	8 13 ↖	9 14 ↖	10 16 ↖	10 16 ↖	12 18 ↖
Houston Pilots H - Morgans Point	12 18 ↖	13 20 ↖	13 20 ↖	13 18 ↖	13 17 ↖	12 17 ↖	12 16 ↖	10 15 ↖	10 15 ↖	10 14 ↖	10 14 ↖	9 13 ↖	8 12 ↖	8 12 ↖	8 10 ↖	8 10 ↖	7 10 ↖	7 10 ↖	8 12 ↖	8 13 ↖	9 15 ↖	10 16 ↖	10 16 ↖	12 18 ↖
Houston Pilots G - 75/76	12 18 ↖	13 20 ↖	13 20 ↖	13 18 ↖	13 18 ↖	13 17 ↖	13 17 ↖	12 16 ↖	12 17 ↖	12 16 ↖	10 16 ↖	10 16 ↖	10 15 ↖	10 15 ↖	9 14 ↖	9 13 ↖	8 13 ↖	8 12 ↖	8 13 ↖	9 14 ↖	10 15 ↖	10 16 ↖	10 17 ↖	12 18 ↖
Houston Pilots F - 63/64	10 18 ↖	12 18 ↖	13 20 ↖	13 18 ↖	13 17 ↖	12 17 ↖	12 16 ↖	12 16 ↖	12 17 ↖	12 16 ↖	10 16 ↖	10 16 ↖	10 15 ↖	10 15 ↖	10 14 ↖	9 13 ↖	8 13 ↖	8 12 ↖	8 13 ↖	9 14 ↖	10 15 ↖	10 16 ↖	10 16 ↖	10 17 ↖
Houston Pilots E - 51/52	10 17 ↖	12 18 ↖	12 18 ↖	12 17 ↖	12 17 ↖	13 17 ↖	13 17 ↖	13 17 ↖	13 17 ↖	12 17 ↖	12 17 ↖	12 16 ↖	10 16 ↖	10 15 ↖	10 15 ↖	10 14 ↖	9 14 ↖	8 13 ↖	9 13 ↖	9 14 ↖	10 15 ↖	10 16 ↖	10 17 ↖	12 17 ↖
Houston Pilots D - 37/38	10 17 ↖	10 17 ↖	12 17 ↖	12 17 ↖	12 17 ↖	13 17 ↖	13 17 ↖	13 17 ↖	13 17 ↖	13 17 ↖	12 17 ↖	12 16 ↖	10 16 ↖	10 16 ↖	10 15 ↖	10 15 ↖	9 14 ↖	9 13 ↖	9 13 ↖	10 15 ↖	10 16 ↖	10 16 ↖	10 17 ↖	12 17 ↖
Houston Pilots C - 25/26	10 16 ↖	10 17 ↖	10 17 ↖	12 17 ↖	12 17 ↖	12 16 ↖	12 16 ↖	12 16 ↖	12 16 ↖	12 16 ↖	10 16 ↖	10 16 ↖	10 15 ↖	10 15 ↖	10 15 ↖	9 14 ↖	9 14 ↖	9 13 ↖	9 14 ↖	10 15 ↖	10 16 ↖	10 16 ↖	10 16 ↖	10 17 ↖
Houston Pilots B - 11/12	10 16 ↖	10 16 ↖	10 16 ↖	10 17 ↖	10 17 ↖	10 16 ↖	10 16 ↖	10 16 ↖	10 16 ↖	9 16 ↖	9 16 ↖	9 16 ↖	9 15 ↖	8 15 ↖	8 15 ↖	8 14 ↖	8 14 ↖	8 13 ↖	8 13 ↖	9 14 ↖	10 15 ↖	10 16 ↖	10 16 ↖	10 17 ↖
Houston Pilots A - 1 & 2 Bravo	10 16 ↖	10 16 ↖	10 16 ↖	10 17 ↖	10 17 ↖	12 17 ↖	12 17 ↖	13 17 ↖	13 17 ↖	13 17 ↖	13 17 ↖	13 17 ↖	12 17 ↖	12 17 ↖	10 16 ↖	10 16 ↖	10 16 ↖	10 15 ↖	10 15 ↖	10 16 ↖	10 16 ↖	10 16 ↖	10 17 ↖	10 17 ↖

NOTE: This is automated data that may/may not agree with the official BAM thinking that's found on the daily slides.  
This data should be used as a guide only.



# Houston Pilots: SUN. 9/21/2025

## Forecast Discussion

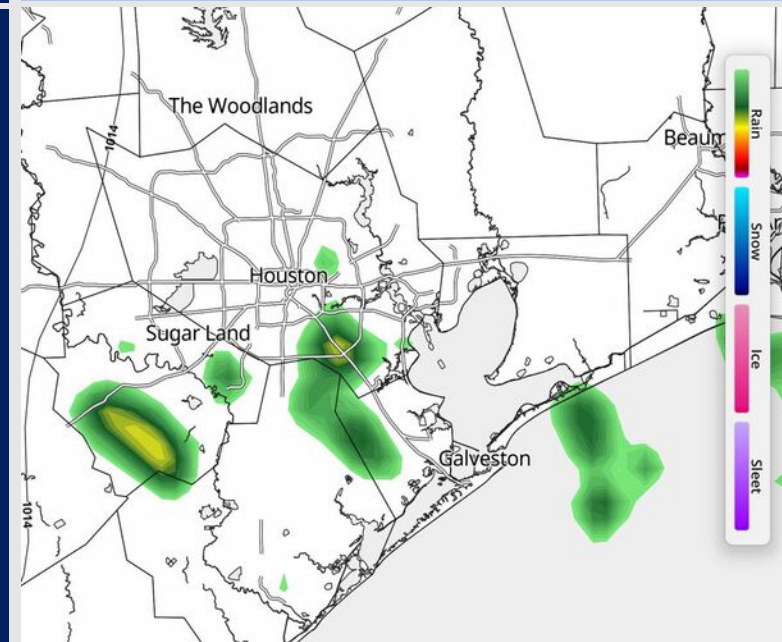
**Precip:** Hit/miss showers and storms in play for all Stations through 6 PM. Lightning and brief wind gusts of 20 kts will be possible in storms.

**Wind:** Winds will be out of the SE for the rest of the day. **N of Morgan's Point:** Winds will be at 3 – 8 kts. **S of Morgan's Point:** Winds will be at 6 – 11 kts. Winds will be slightly higher at the Boarding Station at 10 – 15 kts.

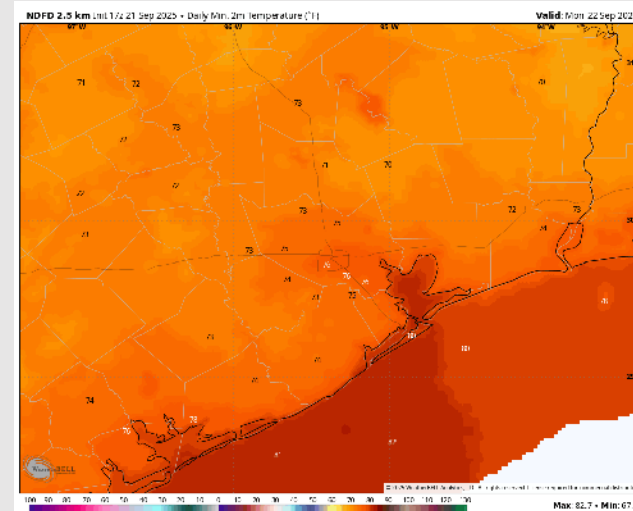
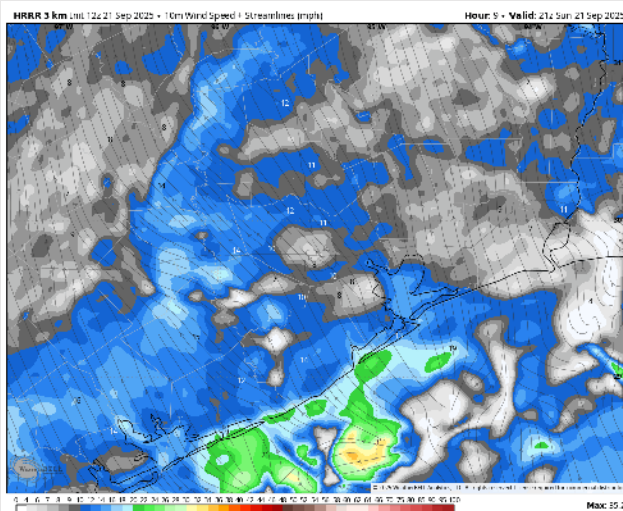
**Low Temps:** **N of Morgan's Point:** Mid 70s F. **S of Morgan's Point:** Near 80 F.

**Visibility:** No fog concerns today, however, visibilities may be reduced under a heavier downpour.

## Precip Image: 4 PM CT



**Wind Speed:**  
4 PM CT



**Low Temps**  
**MON AM**



# Houston Pilots: MON. 9/22/2025

## Forecast Discussion

**Precip:** Isolated showers will be possible from 5AM – 4PM Monday. More dry time than not is favored through that timeframe.

**Wind:** Winds will be generally out of the SE Monday. **N of Morgan's Point:** Winds will be at 3 – 8 kts. **S of Morgan's Point:** Winds will be at 5 – 10 kts.

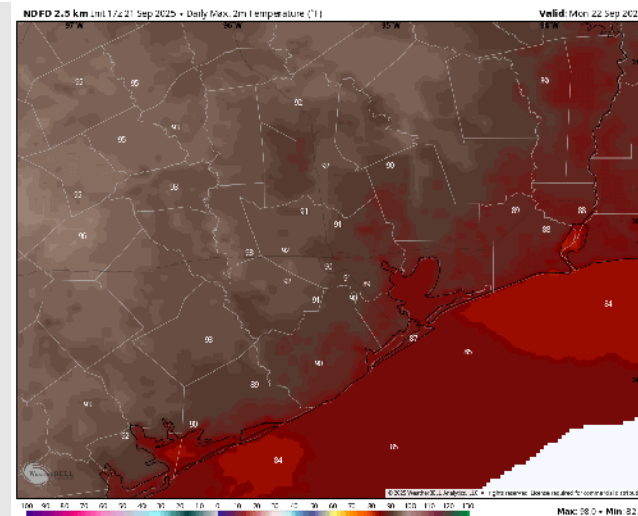
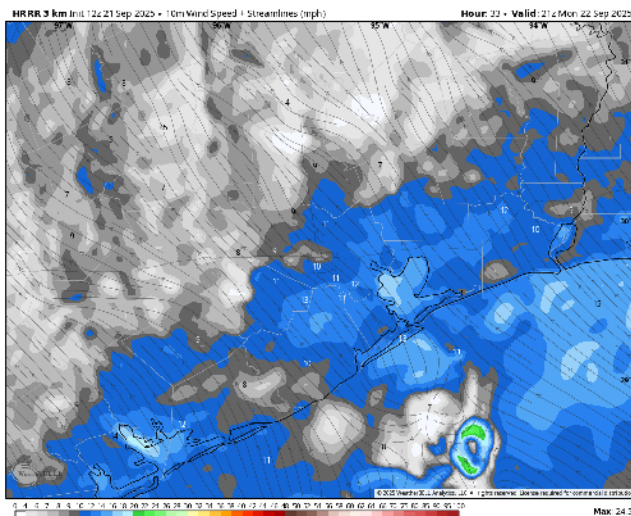
**High Temps:** **N of Morgan's Point:** Upper 80s to low 90s F. **S of Morgan's Point:** Upper 80s F.

**Visibility:** No visibility concerns Monday.

## Precip Image: 5 AM CT



**Wind Speed:**  
4 PM CT



**High Temps**  
**Monday**



# Houston Pilots: TUE. 9/23/2025

## Forecast Discussion

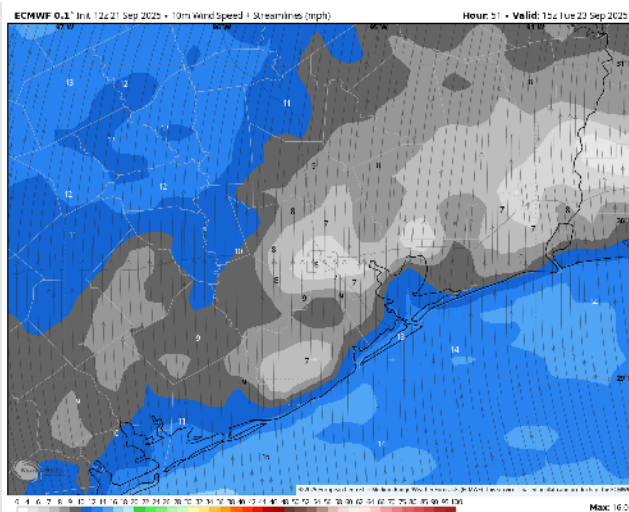
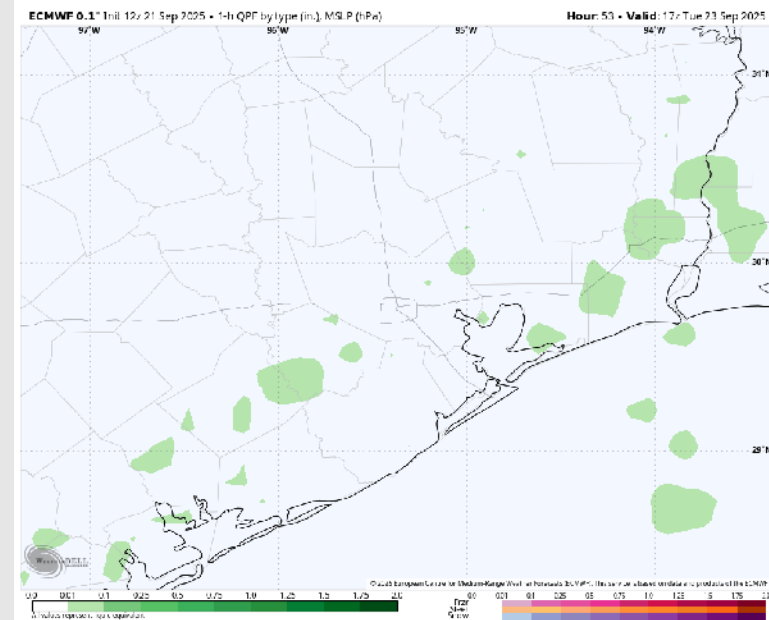
**Precip:** Hit/miss showers possible for all Stations between 7 AM and 6 PM.

**Wind:** Winds will be out of the S/SE Tuesday. **N of Morgan's Point:** Winds will be at 3 – 8 kts. **S of Morgan's Point:** Winds will be at 7 – 12 kts.

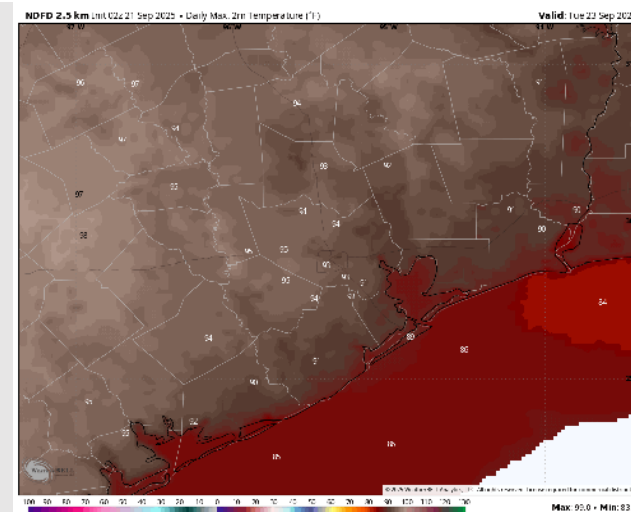
**High Temps:** **N of Morgan's Point:** Low 90s F. **S of Morgan's Point:** Upper 80s F.

**Visibility:** No visibility concerns Tuesday.

## Precip Image: 12 PM CT



Wind Speed:  
10 AM CT

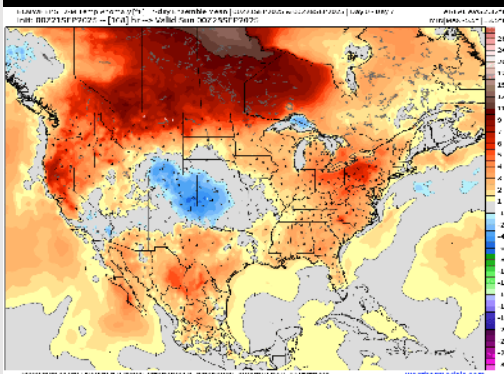


High Temps  
Tuesday

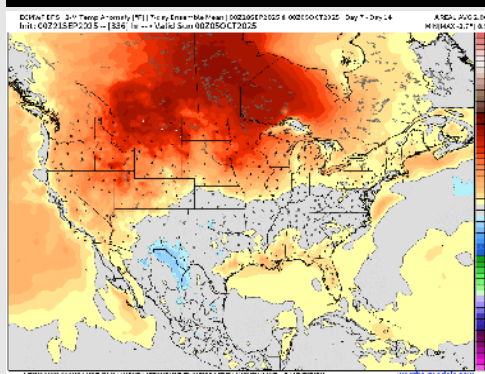


# Houston Pilots: 9/21/25

## Next 7 Day Temperature Departure



## 8-14 Day Temperature Departure

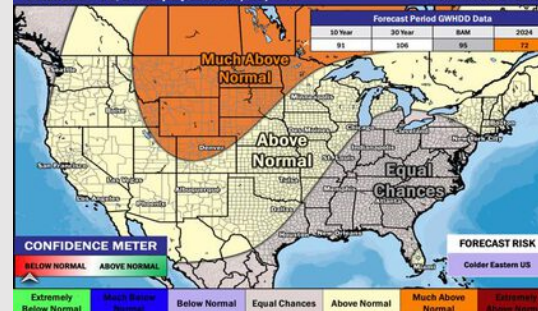


## 15-30 Day Temperature Departure

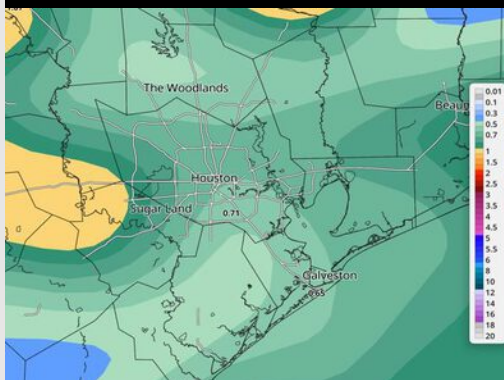
### Week 3/4 Temperature Outlook

October 3 - 16, 2025 | Updated: 9/19/25

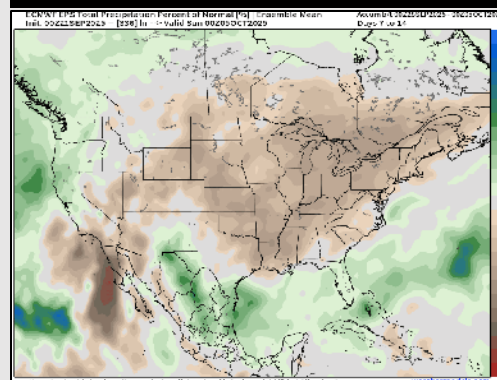
Forecaster: Walts



## Next 7 Day Total Precipitation



## 8-14 Day % of Average Precip.

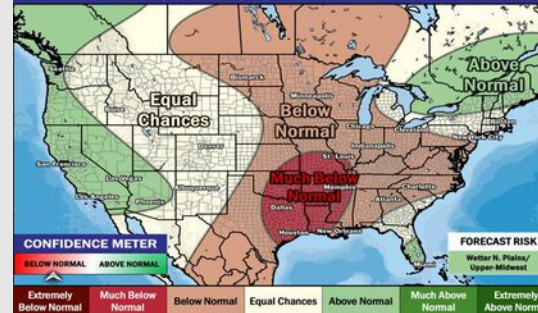


## 15-30 Day % of Average Precip.

### Week 3/4 Precipitation Outlook

October 3 - 16, 2025 | Updated: 9/19/25

Forecaster: Walts



- Temps are expected to be above normal for the next 7 days with scattered storm chances throughout the weekend.
- Above normal temperatures and above normal rain chances are favored for days 8 - 14.
- Near normal temperatures are favored for early to mid October with much below normal rainfall chances.