

# Houston Pilots Forecast Package



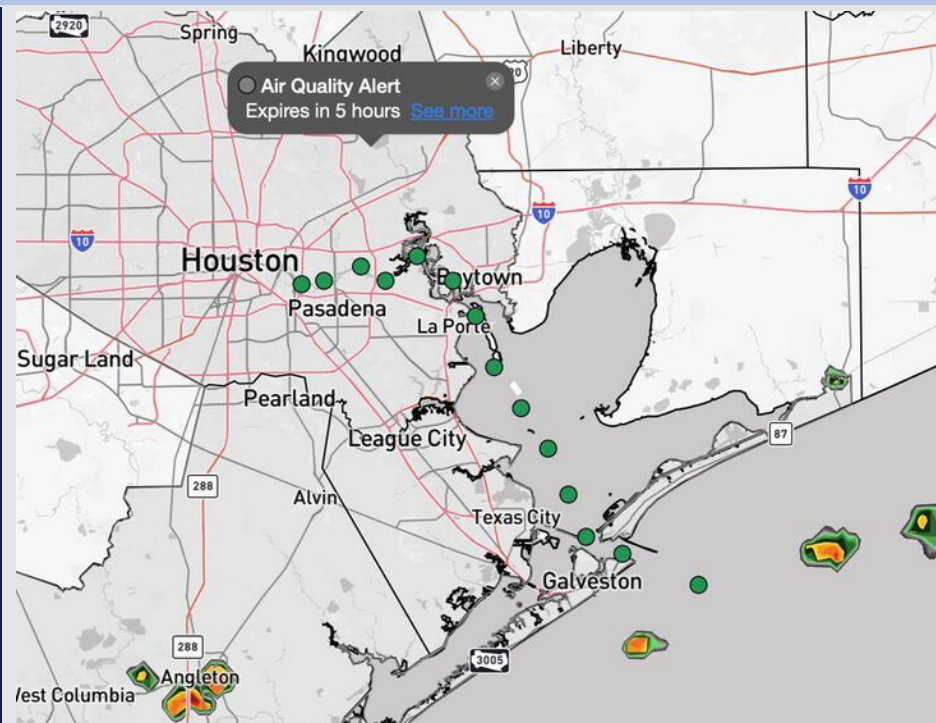
Updated: 12:45 PM CT

Thursday, September 18, 2025

Forecaster: Hope Kleitsch

## Weather Headlines

- A few storms with lightning and wind gusts of 20 – 25 kts will be in play through 9PM today.
- Isolated showers will be possible FRI and SAT.
- No tropical activity is favored the next 7-10 days.



**Current Radar: 12:45 PM CT**

As always, please do not hesitate to reach out to us with any forecast questions at **(317)-560-8122**. Press **1** for forecast questions.

You can also access real-time forecast updates and 24/7 meteorological chat assistance on your **Clarity** app. Click [here](#) for login assistance.

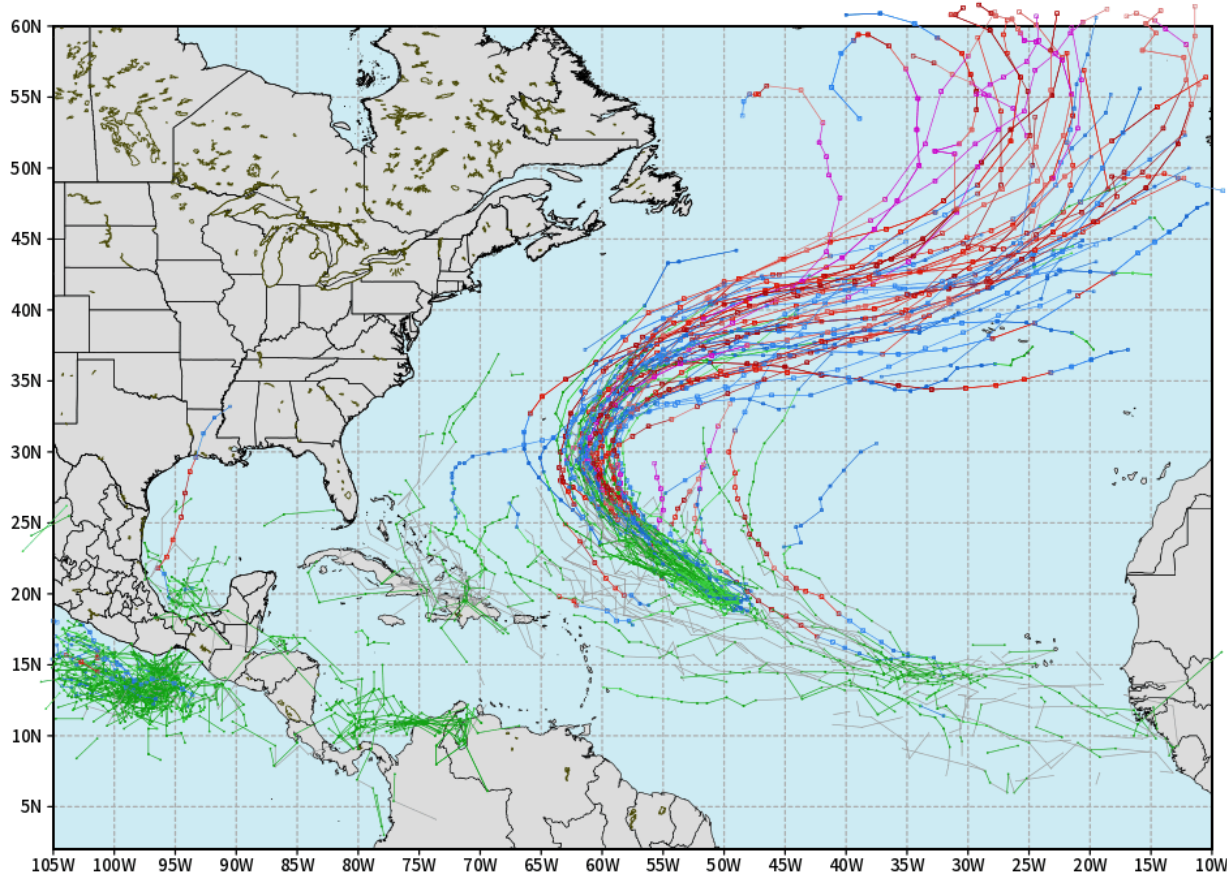


# Houston Pilots Tropical Update

## 10-Day Tropical Outlook

ECMWF ATLANTIC EPS Cyclone Locations --> Next [10-days]  
INIT: 00Z18SEP2025 --> UNTIL 00Z28SEP2025

o-o ENSEMBLE MEAN  
o-o 1000 - 1010 hPa  
o-o 980 - 999 hPa  
o-o 960 - 979 hPa  
o-o 950 - 959 hPa  
o-o < 950 hPa



[weathermodels.com](http://weathermodels.com)

No tropical development favored in the Gulf over the next 7-10 days.

Tropical Storm Gabrielle has formed in the Atlantic and is favored to stay out in the Atlantic.

Additional waves behind Gabrielle are also currently favored to stay off the US East Coast.

# Houston Pilots Visibility Chart (miles)



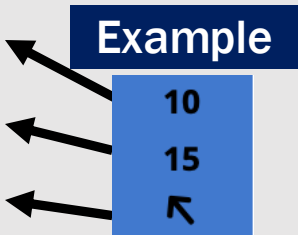
Visibility	Thu 2 pm	Thu 3 pm	Thu 4 pm	Thu 5 pm	Thu 6 pm	Thu 7 pm	Thu 8 pm	Thu 9 pm	Thu 10 pm	Thu 11 pm	Fri 12 am	Fri 1 am	Fri 2 am	Fri 3 am	Fri 4 am	Fri 5 am	Fri 6 am	Fri 7 am	Fri 8 am	Fri 9 am	Fri 10 am	Fri 11 am	Fri 12 pm	Fri 1 pm
Houston Pilots N - 610 Bridge	10	10	10	10	10	10	10	10	10	10	10	10	10	10	10	10	10	10	10	10	10	10	10	10
Houston Pilots M - Kinder 1	10	10	10	10	10	10	10	10	10	10	10	10	10	10	10	10	10	10	10	10	10	10	10	10
Houston Pilots L - Greens Bayou	10	10	10	10	10	10	10	10	10	10	10	10	10	10	10	10	10	10	10	10	10	10	10	10
Houston Pilots K - Shell Crude	10	10	10	10	10	10	10	10	10	10	10	10	10	10	10	10	10	10	10	10	10	10	10	10
Houston Pilots J - Lynchburg Ferries	10	10	10	10	10	10	10	10	10	10	10	10	10	10	10	10	10	10	10	7.9	10	10	10	10
Houston Pilots I - Exxon 3	10	10	10	10	10	10	10	10	10	10	10	10	10	10	10	10	10	10	10	7.9	10	10	10	10
Houston Pilots H - Morgans Point	10	10	10	10	10	10	10	10	10	10	10	10	10	10	10	10	10	10	10	10	10	10	10	10
Houston Pilots G - 75/76	10	10	10	10	10	10	10	10	10	10	10	10	10	10	10	10	10	10	10	10	10	10	10	10
Houston Pilots F - 63/64	10	10	10	10	10	10	10	10	10	10	10	10	10	10	10	10	10	10	10	10	10	10	10	10
Houston Pilots E - 51/52	10	10	10	10	10	10	10	10	10	10	10	10	10	10	10	10	10	10	10	10	10	10	10	10
Houston Pilots D - 37/38	10	10	10	10	10	10	10	10	10	10	10	10	10	10	10	10	10	10	10	10	10	10	10	10
Houston Pilots C - 25/26	10	10	10	10	10	10	10	10	10	10	10	10	10	10	10	10	10	10	10	10	10	10	10	10
Houston Pilots B - 11/12	10	10	10	10	10	10	10	10	10	10	10	10	10	10	10	10	10	10	10	10	10	10	10	10
Houston Pilots A - 1 & 2 Bravo	10	10	10	10	10	10	10	10	10	10	10	10	10	10	10	10	10	10	10	9	10	10	10	10

**NOTE:** This is automated data that may/may not agree with the official BAM thinking that's found on the daily slides or special visibility report slides. This data should be used as a guide only

# Houston Pilots Wind Chart



Sustained Wind 10 Knots  
Gusts 15 Knots  
Wind from the SE



Wind	Thu 2 pm	Thu 3 pm	Thu 4 pm	Thu 5 pm	Thu 6 pm	Thu 7 pm	Thu 8 pm	Thu 9 pm	Thu 10 pm	Thu 11 pm	Fri 12 am	Fri 1 am	Fri 2 am	Fri 3 am	Fri 4 am	Fri 5 am	Fri 6 am	Fri 7 am	Fri 8 am	Fri 9 am	Fri 10 am	Fri 11 am	Fri 12 pm	Fri 1 pm
Houston Pilots N - 610 Bridge	5 10 ↖	6 12 ↖	6 12 ↖	6 13 ↖	6 13 ↖	7 13 ↖	7 13 ↖	6 10 ↖	5 9 ↖	3 8 ↖	3 7 ↖	2 6 ↖	1 5 ↖	1 5 ↖	1 5 ↓	1 5 ↓	1 5 ↓	2 6 ↓	2 6 ↓	3 7 ↓	3 7 ↓	5 9 ↖	6 10 ↖	6 12 ↖
Houston Pilots M - Kinder 1	5 10 ↖	6 12 ↖	6 12 ↖	6 13 ↖	6 13 ↖	7 13 ↖	7 13 ↖	6 10 ↖	5 9 ↖	3 8 ↖	3 7 ↖	2 6 ↖	1 5 ↖	1 5 ↖	1 5 ↓	1 5 ↓	1 5 ↓	2 6 ↓	2 6 ↓	3 7 ↓	3 7 ↓	5 9 ↖	6 10 ↖	6 12 ↖
Houston Pilots L - Greens Bayou	5 10 ↖	6 12 ↖	6 12 ↖	6 13 ↖	6 13 ↖	7 13 ↖	7 13 ↖	6 10 ↖	5 9 ↖	3 7 ↖	3 7 ↖	2 5 ↖	1 5 ↖	1 3 ↖	1 3 ↓	1 5 ↓	1 5 ↓	2 5 ↓	2 6 ↓	3 7 ↓	3 7 ↓	5 9 ↖	6 9 ↖	6 12 ↖
Houston Pilots K - Shell Crude	6 10 ↖	6 12 ↖	6 12 ↖	7 13 ↖	7 13 ↖	7 13 ↖	7 12 ↖	6 10 ↖	5 9 ↖	3 7 ↖	3 7 ↖	2 6 ↖	1 5 ↖	1 5 ↖	1 5 ↓	1 5 ↓	1 5 ↓	2 5 ↓	2 6 ↓	3 7 ↓	3 7 ↓	5 9 ↖	6 9 ↖	6 12 ↖
Houston Pilots J - Lynchburg Ferries	5 10 ↖	6 10 ↖	6 12 ↖	6 13 ↖	6 13 ↖	6 13 ↖	6 12 ↖	6 10 ↖	3 9 ↖	3 7 ↖	2 6 ↖	1 5 ↖	1 5 ↖	1 3 ↖	1 3 ↓	1 5 ↓	1 5 ↓	2 5 ↓	2 6 ↓	3 6 ↓	3 7 ↓	3 9 ↖	6 9 ↖	6 10 ↖
Houston Pilots I - Exxon 3	7 13 ↖	8 13 ↖	8 14 ↖	9 14 ↖	9 14 ↖	10 14 ↖	10 14 ↖	9 13 ↖	8 12 ↖	7 10 ↖	6 9 ↖	6 7 ↖	5 7 ↖	5 7 ↖	5 7 ↖	5 7 ↖	5 7 ↖	6 7 ↖	6 8 ↖	6 8 ↖	6 10 ↖	7 10 ↖	7 12 ↖	7 12 ↖
Houston Pilots H - Morgans Point	7 13 ↖	8 14 ↖	8 14 ↖	9 14 ↖	9 14 ↖	10 14 ↖	10 14 ↖	9 13 ↖	8 12 ↖	7 10 ↖	6 9 ↖	6 8 ↖	5 7 ↖	5 7 ↖	5 7 ↖	5 7 ↖	5 7 ↖	5 7 ↖	6 8 ↖	6 8 ↖	7 10 ↖	7 12 ↖	7 12 ↖	7 12 ↖
Houston Pilots G - 75/76	6 13 ↖	7 13 ↖	8 14 ↖	9 15 ↖	9 15 ↖	10 15 ↖	10 15 ↖	10 14 ↖	9 13 ↖	8 12 ↖	8 10 ↖	7 9 ↖	6 8 ↖	6 8 ↖	6 7 ↖	6 7 ↖	6 8 ↖	6 8 ↖	6 9 ↖	7 9 ↖	7 10 ↖	8 13 ↖	7 12 ↖	7 13 ↖
Houston Pilots F - 63/64	6 12 ↖	7 13 ↖	8 14 ↖	8 15 ↖	9 15 ↖	9 14 ↖	10 15 ↖	9 14 ↖	8 13 ↖	8 12 ↖	8 10 ↖	7 9 ↖	6 8 ↖	6 8 ↖	6 8 ↖	6 8 ↖	6 8 ↖	6 8 ↖	6 9 ↖	7 10 ↖	7 10 ↖	8 13 ↖	7 12 ↖	7 12 ↖
Houston Pilots E - 51/52	6 13 ↖	7 13 ↖	8 14 ↖	8 14 ↖	9 14 ↖	9 14 ↖	10 14 ↖	9 14 ↖	8 13 ↖	8 12 ↖	8 12 ↖	7 10 ↖	7 9 ↖	6 9 ↖	6 8 ↖	6 8 ↖	6 8 ↖	6 9 ↖	6 9 ↖	7 10 ↖	8 12 ↖	8 13 ↖	8 13 ↖	8 13 ↖
Houston Pilots D - 37/38	7 13 ↖	7 13 ↖	8 13 ↖	8 14 ↖	8 14 ↖	9 14 ↖	9 14 ↖	9 14 ↖	8 13 ↖	8 13 ↖	8 12 ↖	8 10 ↖	7 10 ↖	6 9 ↖	6 8 ↖	6 8 ↖	6 8 ↖	6 9 ↖	7 9 ↖	7 10 ↖	8 12 ↖	8 13 ↖	8 13 ↖	8 14 ↖
Houston Pilots C - 25/26	7 13 ↖	7 13 ↖	8 13 ↖	8 13 ↖	8 13 ↖	9 14 ↖	9 14 ↖	9 13 ↖	8 13 ↖	8 13 ↖	8 12 ↖	7 10 ↖	6 9 ↖	6 9 ↖	6 9 ↖	6 9 ↖	6 9 ↖	6 9 ↖	6 9 ↖	7 10 ↖	8 12 ↖	8 13 ↖	8 14 ↖	8 14 ↖
Houston Pilots B - 11/12	7 13 ↖	7 13 ↖	8 13 ↖	8 13 ↖	8 14 ↖	8 14 ↖	8 14 ↖	8 13 ↖	8 13 ↖	7 13 ↖	7 12 ↖	6 10 ↖	6 10 ↖	6 9 ↖	6 9 ↖	6 9 ↖	6 9 ↖	6 9 ↖	6 9 ↖	6 10 ↖	7 12 ↖	8 13 ↖	8 14 ↖	8 14 ↖
Houston Pilots A - 1 & 2 Bravo	7 13 ↖	7 14 ↖	7 13 ↖	8 14 ↖	8 14 ↖	9 14 ↖	9 15 ↖	9 14 ↖	9 14 ↖	9 14 ↖	8 13 ↖	8 13 ↖	8 12 ↖	8 12 ↖	7 10 ↖	7 10 ↖	7 10 ↖	7 10 ↖	7 10 ↖	8 12 ↖	8 13 ↖	9 14 ↖	9 15 ↖	9 15 ↖

NOTE: This is automated data that may/may not agree with the official BAM thinking that's found on the daily slides.  
This data should be used as a guide only.

# Houston Pilots: THU. 9/18/2025

## Forecast Discussion

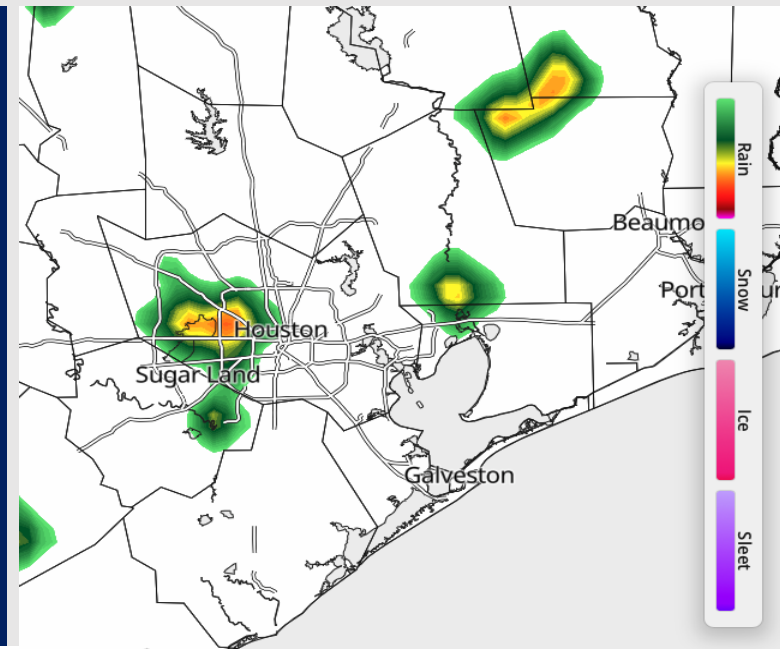
**Precip:** Scattered showers and storms in play for all Stations between through 9 PM. Lightning and isolated wind gusts of 20 – 25 kts will be in play.

**Wind:** Winds will be out of the SE for the rest of the day. **N of Morgan's Point:** Winds will be at 3 – 8 kts. **S of Morgan's Point:** Winds will be at 5 – 10 kts.

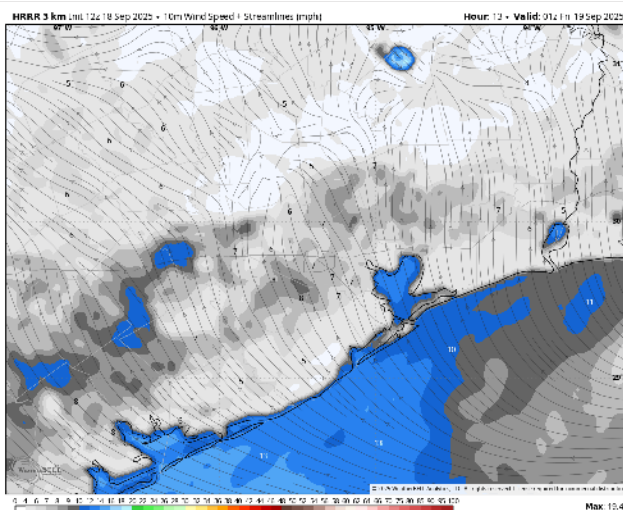
**Low Temps:** **N of Morgan's Point:** Mid 70s F. **S of Morgan's Point:** Upper 70s F.

**Visibility:** No fog concerns today, however, visibilities may be reduced under a heavier downpour.

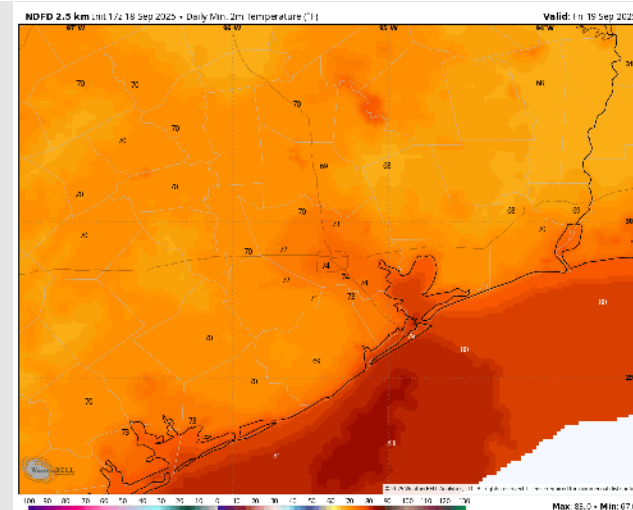
## Precip Image: 6 PM CT



**Wind Speed:**  
8 PM CT



**Low Temps**  
FRI AM



# Houston Pilots: FRI. 9/19/2025

## Forecast Discussion

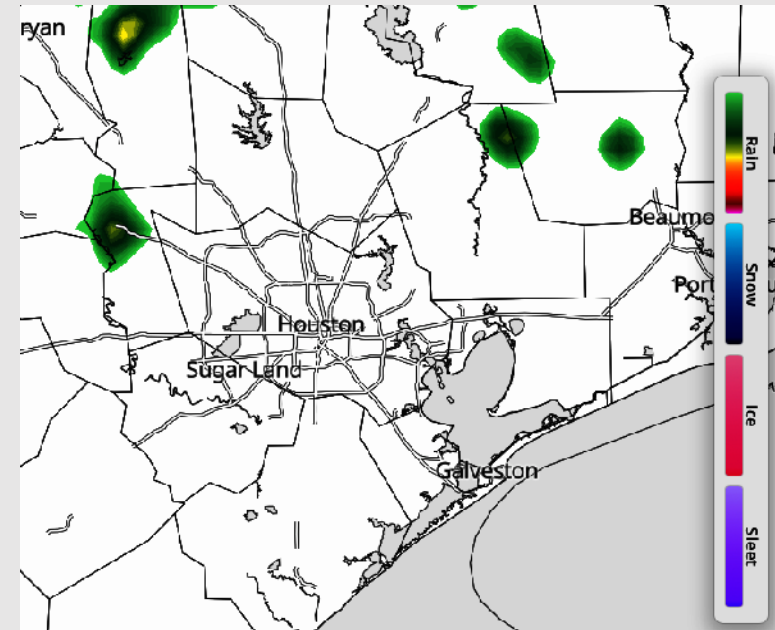
**Precip:** Hit/miss showers possible for Stations N. of Morgan's Point from 3 – 8PM. However, best coverage is anticipated to stay north of Stations.

**Wind:** Winds will rotate clockwise throughout the day before settling to be out of the SE by 2PM. **N of Morgan's Point:** Winds will be at 2 – 7 kts. **S of Morgan's Point:** Winds will be at 3 – 8 kts.

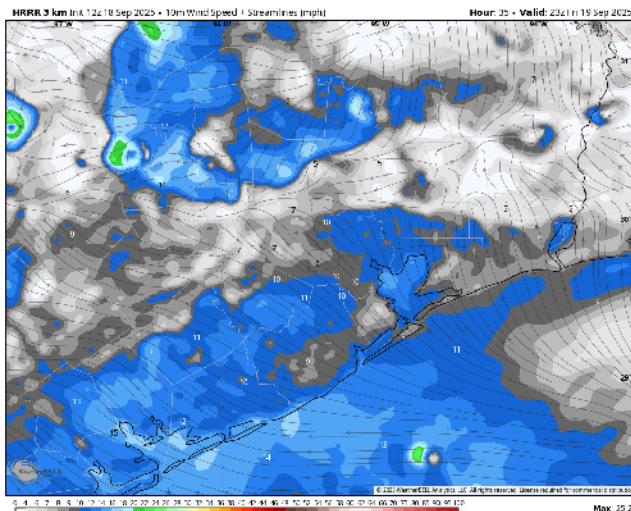
**High Temps:** **N of Morgan's Point:** Low 90s F. **S of Morgan's Point:** Upper 80s F.

**Visibility:** No visibility concerns Friday.

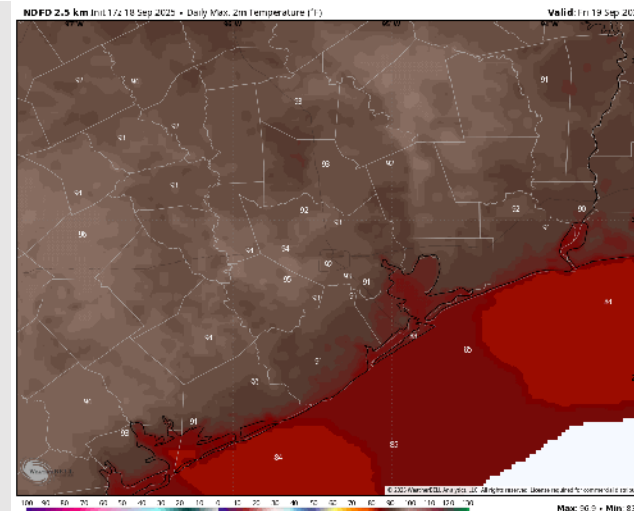
## Precip Image: 4 PM CT



Wind Speed:  
6 PM CT



High Temps  
Friday



# Houston Pilots: SAT. 9/20/2025

## Forecast Discussion

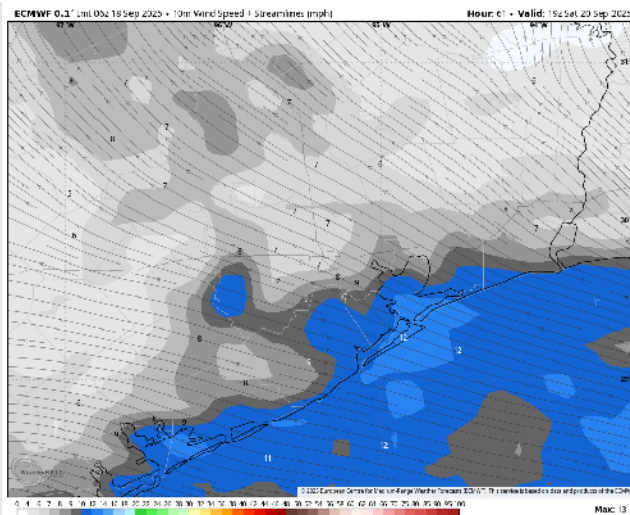
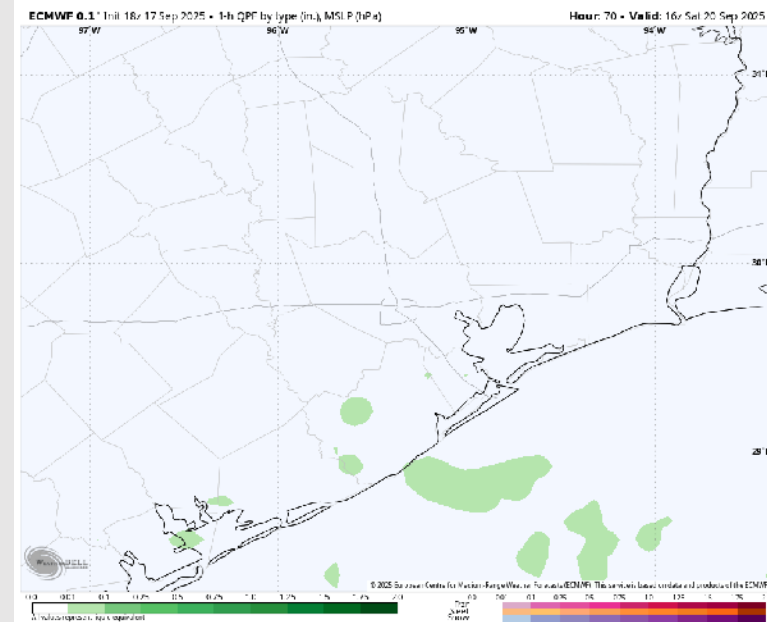
**Precip:** Isolated showers will be possible from 8AM to 2PM. The best coverage is anticipated to stay W of Stations.

**Wind:** Winds will be generally out of the E/SE. **N of Morgan's Point:** Winds will be at 3 – 8 kts. **S of Morgan's Point:** Winds will be at 6 – 11 kts.

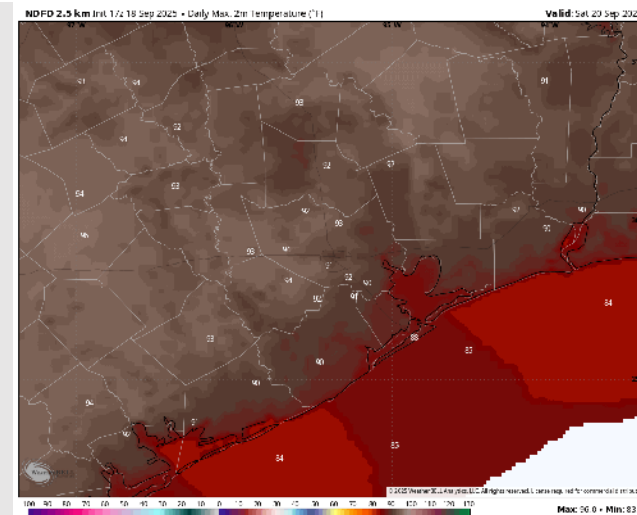
**High Temps:** **N of Morgan's Point:** Low 90s F. **S of Morgan's Point:** Upper 80s F.

**Visibility:** No visibility concerns Saturday.

## Precip Image: 11 AM CT



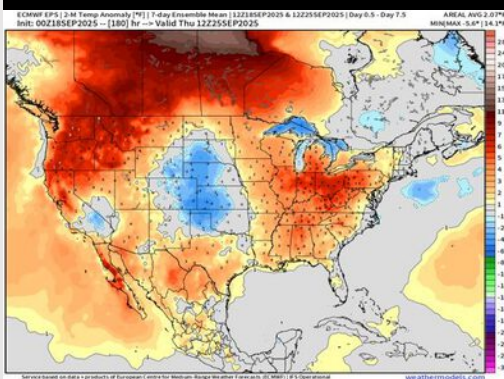
Wind Speed:  
2 PM CT



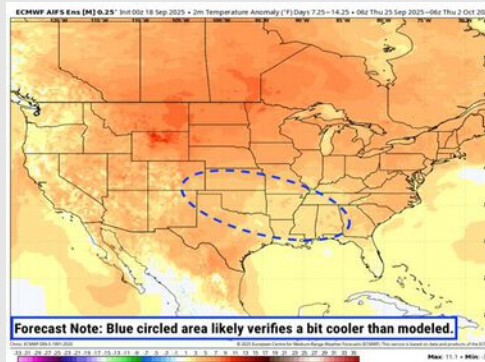
High Temps  
Saturday

# Houston Pilots: 9/18/25

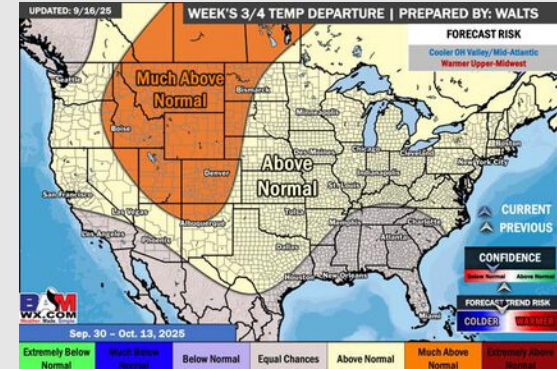
## Next 7 Day Temperature Departure



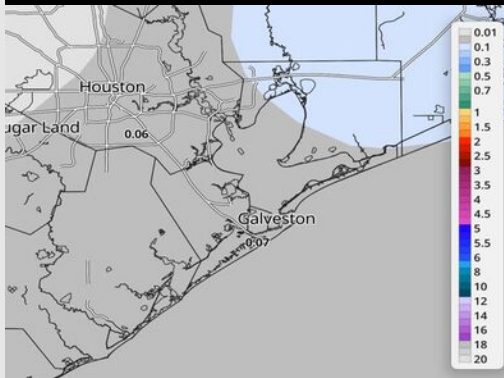
## 8-14 Day Temperature Departure



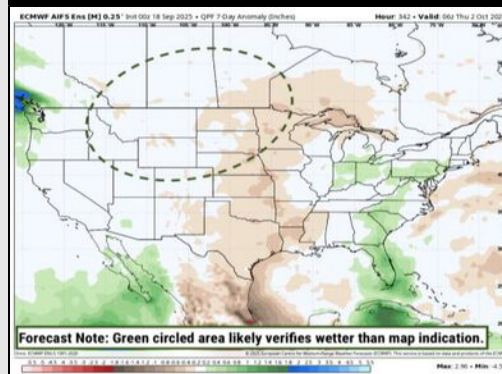
## 15-30 Day Temperature Departure



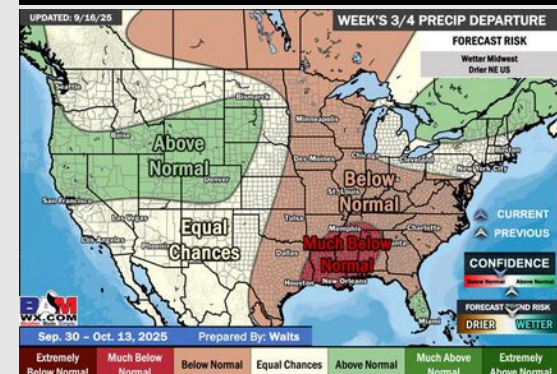
## Next 7 Day Total Precipitation



## 8-14 Day % of Average Precip.



## 15-30 Day % of Average Precip.



- Temps are expected to be above normal for the next 7 days and favoring a mostly dry weekend ahead outside of a few isolated showers.
- Above normal temperatures and below normal rain chances are favored for days 8 – 14.
- Near normal temperatures are favored for late September/early October with below normal rainfall chances.