

# Houston Pilots Forecast Package



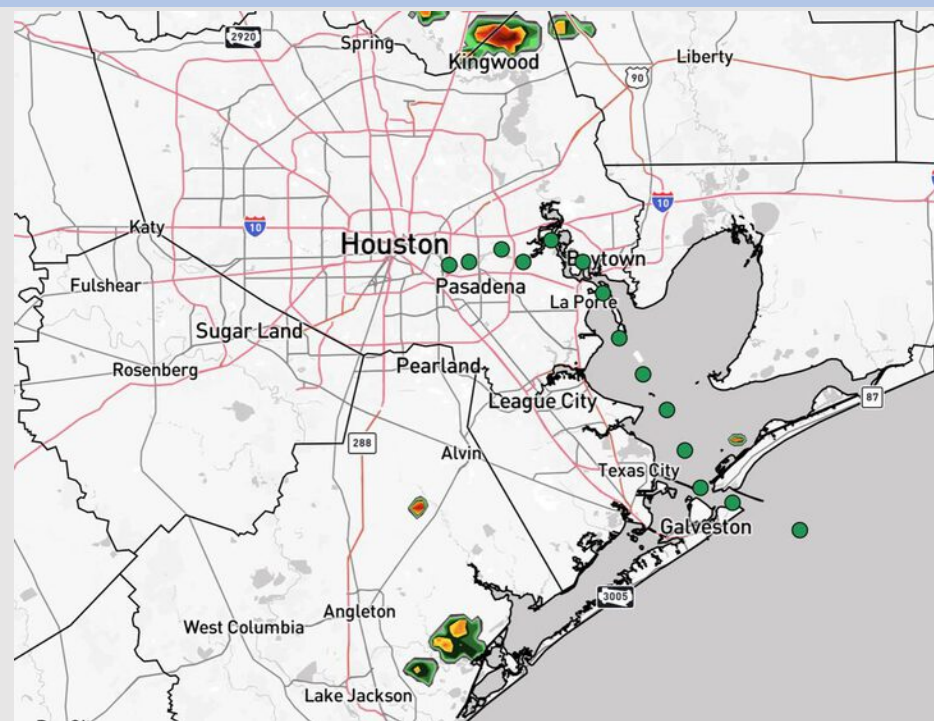
Updated: 2:15 PM CT

Tuesday, September 2, 2025

Forecaster: Hope Kleitsch

## Weather Headlines

- Scattered showers and storms possible over the next 36 hours. Isolated showers then in play for the Southernmost stations THU.
- **Risks for lightning, heavy downpours and 20-25+ kts wind gusts possible with any storms today and tomorrow.**
- No tropical activity is favored across the next 7-10 days.



**Current Radar: 2:15 PM CT**

As always, please do not hesitate to reach out to us with any forecast questions at **(317)-560-8122**. **Press 1 for forecast questions.**

You can also access real-time forecast updates and 24/7 meteorological chat assistance on your **Clarity** app. Click **here** for login assistance.

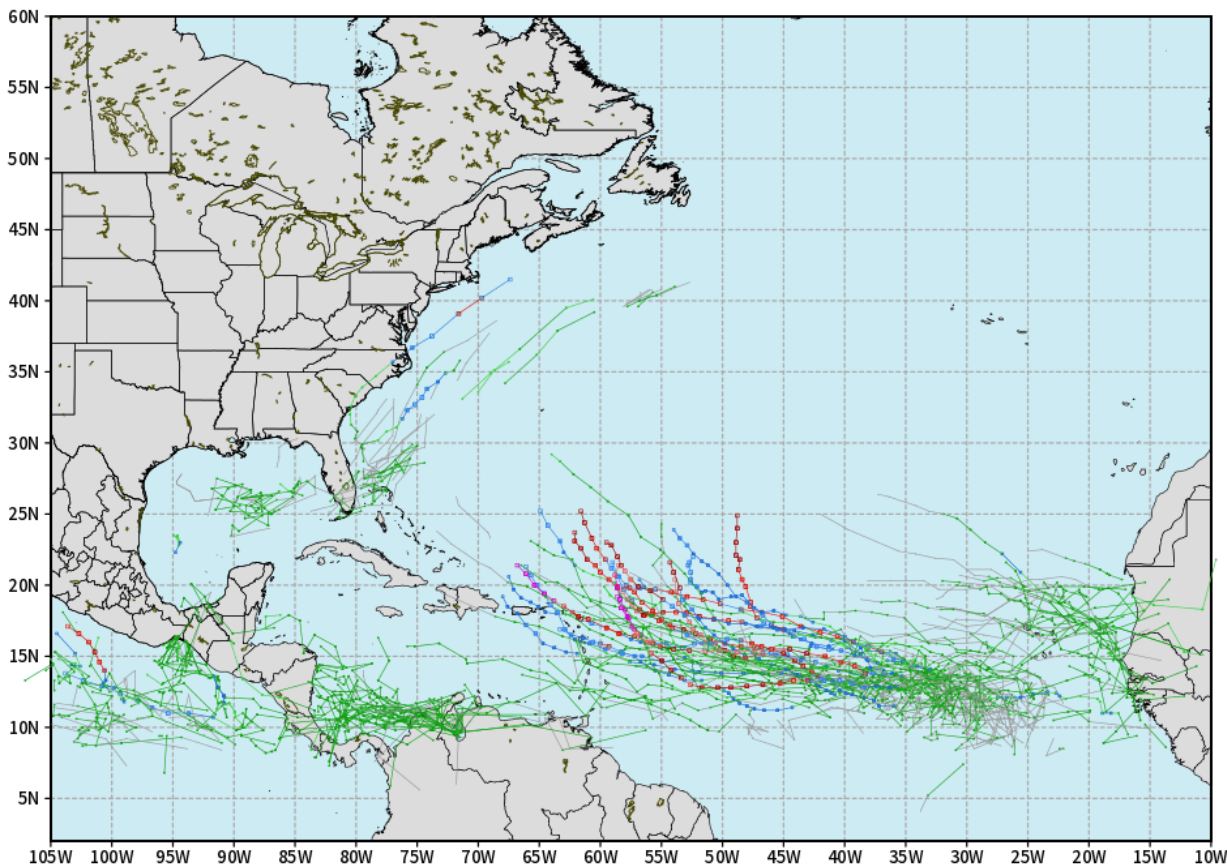


# Houston Pilots Tropical Update

## 10-Day Tropical Outlook

ECMWF ATLANTIC EPS Cyclone Locations --> Next [10-days]  
INIT: 00Z02SEP2025 --> UNTIL 00Z12SEP2025

o-o ENSEMBLE MEAN  
o-o 1000 - 1010 hPa  
o-o 980 - 999 hPa  
o-o 960 - 979 hPa  
o-o 950 - 959 hPa  
o-o < 950 hPa



[weathermodels.com](http://weathermodels.com)

No tropical development favored in the Gulf over the next 7-10 days.

Monitoring an area of potential development in the Atlantic. Current thinking is that this will recurve out to the Atlantic.

We'll need to watch for an uptick in activity from the 15<sup>th</sup> to the 30<sup>th</sup>.

# Houston Pilots Visibility Chart (miles)



Forecast Confidence

Above Normal

Below Normal

Visibility	Tue 4 pm	Tue 5 pm	Tue 6 pm	Tue 7 pm	Tue 8 pm	Tue 9 pm	Tue 10 pm	Tue 11 pm	Wed 12 am	Wed 1 am	Wed 2 am	Wed 3 am	Wed 4 am	Wed 5 am	Wed 6 am	Wed 7 am	Wed 8 am	Wed 9 am	Wed 10 am	Wed 11 am	Wed 12 pm	Wed 1 pm	Wed 2 pm	Wed 3 pm
Houston Pilots N - 610 Bridge	10	10	10	10	10	10	10	10	10	10	10	10	10	10	10	10	10	10	10	10	10	10	10	10
Houston Pilots M - Kinder 1	10	10	10	10	10	10	10	10	10	10	10	10	10	10	10	10	10	10	10	10	10	10	10	10
Houston Pilots L - Greens Bayou	10	10	10	10	10	10	10	10	10	10	10	10	10	10	10	10	10	10	10	10	10	10	10	10
Houston Pilots K - Shell Crude	10	10	10	10	10	10	10	10	10	10	10	10	10	10	10	10	10	10	10	10	10	10	10	10
Houston Pilots J - Lynchburg Ferries	10	10	10	10	10	10	10	10	10	10	10	10	10	10	10	10	10	10	10	10	10	10	10	10
Houston Pilots I - Exxon 3	10	10	10	10	10	10	10	10	10	10	10	10	10	10	10	10	10	10	10	10	10	10	10	10
Houston Pilots H - Morgans Point	10	10	10	10	10	10	10	10	10	10	10	10	10	10	10	10	10	10	10	10	10	10	10	10
Houston Pilots G - 75/76	10	10	10	10	10	10	10	10	10	10	10	10	10	10	10	10	10	10	10	10	10	10	10	10
Houston Pilots F - 63/64	10	10	10	10	10	10	10	10	10	10	10	10	10	10	10	10	10	10	10	10	10	10	10	10
Houston Pilots E - 51/52	10	10	10	10	10	10	10	10	10	10	10	10	10	10	10	10	10	10	10	10	10	10	10	10
Houston Pilots D - 37/38	10	10	10	10	10	10	10	10	10	10	10	10	10	10	10	10	10	10	10	10	10	10	10	10
Houston Pilots C - 25/26	10	10	10	10	10	10	10	10	10	10	10	10	10	10	10	10	10	10	10	10	10	10	10	10
Houston Pilots B - 11/12	10	10	10	10	10	10	10	10	10	10	10	10	10	10	10	10	10	10	10	10	10	10	10	10
Houston Pilots A - 1 & 2 Bravo	10	10	10	10	10	10	10	10	10	10	10	10	10	10	10	10	10	10	10	10	10	10	10	10

NOTE: This is automated data that may/may not agree with the official BAM thinking that’s found on the daily slides or special visibility report slides. This data should be used as a guide only

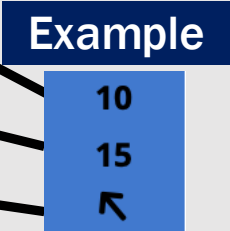
# Houston Pilots Wind Chart



Forecast Confidence



Sustained Wind 10 Knots  
Gusts 15 Knots  
Wind from the SE



Wind	Tue 4 pm	Tue 5 pm	Tue 6 pm	Tue 7 pm	Tue 8 pm	Tue 9 pm	Tue 10 pm	Tue 11 pm	Wed 12 am	Wed 1 am	Wed 2 am	Wed 3 am	Wed 4 am	Wed 5 am	Wed 6 am	Wed 7 am	Wed 8 am	Wed 9 am	Wed 10 am	Wed 11 am	Wed 12 pm	Wed 1 pm	Wed 2 pm	Wed 3 pm
Houston Pilots N - 610 Bridge	5 10 ↙	5 10 ↙	5 9 ↙	3 9 ↙	3 9 ↙	3 7 ↗	2 6 ↗	2 6 ↗	1 5 ↗	1 5 →	1 5 ↗	1 5 →	1 5 →	2 5 →	2 5 →	3 6 ↘	3 7 ↘	3 7 ↘	3 8 ↘	5 9 ↘	6 10 ↘	6 13 ↘	6 13 ↘	6 13 ↘
Houston Pilots M - Kinder 1	5 10 ↙	5 10 ↙	5 9 ↙	5 9 ↙	3 9 ↙	3 7 ↗	2 6 ↗	2 6 ↗	1 5 ↗	1 5 →	1 5 ↗	1 5 →	1 5 →	2 5 →	2 5 →	3 6 ↘	3 7 ↘	3 7 ↘	3 8 ↘	5 9 ↘	6 10 ↘	6 13 ↘	6 13 ↘	6 13 ↘
Houston Pilots L - Greens Bayou	5 10 ↙	5 9 ↙	3 9 ↙	3 8 ↙	3 8 ↙	3 7 ↗	2 6 ↗	2 5 ↗	1 5 ↗	1 3 ↗	1 3 →	1 3 →	1 5 →	2 5 →	2 5 →	2 5 ↘	3 6 ↘	3 7 ↘	3 7 ↘	5 9 ↘	6 10 ↘	6 12 ↘	6 13 ↘	6 13 ↘
Houston Pilots K - Shell Crude	5 10 ↙	5 9 ↙	5 9 ↙	3 8 ↙	3 7 ↙	2 7 ↗	2 6 ↗	2 5 ↗	1 5 ↗	1 3 ↗	1 3 →	1 3 →	1 5 →	2 5 →	2 5 →	2 5 ↘	3 6 ↘	3 7 ↘	3 7 ↘	5 9 ↘	6 10 ↘	6 12 ↘	6 13 ↘	6 12 ↘
Houston Pilots J - Lynchburg Ferries	5 10 ↙	5 9 ↙	3 8 ↙	3 8 ↙	3 7 ↙	2 6 ↗	1 6 ↗	1 5 ↗	1 3 ↗	1 3 ↗	1 3 →	1 3 →	1 5 →	1 5 →	1 5 →	2 5 ↘	3 6 ↘	3 6 ↘	3 7 ↘	3 9 ↘	5 10 ↘	6 12 ↘	6 13 ↘	6 12 ↘
Houston Pilots I - Exxon 3	7 12 ↙	7 12 ↙	6 10 ↙	6 9 ↙	6 9 ↙	6 8 ↗	5 7 ↗	5 7 ↗	3 6 ↗	3 6 ↗	3 5 ↗	3 6 →	3 6 →	5 7 →	6 7 →	6 8 ↘	6 9 ↘	6 9 ↘	6 9 ↘	6 10 ↘	6 10 ↘	7 12 ↘	7 13 ↘	7 13 ↘
Houston Pilots H - Morgans Point	7 12 ↙	6 10 ↙	6 10 ↙	6 9 ↙	6 9 ↙	6 8 ↗	5 7 ↗	5 7 ↗	3 6 ↗	3 6 ↗	3 6 →	3 6 →	3 6 →	5 7 →	5 7 →	6 8 ↘	6 9 ↘	6 9 ↘	6 9 ↘	6 10 ↘	6 10 ↘	6 12 ↘	7 13 ↘	7 13 ↘
Houston Pilots G - 75/76	6 12 ↙	6 12 ↙	6 10 ↙	6 10 ↙	6 10 ↙	6 9 ↗	6 8 ↗	6 8 ↗	6 7 ↗	5 7 ↗	5 6 ↗	5 7 →	5 7 →	6 8 →	6 8 →	6 9 ↘	7 10 ↘	7 10 ↘	7 10 ↘	7 12 ↘	6 10 ↘	6 12 ↘	6 12 ↘	6 12 ↘
Houston Pilots F - 63/64	6 12 ↙	6 10 ↙	6 10 ↙	6 9 ↙	6 10 ↙	6 9 ↗	6 8 ↗	6 8 ↗	6 7 ↗	5 7 ↗	5 7 ↗	5 7 →	5 7 →	6 8 →	6 8 →	6 9 ↘	7 10 ↘	7 10 ↘	7 10 ↘	7 12 ↘	6 10 ↘	6 10 ↘	6 12 ↘	6 10 ↘
Houston Pilots E - 51/52	6 10 ↙	6 10 ↙	6 10 ↙	6 10 ↙	6 10 ↙	6 9 ↗	6 8 ↗	6 8 ↗	6 7 ↗	5 7 ↗	5 7 ↗	5 7 →	5 7 →	6 8 →	6 8 →	6 9 ↘	7 10 ↘	7 10 ↘	7 10 ↘	7 12 ↘	6 10 ↘	6 10 ↘	6 10 ↘	6 10 ↘
Houston Pilots D - 37/38	6 10 ↙	6 10 ↙	6 10 ↙	6 10 ↙	6 10 ↙	6 9 ↗	6 8 ↗	6 8 ↗	6 7 ↗	5 7 ↗	5 7 ↗	5 7 →	5 7 →	6 8 →	6 8 →	6 9 ↘	7 10 ↘	7 10 ↘	7 10 ↘	7 12 ↘	6 10 ↘	6 10 ↘	6 10 ↘	6 10 ↘
Houston Pilots C - 25/26	6 12 ↙	6 10 ↙	6 10 ↙	6 10 ↙	6 10 ↙	6 9 ↗	6 8 ↗	6 8 ↗	6 7 ↗	5 7 ↗	5 7 ↗	5 7 →	5 7 →	6 8 →	6 8 →	6 9 ↘	7 10 ↘	7 10 ↘	7 10 ↘	7 12 ↘	6 10 ↘	6 10 ↘	6 10 ↘	6 10 ↘
Houston Pilots B - 11/12	6 12 ↙	6 12 ↙	6 10 ↙	6 10 ↙	6 10 ↙	6 9 ↗	6 9 ↗	5 8 ↗	5 8 ↗	3 8 ↗	3 7 ↗	3 7 ↗	3 7 →	3 8 →	5 8 →	6 9 ↘	6 10 ↘	6 10 ↘	6 10 ↘	7 12 ↘	6 10 ↘	6 10 ↘	6 10 ↘	6 10 ↘
Houston Pilots A - 1 & 2 Bravo	6 13 ↙	6 12 ↙	7 12 ↙	6 12 ↙	6 12 ↙	6 10 ↗	6 10 ↗	6 9 ↗	6 9 ↗	6 8 ↗	6 8 ↗	5 8 ↗	6 8 →	6 8 →	6 6 ↘	6 9 ↘	7 10 ↘	7 10 ↘	7 10 ↘	7 12 ↘	6 10 ↘	6 10 ↘	5 10 ↘	3 9 ↘

NOTE: This is automated data that may/may not agree with the official BAM thinking that's found on the daily slides.  
This data should be used as a guide only.

# Houston Pilots: TUE. 9/2/2025

## Forecast Discussion

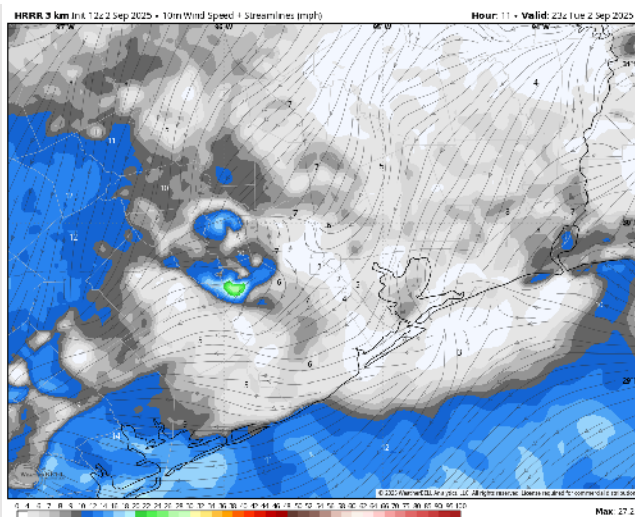
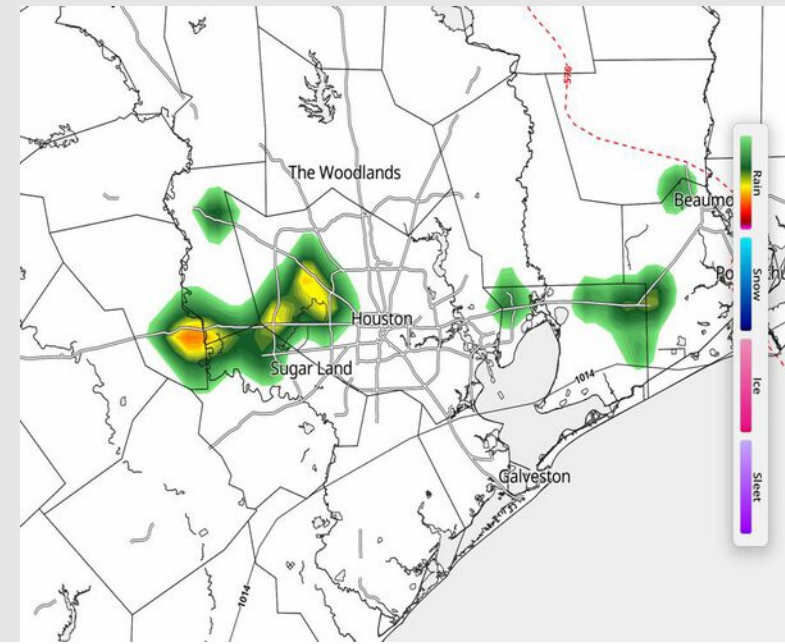
**Precip:** Hit/miss showers and storms possible through 8PM for all Stations. Highest coverage is anticipated from 4PM to 7PM. **Storms will be capable of producing lightning, heavy downpours and wind gusts of 20-25 kts.**

**Wind:** Winds will be generally out of the E/NE, becoming variable at times for the rest of the day. **N of Morgan's Point:** Winds will be at 2 – 7 kts. **S of Morgan's Point:** Winds will be at to 3 – 8 kts.

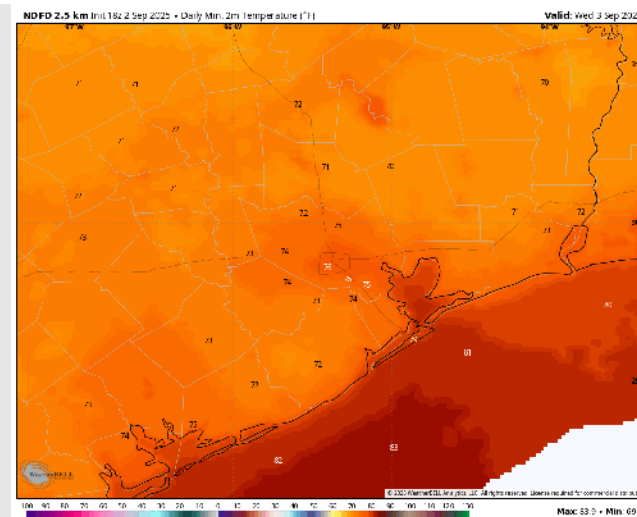
**Low Temps:** **N of Morgan's Point:** Mid 70s F. **S of Morgan's Point:** Upper 70s F.

**Visibility:** No fog concerns for today, however, visibilities can be briefly reduced under heavy downpours.

## Precip Image: 7 PM CT



Wind Speed:  
6 PM CT



Low Temps  
WED AM

# Houston Pilots: WED. 9/3/2025

## Forecast Discussion

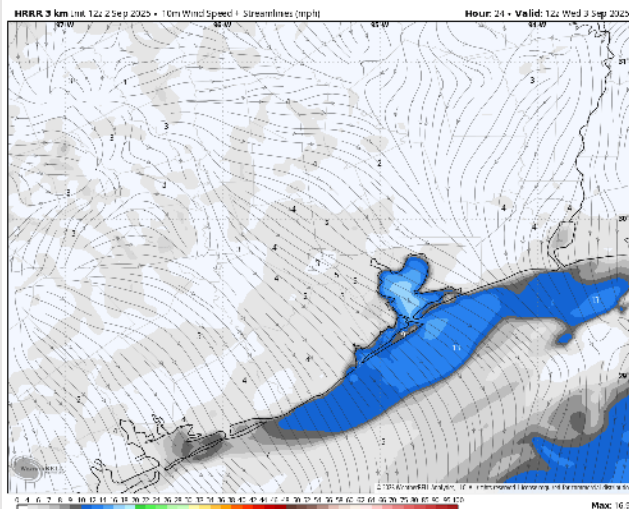
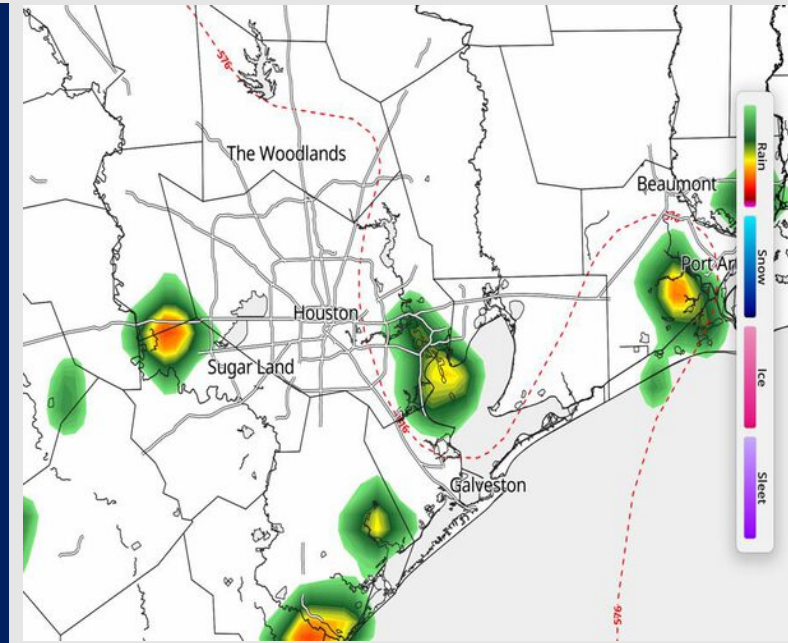
**Precip:** Isolated showers and a few storms in play for all Stations. between 3PM to 8PM. Favoring dry conditions for all Stations after then. **Lightning, heavy downpours, and brief 20 kt winds will be possible within storms.**

**Wind:** Winds will be out of the NNW throughout Wednesday. **N of Morgan's Point:** Winds will be at 2 – 7 kts. **S of Morgan's Point:** Winds will be at 4 – 9 kts, increasing briefly to 8 – 13 kts from 4AM to 2PM.

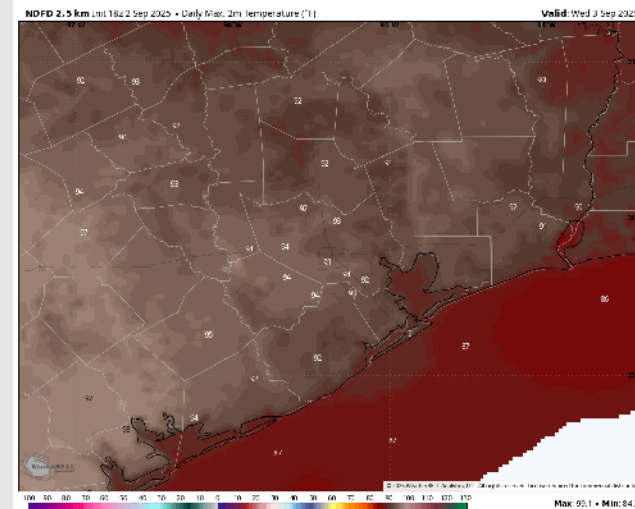
**High Temps:** **N of Morgan's Point:** Low 90s F. **S of Morgan's Point:** High 80s F / Near 90 F.

**Visibility:** No visibility concerns Wednesday.

## Precip Image: 5 PM CT



Wind Speed:  
7 AM CT



High Temps  
Wednesday

# Houston Pilots: THU. 9/4/2025

## Forecast Discussion

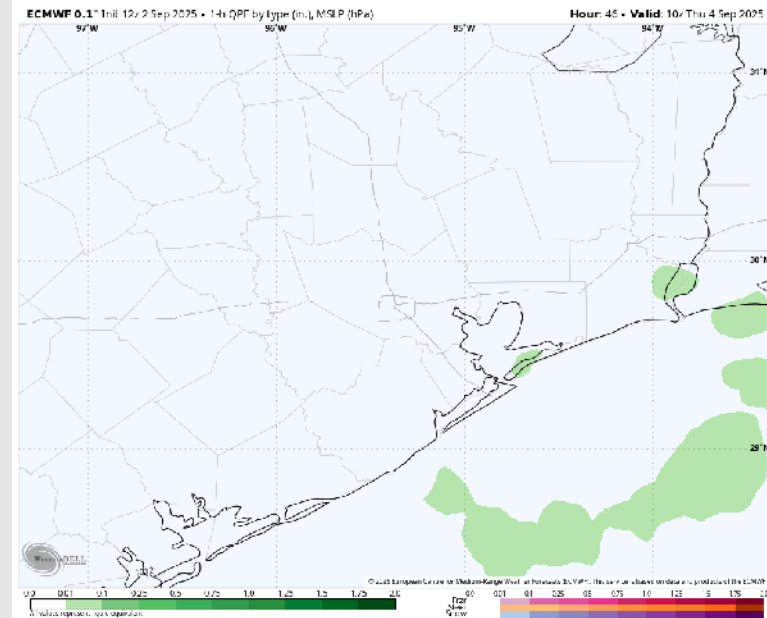
**Precip:** Isolated showers in play for Stations S of 51/52 between 12-6 AM.

**Wind:** Winds will be generally out of the W/SW throughout the day. **N of Morgan's Point:** Winds will be at 2 – 7 kts. **S of Morgan's Point:** Winds will be at 4 – 9 kts.

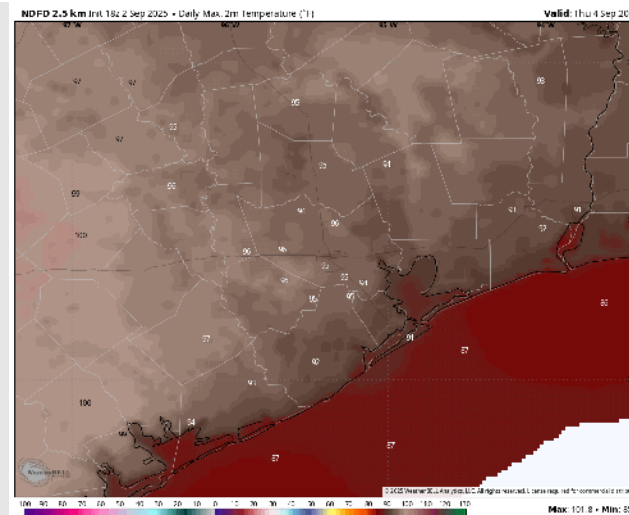
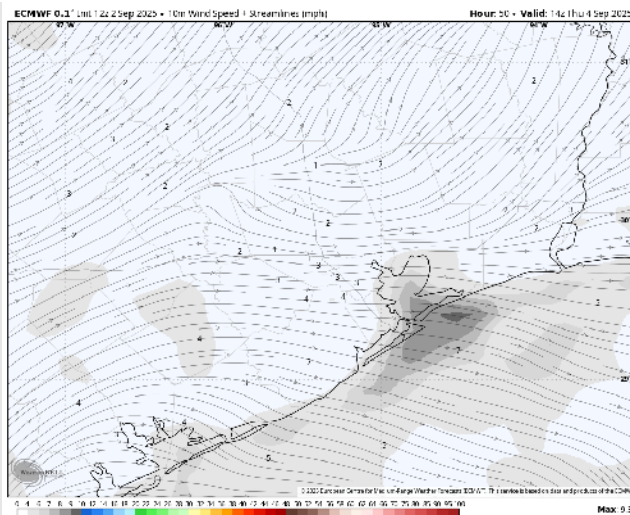
**High Temps:** **N of Morgan's Point:** Mid 90s F. **S of Morgan's Point:** Low 90s F.

**Visibility:** No visibility concerns for Thursday.

## Precip Image: 5 AM CT



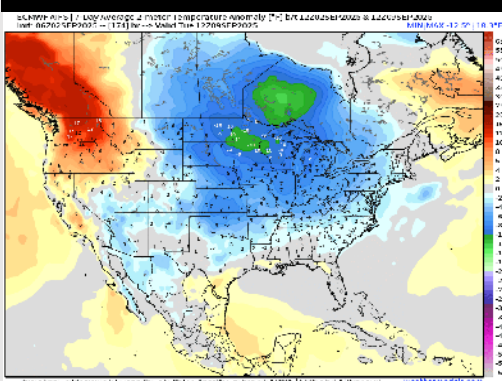
Wind Speed:  
9 AM CT



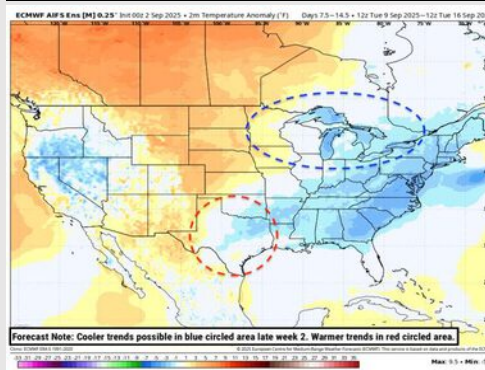
High Temps  
Thursday

# Houston Pilots: 9/2/25

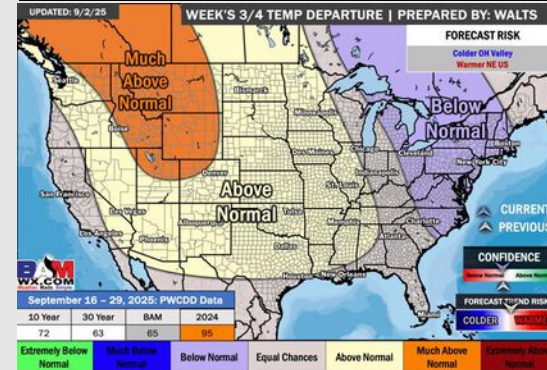
## Next 7 Day Temperature Departure



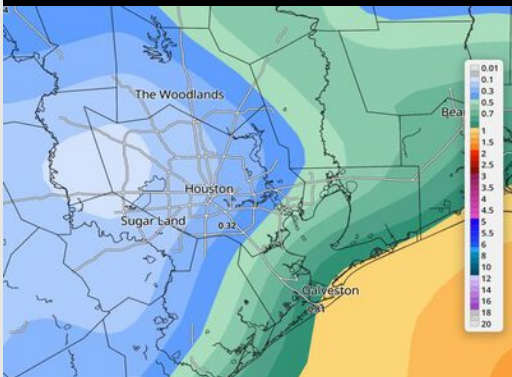
## 8-14 Day Temperature Departure



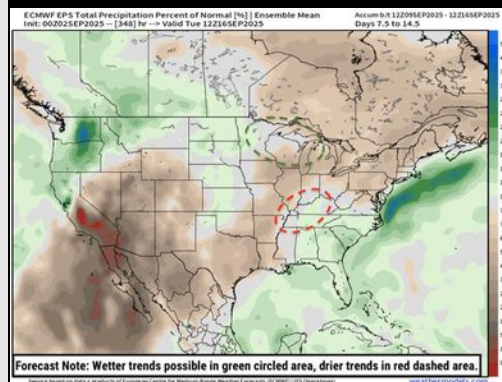
## 15-30 Day Temperature Departure



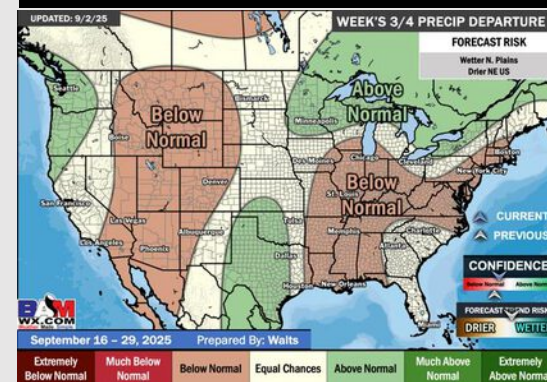
## Next 7 Day Total Precipitation



## 8-14 Day % of Average Precip.



## 15-30 Day % of Average Precip.



- Temps are expected to be near normal for the next 7 days with scattered rain chances bringing a few downpours through the start of the week.
- Near normal temperatures and below normal rain chances are favored for days 8 – 14.
- Near normal temperatures are favored for mid to late September with near normal rainfall chances.