

Houston Pilots Forecast Package



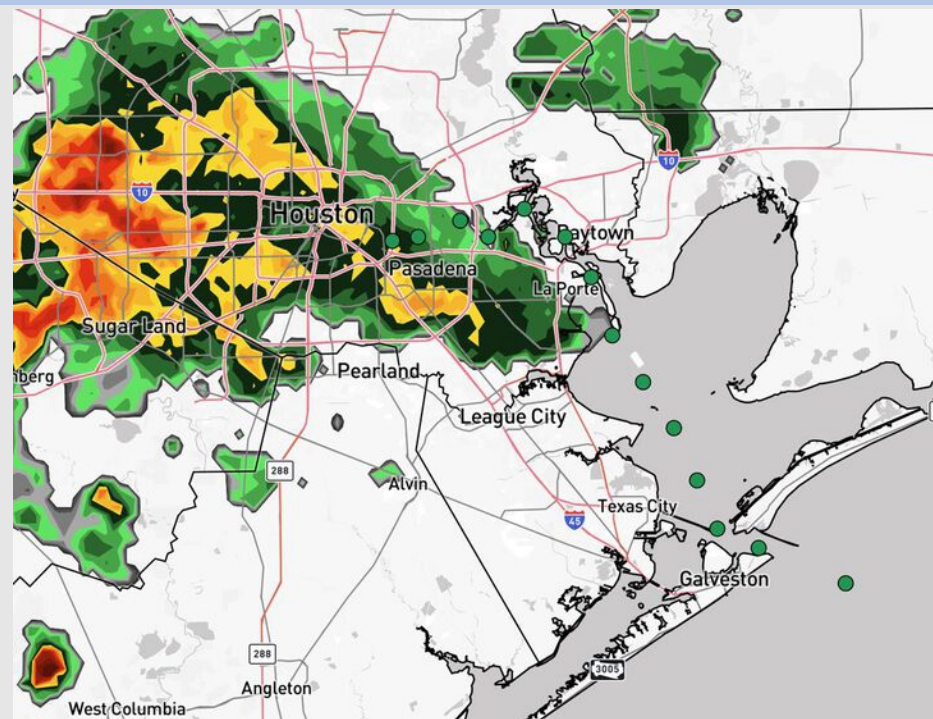
Updated: 1:10 PM CT

Sunday, September 7, 2025

Forecaster: Hope Kleitsch

Weather Headlines

- Scattered showers and storms will be possible throughout the rest of the day
- Dry conditions set in on Monday, however breezy conditions will be in play at times on Monday and Tuesday.
- No tropical activity is favored across the next 7-10 days.



Current Radar: 1:10 PM CT

As always, please do not hesitate to reach out to us with any forecast questions at **(317)-560-8122**. Press **1** for forecast questions.

You can also access real-time forecast updates and 24/7 meteorological chat assistance on your **Clarity** app. Click [here](#) for login assistance.



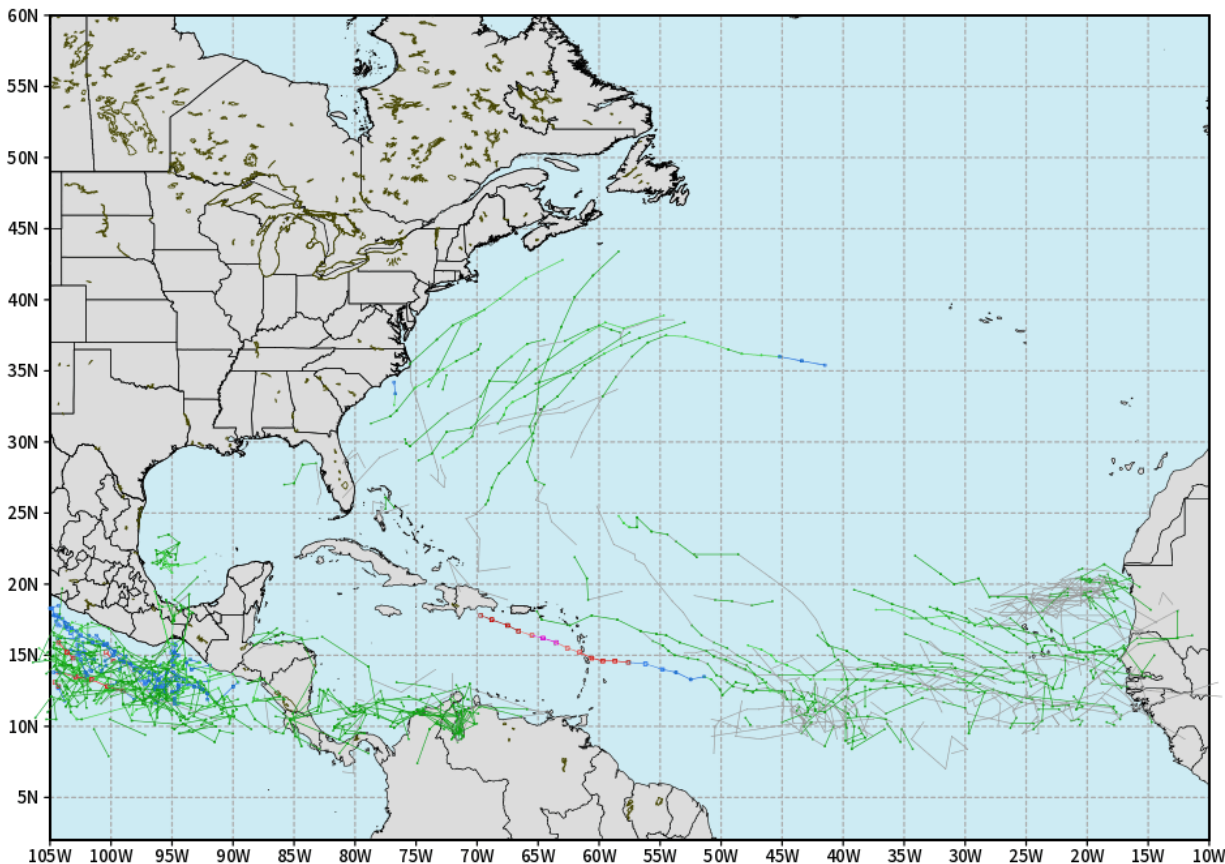
Houston Pilots Tropical Update

10-Day Tropical Outlook

ECMWF ATLANTIC EPS Cyclone Locations --> Next [10-days]
INIT: 00Z07SEP2025 --> UNTIL 00Z17SEP2025

o-o ENSEMBLE MEAN
o-o 1000 - 1010 hPa
o-o 980 - 999 hPa

o-o 960 - 979 hPa
o-o 950 - 959 hPa
o-o < 950 hPa



weathermodels.com

No tropical development favored in the Gulf over the next 7-10 days.

We'll need to watch for an uptick in activity from the 15th to the 30th.

Houston Pilots Visibility Chart (miles)



Visibility	Sun 3 pm	Sun 4 pm	Sun 5 pm	Sun 6 pm	Sun 7 pm	Sun 8 pm	Sun 9 pm	Sun 10 pm	Sun 11 pm	Mon 12 am	Mon 1 am	Mon 2 am	Mon 3 am	Mon 4 am	Mon 5 am	Mon 6 am	Mon 7 am	Mon 8 am	Mon 9 am	Mon 10 am	Mon 11 am	Mon 12 pm	Mon 1 pm	Mon 2 pm
Houston Pilots N - 610 Bridge	10	10	10	10	10	10	10	10	10	10	10	10	10	10	10	10	10	10	10	10	10	10	10	10
Houston Pilots M - Kinder 1	10	10	10	10	10	10	10	10	10	10	10	10	10	10	10	10	10	10	10	10	10	10	10	10
Houston Pilots L - Greens Bayou	10	10	10	10	10	10	10	10	10	10	10	10	10	10	10	10	10	10	10	10	10	10	10	10
Houston Pilots K - Shell Crude	10	10	10	10	10	10	10	10	10	10	10	10	10	10	10	10	10	10	10	10	10	10	10	10
Houston Pilots J - Lynchburg Ferries	10	10	10	10	10	10	10	10	10	10	10	10	10	10	10	10	10	10	10	10	10	10	10	10
Houston Pilots I - Exxon 3	10	10	10	10	10	10	10	10	10	10	10	10	10	10	10	10	10	10	10	10	10	10	10	10
Houston Pilots H - Morgans Point	10	10	10	10	10	10	10	10	10	10	10	10	10	10	10	10	10	10	10	10	10	10	10	10
Houston Pilots G - 75/76	10	10	9	9	10	10	9	10	9	10	10	10	10	10	10	10	10	10	9	9	9	10	10	10
Houston Pilots F - 63/64	10	10	7.9	9	10	9	7.9	10	9	10	10	10	10	10	10	10	10	10	7.9	7.9	9	9	10	10
Houston Pilots E - 51/52	7.9	7.9	7.9	7.9	7.9	7.9	6.9	9	7.9	9	9	9	9	10	9	10	10	9	6.9	6.9	7.9	7.9	10	10
Houston Pilots D - 37/38	7.9	7.9	7.9	7.9	7.9	7.9	6.9	9	7.9	7.9	7.9	9	9	9	9	9	10	9	6.9	6.9	7.9	7.9	10	10
Houston Pilots C - 25/26	7.9	7.9	6.9	6.9	7.9	7.9	6.9	7.9	6.9	7.9	7.9	9	9	9	9	9	9	7.9	6.9	6.9	6.9	6.9	10	10
Houston Pilots B - 11/12	6.9	7.9	6.9	6.9	7.9	7.9	6.9	7.9	6.9	6.9	7.9	7.9	7.9	9	7.9	9	9	7.9	6.9	6.9	6.9	6.9	10	10
Houston Pilots A - 1 & 2 Bravo	7.9	7.9	7.9	7.9	7.9	7.9	6.9	7.9	6.9	6.9	7.9	7.9	7.9	9	9	9	9	9	6.9	6.9	7.9	7.9	10	10

NOTE: This is automated data that may/may not agree with the official BAM thinking that's found on the daily slides or special visibility report slides. This data should be used as a guide only

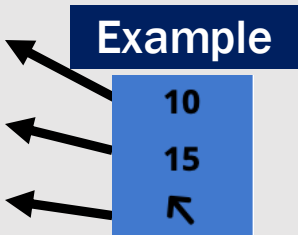
Houston Pilots Wind Chart



Forecast Confidence



Sustained Wind 10 Knots
Gusts 15 Knots
Wind from the SE



Wind	Sun 3 pm	Sun 4 pm	Sun 5 pm	Sun 6 pm	Sun 7 pm	Sun 8 pm	Sun 9 pm	Sun 10 pm	Sun 11 pm	Mon 12 am	Mon 1 am	Mon 2 am	Mon 3 am	Mon 4 am	Mon 5 am	Mon 6 am	Mon 7 am	Mon 8 am	Mon 9 am	Mon 10 am	Mon 11 am	Mon 12 pm	Mon 1 pm	Mon 2 pm
Houston Pilots N - 610 Bridge	7 15 ↙	7 14 ↙	6 13 ↙	6 13 ↙	6 13 ↙	6 12 ↙	6 12 ↙	6 10 ↙	6 10 ↙	6 12 ↙	6 13 ↙	7 14 ↙	7 15 ↙	8 15 ↙	8 15 ↙	8 15 ↙	8 16 ↙	8 16 ↙	9 17 ↙	9 18 ↙	9 18 ↙	9 20 ↙	8 18 ↙	8 17 ↙
Houston Pilots M - Kinder 1	7 15 ↙	7 14 ↙	6 13 ↙	6 13 ↙	6 13 ↙	6 12 ↙	6 12 ↙	6 10 ↙	6 10 ↙	6 12 ↙	6 13 ↙	7 15 ↙	7 15 ↙	8 15 ↙	8 15 ↙	8 15 ↙	8 16 ↙	8 16 ↙	9 17 ↙	9 18 ↙	9 18 ↙	9 20 ↙	8 18 ↙	8 17 ↙
Houston Pilots L - Greens Bayou	7 15 ↙	7 14 ↙	6 13 ↙	6 13 ↙	6 13 ↙	6 12 ↙	6 12 ↙	6 10 ↙	6 10 ↙	6 13 ↙	6 14 ↙	7 15 ↙	7 15 ↙	7 15 ↙	8 15 ↙	8 15 ↙	8 16 ↙	8 16 ↙	9 17 ↙	9 18 ↙	9 18 ↙	9 18 ↙	8 18 ↙	8 17 ↙
Houston Pilots K - Shell Crude	8 15 ↙	7 14 ↙	7 13 ↙	6 12 ↙	6 13 ↙	6 10 ↙	6 12 ↙	6 10 ↙	6 12 ↙	6 13 ↙	6 14 ↙	7 15 ↙	7 15 ↙	7 15 ↙	8 16 ↙	8 16 ↙	8 16 ↙	8 17 ↙	9 18 ↙	9 18 ↙	9 18 ↙	9 18 ↙	9 18 ↙	8 17 ↙
Houston Pilots J - Lynchburg Ferries	8 15 ↙	7 14 ↙	6 13 ↙	6 12 ↙	6 13 ↙	6 10 ↙	5 10 ↙	5 10 ↙	5 10 ↙	6 13 ↙	6 14 ↙	6 15 ↙	6 15 ↙	6 15 ↙	7 15 ↙	7 15 ↙	8 16 ↙	8 16 ↙	8 17 ↙	9 18 ↙	9 17 ↙	9 18 ↙	9 17 ↙	8 16 ↙
Houston Pilots I - Exxon 3	10 16 ↙	9 16 ↙	9 15 ↙	8 14 ↙	8 13 ↙	8 13 ↙	8 13 ↙	9 13 ↙	10 15 ↙	10 16 ↙	13 17 ↙	13 18 ↙	14 20 ↙	14 20 ↙	14 21 ↙	15 21 ↙	15 21 ↙	14 21 ↙	14 20 ↙	13 20 ↙	13 18 ↙	13 20 ↙	10 18 ↙	10 18 ↙
Houston Pilots H - Morgans Point	10 16 ↙	9 16 ↙	9 15 ↙	8 14 ↙	8 13 ↙	8 13 ↙	8 13 ↙	9 14 ↙	10 15 ↙	12 16 ↙	13 17 ↙	14 20 ↙	14 20 ↙	15 21 ↙	15 21 ↙	15 22 ↙	15 22 ↙	15 21 ↙	14 20 ↙	14 20 ↙	13 20 ↙	13 20 ↙	12 18 ↙	10 18 ↙
Houston Pilots G - 75/76	10 16 ↙	9 16 ↙	9 15 ↙	8 15 ↙	9 13 ↙	9 14 ↙	9 14 ↙	10 15 ↙	12 16 ↙	13 17 ↙	14 20 ↙	15 22 ↙	15 23 ↙	16 23 ↙	16 24 ↙	17 24 ↙	17 24 ↙	16 24 ↙	16 24 ↙	15 23 ↙	14 22 ↙	13 21 ↙	12 20 ↙	10 18 ↙
Houston Pilots F - 63/64	10 16 ↙	9 16 ↙	9 15 ↙	8 15 ↙	8 13 ↙	8 14 ↙	9 15 ↙	10 15 ↙	12 17 ↙	13 17 ↙	14 20 ↙	15 22 ↙	15 23 ↙	16 23 ↙	16 23 ↙	17 24 ↙	17 24 ↙	17 24 ↙	16 24 ↙	15 23 ↙	15 22 ↙	13 21 ↙	12 20 ↙	10 18 ↙
Houston Pilots E - 51/52	10 17 ↙	9 16 ↙	8 15 ↙	8 15 ↙	9 14 ↙	9 14 ↙	10 15 ↙	10 15 ↙	12 17 ↙	13 18 ↙	14 20 ↙	15 22 ↙	15 23 ↙	16 23 ↙	16 24 ↙	17 24 ↙	17 24 ↙	17 24 ↙	17 24 ↙	16 23 ↙	15 23 ↙	14 21 ↙	13 20 ↙	12 20 ↙
Houston Pilots D - 37/38	10 17 ↙	9 16 ↙	9 15 ↙	9 15 ↙	9 14 ↙	9 14 ↙	10 15 ↙	10 16 ↙	12 17 ↙	13 18 ↙	14 20 ↙	15 22 ↙	15 23 ↙	16 23 ↙	16 24 ↙	17 24 ↙	17 25 ↙	17 24 ↙	17 24 ↙	17 24 ↙	15 23 ↙	15 22 ↙	13 20 ↙	13 20 ↙
Houston Pilots C - 25/26	10 17 ↙	9 16 ↙	9 15 ↙	9 15 ↙	9 14 ↙	9 15 ↙	10 15 ↙	10 16 ↙	12 17 ↙	13 17 ↙	13 20 ↙	14 21 ↙	15 21 ↙	15 22 ↙	15 22 ↙	16 24 ↙	17 24 ↙	17 24 ↙	17 24 ↙	16 24 ↙	15 23 ↙	15 22 ↙	14 21 ↙	13 21 ↙
Houston Pilots B - 11/12	10 17 ↙	9 17 ↙	9 16 ↙	9 16 ↙	9 15 ↙	8 15 ↙	8 15 ↙	9 16 ↙	10 17 ↙	10 17 ↙	10 18 ↙	12 20 ↙	13 21 ↙	13 21 ↙	13 22 ↙	13 22 ↙	14 23 ↙	14 23 ↙	15 23 ↙	15 23 ↙	14 22 ↙	14 21 ↙	13 21 ↙	13 21 ↙
Houston Pilots A - 1 & 2 Bravo	12 18 ↙	10 18 ↙	10 17 ↙	10 17 ↙	10 16 ↙	10 16 ↙	10 16 ↙	12 18 ↙	13 18 ↙	14 20 ↙	15 21 ↙	15 23 ↙	16 23 ↙	17 24 ↙	17 24 ↙	17 25 ↙	18 25 ↙	17 25 ↙	17 25 ↙	17 25 ↙	17 25 ↙	16 23 ↙	15 23 ↙	15 22 ↙

NOTE: This is automated data that may/may not agree with the official BAM thinking that's found on the daily slides.
This data should be used as a guide only.

Houston Pilots: SUN. 9/7/2025

Forecast Discussion

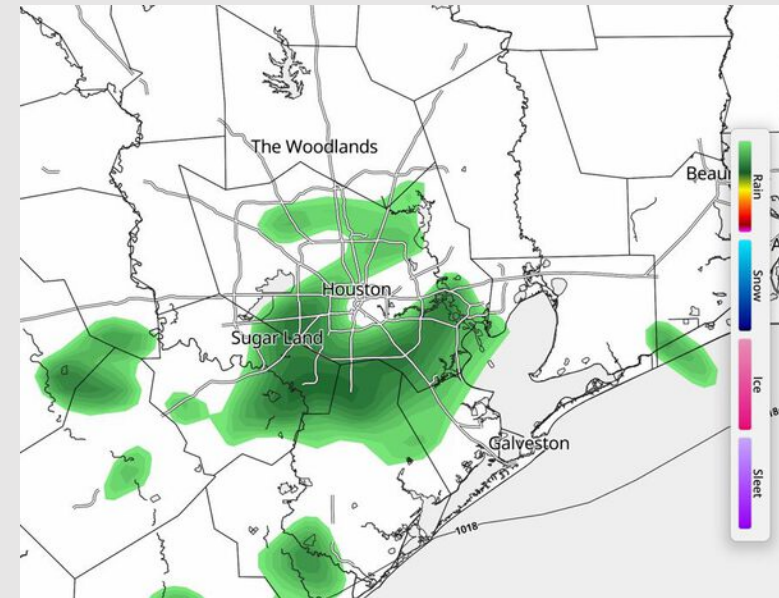
Precip: Scattered showers and storms will be possible through 11PM today. Lightning, heavy downpours and wind gusts of 20+ kts are possible with storms.

Wind: Winds will be out of the E/NE for the rest of the day. **N of Morgan's Point:** Winds will be at 3 – 8 kts. **S of Morgan's Point:** Winds will be at 5 – 10 kts.

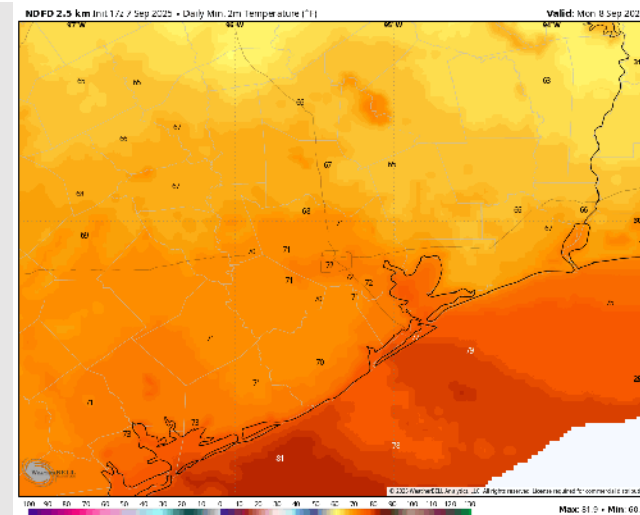
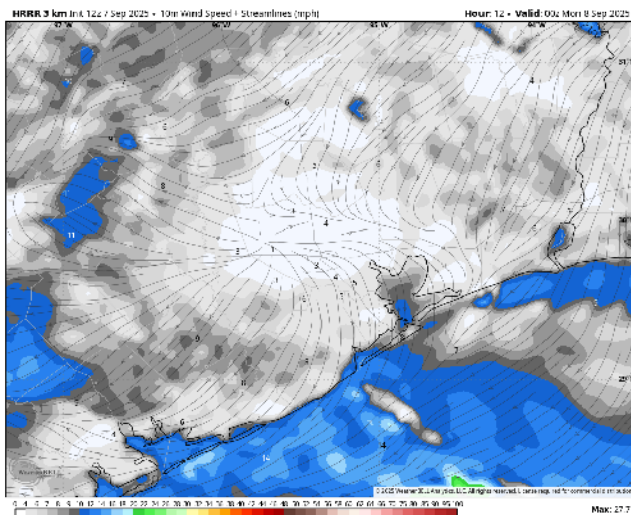
Low Temps: **N of Morgan's Point:** Low 70s F. **S of Morgan's Point:** Mid 70s F.

Visibility: No fog concerns today, however, visibilities can be reduced under heavy downpours.

Precip Image: 10 PM CT



Wind Speed:
7 PM CT



Low Temps
MON AM

Houston Pilots: MON. 9/8/2025

Forecast Discussion

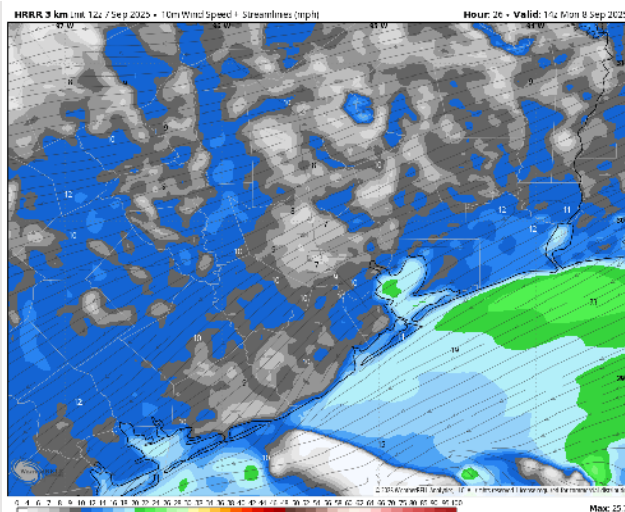
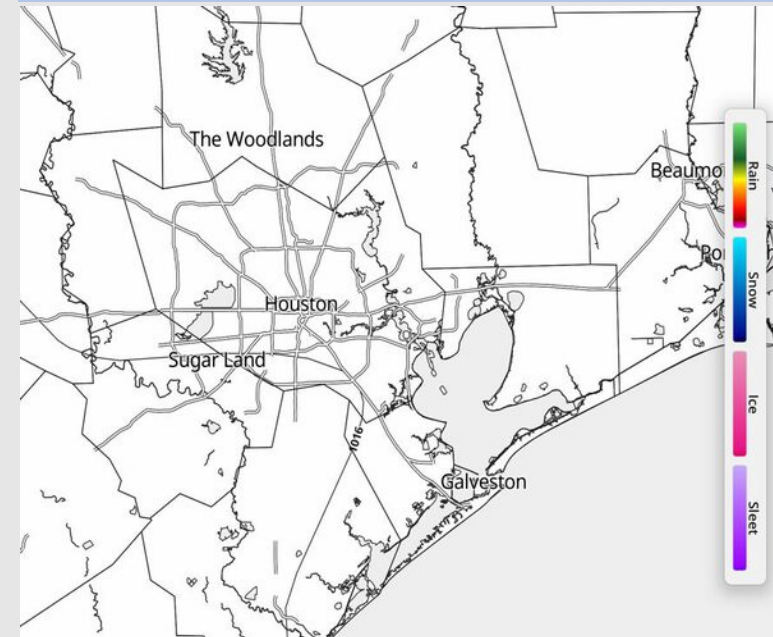
Precip: Isolated showers cannot be ruled out at the Boarding Stations between 12-3 AM. Otherwise, dry conditions favored for all Stations on Monday.

Wind: Winds will be generally out of the E Monday. **N of Morgan's Point:** Winds will be at 3 – 8 kts. **S of Morgan's Point:** Winds will be at to 13 – 18 kts through 1 PM before decreasing slightly to 10-15 kts. **Wind gusts of 20-25 kts possible for all Stations through 1PM.**

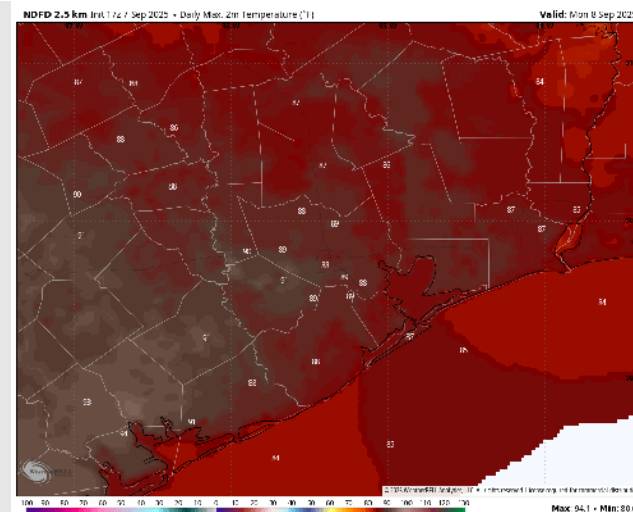
High Temps: **N of Morgan's Point:** High 80s F. **S of Morgan's Point:** High 80s F.

Visibility: No visibility concerns Monday.

Precip Image: 9 AM CT



Wind Speed:
9 AM CT



High Temps
Monday

Houston Pilots: TUE. 9/9/2025

Forecast Discussion

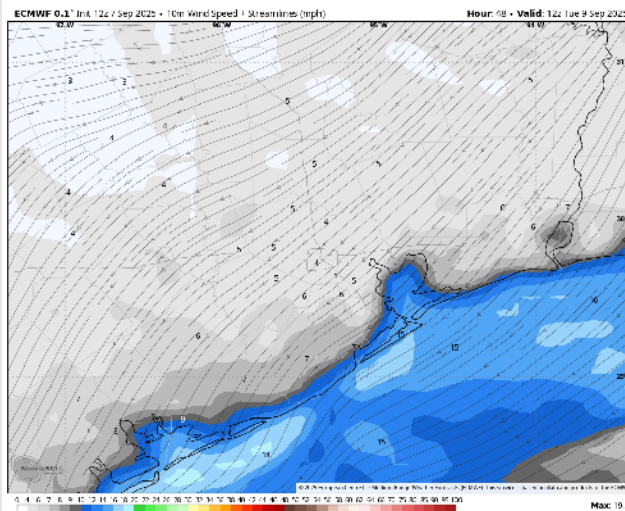
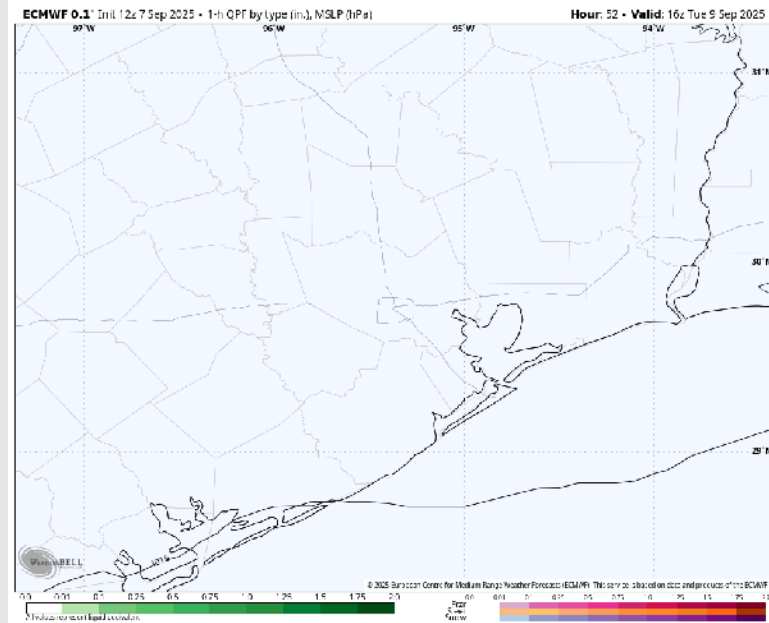
Precip: Favoring dry conditions for Tuesday.

Wind: Winds will be out of the E/NE. **N of Morgan's Point:** Winds will be at 2 – 7 kts. **S of Morgan's Point:** Winds will be at 10 – 15 kts through 2 PM before decreasing to 4 – 9 kts. **Wind gusts of 20 kts possible S of Morgan's Point through 11 AM.**

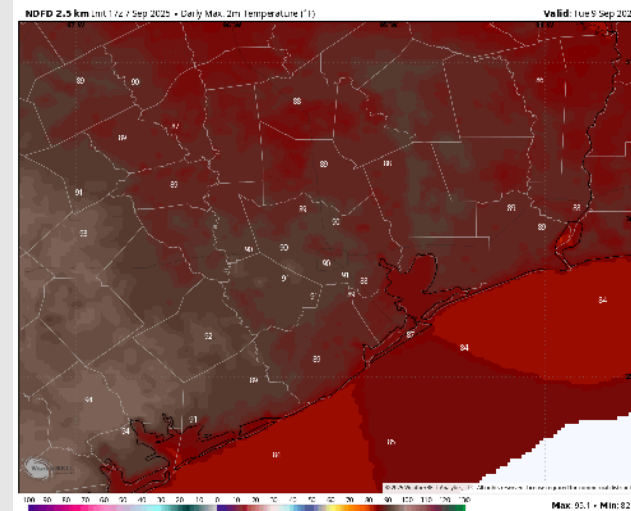
High Temps: **N of Morgan's Point:** Near 90 F. **S of Morgan's Point:** High 80s F.

Visibility: No visibility concerns Tuesday.

Precip Image: 11 AM CT



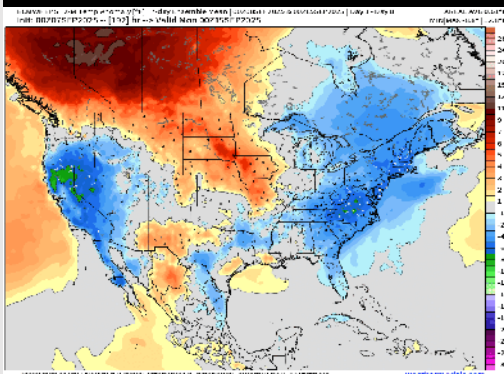
Wind Speed:
7 AM CT



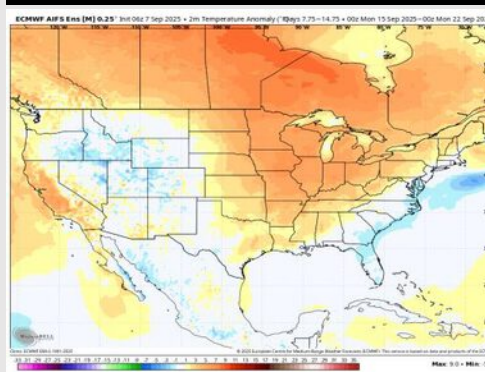
High Temps
Tuesday

Houston Pilots: 9/7/25

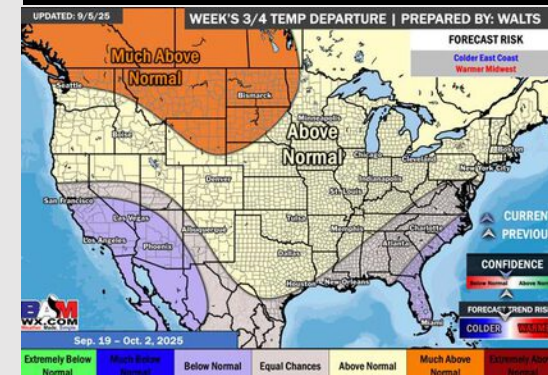
Next 7 Day Temperature Departure



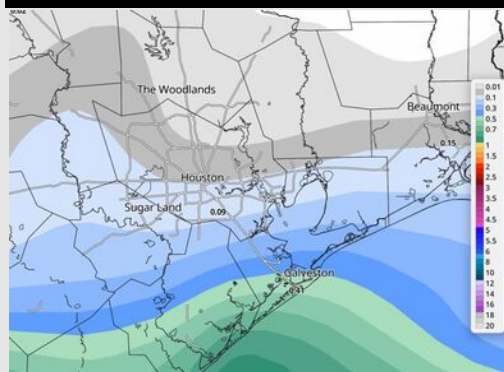
8-14 Day Temperature Departure



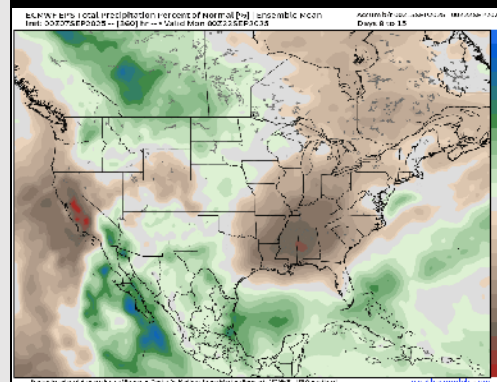
15-30 Day Temperature Departure



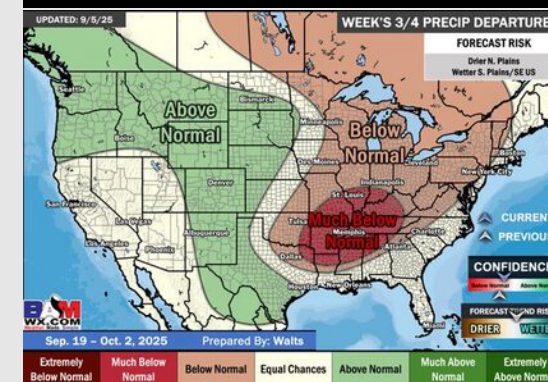
Next 7 Day Total Precipitation



8-14 Day % of Average Precip.



15-30 Day % of Average Precip.



- Temps are expected to be near normal for the next 7 days with drier conditions to start the week with rain chances entering late week.
- Above normal temperatures and below normal rain chances are favored for days 8 – 14.
- Above normal temperatures are favored for mid to late September with near normal rainfall chances.