

# Houston Pilots Forecast Package



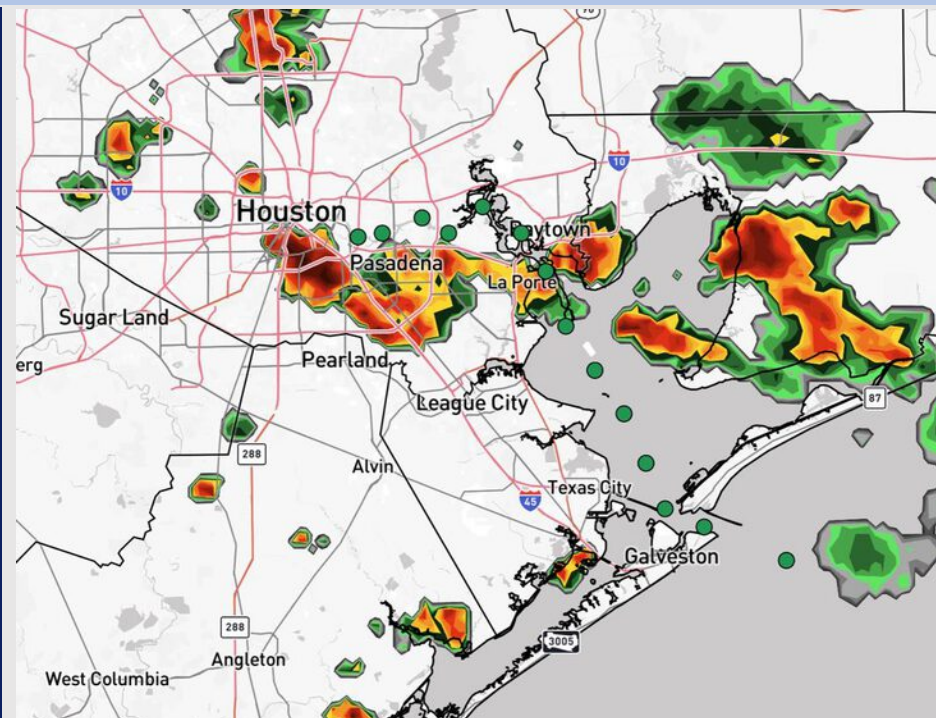
Updated: 12:40 PM CT

Monday, September 1, 2025

Forecaster: Hope Kleitsch

## Weather Headlines

- Scattered showers and storms possible at times over the next 36 hours.
- **Risks for lightning, heavy downpours and 20-25+ kts wind gusts possible with any storms.**
- No tropical activity is favored across the next 7-10 days.



**Current Radar: 12:40 PM CT**

As always, please do not hesitate to reach out to us with any forecast questions at **(317)-560-8122**. **Press 1 for forecast questions.**

You can also access real-time forecast updates and 24/7 meteorological chat assistance on your **Clarity** app. Click [here](#) for login assistance.

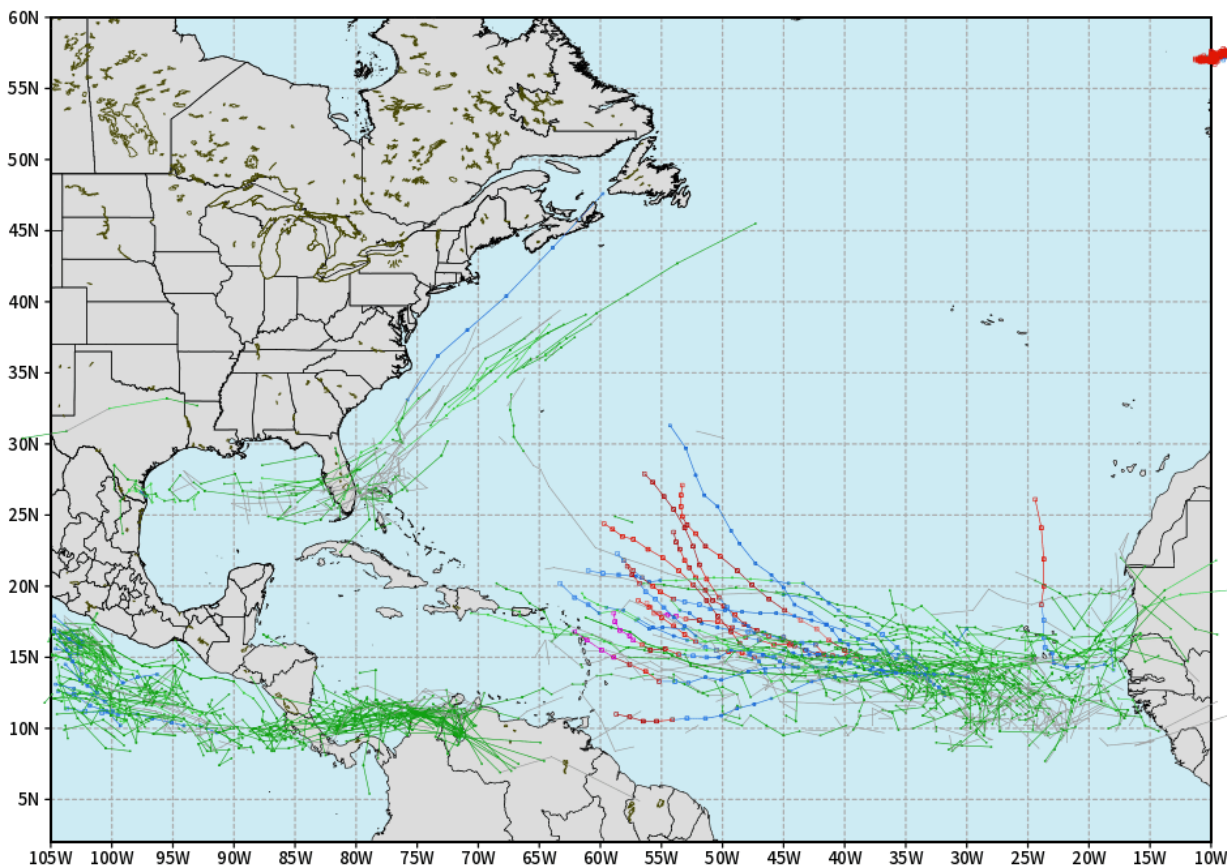


# Houston Pilots Tropical Update

## 10-Day Tropical Outlook

ECMWF ATLANTIC EPS Cyclone Locations --> Next [10-days]  
INIT: 00Z01SEP2025 --> UNTIL 00Z11SEP2025

o-o ENSEMBLE MEAN  
o-o 1000 - 1010 hPa  
o-o 980 - 999 hPa  
o-o 960 - 979 hPa  
o-o 950 - 959 hPa  
o-o < 950 hPa



[weathermodels.com](http://weathermodels.com)

No tropical development favored in the Gulf over the next 7-10 days.

Monitoring an area of potential development in the Atlantic. Current thinking is that this will recurve out to the Atlantic.

# Houston Pilots Visibility Chart (miles)



Forecast Confidence

Above Normal

Below Normal

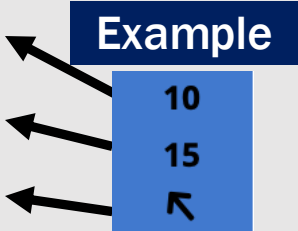
Visibility	Mon 2 pm	Mon 3 pm	Mon 4 pm	Mon 5 pm	Mon 6 pm	Mon 7 pm	Mon 8 pm	Mon 9 pm	Mon 10 pm	Mon 11 pm	Tue 12 am	Tue 1 am	Tue 2 am	Tue 3 am	Tue 4 am	Tue 5 am	Tue 6 am	Tue 7 am	Tue 8 am	Tue 9 am	Tue 10 am	Tue 11 am	Tue 12 pm	Tue 1 pm
Houston Pilots N - 610 Bridge	6.9	9	9	10	10	10	10	10	10	10	10	9	9	9	7.9	6.9	6.9	5.9	4.9	4.9	6.9	9	10	10
Houston Pilots M - Kinder 1	6.9	7.9	7.9	9	10	10	10	10	10	9	9	9	7.9	7.9	7.9	6.9	6.9	5.9	4.9	4.9	6.9	7.9	9	9
Houston Pilots L - Greens Bayou	5.9	6.9	7.9	7.9	9	10	9	9	10	9	9	9	7.9	7.9	7.9	6.9	6.9	5.9	4.9	4.9	6.9	6.9	9	7.9
Houston Pilots K - Shell Crude	5.9	6.9	7.9	7.9	7.9	9	7.9	7.9	9	9	7.9	7.9	7.9	7.9	6.9	6.9	6.9	5.9	4.9	4.9	5.9	6.9	7.9	7.9
Houston Pilots J - Lynchburg Ferries	5.9	6.9	7.9	7.9	9	9	9	9	10	9	9	9	7.9	7.9	7.9	6.9	6.9	5.9	4.9	4.9	6.9	7.9	9	7.9
Houston Pilots I - Exxon 3	5.9	6.9	7.9	7.9	7.9	7.9	7.9	7.9	9	9	7.9	7.9	7.9	7.9	6.9	6.9	6.9	5.9	4.9	4.9	5.9	6.9	7.9	7.9
Houston Pilots H - Morgans Point	4.9	6.9	6.9	7.9	6.9	7.9	7.9	7.9	9	9	7.9	7.9	7.9	7.9	7.9	6.9	6.9	5.9	4.9	4.9	5.9	6.9	6.9	6.9
Houston Pilots G - 75/76	4.9	5.9	6.9	6.9	6.9	7.9	6.9	6.9	9	9	7.9	7.9	7.9	7.9	7.9	6.9	6.9	6.9	5.9	4.9	5.9	6.9	10	10
Houston Pilots F - 63/64	4.9	5.9	6.9	6.9	6.9	6.9	6.9	6.9	9	9	7.9	7.9	7.9	7.9	7.9	6.9	6.9	6.9	5.9	4.9	5.9	6.9	10	10
Houston Pilots E - 51/52	4.9	4.9	6.9	6.9	6.9	6.9	6.9	6.9	9	7.9	7.9	7.9	7.9	7.9	7.9	6.9	6.9	6.9	6.9	4.9	5.9	6.9	10	10
Houston Pilots D - 37/38	4.9	4.9	6.9	6.9	6.9	6.9	6.9	6.9	7.9	7.9	7.9	7.9	7.9	7.9	7.9	6.9	6.9	6.9	6.9	4.9	5.9	6.9	10	10
Houston Pilots C - 25/26	4.9	4.9	4.9	6.9	6.9	6.9	6.9	6.9	7.9	7.9	6.9	6.9	7.9	6.9	6.9	6.9	6.9	6.9	6.9	4.9	5.9	5.9	10	10
Houston Pilots B - 11/12	4.9	4.9	4.9	6.9	6.9	6.9	6.9	6.9	7.9	7.9	6.9	7.9	7.9	7.9	6.9	6.9	6.9	6.9	6.9	4.9	5.9	6.9	10	10
Houston Pilots A - 1 & 2 Bravo	6.9	4.9	6.9	6.9	7.9	7.9	7.9	7.9	9	7.9	7.9	7.9	7.9	7.9	7.9	6.9	7.9	7.9	7.9	5.9	5.9	6.9	10	10

NOTE: This is automated data that may/may not agree with the official BAM thinking that's found on the daily slides or special visibility report slides. This data should be used as a guide only

# Houston Pilots Wind Chart



Sustained Wind 10 Knots  
Gusts 15 Knots  
Wind from the SE



Wind	Mon 2 pm	Mon 3 pm	Mon 4 pm	Mon 5 pm	Mon 6 pm	Mon 7 pm	Mon 8 pm	Mon 9 pm	Mon 10 pm	Mon 11 pm	Tue 12 am	Tue 1 am	Tue 2 am	Tue 3 am	Tue 4 am	Tue 5 am	Tue 6 am	Tue 7 am	Tue 8 am	Tue 9 am	Tue 10 am	Tue 11 am	Tue 12 pm	Tue 1 pm
Houston Pilots N - 610 Bridge	5 10 ←	5 9 ←	5 10 ←	5 9 ←	5 9 ←	5 9 ←	5 9 ←	3 8 ←	3 7 ←	2 7 ←	2 6 ↓	1 5 ↓	1 5 ↓	1 5 ↓	2 6 ↓	2 6 ↓	3 7 ↓	3 7 ↓	3 8 ↓	3 7 ↓	3 8 ↓	5 9 ↓	6 10 ↓	6 12 ↓
Houston Pilots M - Kinder 1	5 10 ←	5 9 ←	5 10 ←	5 9 ←	5 9 ←	5 9 ←	5 9 ←	3 8 ←	3 7 ←	2 7 ←	2 6 ↓	1 5 ↓	1 5 ↓	1 5 ↓	2 5 ↓	2 6 ↓	3 7 ↓	3 7 ↓	3 8 ↓	3 7 ↓	3 8 ↓	5 9 ↓	6 10 ↓	6 12 ↓
Houston Pilots L - Greens Bayou	5 10 ←	5 9 ←	5 10 ←	5 9 ←	5 9 ←	5 9 ←	5 9 ←	3 7 ←	3 7 ←	2 6 ↓	2 5 ↓	1 5 ↓	1 5 ↓	1 5 ↓	2 5 ↓	2 6 ↓	3 6 ↓	3 7 ↓	3 8 ↓	3 7 ↓	3 8 ↓	5 9 ↓	5 10 ↓	6 10 ↓
Houston Pilots K - Shell Crude	6 10 ←	6 9 ←	6 10 ←	6 10 ←	5 9 ←	5 9 ←	5 9 ←	3 7 ←	3 7 ←	2 6 ↓	2 5 ↓	1 5 ↓	1 5 ↓	1 5 ↓	2 5 ↓	2 6 ↓	3 6 ↓	3 7 ↓	3 8 ↓	3 7 ↓	3 8 ↓	5 9 ↓	6 10 ↓	6 10 ↓
Houston Pilots J - Lynchburg Ferries	6 10 ←	6 9 ←	5 10 ←	5 9 ←	5 9 ←	5 8 ←	3 9 ←	3 7 ←	2 7 ←	2 6 ↓	1 5 ↓	1 5 ↓	1 3 ↓	1 5 ↓	1 5 ↓	2 6 ↓	2 6 ↓	3 7 ↓	3 7 ↓	3 7 ↓	3 8 ↓	3 9 ↓	5 10 ↓	5 10 ↓
Houston Pilots I - Exxon 3	7 13 ←	8 12 ←	8 13 ←	8 12 ←	7 10 ←	7 10 ←	7 10 ←	6 9 ←	6 8 ←	6 8 ←	5 7 ←	5 7 ←	5 7 ←	5 7 ←	6 7 ←	6 8 ←	6 8 ←	7 9 ←	7 10 ←	7 9 ←	7 10 ←	7 12 ←	7 12 ←	7 12 ←
Houston Pilots H - Morgans Point	8 13 ←	8 12 ←	8 13 ←	8 12 ←	7 10 ←	7 10 ←	7 10 ←	7 9 ←	6 8 ←	6 8 ←	6 7 ←	5 7 ←	5 7 ←	5 7 ←	6 7 ←	6 8 ←	6 8 ←	7 9 ←	7 10 ←	7 10 ←	7 12 ←	7 12 ←	7 12 ←	7 12 ←
Houston Pilots G - 75/76	7 13 ←	7 12 ←	7 13 ←	8 13 ←	7 12 ←	8 12 ←	8 12 ←	8 10 ←	7 9 ←	7 9 ←	6 8 ←	6 8 ←	6 8 ←	6 8 ←	6 8 ←	7 9 ←	8 10 ←	8 12 ←	8 12 ←	8 12 ←	8 12 ←	8 13 ←	7 13 ←	6 13 ←
Houston Pilots F - 63/64	7 13 ←	7 12 ←	7 13 ←	8 13 ←	7 12 ←	7 12 ←	8 12 ←	8 10 ←	7 10 ←	7 9 ←	6 8 ←	6 8 ←	6 8 ←	6 8 ←	6 9 ←	7 9 ←	8 10 ←	8 12 ←	8 12 ←	8 12 ←	8 13 ←	8 13 ←	7 13 ←	6 13 ←
Houston Pilots E - 51/52	8 14 ←	7 13 ←	7 13 ←	7 13 ←	7 12 ←	8 12 ←	8 12 ←	8 10 ←	7 10 ←	7 10 ←	6 9 ←	6 9 ←	6 8 ←	6 8 ←	7 9 ←	7 10 ←	8 10 ←	8 12 ←	8 13 ←	8 13 ←	8 13 ←	8 13 ←	8 13 ←	7 13 ←
Houston Pilots D - 37/38	8 14 ←	7 13 ←	7 13 ←	7 13 ←	7 12 ←	8 12 ←	8 12 ←	8 10 ←	7 10 ←	7 10 ←	6 9 ←	6 9 ←	6 8 ←	6 8 ←	7 9 ←	7 10 ←	8 10 ←	8 12 ←	8 13 ←	8 13 ←	8 13 ←	8 13 ←	8 13 ←	7 13 ←
Houston Pilots C - 25/26	8 14 ←	8 13 ←	7 13 ←	7 12 ←	7 12 ←	7 12 ←	8 12 ←	7 10 ←	7 10 ←	7 10 ←	6 9 ←	6 9 ←	6 8 ←	6 8 ←	6 9 ←	7 10 ←	8 10 ←	8 12 ←	8 13 ←	8 13 ←	8 13 ←	8 13 ←	8 13 ←	8 13 ←
Houston Pilots B - 11/12	8 14 ←	8 13 ←	7 13 ←	7 13 ←	7 12 ←	7 13 ←	7 12 ←	6 10 ←	6 10 ←	6 10 ←	6 9 ←	6 10 ←	6 9 ←	6 8 ←	6 9 ←	6 10 ←	6 10 ←	7 12 ←	7 12 ←	8 13 ←	8 13 ←	8 13 ←	8 13 ←	8 13 ←
Houston Pilots A - 1 & 2 Bravo	8 14 ←	8 14 ←	8 13 ←	8 14 ←	8 13 ←	8 13 ←	8 13 ←	8 13 ←	8 12 ←	8 12 ←	7 10 ←	7 12 ←	7 10 ←	7 7 ←	7 7 ←	8 10 ←	8 12 ←	8 13 ←	8 14 ←	9 14 ←	9 14 ←	9 14 ←	8 14 ←	8 14 ←

NOTE: This is automated data that may/may not agree with the official BAM thinking that's found on the daily slides.  
This data should be used as a guide only.



# Houston Pilots: MON. 9/1/2025

## Forecast Discussion

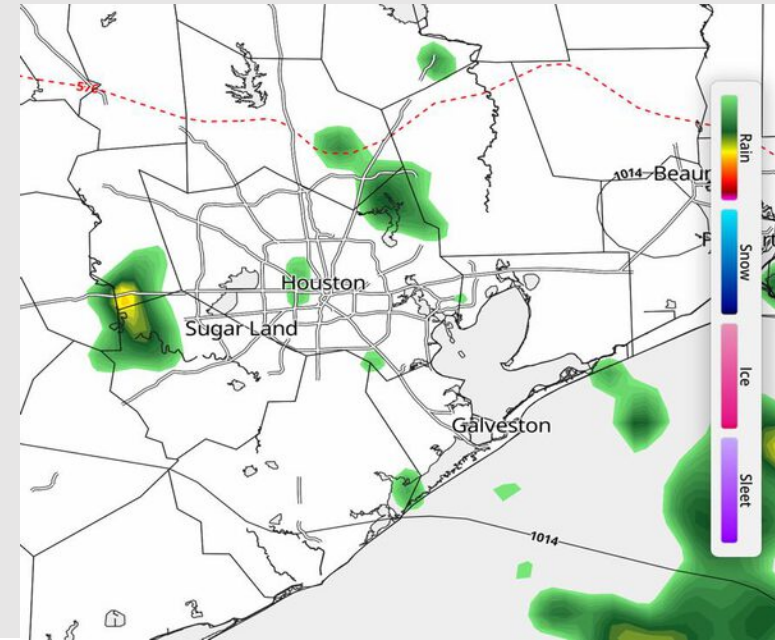
**Precip:** Scattered showers and storms in play through 5PM. Isolated showers will be possible through 10PM. **Storms will be capable of producing lightning, heavy downpours and wind gusts of 25-30 kts.**

**Wind:** Winds will be variable for the rest of the day with the tendency to blow from the E/SE. **N of Morgan's Point:** Winds will be at 2 – 7 kts. **S of Morgan's Point:** Winds will be at 4 – 9 kts.

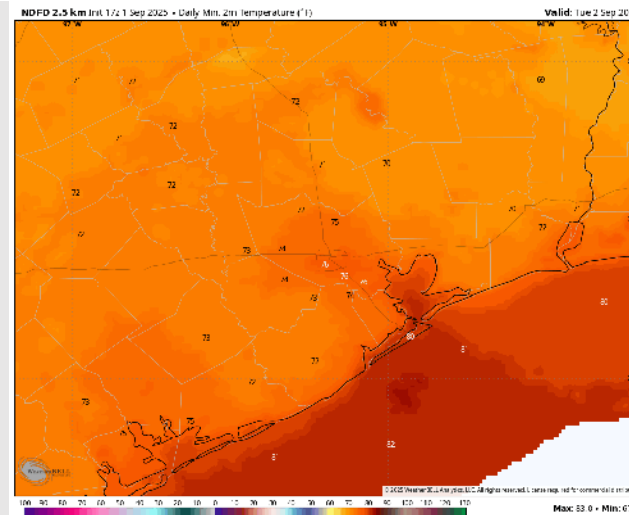
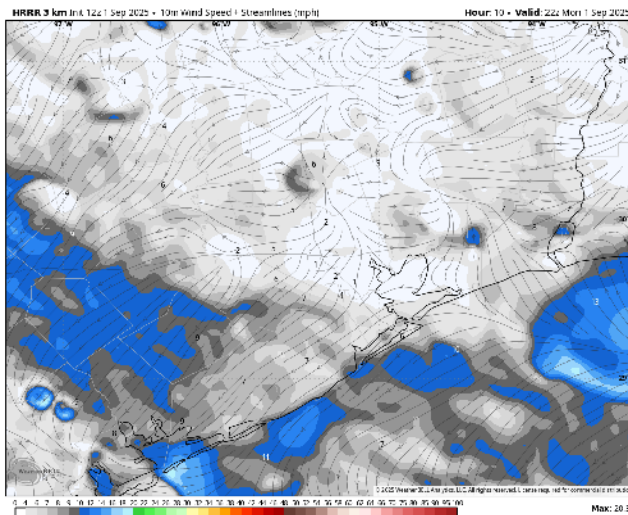
**Low Temps:** **N of Morgan's Point:** Mid 70s F. **S of Morgan's Point:** Upper 70s F.

**Visibility:** No fog concerns today, however, visibilities may be reduced under heavier downpours.

## Precip Image: 4 PM CT



**Wind Speed:**  
5 PM CT



**Low Temps**  
**TUE AM**

# Houston Pilots: TUE. 9/2/2025

## Forecast Discussion

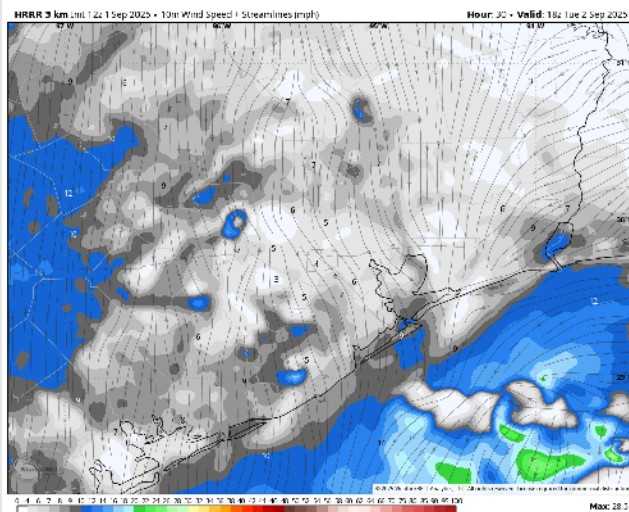
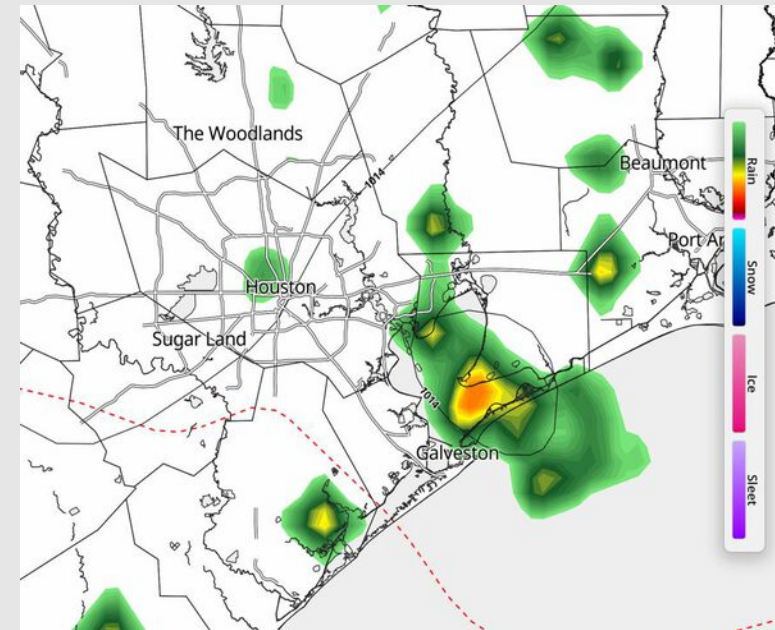
**Precip:** Scattered showers and storms in play mainly for Stations S of Morgan's Point between 5 AM and 7 PM. Highest coverage is anticipated from 4PM to 7PM. **Storms will be capable of producing lightning, heavy downpours and wind gusts of 20-25 kts.**

**Wind:** Winds will be generally out of the E/NE, becoming variable at times. **N of Morgan's Point:** Winds will be at 2 – 7 kts. **S of Morgan's Point:** Winds will be at to 3 – 8 kts. **Brief non-thunderstorm wind gusts of 20 kts will be in play at the Boarding Station from 10 AM to 1 PM.**

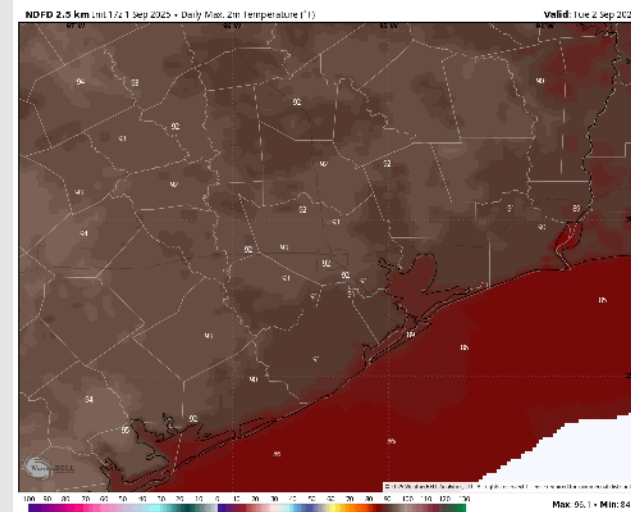
**High Temps:** **N of Morgan's Point:** Low 90s F. **S of Morgan's Point:** High 80s / Near 90 F.

**Visibility:** No fog concerns for Tuesday, however, visibilities can be briefly reduced under heavy downpours.

## Precip Image: 5 PM CT



**Wind Speed:**  
**1 PM CT**



**High Temps**  
**Tuesday**

# Houston Pilots: WED. 9/3/2025

## Forecast Discussion

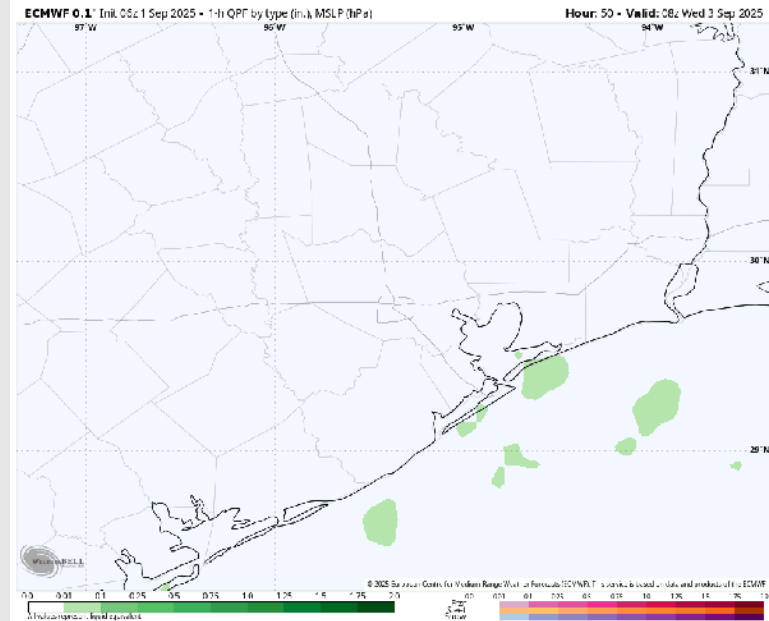
**Precip:** Isolated showers in play for Stations S of 25/26 between 2-10 AM. Favoring dry conditions for all Stations after then.

**Wind:** Winds will be out of the N throughout Wednesday. **N of Morgan's Point:** Winds will be at 2 – 7 kts. **S of Morgan's Point:** Winds will be at 4 – 9 kts.

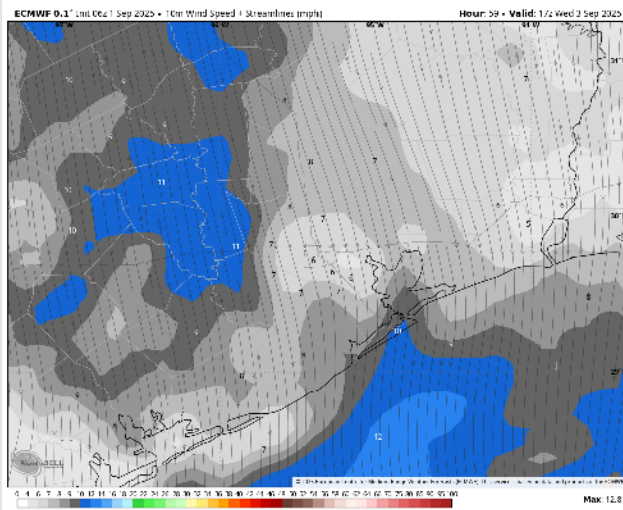
**High Temps:** **N of Morgan's Point:** Low 90s F. **S of Morgan's Point:** High 80s F / Near 90 F.

**Visibility:** No visibility concerns Wednesday.

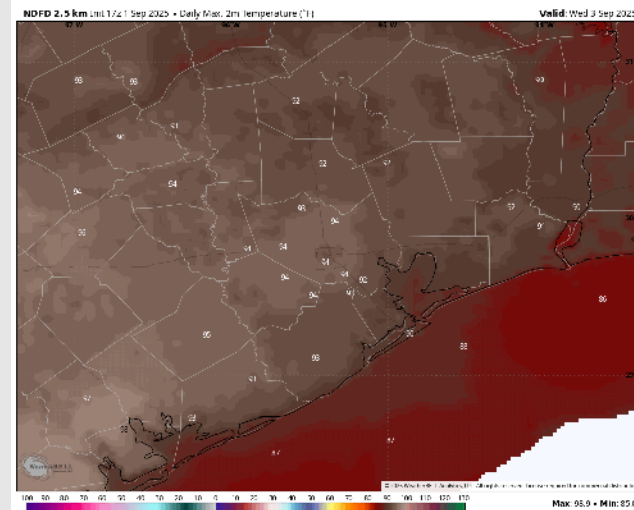
## Precip Image: 3 AM CT



**Wind Speed:**  
12 PM CT



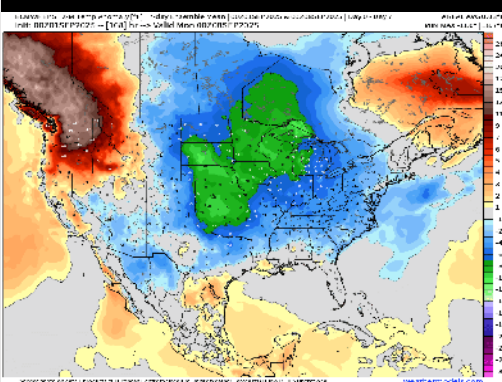
**High Temps**  
**Wednesday**



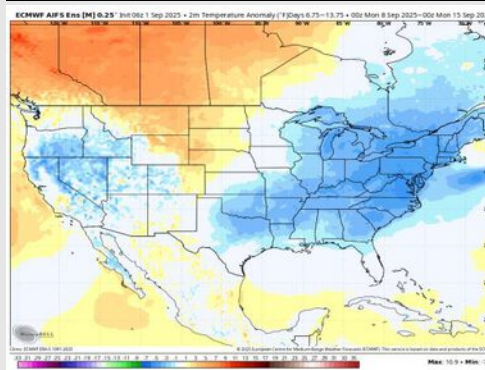


# Houston Pilots: 9/1/25

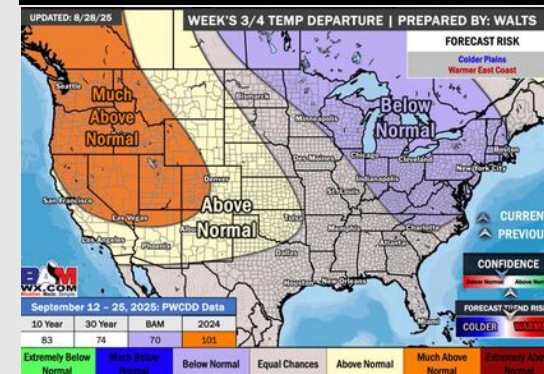
## Next 7 Day Temperature Departure



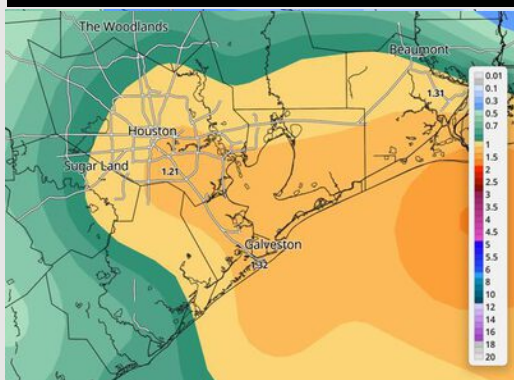
## 8-14 Day Temperature Departure



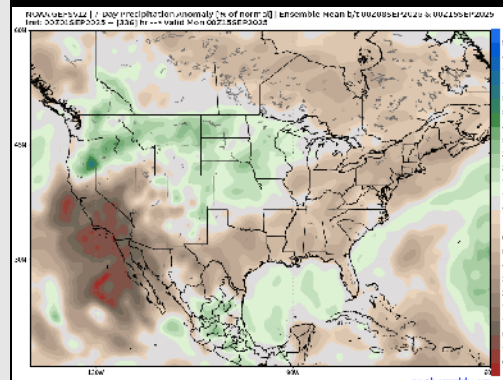
## 15-30 Day Temperature Departure



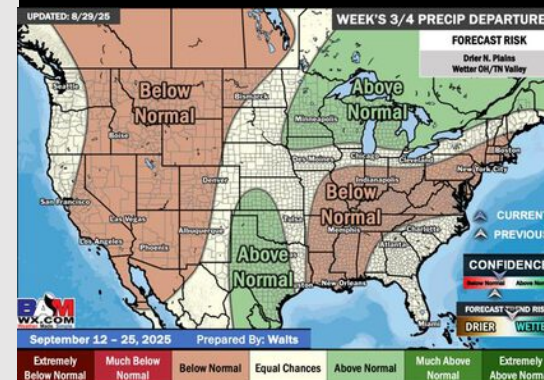
## Next 7 Day Total Precipitation



## 8-14 Day % of Average Precip.



## 15-30 Day % of Average Precip.



- Temps are expected to be near normal for the next 7 days with scattered rain chances bringing a few downpours through the start of the week.
- Near normal temperatures and below normal rain chances are favored for days 8 – 14.
- Near normal temperatures are favored for mid to late September with near normal rainfall chances.