



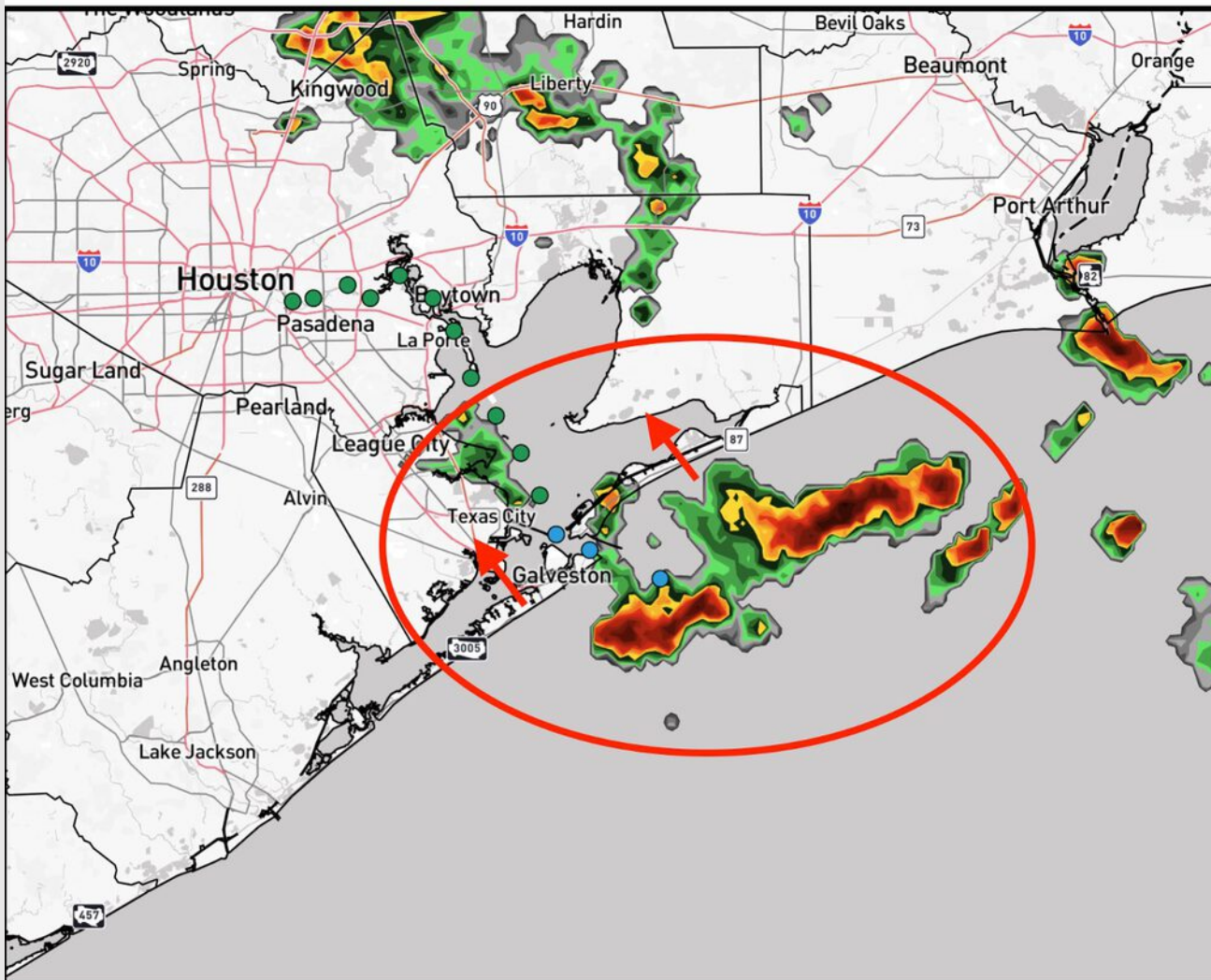
# Strong Storm Risks

Current: 9:10 AM CT 8/1/25

Forecaster: Kemper



- ✓ **Red Circle:** Area with greatest potential to see localized gusts of 30-35kts and waterspouts through ~11:30AM-CT.



# Houston Pilots Forecast Package

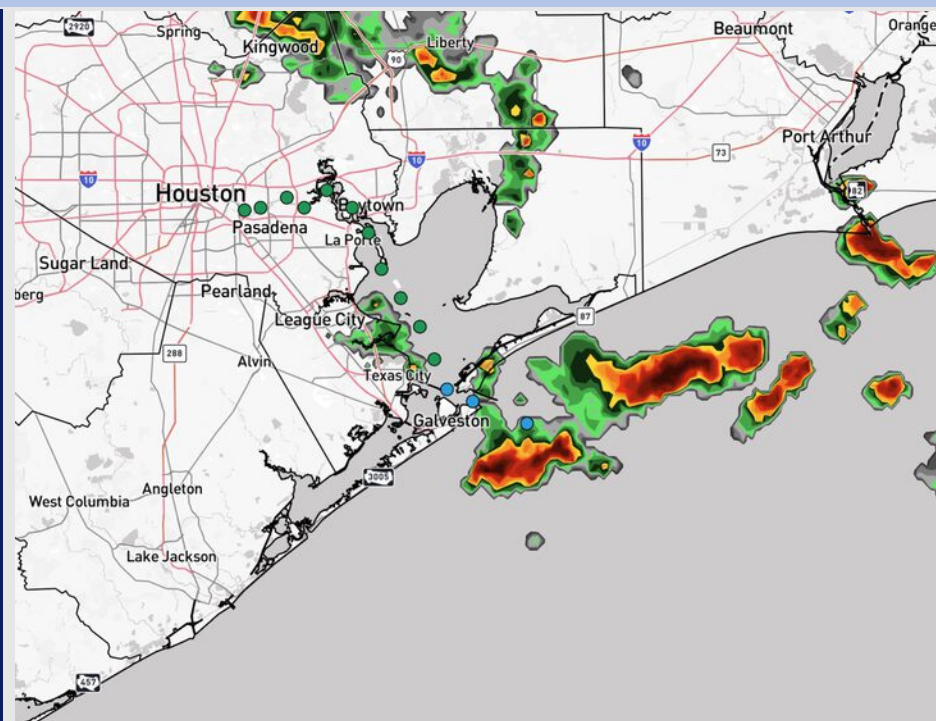


Updated: 9:10 AM CT  
Friday, August 1, 2025

Forecaster: John Kemper

## Weather Headlines

- Scattered showers possible from 10 AM – 1 PM today for all stations.
- Scattered showers/storms possible S of Morgan's Point from 5 AM – 1 PM Saturday.
- No tropical development favored over the next 10 days.



Current Radar: 9:05 AM CT

As always, please do not hesitate to reach out to us with any forecast questions at [\(317\)-560-8122](tel:317-560-8122). Press 1 for forecast questions.

You can also access real-time forecast updates and 24/7 meteorological chat assistance on your [Clarity](#) app. Click [here](#) for login assistance.

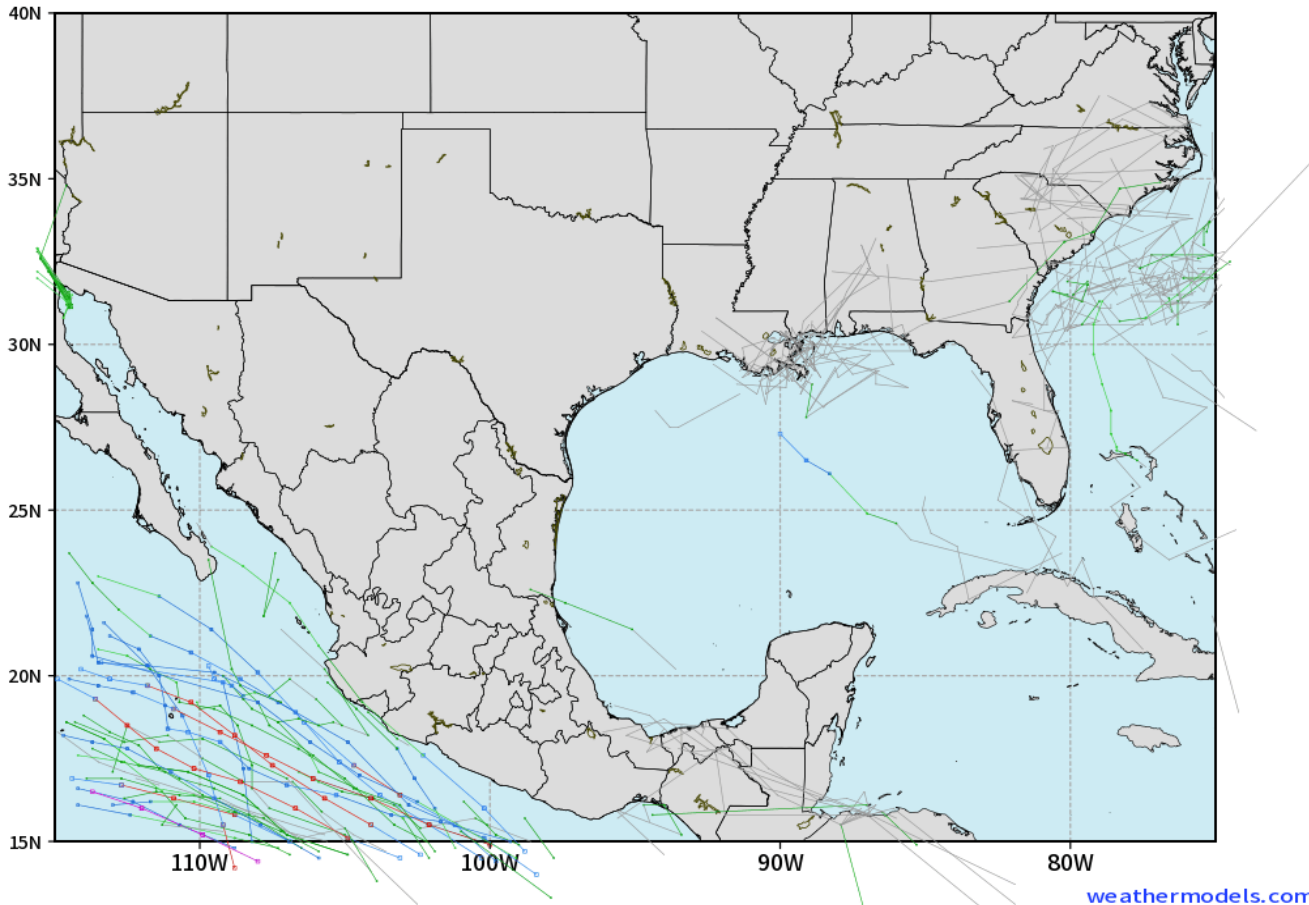


# Houston Pilots Tropical Update

## 10-Day Tropical Outlook

ECMWF GULF EPS Cyclone Locations --> Next [10-days]  
INIT: 00Z31JUL2025 --> UNTIL 00Z10AUG2025

o-o ENSEMBLE MEAN  
o-o 1000 - 1010 hPa  
o-o 980 - 999 hPa  
o-o 960 - 979 hPa  
o-o 950 - 959 hPa  
o-o < 950 hPa



No tropical development favored over the next 10 days.

# Houston Pilots Visibility Chart (miles)



Visibility	Fri 12 am	Fri 1 am	Fri 2 am	Fri 3 am	Fri 4 am	Fri 5 am	Fri 6 am	Fri 7 am	Fri 8 am	Fri 9 am	Fri 10 am	Fri 11 am	Fri 12 pm	Fri 1 pm	Fri 2 pm	Fri 3 pm	Fri 4 pm	Fri 5 pm	Fri 6 pm	Fri 7 pm	Fri 8 pm	Fri 9 pm	Fri 10 pm	Fri 11 pm
Houston Pilots N - 610 Bridge	10	10	10	10	10	10	10	10	10	10	10	10	10	10	10	10	10	10	10	10	10	10	10	10
Houston Pilots M - Kinder 1	10	10	10	10	10	10	10	10	10	10	10	10	10	10	10	10	10	10	10	10	10	10	10	10
Houston Pilots L - Greens Bayou	10	10	10	10	10	10	10	10	10	10	10	10	10	10	10	10	10	10	10	10	10	10	10	10
Houston Pilots K - Shell Crude	10	10	10	10	10	10	10	10	10	10	10	10	10	10	10	10	10	10	10	10	10	10	10	10
Houston Pilots J - Lynchburg Ferries	10	10	10	10	10	10	10	10	10	10	10	10	10	10	10	10	10	10	10	10	10	10	10	10
Houston Pilots I - Exxon 3	10	10	10	10	10	10	10	10	10	10	10	10	10	10	10	10	10	10	10	10	10	10	10	10
Houston Pilots H - Morgans Point	10	10	10	10	10	10	10	10	10	10	10	10	10	10	10	10	10	10	10	10	10	10	10	10
Houston Pilots G - 75/76	10	10	10	10	10	10	10	10	10	10	10	10	10	10	10	10	10	10	10	10	10	10	10	10
Houston Pilots F - 63/64	10	10	10	10	10	10	10	10	10	10	10	10	10	10	10	10	10	10	10	10	10	10	10	10
Houston Pilots E - 51/52	10	10	10	10	10	10	10	10	10	10	10	10	10	10	10	10	10	10	10	10	10	10	10	10
Houston Pilots D - 37/38	10	10	10	10	10	10	10	10	10	10	10	10	10	10	10	10	10	10	10	10	10	10	10	10
Houston Pilots C - 25/26	10	10	10	10	10	10	10	10	10	10	10	10	10	10	10	10	10	10	10	10	10	10	10	10
Houston Pilots B - 11/12	10	10	10	10	10	10	10	10	10	10	10	10	10	10	10	10	10	10	10	10	10	10	10	10
Houston Pilots A - 1 & 2 Bravo	10	10	10	10	10	10	10	10	10	10	10	10	10	10	10	10	10	10	10	10	10	10	10	10

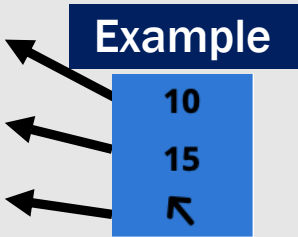
NOTE: This is automated data that may/may not agree with the official BAM thinking that’s found on the daily slides or special visibility report slides. This data should be used as a guide only



# Houston Pilots Wind Chart



Sustained Wind 10 Knots  
Gusts 15 Knots  
Wind from the SE



Wind	Fri 12 am	Fri 1 am	Fri 2 am	Fri 3 am	Fri 4 am	Fri 5 am	Fri 6 am	Fri 7 am	Fri 8 am	Fri 9 am	Fri 10 am	Fri 11 am	Fri 12 pm	Fri 1 pm	Fri 2 pm	Fri 3 pm	Fri 4 pm	Fri 5 pm	Fri 6 pm	Fri 7 pm	Fri 8 pm	Fri 9 pm	Fri 10 pm	Fri 11 pm
Houston Pilots N - 610 Bridge	5 10 ↑	5 9 ↗	5 10 ↗	5 9 ↗	5 9 ↗	5 9 ↗	3 9 ↗	3 8 ↗	3 9 ↗	3 9 →	5 10 →	5 10 →	5 10 →	3 9 →	3 8 →	3 8 →	3 8 ↘	3 8 ↑	3 9 ↑	3 9 ↑	5 10 ↑	5 9 ↑	3 9 ↑	3 9 ↑
Houston Pilots M - Kinder 1	5 10 ↑	5 9 ↗	5 10 ↗	5 9 ↗	5 9 ↗	5 9 ↗	3 8 ↗	3 8 ↗	3 9 ↗	3 9 →	5 9 →	5 10 →	5 10 →	3 9 →	3 8 →	3 8 →	3 8 ↘	3 8 ↑	3 9 ↑	3 9 ↑	5 10 ↑	5 9 ↑	3 9 ↑	3 9 ↑
Houston Pilots L - Greens Bayou	5 9 ↑	5 9 ↗	5 9 ↗	3 9 ↗	3 8 ↗	3 8 ↗	3 8 ↗	3 8 ↗	3 8 ↗	3 8 →	3 9 →	5 10 →	5 10 →	3 9 →	3 8 →	3 8 →	3 8 ↘	3 8 ↑	3 9 ↑	3 8 ↑	5 9 ↑	3 9 ↑	3 8 ↑	3 8 ↑
Houston Pilots K - Shell Crude	5 9 ↑	5 9 ↗	5 9 ↗	3 9 ↗	3 8 ↗	3 8 ↗	3 8 ↗	3 8 ↗	3 8 ↗	3 8 →	3 9 →	5 10 →	5 9 →	3 9 →	3 8 →	3 8 →	3 8 ↘	3 8 ↑	3 9 ↑	3 8 ↑	5 9 ↑	3 9 ↑	3 8 ↑	3 8 ↑
Houston Pilots J - Lynchburg Ferries	3 9 ↑	3 9 ↗	3 9 ↗	3 8 ↗	3 8 ↗	3 8 ↗	3 7 ↗	3 7 ↗	3 8 ↗	3 8 →	3 8 →	5 9 →	5 9 →	3 9 →	3 8 →	3 8 →	3 8 ↘	3 8 ↑	3 8 ↑	3 8 ↑	5 10 ↑	3 9 ↑	3 8 ↑	3 8 ↑
Houston Pilots I - Exxon 3	8 13 ↑	8 13 ↗	9 13 ↗	8 13 ↗	8 12 ↗	8 12 ↗	8 10 ↗	8 10 ↗	8 10 ↗	7 10 →	7 10 →	7 12 →	6 10 →	6 10 →	6 9 →	6 10 →	6 10 ↘	6 10 ↑	6 10 ↑	7 10 ↑	8 13 ↑	8 12 ↑	8 12 ↑	8 12 ↑
Houston Pilots H - Morgans Point	8 13 ↑	8 12 ↗	9 13 ↗	8 13 ↗	8 12 ↗	8 12 ↗	8 12 ↗	8 10 ↗	8 10 ↗	7 10 →	7 12 →	7 12 →	6 10 →	6 10 →	6 9 →	6 9 →	6 10 ↘	6 10 ↑	6 10 ↑	7 10 ↑	8 13 ↑	8 12 ↑	8 12 ↑	8 12 ↑
Houston Pilots G - 75/76	9 13 ↗	9 14 ↗	10 14 ↗	9 14 ↗	9 14 ↗	9 14 ↗	9 13 ↗	8 13 ↗	8 13 ↗	8 12 →	8 13 →	8 13 →	6 12 →	6 10 →	5 9 →	5 9 →	5 9 ↘	6 10 ↑	6 12 ↑	7 12 ↑	8 13 ↑	8 13 ↑	8 13 ↑	8 13 ↑
Houston Pilots F - 63/64	9 13 ↗	9 14 ↗	10 14 ↗	9 14 ↗	9 14 ↗	9 14 ↗	9 13 ↗	9 13 ↗	9 13 ↗	8 13 →	8 13 →	8 13 →	6 12 →	5 10 →	3 9 →	5 9 →	5 10 ↘	6 10 ↑	6 12 ↑	7 12 ↑	8 13 ↑	8 13 ↑	8 13 ↑	8 13 ↑
Houston Pilots E - 51/52	9 13 ↗	9 14 ↗	10 14 ↗	10 14 ↗	9 14 ↗	9 14 ↗	9 14 ↗	9 14 ↗	9 14 ↗	8 13 →	8 13 →	8 13 →	6 12 →	6 10 →	5 9 →	5 9 →	6 10 ↘	6 10 ↑	6 10 ↑	7 12 ↑	8 13 ↑	9 14 ↑	9 13 ↑	9 13 ↑
Houston Pilots D - 37/38	9 13 ↗	9 14 ↗	10 14 ↗	10 14 ↗	9 14 ↗	9 14 ↗	9 14 ↗	9 14 ↗	9 14 ↗	8 13 →	8 13 →	8 14 →	6 13 →	6 10 →	5 9 →	5 9 →	6 10 ↘	6 10 ↑	6 12 ↑	7 12 ↑	8 13 ↑	9 14 ↑	9 13 ↑	9 13 ↑
Houston Pilots C - 25/26	8 13 ↗	8 13 ↗	9 14 ↗	9 14 ↗	9 14 ↗	9 14 ↗	9 14 ↗	9 14 ↗	9 14 ↗	8 13 →	8 13 →	8 13 →	7 13 →	6 10 →	6 9 →	5 9 →	6 10 ↘	6 10 ↑	6 12 ↑	8 13 ↑	8 13 ↑	8 13 ↑	8 13 ↑	8 13 ↑
Houston Pilots B - 11/12	8 13 ↗	8 13 ↗	8 14 ↗	8 14 ↗	8 14 ↗	8 14 ↗	8 14 ↗	8 14 ↗	8 14 ↗	8 13 →	8 13 →	8 14 →	7 13 →	6 12 →	6 9 →	5 10 →	6 10 ↘	6 10 ↑	6 12 ↑	7 12 ↑	8 13 ↑	8 13 ↑	8 13 ↑	7 13 ↑
Houston Pilots A - 1 & 2 Bravo	9 13 ↗	9 14 ↗	10 15 ↗	10 15 ↗	10 15 ↗	10 16 ↗	10 16 ↗	10 16 ↗	10 15 ↗	10 15 →	9 14 →	8 15 →	8 13 →	6 12 →	5 9 →	5 10 →	6 10 ↘	6 10 ↑	6 12 ↑	7 13 ↑	8 13 ↑	8 13 ↑	8 14 ↑	8 13 ↑

NOTE: This is automated data that may/may not agree with the official BAM thinking that's found on the daily slides.  
This data should be used as a guide only.

# Houston Pilots: FRI. 8/1/2025

## Forecast Discussion

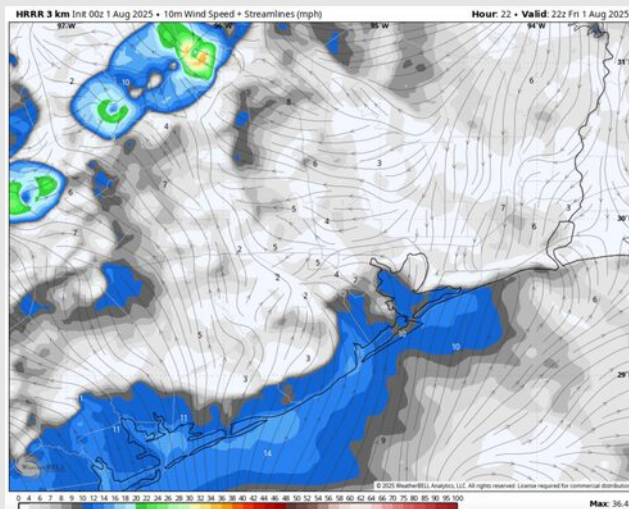
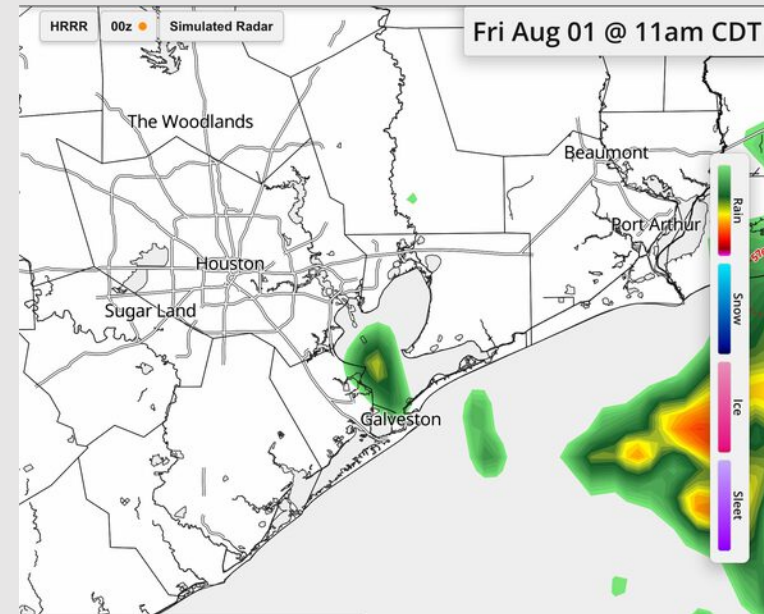
**Precip:** Scattered showers possible from 10 AM – 1 PM today for all stations. Some storms may carry risks of isolated hail, lightning, and wind gusts of 25– 35 kts.

**Wind:** Winds will be mostly from the SW today, but winds will be variable from 11 AM – 6PM. **N of Morgan's Point:** Winds will be at 4 – 9 kts. **S of Morgan's Point:** Winds will be at 5 – 10 kts.

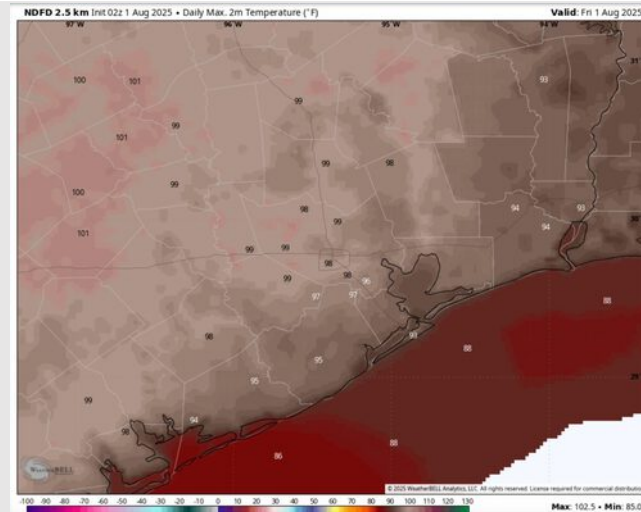
**High Temps:** **N of Morgan's Point:** High 90s F. **S of Morgan's Point:** Low 90s F.

**Visibility:** No fog concerns today, however, visibilities may be reduced under heavier downpours.

## Precip Image: 11 AM CT



Wind Speed:  
5 PM CT



High Temps  
Today

# Houston Pilots: SAT. 8/2/2025

## Forecast Discussion

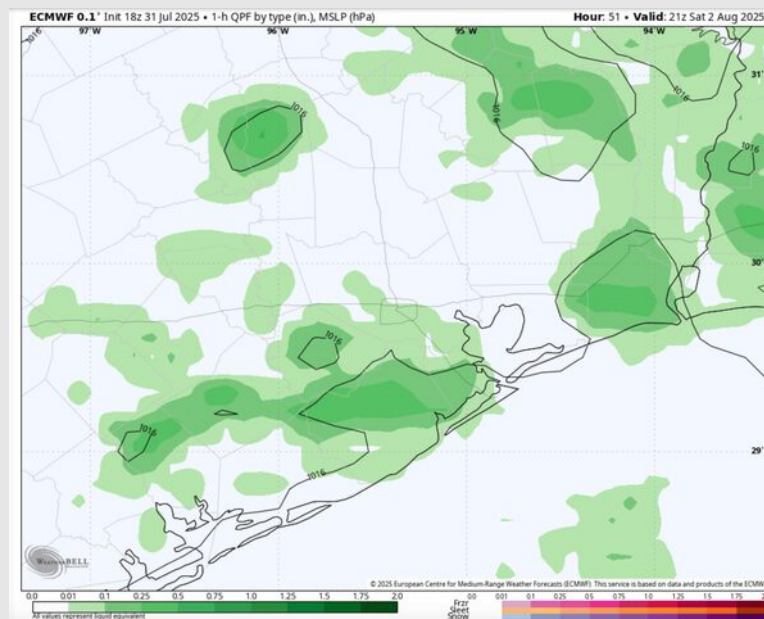
**Precip:** Scattered showers/storms possible S of Morgan's Point from 5 AM – 1 PM. Scattered showers/storms possible for all Stations from 2PM – 11PM Saturday. **Some storms may carry risks of lightning, heavy downpours, and wind gusts of 25 kts.**

**Wind:** Winds will be from the NW through 1 PM, then will be variable the rest of the day. **N of Morgan's Point:** Winds will be at 1 – 6 kts. **S of Morgan's Point:** Winds will be at 3 – 8 kts.

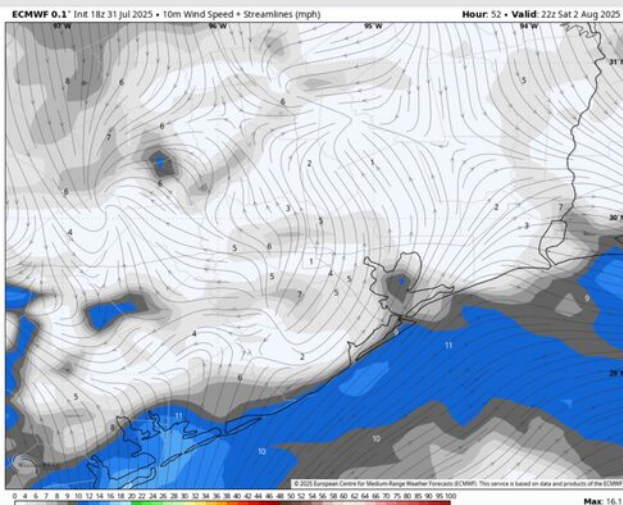
**High Temps:** **N of Morgan's Point:** Mid 90s F. **S of Morgan's Point:** Low 90s F.

**Visibility:** No fog concerns Saturday, however, visibilities may be reduced under heavier downpours.

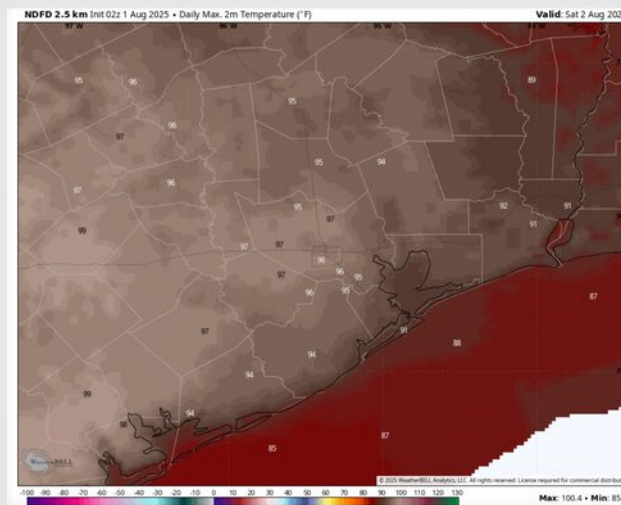
## Precip Image: 4 PM CT



**Wind Speed:**  
5 PM CT



**High Temps**  
**Saturday**





# Houston Pilots: SUN. 8/3/2025

## Forecast Discussion

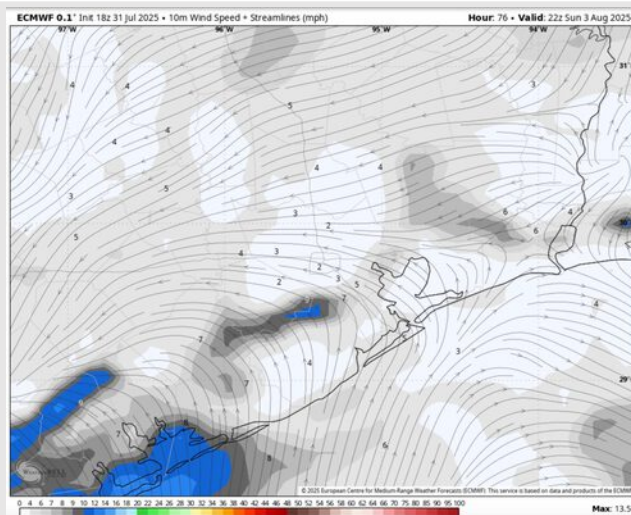
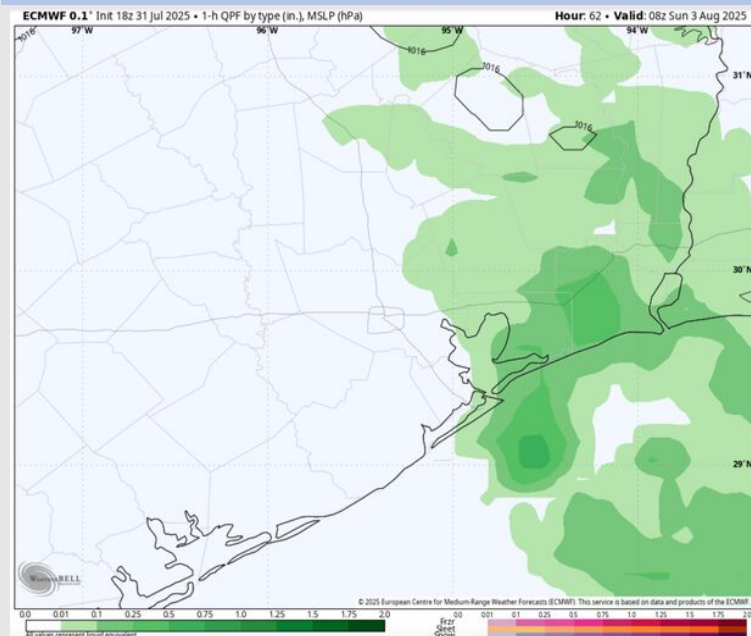
**Precip:** Scattered showers and storms from 3AM – 7AM with additional chances for scattered showers from 2PM – 7PM.

**Wind:** Winds will be variable throughout the day Sunday. **N of Morgan's Point:** Winds will be at 1 – 6 kts. **S of Morgan's Point:** Winds will be 1 – 6 kts.

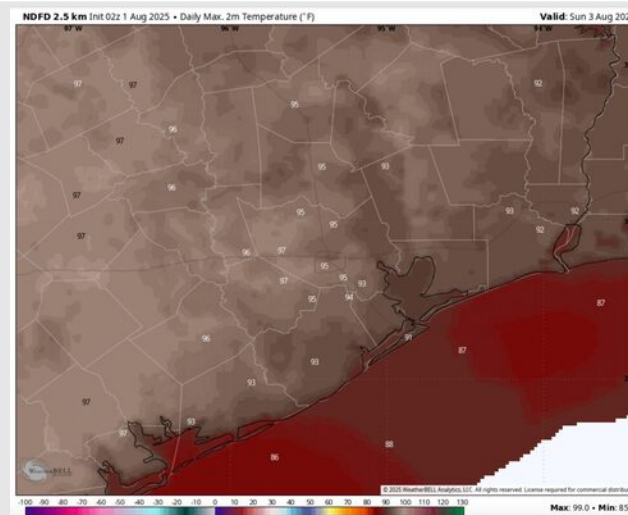
**Low Temps:** **N of Morgan's Point:** Mid 90s F. **S of Morgan's Point:** Low 90s F.

**Visibility:** No visibility concerns Sunday.

## Precip Image: 3 AM CT



Wind Speed:  
5 PM CT

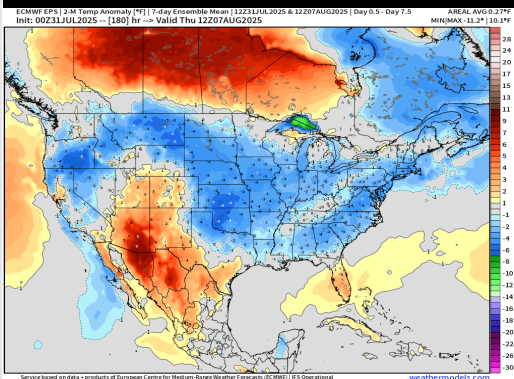


High Temps  
Sunday

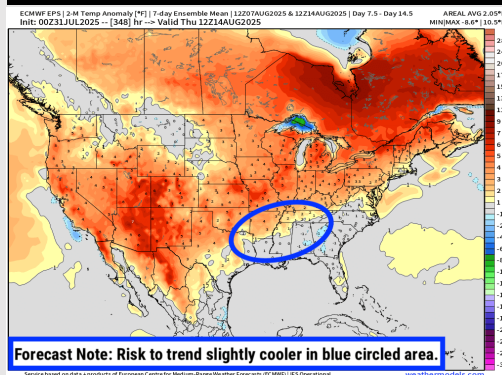


# Houston Pilots: 8/01/25

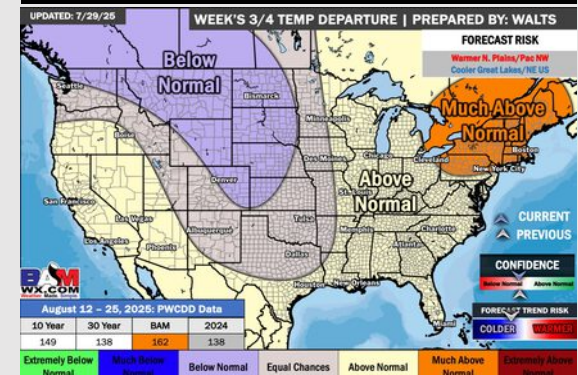
## Next 7 Day Temperature Departure



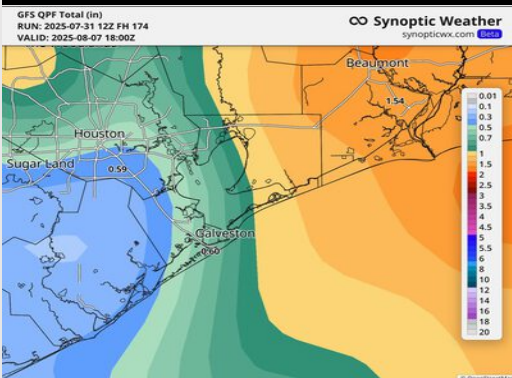
## 8-14 Day Temperature Departure



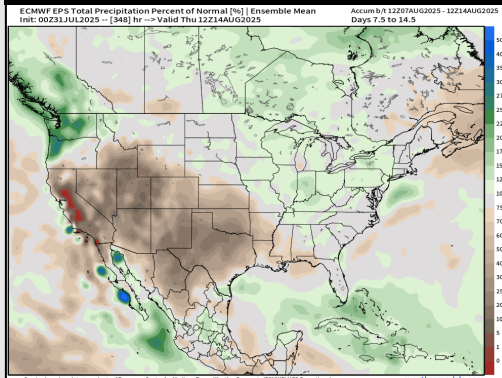
## 15-30 Day Temperature Departure



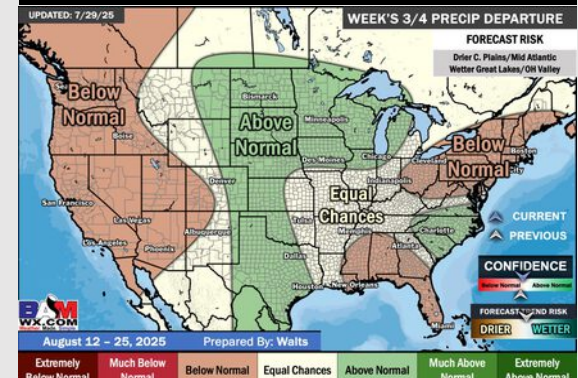
## Next 7 Day Total Precipitation



## 8-14 Day % of Average Precip.



## 15-30 Day % of Average Precip.



- Temps are expected to be near normal for the next 7 days with scattered rain chances into the weekend.
- Near normal temps and below normal rain chances are favored for days 8 – 14.
- Above normal temperatures are favored for the start of August along with above normal rainfall chances.