



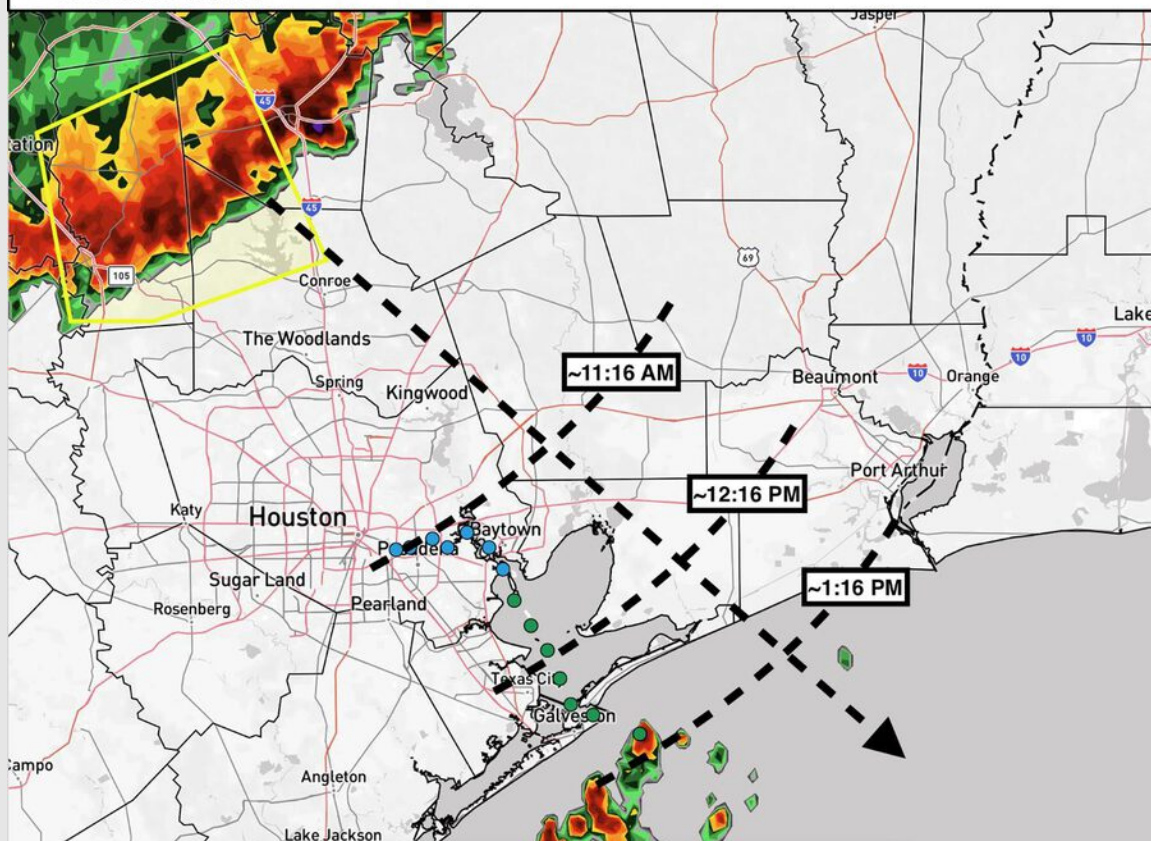
Storm Timing

Current: 9:23 AM CT 8/4/25

Forecaster: Griffin



- ✓ **BLACK DASHED TIMING:** Times represents a general ETA of a leading edge of thunderstorms moving into the area.
- ✓ Wind gusts up to 34 – 44 knots will be possible in addition to heavy downpours/lightning.
- ✓ Will need to watch for isolated to scattered storms prior to timing from the boarding station to 25/26.



Houston Pilots Forecast Package



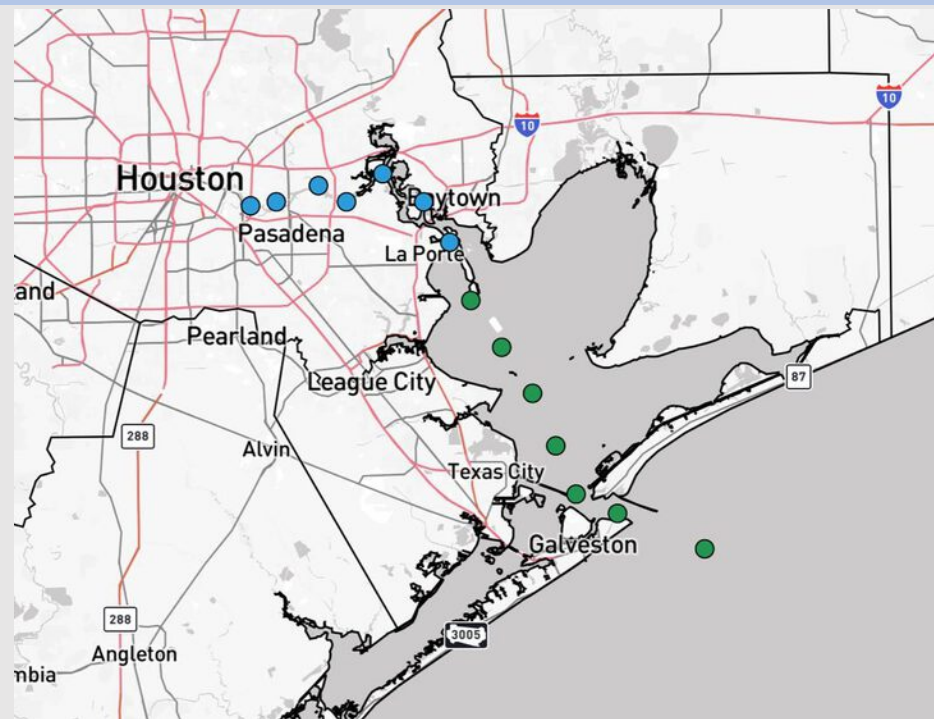
Updated: 9:30 PM CT

Monday, August 4, 2025

Forecaster: Tyler Riggles

Weather Headlines

- **A few strong storms will be possible this PM.**
- **Isolated showers possible Tuesday and Wednesday.**
- **No tropical development favored over the next 10 days.**



Current Radar: 9:18 PM CT

As always, please do not hesitate to reach out to us with any forecast questions at **(317)-560-8122**. **Press 1 for forecast questions.**

You can also access real-time forecast updates and 24/7 meteorological chat assistance on your **Clarity** app. Click [here](#) for login assistance.

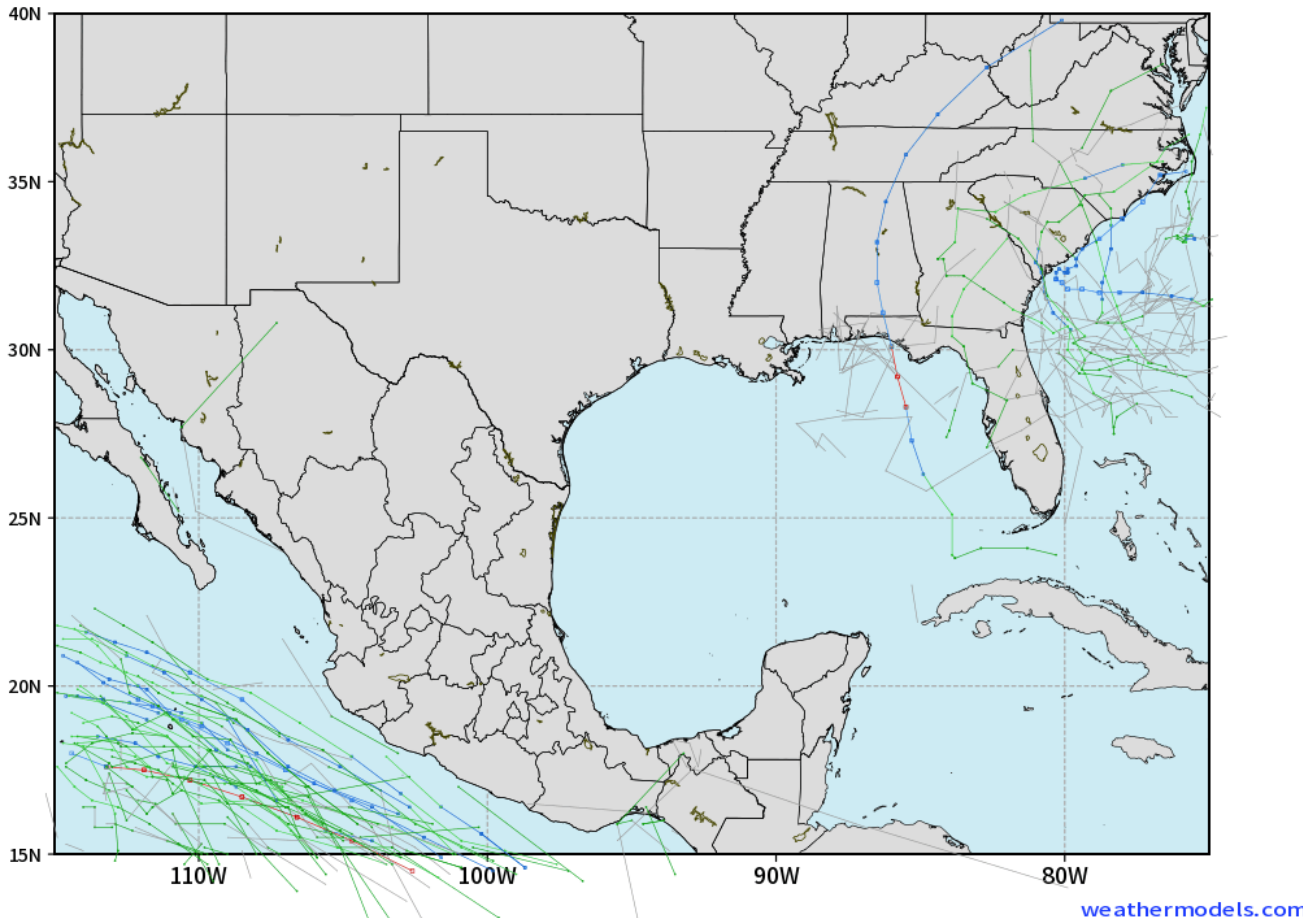


Houston Pilots Tropical Update

10-Day Tropical Outlook

ECMWF GULF EPS Cyclone Locations --> Next [10-days]
INIT: 12Z03AUG2025 --> UNTIL 12Z13AUG2025

o-o ENSEMBLE MEAN
o-o 1000 - 1010 hPa
o-o 980 - 999 hPa
o-o 960 - 979 hPa
o-o 950 - 959 hPa
o-o < 950 hPa



No tropical development favored over the next 10 days.

Houston Pilots Visibility Chart (miles)



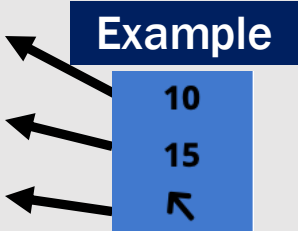
Visibility	Sun 11 pm	Mon 12 am	Mon 1 am	Mon 2 am	Mon 3 am	Mon 4 am	Mon 5 am	Mon 6 am	Mon 7 am	Mon 8 am	Mon 9 am	Mon 10 am	Mon 11 am	Mon 12 pm	Mon 1 pm	Mon 2 pm	Mon 3 pm	Mon 4 pm	Mon 5 pm	Mon 6 pm	Mon 7 pm	Mon 8 pm	Mon 9 pm	Mon 10 pm
Houston Pilots N - 610 Bridge	10	10	10	10	10	10	10	10	10	7.9	10	10	10	10	10	10	10	10	10	10	10	10	10	10
Houston Pilots M - Kinder 1	10	10	10	10	10	10	10	10	10	7.9	10	10	10	10	10	10	10	10	10	10	10	10	10	10
Houston Pilots L - Greens Bayou	10	10	10	10	10	10	10	10	10	7.9	10	10	10	10	10	10	10	10	10	10	10	10	10	10
Houston Pilots K - Shell Crude	10	10	10	10	10	10	10	10	10	7.9	10	10	10	10	10	10	10	10	10	10	10	10	10	10
Houston Pilots J - Lynchburg Ferries	10	10	10	10	10	10	10	10	10	7.9	10	10	10	10	10	10	10	10	10	10	10	10	10	10
Houston Pilots I - Exxon 3	10	10	10	10	10	10	10	10	10	6.9	10	10	10	10	10	10	10	10	10	10	10	10	10	10
Houston Pilots H - Morgans Point	10	10	10	10	10	10	10	10	10	7.9	10	10	10	10	10	10	10	10	10	10	10	10	10	10
Houston Pilots G - 75/76	10	10	10	10	10	10	10	10	10	10	10	10	10	10	10	10	10	10	10	10	10	10	10	9
Houston Pilots F - 63/64	10	10	10	10	10	10	10	10	10	10	10	10	10	10	10	10	10	10	10	10	10	10	10	10
Houston Pilots E - 51/52	10	10	10	10	10	10	10	10	10	10	10	10	10	10	10	10	10	10	10	10	10	10	10	10
Houston Pilots D - 37/38	10	10	10	10	10	10	10	10	10	10	10	10	10	10	10	10	10	10	10	10	10	10	10	10
Houston Pilots C - 25/26	10	10	10	10	10	10	10	10	10	10	10	10	10	10	10	10	10	10	10	10	10	10	10	10
Houston Pilots B - 11/12	10	10	10	10	10	10	10	10	10	10	10	10	10	10	10	10	10	10	10	10	10	10	10	10
Houston Pilots A - 1 & 2 Bravo	10	10	10	10	10	10	10	10	10	7.9	10	10	10	10	10	10	10	10	10	10	10	10	10	10

NOTE: This is automated data that may/may not agree with the official BAM thinking that's found on the daily slides or special visibility report slides. This data should be used as a guide only

Houston Pilots Wind Chart



Sustained Wind 10 Knots
Gusts 15 Knots
Wind from the SE



Wind	Sun 11 pm	Mon 12 am	Mon 1 am	Mon 2 am	Mon 3 am	Mon 4 am	Mon 5 am	Mon 6 am	Mon 7 am	Mon 8 am	Mon 9 am	Mon 10 am	Mon 11 am	Mon 12 pm	Mon 1 pm	Mon 2 pm	Mon 3 pm	Mon 4 pm	Mon 5 pm	Mon 6 pm	Mon 7 pm	Mon 8 pm	Mon 9 pm	Mon 10 pm
Houston Pilots N - 610 Bridge	3	2	2	2	1	1	1	1	1	1	1	1	2	3	3	3	3	3	5	5	5	5	3	3
	7	6	5	5	5	5	5	3	3	3	3	5	6	7	8	8	9	9	10	9	9	9	9	7
	↑	↑	↑	↑	↗	↗	↗	↑	↑	↖	↖	↗	↗	↗	↓	↖	↖	↖	↖	↖	↖	↖	↖	↗
Houston Pilots M - Kinder 1	3	2	2	2	1	1	1	1	1	1	1	2	2	3	3	3	3	3	5	5	5	5	3	3
	7	6	5	5	5	5	5	3	3	3	3	5	6	7	8	8	9	9	9	9	9	9	9	7
	↑	↑	↑	↑	↗	↗	↗	↑	↑	↖	↖	↗	↗	↗	↓	↖	↖	↖	↖	↖	↖	↖	↖	↗
Houston Pilots L - Greens Bayou	3	2	2	1	1	1	1	1	1	1	1	1	2	3	3	3	3	3	5	3	5	3	3	3
	7	6	5	5	3	3	3	3	2	3	3	3	6	7	8	8	9	9	9	9	8	9	8	7
	↑	↑	↑	↗	↗	↗	↗	↗	↖	↖	↖	↗	↑	↗	↓	↓	↖	↖	↖	↖	↖	↖	↑	↗
Houston Pilots K - Shell Crude	2	2	1	1	1	1	1	1	1	1	1	1	2	3	3	3	3	5	5	5	3	5	3	3
	7	6	5	5	3	3	3	3	2	3	3	3	6	7	8	8	9	9	9	9	8	9	8	7
	↑	↑	↑	↗	↗	↗	↗	↗	↑	↖	↖	↖	↓	↓	↖	↓	↖	↖	↖	↖	↖	↖	↑	↗
Houston Pilots J - Lynchburg Ferries	2	1	1	1	1	1	1	1	1	1	1	1	2	3	3	3	3	3	3	3	3	3	3	3
	6	5	5	3	3	3	3	2	2	3	3	3	6	7	8	8	9	9	9	9	8	9	8	7
	↑	↑	↑	↗	↗	↗	↗	↗	↖	↖	↖	↖	↖	↖	↖	↖	↖	↖	↖	↖	↖	↖	↑	↑
Houston Pilots I - Exxon 3	6	5	5	5	3	3	3	3	3	3	3	3	5	5	6	6	6	6	6	6	7	8	7	6
	8	7	7	7	6	6	6	6	6	6	6	6	7	8	9	10	10	12	12	10	10	10	12	10
	↑	↑	↗	↗	↗	↗	↗	↗	↗	↖	↖	↖	↖	↖	↖	↖	↖	↖	↖	↖	↖	↖	↖	↑
Houston Pilots H - Morgans Point	6	5	5	3	3	3	3	3	3	3	3	3	5	5	6	6	6	6	6	6	7	8	7	6
	8	7	7	7	6	6	6	6	6	6	6	7	7	8	9	10	10	10	10	10	10	10	10	10
	↑	↑	↗	↗	↗	↗	↗	↗	↗	↓	↓	↖	↖	↖	↖	↖	↖	↖	↖	↖	↖	↖	↖	↑
Houston Pilots G - 75/76	6	6	6	5	5	5	5	3	5	5	5	5	6	5	5	6	6	6	6	6	7	8	8	7
	8	7	7	7	7	7	7	7	8	7	7	7	8	9	9	10	10	10	12	10	10	12	12	10
	↑	↑	↗	↗	↗	↗	↗	↗	↗	↗	↖	↖	↖	↖	↖	↖	↖	↖	↖	↖	↖	↖	↖	↗
Houston Pilots F - 63/64	6	6	6	6	5	5	5	3	5	5	5	5	6	5	5	5	5	6	6	6	7	8	8	7
	8	8	7	7	7	7	7	7	7	7	7	7	8	9	9	10	10	10	12	10	10	12	12	10
	↑	↑	↗	↗	↗	↗	↗	↗	↗	↗	↖	↖	↖	↖	↖	↖	↖	↖	↖	↖	↖	↖	↖	↗
Houston Pilots E - 51/52	6	6	6	6	5	5	5	3	5	5	5	5	6	5	5	5	5	5	6	6	7	8	8	7
	8	7	7	7	7	7	7	7	7	7	8	8	9	9	9	10	10	10	10	10	10	12	12	10
	↑	↑	↗	↗	↗	↗	↗	↗	↗	↗	↑	↖	↖	↖	↖	↖	↖	↖	↖	↖	↖	↖	↖	↗
Houston Pilots D - 37/38	6	6	5	5	5	3	3	3	3	5	5	5	6	5	5	6	5	5	5	6	6	8	8	7
	8	7	7	7	7	7	7	7	7	7	8	8	9	9	9	9	9	9	10	10	10	12	12	10
	↑	↑	↑	↗	↗	↗	↗	↗	↗	↗	↑	↖	↖	↖	↖	↖	↖	↖	↖	↖	↖	↖	↖	↗
Houston Pilots C - 25/26	6	5	5	5	3	3	3	3	3	5	5	5	6	6	6	6	5	5	5	6	6	7	7	7
	8	7	7	7	7	7	7	7	7	6	7	7	8	9	9	9	9	9	9	9	10	10	10	10
	↑	↑	↑	↗	↗	↗	↗	↗	↗	↖	↑	↖	↖	↖	↖	↖	↖	↖	↖	↖	↖	↖	↖	↗
Houston Pilots B - 11/12	5	3	3	3	3	3	3	3	3	3	3	3	6	6	5	6	5	5	5	6	6	6	6	6
	7	7	7	7	7	7	7	7	7	7	8	7	8	9	9	9	9	9	9	9	10	10	10	10
	↗	↑	↑	↗	↗	↗	↗	↗	↗	↖	↗	↖	↖	↖	↖	↖	↖	↖	↖	↖	↖	↖	↖	↗
Houston Pilots A - 1 & 2 Bravo	6	5	5	5	5	5	5	5	5	6	6	6	6	5	5	5	3	3	5	6	6	7	6	6
	8	7	7	7	7	7	7	7	8	8	8	9	9	9	9	9	8	9	9	9	10	10	10	10
	↗	↑	↑	↗	↗	↗	↗	↗	↖	↖	↑	↗	↖	↓	↓	↖	↖	↖	↖	↖	↖	↖	↑	↑

NOTE: This is automated data that may/may not agree with the official BAM thinking that's found on the daily slides.
This data should be used as a guide only.

Houston Pilots: MON. 8/4/2025

Forecast Discussion

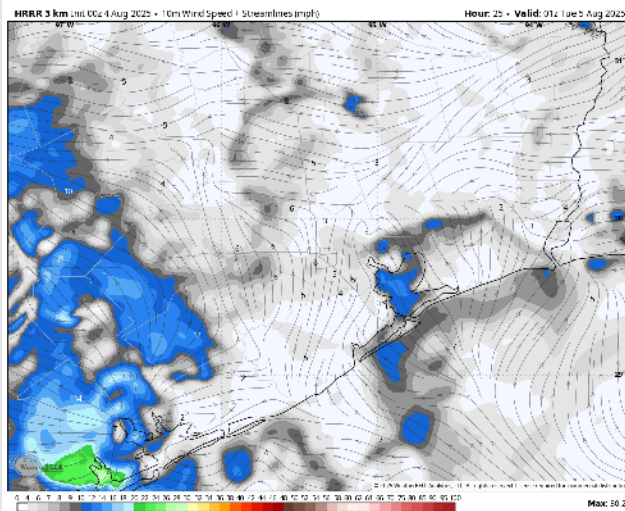
Precip: Isolated showers/a few storms will be possible at the Boarding Station from 7 AM to 12 PM, with coverage increasing to all Stations from 2-7 PM. Dry conditions favored after 7 PM. **Storms from 2-7 PM can hold risks for heavy rain, lightning and 35-45 kt wind gusts.**

Wind: Winds will be variable throughout the day. **N of Morgan's Point:** Winds will be at 1 – 6 kts. **S of Morgan's Point:** Winds will be at 2 – 7 kts, increasing to 5 – 10 kts after 6PM.

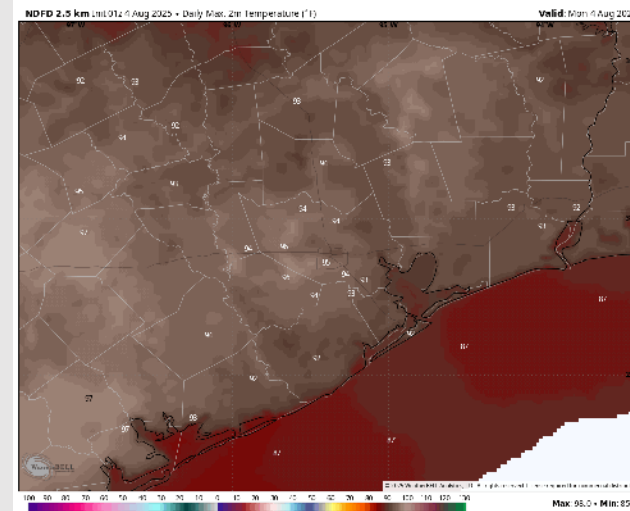
High Temps: **N of Morgan's Point:** Low/Mid 90s F. **S of Morgan's Point:** Upper 80s/Low 90s F.

Visibility: No fog concerns today, however, visibilities may be reduced under heavier downpours.

Precip Image: 4 PM CT



Wind Speed:
8 PM CT



High Temps
Today

Houston Pilots: TUE. 8/5/2025

Forecast Discussion

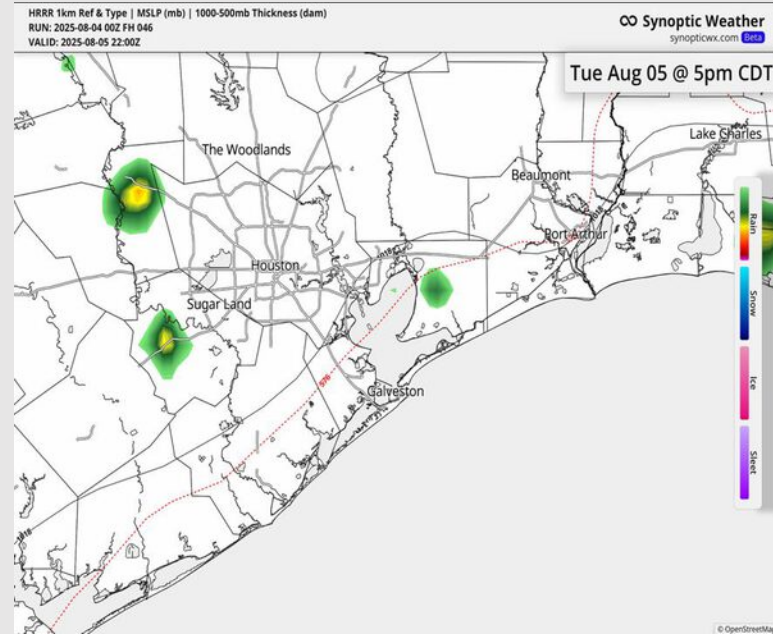
Precip: Isolated showers will be possible for all Stations from 2PM to 9PM.

Wind: Winds will be variable, generally shifting clockwise through 12 PM before settling out of the SE. **N of Morgan's Point:** Winds will be at 1 – 6 kts. **S of Morgan's Point:** Winds will be at 3 – 8 kts.

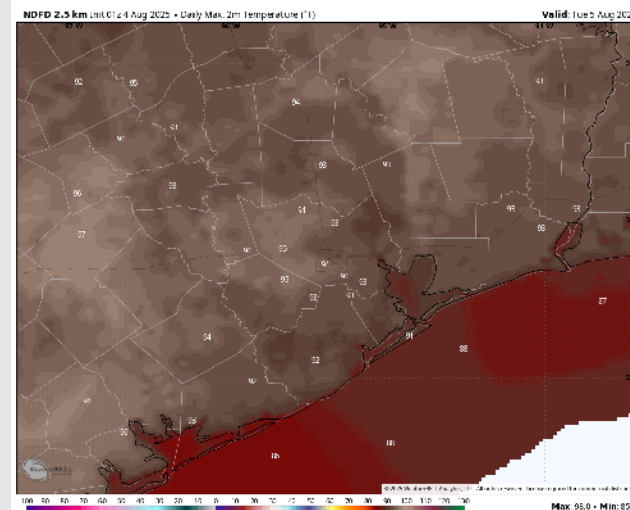
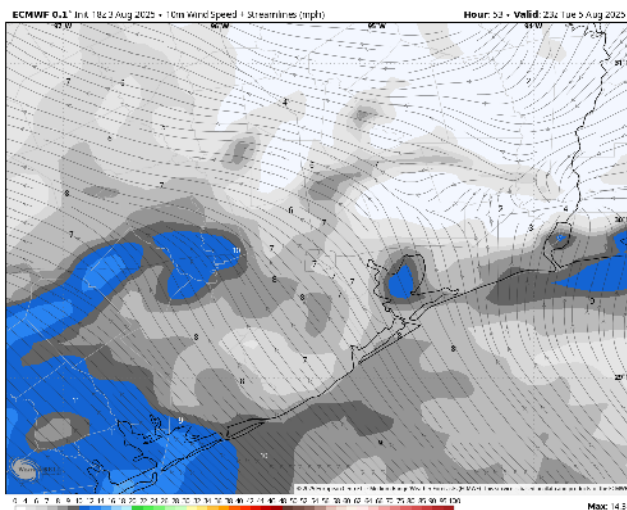
High Temps: **N of Morgan's Point:** Low 90s F. **S of Morgan's Point:** Near 90 F.

Visibility: No visibility concerns Tuesday.

Precip Image: 5 PM CT



Wind Speed:
6 PM CT



High Temps
Tuesday

Houston Pilots: WED. 8/6/2025

Forecast Discussion

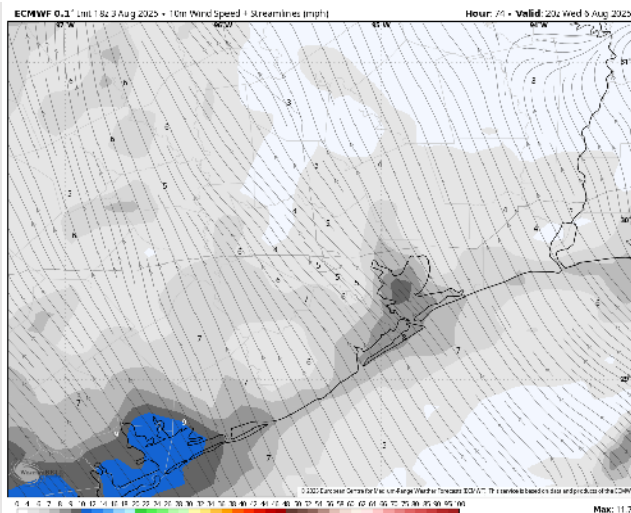
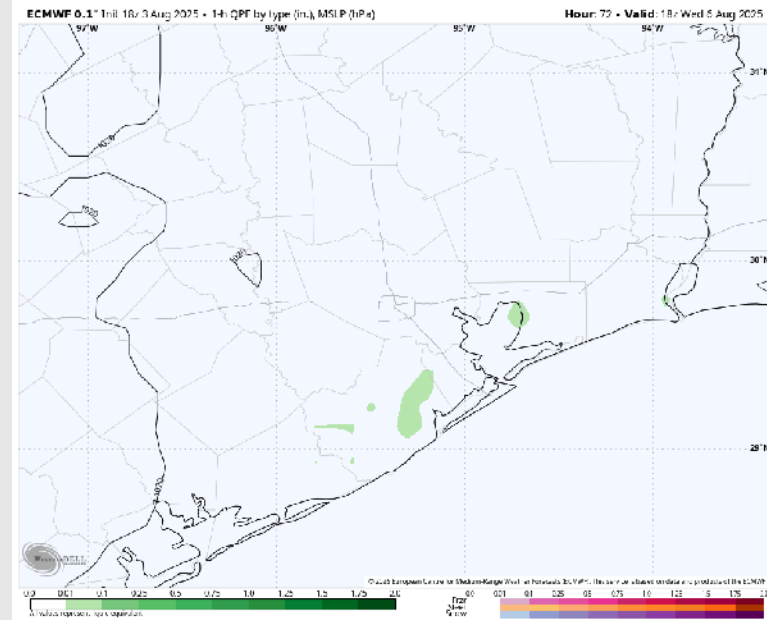
Precip: Isolated showers and storms possible from 10 AM to 6 PM for Stations S of Morgan's Point. **Some storms may have wind gusts of 25+ kts and heavier downpours.**

Wind: Winds will be generally out of the S/SW, becoming variable between 4 – 10 AM. **N of Morgan's Point:** Winds will be at 1 – 7 kts. **S of Morgan's Point:** Winds will be 3 – 8 kts.

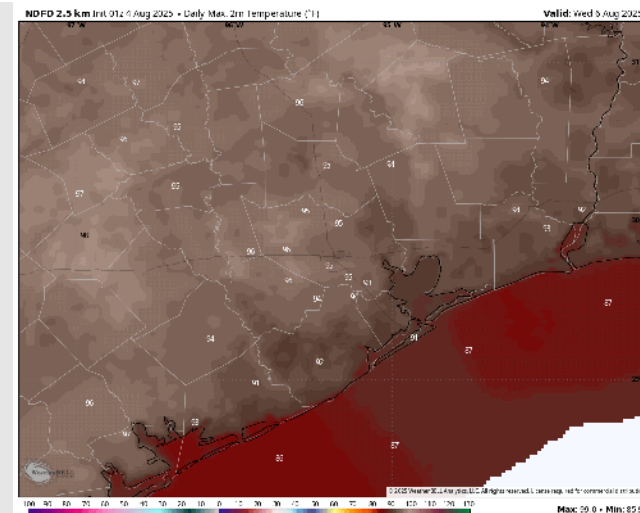
High Temps: **N of Morgan's Point:** Mid 90s F. **S of Morgan's Point:** Low 90s F.

Visibility: No fog concerns Wednesday, however, visibilities may be reduced briefly under heavier downpours.

Precip Image: 1 PM CT



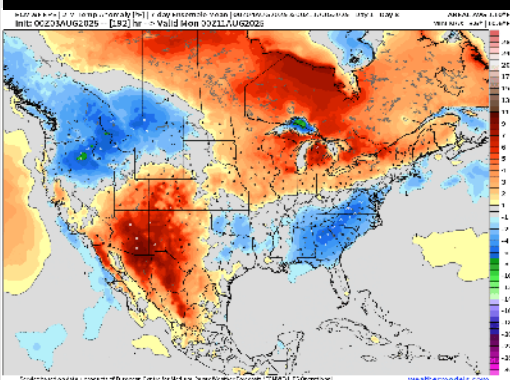
Wind Speed:
3 PM CT



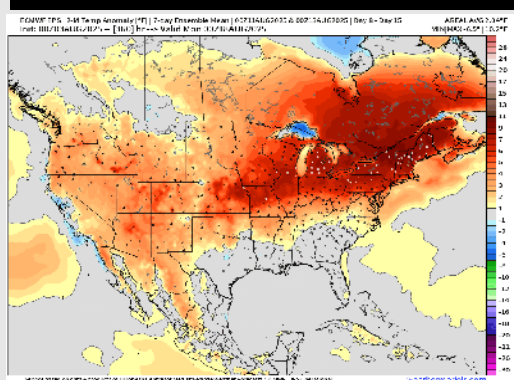
High Temps
Wednesday

Houston Pilots: 8/4/25

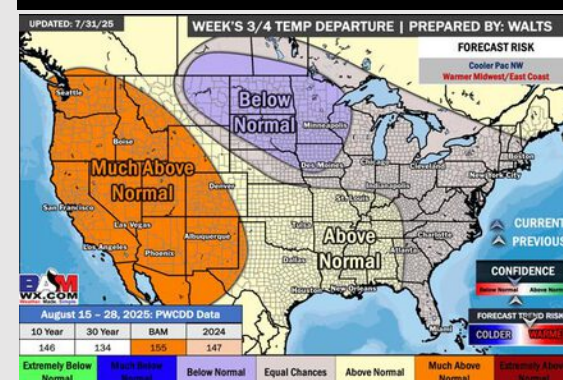
Next 7 Day Temperature Departure



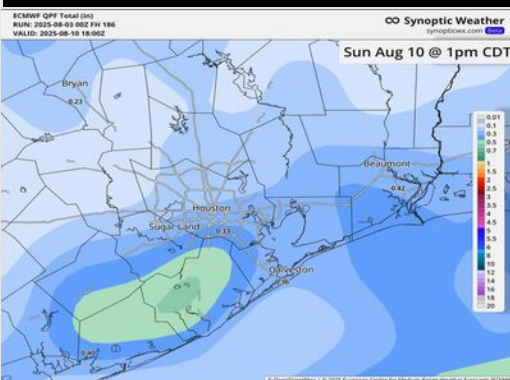
8-14 Day Temperature Departure



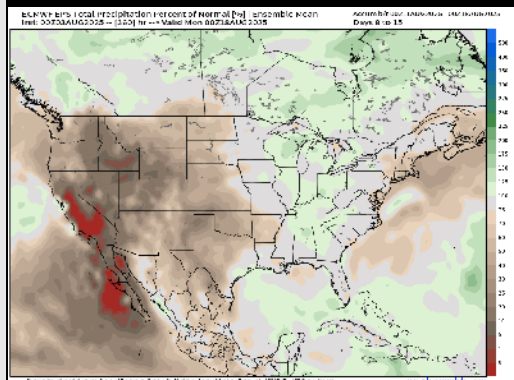
15-30 Day Temperature Departure



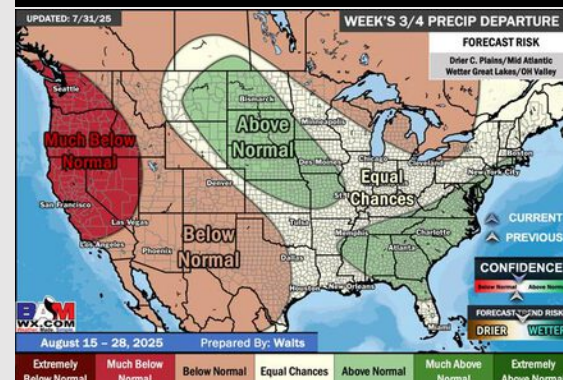
Next 7 Day Total Precipitation



8-14 Day % of Average Precip.



15-30 Day % of Average Precip.



- Temps are expected to be near normal for the next 7 days with scattered rain chances into early/mid week.
- Near normal temps and near normal rain chances are favored for days 8 – 14.
- Above normal temperatures are favored for the start of August along with near normal rainfall chances.