

# Houston Pilots Forecast Package



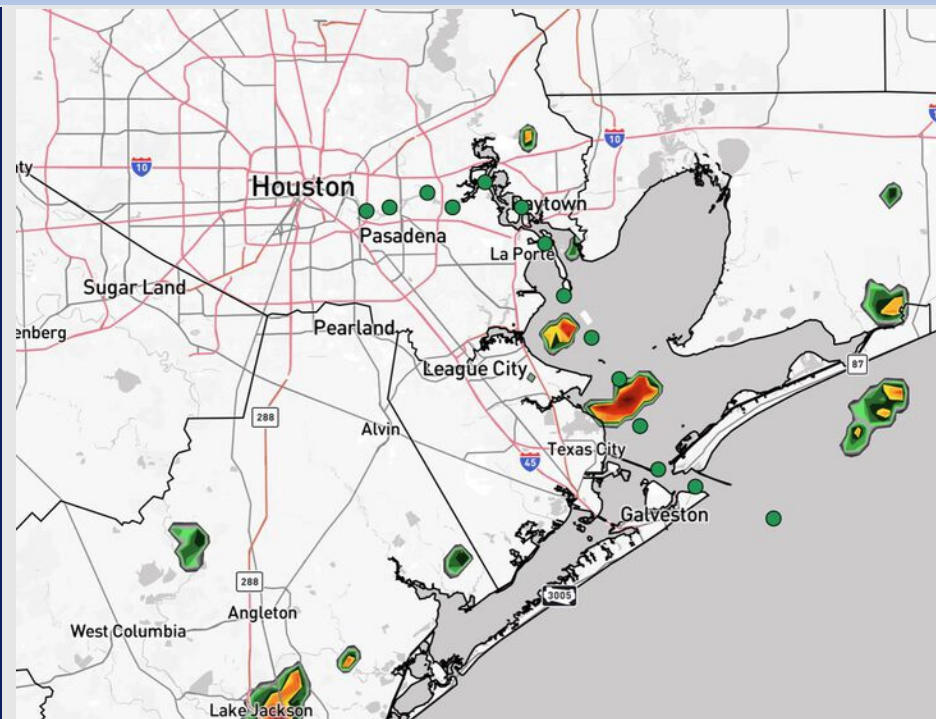
Updated: 1:45 PM CT

Thursday, August 28, 2025

Forecaster: Hope Kleitsch

## Weather Headlines

- Isolated to scattered shower/storm chances in play over the next 72 hours.
- A few non-thunderstorm wind gusts up to 20 kts will be possible the rest of the evening.
- No tropical activity is favored across the next 7-10 days.



Current Radar: 1:45 PM CT

As always, please do not hesitate to reach out to us with any forecast questions at [\(317\)-560-8122](tel:317-560-8122). Press 1 for forecast questions.

You can also access real-time forecast updates and 24/7 meteorological chat assistance on your [Clarity](#) app. Click [here](#) for login assistance.

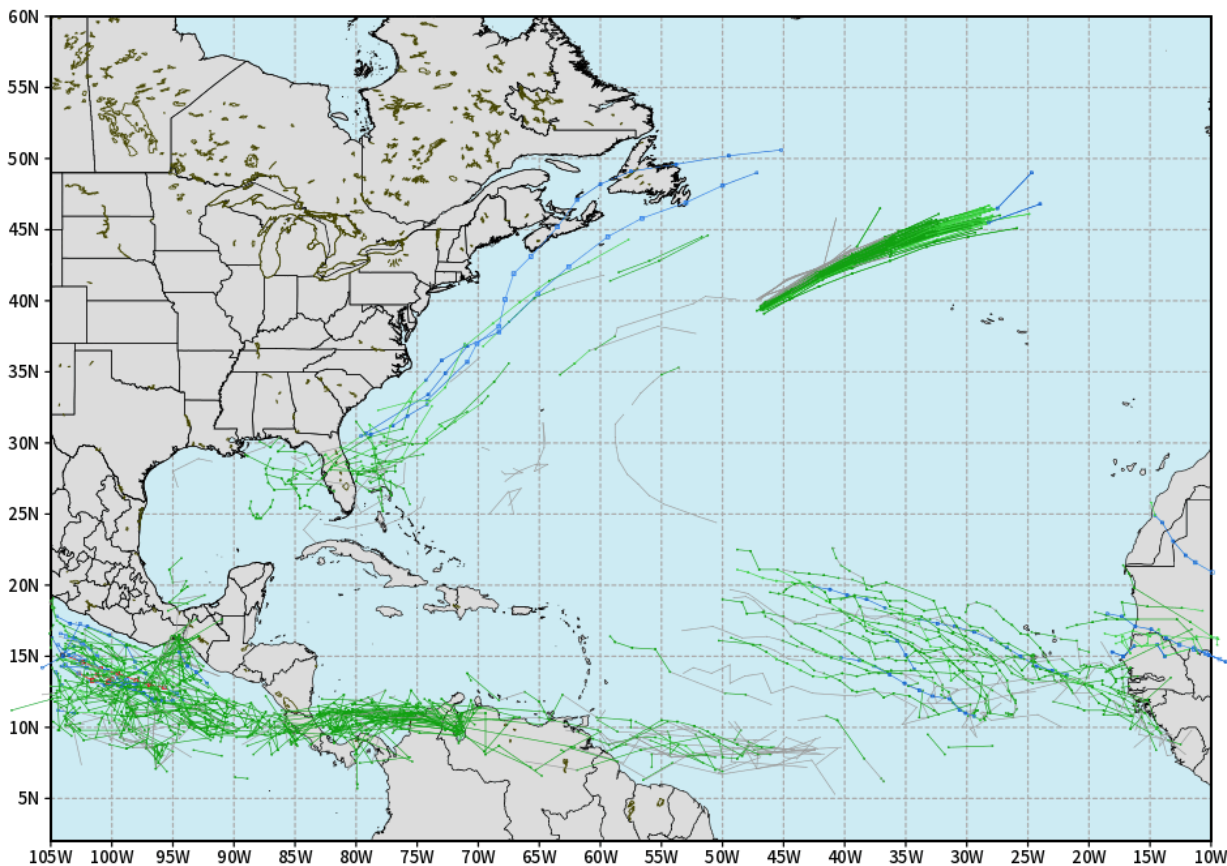


# Houston Pilots Tropical Update

## 10-Day Tropical Outlook

ECMWF ATLANTIC EPS Cyclone Locations --> Next [10-days]  
INIT: 00Z28AUG2025 --> UNTIL 00Z07SEP2025

o-o ENSEMBLE MEAN  
o-o 1000 - 1010 hPa  
o-o 980 - 999 hPa  
o-o 960 - 979 hPa  
o-o 950 - 959 hPa  
o-o < 950 hPa



[weathermodels.com](http://weathermodels.com)

No tropical development favored in the Gulf over the next 7-10 days.

Let's keep an eye for a potential uptick the second week of September.

# Houston Pilots Visibility Chart (miles)



Visibility	Thu 3 pm	Thu 4 pm	Thu 5 pm	Thu 6 pm	Thu 7 pm	Thu 8 pm	Thu 9 pm	Thu 10 pm	Thu 11 pm	Fri 12 am	Fri 1 am	Fri 2 am	Fri 3 am	Fri 4 am	Fri 5 am	Fri 6 am	Fri 7 am	Fri 8 am	Fri 9 am	Fri 10 am	Fri 11 am	Fri 12 pm	Fri 1 pm	Fri 2 pm
Houston Pilots N - 610 Bridge	10	10	10	10	10	10	10	10	10	10	10	10	10	10	10	10	10	10	10	10	10	10	10	10
Houston Pilots M - Kinder 1	10	10	10	10	10	10	10	10	10	10	10	10	10	10	10	10	10	10	10	10	10	10	10	10
Houston Pilots L - Greens Bayou	10	10	10	10	10	10	10	10	10	10	10	10	10	10	10	10	10	10	10	10	10	10	10	10
Houston Pilots K - Shell Crude	10	10	10	10	10	10	10	10	10	10	10	10	10	10	10	10	10	10	10	10	10	10	10	10
Houston Pilots J - Lynchburg Ferries	10	10	10	10	10	10	10	10	10	10	10	10	10	10	10	10	10	10	10	10	10	10	10	10
Houston Pilots I - Exxon 3	10	10	10	10	10	10	10	10	10	10	10	10	10	10	10	10	10	10	10	10	10	10	10	10
Houston Pilots H - Morgans Point	10	10	10	10	10	10	10	10	10	10	10	10	10	10	10	10	10	10	10	10	10	10	10	10
Houston Pilots G - 75/76	10	10	10	10	10	10	10	10	10	10	10	10	10	10	10	10	10	10	10	10	10	10	10	10
Houston Pilots F - 63/64	10	10	10	10	10	10	10	10	10	10	10	10	10	10	10	10	10	10	10	10	10	10	10	10
Houston Pilots E - 51/52	10	10	10	10	10	10	10	10	10	10	10	10	10	10	10	10	10	10	10	10	10	10	10	10
Houston Pilots D - 37/38	10	10	10	10	10	10	10	10	10	10	10	10	10	10	10	10	10	10	10	10	10	10	10	10
Houston Pilots C - 25/26	10	10	10	10	10	10	10	10	10	10	10	10	10	10	10	10	10	10	10	10	10	10	10	10
Houston Pilots B - 11/12	10	10	10	10	10	10	10	10	10	10	10	10	10	10	10	10	10	10	10	10	10	10	10	10
Houston Pilots A - 1 & 2 Bravo	10	10	10	10	10	10	10	10	10	10	10	10	10	10	10	10	10	10	10	10	10	10	10	10

**NOTE:** This is automated data that may/may not agree with the official BAM thinking that's found on the daily slides or special visibility report slides. This data should be used as a guide only

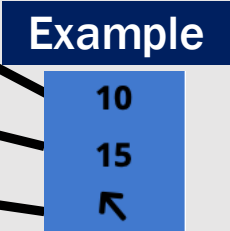
# Houston Pilots Wind Chart



## Forecast Confidence



Sustained Wind 10 Knots  
Gusts 15 Knots  
Wind from the SE



Wind	Thu 3 pm	Thu 4 pm	Thu 5 pm	Thu 6 pm	Thu 7 pm	Thu 8 pm	Thu 9 pm	Thu 10 pm	Thu 11 pm	Fri 12 am	Fri 1 am	Fri 2 am	Fri 3 am	Fri 4 am	Fri 5 am	Fri 6 am	Fri 7 am	Fri 8 am	Fri 9 am	Fri 10 am	Fri 11 am	Fri 12 pm	Fri 1 pm	Fri 2 pm
Houston Pilots N - 610 Bridge	6 13 ↕	6 13 ↕	6 14 ↕	7 15 ↕	8 15 ↕	8 15 ↕	7 14 ↕	7 13 ↕	6 13 ↕	6 13 ↕	6 12 ↕	6 10 ↕	6 10 ↕	5 10 ↕	5 10 ↕	5 9 ↕	3 8 ↕	3 8 ↕	3 8 ↕	5 9 ↕	6 10 ↕	6 10 ↕	6 12 ↕	6 10 ↕
Houston Pilots M - Kinder 1	6 12 ↕	6 13 ↕	7 14 ↕	7 15 ↕	8 15 ↕	8 15 ↕	7 14 ↕	7 13 ↕	6 12 ↕	6 12 ↕	6 12 ↕	6 10 ↕	5 10 ↕	5 10 ↕	5 10 ↕	5 9 ↕	3 8 ↕	3 8 ↕	3 8 ↕	5 9 ↕	6 10 ↕	6 10 ↕	6 12 ↕	6 10 ↕
Houston Pilots L - Greens Bayou	6 12 ↕	6 13 ↕	7 14 ↕	7 15 ↕	8 15 ↕	8 15 ↕	7 14 ↕	6 13 ↕	6 12 ↕	6 12 ↕	6 10 ↕	6 10 ↕	5 9 ↕	5 9 ↕	5 9 ↕	3 8 ↕	3 8 ↕	3 8 ↕	3 8 ↕	5 10 ↕	6 10 ↕	6 12 ↕	6 10 ↕	6 10 ↕
Houston Pilots K - Shell Crude	6 13 ↕	6 13 ↕	7 14 ↕	8 15 ↕	8 15 ↕	8 15 ↕	7 14 ↕	6 13 ↕	6 12 ↕	6 12 ↕	6 10 ↕	6 10 ↕	5 10 ↕	5 10 ↕	5 9 ↕	3 8 ↕	3 8 ↕	3 8 ↕	3 8 ↕	5 9 ↕	6 10 ↕	6 12 ↕	6 10 ↕	6 10 ↕
Houston Pilots J - Lynchburg Ferries	6 13 ↕	6 13 ↕	7 14 ↕	7 15 ↕	8 15 ↕	8 15 ↕	7 14 ↕	6 13 ↕	6 12 ↕	6 12 ↕	5 10 ↕	5 10 ↕	3 9 ↕	3 9 ↕	3 9 ↕	3 8 ↕	3 8 ↕	3 7 ↕	3 7 ↕	5 8 ↕	6 10 ↕	6 12 ↕	6 10 ↕	6 10 ↕
Houston Pilots I - Exxon 3	8 13 ↕	9 15 ↕	10 16 ↕	10 16 ↕	12 16 ↕	12 16 ↕	12 16 ↕	10 16 ↕	10 15 ↕	10 15 ↕	10 15 ↕	10 15 ↕	10 14 ↕	9 14 ↕	9 13 ↕	8 13 ↕	8 12 ↕	8 10 ↕	7 10 ↕	7 10 ↕	7 10 ↕	7 12 ↕	7 13 ↕	8 13 ↕
Houston Pilots H - Morgans Point	8 13 ↕	9 15 ↕	10 16 ↕	10 16 ↕	12 16 ↕	12 16 ↕	12 16 ↕	10 15 ↕	10 15 ↕	10 15 ↕	10 15 ↕	10 15 ↕	10 14 ↕	9 14 ↕	9 14 ↕	8 13 ↕	8 12 ↕	7 10 ↕	7 10 ↕	7 10 ↕	7 10 ↕	7 12 ↕	7 13 ↕	8 13 ↕
Houston Pilots G - 75/76	8 13 ↕	9 15 ↕	10 16 ↕	10 16 ↕	12 17 ↕	12 17 ↕	12 17 ↕	12 16 ↕	12 16 ↕	12 16 ↕	12 16 ↕	12 16 ↕	10 16 ↕	10 15 ↕	10 15 ↕	10 15 ↕	9 14 ↕	8 13 ↕	8 13 ↕	8 12 ↕	7 12 ↕	7 12 ↕	6 13 ↕	7 13 ↕
Houston Pilots F - 63/64	7 13 ↕	8 15 ↕	10 16 ↕	10 16 ↕	10 16 ↕	12 16 ↕	12 16 ↕	12 16 ↕	10 16 ↕	10 16 ↕	10 16 ↕	10 16 ↕	10 16 ↕	10 15 ↕	10 15 ↕	10 15 ↕	9 14 ↕	9 13 ↕	8 13 ↕	8 12 ↕	7 12 ↕	6 12 ↕	6 13 ↕	6 12 ↕
Houston Pilots E - 51/52	7 13 ↕	8 14 ↕	9 15 ↕	10 16 ↕	10 16 ↕	12 16 ↕	12 16 ↕	12 16 ↕	10 16 ↕	10 16 ↕	10 16 ↕	10 17 ↕	10 16 ↕	10 15 ↕	10 15 ↕	10 15 ↕	10 15 ↕	9 14 ↕	8 13 ↕	8 13 ↕	8 13 ↕	7 12 ↕	7 13 ↕	7 13 ↕
Houston Pilots D - 37/38	7 13 ↕	8 14 ↕	9 15 ↕	10 16 ↕	10 16 ↕	12 16 ↕	12 16 ↕	10 16 ↕	10 16 ↕	10 16 ↕	10 16 ↕	10 17 ↕	10 16 ↕	10 16 ↕	10 15 ↕	10 15 ↕	10 15 ↕	10 15 ↕	9 14 ↕	8 13 ↕	8 13 ↕	8 12 ↕	7 13 ↕	7 13 ↕
Houston Pilots C - 25/26	7 13 ↕	8 13 ↕	8 14 ↕	9 15 ↕	10 15 ↕	10 15 ↕	10 15 ↕	10 15 ↕	10 15 ↕	10 15 ↕	10 16 ↕	10 16 ↕	10 16 ↕	10 15 ↕	10 15 ↕	10 15 ↕	10 15 ↕	10 15 ↕	9 14 ↕	8 14 ↕	8 13 ↕	8 13 ↕	8 13 ↕	8 13 ↕
Houston Pilots B - 11/12	7 13 ↕	8 13 ↕	8 14 ↕	8 15 ↕	9 15 ↕	9 15 ↕	9 15 ↕	9 15 ↕	8 15 ↕	9 15 ↕	9 16 ↕	9 16 ↕	9 16 ↕	9 15 ↕	9 15 ↕	9 15 ↕	8 15 ↕	8 15 ↕	8 14 ↕	8 14 ↕	8 13 ↕	8 13 ↕	8 13 ↕	8 13 ↕
Houston Pilots A - 1 & 2 Bravo	6 13 ↕	7 13 ↕	8 14 ↕	8 15 ↕	9 15 ↕	10 15 ↕	10 15 ↕	10 15 ↕	10 16 ↕	10 16 ↕	12 17 ↕	12 17 ↕	12 17 ↕	12 17 ↕	13 17 ↕	13 17 ↕	12 16 ↕	12 16 ↕	10 16 ↕	10 15 ↕	9 14 ↕	8 14 ↕	8 13 ↕	7 13 ↕

NOTE: This is automated data that may/may not agree with the official BAM thinking that's found on the daily slides.  
This data should be used as a guide only.



# Houston Pilots: THU. 8/28/2025

## Forecast Discussion

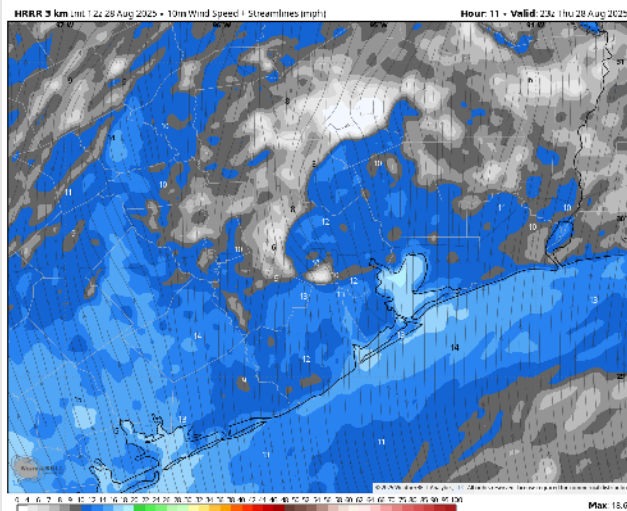
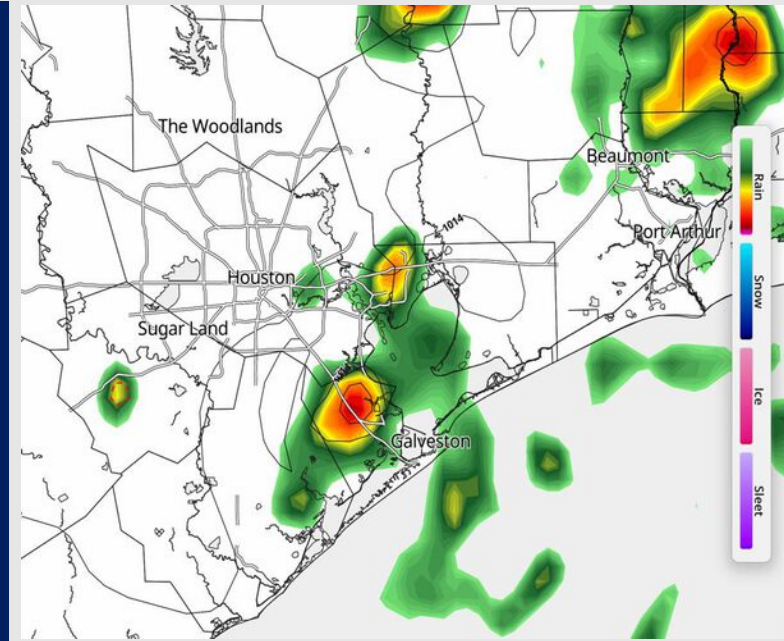
**Precip:** Scattered showers and storms will be possible for Stations S. of Morgan's Point through 5PM. Showers and storms are expected to be more hit/miss in nature for Stations N. of Morgan's Point through 5PM. **A few storms will be possible that will hold the risk for lightning and heavy downpours in addition to gusts of 20 – 30kts. This risk is mainly in play for Stations S. of Morgan's Point.**

**Wind:** Winds will be out of the S/SW for the rest of the day. **N of Morgan's Point:** Winds will be at 5 – 10 kts. **S of Morgan's Point:** Winds will be at 10 – 15 kts. **Non thunderstorm wind gusts may briefly reach 20 kts throughout the rest of the day.**

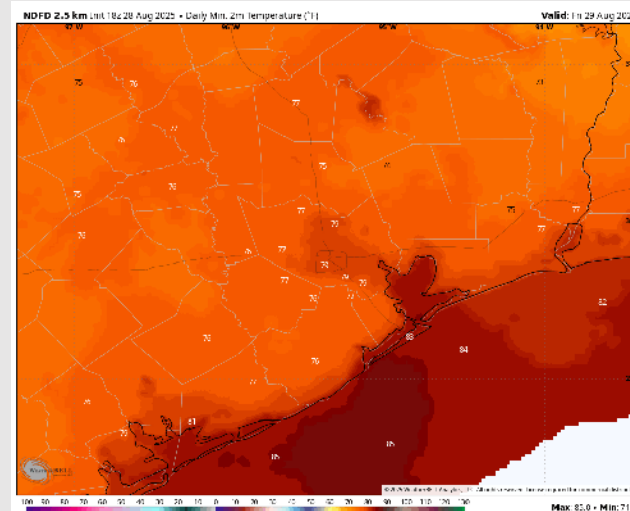
**Low Temps:** **N of Morgan's Point:** Upper 70s F. **S of Morgan's Point:** Low 80s F.

**Visibility:** No fog concerns today, however, visibilities may be reduced under heavier downpours, especially in the late AM.

## Precip Image: 3 PM CT



**Wind Speed:**  
6 PM CT



**Low Temps**  
**Today**

# Houston Pilots: FRI. 8/29/2025

## Forecast Discussion

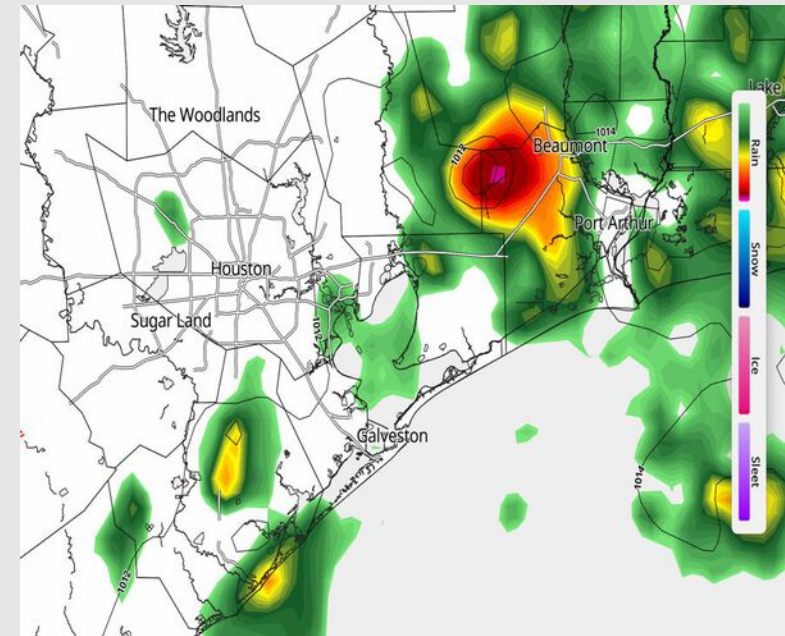
**Precip:** Isolated showers/storms possible from 1 – 6 PM for all Stations. Scattered storms possible from 6 - 11PM for all Stations. **A few storms will be possible that will hold the risk for lightning, heavy downpours, and a few gusts of 25+ kts.**

**Wind:** Winds will generally be out of the SW, becoming variable at times. **N of Morgan's Point:** Winds will be at 3 – 8 kts. **S of Morgan's Point:** Winds will be at 8 – 13 kts, with speeds increasing to 11 – 16 kts after 4PM.

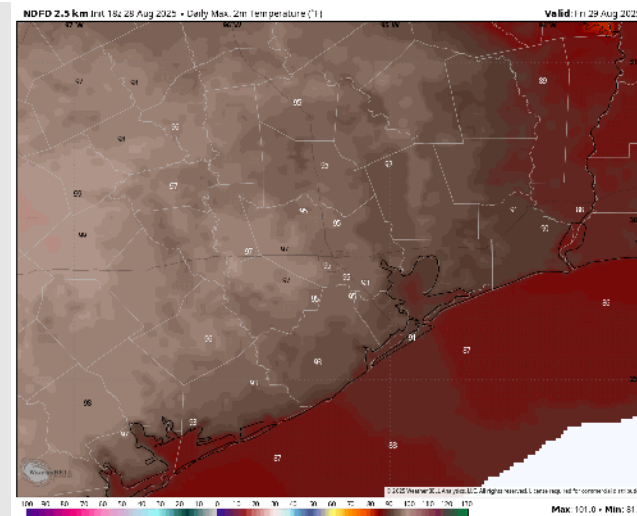
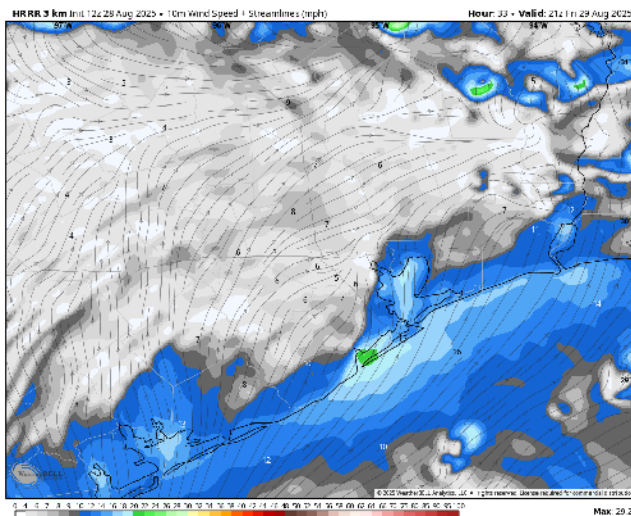
**High Temps:** **N of Morgan's Point:** Mid 90s F. **S of Morgan's Point:** Low 90s F.

**Visibility:** No fog concerns Friday, however, visibilities may be reduced under heavier downpours.

## Precip Image: 4 PM CT



**Wind Speed:**  
4 PM CT



**High Temps**  
**Friday**

# Houston Pilots: SAT. 8/30/2025

## Forecast Discussion

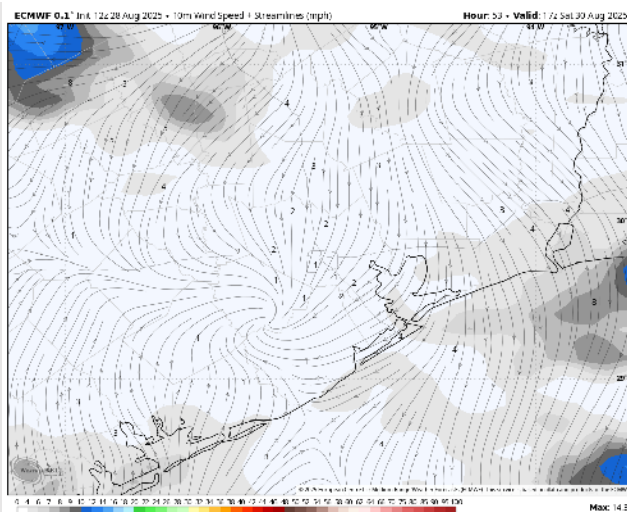
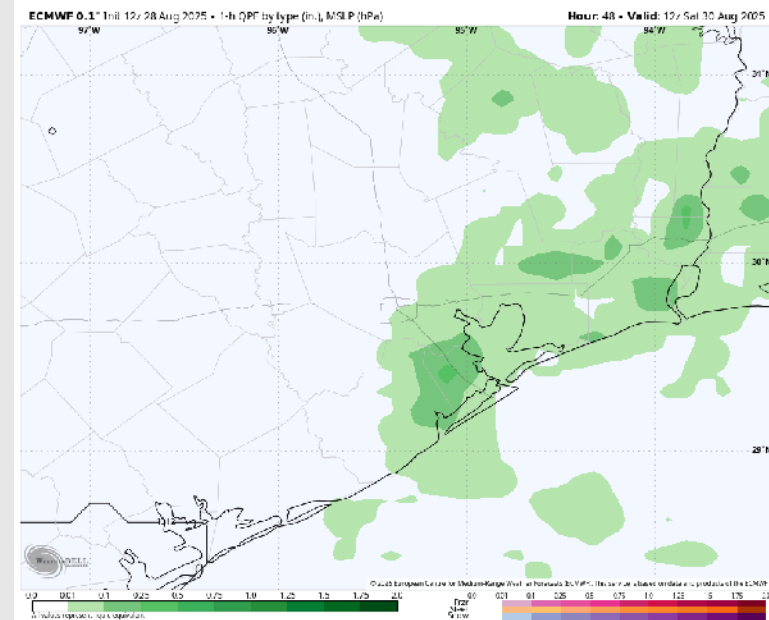
**Precip:** Scattered showers possible from 1AM – 7 PM. The best chance for activity is expected to be 3AM to 9AM and 4PM to 7PM. **Storms will hold risks for lightning and heavy downpours.**

**Wind:** Winds will be variable throughout Saturday, with a tendency to blow from the E/NE. **N of Morgan's Point:** Winds will be at 2 – 7 kts. **S of Morgan's Point:** Winds will be at to 3 – 8 kts.

**High Temps:** **N of Morgan's Point:** Low 90s F. **S of Morgan's Point:** Near 90 F.

**Visibility:** No fog concerns Saturday, however, visibilities can be briefly reduced under heavy downpours.

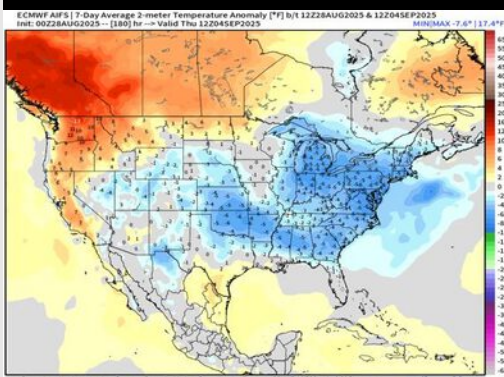
## Precip Image: 7 AM CT



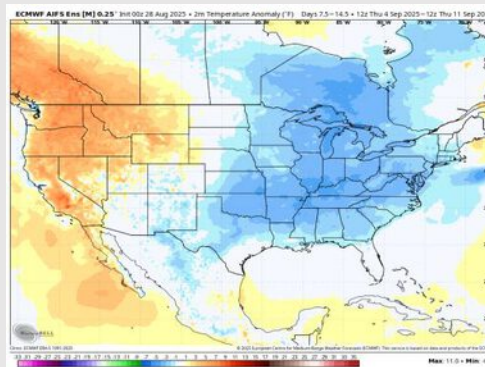


# Houston Pilots: 8/28/25

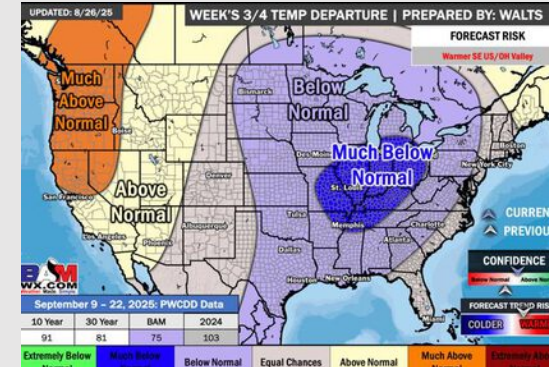
## Next 7 Day Temperature Departure



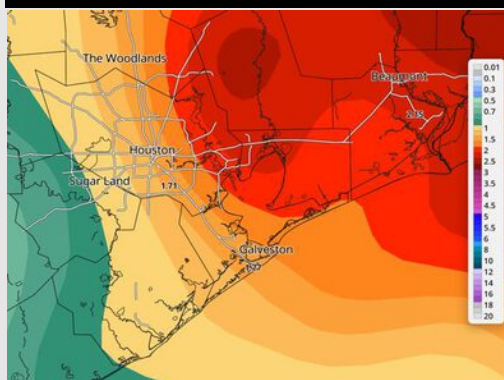
## 8-14 Day Temperature Departure



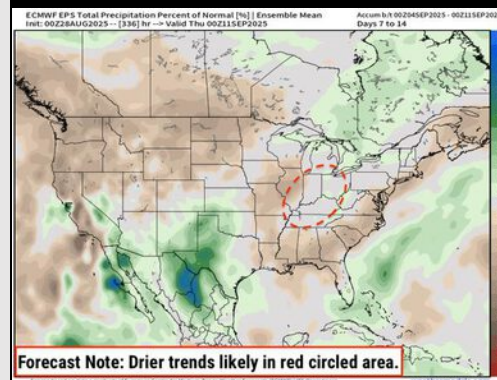
## 15-30 Day Temperature Departure



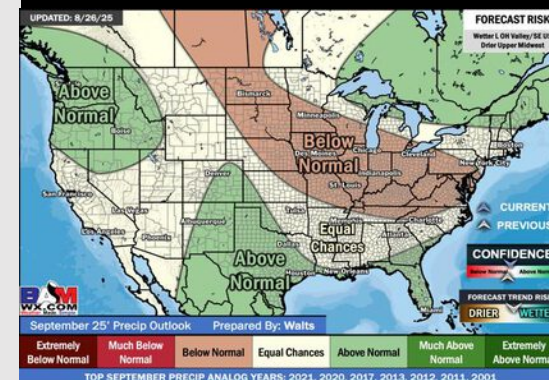
## Next 7 Day Total Precipitation



## 8-14 Day % of Average Precip.



## 15-30 Day % of Average Precip.



- Temps are expected to be near normal for the next 7 days with scattered rain chances bringing a few downpours throughout the week.
- Near normal temperatures and near normal rain chances are favored for days 8 – 14.
- Below normal temperatures are favored for mid to late September with above normal rainfall chances.