

Houston Pilots Forecast Package



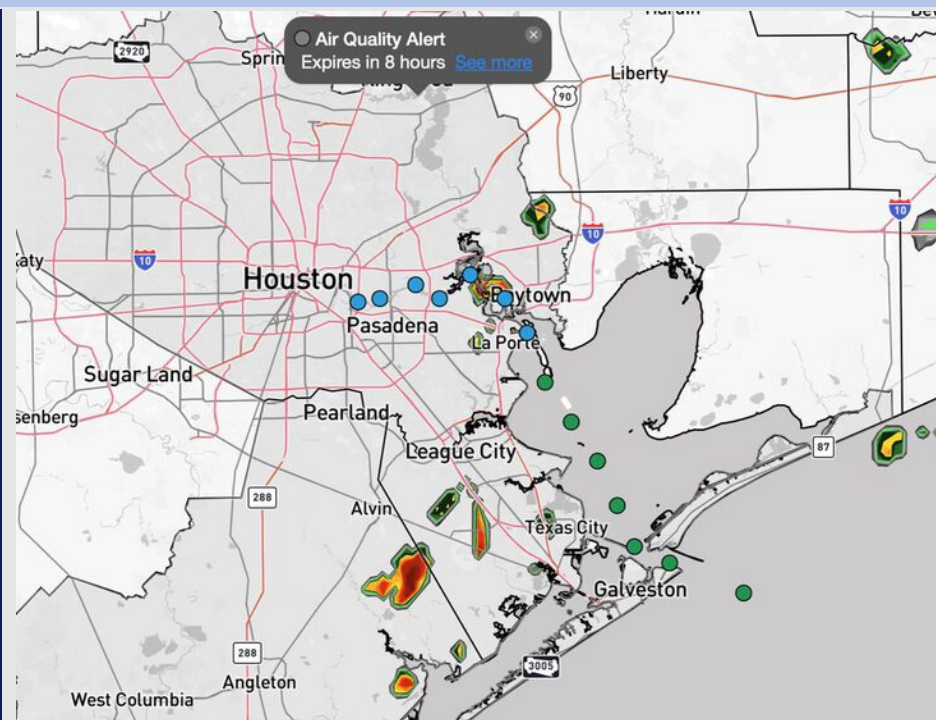
Updated: 1:00 PM CT

Tuesday, August 26, 2025

Forecaster: Hope Kleitsch

Weather Headlines

- Isolated to scattered rain chances in play over the next 72 hours. A few storms will be possible on Wednesday.
- A few non-thunderstorm wind gusts up to 20 kts will be possible WED and THU PM.
- No tropical activity is favored across the next 10 days.



Current Radar: 1:00 PM CT

As always, please do not hesitate to reach out to us with any forecast questions at **(317)-560-8122**. Press **1** for forecast questions.

You can also access real-time forecast updates and 24/7 meteorological chat assistance on your **Clarity** app. Click [here](#) for login assistance.

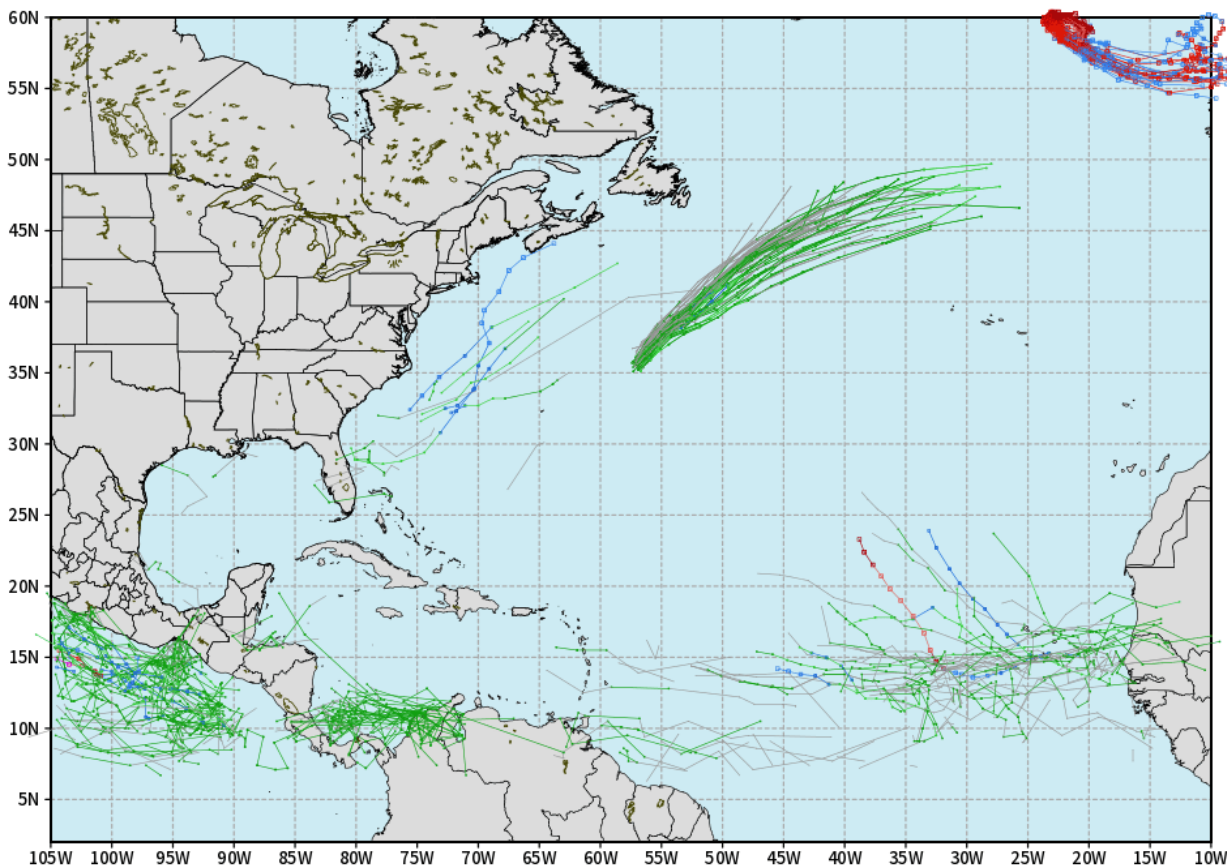


Houston Pilots Tropical Update

10-Day Tropical Outlook

ECMWF ATLANTIC EPS Cyclone Locations --> Next [10-days]
INIT: 00Z26AUG2025 --> UNTIL 00Z05SEP2025

o-o ENSEMBLE MEAN
o-o 1000 - 1010 hPa
o-o 980 - 999 hPa
o-o 960 - 979 hPa
o-o 950 - 959 hPa
o-o < 950 hPa



weathermodels.com

No tropical
development
favored in the
Gulf over the
next 10 days.

Houston Pilots Visibility Chart (miles)



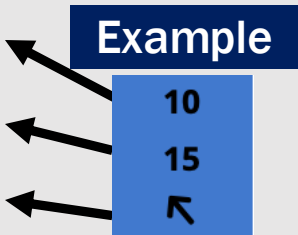
Visibility	Tue 2 pm	Tue 3 pm	Tue 4 pm	Tue 5 pm	Tue 6 pm	Tue 7 pm	Tue 8 pm	Tue 9 pm	Tue 10 pm	Tue 11 pm	Wed 12 am	Wed 1 am	Wed 2 am	Wed 3 am	Wed 4 am	Wed 5 am	Wed 6 am	Wed 7 am	Wed 8 am	Wed 9 am	Wed 10 am	Wed 11 am	Wed 12 pm	Wed 1 pm
Houston Pilots N - 610 Bridge	10	10	10	10	10	10	10	10	10	10	10	10	10	10	10	10	10	10	10	10	10	10	10	10
Houston Pilots M - Kinder 1	10	10	10	10	10	10	10	10	10	10	10	10	10	10	10	10	10	10	10	10	10	10	10	10
Houston Pilots L - Greens Bayou	10	10	10	10	10	10	10	10	10	10	10	10	10	10	10	10	10	10	10	10	10	10	10	10
Houston Pilots K - Shell Crude	10	10	10	10	10	10	10	10	10	10	10	10	10	10	10	10	10	10	10	10	10	10	10	10
Houston Pilots J - Lynchburg Ferries	10	10	10	10	10	10	10	10	10	10	10	10	10	10	10	10	10	10	10	10	10	10	10	10
Houston Pilots I - Exxon 3	10	10	10	10	10	10	10	10	10	10	10	10	10	10	10	10	10	10	10	10	10	10	10	10
Houston Pilots H - Morgans Point	10	10	10	10	10	10	10	10	10	10	10	10	10	10	10	10	10	10	10	10	10	10	10	10
Houston Pilots G - 75/76	10	10	10	10	10	10	10	10	10	10	10	10	10	10	10	10	10	10	10	10	10	10	10	10
Houston Pilots F - 63/64	10	10	10	10	10	10	10	10	10	10	10	10	10	10	10	10	10	10	10	10	10	10	10	10
Houston Pilots E - 51/52	10	10	10	10	10	10	10	10	10	10	10	10	10	10	10	10	10	10	10	10	10	10	10	10
Houston Pilots D - 37/38	10	10	10	10	10	10	10	10	10	10	10	10	10	10	10	10	10	10	10	10	10	10	10	10
Houston Pilots C - 25/26	10	10	10	10	10	10	10	10	10	10	10	10	10	10	10	10	10	10	10	10	10	10	10	10
Houston Pilots B - 11/12	10	10	10	10	10	10	10	10	10	10	10	10	10	10	10	10	10	10	10	10	10	10	10	10
Houston Pilots A - 1 & 2 Bravo	10	10	10	10	10	10	10	10	10	10	10	10	10	10	10	10	10	10	10	10	10	10	10	10

NOTE: This is automated data that may/may not agree with the official BAM thinking that's found on the daily slides or special visibility report slides. This data should be used as a guide only

Houston Pilots Wind Chart



Sustained Wind 10 Knots
Gusts 15 Knots
Wind from the SE



Wind	Tue 2 pm	Tue 3 pm	Tue 4 pm	Tue 5 pm	Tue 6 pm	Tue 7 pm	Tue 8 pm	Tue 9 pm	Tue 10 pm	Tue 11 pm	Wed 12 am	Wed 1 am	Wed 2 am	Wed 3 am	Wed 4 am	Wed 5 am	Wed 6 am	Wed 7 am	Wed 8 am	Wed 9 am	Wed 10 am	Wed 11 am	Wed 12 pm	Wed 1 pm
Houston Pilots N - 610 Bridge	6 13 ←	7 13 ←	7 15 ←	8 15 ←	8 16 ←	8 15 ←	8 15 ←	6 13 ←	6 10 ←	3 8 ←	3 7 ←	2 6 ←	2 5 ←	1 5 ←	2 5 ←	2 5 ←	2 6 ←	3 7 ←	5 8 ←	5 9 ←	6 10 ←	6 12 ←	7 14 ←	7 15 ←
Houston Pilots M - Kinder 1	6 13 ←	7 13 ←	7 15 ←	8 15 ←	8 16 ←	8 15 ←	8 15 ←	6 13 ←	6 10 ←	3 8 ←	3 7 ←	2 6 ←	2 5 ←	1 5 ←	2 5 ←	2 5 ←	3 6 ←	3 7 ←	5 8 ←	5 9 ←	6 10 ←	6 12 ←	7 14 ←	8 15 ←
Houston Pilots L - Greens Bayou	6 13 ←	7 13 ←	7 15 ←	8 15 ←	8 15 ←	8 15 ←	8 14 ←	6 13 ←	5 10 ←	3 8 ←	3 6 ←	2 5 ←	2 5 ←	2 5 ←	2 5 ←	2 5 ←	3 6 ←	3 7 ←	5 8 ←	5 9 ←	6 10 ←	6 12 ←	7 14 ←	8 15 ←
Houston Pilots K - Shell Crude	6 13 ←	7 13 ←	7 15 ←	8 15 ←	8 15 ←	8 15 ←	8 14 ←	6 13 ←	5 10 ←	3 8 ←	3 7 ←	2 6 ←	2 5 ←	2 5 ←	2 5 ←	2 5 ←	3 6 ←	3 7 ←	5 8 ←	5 9 ←	6 10 ←	6 12 ←	7 14 ←	8 15 ←
Houston Pilots J - Lynchburg Ferries	6 13 ←	7 13 ←	7 14 ←	7 14 ←	7 15 ←	7 15 ←	7 13 ←	6 12 ←	5 9 ←	3 8 ←	2 6 ←	2 5 ←	1 5 ←	1 5 ←	1 5 ←	2 5 ←	2 6 ←	3 7 ←	3 8 ←	5 9 ←	6 10 ←	6 12 ←	7 14 ←	7 15 ←
Houston Pilots I - Exxon 3	8 14 ←	9 15 ←	10 15 ←	10 16 ←	10 16 ←	10 16 ←	10 15 ←	10 15 ←	9 13 ←	8 12 ←	7 10 ←	6 9 ←	6 8 ←	6 8 ←	6 8 ←	6 8 ←	6 9 ←	7 10 ←	8 12 ←	8 13 ←	8 13 ←	8 13 ←	9 15 ←	9 15 ←
Houston Pilots H - Morgans Point	8 14 ←	9 15 ←	10 15 ←	10 16 ←	10 16 ←	10 16 ←	10 15 ←	10 15 ←	9 13 ←	8 12 ←	7 10 ←	6 9 ←	6 8 ←	6 8 ←	6 8 ←	6 8 ←	6 9 ←	7 10 ←	8 12 ←	8 13 ←	8 13 ←	8 14 ←	9 15 ←	9 15 ←
Houston Pilots G - 75/76	8 13 ←	8 15 ←	10 16 ←	10 17 ←	10 17 ←	10 16 ←	12 16 ←	10 16 ←	10 15 ←	9 14 ←	8 13 ←	8 12 ←	7 10 ←	7 9 ←	6 9 ←	6 9 ←	7 10 ←	8 12 ←	9 13 ←	9 14 ←	9 14 ←	9 15 ←	9 15 ←	9 16 ←
Houston Pilots F - 63/64	8 13 ←	8 14 ←	9 15 ←	10 17 ←	10 17 ←	10 16 ←	10 16 ←	10 15 ←	10 14 ←	9 14 ←	8 13 ←	8 12 ←	8 10 ←	7 10 ←	7 9 ←	6 9 ←	7 10 ←	8 12 ←	8 13 ←	9 14 ←	9 14 ←	9 15 ←	9 15 ←	9 15 ←
Houston Pilots E - 51/52	8 14 ←	8 15 ←	9 15 ←	10 16 ←	10 17 ←	10 16 ←	10 16 ←	10 15 ←	10 15 ←	9 14 ←	8 13 ←	8 12 ←	8 12 ←	7 10 ←	7 9 ←	6 9 ←	7 10 ←	8 12 ←	8 13 ←	8 13 ←	9 14 ←	9 15 ←	9 15 ←	10 16 ←
Houston Pilots D - 37/38	8 13 ←	8 14 ←	9 15 ←	10 16 ←	10 16 ←	10 16 ←	10 16 ←	10 15 ←	10 14 ←	9 14 ←	8 13 ←	8 12 ←	8 12 ←	7 10 ←	7 9 ←	6 9 ←	7 10 ←	8 12 ←	8 13 ←	8 13 ←	9 14 ←	9 15 ←	9 15 ←	10 16 ←
Houston Pilots C - 25/26	8 13 ←	8 13 ←	8 15 ←	9 15 ←	9 16 ←	9 15 ←	9 15 ←	10 15 ←	9 14 ←	8 14 ←	8 13 ←	8 12 ←	7 12 ←	7 10 ←	6 9 ←	6 9 ←	6 9 ←	7 10 ←	8 12 ←	8 13 ←	8 14 ←	9 15 ←	9 15 ←	10 16 ←
Houston Pilots B - 11/12	8 13 ←	8 13 ←	8 15 ←	9 15 ←	9 15 ←	9 15 ←	9 15 ←	8 14 ←	8 14 ←	8 14 ←	7 13 ←	7 12 ←	6 12 ←	6 10 ←	6 10 ←	6 9 ←	6 9 ←	6 10 ←	7 12 ←	7 12 ←	8 13 ←	8 14 ←	9 15 ←	9 15 ←
Houston Pilots A - 1 & 2 Bravo	7 13 ←	7 13 ←	8 14 ←	8 15 ←	9 15 ←	9 15 ←	10 15 ←	10 15 ←	9 15 ←	9 15 ←	8 14 ←	8 14 ←	8 13 ←	8 12 ←	7 12 ←	7 10 ←	7 12 ←	8 12 ←	8 13 ←	8 13 ←	8 14 ←	9 15 ←	9 15 ←	10 16 ←

NOTE: This is automated data that may/may not agree with the official BAM thinking that's found on the daily slides.
This data should be used as a guide only.

Houston Pilots: TUE. 8/26/2025

Forecast Discussion

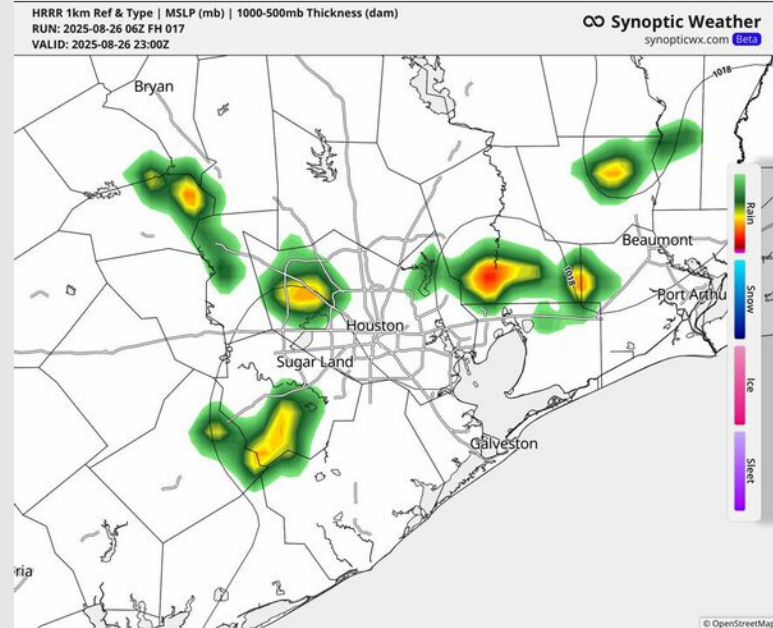
Precip: Isolated showers will be for Stations S. of Morgan's Point through 3PM before shifting to Stations N. of Morgan's Point through 10PM. **A few storms will be possible that will hold the risk for lightning, heavy downpours, and the isolated risk for 20 – 25 kts wind gusts.**

Wind: Winds will generally out of the SE for the remainder of the day. **N of Morgan's Point:** Winds will be at 3 – 8 kts. **S of Morgan's Point:** Winds will be at 5 – 10 kts.

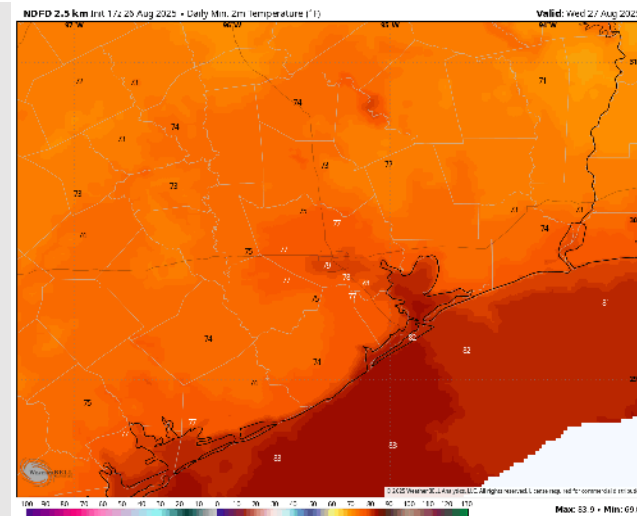
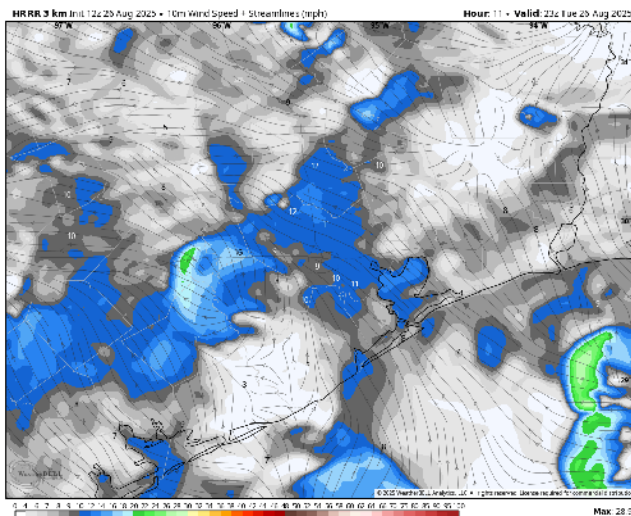
Low Temps: **N of Morgan's Point:** Upper 70s F. **S of Morgan's Point:** Low 80s F.

Visibility: No visibility concerns for today.

Precip Image: 6 PM CT



Wind Speed:
6 PM CT



Low Temps
WED AM

Houston Pilots: WED. 8/27/2025

Forecast Discussion

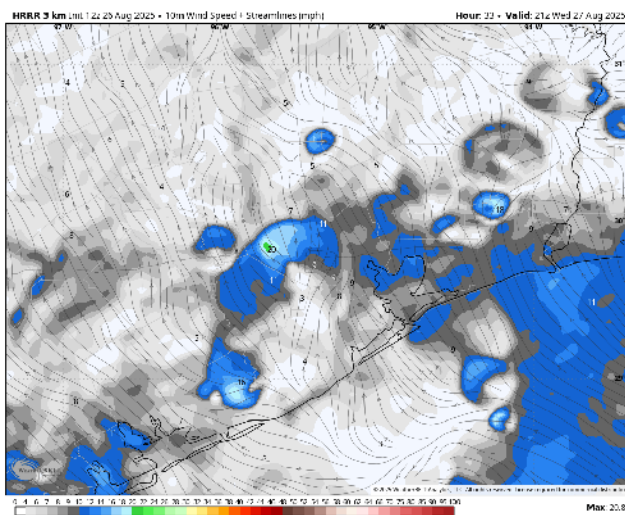
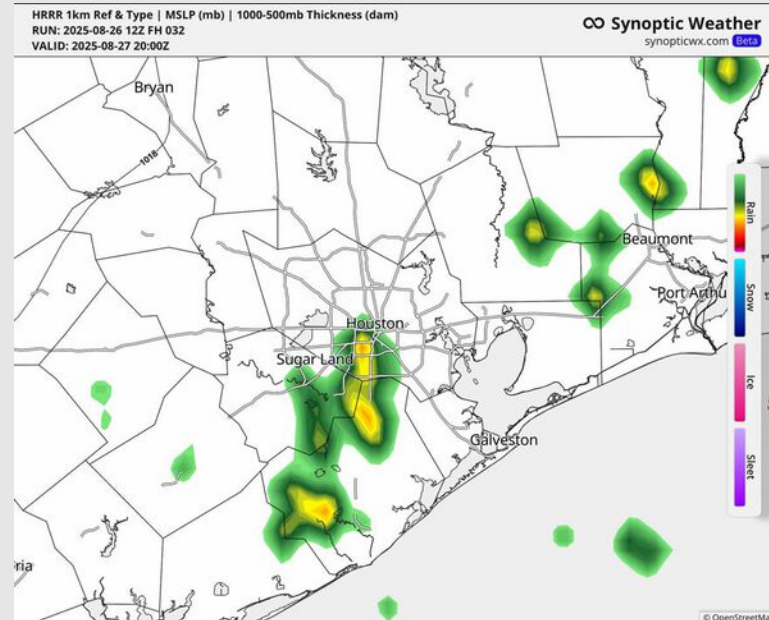
Precip: Isolated showers and storms will be possible for Stations S of Morgan's Point through 2PM, with coverage then becoming scattered for all Stations through 7 PM. **Storms will hold risks for 25+ kt winds, lightning and heavy downpours.**

Wind: Winds will be out of the E/SE throughout the day. **N of Morgan's Point:** Winds will be at 2 – 7 kts. **S of Morgan's Point:** Winds will be at 3 – 8 kts through 4 PM before increasing slightly to 5 – 10 kts. **A few non-thunderstorm gusts up to 20 kts will be possible for all Stations after 4PM.**

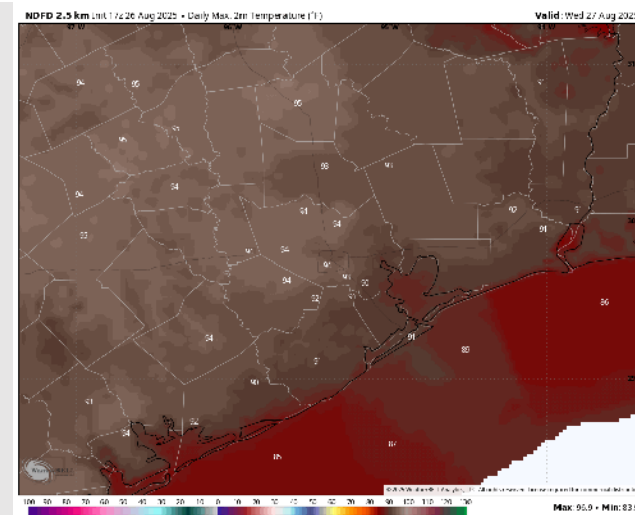
High Temps: **N of Morgan's Point:** Low 90s F. **S of Morgan's Point:** Upper 80s F.

Visibility: No fog concerns for Wednesday, however visibilities can be reduced under heavy downpours.

Precip Image: 3 PM CT



Wind Speed:
4 PM CT



High Temps
Wednesday

Houston Pilots: THU. 8/28/2025

Forecast Discussion

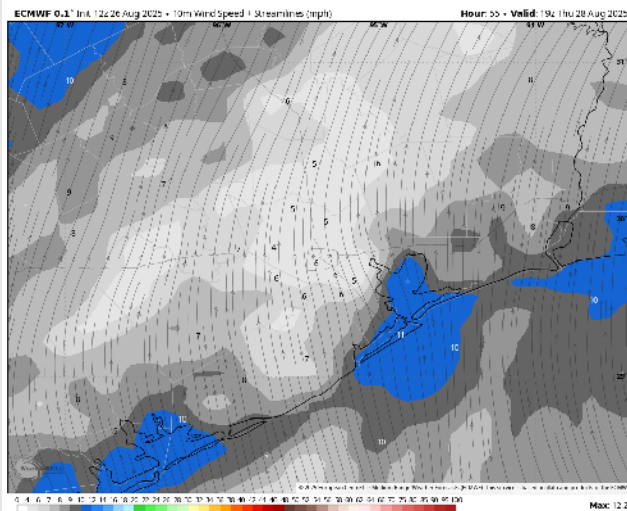
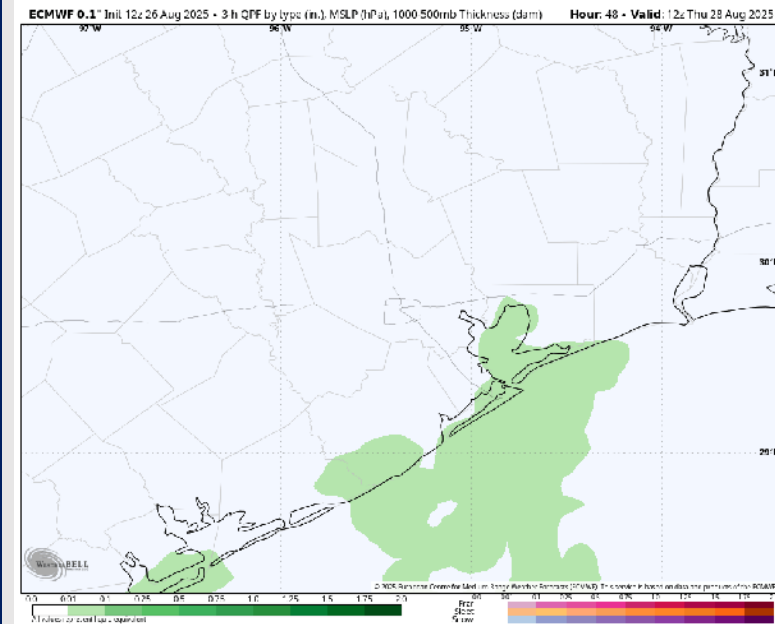
Precip: Isolated to scattered showers in play for all Stations from 12AM – 8 PM.

Wind: Winds will be out of the S/SE throughout Thursday. **N of Morgan's Point:** Winds will be at 2 – 7 kts. **S of Morgan's Point:** Winds will be at 8 – 13 kts. **Wind gusts may briefly reach 20 kts after 3 PM.**

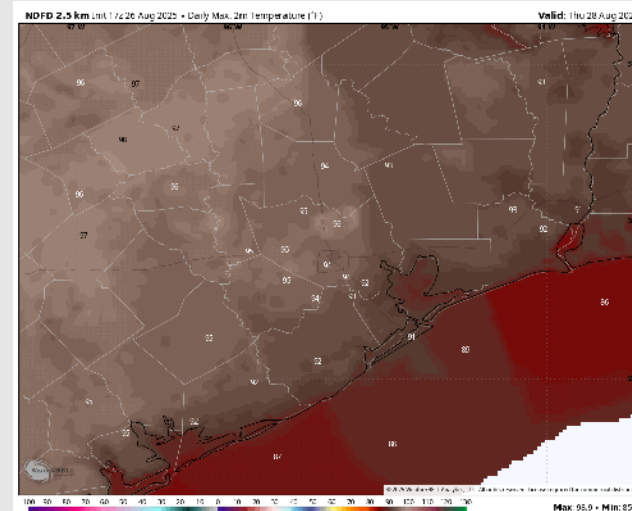
High Temps: **N of Morgan's Point:** Mid 90s F. **S of Morgan's Point:** Upper 80s F to low 90s F.

Visibility: No visibility concerns Thursday.

Precip Image: 4 PM CT



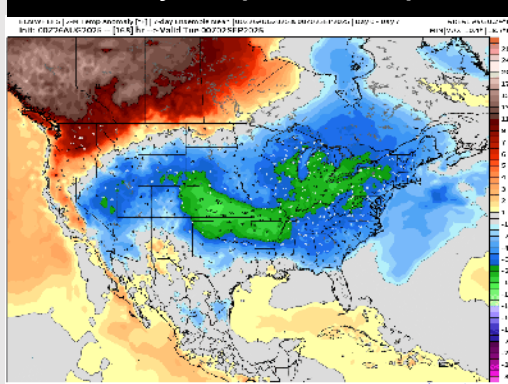
Wind Speed:
2 PM CT



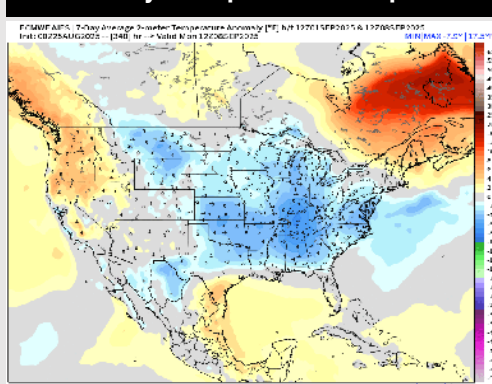
High Temps
Thursday

Houston Pilots: 8/26/25

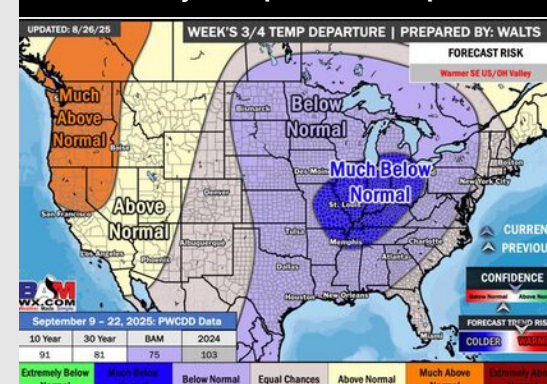
Next 7 Day Temperature Departure



8-14 Day Temperature Departure



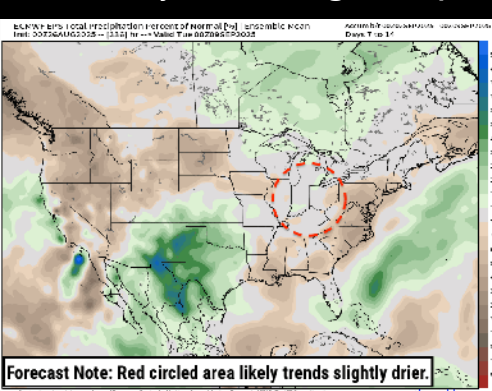
15-30 Day Temperature Departure



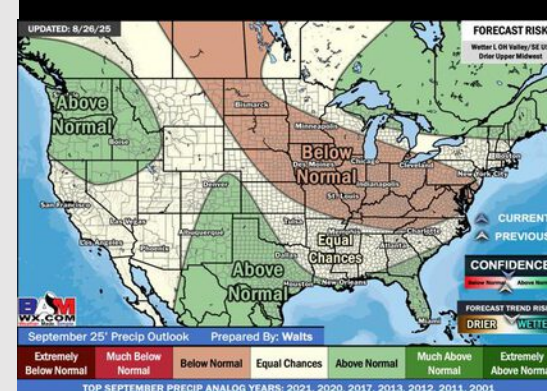
Next 7 Day Total Precipitation



8-14 Day % of Average Precip.



15-30 Day % of Average Precip.



- Temps are expected to be near normal for the next 7 days with scattered rain chances bringing a few downpours throughout the week.
- Above normal temperatures and near normal rain chances are favored for days 8 – 14.
- Below normal temperatures are favored for mid to late September with above normal rainfall chances.