

Houston Pilots Forecast Package



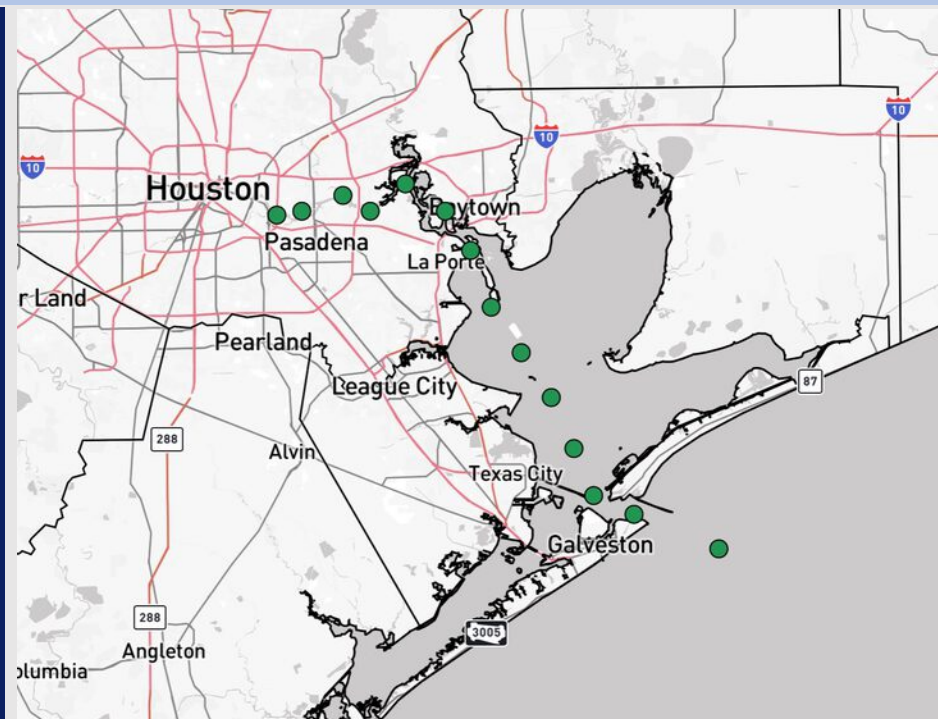
Updated: 9:15 PM CT

Saturday, August 23, 2025

Forecaster: Tyler Riggles

Weather Headlines

- Isolated to scattered shower and storm chances possible over the next 72 hours, with most chances in play for 25/26, 11/12 and the Boarding Station.
- We're watching for additional tropical development in the Atlantic. Additional details on the Tropical Outlook Slide.



Current Radar: 9:13 PM CT

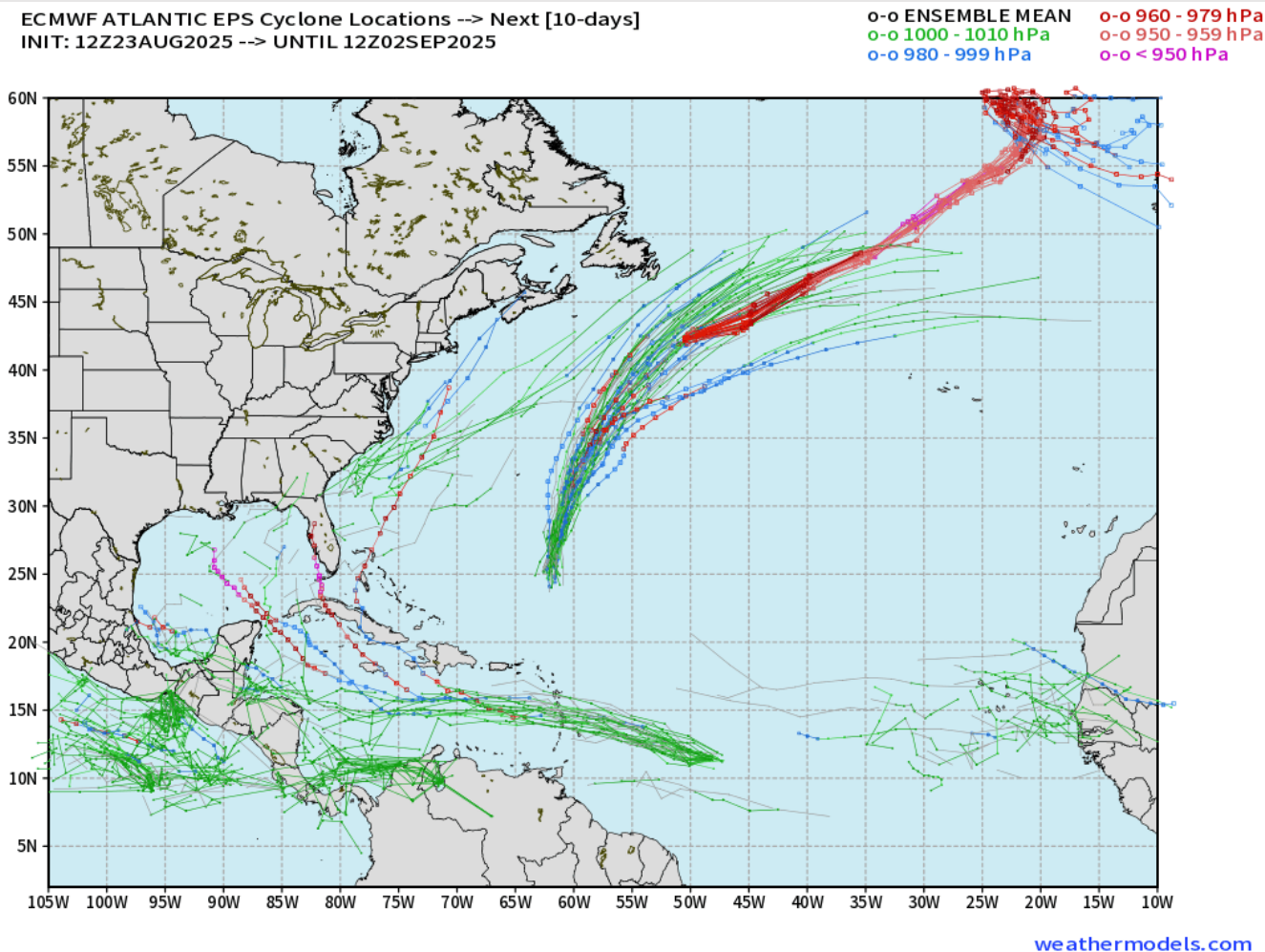
As always, please do not hesitate to reach out to us with any forecast questions at **(317)-560-8122**. Press **1** for forecast questions.

You can also access real-time forecast updates and 24/7 meteorological chat assistance on your **Clarity** app. Click [here](#) for login assistance.



Houston Pilots Tropical Update

10-Day Tropical Outlook



No tropical development favored in the Gulf over the next 10 days.

We're watching two additional areas of development in the Atlantic. Tropical Storm Fernand looks to steer out to the open Atlantic.

The other development ~27th - 29th is more uncertain with the track. We will continue to monitor the trend.

Houston Pilots Visibility Chart (miles)



Forecast Confidence

Above
Normal

Below
Normal

Visibility	Sat 11 pm	Sun 12 am	Sun 1 am	Sun 2 am	Sun 3 am	Sun 4 am	Sun 5 am	Sun 6 am	Sun 7 am	Sun 8 am	Sun 9 am	Sun 10 am	Sun 11 am	Sun 12 pm	Sun 1 pm	Sun 2 pm	Sun 3 pm	Sun 4 pm	Sun 5 pm	Sun 6 pm	Sun 7 pm	Sun 8 pm	Sun 9 pm	Sun 10 pm
Houston Pilots N - 610 Bridge	10	10	10	10	10	10	10	10	10	10	10	10	10	10	10	10	10	10	10	10	10	10	10	10
Houston Pilots M - Kinder 1	10	10	10	10	10	10	10	10	10	10	10	10	10	10	10	10	10	10	10	10	10	10	10	10
Houston Pilots L - Greens Bayou	10	10	10	10	10	10	10	10	10	10	10	10	10	10	10	10	10	10	10	10	10	10	10	10
Houston Pilots K - Shell Crude	10	10	10	10	10	10	10	10	10	10	10	10	10	10	10	10	10	10	10	10	10	10	10	10
Houston Pilots J - Lynchburg Ferries	10	10	10	10	10	10	10	10	10	9	10	10	10	10	10	10	10	10	10	10	10	10	10	10
Houston Pilots I - Exxon 3	10	10	10	10	10	10	10	10	10	9	10	10	10	10	10	10	10	10	10	10	10	10	10	10
Houston Pilots H - Morgans Point	10	10	10	10	10	10	10	10	10	10	10	10	10	10	10	10	10	10	10	10	10	10	10	10
Houston Pilots G - 75/76	10	10	10	10	10	10	10	10	10	10	10	10	10	10	10	10	10	10	10	10	10	10	10	10
Houston Pilots F - 63/64	10	10	10	10	10	10	10	10	10	10	10	10	10	10	10	10	10	10	10	10	10	10	10	10
Houston Pilots E - 51/52	10	10	10	10	10	10	10	10	10	10	10	10	10	10	10	10	10	10	10	10	10	10	10	10
Houston Pilots D - 37/38	10	10	10	10	10	10	10	10	10	10	10	10	10	10	10	10	10	10	10	10	10	10	10	10
Houston Pilots C - 25/26	10	10	10	10	10	10	10	10	10	10	10	10	10	10	10	10	10	10	10	10	10	10	10	10
Houston Pilots B - 11/12	10	10	10	10	10	10	10	10	10	10	10	10	10	10	10	10	10	10	10	10	10	10	10	10
Houston Pilots A - 1 & 2 Bravo	10	10	10	10	10	10	10	10	10	10	10	10	10	10	10	10	10	10	10	10	10	10	10	10

NOTE: This is automated data that may/may not agree with the official BAM thinking that’s found on the daily slides or special visibility report slides. This data should be used as a guide only

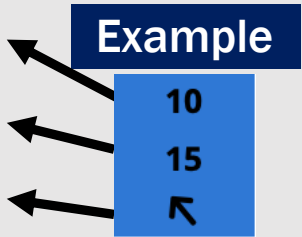
Houston Pilots Wind Chart



Sustained Wind 10 Knots

Gusts 15 Knots

Wind from the SE



Wind	Sat 11 pm	Sun 12 am	Sun 1 am	Sun 2 am	Sun 3 am	Sun 4 am	Sun 5 am	Sun 6 am	Sun 7 am	Sun 8 am	Sun 9 am	Sun 10 am	Sun 11 am	Sun 12 pm	Sun 1 pm	Sun 2 pm	Sun 3 pm	Sun 4 pm	Sun 5 pm	Sun 6 pm	Sun 7 pm	Sun 8 pm	Sun 9 pm	Sun 10 pm
Houston Pilots N - 610 Bridge	2 6 ↑	1 5 ↗	1 3 →	1 3 →	1 3 →	1 5 →	2 5 →	2 5 ↘	2 6 ↘	3 7 ↘	3 7 ↓	3 8 ↓	5 9 ↓	6 10 ↘	6 12 ↘	6 13 ↘	6 13 ↘	6 13 ↘	6 13 ↘	6 13 ↘	6 12 ↘	6 10 ↘	5 9 ↘	3 8 ↘
Houston Pilots M - Kinder 1	2 6 ↑	1 5 ↗	1 3 →	1 3 →	1 3 →	1 5 →	2 5 →	2 5 ↘	2 6 ↘	3 7 ↘	3 7 ↓	3 8 ↓	5 9 ↓	6 10 ↘	6 12 ↘	6 13 ↘	6 12 ↘	6 13 ↘	6 13 ↘	6 13 ↘	6 12 ↘	6 10 ↘	5 9 ↘	3 8 ↘
Houston Pilots L - Greens Bayou	2 5 ↑	1 3 ↗	1 3 →	1 3 →	1 3 →	1 3 →	2 5 →	2 5 ↘	2 5 ↘	3 6 ↘	3 7 ↓	3 7 ↓	5 9 ↓	6 10 ↘	6 12 ↘	6 13 ↘	6 12 ↘	6 13 ↘	6 12 ↘	6 12 ↘	6 12 ↘	6 10 ↘	3 9 ↘	3 8 ↘
Houston Pilots K - Shell Crude	2 5 ↑	1 5 ↗	1 3 →	1 3 →	1 3 →	1 3 →	2 5 →	2 5 ↘	2 6 ↘	3 7 ↘	3 7 ↓	3 7 ↓	5 9 ↓	6 9 ↘	6 12 ↘	6 13 ↘	6 12 ↘	6 13 ↘	6 13 ↘	6 12 ↘	6 12 ↘	6 9 ↘	3 9 ↘	3 8 ↘
Houston Pilots J - Lynchburg Ferries	1 5 ↑	1 3 ↗	1 3 →	1 2 →	1 3 →	1 3 →	1 5 →	2 5 ↘	2 5 ↘	3 6 ↘	3 6 ↓	3 7 ↓	3 8 ↓	6 9 ↘	6 12 ↘	6 13 ↘	6 12 ↘	6 13 ↘	6 12 ↘	6 12 ↘	5 12 ↘	5 9 ↘	3 9 ↘	3 8 ↘
Houston Pilots I - Exxon 3	5 7 ↑	3 6 ↗	3 6 →	3 6 →	3 6 →	5 7 →	5 7 →	6 8 ↘	6 8 ↘	7 9 ↘	6 9 ↓	6 9 ↓	6 10 ↓	7 10 ↘	7 13 ↘	8 13 ↘	8 14 ↘	8 13 ↘	8 14 ↘	8 13 ↘	8 13 ↘	8 12 ↘	8 12 ↘	7 10 ↘
Houston Pilots H - Morgans Point	5 7 ↑	3 6 ↗	3 6 →	3 6 →	3 6 →	3 7 →	5 7 →	6 8 ↘	6 8 ↘	6 9 ↘	6 9 ↓	6 10 ↓	7 10 ↓	7 12 ↘	7 13 ↘	8 13 ↘	8 14 ↘	8 13 ↘	8 14 ↘	8 13 ↘	8 13 ↘	8 12 ↘	8 12 ↘	7 10 ↘
Houston Pilots G - 75/76	6 8 ↑	5 7 ↗	5 6 →	3 7 →	5 7 →	5 7 →	6 8 →	6 9 ↘	7 10 ↘	8 12 ↘	8 12 ↓	7 12 ↓	7 12 ↓	7 12 ↘	7 13 ↘	7 13 ↘	7 13 ↘	7 13 ↘	8 14 ↘	8 13 ↘	8 13 ↘	8 13 ↘	8 13 ↘	8 10 ↘
Houston Pilots F - 63/64	6 8 ↑	6 7 ↗	5 6 →	5 7 →	5 7 →	6 7 →	6 8 →	6 9 ↘	7 10 ↘	8 12 ↘	8 12 ↓	8 12 ↓	7 12 ↓	6 12 ↘	6 13 ↘	6 13 ↘	7 13 ↘	7 13 ↘	7 14 ↘	8 13 ↘	8 13 ↘	8 12 ↘	8 13 ↘	8 10 ↘
Houston Pilots E - 51/52	6 8 ↑	5 7 ↗	5 6 →	3 7 →	5 7 →	5 7 →	6 8 →	6 9 ↘	7 10 ↘	8 12 ↘	8 12 ↓	8 12 ↓	8 13 ↓	7 12 ↘	7 13 ↘	7 13 ↘	7 13 ↘	7 13 ↘	7 13 ↘	7 13 ↘	8 13 ↘	8 12 ↘	8 12 ↘	7 10 ↘
Houston Pilots D - 37/38	6 8 ↑	5 7 ↗	5 6 →	3 7 →	3 7 →	5 7 →	6 8 →	6 8 ↘	7 10 ↘	8 12 ↘	8 12 ↓	8 13 ↓	8 13 ↓	7 12 ↘	7 13 ↘	7 13 ↘	7 12 ↘	7 13 ↘	7 13 ↘	7 13 ↘	8 13 ↘	8 12 ↘	8 12 ↘	7 10 ↘
Houston Pilots C - 25/26	6 8 ↑	5 7 ↗	5 6 →	3 7 →	3 7 →	5 7 →	6 8 →	6 8 ↘	7 9 ↘	8 12 ↘	8 12 ↓	8 13 ↓	8 13 ↓	7 12 ↘	7 13 ↘	7 13 ↘	7 12 ↘	7 13 ↘	6 12 ↘	6 12 ↘	7 13 ↘	8 12 ↘	7 12 ↘	7 10 ↘
Houston Pilots B - 11/12	5 8 ↑	3 8 ↗	3 7 →	3 7 →	3 7 →	3 7 →	3 7 →	5 8 ↘	6 9 ↘	6 12 ↘	7 12 ↓	7 12 ↓	8 13 ↓	8 12 ↘	7 13 ↘	7 13 ↘	7 12 ↘	7 13 ↘	6 12 ↘	6 13 ↘	7 13 ↘	7 12 ↘	6 12 ↘	6 10 ↘
Houston Pilots A - 1 & 2 Bravo	6 9 ↘	6 8 ↘	5 8 ↘	5 7 ↘	5 7 ↘	5 7 ↘	5 8 ↘	6 9 ↘	7 10 ↘	8 12 ↘	8 13 ↓	8 13 ↓	8 14 ↓	8 13 ↘	7 13 ↘	7 13 ↘	6 12 ↘	6 13 ↘	7 13 ↘	7 13 ↘	7 13 ↘	8 12 ↘	7 12 ↘	7 10 ↘

NOTE: This is automated data that may/may not agree with the official BAM thinking that's found on the daily slides.
This data should be used as a guide only.

Houston Pilots: SUN. 8/24/2025

Forecast Discussion

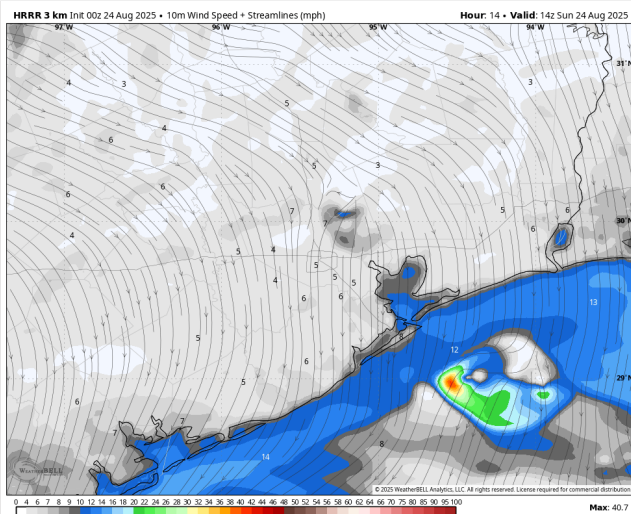
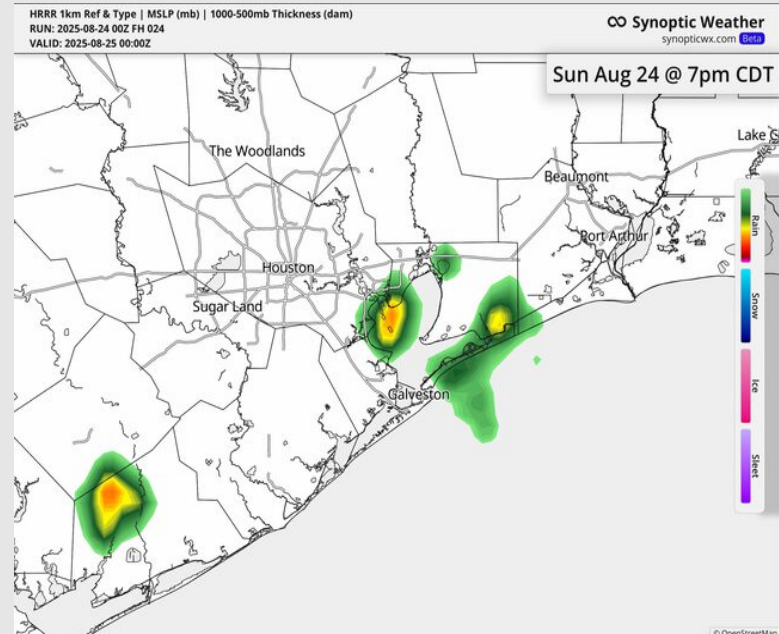
Precip: Isolated showers and storms possible for the Boarding Station from 8 – 11 AM. Hit/miss showers will be possible for all Stations from 4 PM – 10 PM.

Wind: Winds will be variable throughout most of the day, briefly settling out of the N/NW from 3 – 9 AM. **N of Morgan's Point:** Winds will be at 3 – 8 kts. **S of Morgan's Point:** Winds will be at 4 – 9 kts.

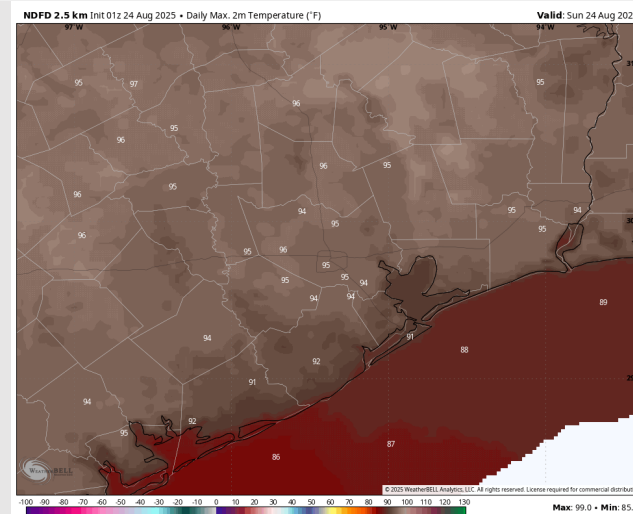
High Temps: **N of Morgan's Point:** Mid 90s F. **S of Morgan's Point:** Low 90s F.

Visibility: No visibility concerns today.

Precip Image: 7 PM CT



Wind Speed:
9 AM CT



High Temps
Today

Houston Pilots: MON. 8/25/2025

Forecast Discussion

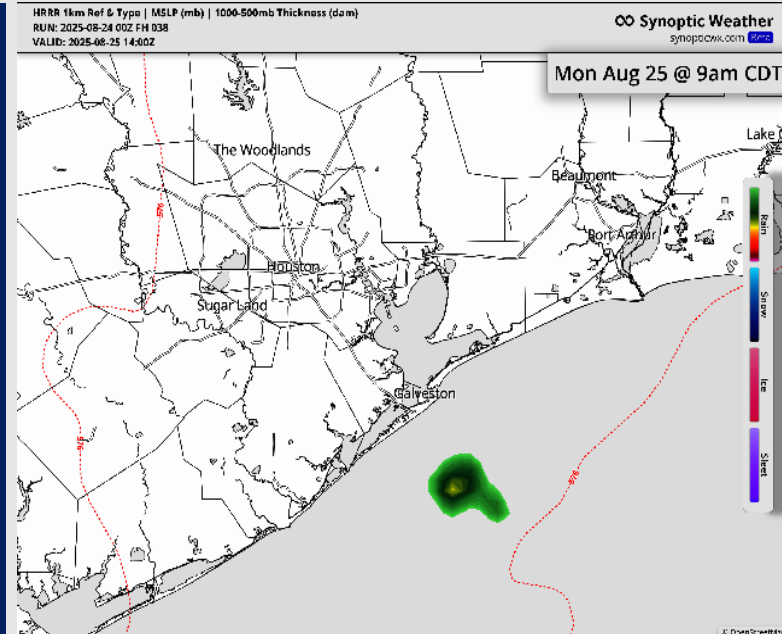
Precip: Isolated showers possible for the Boarding Station from 6 AM – 12 PM Monday.

Wind: Winds will be rather variable throughout the day, with the tendency to blow from the SE. **N of Morgan's Point:** Winds will be at 1 – 6 kts. **S of Morgan's Point:** Winds will be at 1 – 6 kts.

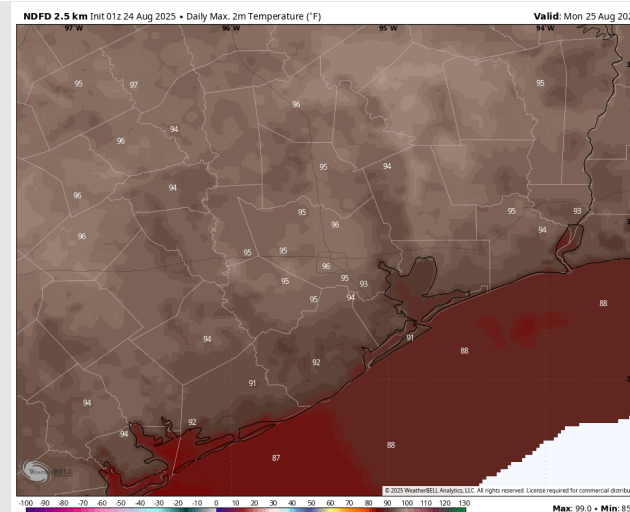
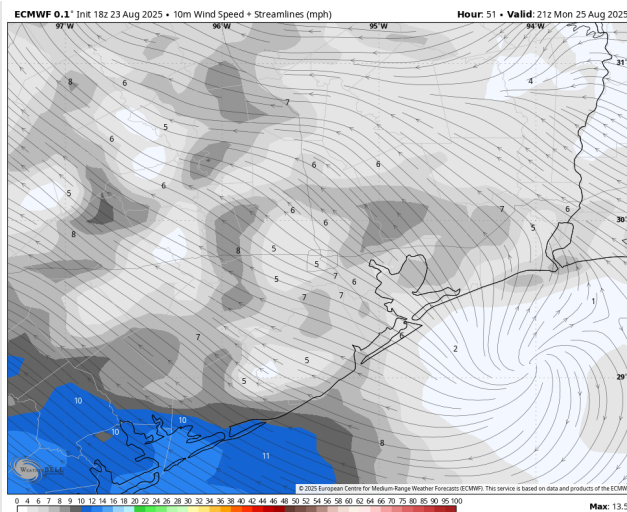
High Temps: **N of Morgan's Point:** Mid 90s F. **S of Morgan's Point:** Low 90s F.

Visibility: No visibility concerns Monday.

Precip Image: 9 AM CT



Wind Speed:
4 PM CT



High Temps
Monday

Houston Pilots: TUE. 8/26/2025

Forecast Discussion

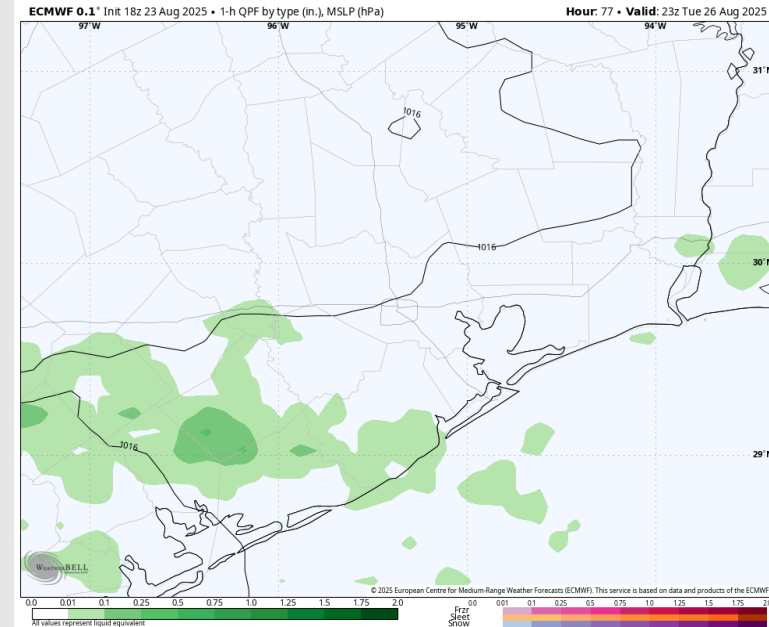
Precip: Isolated showers in play for Stations S of 25/26 from 7 AM to 9 PM, with better coverage expected to the West of all Stations.

Wind: Winds will be variable through 2 PM before settling out of the SE. **N of Morgan's Point:** Winds will be at 1 – 7 kts. **S of Morgan's Point:** Winds will be at 3 – 8 kts.

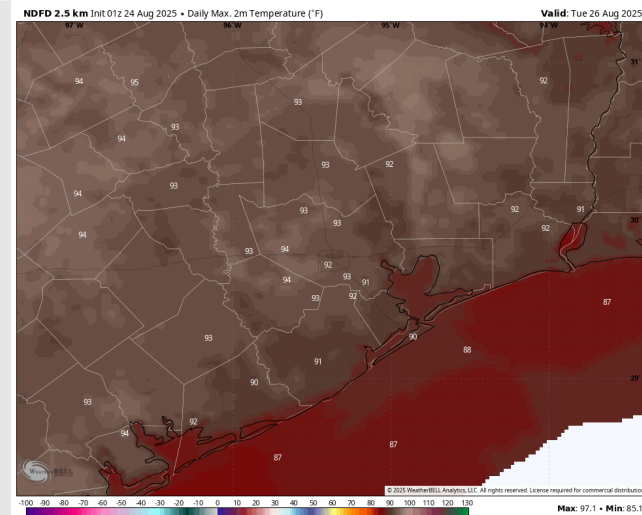
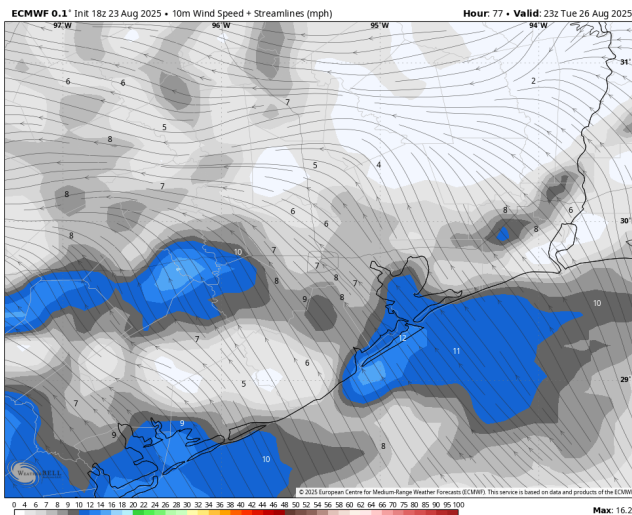
High Temps: **N of Morgan's Point:** High 70s F. **S of Morgan's Point:** Low 80s F.

Visibility: Monitoring a low-end, non-sea fog/mist risk for Stations N of Morgan's Point Tuesday AM.

Precip Image: 6 PM CT



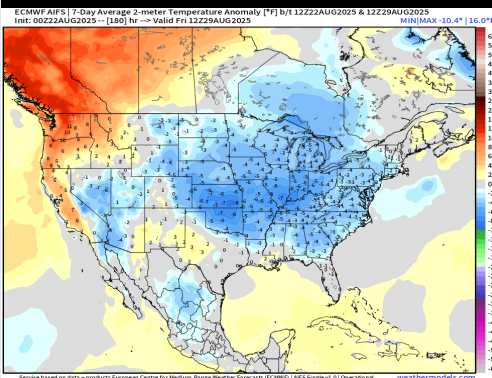
Wind Speed:
6 PM CT



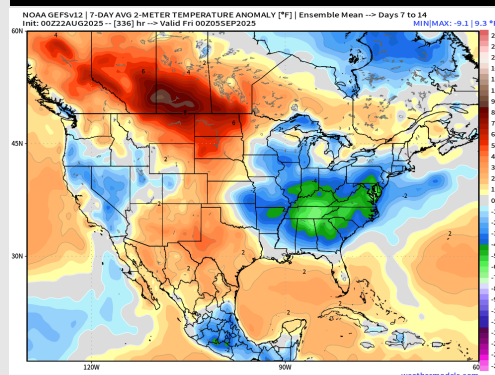
High Temps
Tuesday

Houston Pilots: 8/24/25

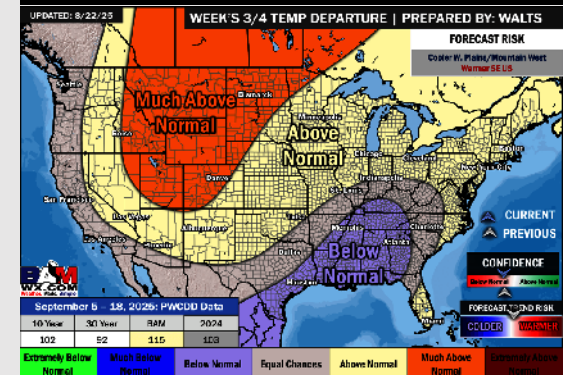
Next 7 Day Temperature Departure



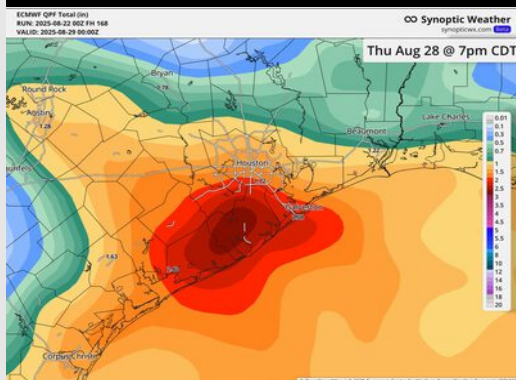
8-14 Day Temperature Departure



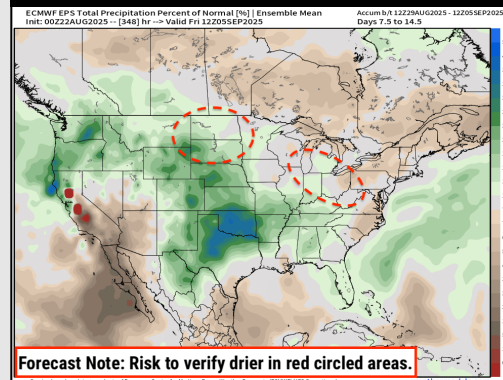
15-30 Day Temperature Departure



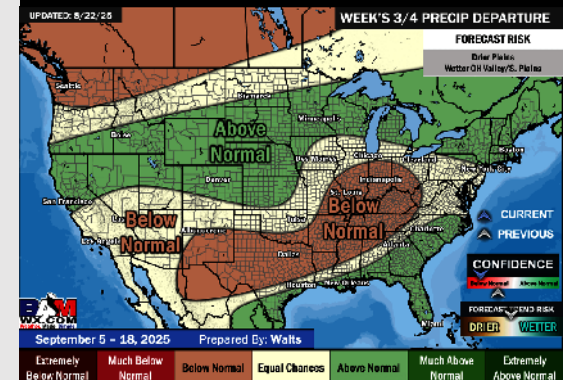
Next 7 Day Total Precipitation



8-14 Day % of Average Precip.



15-30 Day % of Average Precip.



- Temps are expected to be near normal for the next 7 days with scattered rain chances bringing a few downpours throughout the week.
- Slightly above normal temperatures and near normal rain chances are favored for days 8 – 14.
- Below normal temperatures are favored for early to mid September with above normal rainfall chances.