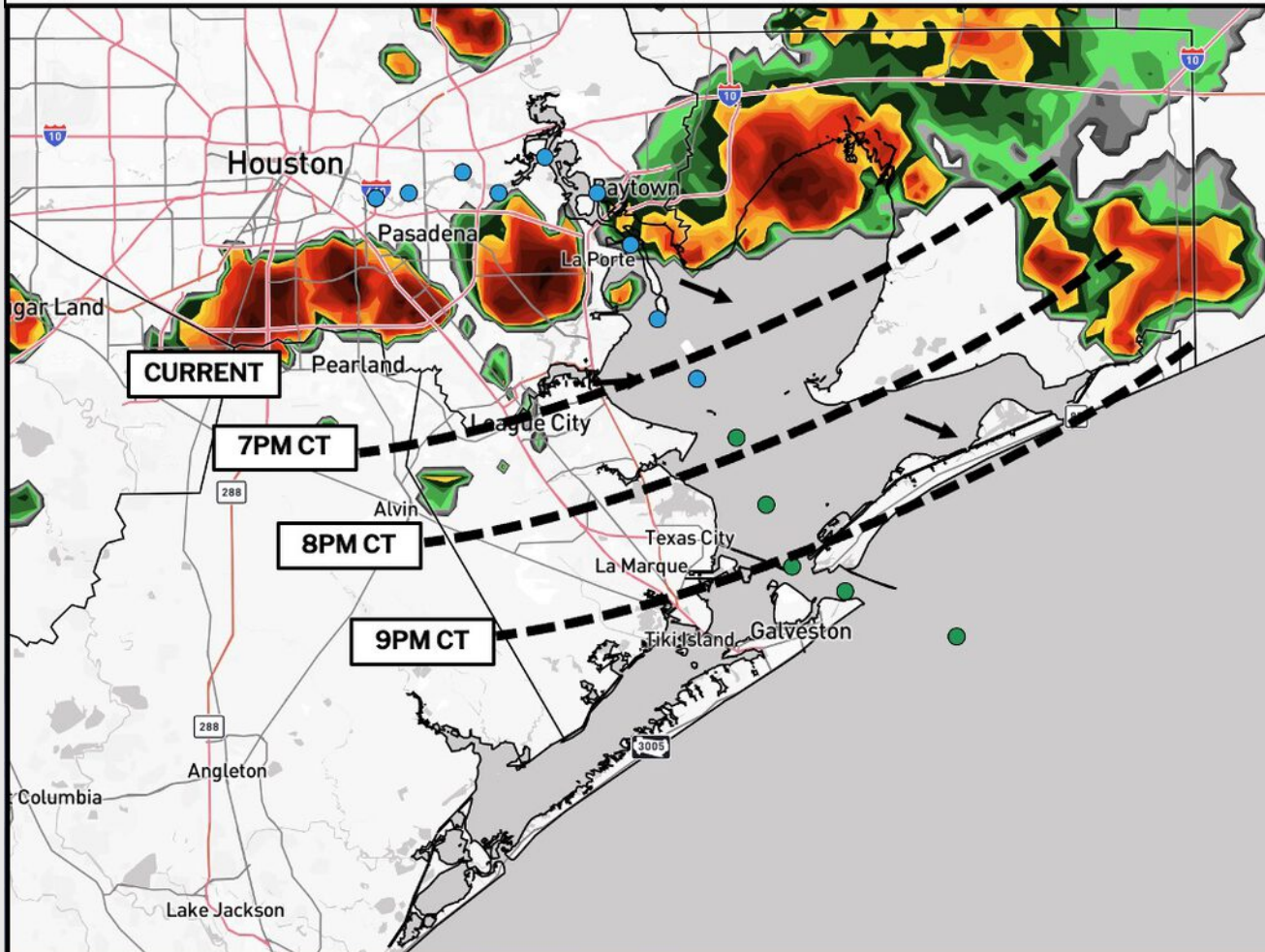


- ✓ Gusts of 30-35kts will be possible in all storms.
- ✓ Storms are very slowly pushing SE, with higher gust risks to become more localized.
- ✓ There is a risk timing of gusts can speed up slightly.



# Houston Pilots Forecast Package



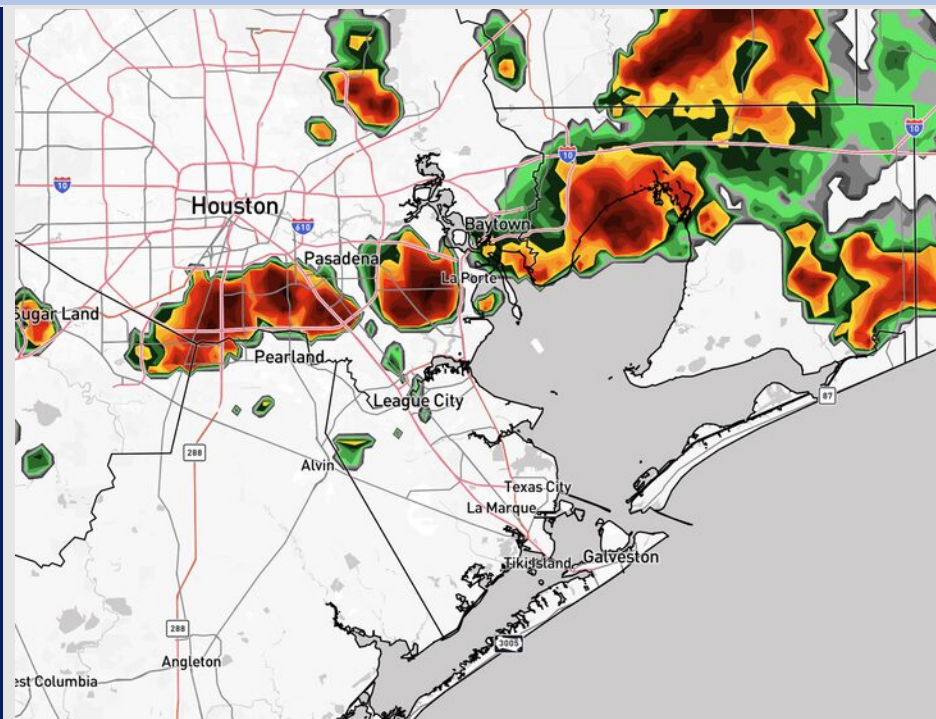
Updated: 6:00 PM CT

Wednesday, August 20, 2025

Forecaster: John Kemper

## Weather Headlines

- Scattered showers and storms will be possible through Friday. A few gusts of 25+ kts will be possible within storms.
- We're watching for additional tropical development in the Atlantic. Additional details on the Tropical Slide.



Current Radar: 6:00 PM CT

As always, please do not hesitate to reach out to us with any forecast questions at **(317)-560-8122**. Press 1 for forecast questions.

You can also access real-time forecast updates and 24/7 meteorological chat assistance on your **Clarity** app. Click [here](#) for login assistance.

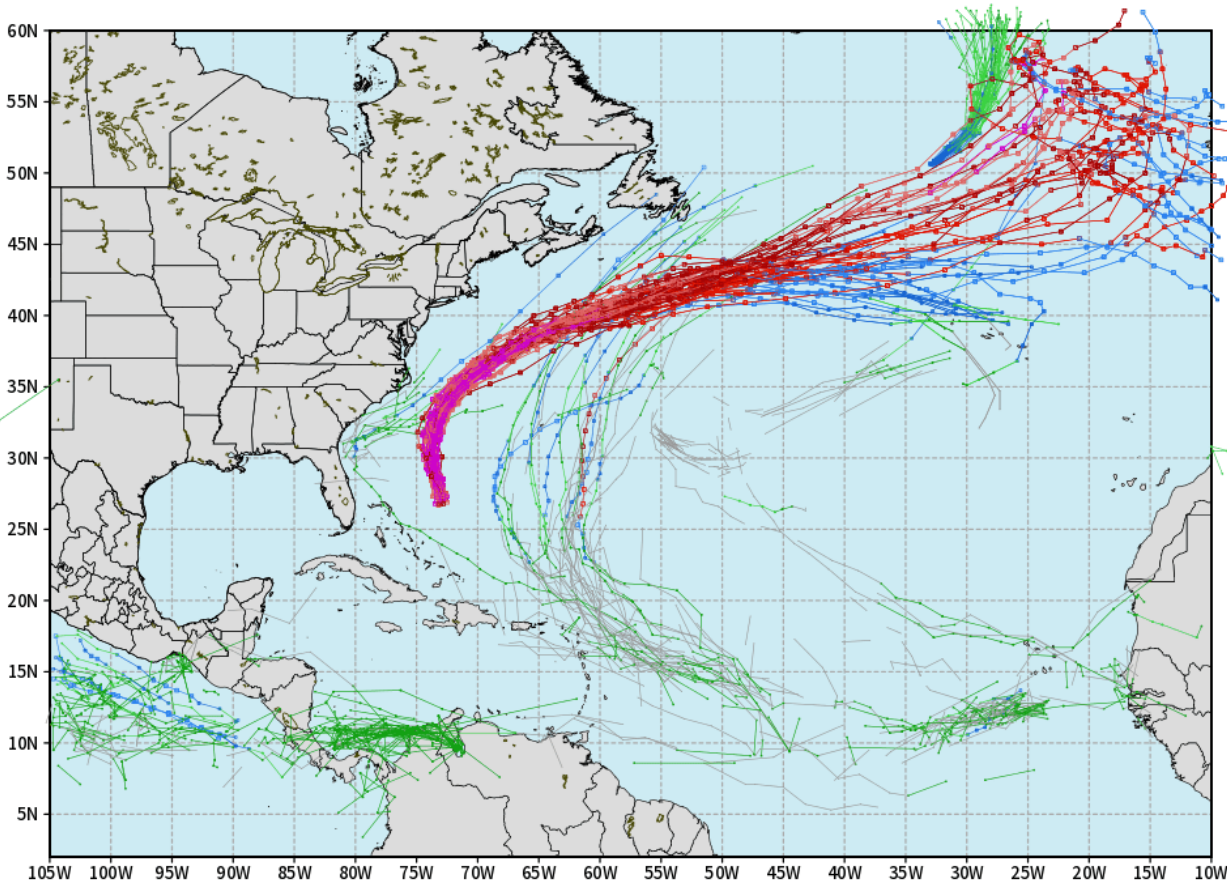


# Houston Pilots Tropical Update

## 10-Day Tropical Outlook

ECMWF ATLANTIC EPS Cyclone Locations --> Next [10-days]  
INIT: 00Z20AUG2025 --> UNTIL 00Z30AUG2025

o-o ENSEMBLE MEAN  
o-o 1000 - 1010 hPa  
o-o 980 - 999 hPa  
o-o 960 - 979 hPa  
o-o 950 - 959 hPa  
o-o < 950 hPa



[weathermodels.com](http://weathermodels.com)

No tropical development favored in the Gulf over the next 10 days.

We are continuing to monitor Hurricane Erin in the Atlantic. We anticipate this storm to continue to turn N, remaining on the E coastline.

We're also watching for potential development in the Atlantic ~Aug. 23 - 29. Still uncertain where exactly this would track, but still, something to monitor.



# Houston Pilots Visibility Chart (miles)



Visibility	Wed 2 pm	Wed 3 pm	Wed 4 pm	Wed 5 pm	Wed 6 pm	Wed 7 pm	Wed 8 pm	Wed 9 pm	Wed 10 pm	Wed 11 pm	Thu 12 am	Thu 1 am	Thu 2 am	Thu 3 am	Thu 4 am	Thu 5 am	Thu 6 am	Thu 7 am	Thu 8 am	Thu 9 am	Thu 10 am	Thu 11 am	Thu 12 pm	Thu 1 pm
Houston Pilots N - 610 Bridge	10	10	10	10	10	10	10	10	10	10	10	10	10	10	10	10	10	10	10	10	10	10	10	10
Houston Pilots M - Kinder 1	10	10	10	10	10	10	10	10	10	10	10	10	10	10	10	10	10	10	10	10	10	10	10	10
Houston Pilots L - Greens Bayou	10	10	10	10	10	10	10	10	10	10	10	10	10	10	10	10	10	10	10	10	10	10	10	10
Houston Pilots K - Shell Crude	10	10	10	10	10	10	10	10	10	10	10	10	10	10	10	10	10	10	10	10	10	10	10	10
Houston Pilots J - Lynchburg Ferries	10	10	10	10	10	10	10	10	10	10	10	10	10	10	10	10	10	10	10	10	10	10	10	10
Houston Pilots I - Exxon 3	10	10	10	10	10	10	10	10	10	10	10	10	10	10	10	10	10	10	10	10	10	10	10	10
Houston Pilots H - Morgans Point	10	10	10	10	10	10	10	10	10	10	10	10	10	10	10	10	10	10	10	10	10	10	10	10
Houston Pilots G - 75/76	10	10	10	10	10	10	10	10	10	10	10	10	10	10	10	10	10	10	10	10	10	10	10	9
Houston Pilots F - 63/64	10	10	10	10	10	10	10	10	10	10	10	10	10	10	10	10	10	10	10	10	10	10	10	9
Houston Pilots E - 51/52	10	10	10	10	10	10	10	10	10	10	10	10	10	10	10	10	10	10	10	10	10	10	10	9
Houston Pilots D - 37/38	10	10	10	10	10	10	10	10	10	10	10	10	10	10	10	10	10	10	10	10	10	10	10	9
Houston Pilots C - 25/26	10	10	10	10	10	10	10	10	10	10	10	10	10	10	10	10	10	10	10	10	10	10	10	9
Houston Pilots B - 11/12	10	10	10	10	10	10	10	10	10	10	10	10	10	10	10	10	10	10	10	10	10	10	10	9
Houston Pilots A - 1 & 2 Bravo	10	10	10	10	10	10	10	10	10	10	10	10	10	10	10	10	10	10	10	10	10	10	10	9

NOTE: This is automated data that may/may not agree with the official BAM thinking that's found on the daily slides or special visibility report slides. This data should be used as a guide only

# Houston Pilots Wind Chart



Forecast Confidence

Above Normal

Below Normal

Sustained Wind 10 Knots

Gusts 15 Knots

Wind from the SE

Example

10

15

↖

Wind	Wed 2 pm	Wed 3 pm	Wed 4 pm	Wed 5 pm	Wed 6 pm	Wed 7 pm	Wed 8 pm	Wed 9 pm	Wed 10 pm	Wed 11 pm	Thu 12 am	Thu 1 am	Thu 2 am	Thu 3 am	Thu 4 am	Thu 5 am	Thu 6 am	Thu 7 am	Thu 8 am	Thu 9 am	Thu 10 am	Thu 11 am	Thu 12 pm	Thu 1 pm
Houston Pilots N - 610 Bridge	3 9 ↙	3 9 ↙	3 9 ↙	3 8 ↙	3 9 ↙	3 8 ↙	3 8 ↗	3 8 ↗	3 7 ↙	2 6 ↙	2 6 ↙	2 6 ↗	2 6 →	2 5 →	2 6 →	3 7 ↗	3 7 ↗	3 7 ↙	3 8 ↙	3 7 ↙	3 8 ↙	3 9 ↓	5 9 ↓	3 9 ↓
Houston Pilots M - Kinder 1	3 9 ↙	3 9 ↙	3 9 ↙	3 8 ↙	3 9 ↙	3 8 ↙	3 8 ↗	3 8 ↗	3 7 ↙	2 6 ↙	2 6 ↙	2 6 ↗	2 6 →	2 5 →	2 6 →	3 7 ↗	3 6 ↗	3 7 ↙	3 8 ↙	3 7 ↙	3 8 ↙	3 9 ↓	5 9 ↓	5 9 ↓
Houston Pilots L - Greens Bayou	3 9 ↙	3 8 ↙	3 9 ↙	3 8 ↙	3 8 ↙	3 8 ↙	3 8 ↗	3 7 ↗	3 7 ↙	2 6 ↙	2 6 ↙	2 5 →	2 5 →	2 5 →	3 5 →	3 7 ↗	3 6 ↗	3 7 ↙	3 7 ↙	3 8 ↙	3 9 ↓	3 9 ↓	5 9 ↓	3 9 ↓
Houston Pilots K - Shell Crude	3 9 ↙	3 8 ↙	3 9 ↙	3 8 ↙	3 8 ↙	3 8 ↙	3 8 ↗	3 7 ↗	3 7 ↙	2 6 ↙	2 6 ↙	2 6 ↗	2 5 →	2 5 →	2 5 →	3 7 ↗	3 6 ↗	3 7 ↙	3 7 ↙	3 8 ↙	3 9 ↓	3 9 ↓	5 9 ↓	3 9 ↓
Houston Pilots J - Lynchburg Ferries	3 9 ↙	3 8 ↙	3 8 ↙	3 8 ↙	3 8 ↙	3 8 ↙	3 8 ↗	3 7 ↗	2 7 ↙	2 6 ↙	1 5 ↙	1 5 ↙	1 5 ↙	1 5 ↙	2 5 ↙	2 6 ↙	2 5 ↙	2 6 ↙	3 7 ↙	3 7 ↙	3 7 ↙	3 8 ↓	5 9 ↓	3 9 ↓
Houston Pilots I - Exxon 3	6 9 ↙	6 10 ↙	6 10 ↙	6 9 ↙	6 10 ↙	6 9 ↙	7 9 ↗	6 9 ↗	6 8 ↙	6 9 ↙	6 8 ↙	6 7 ↙	6 7 ↙	6 8 ↙	6 8 ↙	6 8 ↙	6 9 ↙	6 9 ↙	7 9 ↙	6 9 ↙	6 9 ↙	6 10 ↓	6 10 ↓	6 10 ↓
Houston Pilots H - Morgans Point	6 9 ↙	6 10 ↙	6 10 ↙	6 9 ↙	6 9 ↙	6 9 ↙	7 9 ↗	6 9 ↗	6 8 ↙	6 8 ↙	6 7 ↙	6 7 ↙	6 8 ↙	6 8 ↙	6 8 ↙	6 8 ↙	6 9 ↙	6 9 ↙	7 9 ↙	6 9 ↙	6 9 ↙	6 10 ↓	6 10 ↓	6 10 ↓
Houston Pilots G - 75/76	5 9 ↙	5 9 ↙	5 10 ↙	6 10 ↙	6 10 ↙	6 9 ↙	7 10 ↗	7 9 ↗	6 9 ↙	7 9 ↙	6 8 ↙	6 8 ↙	6 8 ↙	6 9 ↙	6 9 ↙	7 9 ↙	7 10 ↙	8 10 ↙	8 12 ↙	7 10 ↙	7 10 ↙	7 12 ↓	6 10 ↓	6 10 ↓
Houston Pilots F - 63/64	3 9 ↙	3 9 ↙	5 10 ↙	6 10 ↙	6 10 ↙	6 9 ↙	7 10 ↗	7 9 ↗	7 9 ↙	7 9 ↙	6 9 ↙	6 8 ↙	6 8 ↙	6 9 ↙	6 9 ↙	7 9 ↙	7 10 ↙	8 10 ↙	8 12 ↙	8 10 ↙	7 10 ↙	7 12 ↓	6 10 ↓	5 10 ↓
Houston Pilots E - 51/52	5 9 ↙	3 9 ↙	5 9 ↙	5 9 ↙	6 10 ↙	6 10 ↙	7 10 ↗	7 9 ↗	7 9 ↙	7 9 ↙	6 9 ↙	6 8 ↙	6 8 ↙	6 9 ↙	6 9 ↙	7 9 ↙	7 10 ↙	8 12 ↙	8 12 ↙	8 12 ↙	8 12 ↙	7 13 ↓	6 12 ↓	6 10 ↓
Houston Pilots D - 37/38	5 9 ↙	3 9 ↙	3 9 ↙	5 9 ↙	6 10 ↙	6 9 ↙	7 10 ↗	7 9 ↗	6 9 ↙	7 9 ↙	6 9 ↙	6 8 ↙	6 8 ↙	6 9 ↙	6 9 ↙	7 9 ↙	7 10 ↙	8 12 ↙	8 12 ↙	8 12 ↙	8 12 ↙	7 13 ↓	6 12 ↓	6 10 ↓
Houston Pilots C - 25/26	5 9 ↙	3 9 ↙	3 8 ↙	5 8 ↙	5 9 ↙	6 9 ↙	7 9 ↙	6 9 ↙	6 9 ↙	6 9 ↙	6 9 ↙	6 8 ↙	6 8 ↙	6 8 ↙	6 9 ↙	6 9 ↙	7 10 ↙	8 10 ↙	8 12 ↙	8 12 ↙	8 12 ↙	8 13 ↓	6 12 ↓	6 10 ↓
Houston Pilots B - 11/12	5 9 ↙	3 9 ↙	3 8 ↙	5 8 ↙	5 9 ↙	6 9 ↙	7 9 ↙	6 9 ↙	6 9 ↙	6 9 ↙	6 8 ↙	5 8 ↙	5 8 ↙	5 8 ↙	5 9 ↙	6 9 ↙	6 10 ↙	6 10 ↙	7 12 ↙	7 12 ↙	7 12 ↙	7 13 ↓	6 12 ↓	6 10 ↓
Houston Pilots A - 1 & 2 Bravo	3 8 ↙	3 8 ↙	3 8 ↙	5 8 ↙	6 9 ↙	6 9 ↙	6 9 ↙	6 9 ↙	6 9 ↙	6 9 ↙	6 9 ↙	6 9 ↙	6 9 ↙	6 9 ↙	7 10 ↙	7 10 ↙	8 12 ↙	8 13 ↙	8 13 ↙	8 13 ↙	8 13 ↙	8 13 ↙	6 12 ↓	6 12 ↓

NOTE: This is automated data that may/may not agree with the official BAM thinking that's found on the daily slides.  
This data should be used as a guide only.

# Houston Pilots: WED. 8/20/2025

## Forecast Discussion

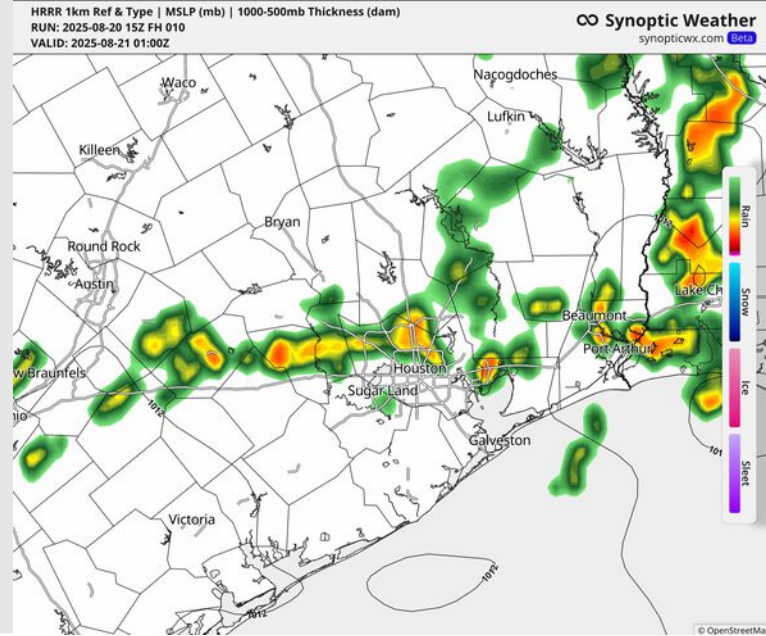
**Precip:** Scattered showers/storms in play for all Stations for the remainder of the day. **Lightning and a few gusts of 25+ kts will be possible within storms, especially from 6PM to 10PM.**

**Wind:** Winds will be variable in direction the rest of the day. **N of Morgan's Point:** Winds will be at 2 – 7 kts. **S of Morgan's Point:** Winds will be at 3 – 8 kts.

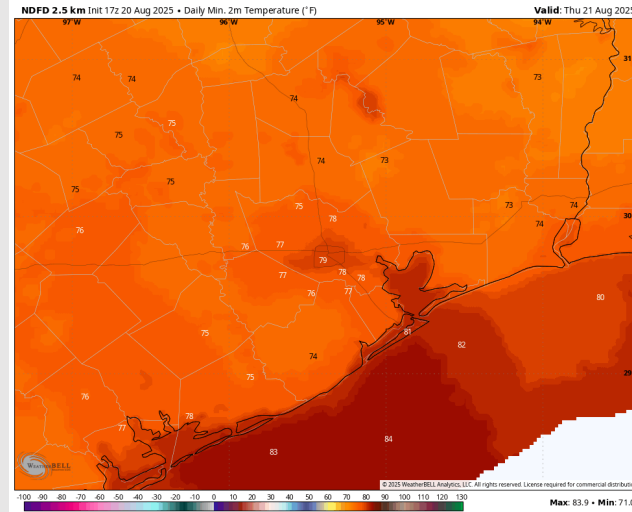
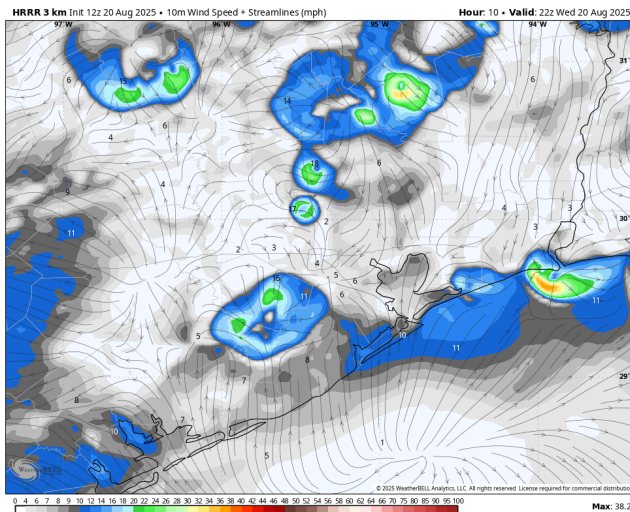
**Low Temps:** **N of Morgan's Point:** Upper 70s F. **S of Morgan's Point:** Low 80s F.

**Visibility:** No fog concerns today. Visibilities may be reduced briefly under heavier downpours.

## Precip Image: 8 PM CT



**Wind Speed:**  
5 PM CT



**Low Temps**  
**THU AM**

# Houston Pilots: THU. 8/21/2025

## Forecast Discussion

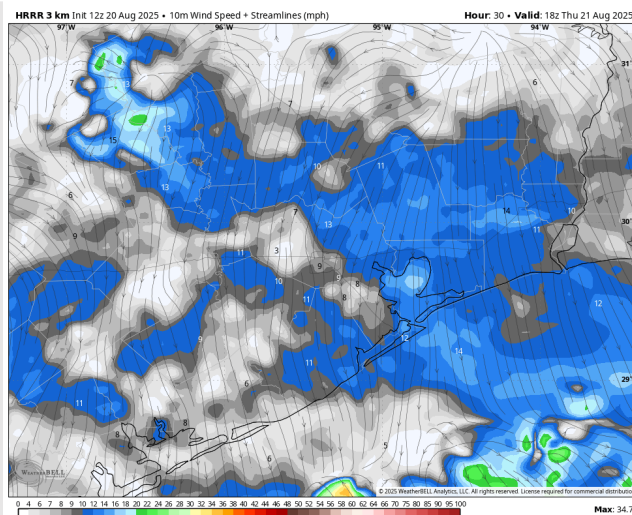
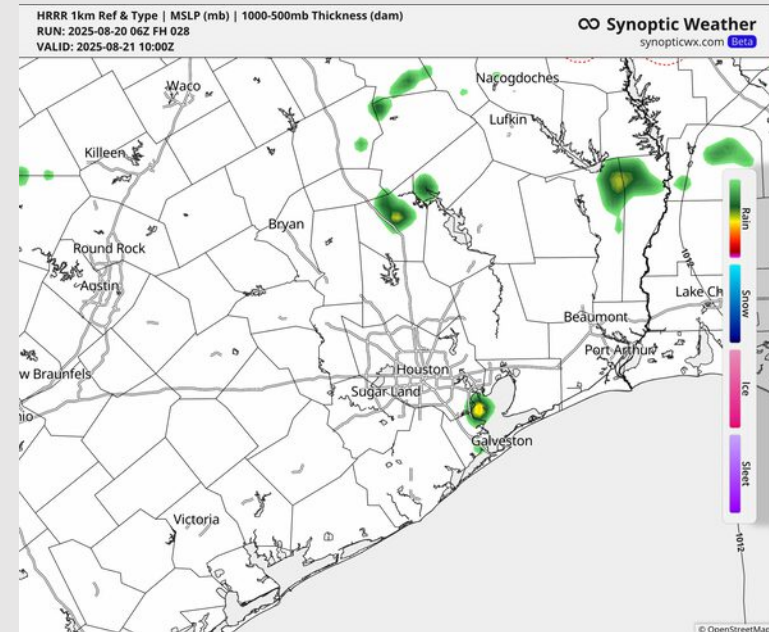
**Precip:** Scattered showers and storms in play S of Morgan's Point through 9 AM. Additional scattered showers and storms for all Stations from 3 – 11 PM. **Lightning and a few gusts of 25+ kts will be possible within storms.**

**Wind:** Winds will be variable on Thursday, with the tendency to be out of the N. **N of Morgan's Point:** Winds will be at 5 – 10 kts. **S of Morgan's Point:** Winds will be at 8 – 13 kts.

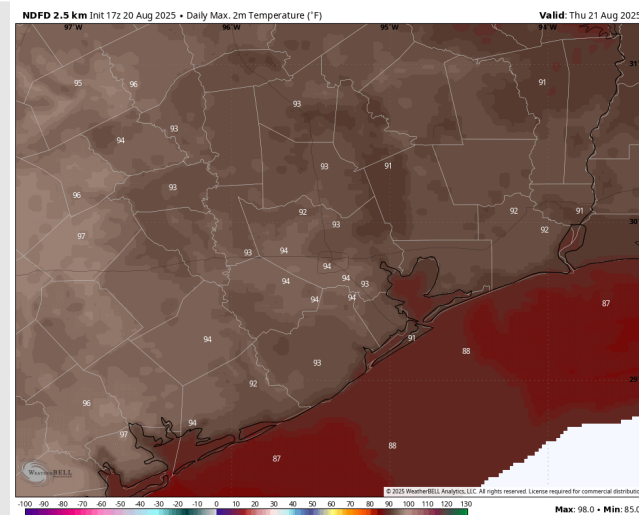
**High Temps:** **N of Morgan's Point:** Low 90s F. **S of Morgan's Point:** Near 90 F.

**Visibility:** No fog concerns Thursday. Visibilities may be reduced under heavier downpours.

## Precip Image: 5 AM CT



**Wind Speed:**  
1 PM CT



**High Temps**  
**Thursday**



# Houston Pilots: FRI. 8/22/2025

## Forecast Discussion

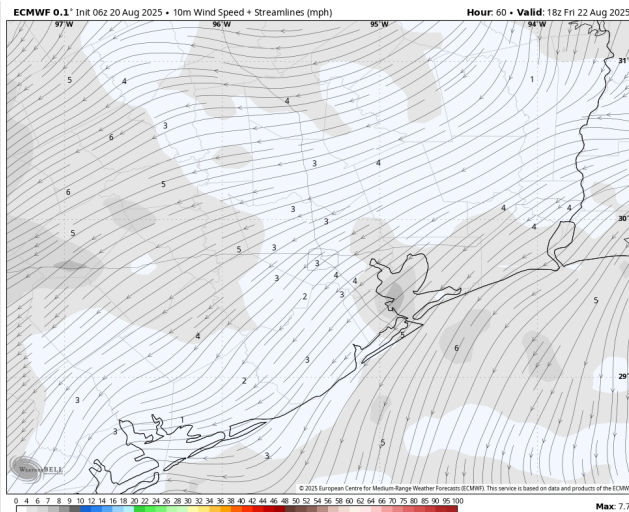
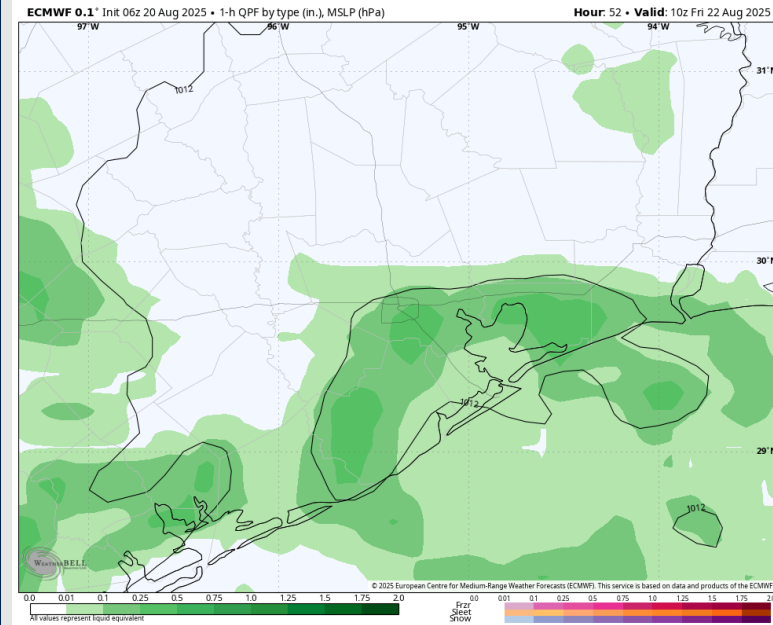
**Precip:** Scattered showers and storms (60%) possible from 1 AM – 7AM. Isolated showers (20-30%) possible from 7AM – 7PM. Lightning and heavy downpours will be possible within storms.

**Wind:** Winds will be rather variable throughout the day. **N of Morgan's Point:** Winds will be at 1 – 6 kts. **S of Morgan's Point:** Winds will be at 3 – 8 kts.

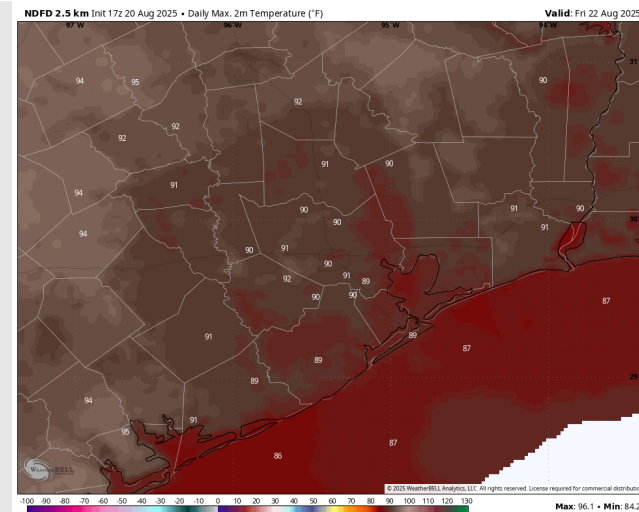
**High Temps:** **N of Morgan's Point:** Near 90 F. **S of Morgan's Point:** Near 90 F.

**Visibility:** No fog concerns Friday, however, visibilities may be reduced under heavy downpours.

## Precip Image: 5 AM CT



**Wind Speed:**  
1 PM CT

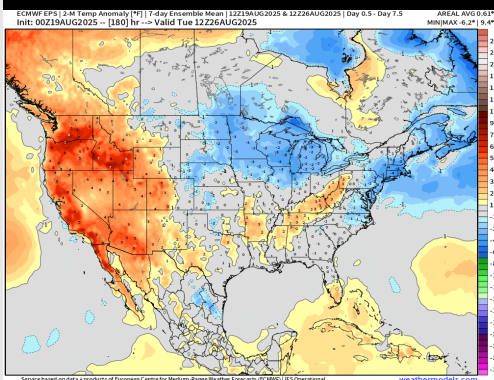


**High Temps**  
**Friday**

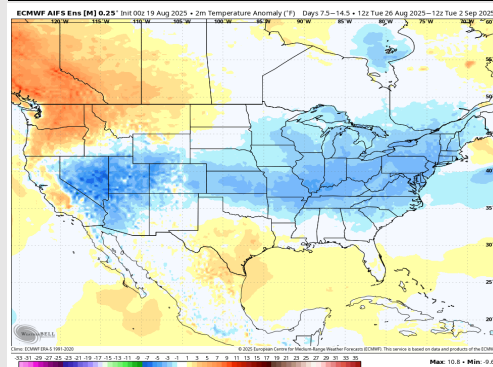


# Houston Pilots: 8/20/25

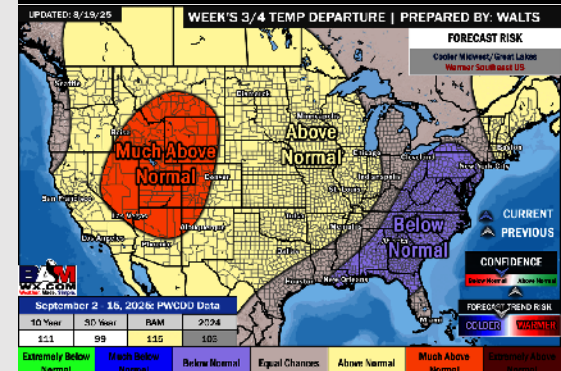
## Next 7 Day Temperature Departure



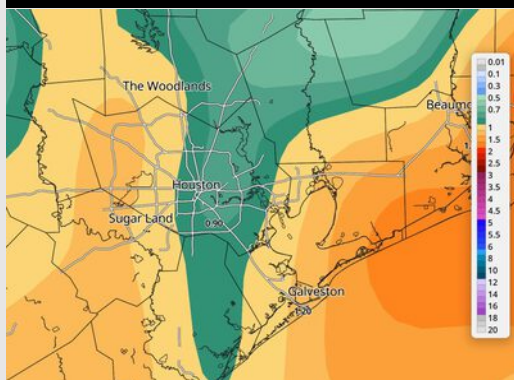
## 8-14 Day Temperature Departure



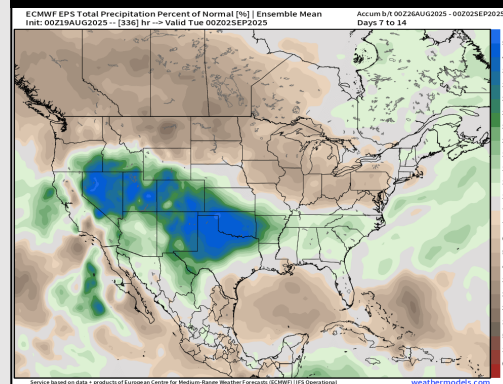
## 15-30 Day Temperature Departure



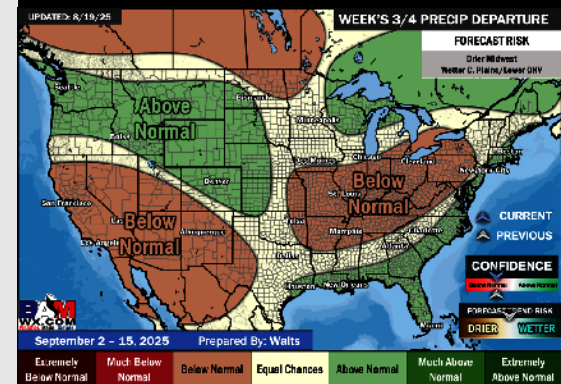
## Next 7 Day Total Precipitation



## 8-14 Day % of Average Precip.



## 15-30 Day % of Average Precip.



- Temps are expected to be near normal for the next 7 days with scattered rain chances throughout the week.
- Above normal temperatures and near normal rain chances are favored for days 8 – 14.
- Seasonal temperatures are favored for the end of August/early September with above normal rainfall chances.