

Houston Pilots Forecast Package



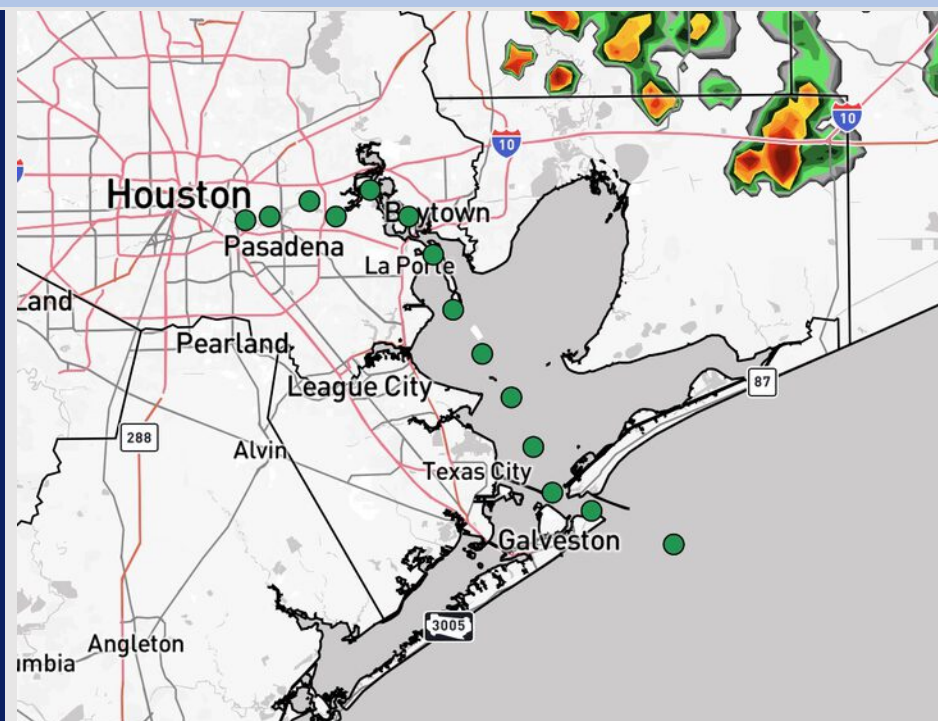
Updated: 12:00 AM CT

Tuesday, August 19, 2025

Forecaster: Tyler Riggles

Weather Headlines

- Scattered showers and storms will be possible throughout the day, with additional chances on WED and THU.
- We're watching for additional tropical development in the Atlantic with the possibility to head towards the Gulf late month. Additional details on the Tropical Slide.



Current Radar: 11:52 PM CT

As always, please do not hesitate to reach out to us with any forecast questions at **(317)-560-8122**. Press **1** for forecast questions.

You can also access real-time forecast updates and 24/7 meteorological chat assistance on your **Clarity** app. Click [here](#) for login assistance.

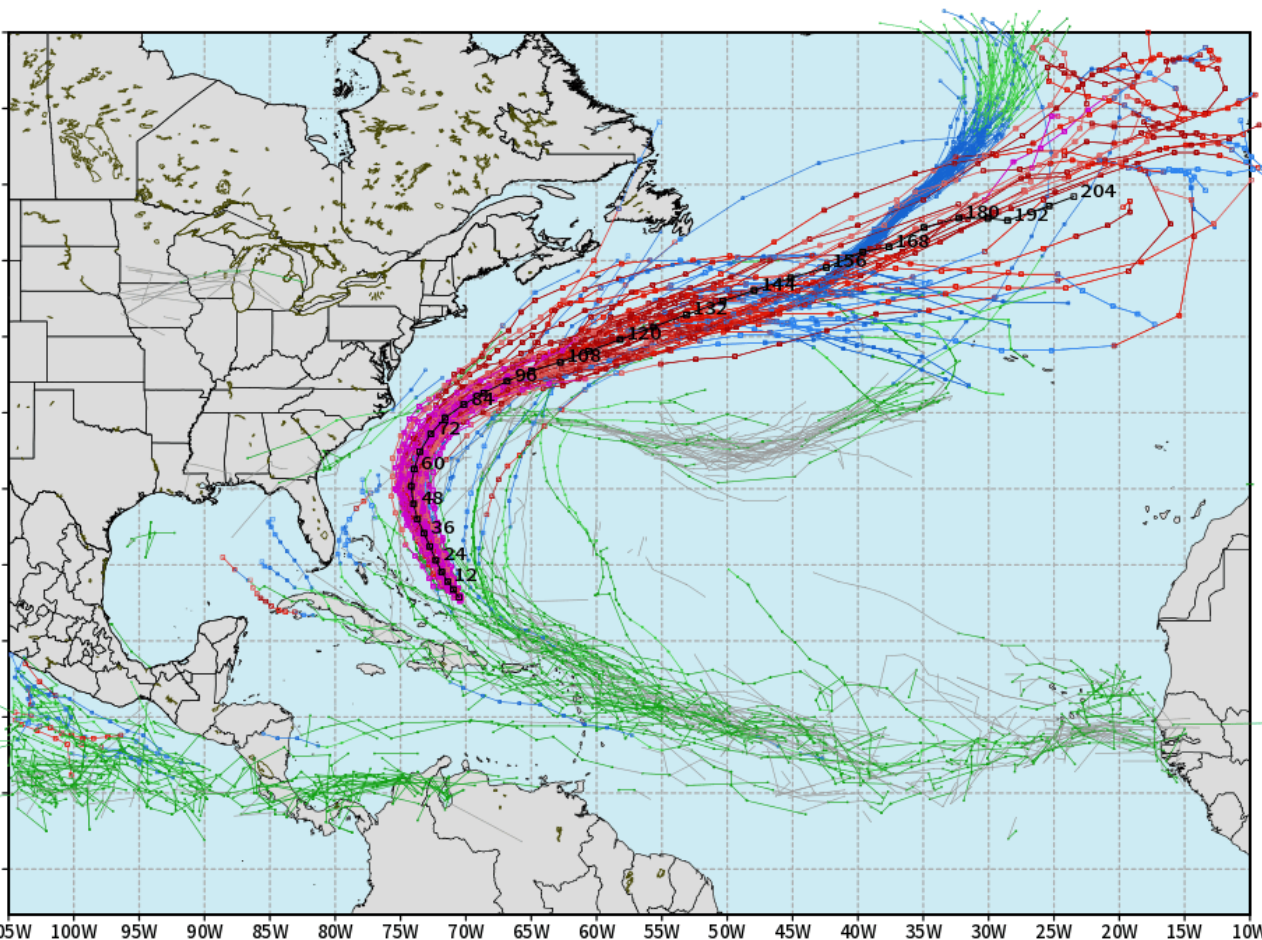


Houston Pilots Tropical Update

10-Day Tropical Outlook

CMWF ATLANTIC EPS Cyclone Locations --> Next [10-days]
IT: 12Z18AUG2025 --> UNTIL 12Z28AUG2025

o-o ENSEMBLE MEAN
o-o 1000 - 1010 hPa
o-o 980 - 999 hPa
o-o 960 - 979 hPa
o-o 950 - 959 hPa
o-o < 950 hPa



weathermodels.co

No tropical development favored in the Gulf over the next 10 days.

We are continuing to monitor Hurricane Erin in the Atlantic. We anticipate this storm to continue to turn N, remaining on the E coastline.

We're also watching for potential development in the Atlantic ~Aug. 23 - 29. Still uncertain where exactly this would track, but still, something to monitor.

Houston Pilots Visibility Chart (miles)



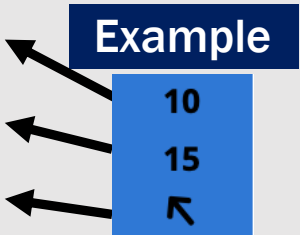
Visibility	Tue 1 am	Tue 2 am	Tue 3 am	Tue 4 am	Tue 5 am	Tue 6 am	Tue 7 am	Tue 8 am	Tue 9 am	Tue 10 am	Tue 11 am	Tue 12 pm	Tue 1 pm	Tue 2 pm	Tue 3 pm	Tue 4 pm	Tue 5 pm	Tue 6 pm	Tue 7 pm	Tue 8 pm	Tue 9 pm	Tue 10 pm	Tue 11 pm	Wed 12 am
Houston Pilots N - 610 Bridge	10	10	10	10	10	10	10	10	10	10	10	10	10	10	10	10	10	10	10	10	10	10	10	10
Houston Pilots M - Kinder 1	10	10	10	10	10	10	10	10	10	10	10	10	10	10	10	10	10	10	10	10	10	10	10	10
Houston Pilots L - Greens Bayou	10	10	10	10	10	10	10	10	10	10	10	10	10	10	10	10	10	10	10	10	10	10	10	10
Houston Pilots K - Shell Crude	10	10	10	10	10	10	10	10	10	10	10	10	10	10	10	10	10	10	10	10	10	10	10	10
Houston Pilots J - Lynchburg Ferries	10	10	10	10	10	10	10	10	10	10	10	10	10	10	10	10	10	10	10	10	10	10	10	10
Houston Pilots I - Exxon 3	10	10	10	10	10	10	10	10	10	10	10	10	10	10	10	10	10	10	10	10	10	10	10	10
Houston Pilots H - Morgans Point	10	10	10	10	10	10	10	10	10	10	10	10	10	10	10	10	10	10	10	10	10	10	10	10
Houston Pilots G - 75/76	10	10	10	10	10	10	10	10	10	10	10	10	10	10	10	10	9	9	9	7.9	9	10	10	9
Houston Pilots F - 63/64	10	10	10	10	10	10	10	10	10	10	10	10	10	10	10	10	9	9	7.9	7.9	7.9	10	10	10
Houston Pilots E - 51/52	10	10	10	10	10	10	10	10	10	10	10	10	9	10	10	9	7.9	6.9	6.9	6.9	6.9	9	9	10
Houston Pilots D - 37/38	10	10	10	10	10	10	10	10	10	10	10	9	7.9	10	10	9	6.9	6.9	6.9	6.9	6.9	9	7.9	10
Houston Pilots C - 25/26	10	10	10	10	10	10	10	10	10	10	10	9	7.9	10	10	7.9	6.9	6.9	6.9	6.9	6.9	7.9	7.9	10
Houston Pilots B - 11/12	10	10	10	10	10	10	10	10	10	10	10	9	7.9	10	10	7.9	6.9	6.9	6.9	6.9	6.9	7.9	6.9	10
Houston Pilots A - 1 & 2 Bravo	10	10	10	10	10	10	10	10	10	10	10	9	7.9	10	10	7.9	6.9	6.9	6.9	6.9	6.9	7.9	6.9	10

NOTE: This is automated data that may/may not agree with the official BAM thinking that's found on the daily slides or special visibility report slides. This data should be used as a guide only

Houston Pilots Wind Chart



Sustained Wind 10 Knots
Gusts 15 Knots
Wind from the SE



Wind	Tue 1 am	Tue 2 am	Tue 3 am	Tue 4 am	Tue 5 am	Tue 6 am	Tue 7 am	Tue 8 am	Tue 9 am	Tue 10 am	Tue 11 am	Tue 12 pm	Tue 1 pm	Tue 2 pm	Tue 3 pm	Tue 4 pm	Tue 5 pm	Tue 6 pm	Tue 7 pm	Tue 8 pm	Tue 9 pm	Tue 10 pm	Tue 11 pm	Wed 12 am
Houston Pilots N - 610 Bridge	2 5 ↖	1 5 ↖	1 5 ↖	1 5 ↖	2 5 ↘	2 5 ↘	2 6 ↘	2 6 ↘	2 6 ↘	3 7 ↓	3 8 ↓	5 9 ↓	5 9 ↓	5 10 ↓	5 10 ↖	5 10 ↖	5 10 ↖	5 10 ↖	5 9 ↖	5 9 ↖	3 8 ↖	3 6 ↖	2 6 ↖	1 5 ↖
Houston Pilots M - Kinder 1	2 5 ↖	1 5 ↖	1 5 ↖	1 5 ↖	2 5 ↘	2 5 ↘	2 5 ↘	2 6 ↘	2 6 ↘	3 7 ↓	3 8 ↓	5 9 ↓	5 9 ↓	5 10 ↓	5 10 ↖	5 9 ↖	5 10 ↖	5 10 ↖	5 9 ↖	5 9 ↖	3 8 ↖	2 6 ↖	2 6 ↖	1 5 ↖
Houston Pilots L - Greens Bayou	1 5 ↖	1 3 ↖	1 3 ↖	1 3 ↖	1 5 ↖	1 5 ↖	2 5 ↖	2 6 ↖	2 6 ↖	3 7 ↓	3 7 ↓	5 9 ↓	5 9 ↓	5 10 ↓	5 10 ↖	5 9 ↖	5 10 ↖	3 10 ↖	3 9 ↖	3 8 ↖	3 7 ↖	2 6 ↖	2 5 ↖	1 3 ↖
Houston Pilots K - Shell Crude	1 5 ↖	1 3 ↖	1 3 ↖	1 3 ↖	1 5 ↖	1 5 ↖	2 5 ↖	2 6 ↖	2 6 ↖	3 7 ↓	3 7 ↓	3 9 ↓	5 9 ↓	5 10 ↓	5 10 ↖	5 9 ↖	5 9 ↖	5 9 ↖	3 9 ↖	3 8 ↖	3 7 ↖	2 6 ↖	2 5 ↖	1 3 ↖
Houston Pilots J - Lynchburg Ferries	1 3 ↖	1 3 ↖	1 3 ↖	1 3 ↖	1 3 ↖	1 3 ↖	1 5 ↖	2 5 ↖	2 5 ↖	2 7 ↓	3 7 ↓	3 9 ↓	5 9 ↓	5 9 ↓	5 10 ↖	5 9 ↖	5 9 ↖	3 9 ↖	3 9 ↖	3 8 ↖	3 7 ↖	2 6 ↖	1 5 ↖	1 3 ↖
Houston Pilots I - Exxon 3	5 7 ↖	3 7 ↖	3 6 ↖	3 7 ↖	5 7 ↖	5 7 ↖	5 7 ↖	6 7 ↖	6 8 ↖	6 8 ↖	6 8 ↖	6 10 ↓	6 10 ↓	6 12 ↓	6 12 ↖	6 12 ↖	6 10 ↖	6 10 ↖	6 9 ↖	7 10 ↖	6 9 ↖	6 8 ↖	5 7 ↖	3 7 ↖
Houston Pilots H - Morgans Point	5 7 ↖	3 7 ↖	3 7 ↖	3 7 ↖	3 7 ↖	5 7 ↖	5 7 ↖	6 8 ↖	6 8 ↖	6 8 ↖	6 9 ↖	6 10 ↓	6 10 ↓	6 12 ↓	6 12 ↖	6 10 ↖	6 10 ↖	6 10 ↖	6 9 ↖	7 9 ↖	6 9 ↖	5 8 ↖	5 7 ↖	3 7 ↖
Houston Pilots G - 75/76	5 7 ↖	5 7 ↖	5 7 ↖	5 7 ↖	5 7 ↖	6 7 ↖	6 8 ↖	6 9 ↖	6 9 ↖	6 9 ↖	6 9 ↖	6 10 ↓	6 10 ↓	6 10 ↓	6 12 ↖	6 10 ↖	6 10 ↖	6 10 ↖	6 10 ↖	7 10 ↖	6 9 ↖	6 8 ↖	6 7 ↖	5 7 ↖
Houston Pilots F - 63/64	6 7 ↖	5 7 ↖	5 7 ↖	5 7 ↖	5 7 ↖	6 7 ↖	6 8 ↖	7 9 ↖	6 9 ↖	6 9 ↖	6 10 ↓	6 10 ↓	5 10 ↓	6 10 ↓	6 10 ↖	6 10 ↖	6 10 ↖	6 10 ↖	6 9 ↖	7 10 ↖	6 9 ↖	6 8 ↖	6 7 ↖	5 7 ↖
Houston Pilots E - 51/52	5 7 ↖	5 7 ↖	5 7 ↖	5 7 ↖	5 7 ↖	6 7 ↖	6 8 ↖	6 9 ↖	6 9 ↖	6 9 ↖	6 10 ↓	6 10 ↓	5 10 ↓	6 10 ↓	5 10 ↖	5 9 ↖	5 9 ↖	6 10 ↖	6 9 ↖	7 10 ↖	6 9 ↖	6 8 ↖	6 7 ↖	5 7 ↖
Houston Pilots D - 37/38	5 7 ↖	5 7 ↖	3 7 ↖	3 7 ↖	5 7 ↖	5 7 ↖	6 8 ↖	6 9 ↖	6 9 ↖	6 9 ↖	6 10 ↓	6 10 ↓	6 9 ↖	6 10 ↓	5 10 ↖	5 9 ↖	5 9 ↖	6 10 ↖	6 9 ↖	6 10 ↖	6 9 ↖	5 8 ↖	5 7 ↖	3 7 ↖
Houston Pilots C - 25/26	5 7 ↖	3 7 ↖	3 7 ↖	3 7 ↖	3 7 ↖	5 7 ↖	6 8 ↖	6 9 ↖	6 9 ↖	6 9 ↖	6 10 ↓	6 10 ↓	6 9 ↖	6 10 ↓	5 10 ↖	5 9 ↖	5 9 ↖	6 10 ↖	6 9 ↖	6 9 ↖	6 9 ↖	5 8 ↖	5 7 ↖	3 7 ↖
Houston Pilots B - 11/12	3 7 ↖	3 7 ↖	3 7 ↖	3 7 ↖	3 7 ↖	3 7 ↖	5 8 ↖	6 9 ↖	6 9 ↖	6 9 ↖	6 10 ↓	6 10 ↓	6 9 ↖	6 10 ↓	5 10 ↖	5 9 ↖	5 9 ↖	6 10 ↖	6 9 ↖	6 9 ↖	6 8 ↖	5 7 ↖	3 7 ↖	3 7 ↖
Houston Pilots A - 1 & 2 Bravo	3 7 ↖	5 7 ↖	3 7 ↖	3 7 ↖	5 7 ↖	5 7 ↖	6 8 ↖	7 10 ↖	6 9 ↖	6 10 ↓	6 10 ↓	6 10 ↓	6 10 ↓	6 10 ↓	5 10 ↖	5 9 ↖	5 9 ↖	6 10 ↖	6 9 ↖	6 9 ↖	5 8 ↖	5 7 ↖	5 7 ↖	3 7 ↖

NOTE: This is automated data that may/may not agree with the official BAM thinking that's found on the daily slides.
This data should be used as a guide only.

Houston Pilots: TUE. 8/19/2025

Forecast Discussion

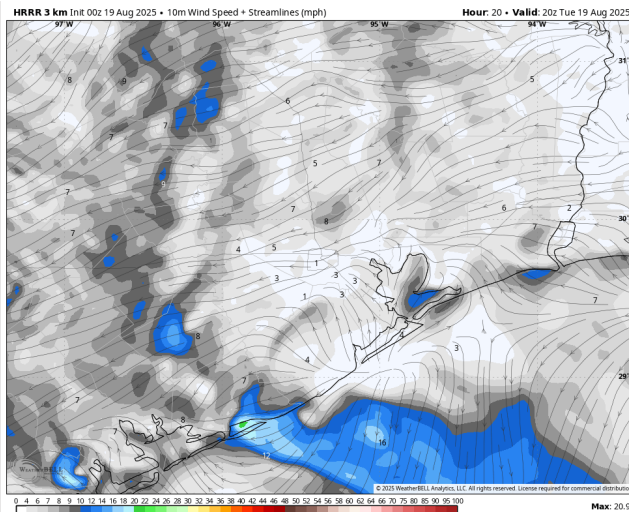
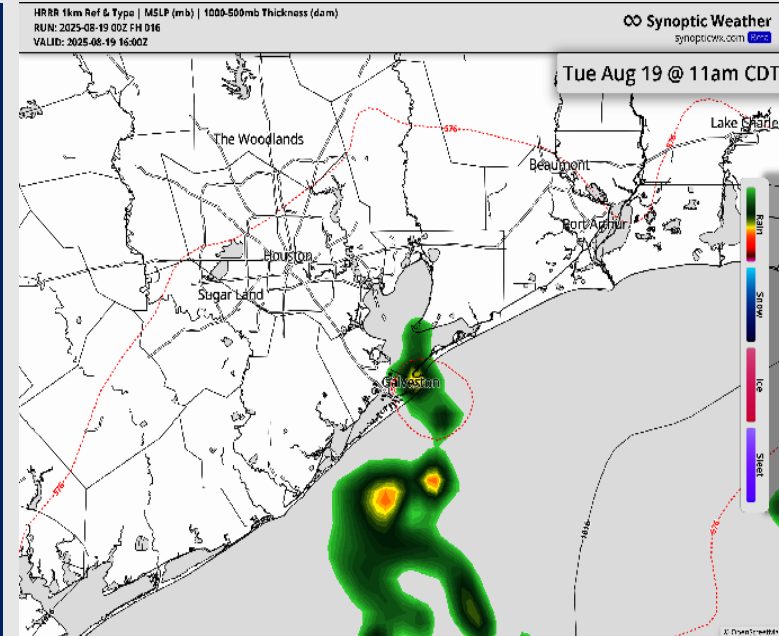
Precip: Scattered showers and storms will be possible from 12AM to 9AM. **Lightning and a few gusts of 25+ kts can be possible within storms.** Isolated showers will then be possible from 9AM to 12PM.

Wind: Winds will be variable throughout the day, with the tendency to blow out of the E. **N of Morgan's Point:** Winds will be at 1 – 6 kts. **S of Morgan's Point:** Winds will be at 2 – 7 kts.

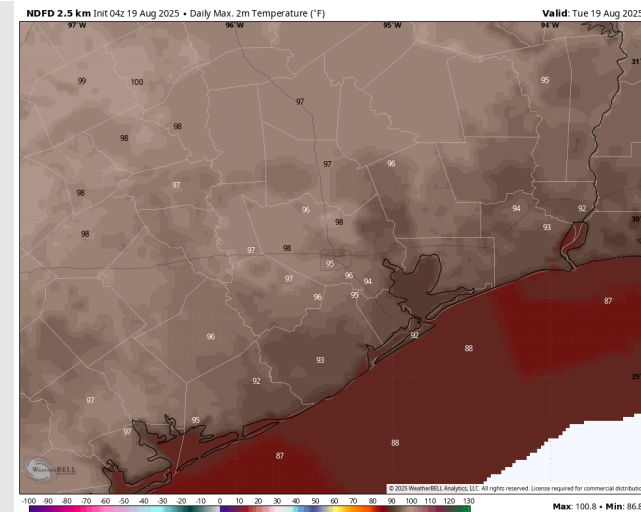
High Temps: **N of Morgan's Point:** Mid 90s F. **S of Morgan's Point:** Low 90s F.

Visibility: No fog concerns today. Visibilities may be reduced under heavier downpours.

Precip Image: 11 AM CT



Wind Speed:
3 PM CT



High Temps
Today

Houston Pilots: WED. 8/20/2025

Forecast Discussion

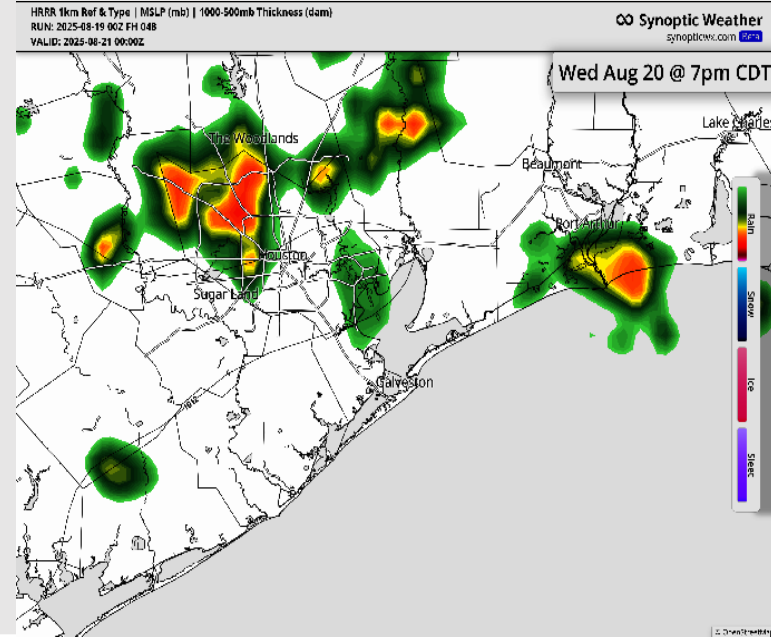
Precip: Hit/miss showers/storms in play for all Stations from 3PM to 9PM. **Lightning and a few gusts of 25+ kts will be possible within storms, especially from 7PM to 9PM.**

Wind: Winds will be variable in direction throughout Wednesday. **N of Morgan's Point:** Winds will be at 1 – 6 kts. **S of Morgan's Point:** Winds will be at 2 – 7 kts.

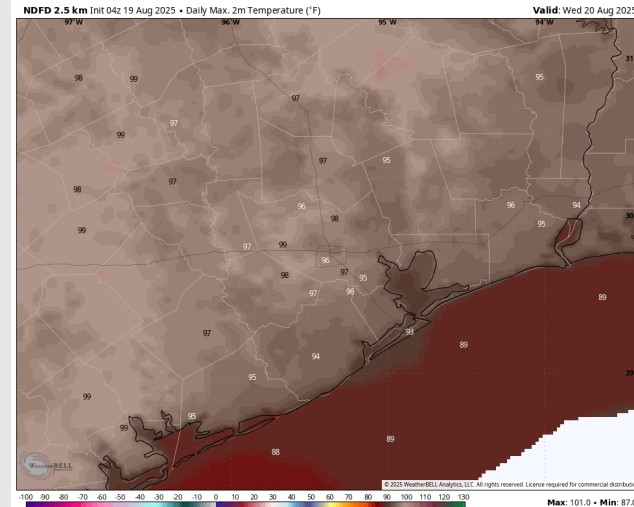
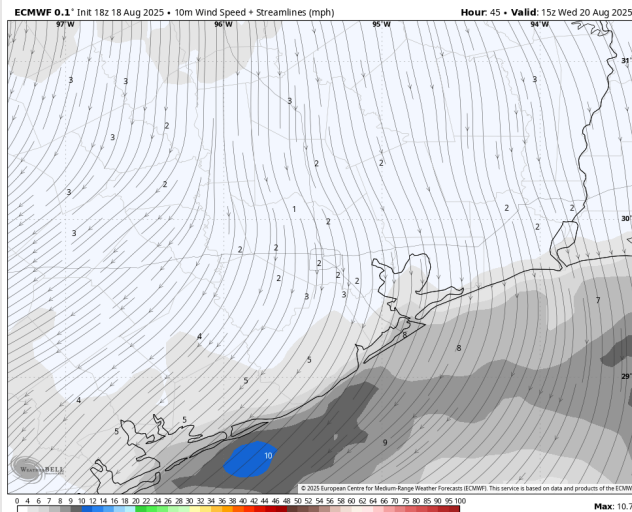
High Temps: **N of Morgan's Point:** High 90s F. **S of Morgan's Point:** Low 90s to mid 90s F.

Visibility: No fog concerns Wednesday. Visibilities may be reduced briefly under heavier downpours.

Precip Image: 7 PM CT



Wind Speed:
10 AM CT



High Temps
Wednesday

Houston Pilots: THU. 8/21/2025

Forecast Discussion

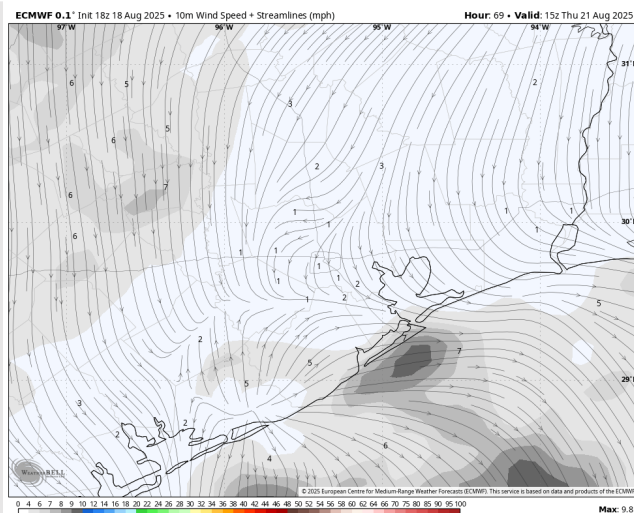
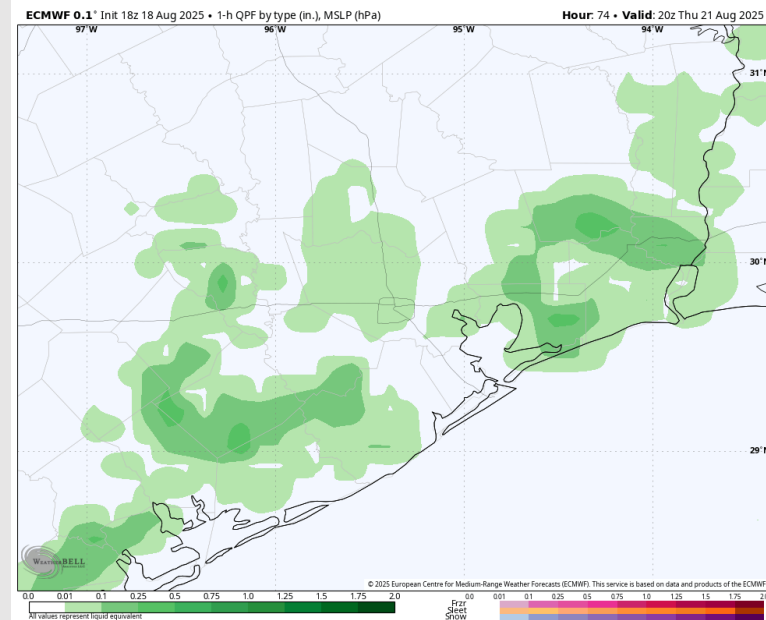
Precip: Scattered showers and storms in play S of 25/26 through 7 AM. Additional scattered showers and storms for all Stations from 12 – 7 PM. **Lightning and a few gusts of 25+ kts will be possible within storms.**

Wind: Winds will be variable on Thursday, with a tendency to be out of the N/NE. **N of Morgan's Point:** Winds will be at 2 – 7 kts. **S of Morgan's Point:** Winds will be at 3 – 8 kts.

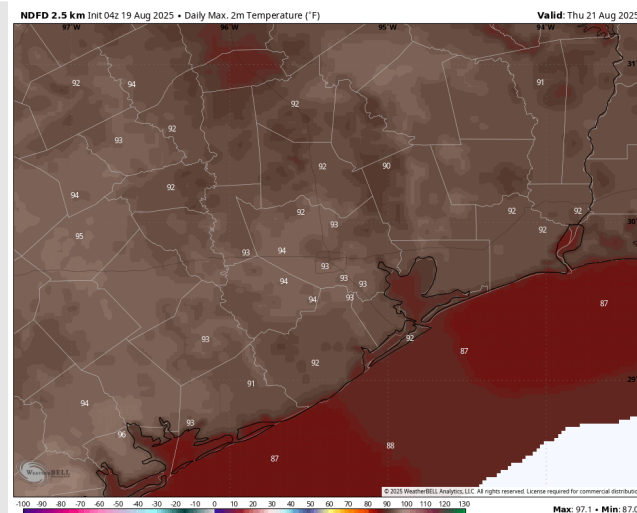
High Temps: **N of Morgan's Point:** Low 90s F. **S of Morgan's Point:** Upper 80s / Near 90 F.

Visibility: No fog concerns Thursday. Visibilities may be reduced under heavier downpours.

Precip Image: 3 PM CT



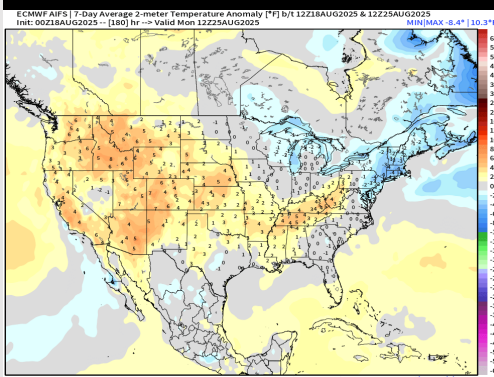
Wind Speed:
10 AM CT



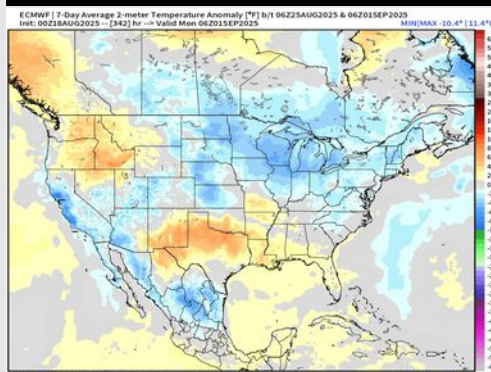
High Temps
Thursday

Houston Pilots: 8/19/25

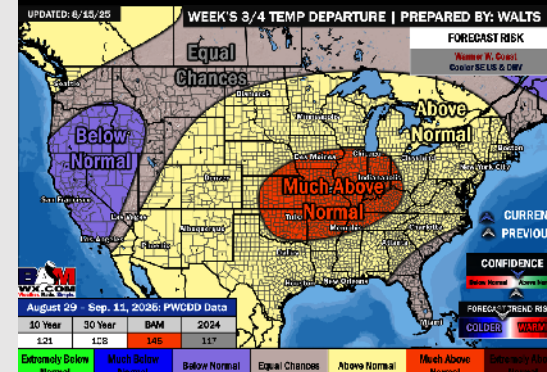
Next 7 Day Temperature Departure



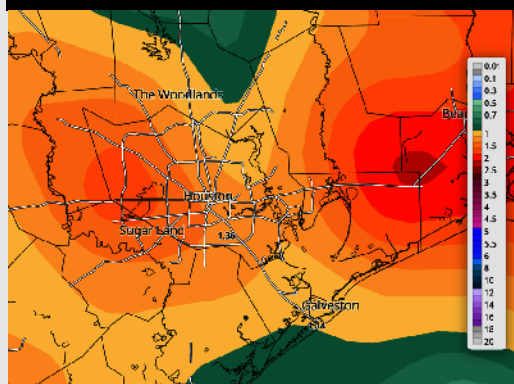
8-14 Day Temperature Departure



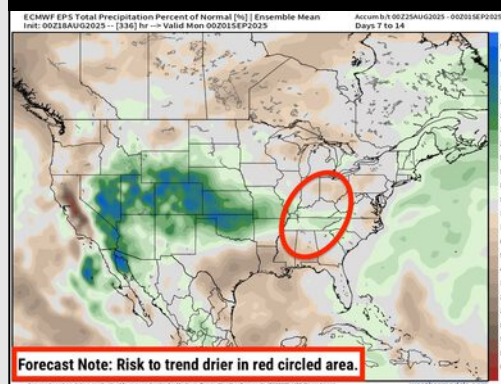
15-30 Day Temperature Departure



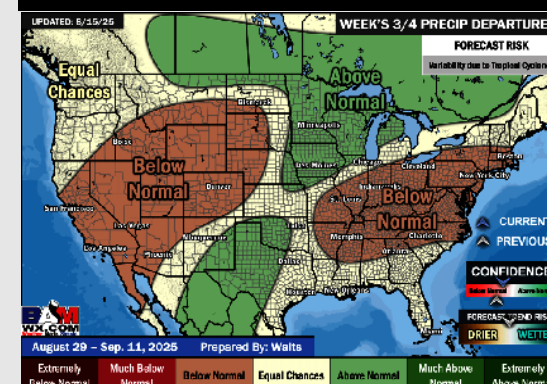
Next 7 Day Total Precipitation



8-14 Day % of Average Precip.



15-30 Day % of Average Precip.



- Temps are expected to be near normal for the next 7 days with scattered rain chances throughout the week.
- Slightly above normal temperatures and below normal rain chances are favored for days 8 – 14.
- Above normal temperatures are favored for the end of August/early September with near normal rainfall chances.