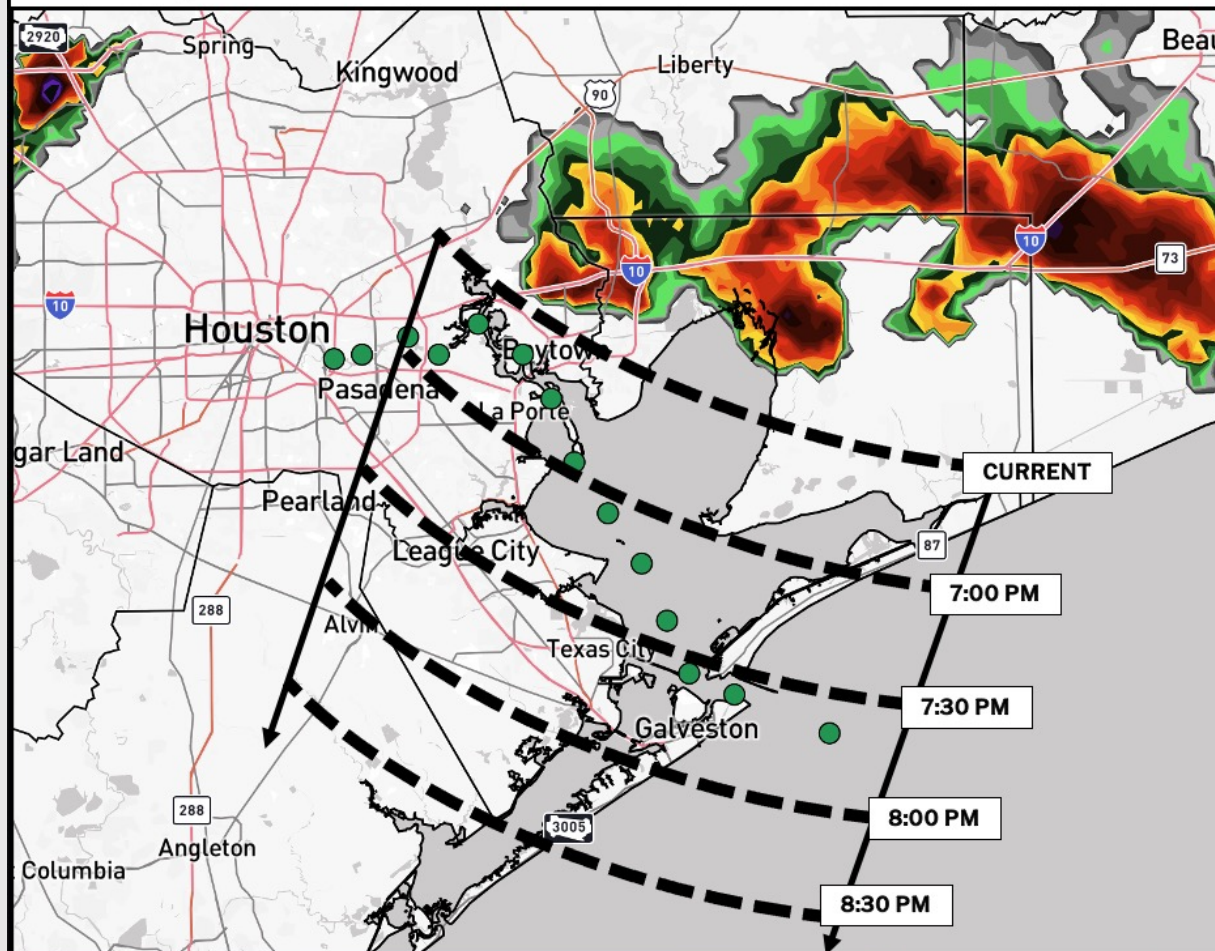


- ✓ Black Dashed Lines represent the ETA of strong wind gusts of 25-30 kts, which will precede storms by ~15 minutes.
- ✓ Storms following behind will hold additional risks for 25-30 kt gusts and small hail.
- ✓ There is a risk for additional storm activity to pop-up along the timed gust front.



Houston Pilots Forecast Package



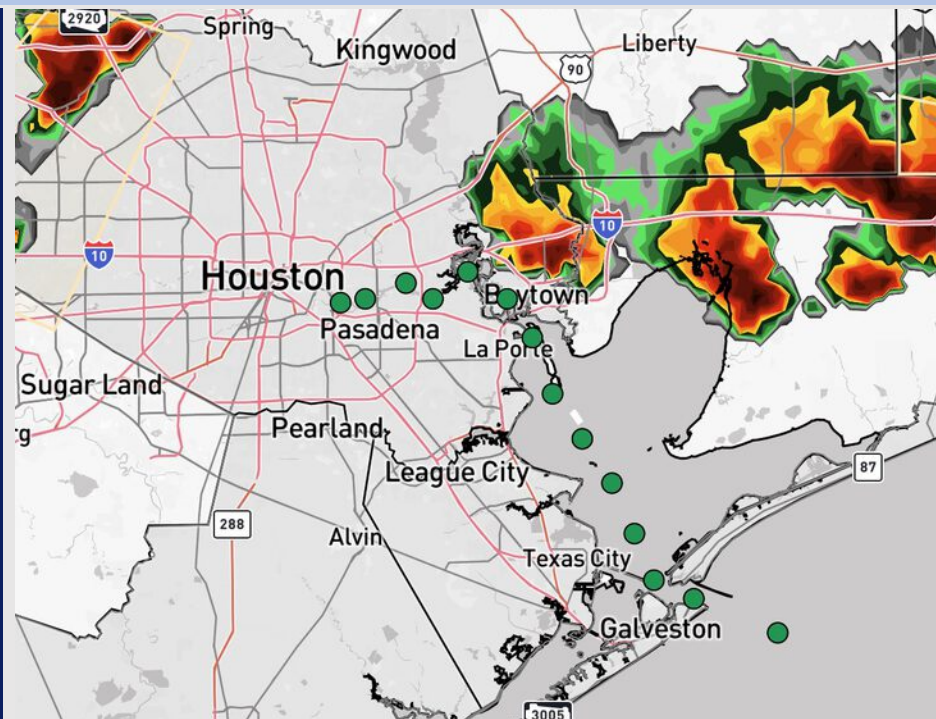
Updated: 6:35 PM CT

Monday, August 18, 2025

Forecaster: Tyler Riggles

Weather Headlines

- Scattered showers and storms will be possible through 9PM this evening, with additional storms possible TUE AM and PM.
- We're watching for additional tropical development in the Atlantic with the possibility to head towards the Gulf late month. Additional details on the Tropical Slide.



Current Radar: 6:34 PM CT

As always, please do not hesitate to reach out to us with any forecast questions at [\(317\)-560-8122](tel:317-560-8122). Press 1 for forecast questions.

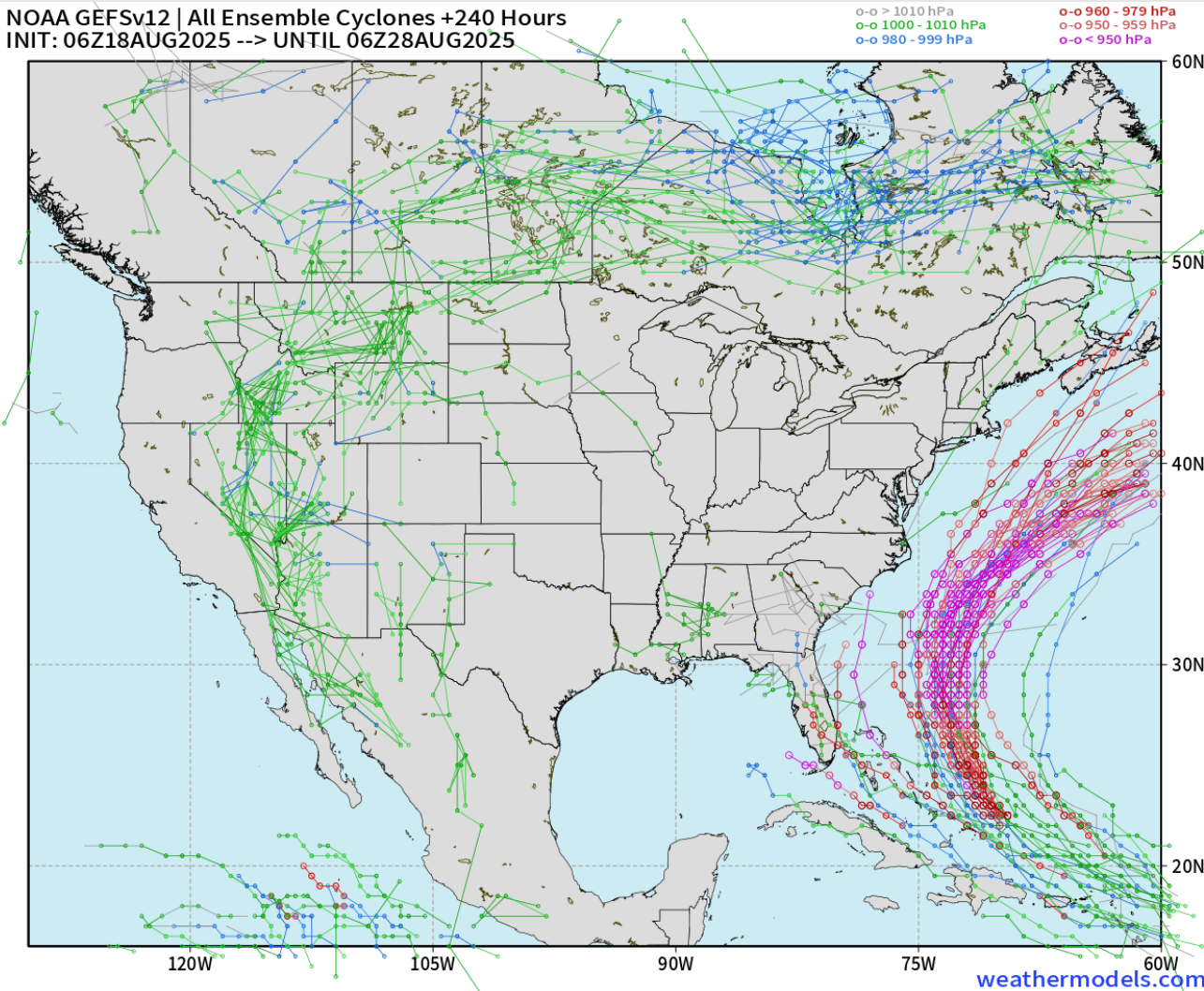
You can also access real-time forecast updates and 24/7 meteorological chat assistance on your [Clarity](#) app. Click [here](#) for login assistance.



Houston Pilots Tropical Update

10-Day Tropical Outlook

NOAA GEFSv12 | All Ensemble Cyclones +240 Hours
INIT: 06Z18AUG2025 --> UNTIL 06Z28AUG2025



No tropical development favored in the Gulf over the next 10 days.

We are continuing to monitor Hurricane Erin in the Atlantic. We anticipate this storm to continue to turn N, remaining on the E coastline.

We're also watching for potential development in the Atlantic ~Aug. 23 - 29. Still uncertain where exactly this would track, but still, something to monitor.

Houston Pilots Visibility Chart (miles)



Visibility	Mon 3 pm	Mon 4 pm	Mon 5 pm	Mon 6 pm	Mon 7 pm	Mon 8 pm	Mon 9 pm	Mon 10 pm	Mon 11 pm	Tue 12 am	Tue 1 am	Tue 2 am	Tue 3 am	Tue 4 am	Tue 5 am	Tue 6 am	Tue 7 am	Tue 8 am	Tue 9 am	Tue 10 am	Tue 11 am	Tue 12 pm	Tue 1 pm	Tue 2 pm
Houston Pilots N - 610 Bridge	10	10	10	10	10	10	10	10	10	10	10	10	10	10	10	10	10	10	10	10	10	10	10	10
Houston Pilots M - Kinder 1	10	10	10	10	10	10	10	10	10	10	10	10	10	10	10	10	10	10	10	10	10	10	10	10
Houston Pilots L - Greens Bayou	10	10	10	10	10	10	10	10	10	10	10	10	10	10	10	10	10	10	10	10	10	10	10	10
Houston Pilots K - Shell Crude	10	10	10	10	10	10	10	10	10	10	10	10	10	10	10	10	10	10	10	10	10	10	10	10
Houston Pilots J - Lynchburg Ferries	10	10	10	10	10	10	6.9	10	10	10	10	10	10	10	10	10	10	10	10	10	10	10	10	10
Houston Pilots I - Exxon 3	10	10	10	10	10	10	6.9	10	10	10	10	10	10	10	10	10	10	10	10	10	10	10	10	10
Houston Pilots H - Morgans Point	10	10	10	10	10	10	6.9	10	10	10	10	10	10	10	10	10	10	10	10	10	10	10	10	10
Houston Pilots G - 75/76	10	10	10	10	10	10	10	10	10	10	10	10	10	10	10	10	10	10	10	10	10	10	10	10
Houston Pilots F - 63/64	10	10	10	10	10	10	10	10	10	10	10	10	10	10	10	10	10	10	10	10	10	10	10	10
Houston Pilots E - 51/52	10	10	10	10	10	10	10	10	10	10	10	10	10	10	10	10	10	10	10	10	10	10	10	10
Houston Pilots D - 37/38	10	10	10	10	10	10	10	10	10	10	10	10	10	10	10	10	10	10	10	10	10	10	10	10
Houston Pilots C - 25/26	10	10	10	10	10	10	10	10	10	10	10	10	10	10	10	10	10	10	10	10	10	10	10	10
Houston Pilots B - 11/12	10	10	10	10	10	10	10	10	10	10	10	10	10	10	10	10	10	10	10	10	10	10	10	10
Houston Pilots A - 1 & 2 Bravo	10	10	10	10	10	10	10	10	10	10	10	10	10	10	10	10	10	10	10	10	10	10	10	10

NOTE: This is automated data that may/may not agree with the official BAM thinking that’s found on the daily slides or special visibility report slides. This data should be used as a guide only

Houston Pilots Wind Chart

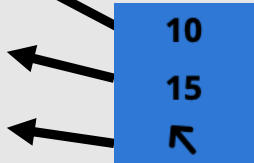


Forecast Confidence



Sustained Wind 10 Knots
Gusts 15 Knots
Wind from the SE

Example



Wind	Mon 3 pm	Mon 4 pm	Mon 5 pm	Mon 6 pm	Mon 7 pm	Mon 8 pm	Mon 9 pm	Mon 10 pm	Mon 11 pm	Tue 12 am	Tue 1 am	Tue 2 am	Tue 3 am	Tue 4 am	Tue 5 am	Tue 6 am	Tue 7 am	Tue 8 am	Tue 9 am	Tue 10 am	Tue 11 am	Tue 12 pm	Tue 1 pm	Tue 2 pm
Houston Pilots N - 610 Bridge	3 8 ←	3 9 ←	3 9 ←	3 9 ←	5 9 ←	5 9 ←	3 8 →	3 7 ↑	3 7 ↑	2 6 ↑	2 5 ←	2 5 →	1 5 ↓	2 5 ↓	2 6 →	2 6 ↓	2 6 ↓	3 7 ↓	3 7 ↓	3 7 ↓	3 8 ↓	5 10 ↓	5 10 ↓	5 10 ↓
Houston Pilots M - Kinder 1	←	3 8 ←	3 9 ←	3 9 ←	5 9 ←	5 9 ←	3 8 →	3 7 ↑	3 7 ↑	2 6 ←	2 5 ←	2 5 →	1 5 ↓	1 5 ↓	2 6 →	2 6 ↓	2 6 ↓	3 7 ↓	3 7 ↓	3 7 ↓	3 8 ↓	5 10 ↓	5 10 ↓	6 10 ↓
Houston Pilots L - Greens Bayou	3 8 ←	3 9 ←	3 8 ←	3 9 ←	3 8 ←	3 8 ←	3 8 →	3 7 ↑	2 6 ↑	2 5 ←	1 5 ←	1 5 ↓	1 5 ↓	1 5 ↓	2 5 ↓	2 5 ↓	2 6 ↓	2 6 ↓	3 6 ↓	3 7 ↓	3 8 ↓	5 9 ↓	5 9 ↓	5 10 ↓
Houston Pilots K - Shell Crude	3 8 ←	3 9 ←	5 8 ←	3 9 ←	3 8 ←	5 8 ←	3 8 →	3 7 ↑	2 6 ↑	2 5 ←	1 5 ←	1 5 ↓	1 5 ↓	1 5 ↓	2 5 ↓	2 5 ↓	2 6 ↓	2 6 ↓	3 6 ↓	3 7 ↓	3 8 ↓	5 9 ↓	5 9 ↓	5 10 ↓
Houston Pilots J - Lynchburg Ferries	3 8 ←	3 8 ←	3 8 ←	3 8 ←	3 8 ←	3 8 ←	3 7 ←	2 6 ↑	2 6 ↑	1 5 ←	1 5 ←	1 3 ↓	1 3 ↓	1 3 ↓	1 5 ↓	1 5 ↓	2 5 ↓	2 6 ↓	2 6 ↓	3 7 ↓	3 8 ↓	5 9 ↓	5 9 ↓	5 10 ↓
Houston Pilots I - Exxon 3	6 9 ←	6 9 ←	6 10 ←	6 10 ←	7 10 ←	7 10 ←	6 10 ←	6 9 ↑	6 8 ←	5 7 ←	5 7 ←	5 7 ↓	5 7 ↓	5 7 ↓	5 7 ↓	5 7 ↓	6 7 ↓	6 8 ↓	6 8 ↓	6 8 ↓	6 9 ↓	6 10 ↓	6 10 ↓	7 12 ↓
Houston Pilots H - Morgans Point	6 9 ←	6 9 ←	6 10 ←	6 10 ←	7 10 ←	7 10 ←	6 9 ←	6 9 →	6 8 →	5 7 ↓	5 7 ↓	5 7 ↓	5 7 ↓	5 7 ↓	5 7 ↓	5 7 ↓	6 7 ↓	6 8 ↓	6 8 ↓	6 8 ↓	6 9 ↓	6 10 ↓	6 10 ↓	7 12 ↓
Houston Pilots G - 75/76	5 9 ←	5 9 ←	6 10 ←	6 10 ←	7 10 ←	8 10 ←	7 10 ←	6 9 →	6 8 →	6 8 ↓	6 7 ↓	6 7 ↓	6 7 ↓	6 7 ↓	6 7 ↓	6 8 ↓	6 8 ↓	7 9 ↓	6 9 ↓	6 9 ↓	6 10 ↓	6 12 ↓	6 10 ↓	6 12 ↓
Houston Pilots F - 63/64	3 8 ←	5 9 ←	6 10 ←	6 10 ←	6 10 ←	7 10 ←	7 10 ←	6 9 →	6 8 →	6 8 ↓	6 7 ↓	6 7 ↓	6 7 ↓	6 7 ↓	6 7 ↓	6 8 ↓	6 9 ↓	7 9 ↓	6 9 ↓	6 10 ↓	6 10 ↓	6 10 ↓	6 10 ↓	6 10 ↓
Houston Pilots E - 51/52	3 8 ←	5 9 ←	5 9 ←	6 10 ←	6 10 ←	7 10 ←	7 10 ←	6 9 →	6 8 →	6 7 ↓	6 7 ↓	6 7 ↓	6 7 ↓	6 7 ↓	6 7 ↓	6 8 ↓	6 9 ↓	7 10 ↓	7 9 ↓	7 9 ↓	7 10 ↓	6 12 ↓	6 10 ↓	6 10 ↓
Houston Pilots D - 37/38	3 8 ←	3 9 ←	5 9 ←	6 10 ←	6 10 ←	7 10 ←	6 9 ←	6 9 →	6 8 →	6 7 ↓	6 7 ↓	5 7 ↓	5 7 ↓	5 7 ↓	6 7 ↓	6 8 ↓	6 9 ↓	7 10 ↓	7 9 ↓	7 9 ↓	7 10 ↓	6 12 ↓	6 10 ↓	6 10 ↓
Houston Pilots C - 25/26	3 8 ←	3 8 ←	3 8 ←	5 9 ←	6 9 ←	7 10 ←	6 9 ←	6 9 →	6 8 →	5 7 ↓	5 7 ↓	5 7 ↓	5 7 ↓	5 7 ↓	6 7 ↓	6 8 ↓	6 8 ↓	7 9 ↓	7 9 ↓	7 10 ↓	7 10 ↓	6 12 ↓	6 10 ↓	6 10 ↓
Houston Pilots B - 11/12	3 8 ←	3 8 ←	3 9 ←	5 9 ←	6 9 ←	6 9 ←	6 9 ←	5 9 →	5 8 →	3 7 ↓	3 7 ↓	3 7 ↓	3 7 ↓	3 7 ↓	3 7 ↓	5 8 ↓	5 8 ↓	6 9 ↓	6 9 ↓	6 10 ↓	6 10 ↓	6 12 ↓	6 10 ↓	6 10 ↓
Houston Pilots A - 1 & 2 Bravo	3 8 ←	3 8 ←	5 8 ←	6 9 ←	6 9 ←	6 9 ←	6 9 ←	6 9 →	6 8 →	5 8 ↓	5 7 ↓	5 7 ↓	5 7 ↓	6 7 ↓	6 8 ↓	6 8 ↓	6 9 ↓	7 10 ↓	7 10 ↓	7 10 ↓	7 12 ↓	6 12 ↓	6 10 ↓	6 10 ↓

NOTE: This is automated data that may/may not agree with the official BAM thinking that's found on the daily slides.
This data should be used as a guide only.

Houston Pilots: MON. 8/18/2025

Forecast Discussion

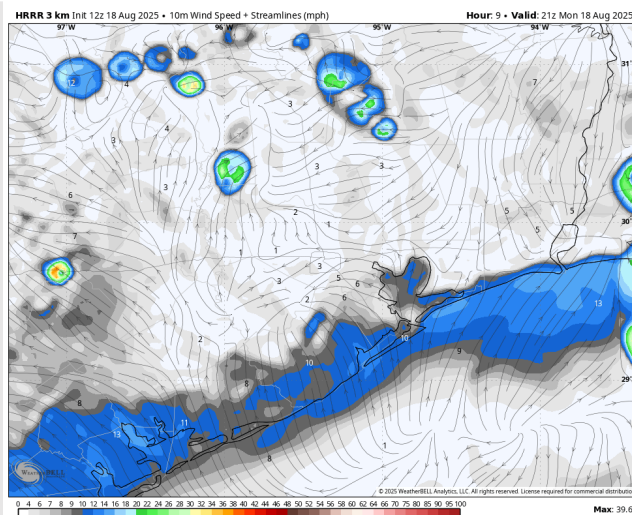
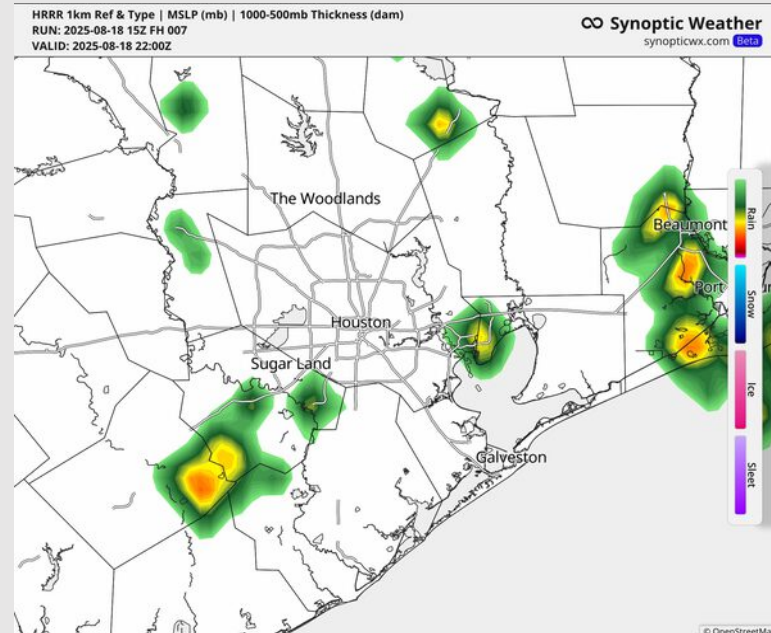
Precip: Hit/miss showers and storms will be possible for all Stations through 9PM. Lightning and wind gusts of 25+ kts will be possible.

Wind: Winds will be rather variable for the rest of the day. **N of Morgan's Point:** Winds will be at 2 – 7 kts. **S of Morgan's Point:** Winds will be at 5 – 10 kts

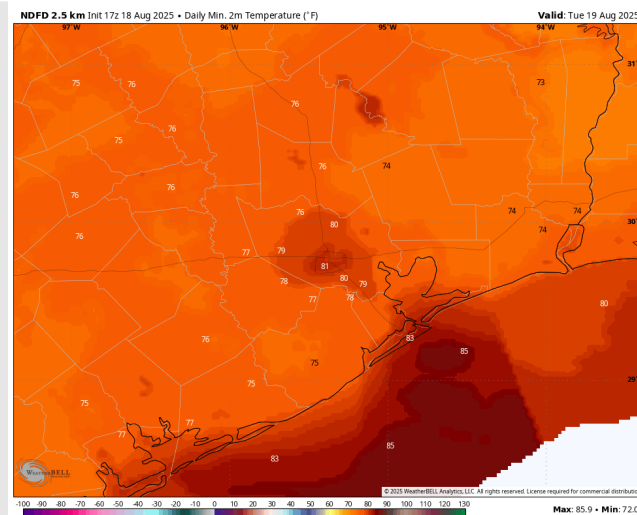
Low Temps: **N of Morgan's Point:** Near 80 F. **S of Morgan's Point:** Upper 70s to low 80s F.

Visibility: No fog concerns today. Visibilities may be reduced under heavier downpours.

Precip Image: 4 PM CT



Wind Speed:
4 PM CT



Low Temps
TUE AM

Houston Pilots: TUE. 8/19/2025

Forecast Discussion

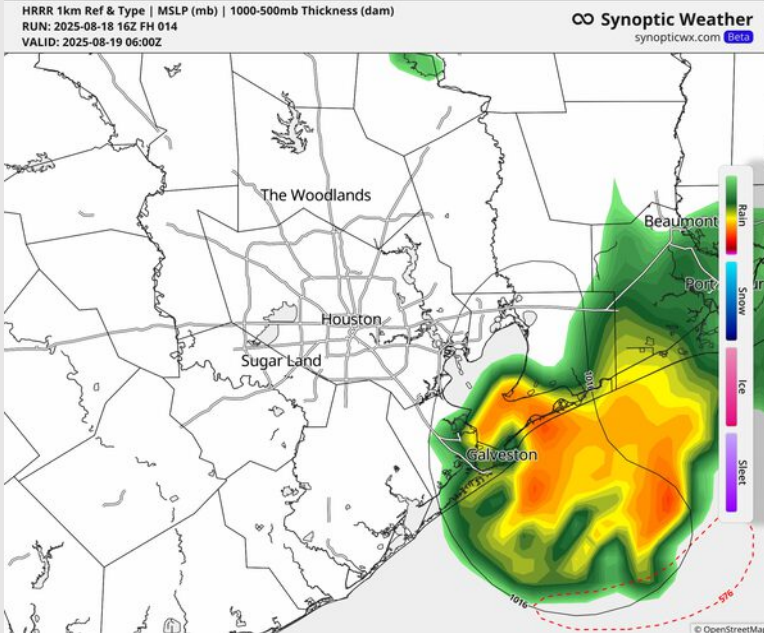
Precip: Scattered showers and storms will be possible from 12AM to 9AM. Lightning and a few gusts of 25+ kts can be possible within storms. Isolated showers will then be possible from 9AM to 12PM.

Wind: Winds will be variable throughout Tuesday, with the tendency to blow out of the E. **N of Morgan's Point:** Winds will be at 1 – 6 kts. **S of Morgan's Point:** Winds will be at 2 – 7 kts.

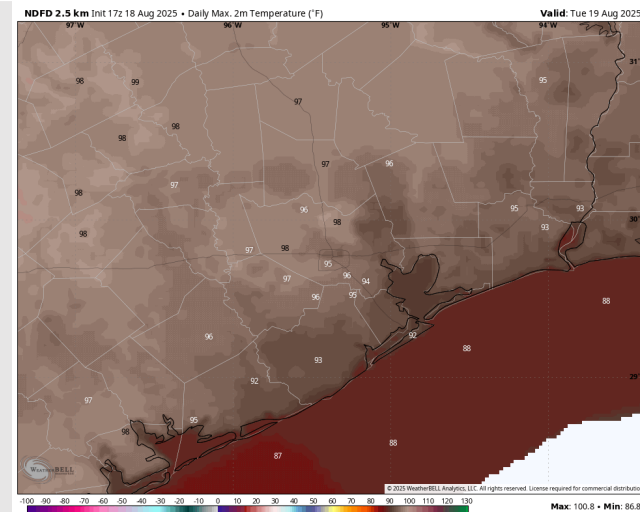
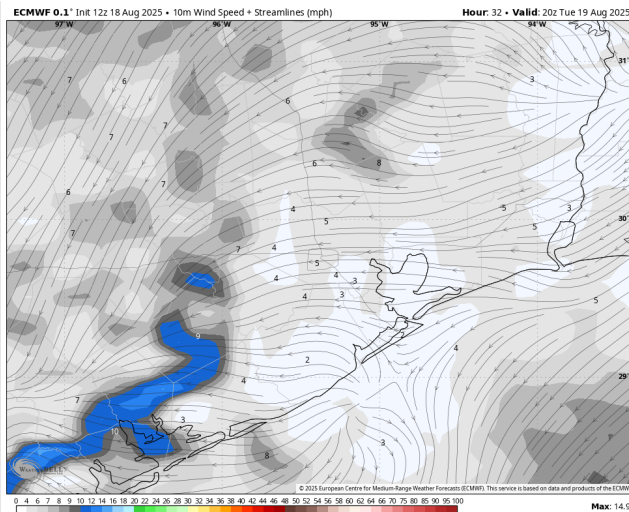
High Temps: **N of Morgan's Point:** Mid 90s F. **S of Morgan's Point:** Low 90s F.

Visibility: No fog concerns Tuesday. Visibilities may be reduced under heavier downpours.

Precip Image: 1 AM CT



Wind Speed:
3 PM CT

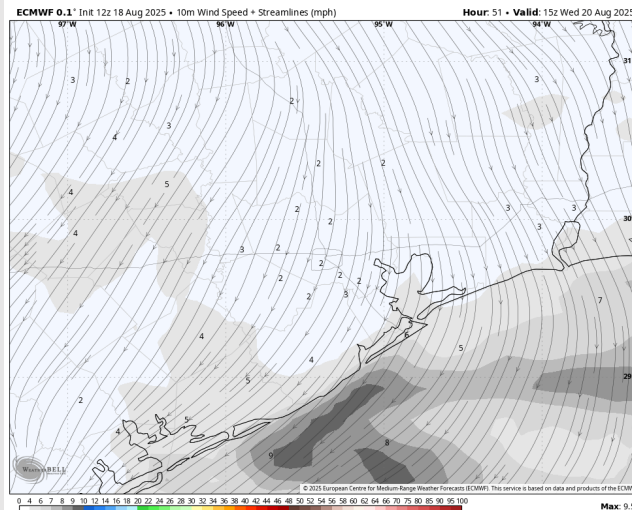
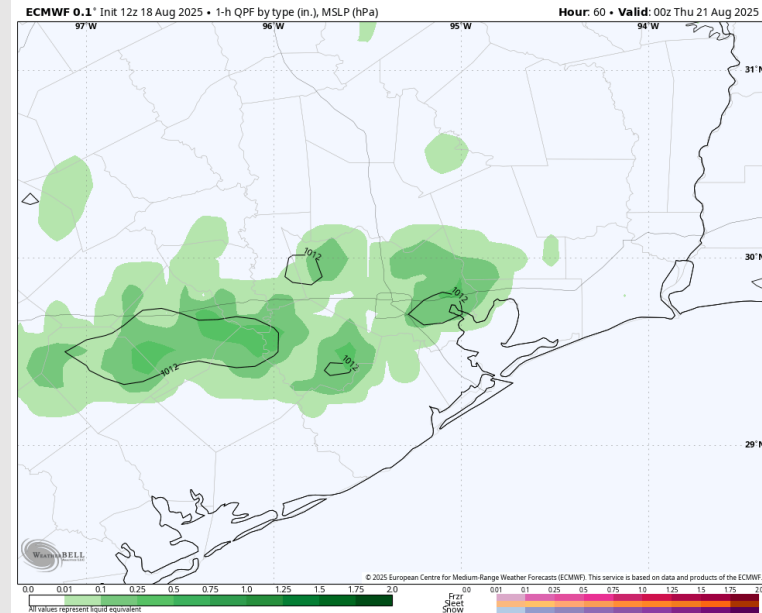


High Temps
Tuesday

The image contains two logos. On the left is the logo for BAM WX.COM, featuring the letters 'BAM' in a stylized font with a white swoosh through the 'A', 'WX.COM' in black, and the tagline 'Weather. Made. Simple.' in blue and red. On the right is the logo for Houston Pilots, featuring a large red 'H' with the text 'Houston Pilots' in white script to its right.

Precip Image: 7 PM CT

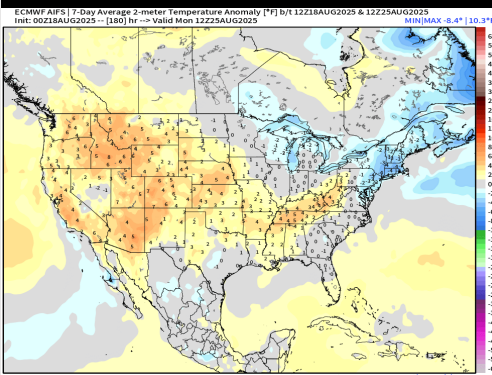
Visibility: No fog concerns Wednesday. Visibilities may be reduced briefly under heavier downpours.



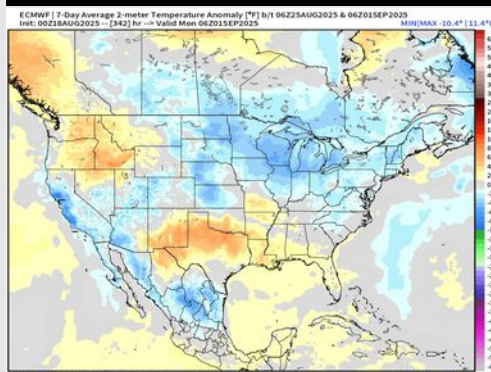
High Temps Wednesday

Houston Pilots: 8/18/25

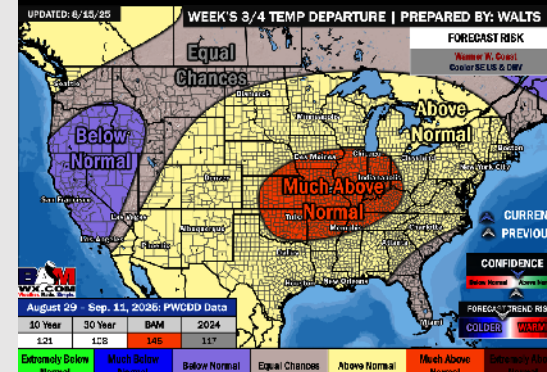
Next 7 Day Temperature Departure



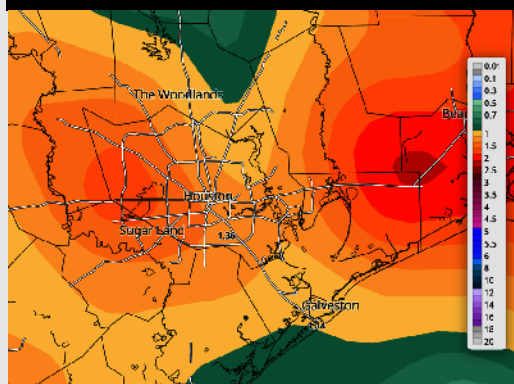
8-14 Day Temperature Departure



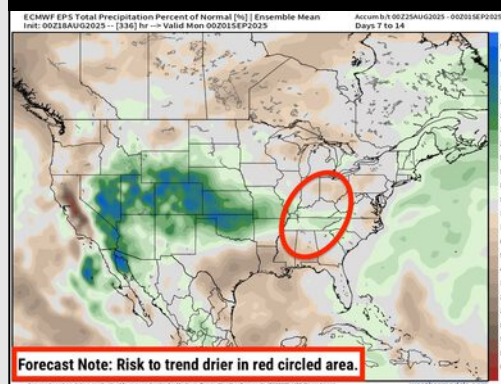
15-30 Day Temperature Departure



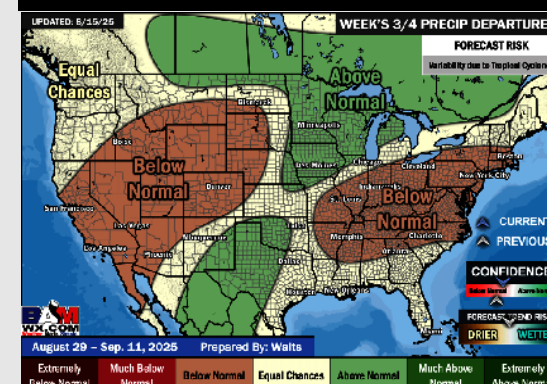
Next 7 Day Total Precipitation



8-14 Day % of Average Precip.



15-30 Day % of Average Precip.



- Temps are expected to be near normal for the next 7 days with scattered rain chances throughout the week.
- Slightly above normal temperatures and below normal rain chances are favored for days 8 – 14.
- Above normal temperatures are favored for the end of August/early September with near normal rainfall chances.